

CONSERVATION NEWS

Kent

Spring 2016

KENT'S Coastal Haven

WIN a mini break
at Sheldon Spa

PERIOD HOMES



RENOVATION



INTERIORS



GARDENS

Ashford & Cranbrook Roofing

Traditional, modern and heritage roofing



- Built on reputation • Free, no obligation quotes
- Leading the way in quality • Kent Peg tile specialists

www.cranbrookroofing.co.uk



Tel: 01580 242925



Copperfields

OF WHITSTABLE

Cookshop & Gifts Since 1956

Inspiration for your kitchen and home



shop@copperfieldsofwhitstable.co.uk • www.copperfieldsofwhitstable.co.uk
93 High Street • Whitstable • Kent • CT5 1AY • Tel: 01227 273 519

OPEN 7 DAYS A WEEK

DESIGNER BED CO.

CANTERBURY



INTRODUCING **OUR LATEST** *collection*



FAMILY OWNED SPECIALIST BED AND
MATTRESS STORE NOW IN OUR 39TH YEAR

VISIT OUR SHOWROOM AND DISCOVER OUR EXCITING DISPLAY
OF TRADITIONAL AND CONTEMPORARY BEDSTEADS

27 Maynard Road, Wincheap Estate, Canterbury, Kent CT1 3RH Tel: 01227 479446
www.designerbedsltd.co.uk • Email: designerbedsenquiries@live.co.uk

LUKEHURST

FURNITURE | BEDS | CARPETS | CURTAINS

lukehurst.co.uk



SPRING PROMOTION

25% off all Parker Knoll furniture

Burghley large 2 seater sofa B range fabric

MRP ~~£1,691~~ Now £1,265 Matching Chair ~~£1,030~~ Now £770

Also available in leather - Contact for prices

Bargebrick House, Eurolink Way, Sittingbourne ME10 3HH Tel: 01795 430299

High Street, Rainham ME8 7JH Tel: 01634 236956 or buy online @lukehurst.co.uk



Parker Knoll

VISPRING

HYPNOS

ercol
ENGLAND SINCE 1920

DURESTA





Triple Gold Award Winners SPATA 2015
SPATA Pool Contractor of the Year 2015

**XL Pools Ltd, The Parlour, Saracens
Dairy, Pluckley Road, Pluckley, TN27 0SA**

Telephone: 0845 20 60 420

Email: enquiries@xlpools.com



XL POOLS

WWW.XLPOOLS.COM

Published by
CONSERVATION NEWS
Kent Ltd

Publisher
Dawn Long

Contributors
Jacksons Fencing

XL Pools

Roots Kitchens Bedrooms
Bathrooms

Susan Hubbard

George Fisk Photography

Ria Langner

Tudor Roof Tiles Ltd

Dobbies

Editor/Sales Manager
Dawn Long

Designer
Lynn Fasulo

Front cover
Laura Ashley

© Conservation News
(Kent) Ltd 2016

All rights reserved. Reproduction of any part of this magazine is not permitted without written permission of the publisher. The publisher accepts no responsibility of any loss or damage in respect of any product or service that may be advertised.

Printed in the UK by Pensord.

welcome

SPRING 2016

Welcome to the new look spring edition, we hope you like it!

Spring has arrived and the lighter evenings allow us to spend more time outdoors. The brighter weather encourages us to venture out more, so we check out what the coastal town of Whitstable has to offer. Known as 'the bubble' by the locals, it boasts lots of independent shops, great restaurants and bars, a castle, and some of the most beautiful sunsets in the county.

Kent Peg tiles are seen all over our beautiful county, predominantly on listed and period properties. Tudor Roof Tiles tell us about the history of this famous little tile and bring us right up-to-date with where it stands in today's market and how it's used in new properties.

Moving inside, we immerse ourselves in a haven of tranquillity at Sheldon Spa in Faversham; and we have a three-hour stay for two to give away, including a relaxing 30 minute treatment.

Any feedback or suggestions on what you would like to see in future editions of Conservation News are always appreciated.

Dawn





**Kitchens Bedrooms
Bathrooms**

Roots are a local family run specialist that design, supply and install complete rooms. We take responsibility for the whole project ensuring your new room is a pleasure from the start.

Visit our large showroom in Boughton-under-Blean between Faversham and Canterbury.



Large showroom at: Vine Farm, Stockers Hill, Boughton-under-Blean,
Faversham, Kent, ME13 9AB • www.rkbb.co.uk • 01227 751130



what's inside

SPRING 2016

- | | | | |
|----|--|----|--|
| 10 | Jacksons Fencing
News, topical treats & more | 38 | Shopping
Inspiring ideas for your home |
| 16 | Brighten your day
Fresh ideas for spring gardens | 40 | Bubble's on the rise
We visit Whitstable |
| 23 | XL Pools
How long does it take to install an outdoor swimming pool? | 62 | Traditional conservation
The evolution of the Kent Peg Tile |
| 30 | A visit to Roots
Kitchens, bedrooms & bathrooms | 72 | Spotlight on...
Sheldon Spa, Faversham |





News, topical treats & more...

Think your garden's too small for an outdoor room? Think again.

WORDS: LOUISE TOMLIN



Last month we featured our beautiful new Curve garden shelter, to inspire you with your spring garden projects. Talking of spring, I hope I'm not tempting fate by mentioning that we should be looking forward to some better weather as the clocks go forward.

The Curve has created quite a stir since its launch earlier

this year. The garden shelter with its generous interior space: approximately 3.1m wide x 5.3m deep and 2.2m high, is big enough to set up a dining area leaving plenty of room for a chill out zone as well.

However, if space is at a premium in your garden, or maybe you have something more along the lines of a courtyard space to get creative

with, then don't despair. You may not have to miss out on the pleasures of the outdoor room that many people find such a desirable idea these days, that sought after area for quality lifestyle activities; entertaining, partying or simply just relaxing in.

Please allow me to introduce you to what I describe as the Curve's little sister, the equally stylish Demi Curve. With a

footprint of approximately 3.1m wide x 2.7m deep and 2.2m high.

Smaller than 'big sister', but perfectly formed, it is just right for the urban garden or courtyard, although it is still large enough to house a comfortably sized sofa and chairs set with a low table, just right for relaxing with your Kindle and your favourite tittle.

Alternatively swap those for a dining table and chairs and it will make a delightful al fresco area for summer feasting. And like the larger Curve, the Demi Curve also has the additional protection of polycarbonate



sheets, that cover the panels to give you a little extra shelter from showers and the wind.

As with all Jacksons products, the garden shelters are handmade from Jakcured timber, guaranteed for 25 years, so you can enjoy them for many years to come.

You can find out more about this and other Jacksons products and services by going to your dedicated page on our website at:
www.jacksons-fencing.co.uk/ashfordlocal.
louise@jacksons-fencing.co.uk



Win £300 of JACKSONS vouchers

To enter the free prize draw and be in with a chance to win £300 of Jacksons vouchers simply log on to your dedicated page, address below and follow the easy instructions on how to enter.

To enter go to: www.jacksons-fencing.co.uk/ashfordlocal

For information on any of Jacksons products or brochures, please call 0800 408 4754 to talk to your local Jacksons Fencing Centre.

The draw closes 30.4.16.



Jacksons guarantees all its timber products for 25 years. So when you see this badge, you are guaranteed the highest quality, great British design, a seamless installation by our team of specialists and most of all, peace of mind.




We call it our badge of quality...

Call **0800 41 43 43** for a copy of our brochures or to buy online visit **jacksons-fencing.co.uk**

 facebook.com/JacksonsFencing

 pinterest.com/Jacksonsfencing

 [@JacksonsFencing](https://twitter.com/JacksonsFencing)

670 Jacksons Fencing Head Office
Stowting Common Ashford
Kent TN25 6BN Tel 01233 750 393

Jacksons
Guaranteed Quality since 1947

tree-tek 
professional tree surgery & tree management



Call us now for a FREE Quotation

NPTC City & Guilds qualified – Fully insured

t: 01227 637590 m: 07860 897037

www.tree-tek.co.uk info@tree-tek.co.uk



ANDREW WILTSHIER
GARDEN DESIGN

**FROM NEW PLANTING
SCHEMES TO FULL GARDEN
DESIGN PACKAGE**

ENJOY YOUR GARDEN

07818 064343

www.andrewwiltshier.com



Evergreen Landscaping Design & Construction

All aspects of landscaping work undertaken:

- Decking, patios, fencing
- Driveways, block paving, brick and stone work
- Ponds, planting and more.

All finished to a high standard at competitive prices.

Phone Lee 07799103112 / 01227 264482

For a free quotation or visit www.evergreengardenskent.co.uk

markilux


LENLEYS

Contact Lenleys now for more details or book an appointment for a full quotation.

Stunning awnings for all occasions utilising a multitude of drive echnologies including Sun/Wind/Rain reactive sensors as well as options like infra-red heating & ambient lighting.

Extra Elements for More Control



Light



Wind Sensor



Vibrabox Auto Close



Sun Sensor



Light with Heater



Remote Control

Special Offer: Half Price Awnings Power Upgrade

www.lenleys.co.uk

Roper Road, Canterbury CT2 7EL **01227 766655**

FURNITURE | BEDS | CURTAINS | FLOORING | ACCESSORIES

Brighten your day

BE INSPIRED

Longer and lighter days mean that we can finally make the most of the great outdoors and a new year brings brand new trends to make your home look picture perfect - both indoors and out.

Whether you are looking to undertake a complete style overhaul or for a few simple accessories to quickly refresh your space, look no further.

Here are the top four outdoor living looks for spring/summer 2016.



All items from Dobbies

1 GARDEN FRESH...

'Fresh from the garden' - a rustic, yet contemporary look, be inspired by nature with this season's range. Create the perfect place for spring time jobs and invest in a sturdy selection of tools and planters, or enjoy a spot of alfresco dining with the practical and stylish new Garden Vegetable Melamime range, with its hand painted ceramic look.

2 SUMMER DREAM...

With spring in full bloom, take inspiration from the great outdoors for a well overdue breath of fresh air that will leave your home looking lovely. This year's take on the ever-popular florals trend is softer than previous seasons, with delicate, hand painted pastel tones echoing the charm of an English country garden.



Lavender cushion, £14.99;
pink velvet cushion, £14.99;
floral mug, £5.99, all Dobbies



Watercolour set of 4 cups,
£12, BHS

Day bed with striped cushions,
£649, Dobbies

3 TROPICAL...

With the world's attention firmly focused on the upcoming Rio 2016 Olympics, one of this season's top trends has undoubtedly taken inspiration from the exuberant style of the Brazilian city. Bright and breezy florals, fern prints, burnt oranges and pops of pink and turquoise make for a fun exotic look that works perfectly to invite some summer sunshine into your home and garden.



All items from Dobbies

A brilliant white outdoor furniture set will work perfectly when teamed with bold, tropical themed accessories to brighten up any space, creating the perfect place to continue garden parties with family and friends long after the sun goes down.



4 METALLIC OPULENCE...

Lazy days out in the garden are some the highlights of summer and you can sit back and relax in style. The ever-popular metallic trend teamed with earthy browns and copper accessories is reminiscent of exotic travels, for a gorgeous luxe look. Or 'go for gold' with elegant glassware, and succulents for floral décor that can stand the heat.



Pineapple ice bucket, £40,
www.oliverbonas.com



Capri bronze mesh table, £74.99; tray, £14.99; Buddha head, £16.99, tealight holder, £19.99, all Dobbies



Glass tumbler; £8.50
www.amara.com



Outdoor coffee table, £635,
John Lewis

The Pomegranate Tree

at Standard Quay garden centre & coffee shop

- Gardenware & plants for home and garden
- Attractive & unusual gift ideas
- Great service
- Advice always available from staff and our gardening reference library
- Freshly prepared homemade food & cakes
- Free delivery in the ME13 area

Mon - Sat: 9.30 - 5.00
Sun: 10.00 - 4.00

5 Monks Granary,
Standard Quay, Faversham ME13 7BS

Tel: 01795 537643
www.thepomegranatetree.co.uk



Old English Tools



Bench planes, chisels, felling axes,
bill hooks, froes, draw shaves,
side axes, early garden tools,
blacksmith tools, pine boxes.

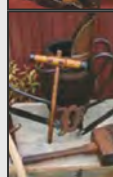
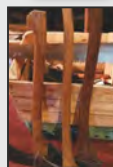
Cast iron log burners
and fire grates.

Tools old and new bought
for cash. Workshops cleared.

Open now at
Faversham Standard Quay
ME13 7BS

5-7 days a week

Call Phil on 07796 343722



Large range of shrubs, roses, climbing plants, ornamental and fruit trees, herbaceous perennials, soft fruit, herbs, alpiners and house plants.

Also in season, a wide selection of vegetable plants, patio plants, bedding plants, seeds and bulbs.

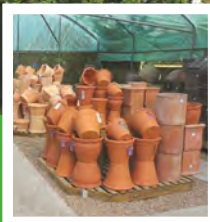
We also stock all the composts, pots, fertilisers, tools and other sundries for your gardening needs, not to mention our famous range of 'Paul's Own Mix' composts.

OPENING TIMES:

Mon - Sat: 8.30am - 6pm

Sun: 10am - 4pm

Meadow Grange Nursery



Honey Hill, Blean,
nr Whitstable, Kent CT5 3BP
Tel: 01227 471205



Paving the way to excellent patios and driveways

We also supply:

- Lime putty
- Mature lime putty
- Hydrated lime
- Silver sand

**HERNE BAY
GILLINGHAM**

**Tel: 01227 366633
Tel: 01634 232491**



Our range of natural stone floor and wall coverings is probably the most comprehensive and stunning available in the UK today. Directly sourced from every corner of the globe with the emphasis on quality and exclusivity at MBS our stone tiles and cladding are suitable for both traditional and contemporary applications. Whether you are planning a small patio or creating a large garden, MBS stock everything you need to complete the task. Why not visit us and speak to our qualified staff about garden design and the best landscaping products for your garden.

www.mitchambuildingsupplies.co.uk



How long does it take to install an **OUTDOOR SWIMMING POOL?**

Ben Tiffin of XL Pools explains how the installation of an outdoor swimming pool may not take as long as you might expect.



An outdoor swimming pool can be relatively quick and simple to install when compared to an indoor pool. It's still often a long and messy process, but the added complication of a building is taken out of the equation. The amount of time it will take to construct and install your outdoor pool will depend on a number of factors, including the size and type

of pool you have chosen, the location and layout of the pool site and whether there is easy access for the construction team and all their equipment.

The first step in swimming pool construction is to clear the area and establish an access route from the road, at which point the excavation can begin. Whichever kind of swimming pool you go for, be it a concrete pool, a vinyl liner pool or a one piece fibreglass or ceramic shell, there will need to be a hole in the ground! Once the excavation has been completed, progress can be quite quickly made, particularly if the pool is a one piece shell. Once it has been lifted and lowered into

position by a crane, or in some cases even a helicopter, you'll begin to glimpse what the finished outcome will be like.

There's still a lot of plumbing and electrical work to complete, which can be carried out either by your pool contractors or sub-contractors, following which work can begin on the finishing touches. Coping stones and pool surrounds will need to be laid, and you may wish for the pool area and the access route to be landscaped following the build, as there will often be some unavoidable damage and disruption caused by the heavy machinery.

Every pool is different, however as a very general



guide, you might expect the installation of the pool itself, after excavation, to take around 10 days to 2 weeks. Of course, this will vary enormously, especially if any unforeseen problems emerge. The construction process may also be weather-dependant, and extreme or adverse weather conditions can significantly hamper the progress.

When you first make arrangements with your pool contractor for the installation to take place, you should be made aware of a project manager on site, whose job is to make sure suitable progress is made and that the process runs smoothly. They will be able to advise you of approximate timescales and make you aware of any issues you should know about.

Pool construction timescales

The general building process of an outdoor swimming pool might be as follows:

1. SITE CLEARING & ACCESS:

Anything from a few hours to one day.

2. EXCAVATIONS & GROUND WORKS:

One day to five days (depending on access).

3. POOL CRANE IN HOLD AND BASE:

One day.

4. PLUMBING FROM POOL TO PLANT ROOM:

One to three days (depending on distance to plant room and access).

5. BACKFILL:

One to three days (depending on site access)

6. POOL ROOM PLUMBING:

One to three days.

7. POOL WIRING: One to two days

8. COPING STONE FITTING: One to three days.

Pay a visit to Exotic Palms & Spas



Entrepreneur Chris Whitton, Managing Director of Exotic Palms and Spas based in Gillingham, invites you to visit his showroom to find out about Beachcomber hot tubs which have been hand-made in Vancouver, Canada since 1978. Exotic Palms and Spas have been

selling Beachcomber hot tubs for the past 15 years, and are their number 1 dealer in the UK. They would like the opportunity to share with you how the experience of owning a hot tub can make a difference to your life; leaving you feeling relaxed and rejuvenated.

Chris says "We have 14 Beachcomber models on offer. Eleven have reflex foot massage and all come with underwater mood lighting - and in some cases top lighting and a backlit waterfall. The top of the range models come with an iPod docking station, suitable for the iPhone 5 and 6, with wireless controls to select your music."

Each hand crafted Beachcomber hot tub comes with a 30-year lifetime guarantee on the construction.

According to the Californian Energy Commission which carried out a study of all hot tub manufacturers with regard to energy efficiency, Beachcomber came out in front by 57%, which makes it inexpensive to run at around 54p per day.

Exotic Palms & Spas offer complete water training and write up a diary in every case for three months for each client, as well as providing professional cleaning and servicing.

Call now to arrange a viewing.
Tel: 07831 840606.



Exotic Palms and Spas Ltd

A Beachcomber Hot Tub is a breath of fresh air in your life

HOT TUBS

Feeling stressed ? Then Soak and relax in a Beachcomber Hot Tub



Professional advice • Full range of water treatments •
Professional cleaning service/maintenance • 30 years
guarantee on construction of tub • An original
award-winning premiere dealer



Soak • Enjoy • Relax

Unit C • Chalmers Way • Invicta Business Centre • Gillingham • Kent • ME8 6PF
01634 238700 • 07831 840606 • www.exoticpalmsandspas.co.uk

For a limited period only, Free delivery and installation. Call today for details.



EAST KENT TIMBER LTD
TIMBER MERCHANTS

FOR QUALITY
MADE TO MEASURE
DECKING



WE OFFER BOTH PRESERVATIVE TREATED SOFTWOOD
AND DURABLE HARDWOOD

COMPLETE RANGE OF NEWEL POSTS, HANDRAILS
AND BALUSTERS

BUILT IN WATER REPELLENT 15 YEAR GUARANTEE

www.eastkenttimber.co.uk

Canterbury 01227 738838

Ashford 01233 380095

HOWFIELD FARM HOWFIELD LANE
CANTERBURY KENT CT4 7HQ



Specialists in
traditional lime mortars,
gauged brickwork,
stonemasonry and all
associated crafts

Visit our website for full listings and current projects
01622 859794 | www.kcrltd.com | 07831 236228
email: info@kcrltd.com

 **Kent Conservation & Restoration Ltd**
Historic Building Craftsmen



DRIVEWAYS & PATIOS LTD



**BLOCK PAVING • DRIVEWAYS • DECKING • FENCING
PATIOS • TURFING • GARDEN CLEARANCE
BUILDING & MAINTENANCE WORK**

LANDSCAPING SPECIALISTS

01227 749872 | 07770 964939

www.drivewayexperts.co.uk

Traditional
block
paved and
cobblestone
drives or
pathways for
listed and
period homes.



Your vision. *Our expertise*



- Patios
- Paths
- Drainage
- Fish ponds
- Hardstanding
- Bases
- Drives
- Extensions
- Plans drawn
- Complete builds

*Plans drawn and submitted to
Council for approval*

Office: 01227 277214
Mobile: 07894 542524

John Hunt
GROUNDWORKS & BUILDING

Barnett Building Services

Specialist

in **BOX SASH
AND
BESPOKE
WOODEN
WINDOWS**

- Carpentry
- Joinery
- Kitchens
- Bathrooms
- Fitted wardrobes
- Building maintenance
- Conservatories
- Extensions



Tel: 07973 983684

www.barnettbuildingandmaintenance.co.uk



Georgian Brickwork

**Specialists in
Conservation & Heritage Brickwork**

Skilful repairs to listed & period properties
using
traditional methods and materials
Charles: 07732 975 349
www.georgianbrickwork.co.uk



HERITAGE BRICKWORK RESTORATION

RENOVATION AND CONSERVATION CRAFTSMEN

- Repointing & Cleaning • Historic Brickwork Repairs
- Gauged Brickwork • Mathematical Tiling
- New Build with Traditional Techniques

www.heritagebrickworkrestoration.co.uk

Tel: 01227 264 737 • Mob: 07866 388 962

BJ CESSPOOL SERVICES LTD



Tel 07796 282864 or 01233 624017

www.bjcesspool.co.uk

If you want someone who is reliable, careful and efficient to empty your cesspool, septic tank or treatment plant please call Barry or Fiona Spicer.

- Emergency blockages
- Septic tank clearance
- Cesspool maintenance
- Treatment plant maintenance

We can help you with your home, rental properties, caravan parks, hotels and in fact any property that is not on main drains.

A jetting service can also be provided.

A complete one-to-one service all year round



Venetian & roller blinds • Vertical blinds • Curtains, plain & print • Curtain rails & poles
• Canopies and awnings • Conservatory blinds • Free estimation and fitting service

SHOWROOM OPENING HOURS: MON-THURS 9AM-1PM, SATURDAY 9AM-1PM



HB HOWARDS
BLINDS & CURTAINS LTD

Howards House, Joseph Wilson Industrial Estate, Millstrood Road, Whitstable CT5 3PS

Tel: 01227 772779 | Mobile: 07860 391136

www.howardsblinds.com | sales@howardsblinds.com



A VISIT TO ROOTS

Kitchens • Bedrooms • Bathrooms

Based in Boughton-under-Blean between Faversham and Canterbury, 'Roots Kitchens Bedrooms Bathrooms' began almost 20 years ago in 1998. It's a family business with brothers Steven and David and their parents Kathy and Graham.

Roots have become known for a full design, supply and install service for kitchens, bedrooms and bathrooms taking responsibility for every trade from start to finish.

How did you choose the name Roots?

Steve answered; "Root is our surname. I remember when we began, spending ages trying to choose a good name. In the end we settled on simply using our family name and this turned out to be a very good thing. As it's our name on everything we do we've always been very focussed on doing our best work and looking after our reputation."

Roots recently won '2015 Best Domestic Bathroom Installer', how did that come about?

David says "In December we were chosen by Geberit, a large multinational manufacturer of sanitary fittings as the UK's '*2015 Best Domestic Bathroom Installer*'. Geberit are a company that make many of the parts customers will never see. For a long time we've specified and used their WC cisterns and concealed frames for wall-hung toilets and basins. Whilst these parts are never seen they can have a huge impact over the working life of a room. We're always able to get spare parts and that's important to us as when a customer calls us to help fix a problem with a toilet we fitted ten years ago or more, we want to be able to help and fix it. One of the reasons we won was a timelapse video we have on YouTube of a room we installed last year. (https://youtu.be/2B9fP_9kJ9E)

In the video you can also see that we're using



a different material to line the shower. This is a waterproof backing panel rather than plasterboard. Plasterboard is cheaper but has a higher chance of failing. Failing means if it gets damp the tiles will fall off. This won't happen in the first few years so for many businesses that's an acceptable trade off. For Roots and our customers, we all want a much longer life so investing in these hidden materials now means a better result in years to come."

Steve, I hear you bring your love of technology into your designs?

"That's true! Last year a customer asked if we could do anything interesting with the lighting in their bathroom. Knowing they enjoyed long soaks in the bath reading a novel I had the idea of creating

a ceiling of stars like a night sky. I combined my interest in astronomy and computing to generate an accurate map of the stars in the sky on the date of their wedding. I then threaded more than 300 optical fibres into a 1.4m diameter disk, each fibre representing a real star in it's actual location. We even found a way of making the light twinkle gently just like real stars do."

Are you working on any interesting projects right now?

"Margaret our kitchen designer has designed a kitchen island in the shape of a wave. Technically it's very clever, utilising all standard component parts in a new way. The customer has ordered so we are now in the process of creating a 3D CAD drawing which will be sent to our cabinet makers to use with their CNC tools.

If someone is looking for a room from Roots, where's the best place to start?

"Begin with our website: www.rkbb.co.uk", said David. "There's a page there that explains the process and how we work. It's important for all customers to visit our showroom and talk to us about what they'd like from their project. We are able to give very good estimates for work just from outline discussions of what needs to be done. This is important as there are many projects where our style of product and service will simply be too expensive. Generally if you're renovating a home and only going to be there for five years we're not the right people to be talking to. However, if you want work carried out properly and to know that you can call us for help or advice for years into the future, we are exceptionally good value for money."

Roots Kitchens Bedrooms Bathrooms showroom

Vine Farm, Stockers Hill, Boughton under Blean, ME13 9AB, just 1 minute from Junction 7 M2, between Faversham and Canterbury. The showroom is open 9am to 5pm Monday to Saturday.

www.rkbb.co.uk



ORMISTONS

GRANITE AND MARBLE SPECIALIST SINCE 1957

GRANITE - MARBLE - QUARTZ - BASALT - SLATE - LIMESTONE



KITCHEN WORKTOPS SPECIALIST STONework HEARTHs & FIREPLACES

We source our granite and marble from all over the world, offering many of the finest and rarest granites and marbles. We offer a full service from template to fit within five working days, (subject to pre-booking and delivery times)

We also supply stone for shop fitting, restaurants & pubs, hotels, public buildings and private homes.

Visit our Showroom

Open Mon to Fri 8:30am to 5pm
(Saturdays by appointment)

01227 374717

Unit 19 Lamberhurst Farm Dargate ME13 9EP
sales@cjormiston.co.uk www.cjormiston.co.uk



APPLEBY GRANGE KITCHENS



bespoke, hand painted kitchens

- ❖ design
- ❖ build
- ❖ refurbishment

Based in Canterbury, Appleby Grange offer a unique kitchen design & build service.

applebygrangekitchens.co.uk

07779 809 229

SOUTHGATE ELECTRICAL CO. LTD

The Best Electrical Services

Offering a full range of electrical services
from design to installation

- External Electrics
- New Builds
- Access and Security
- Space Heating
- Electric Showers
- Fire Alarms
- Landlord Certificates



T: 01227 712790 / 07889 895394

www.electricians-canterbury.com



RECEPTION TECH

THE COMPLETE AERIAL
& SATELLITE SERVICE

T: 01227 250 077
M: 07904 583384



TRADING
STANDARDS
(APPROVED)



Freeview HD

freesat

Checkatrade.com

Yell.com

www.receptiontech.co.uk



Tel: 01227 500069
or 07874 109171

www.cheesemandecorating.co.uk

paul@cheesemandecorating.co.uk



[cheesemanandson](#)

Paint • Wallpaper • Furniture • Workshops



The Painted Pearl



115 Tankerton Road, Whitstable CT5 2AN

Tel: 07734 721227

www.thepaintedpearl.co.uk

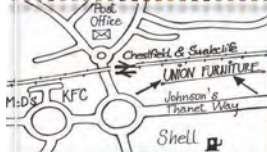
Cole & Son[®]





Union FURNITURE

Invigorate your interiors by exploring Union Furniture's exclusive collection of vintage and designer furnishings and accessories.



open 7 days
a week

★
free parking



@Johnson's Nursery, Thanet Way, Whitstable, CT5 3JD 01227 792030 www.unionfurniture.co.uk



ANTHONY GRAY CLOCKS

Since 1975, our team of skilled craftsmen has been restoring and conserving fine antique clocks and barometers for discerning collectors and members of the trade in several countries

Restoration Service

High Quality
Watch Restoration

Wheel and Pinion Cutting

Dial Restoration

Clock Hand Making

Gliding - Engraving

Case Restoration

Valuations

Parsonage Farm, Marshborough,
Kent CT13 0PG

07860 378122

info@anthonygrayclocks.com

www.anthonygrayclocks.com



Where there's a Will there's a way

Your Will can be a very powerful tool to help your loved ones. It can:

- Ensure your assets are left to the people you choose
- Protect your family - appoint guardians for your children
- Save your family tax
- Give you peace of mind, a very valuable commodity

Just as you take expert advice when buying a new house or investment plan, it's even more important to take expert advice regarding your Will.

If you don't have a Will – now is the time to discuss your wishes. If you have a Will – does it still reflect your wishes and in a tax efficient way?

To review your current Will at no charge contact us today.

Canterbury	01227 643250
Maidstone	01622 698000
Tenterden	01580 765722

www.whitehead-monckton.co.uk



WILL POWER

Your Will can be a very powerful tool to help your loved ones. Just as you take expert advice when buying a new house or investment plan, it's even more important to take expert advice regarding your Will.

There are many reasons for a lack of a Will, or for not reviewing a current Will - we've highlighted a selection below, but you'll see with our assistance these reasons need not stop you from completing a Will.

- **LACK OF TIME** - most Wills are signed and safely stored in our archive after just two meetings: the first meeting to provide your instructions and the second meeting to sign your Will.

- **COMPLEX FAMILY CIRCUMSTANCES** - for us the complex is commonplace, we can advise on the options available to you.

- Too many difficult decisions to make about Executors, Guardians etc. - we can offer guidance, you do not have to



make all of the decisions before your appointment.

- **COST** - yes, there is a cost to making a Will which needs to be considered in proportion to the value of your home, your savings etc.

- **TOO MORBID** - making a Will does remind us of our own mortality, but with a Will safely stored in our archive you can relax knowing that you are leaving clear wishes and that you have provided for your loved ones. Without a Will the assets you have worked hard for will pass in accordance with

the fixed rules of intestacy. So book an appointment now with our friendly solicitors to discuss your Will requirements. You will feel empowered and reassured knowing that your wishes are in place and you can then look forward to the future in a positive light.

For an appointment to discuss Wills, Lasting Powers of Attorney, Deputyships and estate administrations please telephone Kerin Speedie on 01622 698022.

lifestyle

INSPIRING IDEAS FOR YOUR HOME

Coastal living is all about injecting a hint of that carefree holiday atmosphere with the inspirational style that can be found by the sea.



Aye aye captain. Prepare for the night of your life. Imagine the waves, gently washing across the shore. You can hear them from your bed, enveloped in the softest bed linen imaginable.

Coastal stripe navy percale bedding set, from £9 for a pillowcase; duvet cover from £65 for a double, www.secretlinenstore.com



Coastal brass bell, £25, John Lewis



Silver plated mussel eaters, £24.95 a pair from Annabel James, www.annabeljames.co.uk



Seahorse jug, £22, Coastal Home, www.coastalhome.co.uk



Coastal candle, £13, Stoneglow Candles London www.stoneglowcandles.co.uk



Whitstable cushion, £50
French Inspired Interiors, Whitstable
www.frenchwhitstable.co.uk



Large tide clock, £399 (small £329),
French Inspired Interiors, Whitstable



Virginia Casa Marina, from £11 - £59.50,
Copperfields of Whitstable
www.copperfieldsofwhitstable.co.uk



Artesa large oval porcelain serving bowl, £16.50,
Copperfields of Whitstable



Lamp base, £85; lampshade,
£36, Laura Ashley



Nautical knobs, £5.95 each
from The Painted Pearl
www.thepaintedpearl.co.uk



Nothing says summer coastal living quite
like alfresco dining with moules, skinny
fries and a chilled glass of white wine.
Enamel mussel pot, £35
www.coastalhome.co.uk

WORDS: SUSAN HUBBARD • PHOTOS: GEORGE FISK PHOTOGRAPHY

Bubble's on the Rise



With no pier, no prom, no sand and no ‘amusements,’ how did Whitstable get to top a list of fastest-growing seaside resorts in the UK?

Its popularity is unarguable. Any sunny weekend, even in winter, vehicles stream off the fast-moving Thanet Way/M2 connection from London, then process bumper-to-bumper downhill, passengers eagerly pointing at the sea ahead, to arrive in a tiny town where drivers must slow to avoid hordes of happy amblers spilling off the pavements.

Jokingly known as Islington-on-Sea, Whitstable is frequently described in travel articles and on TripAdvisor as ‘quaint,’ ‘chic’ and an essential place to visit, especially for DFLs (Down From London) eager for a quick fix of sea air, fresh fish and chain-free shopping. The enormous success of the summer Oyster Festival in particular (this year 22nd to 31st July) has recently seen the need for a park and ride service - a solution more usual in congested cities.

The town’s other nickname is Whitstabubble, and there is no sign yet that this Bubble is going to burst.

Lou Fowkes, who manages a team of volunteers advising visitors at the Whitstable Shop in Harbour Street, has noticed trends for people

to stay longer and to come from further afield. “We get a lot of Europeans, but now increasingly people from the USA, Asia and Australia,” she says. And some visitors decide to stay a whole lot longer, making the town a hotspot for property buyers.

Yet 20-odd years ago, Whitstable was a shabby sort-of adjunct to Canterbury, where everything shut down on Wednesdays with barely a soul on the street. So how did that change?

Actually Whitstable’s re-invention seems



almost accidental. The town simply wasn't designed as a seaside resort, which is perhaps a big part of its attraction. While neighbours were building piers, proms and hotels as tourism developed in the 19th and 20th centuries, Whitstable quietly carried on with its traditional maritime businesses of fishing, boat-building and salvage. Evidence of this small-scale industry is still all around, and maybe visitors find this a refreshing change from the increasing blandness of city and suburbs.

Alleyways (often quirkily-

"With the big open skies of East Kent much admired by JMW Turner, and sensational sunsets best viewed from the beach in summer, it's no wonder a big artistic community has built up."

named, like Squeeze Gut) which criss-cross the town are now adored by tourists, but not long ago were simply short-cuts for fishermen, boat-builders... and smugglers.

The harbour, the town's biggest draw, is still very much a workplace. A small fleet of fishing boats moor not far from much bigger vessels



which dock at the working asphalt plant on the East Quay. They also share the space with old Thames sailing barge

Greta which, though now offering pleasure trips, used to carry ammunition, beer, grain, malt and building products (and

took part in the Little Ships evacuation from Dunkirk).

There are cockle and whelk-processing businesses at the harbour too, and shellfish - readily for sale - has long been a Whitstable commodity. Follow the shingle beach westwards and, passing the lifeboat, you'll quickly come to the Whitstable Oyster Fishery

Company - unmistakable with its large piles of shells outside. The WOFC claims a long history of farming Royal Whitstable Native Oysters, though before that the Romans were gathering and shipping them to Rome.

It's just a few steps more to a seating area called Cushing's View, a tribute to the actor Peter Cushing, mainly associated with Hammer horror films. He lived a few hundred yards further along the beach (look for the blue plaque), and was cherished by the town: it's said he taught many local children to swim, and Whitstable people closed their businesses to line the streets for his funeral procession in 1994.

The next local landmark is tucked in a small enclosure

beside the beach. It's a preserved oyster yawl called The Favourite, which was built in one of several small boatyards which operated nearby - another reminder of recent industry.

Glance ahead at the Old Neptune pub sited actually on the shingle and, if it's the right time of day, take time to savour a glorious sunset over the Isle of Sheppey. Then slip through a short alley to emerge in Island Wall, a long quiet road parallel to the sea with many clapboarded houses, built for maritime folk but now popular for holiday cottages.

Turn left back towards the centre of town where Harbour Street - lined with interesting boutiques and galleries - is crowded at weekends. The more workaday High Street it adjoins is often remarked on for the survival of independent butchers, greengrocers and bakeries.

A browse along Harbour Street returns you to the harbour, ready to explore the other direction. Walk along the newly-buttressed South Quay, where a revitalised artisan market will open this summer, and take a left back to the sea where, if it's low tide, a half-mile spit of shingle known as



The Street will be uncovered.

Move inland where grassy Tankerton Slopes begin, and a short climb is rewarded with a view of Whitstable Castle and its delightful public gardens. This was an elaborate family home built first in 1789 by one local businessman and extended later by another. After restoration, it was opened in 2010 by local resident, the comedian Harry

Hill, to offer public meeting rooms and a wedding venue.

It's off Tankerton Slopes that Whitstable Regatta has been held for the last 200-odd years (this year on 6th to 7th August), marking local maritime history, but nowadays including a fantastic firework display over the water.

The regular events calendar is being swelled to reflect an

increasing association between Whitstable and the arts. This summer sees both a literary festival (WhitLit 11th to 15th May) and the visual arts-focused Whitstable Biennale (4th to 12th June). Music is everywhere - many pubs host live bands all year round - and Whitstable has its own theatre, the Playhouse.

“Whitstable ticks so many boxes for anyone who is remotely creative,” says Catriona Campbell, who runs the Kent’s Creative Coast campaign. She lists many galleries dotted about town - notably the Horsebridge Centre, near the Oyster Fishery Company building, and the Print Block on the harbour’s East Quay.

With the big open skies of East Kent much admired by JMW Turner, and sensational sunsets best viewed from the beach in summer, it’s no wonder a big artistic community has built up.

But it’s not just artists who are moving in. All kinds of people, some with plenty of money in their pockets, are settling and adding to the local economy, providing custom for the independent shops the town is so proud of, and a growing range of eateries from cosy corner cafes to the Michelin-starred Sportsman, official Best Gastropub in Britain.

Whitstable offers a very good life - a great place to live, as well as to visit.

Oysters



Oysters certainly divide opinion, with many of us loving that salty shot, whilst others shudder at the mere thought! One thing is for certain though, they are becoming very fashionable, with bars, fishmongers and restaurants all reporting more and more demand for this delicate mollusc.

Whitstable Oysters are shellfish of the species *Ostrea edulis* (Native oyster) and *Crassostrea gigas* (cultivated European oyster) the meat of which is fat and succulent. They can only be found in the oyster beds in the vicinity of Whitstable.



WHITSTABLE LAVENDER

Essential oil, water,
scented bags, candles,
fragrances and
wheat bags, bath
products, towels,
cushions, jams,
cake mixes & fudge.

Plus many more bespoke items
including gift boxes.

Wedding favours and confetti.

www.whitstablelavender.com

7a High Street, Whitstable CT5 1AP



HERBACEOUS OF WHITSTABLE



We stock a huge variety of natural foods and
products from around the world, environmentally-
friendly cleaning products, essential oils and all
things herbal. Why not have a virtual tour on
Google before you make your visit?
You're sure of a warm welcome.
We're a few steps from the library.

27 Oxford Street, Whitstable CT5 1DB

Tel: 01227 277799

www.herbsandremedies.co.uk

WHITSTABLE STOVE SHOP

"We're warming to you."

FOR:

LOG BURNING AND MULTI-FUEL STOVES
&

BBQs, PIZZA OVENS, FIREPITS, CHIMENEAS,
PRIMO GRILLS CERAMIC BBQs, BIO-ETHANOL FIRES,
LOCALLY PRODUCED CHARCOAL, KINDLING AND LOGS

TO VISIT OUR
CHECKATRADE.COM PAGE,
SCAN THE CODE BELOW.



2 SADDLETON ROAD, CT5 4JB
01227 266209
WHITSTABLESTOVESHOP.CO.UK



SURMANS

Since 1932

**TRADITIONAL BUTCHERS
& DELICATESSEN**

Quality local beef, pork, chicken,
lamb, burgers, kebabs, sausages.

Homemade pies, local cheeses,
cold meats, paté & quiches.

BBQ



152 Tankerton Rd,
Tankerton,
Whitstable,
Kent CT5 2AW

Tel: 01227 272047

THE OLD NEPTUNE

A truly pleasurable experience



LIVE MUSIC

SATURDAY 9PM, SUNDAY 6PM

**FOOD SERVED DAILY FROM 12 - 6PM
WEATHER PERMITTING**

Marine Terrace, Whitstable CT5 1EJ

01227 272262

WWW.THEPUBONTHEBEACH.CO.UK



Theoldneptune

**Great labels
from across
Europe!**

Emily Bond, The New Eden,
Libra, St.Eval Candle Company,
Voyage Maison, Bradley,
Branche d'Olive, Bomo Art,
La Rochère, Hanjel Mobilier
& many more!

french...
inspired interiors

67-69 Oxford Street,
Whitstable, Kent, CT5 1DA

01227 634138

shop@frenchwhitstable.co.uk

www.frenchwhitstable.co.uk

@french_suze



WOOLLEY'S MENSWEAR

Est. 1914

Stockists for:

Trojan Clothing, Warrior Clothing, Lizard King,
Bewely and Ritch & LaidBack USA.

Also Bailey & Failsworth hats

58 High Street, Whitstable CT5 1BB

Tel: 01227 272572

www.woolleymenswear.co.uk

the HORSEBRIDGE centre



Visit the vibrant Horsebridge Arts and Community Centre in Whitstable, which offers free entry art exhibitions, a popular café with balcony, rooms for meetings and classes, and an entertainment programme including film screenings, talks, and first-class live music. Open every day.

COMING SOON

Thursday 14th April, 2pm, film

The Lady in the Van (12A)

Saturday 16th April, 8pm, music

Not The Rolling Stones

Saturday 23rd April, 8pm, music

Sarah Gillespie

Friday 29 April, 7.30pm, film

Carol (15)

Saturday 14th - Sunday 15th May

WhitLit book festival

Friday 20th May, 7.30pm, film

Grandma (15)

Saturday 21st May, 7.30pm, music and talk

Chris Difford from Squeeze

Thursday 26 May, 2pm, film

Brooklyn (12A)

Friday 27th May, 7.30pm, talk

Making War Horse the Movie

Saturday 4th - Sunday 12th June

Whitstable Biennale art festival

Thursday 16th June, 2pm, film

Bridge of Spies (12A)

Saturday 18th June

Far East of Whitstable (Chinese Festival)

Friday 24th June, 7.30pm, film

The Danish Girl (15)

Tel: 01227 281174

www.horsebridge-centre.org.uk



Pics:

The Horsebridge Centre

The Horsebridge café

Far East of Whitstable,
Saturday 18th June,
celebrates Chinese culture.

Chris Difford, co-founder
of Squeeze, appears on
Saturday 21st May

Cleal's
Upholstery
**Now with over
45 years experience**



Why replace your furniture when I can:
Repair and recover your dining chairs
Carry out any re-upholstery and recovering in a wide range of fabrics
Renew old cushion - Replace rubber webbing - Renew old springs
Cane and rush seating - Caravan and boat cushions

☐ Domestic
☐ Contract
☐ Antique
☐ Modern



21 Oakwood Drive, Whitstable
Kent CT5 1NY
Tel/Fax: 01227 273811
Email: clealsupholstery@hotmail.co.uk

WAREHAMS
Antique Garden Ornament - Gustavian Furniture



68 Oxford Street - Whitstable CT5 1DG
Mobile : 07831 210139
www.warehams.com

Super Maids
Established 1988
Domestic Cleaning Services Ltd

Regular or One-off Cleaning
Homes and Holiday Lets
End of Tenancy
Moving Cleans
Spring Cleans

Professional, Friendly, Reliable Service

CALL US NOW FOR A FREE QUOTATION

Tel: 01227 277033
www.supermaids.co.uk info@supermaids.co.uk

Ed Parry
Plumbing & Heating

Installation, Servicing & Repair

- Boilers
- Cookers
- Central Heating
- Bathrooms
- Power Flushing
- Showers






Landlord gas safety certificates

01227 266236 • 07976 925224
ed.parry@me.com
www.edparryplumbingandheating.co.uk

PJA
Peter Jackson Architects



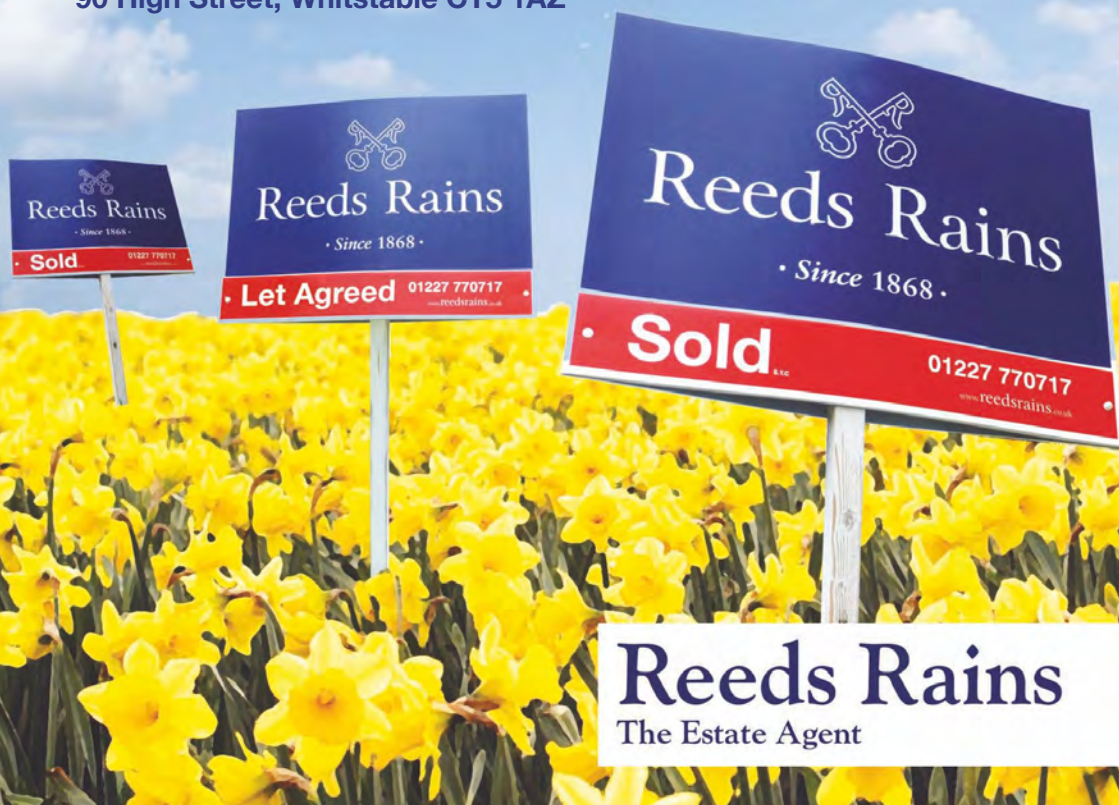
**Designing
spaces
for you**

Harbour Offices, Whitstable, CT5 1AB
01227 770470
www.peterjacksonarchitects.co.uk

Reeds Rains boards are SPRINGING UP EVERYWHERE will yours BE NEXT?

Find out how much your property is worth today,
to book a **FREE** valuation call **01227 770717**

Or pop in and see us
90 High Street, Whitstable CT5 1AZ



Reeds Rains
The Estate Agent



JENNINGS FARM COTTAGE

Pluckley

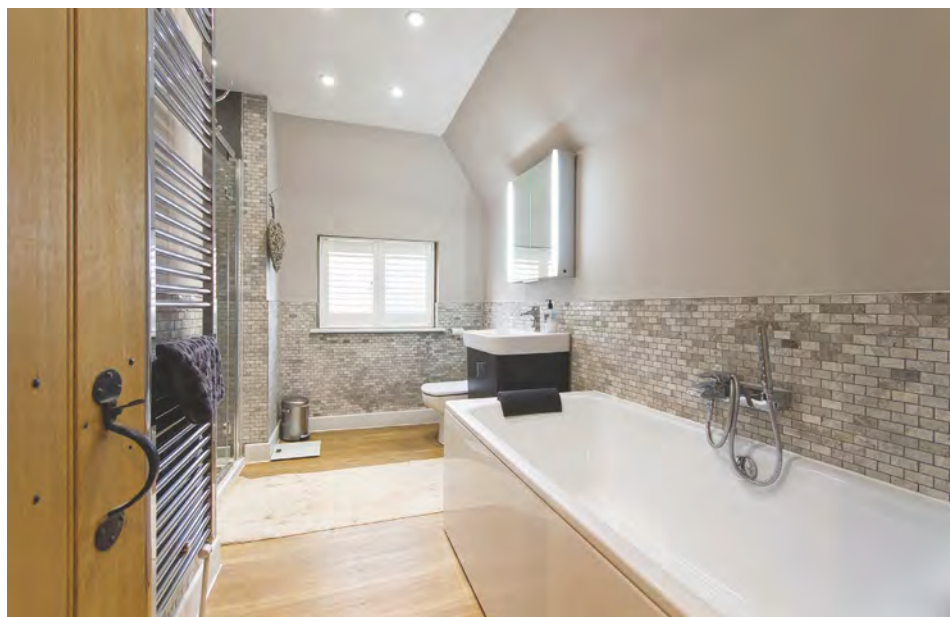
A beautifully restored Grade II listed three bedroom semi-detached family home believed to date from 1470-1490 with off-road parking and a 120' (36.4m) rear garden, situated in no-through country lane on the edge of the sought after historic village of Pluckley.

This charming period property has been lovingly improved by the present owner to create a stylish, well planned family home cleverly combining period features with contemporary fixtures and fittings.

Accommodation is arranged over two floors comprising a JM Interiors fitted kitchen/dining room, utility room, delightful sitting room with exposed timbers and feature inglenook fireplace with wood burning stove, hand made solid oak internal doors, three bedrooms (one with en-suite cloakroom) and contemporary family four-piece bathroom suite.

Outside, the property enjoys a lawned front garden with a gravel driveway providing off road parking for two vehicles and a sizeable enclosed rear garden.





The property is situated in a most beautiful part of the Kent countryside on the outskirts of the village of Pluckley. Pluckley is famous for its orchards and farmland and, in particular, being the setting chosen for the television series “The Darling Buds of May”.

The village enjoys historic pubs, Church, Post Office & General Stores, butcher’s shop, farm shop and a well respected primary school. The area is rich in natural beauty with an abundance of public footpaths and horse riding routes, providing an amazing playground for the outdoor enthusiast.

Transport links are well served with a main line railway station in Pluckley village which provides fast access to London Bridge, Cannon Street and Ashford International station with its high speed 37 minute Javelin service to London St Pancras, in addition to being just two miles from Charing Station with connections to London Victoria. Excellent road networks

are also available leading to the A20 and M20 at junction 9, some 6 miles distant, providing access to London and the Kent coast.

Properties of this style are rarely available and we strongly urge interested applicants to make immediate arrangements to view to avoid disappointment.

PROPERTY DETAILS

Address: Jennings Farm Cottage,
Pluckley, Kent

Price: £445,000

For more information contact:

Saddlers
Reed House, 1-3 Old Ashford Road,
Charing TN27 0JG

Tel: 01233 7131278

property@saddlersresidential.co.uk

www.saddlersresidential.co.uk

Selling or Letting Your Property?



Independent Estate & Letting Agents with Offices in Kent and London Providing Bespoke Marketing for Rural & Village Homes.
Call us for Confidential Advice on **01233 713127**

www.saddlersresidential.co.uk





FLORIS HOUSE, Herne Bay

Built in circa 1830 and completely redesigned in 2013/2014 this stunning Georgian property is situated on the Hampton side of Herne Bay just a short stroll from the beach and town centre and only approximately 4 miles into the popular harbour town of Whitstable.

The seller has taken inspiration from the beautiful Italian region of Tuscany and has used her flare for design to create a home full of light and tasteful style. There are period features that remain including original wooden

floors, ornate coving, decorative ceilings and sash windows. Further features include vaulted ceiling in the bedroom and a beautiful formal courtyard garden, a delightful secluded environment.

The accommodation is presented in an artistic style and comprises entrance hall, kitchen/ diner, lounge over looking the inspiring Italian courtyard, laundry room, garden room and wet room. To the first floor you will find the spacious master bedroom with original wood





floors and en-suite facilities, there is a further double bedroom with vaulted ceiling and a third bedroom with wc. This property has been lovingly restored and will feature soon in a popular Home Style magazine. Floris House also has a driveway to the front where the current owner parks her car.

Floris House forms part of a late Georgian enclave, leading onto Oxenden Square which is famous for having a number of swept Georgian balconied properties and an array of other quality period homes surrounding the central green. Given its cul de sac location this area creates its own little oasis from a central town position. Oxenden Street is a desirable road within close proximity to the sea front at Hampton in the popular coastal town of Herne Bay, which benefits from a range of local amenities including retail outlets and educational facilities. There are also a good range of leisure amenities including rowing, sailing and yacht clubs along with a swimming

pool and cinema. The mainline railway station (approximately 1 mile distant) offers fast and frequent links to London (Victoria approximately 94 minutes) as well as the high speed Javelin service to London (St Pancras approximately 78 minutes).

The property also offers excellent access to the A299 which gives access to the A2/ M2 motorway network. Conveniently only 5/10 min drive to popular Whitstable.

PROPERTY DETAILS

Address: Floris House, Herne Bay

Price: £425,000

For more information contact:
Reeds Rains (Whitstable Branch)

Tel: 01227 770717

whitstable@reedsrains.co.uk

www.reedsrains.co.uk

So you think all window companies are the same... *think again!*



Residence 9 is the perfect replacement window system for traditional properties and homes within conservation areas requiring new windows due to its period styling.

www.orchardwindowskent.com



 **Orchard Windows**

Tel: 01634 261757

6 Orchard Street, Rainham,
Gillingham ME8 9AA

Save on your home insurance



Insurance for all types of homes including:

- High Value Homes
- Property Undergoing Renovations
- Non-Standard Construction
- Listed Buildings

gsi-insurance.com

GSI Insurance Services (Southern) Ltd
118 John Wilson Business Park
Whitstable
Kent
CT5 3QY

Tel: 01227 772 775

Your local broker has it covered

Anthony Swaine

ARCHITECTURE LTD

Conservation • Design Consultancy • Listed Buildings
Urban Design • Joinery Detailing • Traditional Shopfronts



**Initial consultation undertaken
free of charge**

**Specialising in traditional design & works to
historic buildings; timber framed structures; &
new buildings in the historic context**

The Bastion Tower,
16 Pound Lane,
Canterbury,
Kent CT1 2BZ

Tel: 01227 462680
mail@anthonyswaine.co.uk
www.anthonyswaine.co.uk



conker
conservation
chartered building surveyors

Designers of energy efficient, healthy & sustainable
buildings, refurbishments & extensions

www.conker.co



RICS

6 The Stour Centre
22-24 Stour Street
Canterbury CT1 2NZ
Tel: 01227 786900
paul@conker.cc



Call Andy Ballman

0800

118 22 68

- Conservation/lead work specialist
- Tiling/slatting • Fascias and guttering
- Flat roofs - felt and fibreglass

Office: 01227 741094 Mobile: 07820 875998
Email: andy@kentroof.com www.kentroof.com

Uniques Furniture Shop has
relocated to:
18.4-18.5 Wealden Forest Park,
Herne Common,
Herne Bay CT6 7LQ
(near Wildwood)



UNIQUES
Pine • Oak • Painted Furniture Shop

Bespoke & Revamping Service

www.uniquesfurnitureshop.co.uk 01227 479007



Established for over 20 years, Uniques
Furniture Shop in Kent specialises in
quality wooden furniture at affordable
prices.

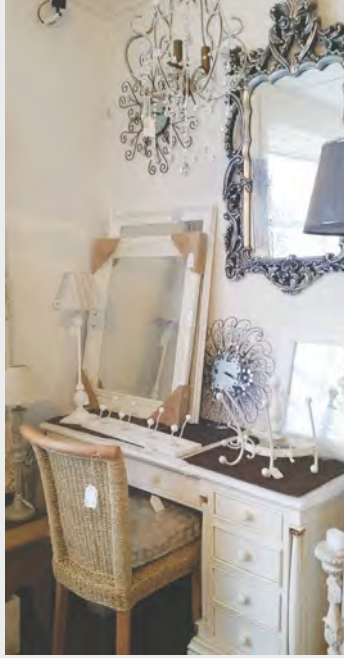
Come and browse our new showroom
where you can see first hand the styles
and finishes on offer.

Bespoke items can be created to fit the
exact specifications and style of your
interiors. A beloved piece of furniture
can also be given a new lease of life with
our restoration and revamping service.



enquiries@uniquesfurnitureshop.co.uk | www.uniquesfurnitureshop.co.uk

Old English Pine



Looking for stunning antiques, reproductions, French style white painted furniture or bespoke pine units? Look no further than us.



Established over 30 years, the store is spread over three floors. You will be amazed at the choice.

We also stock a wide range of beautiful reasonably priced accessories to make your house a home.

Find the perfect gift for friends and family.

100/102 & 90 Sandgate High St, Sandgate Folkestone CT20 3BY. Tel: 01303 248560

www.oldenglishpinekent.co.uk

The perfect choice for period windows

CGS Blinds and Shutters have been trading for almost 15 years. The business is family owned by father and son team Chris and Gary, and they have a 100% customer guarantee policy.

The shop which is in Tankerton High Street, Whitstable, has recently been refurbished and looking modern and fresh. There are new display units and a huge selection of blinds and fabrics, different textures, colours and styles to choose from.

CGS offer all types of blinds and shutters, including romans, rollers, verticals, metal and wood venetians, pleated and conservatory blinds. From

modern greys and silvers, to classic stripes and florals, they have them all.

The shutters they supply are of the highest quality. Choose from vintage charm or contemporary minimalism. A choice of five shutter styles and 117 painted and stained finishes and colours; even custom painted to suit your colour scheme.

Shutters have become very fashionable in recent years and they provide an ideal solution for any awkward or unusual shaped windows, arched, circular, hexagonal or even triangular because they are custom made to fit perfectly. The Vienna range

is waterproof, so perfect for bathrooms and wet rooms.

Whatever type or style of Blinds or Shutters you need, CGS offer a personal service without the sales pressure. They will be on hand to see your initial enquiry through to the perfectly fitted end product.





CGS BLINDS & SHUTTERS

Call in for a FREE no obligation quote
to our newly refurbished showroom

Tel: 01227 278643

107a Tankerton Road, Whistable CT5 2AJ

www.cgsblinds.co.uk



Find us on Facebook



The evolution of the KENT PEG TILE



Paul Lythgoe, Managing Director of Tudor Roof Tile Co Ltd explains the history and architectural significance of the traditional Kent Peg Tile.



Kent Peg Tiles hold a special place in the English architectural landscape - particularly in the South East of England, where they were once seen on nearly every town house, country residence, barn, oast house and farm property.

Dating back as far as the 12th and 13th centuries, the name 'peg tile,' originally came from the softwood pegs, which were driven through two square holes in the top edge of the tiles, attaching them to the laths or battens.

They were usually smaller than tiles found in other parts of the country and, despite the Royal Charter of 1477 decreeing that plain tiles should be standardised to 10½" x 6¼" countrywide, Kent Peg Tiles remained typically 10" x 6".

As they were originally made by local or travelling craftsmen, who relied on hand moulding and simple firing techniques, they inevitably had a wide variation of texture, camber and colour ranging from pale orange to dark red.



Unfortunately, the widespread use of traditional peg tiles gradually declined with the availability of cheaper mass produced machine made clay and concrete tiles in the 1900s.

However, in recent years, tighter planning regulations and recognition of the need to conserve our historic buildings with sustainable and more visually sympathetic materials has resulted in a renewed interest.

Reclaimed or new?

Old peg tiled roofs are constantly falling into disrepair, largely through damaged pegs, insect or fungal attack, wind-lift and the effects of frost, particularly on north-facing slopes.

Secondhand tiles from specialist suppliers have traditionally been the preferred choice on historic buildings, particularly if only a few tiles are damaged. They blend in extremely well, provided they are of a compatible size, texture and colour and reclaimed from the same locality. However, the supply of good reclaimed roof tiles from legitimate sources is ultimately finite, and potentially expensive, as suitable tiles have to be carefully sourced from unlisted, abandoned or derelict buildings.

Furthermore, after many years of wear and tear, their condition and

TRADITIONAL CONSERVATION



life expectancy is inevitably uncertain - as, clearly, they have not been tested to EN and BS standards and do not hold performance guarantees.

In cases where large sections or entire roofs need to be replaced, new hand made peg tiles, specifically chosen for their sympathetic qualities, are often a much more reliable and a cost effective option.

Machine or hand-made?

One of the problems architects, conservationists and owners of heritage homes face is that the 'rustic' character of the original Kent Peg Tile, with its subtle variation in texture, colour and camber is difficult to replicate using modern manufacturing methods.

Despite significant advances, the majority of mass-produced 'machine made' clay roof tiles are still far too dull and uniform in appearance to be a convincing substitute.

A small number of 'studio potters' are still making bespoke hand-made tiles, relying on skilled craftsmen to not only painstakingly form each individual tile, but to also recreate

"The Kent Peg Tile is continuing to evolve and develop to meet the changing needs of today's market"

bespoke colourings. Such meticulous detailing is often reflected in their production costs.

However, there are now some manufacturers, such as Tudor Roof Tile Co Ltd, who combine the best of both traditional and modern tile making techniques to create a time weathered 'olde world' rustic look.

As the tiles are individually hand pressed, moulded and trimmed, they have the idiosyncrasies of traditional sand faced peg tiles, whilst highly advanced firing techniques ensure exceptional performance and a durability that exceeds British Standards.

Historical authenticity

When restoring a historic roof it is important to respect its original character and detailing.

For instance, the smallest change from the original peg tile size can damage the overall aesthetic. This is why Tudor offers a range of



non-standard bespoke sizes in a variety of soft muted tones that age and blend well with the faded roofs of older buildings.

Made with either square or round peg holes, they are suitable for use with traditional wooden and modern aluminium pegs.

By the mid nineteenth century peg tiles evolved into plain tiles. Tudor also makes the 'ribbed' plain tiles, which hook onto the battens and are more suited to modern construction methods.

The modern peg tile

Whilst remaining true to its roots and original character, the Kent Peg Tile is continuing to evolve and develop to meet the changing needs of today's market.

Available with a single or double camber, in wide range of colour options, with matching

ornamental tiles, they are not only being specified for listed properties in conservation areas, but adding value, character and individuality to modern properties.

For those architects and conservationists wanting to create a roof that is very much rooted in our architectural heritage, the Kent Peg Tile is still a very attractive option.

Tudor roof tiles are available from leading roofing and builders merchants.

For more information, contact:

Tudor Roof Tile Co. Ltd,
Dengemarsh Road, Lydd,
Kent, TN29 9JH.

Tel: 01797 320202

info@tudorrooftiles.co.uk

www.tudorrooftiles.co.uk





SJ MILWARD

Plastering Contractor

(Established since 1976)



SERVICES PROVIDED

- Traditional and modern methods
- Listed Buildings & period properties
- Lime & hair work
- Restoration & conservation
- Interior and exterior

Tel: 01227 281242
or 07721 054949

sjmilward@hotmail.com



CARPENTRY & BUILDING CONTRACTORS LTD

T: 01227 750193

M: 07889 248011

email: adrian@wwcarpentryltd.co.uk

Established 1992



From the Imposing Country Residence, Stunning Barn Conversions to the beautiful Chocolate Box Kentish Cottage

WW Carpentry and Building Contractors have a fine reputation for creating beautiful, high-quality home improvements, extensions, conversions and period restorations.

Our Work Speaks for itself

visit wwcarpentryltd.co.uk
for some fine examples of work undertaken

- Farm Building Conversions
- Listed Building Works
- Period Restorations
- Traditional Oak Framing Works
- Loft Conversions
- Residential Extensions and Internal improvements



WW Carpentry & Building Contractors Ltd | Perry Wood | Selling | Kent | England | ME13 9RZ

www.wwcarpentryltd.co.uk



Slenderline[®]
GLASS

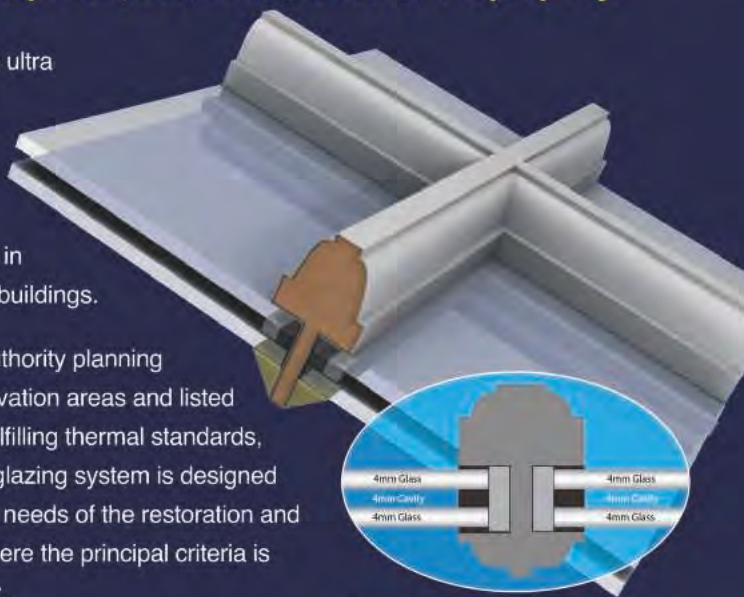
**Fast and
Reliable Service**

Sealed Unit Solutions for all Sash Windows

Designed for period, conservation and listed property

Slenderline Glass is an ultra modern solution to an age-old problem; high performance with outstanding aesthetics for windows in traditional and historic buildings.

Compliant with local authority planning permissions for conservation areas and listed properties as well as fulfilling thermal standards, this high performance glazing system is designed specifically to meet the needs of the restoration and replication sectors - where the principal criteria is authenticity and beauty.



WHITE SPACER NOW AVAILABLE

The Warm Edge Spacer combined with the Krypton gas increases thermal efficiency of the glass, whilst the neutral appearance blends with any frame finish.

To accommodate a range of traditional rebates, Slenderline Glass is available with an overall unit thickness of 11mm or 12mm and a sightline dimension of 7mm.

Call us now for a quote
01732 885030

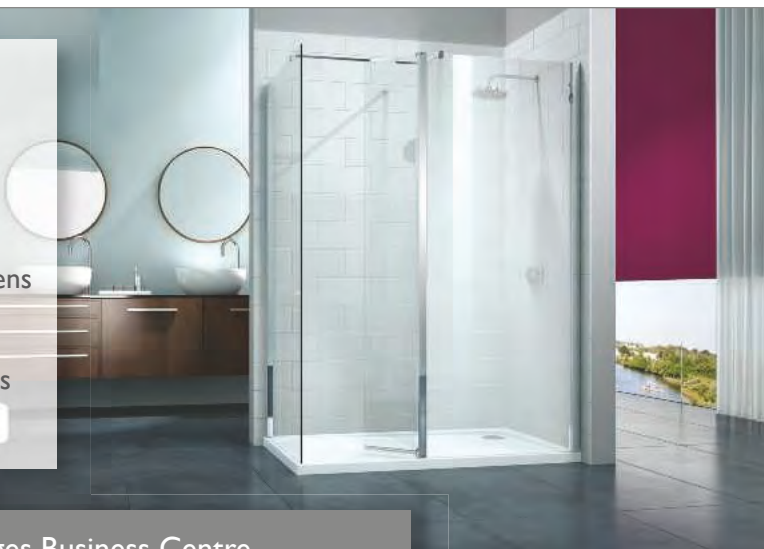
info@slenderlineglass.com

www.slenderlineglass.com

Slenderline Glass Ltd, Unit 7 Bourne Enterprise Centre, Wrotham Road, Borough Green, Kent TN15 8DG

Part of the EJ Cocker group

- Floor Tiles
- Wall Tiles
- Glass Doors
- Unit tops
- Shower Screens
- Splash Backs
- Name Plaques
- Leaded lights



Unit 8, St Georges Business Centre
Brunswick Road, Ashford, TN23 1ED
Tel: 01233 626045
www.cpglassandwindows.co.uk

CP Glass
& Window Repair Centre

Allbits
Plumbing Supplies Ltd

www.allbits.co.uk

Supplying you with massive savings
throughout Kent and beyond

Our large Bathroom Showroom has many
different styles and ideas on display, for you
to feel, touch and experience the quality for
yourselves.

At our trade counter, we offer a friendly helpful
service and stock many of your Plumbing
essentials.



Unit 60 John Wilson Business Park,
Whitstable, Kent CT5 3QT
allbitswhitstable@yahoo.co.uk

01227 281648

The Barefoot Welder

Bespoke hand crafted metal work

The *Barefoot Welder* is an individual who is passionate about creating bespoke iron work, with years of experience in design and fabrication. The *Barefoot Welder* creates unique pieces based upon each clients wishes through a free consultation. This gives him an opportunity to gain a true understanding of a customer's needs.

No two designs are the same due to the hand crafted fabrication. The creations are truly unique, adding a real 'wow' factor to any home or outdoor area. All commissions are given the same amount of care and passion with no job being too big or too small.

The *Barefoot Welder* is based in Maidstone, but can undertake work anywhere in the Southeast.

- Gates & Railings
- Balconies
- Chimneas
- Firepits
- Garden Sculptures
- Upcycled Furniture

07531 009630

www.thebarefootwelder.com



Period property specialist contractors



- Complete restorations
- Lime mortar manufacture and sales
- We stock a wide range of natural Hydraulic Limes and pre-mixed mortars
- STEICO breathable insulation, stockists and installers
- Lime mortar pointing
- Mortar matching service
- Brick matching and replacement
- Brick tinting
- Structural crack repairs
- Period property damp problems solved with traditional methods
- Free property survey

 Restoration
Lime



Unit 9, Barton Business Park, CT1 3AA
(by appointment only) Tel: 07977 027556

www.restorationlime.co.uk
restorationlime@gmail.com

SPOTLIGHT ON...

Sheldon Spa



For an indulgent and relaxing hen party, look no further than the stunning Sheldon Spa in Faversham; a haven of tranquility and calm which is guaranteed to impress.

by Ria Langner, lifestyle blogger
www.marianoell.com



special occasions.

Ria had decided that she wanted a relaxed atmosphere for her friends, and for Katie to come away 'feeling like a million bucks'.

'I think that I always had a spa in mind. It felt like it would offer everything that I wanted for my friend. A spa just seemed like the perfect treat for a group of women to escape their

to-do lists and duck out of normality for a few hours for some well-deserved relaxation and pampering.

"When we arrived on a Sunday, it looked idyllic and didn't feel like we were anywhere near our local town. It was so pretty and serene. From the moment that we stepped through the door, nothing felt like too much trouble and all of us girls felt immediately at ease and ever so comfortable.

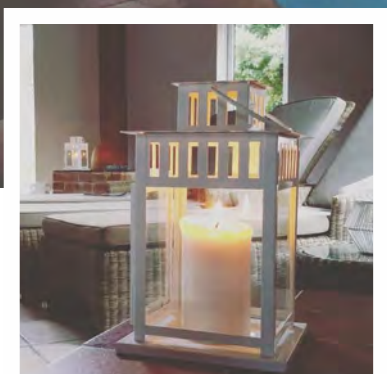
All the ladies were impressed with their treatments - from pedicures, to back, neck and shoulder massages - we all felt so relaxed.

"Inside, it was absolutely stunning. The attention to detail was on point and for somewhere that looked modest from the outside, it was incredibly spacious. I loved the decor. It is so fresh-looking and subtle but very sweet - a perfect girly haven! Before I left home that morning, I had shoved a book in my bag but next time, I'll leave it at home... I wouldn't

I can't believe that I have been living so close to such a wonderful little secret in the shape of Sheldon Spa," wrote Ria Langner after organising a successful hen party for her friend Katie at the venue in Lees Court Road, Faversham.

Sheldon Spa offers a comprehensive range of beauty and holistic treatments to relax and rejuvenate the body and mind. Facilities include an indoor heated pool, sauna, hot tub and garden, accompanied by personal service. There is a loyalty scheme, and gift vouchers are available. Groups are welcomed to celebrate





need it. There were so many places to sit and relax and I'm sure that I lost a fair while gazing out of the windows at the beautiful garden.

"Before we left the spa, I made sure that I used each and every one of the products on my face and body. I love Clarins products

and it was such a nice touch that they were complimentary. I like lotions and potions but I have quite sensitive skin, so it was nice to see them use a reputable and trustworthy brand which I love. Huge thumbs-up!

"We had all that we needed to relax and let go, and plenty to do while we awaited our treatments. I had a Weleda facial and I still struggle to find the words to describe how amazing that was. I hardly felt like I was in my body and that is for real! It was such an incredible experience. My skin felt great and

for a week after, I didn't put a scrap of make-up on my face.

"All the ladies were impressed with their treatments - from pedicures, to back, neck and shoulder massages - we all felt so relaxed. There were a lot of sad faces when it was time to leave, but we didn't go before indulging in a delicious cream tea to finish off such a wonderful day.

"I honestly can't say a bad word about Sheldon Spa and I'm just kicking myself that I didn't find it sooner. It is important to feel comfortable in our surroundings and able to embrace our different body shapes and sizes. You really will come away feeling amazing about yourself and like you are seriously winning at life. I cannot wait to go back".



Win a 3 hour stay for two at SHELDON SPA

One lucky reader will win a relaxing three hour stay for two people at Sheldon Spa in Faversham with use of the heated pool, traditional sauna and hot tub, with the choice of one of the following thirty minute treatments each:

- Indian Head Massage
- Therapeutic Back, Neck & Shoulder Massage

TOTAL VALUE OF PACKAGE £156.

To enter send your name, address and telephone number to: dawn.cnkent@gmail.com

The draw closes on 31st May 2016.





FOR SALE

Birchington

Long established dress agency
business for sale

For further details contact Paula on
07971 817942

*For honest and sincere
psychic readings from
a naturally gifted
clairvoyant*

ASK LOUELLA

I give all readings
personally.

Fixed rates.

Established 30 years

Text 07871 991718

For ents only

www.canterbury-brass.co.uk



Hinges & Brackets

35 Wincheap
Canterbury, Kent, CT1 3RX

Tel: 01227 464652

hingesandbrackets@aol.co.uk

SBI Verandas & Awnings



Awnings and Verandas supplied and installed.
Awnings refurbished, covers cleaned and replaced.

Blinds, Window Films, Insect Screens.



0800 0742 721 sbiproducts.co.uk

CLAGUE ARCHITECTS

Specialists in modern & traditional
designs to historic properties



Call to arrange a free initial meeting
to discuss your project

t: 01227 762060

e: jameskenton@clague.co.uk

w: www.clague.co.uk



Tel: 01 303 230027 or 07706 095354



Listed & period property specialist

- Bespoke kitchens • windows and doors • Staircases • Garage doors
- Timber renovations & repairs

For bespoke handmade joinery services
in Kent, get in touch with Artisan
Kitchens & Joinery today. We offer a
personal, professional service and
a free no obligation quote.

www.artisankitchensandjoinery.com

Looking to promote your business?



CONSERVATION NEWS Kent is delivered to thousands of Grade I & II Listed Building by Royal Mail, through conservation areas, surrounding villages and large period homes. We are a free quarterly publication, created to enable local businesses, artisans and tradesmen to market their trade and services to reach a unique target audience.

We are editorial led with well written features and case studies, covering period homes, gardens, renovations and interiors to promote a variety of Kent businesses.

If you would like to market and grow your business in this niche publication then please contact us on 07725 732535 or send an e-mail to dawn@cnkent.co.uk.

Copies are available on request and can be picked up in selected hotels, coffee shops, garden centres and public buildings.



I THOUGHT I NEEDED
A NEW KITCHEN
UNTIL I DISCOVERED...



THE WORKTOP THAT FITS ON TOP

Over 50 colours to choose from all fully fitted by us!



We also fit new kitchen doors!

Visit our showroom, or call to book a free home consultation, and we'll show you how easy it is to transform your kitchen with our granite, quartz, recycled glass and porcelain worktops.

Call now 01622 297371

At **Granite Transformations** we offer a complete package for updating your surfaces, splashbacks, doors and appliances. Fitting a new worktop is fast and effective with each top custom made to your exact requirements. There is no need to remove old worktops, we **simply fit directly over** your existing surfaces, guaranteeing complete peace of mind from start to finish. To complete the look, we also supply and install **made-to-measure** kitchen cabinet doors and drawer fronts, in a wide choice of colours, finishes and styles.

Maidstone Showroom: 01622 297371

Newnham Court Shopping Centre, Bearsted Rd, Bearsted, Maidstone ME14 5LH
Open 9.30am - 5pm Mon to Fri, 9.30 - 5.30pm Sat, 10am - 4.30pm Sun

www.granitetransformations.co.uk/maidstone

 **GRANITE**[®]
transformations
kitchen & bathroom makeovers

MIRAMAR - CARE & NURSING HOME



Miramar
HERNE BAY

Award Winning Care
delivered to you
by the Miramar

From £590 per week

**Congratulations to the team at the Miramar
for becoming Regional Winners of
The Great British Care Awards 2015.**

Newly refurbished 2 bedroom apartments
with stunning sea and garden views!
Enjoy activities 7 days a week including
trips out. Fully licenced restaurant serving
great home cooked food. All laundry
and housekeeping taken care of with no
maintenance or bills to worry about.

**Talk to Debbie today
01227 671100**

THE *Lcu*
BENCHMARK IN
care

165 Reculver Road, Beltinge, Kent, CT6 6PX

www.signature-care-homes.co.uk

Signature
setting the standard for senior care