

CONSERVATION NEWS

Kent

Winter 2018 • Complimentary

Heaven Sent

A TIRED SEASIDE HOUSE IS
BROUGHT BACK TO LIFE

How to create a cosy
LIVING ROOM



Ashford & Cranbrook Roofing

Traditional, modern and heritage roofing



- Built on reputation • Free, no obligation quotes
- Leading the way in quality • Kent Peg tile specialists

www.cranbrookroofing.co.uk



Tel: 01580 242925



Custom Made JOINERY

We offer professional joinery services for domestic and commercial clients throughout Kent.

With over 28 years' experience, we use traditional methods of joinery to deliver top quality products at very competitive prices.

OUR SERVICES INCLUDE:

Box sash windows

Conservatories

Doors

Porches

Sliding bi-folding doors

Staircases

Conservation joinery

Architectural joinery

... and much more

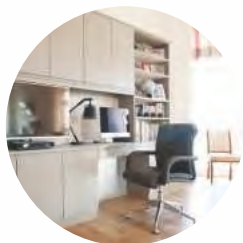
01227 752153



Visit our website
www.custommade-joinery.co.uk



CURTAINS, BLINDS, SHUTTERS, AWNINGS & WALLPAPERS



Hillside Interiors

Made to measure fitted furniture offering creative storage solutions in contemporary and classical styles



– interiors style studio –

Lenleys Interior Design Service provides a personalised service to create detail driven, luxury interiors that perfectly suit any home



Umbmaster Kitchens

See the latest in kitchen design. We offer a free measure and design service by our specialist installation team.

CARPETS, RUGS, VINYL & WOOD FLOORING





For an exceptional home



01227 766655 | [lenleys.co.uk](https://www.lenleys.co.uk)

Visit us at Roper Road, Canterbury CT2 7EL

VISUAL ROARS

EMPORIUM

Furniture. Homeware. Gifts.



WHERE HOME IS YOUR MASTERPIECE

visualroarsinteriors.co.uk

Visual Roars Emporium, Johnsons Garden Centre, Whitstable CT5 3JD 01227 792030



Published by
CONSERVATION NEWS

Kent

www.cnkent.co.uk

Publisher
Dawn Long

Contributors
Susan Hubbard
Louise Tomlin
Louise Priestman, Purcell Architects

Editor/Sales Manager
Dawn Long
Tel: 07725 732535
dawn@cnkent.co.uk

Design
Lynn Fasulo
Dandelion Design & Marketing
Tel: 07961 740943

Front cover photo
© Dawn Long
with thanks to Chic et Antique

Photo opposite
VV Rouleaux

© Conservation News
(Kent) 2018



If you receive your copy of Conservation News by Royal Mail and wish to opt out of our mailing, please send an email to: dawn@cnkent.co.uk

All rights reserved. Reproduction of any part of this magazine is not permitted without written permission of the publisher. The publisher accepts no responsibility of any loss or damage in respect of any product or service that may be advertised.

Printed in the UK by Pensord

Welcome

WINTER 2018

If you've not ordered your turkey yet, do read our article about impressive young farmer Sam Figgis, who really cares about his birds... and if you still need a tin to cook it in, pop along to Copperfields in Whitstable for all the kitchenware, tableware and Christmas decorations you need.

Winter's not only about Christmas, though, and it's a good time to plan other projects. We have good advice about kitchen worktops, and fascinating facts about stonework from specialists Chilstone. There's inspiration, too, from up-cycler Jay Blades, star of TV shows Money for Nothing and The Repair Shop; and great ideas from imaginative Eve Ranger, who has transformed her seaside home.

If that all sounds too much like hard work, put your feet up and just enjoy our feature on restoration work at a 13th century church near Sittingbourne.

Congratulations to our competition winner from the Autumn issue. Elizabeth McClaren from Chart Sutton, Maidstone won a copy of The Orchard Cook book by Stuart Ovenden.

Have a happy Christmas and new year.

Dawn





Copperfields

OF WHITSTABLE

Cookshop & Homewares Since 1956

Inspiration for your kitchen and home



Cookware • Homeware • Gifts • Bakeware • Furniture • Electrical • Cards

shop@copperfieldsofwhitstable.co.uk • www.copperfieldsofwhitstable.co.uk

93 - 95 High Street • Whitstable • Kent • CT5 1AY • Tel: 01227 273519

OPEN 7 DAYS A WEEK



© Jay & Co

What's inside

WINTER 2018

- | | |
|--|---|
| <p>12 Gardening
Winter gardening</p> <p>20 Hidden gem
Architectural stone elements from Chilstone</p> <p>40 Beautiful mistakes
Louise Tomlin chats with TV's Jay Blades</p> <p>46 Heaven sent
Eve Ronger's beautiful seaside home</p> <p>54 Stylish surfaces
Choosing the right worktop</p> | <p>70 Saving Kent's heritage
Tunstall Church</p> <p>81 Top turkeys for Christmas
We meet poultry farmer Sam Figgis</p> <p>84 In Their Footsteps
Celebrating 25 years of baking at Jervaulx Abbey</p> <p>88 Kent Farmers' markets
Where to buy fresh seasonal produce</p> <p>90 Popping corks
Rowena Hawtin's visits Charles Palmer Vineyards</p> |
|--|---|



DRIVEWAYS & PATIOS LTD



BLOCK PAVING • DRIVEWAYS • DECKING • FENCING
PATIOS • TURFING • GARDEN CLEARANCE
BUILDING & MAINTENANCE WORK

LANDSCAPING SPECIALISTS

01227 749872 | 07770 964939

www.drivewayexperts.co.uk

MG CONTRACTS

Tel: 01424 892265 or 07831 643835

Working in Kent & Sussex areas



MG Contracts is a family business with 32 years experience in building tennis courts and sport areas. The company provides free surveys and quotations. All courts are constructed to high specifications and are supported with a long guarantee.



Resurfacing and construction of all-weather tennis courts

Please contact us for further information

Manchester Road, Ninfield, East Sussex TN33 9JX. Tel: 01424 892265 or 07831 643835
mgsc@btconnect.com • www.martingurrtenisurfaces.co.uk



Kent Surfacing Contractors is a small family-run business based in Challock. We pride ourselves in that most of our work is obtained by word of mouth via local customers.

Kent Surfacing Specialists

- Tarmac
- Patios
- Resin bound
- Dropped kerbs
- Driveways
- Artificial grass

All our work is carried out to the highest standards and examples of our work can be viewed at Stonecraft Paving Centre in Ashford.

Our insurance is the highest cover available, allowing us to construct dropped kerbs on public highways. We also hold all of the necessary qualifications required to carry out these works.

If you are looking for ideas or advice on a project you are considering, we are always happy to suggest or help with a design.

We offer a FREE survey and written no obligation quotation service.

www.kentsurfacingcontractors.co.uk

Tel: 01233 349 012



WINTER GARDENING

Once the dormant season is well and truly upon us, it's time to take stock of the year's successes and failures, and to get on with planning for next year. It's also time to enjoy displays of evergreens, winter flowers and attractive barks.

VISIT A NATIONAL TRUST GARDEN TO SEE THE SEASON'S HIGHLIGHTS



The first spots of colour start peeking through in winter. The garden at **Chartwell** is a feast for the eyes year-round. In the colder months, admire the winter border, wander through the orchard and circle the lakes. With wintry mists and frosty mornings, the garden and estate at **Ightham** is beautiful this time of year. **Sissinghurst** closes for conservation over winter, but the colder season is perfect for a quiet walk around the wider frosty estate. For more information visit nationaltrust.org.uk.

Welcome Jack Frost

A beautiful and necessary occurrence in the garden, Jack Frost transforms gardens into a glittery scene of ice and sleep while never being certain when the curtain will rise. One reason to refrain from cutting back perennials at season's end is to enjoy the architectural quality of their seedheads in winter, especially when rimmed with frost. Shown here are sea holly and spent blossoms of *Hydrangea paniculata*.



RAISE SOME RHUBARB

This popular pudding tastes even better when the stems are home-grown. Choose a bright frost-free winter weekend for planting. For success, prepare a planting hole in a well-drained spot and dig in plenty of well-rotted manure or compost. In their first year, plants should not be harvested or 'forced' - let the plants get established. Cover with a forcer in the second year to exclude light and encourage early April pickings.





PERFECT IN POTS

The intense blue flowers of *Iris reticulata* in February are a joy to behold. They will bloom whatever the weather in late winter providing a striking display varying from pale blue to deep violet, and standing at just 12cm tall, they're perfect for pots. Place containers in a sunny spot and ensure they are well drained. These hardy plants will appear every year, but with more vigour than the last.

A WINTER ESSENTIAL

Snowdrops are one of the first signs of life in gardens after the long winter months, flowering between January and March. They enjoy a well-drained soil and need good light when in active growth. Containers of snowdrops are lovely, especially near the house. However, being hungry and thirsty plants, they don't do well in pots long term. After planting, feed with a balanced fertiliser while they are growing, and divide clumps every few years. Also, remember to keep a note of where you've planted them, so you don't step on emerging flower shoots.



What to do now

- Help wildlife. Resist the urge to tidy up. Many creatures will be sheltering in leaf litter and the hollow stems of dead perennials.
- Clear leaves from paths and patios where they're a slippery hazard and mow up leaves smothering grass on the lawn on a dry day.
- If your garden feels bare of plants offering winter interest, buy some in: hellebores, skimmias, heucheras, euphorbias and evergreen grasses.
- Lift and store dahlia tubers once their leaves are blackened by frost.
- Check climbers are securely attached with plant ties to their supports.

FEED WILD BIRDS

It's hard to spot garden birds at leafier times of the year, but in winter we get a really good view of them as they pay our gardens a visit. Encourage them with hanging feeders or a bird table; position these where you can see them from the house.



WAREHAMS

Antique Garden Ornament — Gustavian Furniture

68 Oxford Street - Whitstable, CT5 1DG

Mobile : 07831 210139

www.warehams.com



Georgian Brickwork

**Specialists in
Conservation & Heritage Brickwork**

Skilful repairs to listed & period properties
using

traditional methods and materials

Charles: 07732 975 349

www.georgianbrickwork.co.uk



ANDREW WILTSHIER
GARDEN DESIGN

**FROM NEW PLANTING
SCHEMES TO FULL GARDEN
DESIGN PACKAGE**

ENJOY YOUR GARDEN

07818 064343

www.andrewwiltshier.com

BJ CESSPOOL SERVICES LTD



Tel 07796 282864 or 01233 624017

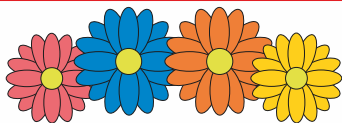
www.bjcesspool.co.uk

If you want someone who is reliable, careful and efficient to empty your cesspool, septic tank or treatment plant please call Barry or Fiona Spicer.

- Emergency blockages
- Septic tank clearance
- Cesspool maintenance
- Treatment plant maintenance

We can help you with your home, rental properties, caravan parks, hotels and in fact any property that is not on main drains.

A jetting service can also be provided.



Meadow Grange Nursery

Honey Hill, Blean, Nr Whitstable, Kent, CT5 3BP

Tel: 01227 471205

The largest selection of Christmas Trees in East Kent



Also a wide
choice of pot
plants and
wreaths



Opening times: Mon – Sat: 8.30 am – 6.00 pm
Sun: 10.00 am – 4.00 pm

www.meadowgrangenursery.co.uk



AWARD WINNING BLOCK PAVING AND RESIN DRIVEWAYS

Drives, Patios and Paths

0% DEPOSIT - PAYMENT ON COMPLETION

BLOCK PAVING - CONCRETE - TARMAC - SHINGLE
PATIOS - SLABBING - CRAZY PAVING - FENCING
NATURAL STONE - BRICKWORK - TURF & TOPSOIL
ARTIFICIAL GRASS - RESIN BOUND

01227 500237 Mob: 07731 316879

www.lifetimedriveways.co.uk



Marshalls
Creating Better Landscapes



SPROUTS HONOUR

BRUSSELS SPROUTS GOT A BAD REPUTATION AS THE VEGGIE KIDS LOVE TO HATE, BUT MANY OF US HAVE REALISED (AS ADULTS) THAT THIS VEGETABLE IS INCREDIBLY DELICIOUS. IT'S ALSO BRIMMING WITH VITAMIN C AND FIBRE, SO IT HAS A TONNE OF HEALTHFUL PROPERTIES.

Once universally, and in some cases justifiably, despised, Brussels sprouts are finally getting their due, and if you love sprouts as much as we do, you may even fancy trying to grow your own next year. Yes, they take up a bit of space in the veg plot, but apart from that they're really not a very demanding crop. The advantage of growing your own is that by carefully choosing your varieties, you can spread the sprout love from autumn until early spring.

The other advantage of growing your own is that you get to enjoy the sprout tops, too – that is, the sheltering crown of foliage at the top of the plant. Sprout tops make pretty good cut-and-come-again greens provided you take just a few at a time during the growing season. Their taste is something between cabbage and Brussels sprouts, and they're very tasty shredded and either tossed in butter or added to stews, rather as you would with the posher, more glamorous cavalo nero.

Brussels sprouts are thought to have acquired their name due to the fact they were first grown commercially in Belgium, where they were a favourite winter vegetable. Having

proved a hit, the plant made its way across Europe and has become an established sight on many British plots.

As with other brassicas, such as cabbage and broccoli, Brussels sprouts need a firm soil that is not acidic. Most plots are well-suited to this requirement, and even those that are less than ideal can be treated to bring them up to scratch.

BRUSSELS SPROUTS VARIETIES

Standard varieties, such as Bedford Fillbasket (early cropping) will produce a bumper crop of large sprouts that can be picked over many weeks. More modern F1 hybrid varieties tend to mature all at one time, meaning you have to pick them more-or-less in one go.

For an early crop before Christmas, try Maximus or Breeze. For a late maturing variety, try Wellington. Trafalgar is said to be great for a child-friendly taste as the sprouts are sweeter and less bitter.

For something a bit different, try Red Bull or Rubine, which produce attractive purple-red buttons that retain their colour when steamed and also have a mild flavour.

Winter vegetables

- GROW YOUR OWN -





UNIQUE OUTDOOR LIGHTING

Stone Globe Lights are striking garden lights, powered by LED. By day they sit in your outdoor space as traditional, decorative globes, and by night, they emit a glow that lightens your garden, driveway, patio or decked areas. Ideal for pillars, gateposts and for lining driveways and paths.



'STONE' GLOBE LIGHTS

www.stoneglobelights.co.uk

Tel: 01638 577745



Get a wonderful lawn with a GreenThumb Makeover and save the hassle and cost of re-turfing.

Our Lawn Makeover is ideal for:

- Anyone who wants the best lawn - ever
- Worn-out lawns, maybe decades old
- Lawns with very little grass – almost all moss & weeds
- New-build homes or properties with poor quality turf

For your free Lawn Makeover analysis, call GreenThumb on 01227 652351.

Visit our website for further details.

GreenThumb
LAWN TREATMENT SERVICE



Wednesday
Open
9am - 9pm
with an
evening menu



Preston Garden Centre

The Street, Preston

Nr Wingham, Canterbury CT3 1ED

www.prestongardencentre.co.uk

Tel 01227 722250

COPPERS BISTRO

- Serving breakfast until 11.30am
- Hot food served until 4pm
(3pm on Sundays)
- Closed from 24th Dec - 3rd Jan
- Full breakfast and Sunday roast

OPEN EVERY DAY

- Large trees and shrubs
- Hedging and screening
- Christmas trees for sale
(from 24th November)
- Wheelchair-friendly
- Free wifi



HIDDEN GEM

THERE IS A GEM NESTLING IN PICTURESQUE GROUNDS JUST OUTSIDE LANGTON GREEN IN KENT. UNLESS YOU HAD PREVIOUSLY SOUGHT OUT A COMPANY THAT CREATES BEAUTIFUL HANDMADE STONE GARDEN ORNAMENTS, FOUNTAINS AND ARCHITECTURAL ELEMENTS, THEN YOU MAY NOT EVEN KNOW THEY EXIST.

- by Louise Tomlin -





Welcome to Chilstone, the home of cast stone. For those of you who are uninitiated in the wonders of cast stone, let me give you a quick introduction to this very versatile and clever material. Back in 1953 the founder of Chilstone; Michael Dibben wanted to find a substance that resembled natural antique stone as closely as possible. After extensive research he found cast stone, which can be crafted or moulded into virtually any shape or size, which makes it perfect for garden ornaments, bespoke stonework and architectural restoration projects. This material closely resembles natural stone, what's more it weathers wonderfully taking on an antiqued patina that blends beautifully with any stonework in its surroundings.

The special process of hand making all of Chilstone's pieces, both large and small, is carried out in the workshops on site by a team of dedicated craftspeople. They use their skills and attention to detail to create elegant pieces, some

The beautiful Kew fountain from Chilstone

of which grace many well-known and prestigious properties, such as Kensington Palace, Hever Castle, Kew Gardens and the Longleat Estate. Chilstone exports worldwide with customers in the USA, Asia and throughout Europe.

There's no doubt that the elegant ornaments and decorative pieces that Chilstone produce are bound to appeal to all types of customer from the residential gardener to garden designers alike – interesting to note that Chilstone's products have featured in many award-winning show gardens at RHS Chelsea and Hampton Court flower shows – and they are set to yet again in 2019. And there's so much more they offer, there's the whole arena of bespoke architectural services they provide to architects, builders, developers, landscapers and the general public.

Chilstone can restore original features like statues and fountains, but also window and door surrounds, sills, cornices, columns or other

stone features. An interesting example is a house refurbishment project in a street that was mainly made up of Victorian properties, the owners wanted to match the other houses, but sadly their house's portico had been removed at some point in the past. Chilstone was able to provide a stone portico within keeping of the history of the house and matching the others in the street.

They can do this by supplying from their existing stone product range or by taking a mould from neighbouring properties. This works for almost any stone feature like coping, balustrades and sills. It's well worth pointing out that damaged or eroded stonework can be replicated more cost effectively than carved stone. The fine texture is perfect for detailing and engraving, and they have excellent colour matching capabilities along with optional stainless steel reinforcements when components are load bearing.



Kensington Palace gardens



Above: Ballustrading at Hever Castle



Left: Bespoke cornices are used to define porticos, window surrounds, pediments and other decorative features

Not every Chilstone product is installed as a result of restoration, they are frequently being utilised in new builds. Some developers incorporate Chilstone's range of architectural elements to give a more classical appearance, with features that will weather well. Likewise extensions to period properties can be helped to blend more easily with the original building by replicating features, so the new parts complement the old.

If you would like to know more about Chilstone, please see www.chilstone.com or visit their show garden where you can enjoy the beautifully landscaped grounds and see their wonderful work in person.

K **Cleal's**
Upholstery
**Now with over
54 years experience**



Why replace your furniture when I can:
Repair and recover your dining chairs
Carry out any re-upholstery and recovering in a wide range of fabrics
Renew old cushions - Replace rubber webbing - Renew old springs
Cane seating - Caravan and boat cushions

- Domestic
- Contract
- Antique
- Modern



21 Oakwood Drive, Whitstable
Kent CT5 1NY
Tel/Fax: 01227 273811
Email: juliecleal@hotmail.co.uk

SOUTHGATE ELECTRICAL CO. LTD
The Best Electrical Services

*Offering a full range of electrical services
from design to installation*



- External Electrics
- Access and Security
- Electric Showers
- New Builds
- Space Heating
- Fire Alarms
- Landlord Certificates

T: 01227 712790 / 07889 895394
www.electricians-canterbury.com




GRANVILLE HOUSE ANTIQUE CENTRE

Granville House, 49 The Mall, Faversham ME13 8JW

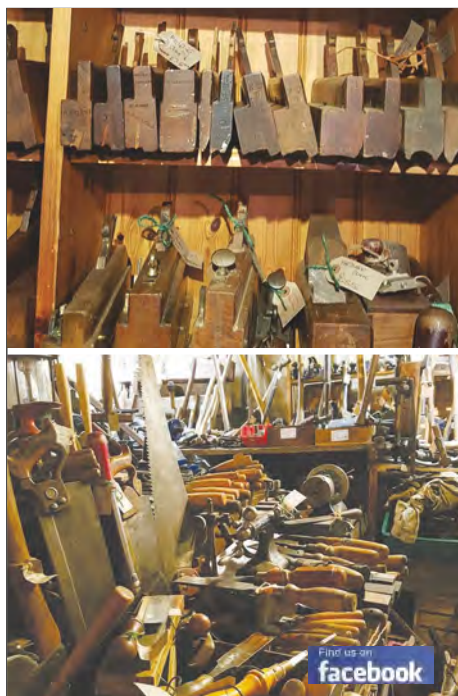


- Vintage and antique jewellery
- Investment porcelain
- Exclusive antique furniture
- 18th & 19th century table glass and ceramics
- ... and much more

BUY OR SELL IN COMFORT

Open Tue - Sat, 10am - 5pm; Sun 10.30am - 3.30pm
FREE valuations Friday & Saturday 9.30am - 12 noon

Tel: 01795 534093 www.m-g-antiques.eu



Old English Tools

BOUGHT AND SOLD



Bench planes, chisels, axes, bill hooks, froes,
draw shaves, side axes, early garden tools,
blacksmith tools and carpenter's tool chests.

Cast iron log burners and fire grates.

Tools old and new bought for cash.

Workshops - sheds - farm buildings cleared.

OPEN 6 DAYS A WEEK

Standard Quay, Faversham ME13 7BS

Call Phil on 07796 343722 or 01622 884574

Find us on
facebook

GAROLLA
ROLLER
SHUTTER
DOORS



Great for:
Space Saving
Kerb Appeal
Ease of Use

THERMALLY INSULATED ELECTRIC GARAGE DOORS!



GAROLLA can save a lot of space inside your garage. Rolls up vertically into a box. Takes only 8 inches of headroom! Opens vertically so you can park up close to the door. Remotely open/close the garage even from inside your car.

Acoustic & Thermal Insulation

Brush Sealed Rails & Thermal Insulation

No Deposit, Pay on Completion

18 Colours Available



FREE DISPOSAL OF OLD DOOR!

**SAVE
£459!**

LIMITED OFFER - was £1354

NOW ONLY £895 Inc. vat, Full Fitting!

MADE TO MEASURE, CALL US TODAY!

01233 690 476 07537 149 128

Phone Lines Open 7 Days a Week

(offer valid for openings up to 2.6m wide & inc 2 remote keys, 55min white door, internal manual override)

**CACTUS
SECURITY**
& ELECTRICAL



We provide a range of alarms for domestic use to keep your premises secure. Our alarms include wireless solutions which can be monitored 24/7, giving you the assurance of security in your business premises or home.



DAITEM



**01227
365 000**

info@cactussecurity.co.uk

www.cactussecurity.co.uk

PO Box 259 • Herne Bay • Kent • CT6 9AS



EAST KENT TIMBER LTD
TIMBER MERCHANTS

- Softwoods
- Hardwoods
- Sheet Materials
- Decking
- Machined to your design



Contact us on

T: 01227 738838

E: sales@eastkenttimber.co.uk

W: www.eastkenttimber.co.uk

Create a COSY LIVING ROOM

A COMFY, INVITING LIVING ROOM IS THE PERFECT HAVEN FOR CHILLY WINTER NIGHTS. CREATE YOUR OWN SEASONAL RETREAT WITH COSY MATERIALS, TACTILE ACCESSORIES AND RICH, WARM COLOURS.

As the nights draw in and the weather turns cold, there's nowhere in the house that can bring quite as much pleasure as a warm, comfortable living room. In order to create a cosy atmosphere you need to conjure up a sense of warmth.

A warm colour palette, woolly blankets, thick pile rugs, fluffy throws and soft lighting are the staples of a cosy living room and the perfect accessories to create a space to escape to from the cold and frosty weather this winter.

The colour scheme is the key; darker, warmer tones and sumptuous fabrics will bring the room in, making it appear cosier. Traditional patterns made from heavier-weight fabrics such as tartan and check feature heavily in winter décor styling guides year after year.

Incorporating tactile textures imparts a sense of warmth; cushions, rugs, and throws will all make a room feel instantly cosy. Soft blankets and fluffy throws are wonderful to snuggle up in during the colder months.

FURNITURE ARRANGEMENTS

There's nothing less cosy than a room that feels too formal. The best living rooms are defined by the activities you do in them – so start considering how you can make your living room personalised. First, establish a focal point, then divide the room into sections – creating areas with different

functions to make that room feel cosier. Once you've decided on a space, think about where to put the rest of your furniture. Aim for flowing lines with circular layouts – pull pieces of furniture forward around your focal point.

COMFORT UNDER FOOT

Hardwood and tiled floors have become increasingly popular in recent years and, whilst attractive and practical they can make your home feel cold during the winter months. Introducing rugs provides a barrier, reducing draughts, adding warmth and if placed by armchairs and sofas they will ensure you never have to put your feet onto a cold floor. Rich deep colours and thick pile will accentuate your winter look.

The beauty of rugs is that they're available in so many different colours, textures, shapes and designs that you can always find the perfect one for your living room. Rugs often look great in the shop, but sizing, colour and lighting can affect just how it looks once it's put down in your living room.

REFLECT ON THE ROOM'S CHARACTER

The best cosy spaces have a level of comfort, informality and warmth – in both a decorative and a literal sense. But a crackling fire and a





All items from Neptune

comfortable sofa are only part of the story. The cosiest of sitting rooms must also have character, much of which is derived from the objects that fill the surfaces and cover the walls. An abundance of empty wall space can make a room feel cold – avoid this by giving your walls a lick of paint – consider dark warm colours. You could even fill up the wall space with some sort of storage that holds your favourite collections, or maybe hang some old antique paintings that you'd love to show off.

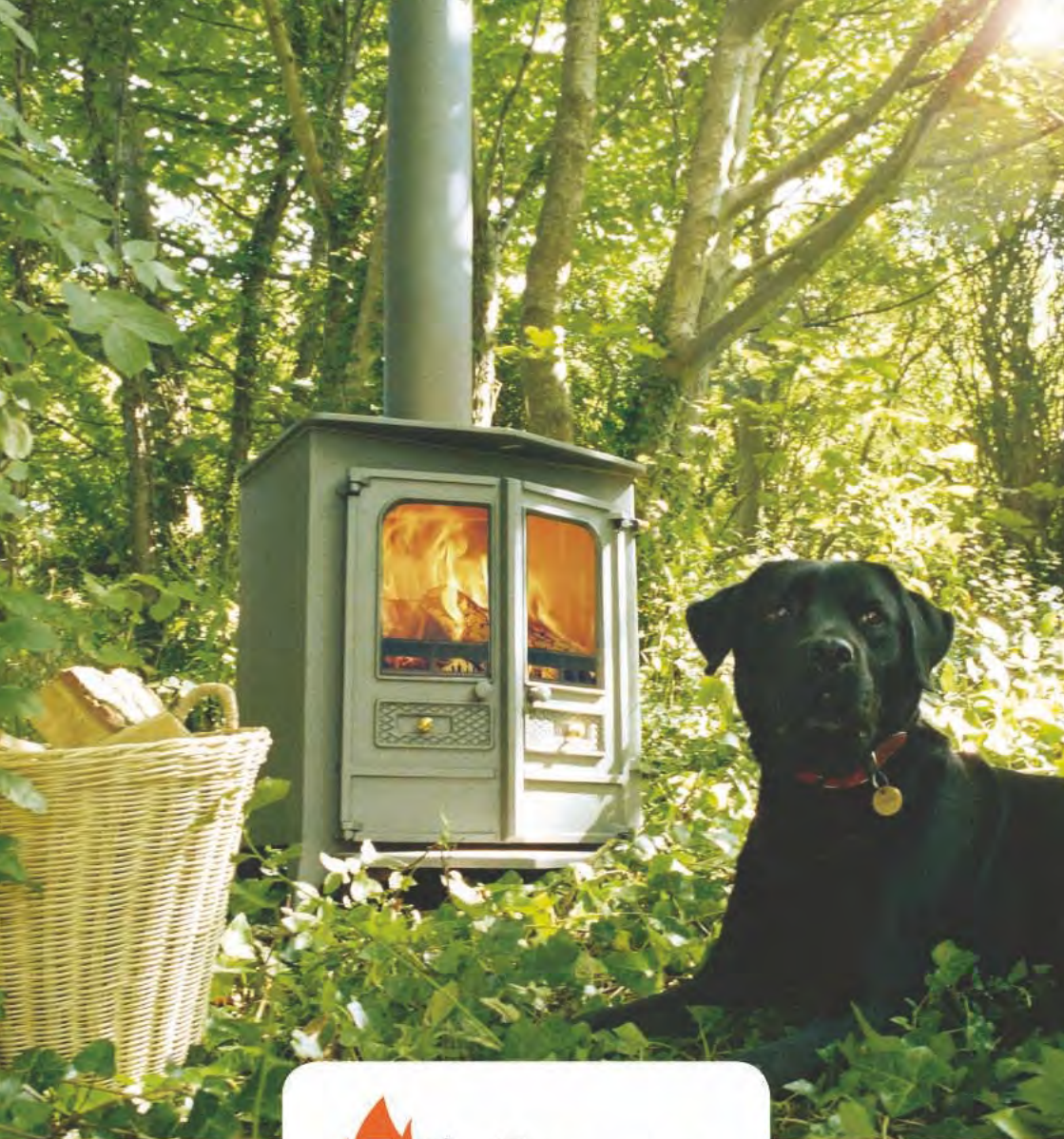
A WARMING ACCESSORY

Radiators are an absolute necessity for warmth and comfort within the home. Designer radiators allow you to have a functional item which provides warmth whilst improving the appearance of your living room. If your home has more of a period feel, choose a traditional or reclaimed radiator rather than having the

unattractive, conventional white radiator hindering the appearance of your living room.

A BURNING CENTREPIECE

Fireplaces are essential for living rooms, from contemporary designs to traditional wood-burning fires; they're the ultimate centrepiece. A fire or log burner will create a low-level glow and instantly add warmth. This can be added to or replicated with decorative lanterns and candles clustered together and arranged in an assortment of heights, adding an intimate and homely touch. Place tea lights around the bottom of the fireplace when entertaining to create a romantic and calming atmosphere. Making your living room cosy for the winter can really help you to appreciate it more. Once you've decorated for the winter, you can relax and put your feet up in the cosiest room of the house.



STOVES AND CHIMNEYS

Open Thurs - Fri - Sat 11 - 5 or by prior appointment

www.ablazestoves.co.uk

The Courtyard, Mersham-Le-Hatch, Hythe Road, Ashford, Kent TN25 6NH

Tel: 01233 512323 Mobile: 07767 771100 ablazestoves@hotmail.co.uk



Chic et Antique



81 Central Parade, Herne Bay CT6 5JQ
 Eve 01227 637474
 or 07714 957974



Old English Pine



Established over 30 years, the store is spread over three floors. You will be amazed at the choice. We also stock a wide range of beautiful reasonably priced accessories to make your house a home.

Find the perfect gift for friends and family

100/102 & 90 Sandgate High St, Sandgate,
 Folkestone CT20 3BY Tel: 01303 248560
www.oldenglishpineinkent.co.uk

LUKEHURST

FURNITURE BEDS CARPETS CURTAINS

lukehurst.co.uk



THE COMPLETE HOME FURNISHERS
IN SITTINGBOURNE & RAINHAM

www.lukehurst.co.uk

Wide range of living, dining and bedroom furniture

Many major brands

Curtains and carpets

Styles to suit all tastes and styles of interior

All at value for money prices

Visit our stores and quote #CNK or take this advert to receive up to £100 discount*

*Terms and conditions apply



Sofa and cushions from John Lewis

The subtle art of **DRESSING A SOFA**

TEXTILE DESIGNER NICOLA JAMES FROM JOHN LEWIS GIVES HER
ADVICE ON ACCESSORISING THE LIVING ROOM HERO

THINK FASHIONABLY

Cushions provide “endless possibilities for how you can put a collection together on your sofa” says Nicola. If that sounds somewhat fashion-centric, then you’re right: it’s not unusual for the catwalks to influence interiors and, just as you can switch your outfits from day to day, the concept is the same when it comes to the interchangeable aspect of your sofa.

“You can be so varied,” Nicola continues, “from pared back and sophisticated to really eclectic. it’s

a way of putting your personality on the sofa.”

START WITH SUBTLE OVER SAFE

Unsure what your interior’s ‘personality’ is? Take a gradual approach. “If you’re not that confident with colour and your sofa is a muted shade of grey, then think about a mix of darker and lighter neutrals,” advises Nicola. That means all manner of shades from charcoal to oyster and, unexpectedly, pink. “We’ve seen a big resurgence in pinks, it’s almost like a new neutral”, explains Nicola. And not only does pink look arresting



All items available from John Lewis

with grey, it's also perfect when paired with navy blue.

THE MORE THE MERRIER

As a nation, we're embracing colour and pattern, and this ties in with a return to maximalism where decor trends are concerned. "We're focusing on rich blues and greens," reveals Nicola, "which you can mix in with warmer neutrals and softer tones and then inject some exciting bright pinks and oranges."

When it comes to clashing prints and patterns, the best news is that "there aren't any rules," says Nicola. "It's about mixing styles." So geometric patterns and floral prints are go, as are ditsy motifs and abstract drawings, all together on one big comfortable canvas.

THINK TEXTURE

In the way that a piece of clothing might appeal to you because of its composition or tactility, the same applies to soft furnishings. Brocades,

embroidery, weaves – they all play a part in creating interest and adding diversity to our surroundings.

Velvet, for example, is a hero fabric because of its softness and the way it absorbs light, making the same panel of fabric appear in many different ways depending on placement or time of day. Heavier fabrics like wool are becoming more prevalent and contrast well against cotton upholstery. A build-up of textured layers is a surefire way to make your sofa or armchair appear inviting and cosy.

AND DON'T FORGET A THROW...

Throws are back. They're simultaneously versatile, practical and virtually foolproof when it comes to making a style statement. A cashmere version will endure and keep you warm for many winters while also promising not to bobble and itch. Choose a chunkier knit to make more of an impact when draped across the top of your sofa.



Dee-lightful

CLEANING AND
ORGANISATION
SPECIALIST



Dee-Lightful cleaning is a professional home organisation and cleaning company serving the Kent area, specialising in de-cluttering, organising, cleaning and unpacking.

We will help you feel a new sense of clarity with your belongings, along with maintaining a steady functional lifestyle.

For more information please contact our friendly team

TEL: 01233 740875

MOB: 07559 551527

EMAIL: Dee@dee-lightfulcleaning.co.uk



WHITSTABLE STOVE SHOP

2 SADDLETON ROAD

CT5 4JB TEL: 01227 266209

WHITSTABLESTOVESHOP.CO.UK

LOG BURNING, MULTI-FUEL AND PELLET STOVES,
CAMP COOKING AND AL FRESCO DINING.



Derek Hall interiors

Creating a home for you



Derek Hall Interiors offer a personal and quality service, creating elegant & stylish interiors for your home. Contemporary or traditional, coastal or country, we can help you achieve your vision. We can supply a variety of bespoke window treatments, fabrics and wallpapers from well known brands. Consultations are available to help you decide on colour schemes and design detailing.

Tel: 07905 020253 www.derekhallinteriors.com

IS YOUR HOME WINTER READY?

YOU MAY HAVE SORTED YOUR WINTER WARDROBE, BUT HOW READY IS YOUR HOME? OUR HOME CHECK WILL GUARANTEE YOUR PROPERTY WITHSTANDS THE BIG CHILL.



1 SORT OUT YOUR HOME INSURANCE

Check to make sure that your home insurance policy is up to scratch and that you're covered for winter-related damage. If it comes to sorting out water damage to your Christmas presents or fixing a leaky roof, you'll be glad you had the right cover in place.

2 GET YOUR BOILER LOOKED AT BY AN ENGINEER

A poorly maintained boiler wastes more energy and costs more, and it also runs the risk of leaking carbon monoxide. Either get your boiler serviced before winter or change your old model for a condensing unit, which could shave off around £235 a year (according to the Energy Saving Trust).

3 KEEP YOUR PIPES TOASTY

Burst pipes are common during winter due to rapid freezing and thawing, potentially causing massive damage. The best way to stop this from happening is to keep your pipes warm with their own foam cardigan (called lagging), which will reduce the heat loss and insulate the pipes to stop them from freezing. It's a simple trick that can be done easily and fairly cheaply at home yourself.





4 CLEAR YOUR GUTTERS

It's important to clear your guttering regularly but if you only clear it once, it has to be ready for winter. As autumn fades away, you can be assured that leaves and twigs will have collected in your gutters causing a nasty build-up. With heavy rain or snowfall, this can lead to exterior water damage and even a leaky roof. Seek a local professional to help if you have particularly high or blocked guttering. Plus, any cracks or breaks can be identified at the same time, giving you much-needed peace of mind during freezing temperatures.

INSULATION IS MORE THAN JUST A WOOLLY JUMPER

5 About a quarter of the heat in your house is lost through the roof, so having good loft and wall cavity insulation will keep the house warm with less energy used. These improvements needn't cost the earth, as there are a number of government grants and schemes that subsidise insulation installation.

6 ROOF MAINTENANCE

Your roof acts as a shield during winter, so making sure it can withstand the turbulent weather ahead is paramount. It's recommended that you check both the exterior and interior structure at least once a year to identify any weak spots such as leaks, old or worn insulation, debris and loose tiles. Pay special attention to vents, skylights and chimneys.

7 OUTDOOR SAFETY

Snow, ice and freezing temperatures can wreak havoc on your outdoor space, especially if you have a driveway. Outdoor maintenance is not only being safety conscious, helping to reduce the risks of trips or falls, but also prolongs the use of your drive.

8 FIRE RISK

Whether you have the luxury of an open fire or the convenience of an electric or gas powered one, fire safety is extremely important. Remember to check your smoke alarms.



Wingham
Woodburning Stoves



*Come & see us at our showroom
or visit our website*

A family-owned business with traditional values at heart and proven excellence with the installation of woodburning & multifuel appliances and chimney systems.



"Today we had our multifuel burner fitted...Super guys...Great job and fantastic service from Rob and his Dad Bill. Fitter was extremely meticulous and respectful of our home...worth every penny!"

Little Crockshard Farm Shop, Crockshard Lane, Wingham, Nr Canterbury.
CT3 1NYT Tel: 01227 728130 www.winghamwoodburningstoves.co.uk



WINTER WARMERS



WINGHAM WOODBURNING STOVES IS A FAMILY RUN BUSINESS
BASED IN AN OLD CONVERTED FARM SHOP JUST OUTSIDE OF WINGHAM

We source products based purely on quality and aesthetics to ensure you get the product and service you deserve, hand selecting the best stoves and components on the market such as flue systems and cowl.

We can organise every aspect of your installation, from start to finish from the installation of wood-burning and multifuel appliances to chimney lining and fireplace restoration. We have a strong working relationship with a local family-run stonemason, who offers a superb range of stone hearths. We also work closely with a company based on the Isle of Wight who hand-produce enamel heat shields and hearths. Not only are they a beautiful, bespoke touch to your home; they come in a range of colours to complement your decor.

We also work with a number of suppliers of wooden beams, surrounds and trims all which can be ordered to your exact requirements. Our network of tradesmen can provide services such as building, scaffolding, gas disconnects, plumbing plastering and electrical work. We pride ourselves on our attention to detail, which is coupled with our understanding of the needs of our customers. We offer free advice and valuations that are followed by a written quotation. Come and visit our newly refurbished showroom or give us a call for a friendly chat.

*** Wingham Woodburning Stoves,
Little Crockshard Farm Shop, Crockshard Lane,
Wingham, nr Canterbury CT3 1NY
Tel: 01227 728130
winghamwoodburningstoves.co.uk**



© Jay & Co



© Jay & Co



© Jay & Co

BEAUTIFUL MISTAKES...

LOUISE TOMLIN CHATS WITH THE MAN WHO RESCUES THINGS THAT HAVE BEEN DISCARDED BY SOCIETY AND WITH SKILL, CARE AND ATTENTION, THEY BECOME TREASURED AGAIN – IT'S A FORMULA THAT CAN APPLY NOT ONLY TO BROKEN CHAIRS BUT TO DISADVANTAGED PEOPLE TOO!

One of the best TV shows around in recent years, in my humble opinion, has to be the Repair Shop. It's what I call 'gentle telly' and is thoroughly good for the soul. It's been described as an antidote to today's throwaway culture, which sums it up beautifully. This televisual masterpiece, where experts revive all manner of distressed, damaged and timeworn antiques, revolves around returning them to their former glory. The fascinating process of how these items are lovingly given a new lease of life and the lengths the very talented experts will go to, is part of what makes this show highly addictive viewing, as are the touching tales that are the back story of why the piece is so important to the owners. The reveal, when the cherished piece is reunited with the owner, has the feel-good factor going off the scale in most instances. Very satisfying.

One of the mainstays of this great program is Jay Blades, an unassuming man who pours his heart and soul into the restoration of treasured heirlooms, who in the last few years has brought his considerable renovation skills and unique brand of quirky creativity into this and



also another TV hit, *Money for Nothing*.

These are skills that Jay has honed over the years. He says he is mainly self-taught but was incredibly lucky to have had the guidance of some masters of the art of restoration who have been his mentors. Originally from Hackney, he left school at 15 with no qualifications and experienced hard times, but eventually managed to get back on track studying for a degree in criminology and philosophy at Buckingham University.



Having built up his expertise in ‘up-cycling’ and furniture restoration, he now has his own business, Jay & Co. He carries out private commissions and regularly visits local auctions and charity shops looking for items to transform into highly sought after designer gems. Jay has developed his own individual style, employing exciting colours and rich fabrics. Picking out a single leg, seam or button in a stray colour is his signature. This distinguishing quirk came about when he made what he calls a ‘beautiful mistake’ by using an unintended colour on a restoration job. Instead of correcting the mistake he recognised that it added a zing or accent that brought the piece to life, this has become something of a trademark in the work of Jay & Co. Clearly his restoration work is very much in demand, as are his TV presenting skills, having multiple series of both *Money for Nothing* and *The Repair Shop* under



his belt. He’s also been a contestant on *Celebrity Masterchef* this year and has scooped an award in the Screen Nation Media Awards.

Giving something back to society is vitally important to this ‘humble restorer of furniture’ as he refers to himself – having had his fair share of hard times where if it hadn’t been for the help of other people, he would have been

out on the street, Jay has in turn helped steer disadvantaged young people away from crime, by enabling them to learn the skills to make a living restoring furniture or other items, rather than turning to what so often is seen as the alternative, drug dealing or other criminal activities.

He was the co-founder of an award-winning social enterprise scheme called Out of the Dark and has spent many years working with community programs like Street Dreams, passing on his skills and teaching young people to become resourceful and to think outside the box.

His up-cycling ethos - making something

that has been thrown out by society into something valuable, is an integral part of Jay's philosophy in his work with people and with furniture. The parallels are there and this sensitive, creative guy is incredibly sincere in his need to restore a balance to society, where he says we shouldn't be afraid of failure, by

“Jay has developed his own individual style, employing exciting colours and rich fabrics.”

understanding what went wrong and learning lessons this can hopefully steer us away from failing again.

We could do with more inspiring people in the world like Jay Blades to

help us see the hidden values of people and objects that are sometimes just under the surface – perhaps we just have to look a little closer?



© Jay & Co

You can find out more about Jay Blades and his work at jayand.co

Gary Miller

PAINTER & DECORATOR



30 years experience specialising in period & country properties across Kent. References available.

24 High Dewar Road, Rainham ME8 8DN

Tel: 01634 235773 or 07971 871433

garymillerdecorator@gmail.com

**WANTING A CREATIVE OUTLET?
LOVE REVIVING BEAUTIFUL
FURNITURE?**

We are excited to announce
the launch of our **traditional
upholstery** course

07999 604250

www.wellsandwhite.co.uk

wellsandwhite@outlook.com

Wells & White
Bespoke Upholstery



15th January '19



THE



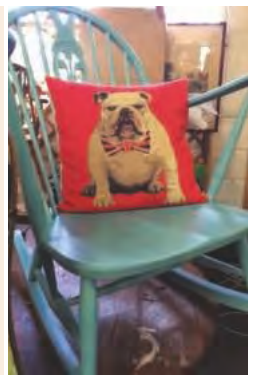
BARN

The Antiques Barn BETHERSDEN

Over 3,000 sq ft of the stuff you didn't know you wanted!!!

As well as the stuff you do!

Open 7 days a week 10.00 - 4.30.



Greenway's Garden Centre, Ashford Road, Bethersden, Ashford, TN26 3LF



Telephone: 07708759581

WE PROVIDE A FULL OR PARTIAL HOUSE CLEARANCE SERVICE



*Wishing our
customers
a Merry
Christmas
and a Happy
New Year*



CGS BLINDS & SHUTTERS LTD

Come and visit our new showroom

• Huge choice • FREE quotations

Tel: 01227 278643

146 Tankerton Road, Whistable CT5 2AW

www.cgsblinds.co.uk



Find us on Facebook





HEAVEN SENT

EVE RANGER USED HER CREATIVE FLAIR TO BRING A TIRED-LOOKING SEASIDE HOUSE BACK TO LIFE WITH A WEALTH OF PRETTY PASTELS AND MUTED FLORALS

Eve Ranger loved Heavenly Cottage, the 300-year-old home she had carefully refurbished and lived in for 16 years, and she and husband Andy never expected to move out.

But she hankered after a sea view, so when a tired-looking house slap-bang on Herne Bay seafront came on the market she knew she had to have it, and it seemed the house was meant

to be hers (heaven-sent maybe) when the cottage at Beltinge sold within 24 hours.

That was two years ago, and already the house – renamed *Heavenly View* – has been transformed. A rear extension has made an airy, pleasant kitchen on the ground floor and a large front-facing master bedroom above with a wonderfully spacious connecting bathroom. It's designed so that, while in privacy at the back of



The open-plan kitchen diner with its painted furniture; smoked and limed oak flooring and neutral palette creates a restful feel.

the house, bathers can enjoy an uninterrupted sea view through the bedroom.

There was much disruption during those two years. Damp walls needed to be injected and re-plastered; upstairs ceilings were raised. Work was held up when a 36-foot well was discovered



exactly where an extension post was due to be placed.

Eve and Andy came up with a bold solution to living in the chaos: they built a lodge at the back of the garden to live in away from the mess.

“This house was quite boring and needed character. “Furniture and interiors are what I love.”



Despite the work involved Eve and Andy could see the property's potential and after two years of building work Eve's vision has been turned into a reality.

The uninterrupted sea views are what first drew Eve to the dilapidated property.





In the main house, flooring has been replaced throughout, with smoked and limed oak downstairs which Eve says took a year to source. She imaginatively did much of the refurbishment herself, hand-painting furniture and styling rooms in a beautiful French palette of muted colours with dashes of light and brilliance.

“What makes this house a home is that it’s light and bright, yet every room is comfortable and welcoming.”



“This house was quite boring and needed character,” she says. “Furniture and interiors are what I love.” Eve continues “What makes this house a home is that it’s light and bright, yet every room is comfortable and welcoming.”

While living at the cottage she has unleashed a talent for this type of work which then built into a business, advising friends and family then opening a shop in Herne Bay called Heart and Soul offering shabby chic furniture and accessories as well as clothes and jewellery.

Eve is due to open a second shop on Herne Bay seafront called Chic to Antique, where the emphasis will be very much on interiors. “I love being creative – it’s just in me,” she says. “I have the vision and am happy to offer a consultation service to others.”



APPLEBY GRANGE
KITCHENS

- ❖ design
- ❖ build
- ❖ refurbishment

applebygrangekitchens.co.uk

bespoke, hand
painted kitchens

Based in Canterbury,
Appleby Grange offer
a unique kitchen design
& build service.

07779 809 229

STYLISH SURFACES

THE WORKHORSES OF ANY KITCHEN, WORKTOPS NEED TO BE TOUGH AND PRACTICAL TO USE, AS WELL AS STYLISH

While cabinetry may be the main style decision you make for your kitchen, never underestimate the impact your worktop choice will have on the overall scheme. It's important to give it due consideration and not to view it as an afterthought.



www.tomhowley.co.uk

Here's what you should consider before you invest in a countertop.

YOUR BUDGET

Worktops are available at a variety of price points – from cheaper laminates to expensive granites. Cheaper options can be a good idea but may not last as long as more durable stones or composites.

YOUR KITCHEN LAYOUT

If this has already been decided, it can give you a good steer towards what worktop might be best. Straight runs are cheaper and easier to fit, while seamless materials such as composites make sense if you have lots of corners.

ADDED COSTS

Usually stone composites, granite and some woods will need templating by an expert. Every cut-out you have – for a hob

or under-mounted sink for instance – will cost around £80-100. Drainer grooves cut into stone by the sink will also cost extra.

CHOOSE YOUR PROFILE

The depth of worktop you choose can also alter the look of a kitchen. Thinner profiles of 10 or 20mm are still popular but thicker edges are also having a resurgence. The standard thickness is 30mm.

MIX IT UP

Don't rule out mixing two materials – a marble slab with wooden worktops, say, or a stainless steel island with a wooden breakfast bar attached. Different materials can serve different culinary purposes, and can also be used to visually order your kitchen.

Choose the best kitchen worktop material for you. The most popular materials for kitchen materials – laminate, granite, wood, glass, composite stone, stainless steel – have different advantages, so it's important to look at all the factors involved.

HARDWOOD WORKTOPS

A traditional favourite for its natural warmth and the character that comes as it ages, hardwood is preferred over 'soft' woods like pine for its strength. Popular choices of hardwood include oak and walnut. Always choose a sustainable hardwood, preferably from an FSC (Forest Stewardship Council) accredited source.

If hardwoods are properly sealed and maintained they will last for a long time, but don't use the worktop as a chopping board, or





www.design-storey.co.uk

place hot pans directly onto the wood as it can scorch.

Hardwoods require an initial programme of sealing using oil. Apply a coat once a day for the first week, then once a week for the next month, then once a month for a year.

Avoid direct exposure to heat and prolonged soaking, especially by the sink and tap area. Wipe up spills instantly to prevent staining. Once established, seal with Danish or linseed oil quarterly to stop drying out. Avoid using any abrasive and chemical-filled cleaning products or wire scouring pads.

COMPOSITE WORKTOPS

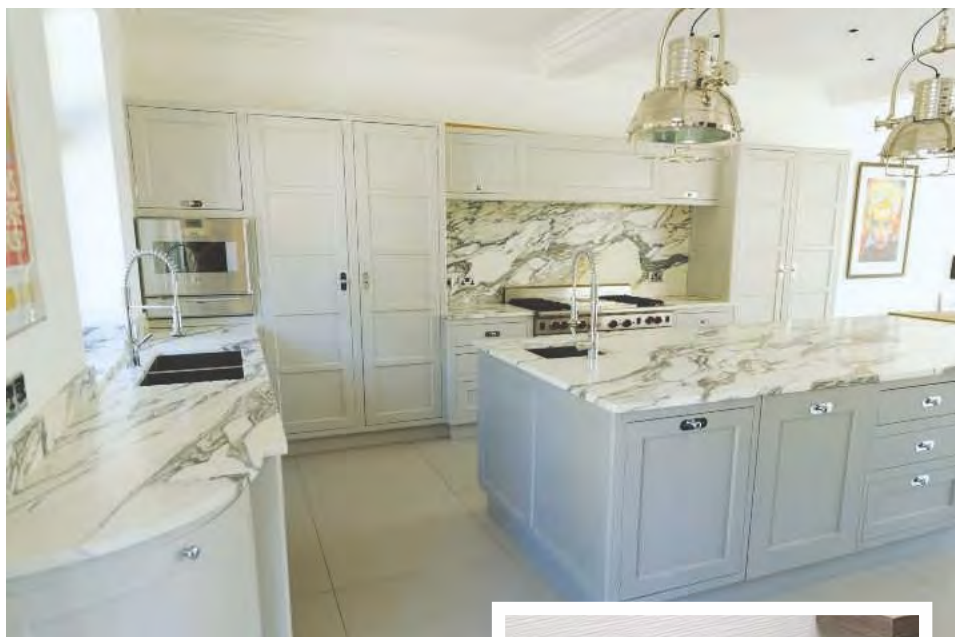
Made from about 90% natural quartz crystals mixed with a small percentage of binders, and referred to as both 'quartz composite' and 'engineered stone', this material is very tough,

virtually non-porous and resistant to scratches, stains, heat damage and impact, and often comes with a long warranty.

It also offers consistent composition so, unlike natural stone, there won't be variation in veining and colour shading.

This is a very practical and beautiful choice that can be used anywhere, including next to the hob and around the sink.

Composite is very tough and more durable than many natural stones. As the colour runs right the way through the material, any scratches can be sanded out. In the very unlikely case that your composite surface is scratched, chipped or stained it can often be repaired by a specialist. However, it is easier to achieve perfect restoration with acrylic composites as scratches can be sanded out, while quartz is more likely to be filled and any polishing can leave a dull area.



GRANITE WORKTOPS

For some, nothing beats the beauty of natural stone, its veining and colouring unique to each slab. Marbles are classically beautiful and luxurious, tend to be rarer and therefore are more expensive.

It's a luxury material that never falls out of fashion and suits traditional and modern styles. Choose from a classic polished finish, or a honed matt for a more contemporary look.

Granite is hard and resistant to heat and scratches, but it must be treated with respect to prevent damage. The best of all the natural materials, it can withstand high temperatures, is water resistant and impervious to most stains, but wine and citric acids must be cleaned up at once to avoid damaging the stone.

One great thing about granite is that it's very low maintenance. You can clean it using a damp cloth and a mild detergent.



LAMINATE WORKTOPS

Long considered the best budget option, laminates are non-porous, offer easy maintenance and come in lots of design and colour choices. Made by fusing multiple layers of impregnated paper under high pressure temperature and bonded to a substrate, they are resistant to impact, scratching and moisture.

They resist most stains and chemicals, but not heat or steam and are not suitable as a cutting surface. Choose a thicker, high-pressure worktop for greater durability.

Laminate is one of the few materials that can be cut and fitted by a DIY enthusiast rather than a kitchen professional. It is very low maintenance: clean with a cloth and mild detergent.

GRANITE OVERLAYS

What distinguishes a granite overlay worktop from all others is the remarkable ‘top that fits on top’.

Unlike regular work surfaces, the material is made only a quarter of an inch (6.7mm) thick and is especially lightweight, so that it can be installed over existing worktops without removing the original or needing extra underpinning.

For traditional kitchens, go for the look and feel of natural stone worktops, choosing either Italian granite or ultra-contemporary recycled glass. Black or white surfaces, some with mirror fleck, give an upscale look and check out the latest porcelain worktops too. Waterfall ends, right down to floor level, look elegant and stylish.



Over 30
styles and
over 90 colours

Quick & Easy way to upgrade your kitchen...

simply cover the worktops
replace the doors and drawer fronts
for a whole new look!

Special Limited Offer

Hurry - Don't miss out!



LIMITED OFFER VOUCHER

FREE Sink & Tap worth

UP TO **£300***

To claim this voucher simply present at our
showroom or call 01622 469 541
quoting voucher code **FREE£300**

Maidstone Showroom:
Notcutts Garden Centre,
Newnham Court Shopping
Village, Bearsted Road, Kent
ME14 5LH

Opening hours:

9am - 5pm Monday to Friday

9am - 5.30pm Saturday

10.30am - 4.30pm Sunday



Before

Don't just take our word for it

"Beautiful worktop laid over my existing granite. It transformed my kitchen. It has been much admired and visitors have commented on how brilliant the finish is."

Miss L - Kent



After

In a matter of hours

Transforming your old kitchen does not have to be stressful, as we have the products and expertise to modernise it within just a few hours, simply by replacing the door and worktops - **no mess - no fuss.**



Worktops

The top that fits on top

With over 1 Million installations globally, our worktops are the market leaders in terms of stunning styles and durability. Plus all our worktops come with an industry leading **10 Year Guarantee.**

Call: **01622 469 541** Quoting Code **FREE£300**

Visit: **trend-maidstone.co.uk** or: **visit our showroom**



TREND
transformations

*Free sink and tap up to the value of £300, with all kitchen orders over £2,900. Offer ends 31/01/2019. Not in conjunction with any other offer.

Ed Parry

Plumbing & Heating

Installation, Servicing & Repair

- Boilers
- Cookers
- Central Heating
- Bathrooms
- Power Flushing
- Showers



Landlord gas safety certificates

01227 266236 • 07976 925224
ed.parry@me.com
www.edparryplumbingandheating.co.uk



PETER JACKSON ARCHITECTS

Harbour Offices, Whitstable CT5 1AB

01227 770470
enq@peterjacksonarchitects.co.uk

Save on your home insurance



**Insurance for all types
of homes including:**

- High Value Homes
- Property Undergoing Renovations
- Non-Standard Construction
- Listed Buildings

gsi-insurance.com

GSI Insurance Services (Southern) Ltd
118 John Wilson Business Park
Whitstable
Kent
CT5 3QY

Tel: 01227 772 775

Your local broker has it covered

ALLBITS

Bathroom & Plumbing Supplies Ltd

- Extensive showroom with designs to cater for all budgets
- Knowledgeable staff on hand to guide you every step of the way
- See how your bathroom will look with our Virtual World 3-D designs

Unit 60
John Wilson Business Park
Whitstable CT5 3QT

01227 281648



WHITSTABLE DECOR

PROFESSIONAL PAINTING & DECORATING SERVICES

Internal and external • Tiling and plastering specialist.

Bathrooms and Kitchens • 30 years experience

www.whitstabledecor.co.uk

- Internal & external redecoration • Bathrooms, tiling & plastering
- Sash window restoration



Tel: 01227 687562 or 07948 464723



Celebrating 30 years
1988 - 2018



DOMESTIC CLEANING SERVICES LTD

Regular or One-off Cleaning

Homes and Holiday Lets

End of Tenancy

Moving Cleans

Spring Cleans

Professional, Friendly, Reliable Service

CALL US NOW FOR A FREE QUOTATION

Tel: 01227 277033 • www.supermaids.co.uk

info@supermaids.co.uk



Perfectly Pressed

— IRONING SERVICE —

If you have a busy lifestyle or just dislike ironing, then we are here to make your life just that little bit easier.

Simply drop your ironing off, whether it's a whole week's washing or just a few shirts, then pick it up at a time that suits you.

Tel: 07725 732535 (Whitstable based)

GODFREY
MARTIN

LISTED BUILDINGS | HERITAGE | RESTORATION | COMMERCIAL BUILDINGS



Godfrey Martin Ltd. operates as a principal contractor within London and the south east. We are particularly passionate about heritage projects, taking pride in restoring beautiful buildings and preserving them for the future. We have significant experience in working with historic and listed buildings. Our team has worked on some of the UK's most iconic and historical buildings, including Trinity House, The Royal Exchange and The Garrick Club. Our ethos is to deliver a high-quality product on time, within budget and without compromising on any aspect of the building process and quality.



Chartered
Building
Consultancy

Constructionline
Group Member

CHAS
Accredited Contractor
2008-2014



Godfrey Martin Ltd | Riverside House, River Lawn Road, Tonbridge, Kent TN9 1EP | 01732 783526

www.godfreymartin.co.uk

QUALITY | RELIABILITY | DELIVERY



Christmas at Copperfields

Passers-by in Whitstable High Street know Christmas is coming when Gemma of Copperfields puts together her fabulous window displays.

Every year she looks forward to searching for a new twist to her Christmassy stock, and this year she is delighted with the cute model reindeer and polar bears which are sure to be noticed in your home!

Copperfields, a cookshop and gift shop founded in 1956 and owned for the last five years by local businessman Kim Foster, really is a one-stop wonder for Christmas shopping. Here you can find useful and attractive gifts, grab a turkey tin, snap up some snazzy serviettes, and pick up armfuls of delightful decorations. Tick off your Christmas to-do list all in one go!

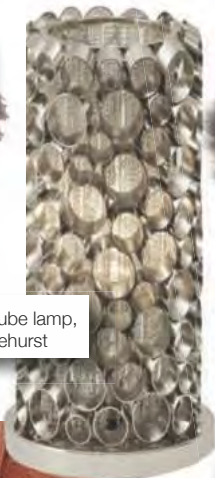




Faux fur throw, £95,
Visual Roars Emporium



Painterley cushion,
£35, Lenleys



Venus nickel tube lamp,
£699, Lukehurst



Herdwick sheepskin rug,
£135, Neptune



Sefton throw, £175,
Neptune



Puzzle ochre cushion,
£49, Lenleys

lifestyle

INSPIRING IDEAS FOR YOUR HOME



Teal glass lamp,
£215, Lenleys



Floral cushion, £39,
Visual Roars Emporium



Aspen hurricane lamp,
£75, Lukehurst



Tealight holder,
£20, Neptune



Lamp and shade, The Nurtured Nest

Period property specialist contractors



Tel: 01227 456933

- Period property restorations
- Lime mortar pointing
- Brickwork repair and replacement
- Structural and crack repairs
- Period property damp problems solved with traditional methods
- Lime rendering and plastering
- FREE property survey

We are looking for someone to join us who would like to learn this trade. If you are interested please call and speak to Bruce.

 Restoration
Lime



Unit 9, Barton Business Park, CT1 3AA
(by appointment only) Tel: 07977 027556

www.restorationlime.co.uk
restorationlime@gmail.com

Quality glass you can enjoy for years

Supply & installation
specialist offering a wide
range of made-to-measure
glass products and
bespoke glass solutions

CP Glass

01233 626045
cpglassandwindows.co.uk



© buildercenteranden.com

Shower screens/cubicles
Toughened glass splash backs

Double glazed units
Mirrors inc. antique

Balustrades/balconies
Horticultural/restoration

Supply of:
Windows, doors & conservatories

Orlestone Oak

Tailor-made Oak Joinery and Oak Flooring

ORLESTONE
OAK



SOLID OAK FLOORING



PRE-FINISHED & DISTRESSED FLOORS



NEW SHOWROOM DISPLAYS



OAK STAIRCASES & WINDOWS



OAK DOORS & PORCHES



OAK DECKING & BEAMS

www.orlestoneoak.co.uk 01233 732179

SHOWROOM OPEN MONDAY TO FRIDAY 9AM-5PM, SATURDAY 9AM-12PM

Anthony Swaine

ARCHITECTURE LTD

Conservation • Design Consultancy • Listed Buildings
Urban Design • Joinery Detailing • Traditional Shopfronts



**Initial consultation undertaken
free of charge**

**Specialising in traditional design & works to
historic buildings; timber framed structures; &
new buildings in the historic context**

The Bastion Tower,
16 Pound Lane,
Canterbury,
Kent CT1 2BZ

Tel: 01227 462680
mail@anthonyswaine.co.uk
www.anthonyswaine.co.uk



HERITAGE BRICKWORK RESTORATION LTD

- ‡ Repointing & Cleaning ‡
- ‡ Historic Brickwork Repairs ‡
- ‡ Gauged Brickwork ‡
- ‡ Mathematical Tiling ‡
- ‡ New Build with
Traditional Techniques ‡

Tel: 01227 264 737 Mob: 07866 388 962
info@heritagebrickworkrestoration.co.uk
www.heritagebrickworkrestoration.co.uk

EMPLOYED SKILLED WORKFORCE | RENOVATIONS & EXTENSIONS
CONVERSIONS & ALTERATIONS | DESIGN & BUILD



A.T. PALMER LTD

RESTORATION SPECIALISTS EST.1949

T: 01233 770077

Smarden Business Estate, TN27 8QL

atpalmer.co.uk



SJ MILWARD

Plastering Contractor

(Established since 1976)



SERVICES PROVIDED

- Traditional and modern methods
- Listed Buildings & period properties
- Lime & hair work
- Restoration & conservation
- Interior and exterior

Tel: 01227 281242
or 07721 054949

sjmilward@hotmail.com



Handmade bricks of distinction

Brick-Boss offers a range of traditional handmade bricks in an assortment of colours and blends.

The exclusive "Restoration Range" is ideal for all forms of renovation and heritage sites, making them a perfect choice for developers and self-builders.

Other services include:

- Quality cast stone products • Brick cutting
- Bespoke arches • Brick matching & site visits

BRICK-BOSS
.com

Call 01795 430239

7 Eaves Court, Bonham Drive, Sittingbourne, Kent ME10 3RY

SPECIALIST JOINERY



Boleyn House, Lakesview International Business Park,
Hersden, Canterbury CT3 4GP

Tel: 01227 712353 | www.dbsj.co.uk

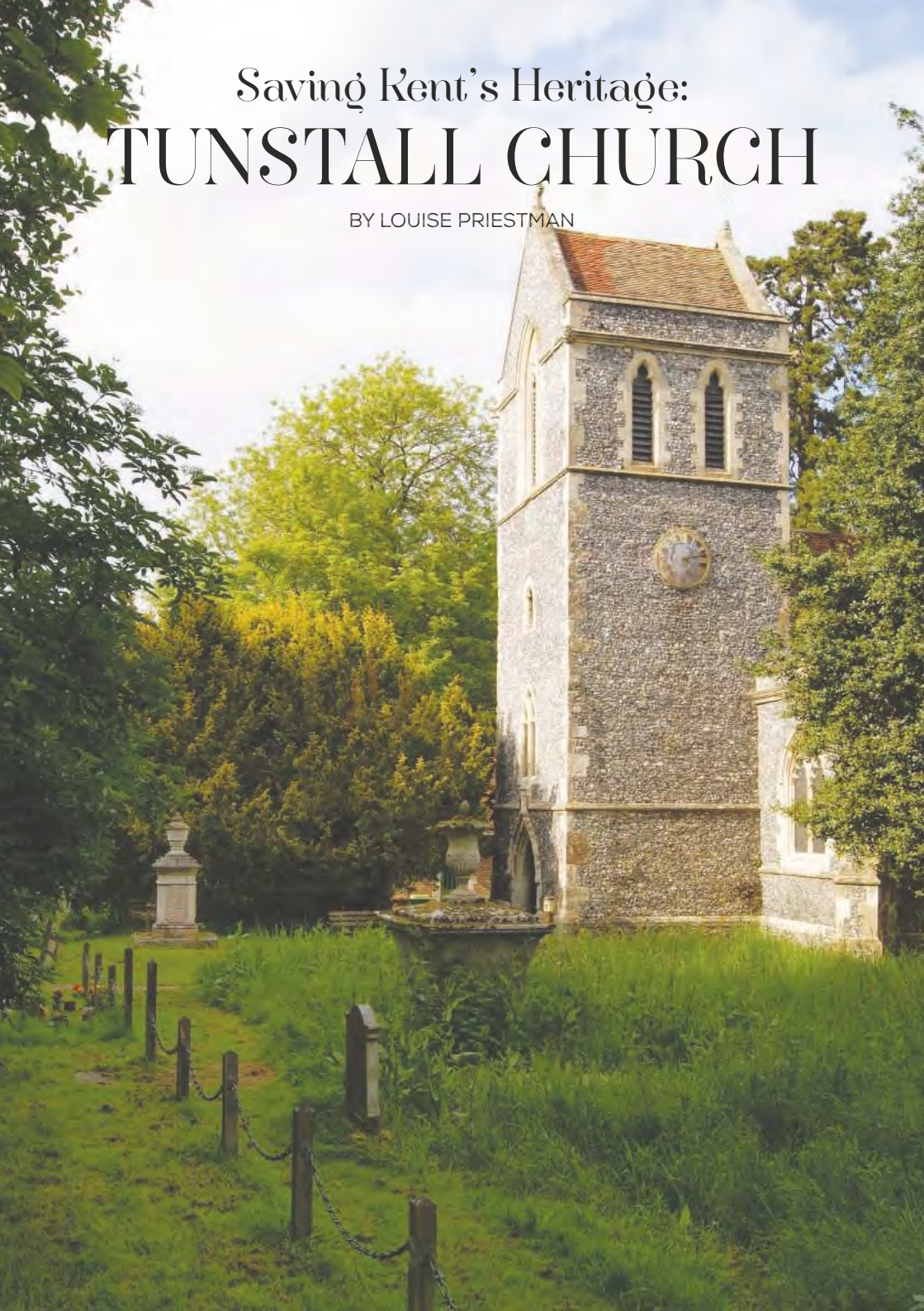


DB Specialist Joinery Ltd produces bespoke internal and external joinery including windows, doors, staircases & furniture for Shop fitters, Builders, Developers, Architects and private customers in the Kent and London area.



Saving Kent's Heritage: TUNSTALL CHURCH

BY LOUISE PRIESTMAN



WE FOLLOW THE ON-GOING RESTORATION OF TUNSTALL CHURCH, A GRADE 1 LISTED CHURCH OF GREAT ART-HISTORICAL SIGNIFICANCE

St John The Baptist, Tunstall, is a Grade 1 listed parish church dating back to the 13th century nestled in an ancient hamlet just north of the North Kent Downs, the setting providing a quintessentially English background to a building steeped in history.

Crossroad paths intrigue and delight as you make your way through the flint and brick wall and lush yew trees in well-maintained grounds. There are several grave memorials of such architectural quality they are listed in their own right.

Our churches have become more than just a place to worship, they provide tranquillity for the soul.

Tunstall Church is made of knapped and coursed flint with some brick and Kentish ragstone – flint being also a local material. It has a 13th century chancel and a 14th century nave and was extended in the 17th century. In 1848-56 it underwent a heavy round of restoration by R C Hussey, and much of his legacy survives in the fabric today.

Regular maintenance and consistent upkeep are required for buildings of such significance. On a building as varied as this, it can be a relentless and expensive task. Recent works undertaken include emergency repairs to the aisles. Both were re-roofed in the late 20th century following lead thefts, but the ceilings were showing evidence of sagging. Architect Jo Deeming, who works for conservation specialists Purcell, recommended removal of the ceilings based on their dangerous state. This would also give opportunity to inspect the condition of the



Above: The church roof



Above: The exterior clock

ancient roof timbers for hidden pockets of decay caused by water ingress and insect activity.

One of Jo's priorities is the protection of the historic fabric, whilst also ensuring the safety of church users and visitors. "Working in a living



Decayed timber



Armoury

building is always challenging, but none more so when that building is a church of great art-historical significance,” he says. “The fabric has different and complex meaning for parishioners, visitors and the statutory authorities who are charged with ensuring we make appropriate change.

“Our churches have become more than just a place to worship, they provide tranquillity for the soul.”

“To keep the church protected and speed up the work, we introduced two safety decks above the pews and sealed the arcades and windows from dust and debris. This minimised the downtime for the church.”

When working on ancient fabric, there are often hidden surprises. One possibility was the presence of historic painted decoration to the ceiling, hidden beneath later limewashes. This would have meant halting the works and a visit by a specialist to inspect and date any paintings. The inspection process proved that many of the most decayed works had previously been replaced, some even with plasterboard. The medieval roof timbers thankfully remained intact, with only small original sections of plaster trapped by the cornice.

It was found that moisture build-up in the roof void had accelerated the decay of some timbers and caused advanced nail rot in the lathe fixings. To keep as much of the historic fabric as possible, new ‘partner’ repairs were fixed, supplementing an old decayed timber with a new one to take the structural load.

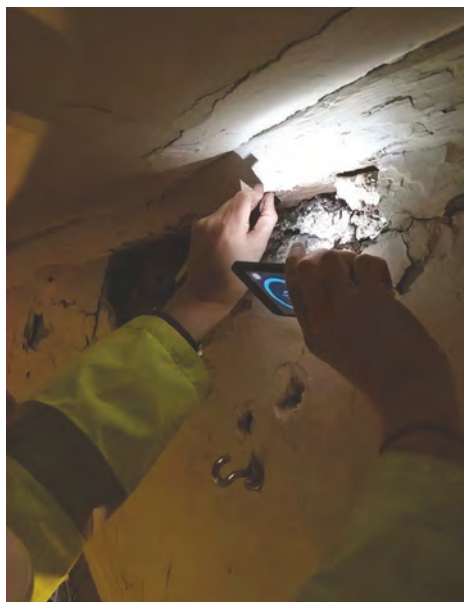
Vicar Alan Pinnegar says: “We have struggled to achieve substantial funding from individual trusts, though overall we have accumulated enough from various sources to carry out a significant portion of the urgent external work, hopefully in Spring 2019. This has been achieved



through small grants and donations from local people and organisations. We are hopeful that by March we will have sufficient funding to work on both sides of the main aisle, including the lady chapel.”

In the lady chapel, a tomb carries the inscription: “Here Lyeth Sire Edward Hales of Tunstall in the county of Kent knight and baronet who dyed 6th October 1654 in the 78th year of his age.” On top of the tomb lies an effigy of Sir Edward and, mounted on the wall above, is some funeral armour – a helmet and gauntlets – which were customarily made for funerals of gentry and aristocracy. The memorial is signed by sculptors W Sweet and M Miles, 1655.

Keep an eye out for the church’s Christmas Tree Festival which runs over four days, ending on the 2nd Sunday in Advent. Proceeds are divided equally between church funds and a local charity. Your support would be very much welcomed.



Louise Priestman works for architects Purcell, who have an office in Canterbury and are currently also overseeing work at Canterbury Cathedral.

*Karl
Terry*

Roofing Contractors

Kent Peg Tiling & Listed Building Specialists

High quality work by experienced multi award winning craftsmen .



Lead and chimney work



Slating & mathematical tiling



Conservation and renovation specialists



Listed and period properties



Repairs and maintenance

For free Quotations & Advice call **01797 270268**

or visit **www.kentpegs.com**



JAMES CLAGUE

ARCHITECTURAL PRACTICE & LISTED BUILDING SPECIALIST



Reimagining historic architecture for present day use requires a delicate balance of heritage and modernity. Where appropriate we incorporate inspiring design and the latest technology into the fabric of a historic building, allowing the occupants to be a part of its on-going narrative without compromising their comfort.



T: 01227 840460

E: info@jamesclague.co.uk

W: jamesclague.co.uk



Dolmen Conservation

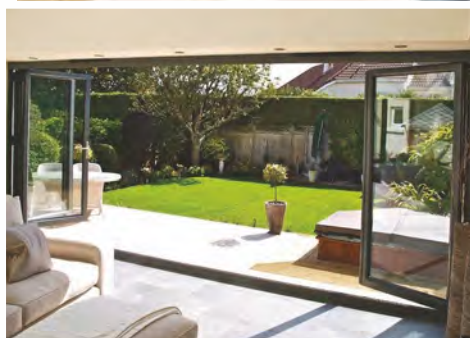
Specialist Conservation Carpentry and Historic Building Repair




ENGLISH HERITAGE
WINNER OF
ENGLISH HERITAGE AWARD
FOR CRAFTSMANSHIP 2011

T: 01233 860022 • M: 07804 881461 • E: projects@dolmenconservationltd.co.uk
The Woodland Centre, Warchorne Road, Woodchurch, Ashford, Kent TN26 3RJ
www.dolmen-conservation.co.uk

So you think all window companies are the same... *think again!*



COMPOSITE DOORS



If you're looking to add a conservatory to your property we are able to help you from start to finish including the base and all relevant footings.

 **Orchard Windows**
www.orchardwindowskent.com

Tel: 01634 261757

6 Orchard Street, Rainham,
Gillingham ME8 9AA
email: orchardwindows@outlook.com



KENTISH

FOOD • DRINK • PRODUCE

Local & loving it

Our county is packed full of fine food and drink.
From furrow to orchard, from marsh to shore -
Kent is crammed with foodie delights.

Fabulous locally produced food includes just-caught fish;
superb oysters; tender Romney Marsh lamb;
sweet soft fruit and tangy apples. Wash it down
with locally-made, world-class wine; a crisp cider
or a traditionally brewed beer.

All this makes Kent an outstanding place to eat out.
From contemporary Michelin-starred restaurants to
characterful eateries graced by log fires or stunning
sea views. Kent offers everything from fine dining and
gourmet Asian cuisine, to great grub in rural pubs.

Kent is also renowned for its orchards abundant
with apples, pears and cherries. Fertile soil, a
favourable climate and centuries-old expertise
create prime growing conditions.

MACKNADE

FINE FOODS

THE SOUTH EAST'S LEADING FOOD
HALL, DELICATESSEN & CAFÉ

JUNCTION OF SELLING ROAD AND A2,
FAVERSHAM, KENT, ME13 8XF

www.macknade.com
01795 534497

find us on:



CHEESEMAKERS of CANTERBURY

**Christmas Cheeses and Gift Hampers are
available now from The Goods Shed Canterbury
and at the Dairy Open Days
Dargate on the 19th, 20th and
21st of December**

**May we wish all our past, present and future
customers a very Happy Christmas & New Year**

Lamberhurst Farm, Dargate, Faversham, Kent. ME13 9ES 01227 751741

www.cheesemakersofcanterbury.co.uk

[cheesemakersofcanterbury](https://www.facebook.com/cheesemakersofcanterbury)

[@cheesesofkent](https://twitter.com/cheesesofkent)



*The Dog gift vouchers
available at
www.thedog.co.uk*



DRINK - EAT - SLEEP



The Dog at Wingham was built for Christmas...open log fires, old beams from which to hang holly & mistletoe, smouldering wood burners and cosiness only our historic inn gives you.

We start celebrating Christmas from Monday 19th November when we fire up the mulled wine cauldron and host our first Christmas parties!

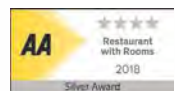


We are also taking bookings for Christmas Day, New Year's Eve and the whole festive period now.

Please call **01227 720 339** or email **info@thedog.co.uk**
to find out more and make a booking.

*We look forward to welcoming you with your colleagues,
friends & family this Christmas.*

The Dog At Wingham, Canterbury Road, Wingham, Nr Canterbury, Kent CT3 1BB



SAM'S

FREE RANGE TURKEYS



SAM'S TURKEYS are reared to the highest welfare standards, and are free to range the meadow and grassland which makes up nearly four acres of land.

Our turkeys come oven-ready, having hung for a minimum of 14 days. Traditionally prepared by hand, we guarantee the best quality turkey for your special meal. Our turkeys are available either whole or as a crown.

ORDER NOW

Tel: 07742 667491

Wey Street Farm

Faversham ME 13 9JB

email: info@samsturkeys.co.uk

www.samsturkeys.co.uk



Top turkeys for Christmas

SAM FIGGIS TELLS CONSERVATION NEWS ABOUT HOW HIS CHILDHOOD DREAM OF RAISING POULTRY HAS BECOME A REALITY

A happy turkey for a Happy Christmas – that’s what keen young farmer Sam Figgis is offering. The 21-year-old is passionate both about animals and about good food, a winning combination for his business Sam’s Turkeys which is based in Hernhill just outside Faversham.

An outdoorsy young man and a fifth generation farmer, it was his childhood dream to raise livestock. As a teenager he kept a couple of turkeys and some pigs at the bottom of the garden, going out to look after them in all weathers while many of his peers were indoors playing computer games. “I asked my mum if I could use an old chicken shed,” Sam recalls.

Leaving St Edmund’s School in Canterbury at 16, he went to agricultural college then travelled the world a bit before being offered an opportunity by a retiring local turkey farmer. Sam had also worked for and learned a lot from renowned KellyBronze Turkeys, which have been endorsed by Delia Smith and Jamie Oliver.

“I like turkeys and wanted to diversify from fruit growing. Actually I like all animals,” he says, telling of a fascinating ‘conversation’ he recently witnessed between a bunch of turkeys and a pheasant – which you wouldn’t get in an industrial turkey shed!

Sam buys five-week-old bronze turkey poults in June to raise to maturity for Christmas. They are free-range and slow-grown with a longer life than the average supermarket bird, allowing tenderness and flavour to develop. “Welfare of the birds is key,” says Sam. “I know they have



a very good life.” They are given freedom to roam over four acres and as well as being fed a traditional natural turkey mix, they are happy to be given a few apples from the farm and the opportunity to forage the ground for other food.

Hand-plucked, hand-prepared and hung for at least 14 days, the birds are guaranteed under the Golden Turkey Quality Assurance scheme as a premium product.

This is Sam’s second full season and his enthusiasm is growing. He hopes to raise 1,000 turkeys next year, and his ambition is for Sam’s Turkeys to become a well-known and trusted brand among people who appreciate what they eat.

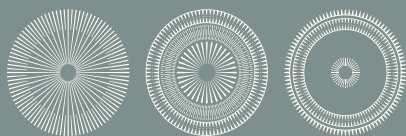
CHILHAM SHOP

Farm shop & plant centre

Canterbury Road, Chilham CT4 8DX
Tel: 01227 730348 | chilhamshop.co.uk
FREE LOCAL DELIVERIES

Serving Chilham and the surrounding villages for over 35 years with a wide range of fresh, fruit, vegetables, cut flowers, garden plants as well as a good selection of general groceries, dairy, bakery, frozen foods and much more.

Mon to Sat: 8:30am to 6pm Sun: 9am to 5pm (9am to 1pm in Jan & Feb). And Chilham Post Office



THE BARROW HOUSE

KITCHEN ♦ VILLAGE PUB ♦ ROOMS



 /BARROWHOUSE

THE STREET, EGERTON TN27 9DJ
WWW.THEBARROWHOUSE.CO.UK

@BARROW_HOUSE 



The **BLACKSMITH'S** *Arms*

17th century village pub, near the Pilgrims Way, set in rolling downland countryside. An inglenook log fire gives a warm welcome in winter. Good quality, locally sourced food served. No children under 14 allowed in bar or restaurant.

No vegetarian options available.

Open Wednesday - Saturday, 7pm - 11pm
Sunday lunch 12-2pm. Reservation required.

The Street, Wormshill, Sittingbourne ME9 0TU
Tel: 01622 884386

THE OLD NEPTUNE

A truly pleasurable experience



LIVE MUSIC

SATURDAY 9PM, SUNDAY 6PM

FOOD SERVED DAILY FROM 12 - 4PM

WEEK DAYS, 5PM - 8.30PM

Marine Terrace, Whitstable CT5 1EJ

01227 272262 • www.thepubonthebeach.co.uk

Theoldneptune

Birdies

**Now taking
Christmas
bookings**

OPENING TIMES

Lunch: Tue - Sun 12 noon - 2.30pm

Evenings: Tue - Mon 6pm - 9.30pm



Birdies is one of Whitstable's oldest family run restaurants, serving brilliant locally caught fresh fish features alongside great French classics.

41 Harbour Street, Whitstable CT5 1AH Tel: 01227 265337
www.birdieswhitstable.com

SERVES
EIGHT



In Their Footsteps

CELEBRATING 25 YEARS OF BAKING AT JERVAULX ABBEY

GREEK HONEY AND PINE NUT CAKE

Pine nuts are a real favourite, so this cake is a particular delight. Drenched in honey with a nutty texture, it happens to be both gluten and dairy-free. It's delicious served warm with dairy-free ice cream; there are some great options available today.

YOU WILL NEED

1 tablespoon pine nuts
4oz/113g dairy-free spread
3oz/85g caster sugar
3oz/85g runny honey
1 orange, zested
2 large eggs, beaten
6oz/170g wheat and gluten-free plain flour
1 teaspoon gluten-free baking powder
¼ teaspoon bicarbonate of soda
1 teaspoon cinnamon
1 teaspoon xanthan gum
2½fl oz/74ml soya, rice, or almond milk
2oz/57g ground rice

For the orange syrup:

2 tablespoons runny honey
1 orange, juiced

METHOD

Preheat the oven to 170°C/150°C fan and line the bottom of an 8 inch/20cm cake tin with baking parchment.

Toast the pine nuts on a baking tray under the grill, keeping your eye on them as they burn easily. Leave to cool. Cream the dairy-free spread, caster sugar, honey, and orange zest together until light and fluffy. Gradually add the eggs one at a time, and don't worry if the mixture curdles slightly. Sift the flour, baking powder, bicarbonate of soda, cinnamon and xanthan gum into the mixture then slowly fold in so you don't knock the air out. Slowly fold in half of the milk, then the ground rice and the remaining half of the milk. Spoon the mixture into the prepared tin, levelling the surface with the back of the spoon and then making a dip in the middle to get a level rise. Scatter the toasted pine nuts over and bake the cake for 45 to 50 minutes until slightly risen, golden and firm to the touch.

For the orange syrup:

In a saucepan, mix the honey and fresh orange juice together and slowly bring to the boil. Simmer for 5 minutes without stirring, until the syrup coats the back of a wooden spoon.

As soon as the cake is out of the oven, pour the syrup over the top and leave the cake in the tin until the syrup has soaked in and the cake has cooled completely, before turning it out onto a cooling rack. This cake freezes well and is also lovely served warm with a scoop or two of dairy-free ice cream.

LEMONY TREACLE TART

This tart is not only a real treat with a cup of tea in the afternoon, it doubles up as a pudding after Sunday lunch served warm with ice cream.

YOU WILL NEED

For the pastry:

6oz/170g self-raising flour
Pinch of salt
3oz/85g cold margarine
1 large egg, beaten
Cold water (if needed)

For the filling:

1lb 12oz/794g golden
syrup
4½oz/125g breadcrumbs
1½ lemons, zested
2oz/57g rolled oats
2 large eggs, whisked

METHOD

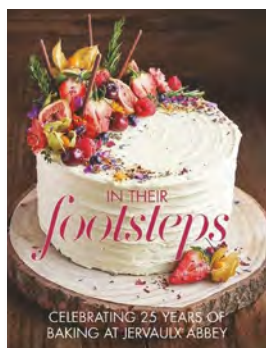
Preheat the oven to 170°C/150°C fan.

For the pastry:

Put the flour, salt and margarine in a large bowl and rub together until the mixture resembles breadcrumbs. Add the egg gradually while combining until you have a firm dough. If the mixture doesn't come together easily, add a tiny splash of cold water. Wrap in cling film and chill for 30 minutes. Roll out the pastry and line the tart tin, trimming off any excess that overhangs the sides. Store in the fridge until needed.

For the filling:

Warm the syrup in a pan, ensuring that it doesn't boil, and then stir in the breadcrumbs, lemon zest, oats and eggs. Pour into the pastry case and bake the treacle tart in the preheated oven for 30 to 35 minutes. The filling may still be slightly wobbly after this time but it will set as it cools. Leave in the tin to cool before turning out.



Recipes and photographs from In Their Footsteps: Celebrating 25 Years of Baking at Jervaulx Abbey; published by Meze Publishing.



SERVES

6





KENT

Farmers' Markets

DECEMBER

SATURDAY 1ST

Chatham; Penshurst;
Sevenoaks; Tunbridge Wells
(Pantiles); Wye

SUNDAY 2ND

Ashford; Tunbridge Wells
(Pantiles)

TUESDAY 4TH, 11TH, 18TH

Capel-le-Ferne; Hildenborough

WEDNESDAY 5TH

Lamberhurst

THURSDAY 6TH, 13TH, 20TH & 27TH

Charing; Rolvenden;
Shipbourne; Whitfield

SATURDAY 8TH

Bridge; Headcorn; Hythe;

Offham; Sevenoaks;
Tunbridge Wells (Town Hall);
Whitstable

SUNDAY 9TH

Herne Bay; Lenham;
Tonbridge; Brogdale Farm,
Faversham

FRIDAY 14TH, 21ST

Egerton

SATURDAY 15TH

Sevenoaks; Tunbridge Wells
(Pantiles); Wye; Yalding

SUNDAY 16TH

Aylesford; Rochester;
Tunbridge Wells (Pantiles)

SATURDAY 22ND

Bearsted; Bridge; Cranbrook
Hythe; Sevenoaks; Tunbridge
Wells (Town Hall); Whitstable

SUNDAY 23RD

Dover; West Malling

FRIDAY 28TH

Egerton; Maidstone

SATURDAY 29TH

Sevenoaks

SUNDAY 30TH

Cliftonville

JANUARY

WEDNESDAY 2ND

Lamberhurst

THURSDAY 3RD, 10TH, 17TH, 24TH & 31ST

Charing; Rolvenden;
Whitfield

FRIDAY 4TH, 11TH, 18TH

Egerton

**SATURDAY 5TH**

Chatham; Penshurst;
Sevenoaks; Wye

SUNDAY 6TH

Ashford

TUESDAY 8TH

Caple le Ferne

SATURDAY 12TH

Bridge; Headcorn; Hythe;
Sevenoaks; Tunbridge Wells
(Town Hall); Whitstable

SUNDAY 13TH

Herne Bay; Lenham;
Tonbridge

**TUESDAY 15TH, 22ND &
29TH****SATURDAY 19TH**

Sevenoaks; Wye; Yalding
Caple le Ferne;
Hildenborough

FRIDAY 25TH

Egerton; Maidstone

SATURDAY 26TH

Bridge; Cranbrook; Hythe;
Sevenoaks; Tunbridge Wells
(Town Hall); Whitstable

SUNDAY 27TH

Brogdale Farm, Faversham;
Cliftonville; Dover;
West Malling

FEBRUARY**FRIDAY 1ST, 8TH & 15TH**

Egerton

SATURDAY 2ND

Chatham; Penshurst;
Sevenoaks; Tunbridge Wells
(Pantiles); Wye

SUNDAY 3RD

Ashford; East Farleigh;
Tunbridge Wells (Pantiles)

**TUESDAY 5TH, 12TH,
19TH & 26TH**

Capel-Le-Ferne;
Hildenborough

**THURSDAY 7TH, 14TH,
21ST & 28TH**

Charing; Rolvenden;
Shipbourne; Whitfield

SATURDAY 9TH

Bridge; Headcorn;
Hythe; Sevenoaks;
Tunbridge Wells (Town Hall);
Whitstable

SUNDAY 10TH

Herne Bay; Lenham;
Tonbridge

SATURDAY 16TH

Sevenoaks; Tunbridge Wells
(Pantiles); Wye; Yalding

SUNDAY 17TH

Aylesford; Rochester;
Tunbridge Wells (Pantiles)

FRIDAY 22ND

Egerton; Maidstone

SATURDAY 23RD

Bridge; Cranbrook;
Hythe; Knockholt;
Sevenoaks; Tunbridge Wells
(Town Hall)
Whitstable

SUNDAY 24TH

Brogdale Farm, Faversham;
Cliftonville; Dover;
West Malling

*For more information on
Kent Farmers' markets and
what's in season please visit
www.kfma.org.uk.*



POPPING CORKS

WORDS: ROWENA HAWTIN

I WAS VERY FORTUNATE TO BE INVITED TO WICKHAM MANOR IN NOVEMBER TO VISIT THE PALMER FAMILY WHOSE COUNTRY ESTATE, OWNED BY THE NATIONAL TRUST, IS IN THE HISTORIC TOWN OF WINCHELSEA NEAR RYE.

Wickham Manor is a charming 16th century country house set in 750 acres of Sussex countryside and is the home of the family who run the farm and the vineyard as well as a bed and breakfast. The landscape has not changed much for centuries and with the peace and quiet here, you could actually imagine that you had gone back in time a couple of hundred years!

The vineyard itself is 30 acres and they planted their first vines back in 2006 with their first vintage in 2009 which won the Bronze Decanter award for their Classic Cuvee – a blend of Pinot Noir and Chardonnay. Encouraged by such a prestigious award for their first vintage, they went on to produce some outstanding premium sparkling wines and they are launching soon their 2014/5 vintage which I was lucky enough to taste before the formal launch.

All the grapes are hand harvested with whole bunch fermentation and using the Champagne method of production with an average of two to three years on the lees. The wines have a great concentration of flavour with south facing slopes, Kimmeridgian clay soil and, being just five miles from the Sussex coastline, this keeps the frost at bay as the nights are not so cold. They plant just two varieties – Chardonnay and Pinot Noir – and they make a 100%

Chardonnay, a 100% Pinot Noir and a blend of the two which differs from many other English sparkling wines which tend to include the other Champagne grape – Pinot Meunier. Conditions were also favourable enough this year to harvest the Pinot Noir for a still red wine; however, we will have to be patient and wait at least another four years to sample this!



These are the wines I tasted from the 2014/15 vintage and they are all very good indeed.



CLASSIC CUVÉE 2014
– PINOT NOIR 60%
CHARDONNAY 40%

On the nose, the concentration of red fruit is very prominent: strawberry, raspberry and an underlying earthiness clearly indicate the character of the soil. On the palate, there are delicate honey flavours, brioche from the lees ageing and great length and concentration. Perfect with scallops and most white meat. £38.00.

BLANC DE BLANCS 2014 – 100%
CHARDONNAY

A gentle persistent mousse, this wine has aromas of citrus, apricot and peach and a crisp, dry, refreshing acidity. On the palate, apple flavours linger and there is a nice long finish. After fermentation in stainless steel, the wine spent 3 years on the lees adding a creamy texture to the wine which complements the fresh fruit flavours. Serve on its own as an aperitif or it would pair very well with fish or a creamy cheese such as a goat's cheese. £39.50.



ROSE 2015 – 100% PINOT NOIR

I would describe this wine as off dry – not because there was much sweetness added – but the sheer ripeness of the fruit in this vintage gives it a lovely, smooth, off-dry texture. However, that crispness and refreshing acidity is not far away. Bursting with red fruits – cherries, strawberries and redcurrant – this is a superb example of an English rose. I recommend it to be drunk on its own or pair with some mild-flavoured cheese, so the subtler flavours of the wine are not overpowered. £40.50.



Tours of the estate and winery are £25 per person and tastings take place inside the family home at £10 per person for two wines and some well-paired nibbles. For more information and bookings telephone 01797 226216 or email sales@charlespalmer-vineyards.co.uk (www.charles-palmervineyards.co.uk)
#Thewinelady www.discoverthevine.co.uk

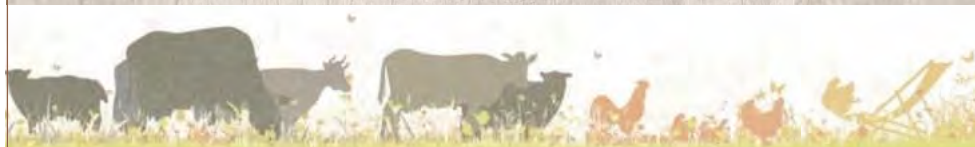
Bull Green Farm

QUALITY FARM PRODUCE

We are a family-run farm rearing Dexter cows, sheep and chickens. We believe animals should be able to roam free in the fields and enjoy fresh air and green grass.

We have a nicely stocked shop with fresh eggs daily, home grown veg, and a variety of local

products such as Kentish honey, jams, and occasionally freshly baked cakes. We also have a freezer packed with locally made pies and tasty treats. We carry seasonal goodies such as plants and shrubs in the summer and logs in the winter.



LOCATION: Bull Green, Bethersden. TN26 3LB
TELEPHONE: 01233 822 463
EMAIL: Shop@BullGreenFarm.co.uk



LOWER HARDRES FARM SHOP

- In-house butchery
- Award-winning Appledore turkeys; free-range geese; chickens; local game, pork, beef and lamb.
- Fresh local produce
- Fruit, vegetables and salad, sourced as locally as possible.
- Cheese and deli products
- Stockist of The Chai Stop finest curries
- Seasoned logs, coal and kindling
- Skinners dog food
- Local wines and ciders



www.lowerhardresfarmshop.co.uk Tel: 01227 700947 email: info@lowerhardresfarmshop.co.uk
Lower Hardres Farm, Lower Hardres, Canterbury CT4 5NU

Selling or Letting Your Property?

Online, In Person, Your Complete Service



Independent Estate & Letting Agents with Offices in Kent and London Providing Bespoke Marketing for Rural & Village Homes.
Call us for Confidential Advice on **01233 713127**

www.saddlersresidential.co.uk



DOWLE STREET COTTAGE, PLUCKLEY



A wonderfully attractive 15th century late medieval hall house, listed Grade II* set in a beautiful rural location in Pluckley.

Dowle Street Cottage is an excellent example of a Wealden Hall House.

The property has been lovingly cared for and improved by the present owners who have updated the kitchen and bathrooms to more contemporary styles, whilst retaining all of the character throughout the property.

The versatile accommodation is arranged over two floors including an entrance hall with heavy oak front door, kitchen/dining room with french doors leading directly onto the rear patio, stunning drawing room with inglenook fireplace and contemporary wood burning stove, ground floor en-suite bedroom, galleried landing with space for a small study area, master bedroom with en-suite bathroom and dressing room and a guest bedroom with en-suite bathroom.

The property benefits from a new LPG-fuelled central heating system and a private drainage system. Outside, the property is approached via a five bar gated entrance onto a long driveway that sweeps past the front of the house leading to a detached double garage and parking area.

The front garden boasts a wealth of mature trees and shady lawned areas along with a lovely lily pond. The rear garden is landscaped with patio, lawn and well tended borders and a small orchard.

PROPERTY DETAILS

Address: Pluckley, Kent

Price: £899,995

For more information contact: Saddlers
Reed House, 1-3 Old Ashford Road
Charing TN27 0JG

Tel: 01233 713127

www.saddlersresidential.co.uk





CONSERVATION NEWS

Kent Tel: 07725 732535 | email: dawn@cnkent.co.uk | www.cnkent.co.uk



Have you undertaken a renovation or conversion?

If you have undertaken your own renovation or conversion of a listed property we would love to hear from you.

Maybe you or your company are working on a listed building project.

Why not share your experience with the readers of Conservation News.

Send details of your project to dawn@cnkent.co.uk



INVICTA GAS INSTALLATIONS

Invicta Gas Ltd, Unit 45B Joseph Wilson Industrial Estate,
Whitstable, Kent CT5 3PS

Tel: 01227 770510 | www.invictagas.co.uk

EASY PARKING | LOTS OF CHOICE

New year. New kitchen.



Our January kitchen promotion will be here in no time at all,
but you can start designing right away...

Book a free design appointment now so that when January comes,
you're good to go.

Neptune Canterbury, 01227 209300

Neptune Tonbridge, 01732 351866

neptune.com



NEPTUNE