

CONSERVATION NEWS

Kent

Summer 2020 • Complimentary

Roofing SPECIAL

*Decorating
with salvage*



Ashford & Cranbrook RoofingTM

Traditional, modern and heritage roofing



- Built on reputation • Free, no obligation quotes
- Leading the way in quality • Kent Peg tile specialists

www.cranbrookroofing.co.uk



Tel: 01580 242925

STANDARD QUAY

FAVERSHAM

Faversham's
hidden gem!
Visit today!



Enjoy Faversham's Living History and Creekside

✱ *Kentish Waterside Attractions and Thames Barges*

✱ *Secret Gardens Tearoom*

'Delicious home-made food using locally sourced produce'

✱ *Butchers of Brogdale*

✱ *Cambria Barge Exhibition*

✱ *Aladdin's Loft*

Indoor Antiques & Collectables Market

✱ *Old English Tools*

✱ *Quayside CrossFit Gym*

✱ *Arriving Soon – Herman's 'Plaice' Fishmongers*

• *Salt & Spice*

Worldwide Spices and herbs

• *Characteristic Furniture Stores*

• *Fireplaces*

Wood Burners and accessories

• *Bridal Shop*

• *Surrey Bike Hire*

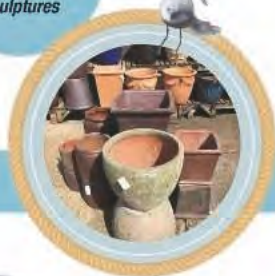
• *Car wash*

• *Units for Rent*

• *Moorings for Rent*

*Wonderful destination and
charming day out.*

*Large collection
of terracotta
pots and wind
sculptures*



FREE CUSTOMER PARKING. FREE WI-FI

Keep up to date on Facebook 

Rental enquiries: 07767 791040

Events at SQ enquiries: 01795 597616

Standard Quay,
Faversham ME13 7BS



WWW.STANDARDQUAY.CO.UK

Appleby • Grange



fine bespoke kitchens
handmade by local craftsmen

applebygrange.co.uk

Tel: 07779 809229

Published by
CONSERVATION NEWS

Kent

www.cnkent.co.uk

Publisher
Dawn Long

Contributors
Susan Hubbard
Louise Tomlin
Rowena Hawtin

Editor/Sales Manager
Dawn Long
Tel: 07725 732535
dawn@cnkent.co.uk

Design
Lynn Fasulo
Dandelion Design
Tel: 07961 740943

Front cover photo
Neptune

© Conservation News
(Kent) 2020



If you receive your copy of Conservation News by Royal Mail and wish to opt out of our mailing, please send an email to: dawn@cnkent.co.uk

All rights reserved. Reproduction of any part of this magazine is not permitted without written permission of the publisher. The publisher accepts no responsibility of any loss or damage in respect of any product or service that may be advertised.

Printed in the UK by Pensord

Welcome

SUMMER 2020

Welcome to our summer edition – what a lot has happened since our last magazine! The pandemic has left economic uncertainty for everyone, so it's really important that we continue to support our local tradespeople, not only to help them as individuals but also to ensure their skills are not lost.

Among these skills are roofing of different varieties and in this edition we particularly focus on these crafts, meeting a local thatcher, a family firm involved in the restoration of a Gilbert Scott church roof, and a talented painter who became a peg tile specialist as a 'proper job' to please his parents!

Appropriately in these times we look at some practicalities of creating a home office, and – from her daily 'pandemic walks' – writer Louise Tomlin tells how she particularly appreciated the efforts some householders put into their front gardens.

We also have an article on recycling the past, including salvage, antiques and vintage. Rowena Hawtin talks about vintage of a different kind on her visits to six local vineyards.

There are summer recipes and – while on the subject of food and thanks to the Pig at Bridge Place restaurant – a chance to win a copy of The Pig: Tales and Recipes from the Kitchen Garden and Beyond.

Dawn

Competition winners from Spring 2020
The winner of the pastry book was: Mrs Sutton from Maidstone
The winner of the 2 course lunch at The White Horse was:
Mr Best from Faversham



Sublime Storage



Copperfields
OF WHITSTABLE

Cookshop & Homewares Since 1956

shop@copperfieldsofwhitstable.co.uk

01227 273519 Open 7 Days a Week



What's inside

SUMMER 2020

- 10 **Gardening**
Summer gardening
- 16 **On the home front**
Practical ideas for beautiful front gardens
- 31 **Recycling the past**
Tips and advice on buying salvage for your home and garden
- 41 **Talent will out**
Karl Terry talks to us about his love of art and his passion for conservation roofing
- 52 **Saving our heritage**
An interview with Wayne Wills of Ashford & Cranbrook Roofing
- 58 **A new roof over their heads**
Part two of the Chestfield Barn renovation
- 66 **Summer recipes from The Pig**
Two recipes from Tales & Recipes from the Kitchen Garden
- 77 **Rowena Hawtin's wine column**
How has Covid-19 affected Kentish vineyards?





EVERGREEN LANDSCAPING

All aspects of landscaping work undertaken:

- Decking, patios, fencing
- Driveways, block paving, brick and stone work
- Ponds, planting and more.

All finished to a high standard at competitive prices.

Phone Lee 07799103112 / 01227 264482

For a free quotation or visit www.evergreengardenskent.co.uk



LIFETIME DRIVEWAYS

AWARD WINNING BLOCK PAVING AND RESIN DRIVEWAYS

Drives, Patios and Paths

0% DEPOSIT - PAYMENT ON COMPLETION

BLOCK PAVING - CONCRETE - TARMAC - SHINGLE
PATIOS - SLABBING - CRAZY PAVING - FENCING
NATURAL STONE - BRICKWORK - TURF & TOPSOIL
ARTIFICIAL GRASS - RESIN BOUND

01227 500237 Mob: 07731 316879

www.lifetimedriveways.co.uk





Preston Garden Centre

The Street, Preston Nr Wingham, Canterbury CT3 1ED



Tel: 01227 722250



OPEN EVERY DAY

Following government guidelines with a one way system in place

- Specimen trees and shrubs
- Great seasonal colour
- Hedging and screening
- High-rise privacy screening
- Large selection of pots
- Cards and gifts
- Garden furniture and water features
- Kents only Kadai fire bowl stockists
- Wheelchair friendly
- FREE Wifi
- Coppers Bistro

Friday & Saturday - 9.00am - 5.00pm Sunday-Thursday - 10.00am - 4.00pm



SUMMER GARDENING

It's suddenly the season of sweet peas, strawberries and summer sowing. This is a wonderful time in the garden, when flowers are starting to appear in abundance and there's plenty to harvest in the vegetable patch.

PLAN BEE

Solitary bees are efficient pollinators more so than honeybees and bumblebees and as they don't live in colonies or make honey they are non-aggressive.

This Dewdrop Bee & Bug biome provides nesting tubes for solitary bees & shelter for other beneficial insects in your garden. The centre contains bamboo nesting tubes and a drilled log ideal for solitary bee nesting. The unusual dewdrop shape of this habitat makes an attractive feature in your garden. It costs £17.99 from shopping.rspb.org.uk.



More broad beans?

It is possible to get a second crop of broad beans, especially if the summer is good. In July and August, when the broad bean plant has finished, cut down the stem close to the ground about 15cm near a growing point and give it a feed. On a good year it will re-grow and produce a second, smaller crop.



DRY OUT ONIONS

If there's a decent spell of dry weather onions and shallots can be left on the ground to dry out. It is important that before you put onions into storage they are completely dry. If they even very slightly damp they will start to rot very quickly.

The greenhouse is the ideal place for the job. Onions and garlic will store for a year in the right environment, so it is important to get them really dry before storage.





TURN ON THE SUNSHINE!

No other plant sums up high summer and colour in the border than the versatile and spectacular rudbeckia. Right on cue for the high summer days of July and August, rudbeckia lights up gardens and borders everywhere like bright rays of sunshine. They also attract a continuous procession of pollinators, bringing even more colour to the summer garden. Because it is late into flower it sometimes gets tucked at the back of the border, but it deserves a front seat where its beautiful blue-grey foliage can be appreciated.

EDIBLE GARNISH

You can buy edible flowers from specialist suppliers, but why not grow your own?

Nasturtium: Super easy to grow by seed and make a beautiful garnish. Just keep in mind they have a spicy flavour.

Lavender: Add it to sugar for a bit of a floral flavour, mix into summer lemonades, or use it to decorate pretty cakes.

Pansies: These pretty flowers look adorable on top of cookies, or when sugared and used to decorate a cake. You could even detach the petals and sprinkle onto summer salads.

Calendula: An easy annual to grow by seed. They're best enjoyed with the petals removed and sprinkled on top of greens or a hearty couscous.



Seasonal gardening tips

- Sow biennials such as foxgloves, sweet william, wallflowers and forget-me-nots, to plant in autumn for a beautiful display next spring.
- Water plants regularly - daily for containers and a thorough soaking once or twice a week for the rest of the garden.
- Take cuttings from tender plants, herbaceous perennials and shrubs.
- Deadhead flowers to prevent the plant from setting seed.
- Sow late summer and winter crops such as cabbages, carrots, cauliflower and lettuces.
- Refresh bird baths and feeders, top up ponds.

TRIM LAVENDER

Give lavender plants a light trim all over as soon as the flowers are past. Like all silver leaved Mediterranean shrubs they dislike being pruned back into dead wood, so you need to keep them trim and neat with an annual going over. Use shears and take off just and inch or so to stimulate new growth.



BJ CESSPOOL SERVICES LTD



Tel 07796 282864 or 01233 624017

www.bjcesspool.co.uk

If you want someone who is reliable, careful and efficient to empty your cesspool, septic tank or treatment plant please call Barry or Fiona Spicer.

- Emergency blockages
- Septic tank clearance
- Cesspool maintenance
- Treatment plant maintenance

We can help you with your home, rental properties, caravan parks, hotels and in fact any property that is not on main drains.

A jetting service can also be provided.

MILES SKIP HIRE



- Mini • Midi • Maxi
- Builders bags
- Domestic & commercial
- Permits arranged
- Smaller lorry for easy access

ALL AREAS COVERED

- Sandwich • Deal • Dover
- Thanet • Canterbury
- Faversham • Whitstable

Tel: 01227 362080
07860 860088



Landscaping specialists

- Block paving
- Driveways
- Decking
- Fencing
- Patios
- Turfing
- Garden clearance
- Building & maintenance work



www.drivewayexperts.co.uk



01227 749872 | 07770 964939

THE GARDEN CREATIVE

SARAH MORGAN

Design

07725055701

Landscaping

sarah@thegardencreative.com

Planting

www.thegardencreative.com

After-care



@thegardencreate

Award-winning Garden Designer



FULLY FITTED ROLLER GARAGE DOORS

FROM **£895*** WAS **£1,354** INC VAT

* Offer Valid For Openings Up To 2.6m Wide & Inc:
3 Remote Controls, Silver White Slats,
Internal Manual Override

WHATS INCLUDED:

- ACOUSTIC & THERMAL INSULATION
- TWO REMOTE CONTROLS
- EXPERT MEASURING & FITTING
- 24 COLOURS AVAILABLE

**Made To Measure...
ROLLER GARAGE DOORS**

Garolla can save a lot of space inside your garage. Rolls up vertically into a box. Takes only 8 inches of head-room! Opens vertically so you can park up close to the door. Remotely open/close the garage even from inside your car.

CALL US TODAY

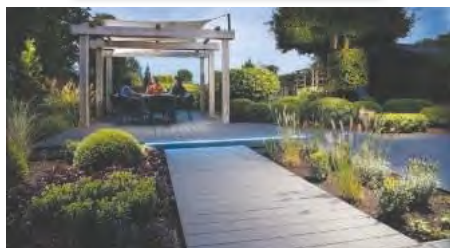
Phone:
01233 696 476

Mobile:
07537 149 128

GAROLLA
ROLLER SHUTTER DOORS
www.garolla.co.uk

CE Approved

EAST KENT TIMBER LTD
TIMBER MERCHANTS



- Softwoods
- Hardwoods
- Sheet materials
- Decking
- Machined to your design



Contact us on: 01227 738838
Email: sales@eastkenttimber.co.uk
www.eastkenttimber.co.uk

HIGH SPEC CLEANERS

Based in Tankerton & covering surrounding areas

We provide a professional pressure washing cleaning service for both domestic and commercial customers

Call Robin 07907 219102
www.highspeccleaners.com



EVERLAST LANDSCAPES

EST. 1978



OUTDOOR LIVING BROUGHT TO YOUR HOME

Established in 1978, Everlast Landscapes offers a comprehensive range of home and garden construction and design services. From simple fencing, sheds and log cabins - to driveways, landscaping and complete house builds, Everlast can do it all.

**CONTACT US TODAY
FOR A FREE ESTIMATE**

T 01227 375 275 **F** 01227 373 853
E info@everlastlandscapes.co.uk

www.everlastlandscapes.co.uk

On the HOME FRONT

LOUISE TOMLIN TELLS HOW SHE PARTICULARLY APPRECIATES THE EFFORTS SOME HOUSEHOLDERS PUT INTO THEIR FRONT GARDENS

Something we all may have been doing in recent months is walking in our local areas and possibly having the luxury of more time to really take in the scenes around us, I know I have. I've noticed what an effort some homeowners make with their properties. Front gardens are becoming a thing of the past these days with so many paved or concreted over to provide parking spaces which I'm sure you will agree are generally less than appealing. And yet some people take great pains with their colour schemes, their careful planting and the choice of ornamentation, somehow managing to combine these elements beautifully to create uplifting and pleasing scenes for those of who happen to pass by to enjoy.

We've decided to celebrate the diversity of front gardens and the ingenuity of the unsung suburban heroes who thankfully make such attempts to green up our towns and cities by making front garden paradises. These havens are beneficial to our environment and act as a counterbalance to the careless litter louts and households who just can't seem to manage to put their wheelie bins away or keep the rubbish inside them off the pavement! So here's a selection of prime examples of lovely front garden views that we've singled out for special attention, that we'd like to share with you. This is an opportunity for us to say a sincere thank you to everyone that strives to make your garden look beautiful.



DELPHINIUM DELIGHT

The owners of this property are obviously lovers of these wonderful plants, so beloved of cottage-style gardeners. They've made them the star attraction by choosing many different shades of Delphiniums from powder blue to deep purple. The summer flowering perennials from the Larkspur family have tall showy spikes of flowers that burst upwards from the sympathetic planting of blue geraniums and contrast with the buff brickwork of the house, that is echoed in the soft cream gravel of the driveway. The overall effect is very classy indeed.

ENCHANTING ENTRANCE

I don't know about you, but this inviting image transports me to days gone by? It has a romantic allure that tempts you up the pathway to a charming, white painted, decorative ironwork porch. I can imagine the heady scent of the lavender wafting up as you brush past it. What could be quite a formal scene has a lovely natural feel. Red and white Valerian has self seeded amongst the lavender, which the owner has left to grow, a relaxed approach that pays off. I just love the way the decorative pattern of the frieze panel of the porch casts a perfect shadow on the front door's bottom panel. All in all this is simply gorgeous.



NAUTICAL BUT NICE!

Beach themes are very popular not just in seaside towns, surprisingly I've seen them in inland settings too, maybe because they are fun to do and when they are done well they are very effective. This one also goes to show that it's possible to make a statement in a very small space without going overboard and scattering seashells, fishing nets and an over turned rowing boat. Whoever dreamt this one up is definitely a minimalist and an artist. The house is clad in white weatherboard which acts as a perfect backdrop for a coiled rope, driftwood, beautiful pebbles in muted shades some the same colour as the sandstone paving. A single pot with an Agave in it and a stunning burgundy Maple, complete the effect. It is superb.





LESS IS DEFINITELY MORE

Riotous colour and abundant floral displays are clearly not to everyone's taste. Some homeowners are masters of minimal and unfussy elegance. If it wasn't for the blast of strong red from the geraniums in the planters this could almost be seen as monochromatic. It has clean and simple lines. The classic standard Bay trees in plain box planters match the strong black horizontals and verticals picked out in the structure of the house. It's graceful and sublimely stylish.

WONDROUS WISTERIAS

No round up of notable frontages would be complete without at least one that shows the flowering favourite Wisteria, that adorns many houses in spring and early summer. It's no mean feat to have grown one up to the front of the house like this example does. They need careful pruning, training and commitment over many years to end up looking this good. Bravo!



WHAT COULD BE MORE WELCOMING?

This sweet little garden is an eclectic mix of styles that work so well together to create a pleasing setting. A gravel garden with timber sleepers and restrained planting looks cool and trendy. The traditional white picket fence complements the welcoming white bench, which seems to invite you to take a pew and relax for a moment. Large simple terracotta pots that are home for a deep red Maple and a European fan palm complete the charming scene.

TARMAC & RESIN BOUND GRAVEL SPECIALISTS

A photograph of a worker in a high-visibility vest operating a blue roller on a gravel driveway. The driveway is bordered by a wooden fence on the left and trees on the right. The background is slightly blurred.

KENT
SURFACING
CONTRACTORS

Kent Surfacing Contractors LTD are a third generation surfacing company based in Challock, Ashford.

We have built a trusted name amongst domestic, commercial and industrial clients through our high standard of work.

We work with developers on a regular basis, forming anything from new roads and drainage for new development sites, to the driveways and patios.

We offer a free site survey and full written no obligation quotation.

- ✓ 10m Public Liability Insurance
- ✓ Free Survey & Quotation
- ✓ Trading Standards Approved

- DRIVEWAYS
- FOOTPATHS
- CAR PARKS
- FORECOURTS
- PRIVATE ROADS
- DROPPED KERBS
- GROUNDWORK
- PATIOS

- DOMESTIC
- COMMERCIAL
- INDUSTRIAL

01233 349 012

www.kentsurfacingcontractors.co.uk

Want the best lawn ever?

From only
£15*
per treatment



Who are GreenThumb:

As pioneers in British lawn care, we are the UK's largest and most recommended provider with millions of treatments taking place across the UK every year. With over 30 years of experience, you can rely on us to provide your lawn with the **very best** care

Measure your lawn online

for an instant estimate

greenthumb.co.uk/measure

For a **FREE** lawn analysis
call 01227 652351 or email canterbury@greenthumb.co.uk

greenthumb.co.uk



*Based on a lawn size up to 40m²

MG CONTRACTS

Tel: 01424 892265 or 07831 643835

Working in Kent & Sussex areas

MG Contracts is a family business with 32 years experience in building tennis courts and sport areas. The company provides free surveys and quotations. All courts are constructed to high specifications and are supported with a long guarantee.



Resurfacing and construction of all-weather tennis courts

Please contact us for further information

Manchester Road, Ninfield, East Sussex TN33 9JX. Tel: 01424 892265 or 07831 643835
mgsc@btconnect.com • www.martingurtenissurfaces.co.uk



Come visit us in store for a warm, friendly welcome, stocking all your needs for outdoor pursuits.

Our store is open five days a week, visit us at

IN THE COUNTRY

Ashford Road

Badlesmere

Kent ME13 0NX

Wed – Sun 10am - 4pm

01233 742000

STOCKISTS OF:

- Laksen
- Deerhunter
- Hoggs of Fife
- Gumleaf
- Bonart
- Percussion
- Stetson
- Ariat
- Alan Paine
- Redback Boots
- Dog training equipment by Sporting Saint



Gary Miller

PAINTER & DECORATOR



30 years experience specialising in period & country properties across Kent. References available.

24 High Dewar Road, Rainham ME8 8DN

Tel: 01634 235773 or 07971 871433

garymillerdecorator@gmail.com

NEED SHELTER OR SHADE?



VERANDAS, AWNINGS AND CARPORTS

Supplied and installed. Call for a free quote today!

SBI Ltd est. 1998 – Most installations completed in a day!

Awning servicing, repairs, cleaning and replacement parts.



CALL NOW 0800 0742 721 sbiproducts.co.uk

Save on your home insurance



Insurance for all types of homes including:

- High Value Homes
- Property Undergoing Renovations
- Non-Standard Construction
- Listed Buildings

gsi-insurance.com

GSI Insurance Services (Southern) Ltd
118 John Wilson Business Park
Whitstable
Kent
CT5 3QY

Tel: 01227 772 775

Your local broker has it covered

7 DECORATING TIPS to bring colour outdoors

TOP TIPS ON BREATHING SOME LIFE INTO YOUR OUTDOOR SPACE – WHATEVER FORM IT MIGHT TAKE – WITH COLOUR AND FINISH. WHETHER YOU'RE TARGETING WOOD, METAL, MASONRY OR A MISCELLANY, EXTERIOR PAINT FINISHES CAN OFFER A HELPING HAND.

1. ALL FEATURES GREAT & SMALL

Whether your garden is a large landscaped plot, a single window box bursting with blooms, or anything in between, colour is a wonderful way to ensure it feels connected to your indoor space. Highlighting an outdoor feature in a shade you've used inside the house is a surefire shortcut to indoor/outdoor flow, perfect for long summer evenings with the doors thrown open.



2. BE BOLD

Colours will always appear lighter in full sunlight, so when choosing a colour for your front door, fencing or masonry, don't be afraid to go a few shades darker or bolder than you would usually. We recommend painting a sample pot onto a piece of card and checking you're happy with how your chosen colour appears outdoors before you take the plunge.

3. GO FOR GREEN

When it comes to creating a naturalistic look, nothing beats green. On plant pots or fences, organic shades such as Lichen and Vert de Terre step back and let brightly coloured blooms take centre stage, while deeper, darker shades create a striking contrast with paler planting schemes.



4. FRESHEN UP YOUR FURNITURE

If your outdoor furniture has seen better days, there's a more economical and environmentally friendly alternative to trading it in for a brand new set. You can treat lacklustre wood and metal garden furniture to an entirely new look and add longevity in one fell swoop with ultra-hardy exterior eggshell or full gloss finishes.



5. DON'T FORGET ACCESSORIES

Thinking smaller when it comes to colour can hold big rewards. Plant pots, baskets and raised beds can be matched to their contents – Brassica makes a particularly lovely partner for pollinator-friendly lavender – or painted in a contrasting tone for a striking effect. You can even use colour to create a welcoming space for wildlife, as the painters of this charming bird feeder have done.



6. PLAY WITH FINISHES

It's not just the colour you choose that can have a huge impact on your final look – the finish can too. A few coats of full gloss will add an extra touch of drama to any front door, especially paired with a smart dark shade.



7. LAYER UP

You can add interest to any outdoor space by layering up different shades, just as you would indoors. Garden furniture, doors, brickwork, and even conservatories and greenhouses can all be excellent vehicles for colour. Creating a palette that matches your planting scheme is a great way to give a cohesive and considered feel; equally, if you have paint left over from previous projects, you can create a charming eclectic effect by painting each piece of furniture a different colour.

Article courtesy of farrow-ball.com



K Cleal's
Upholstery - family-run business
Now with over 55 years experience



Why replace your furniture when I can:
Repair and recover your dining chairs.
Carry out any re-upholstery and recovering in a wide range of fabrics
Renew old cushions - Replace rubber webbing - Renew old springs
Cane seating - Caravan and boat cushions

- Domestic
- Contract
- Antique
- Modern



21 Oakwood Drive, Whitstable
Kent, CT5 1NY
Tel/Fax: 01227 273811
Email: juliecleal@hotmail.co.uk

SOUTHGATE ELECTRICAL CO. LTD
The Best Electrical Services

Offering a full range of electrical services
from design to installation

- External Electrics
- Access and Security
- Electric Showers
- New Builds
- Space Heating
- Fire Alarms
- Landlord Certificates



T: 01227 712790 / 07889 895394
www.electricians-canterbury.com

APPROVED CONTRACTOR

Ed Parry
Plumbing & Heating

Installation, Servicing & Repair

- Boilers
- Cookers
- Central Heating
- Bathrooms
- Power Flushing
- Showers






Landlord gas safety certificates

01227 266236 • 07976 925224
ed.parry@me.com
www.edparryplumbingandheating.co.uk

WHITSTABLE LAVENDER

HANDMADE

ARTISAN

LOCAL

ORGANIC

PARABEN FREE

LANOLIN FREE



www.whitstablelavender.com

7a High Street, Whitstable CT5 1AP | 01227 280065 | 07772208631



Fancy an awarding-winning addition to your garden this year?
Get in touch to order yours or to book a quotation for a wood burner installed this year!



"Over the moon with our Morso wood burner! From first visit to planning and Installation everything has been so easy. It's been a pleasure to deal with this company from start to finish. No hesitation in recommending to anyone."

Little Crockshard Farm Shop, Crockshard Lane, Wingham, Nr Canterbury.
CT3 1NYT Tel: 01227 728130 www.winghamwoodburningstoves.co.uk





Celebrating 30 years
1988 - 2018



DOMESTIC CLEANING SERVICES LTD

Regular or One-off Cleaning

Homes and Holiday Lets

End of Tenancy

Moving Cleans

Spring Cleans

Professional, Friendly, Reliable Service

CALL US NOW FOR A FREE QUOTATION

Tel: 01227 277033 • www.supermaids.co.uk

info@supermaids.co.uk



Perfectly Pressed

IRONING SERVICE

If you have a busy lifestyle or just dislike ironing, then we are here to make your life just that little bit easier.

Simply drop your ironing off, whether it's a whole week's washing or just a few shirts, then pick it up at a time that suits you.

Tel: 07725 732535 (Whitstable based)



FOR SALE

Would you like to take over this fabulous shop and spacious 4 bed accommodation?

Period building (1862), sea views, only 50 yards from the beach in the delightful village of Sandgate. £400,000 (freehold) plus stock at valuation (if required)



OLD ENGLISH PINE

♦ EST. OVER 30 YEARS ♦

— FURNITURE & DECORATIVE ACCESSORIES —

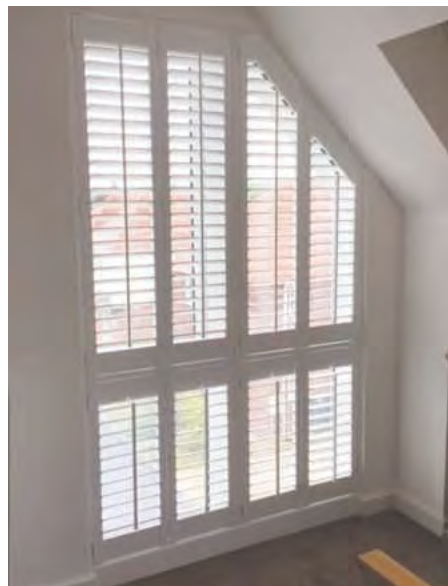
Our extensive premises, set over three floors are arranged in room settings with antique, reproduction, French style, white painted and bespoke furniture.

We also stock a wide range of beautiful old and new accessories, to help you make your house a home.

100/102 & 90 Sandgate High St,
Sandgate, Folkestone CT20 3BY

Tel: 01303 248560
www.oldenglishpinekent.co.uk

Shutters manufactured in
Europe, supplied & installed
within four weeks



CGS BLINDS & SHUTTERS LTD

Come and visit our new showroom
• Huge choice • FREE quotations

Tel: 01227 278643

146 Tankerton Road, Whitstable CT5 2AW

www.cgsblinds.co.uk



Find us on Facebook

The Antique Oak Flooring Company

SPECIALISTS IN ANTIQUE AND RECLAIMED FLOORING



VIEWING BY APPOINTMENT

Willow Court Farm, Bilsington Road, Ruckinge, Ashford, Kent TN26 2PB

T: 01233 659508 M: 07733 263540 www.antiqueoakflooring.com

RECYCLING THE PAST

BUYING SALVAGED, VINTAGE OR ANTIQUE ITEMS FOR YOUR HOME WILL NOT ONLY ENHANCE ITS CHARACTER, BUT ADD INDIVIDUALITY AND A SENSE OF HISTORY. IT'S ALSO AN ENVIRONMENTALLY-FRIENDLY CHOICE!

There are so many vintage and architectural treasures to be found that not only bring an abundance of period charm to your home, but help restore original features that may have been damaged or lost over the years.

Re-using items rather than buying modern reproductions also cuts down on the environmental impact.

Salvage and reclamation dealers often have specialities, focusing on specific items such as radiators or timber beams; others sell pretty much anything. Some yards can look a bit rough and ready, so be prepared to look hard and use a bit of imagination in your hunt for that hidden gem. Smaller businesses tend to curate stock and show it to its best advantage.

BE CREATIVE

Finding new ways to use ordinary items can offer exciting possibilities. Consider how old items can be used out of context. Old factory lamps can be used to illuminate a work-table. An old bureau can be painted and then used to house vintage table linens and mismatched crockery. Consider painting it and putting on different handles or drawer pulls.

A collection is always more interesting when you have a lot of one thing. It makes a definite statement. It could be mixing bowls or serving dishes: mix and match and arrange items in a

salvaged cupboard for an eclectic look.

Little things can make a big impact. An industrial stool or wall hook, a rusted planter, or a shelf above a row of hooks will do the trick. Vintage signs can also add a graphic touch.

TIPS FOR BUYING

- Be prepared to haggle on price, especially when buying in quantity.
- Factor in the cost of delivery on larger items.
- Don't be afraid to ask about the provenance of an item.
- Stock is always changing, so be prepared for more than one visit.
- Take a tape measure. Oversized pieces can overwhelm rooms so look at the scale of what you buy in relation to the room for which it is intended. If you are buying an original Victorian bath check that your floor can take the weight and that you have enough hot water to fill it.
- If there's something specific you're looking for, ask the owner to try and hunt it down for you or add it to their wanted list. If something comes in that they think will suit your needs they will get in touch. Most businesses will reserve items for a limited time.
- Don't use too much salvage or your home will look like a junk shop. Buy what you like. And work pieces into a room – if it's an afterthought, it will look like an afterthought.



The Potting Shed, Folkestone

Key salvaged buys

CHAIRS

Old classroom chairs have a super industrial vibe and look great mismatched. Classic designs include plywood stacking chairs, sculpted plastic Robin Days or metal and wood. A big old armchair makes an eye-catching statement when re-upholstered in a bright colour.



The Potting Shed, Folkestone

CABINETS

Old wooden cabinets from apothecaries or haberdashers are a wonderful way to inject period character. They look good anywhere, so think laterally. Vintage cabinets can be pricy, but there are bargains to be had if you hunt around.

VINTAGE MAPS

There's something inherently pleasing about a vintage map: the colours, the faded paper, the doorway into a different geography and way of viewing the world. They're a great way to add a sense of history and a hint of mystery to any room. Try to choose a map location that reflects your passion.

SIDEBOARDS

A mid-century sideboard is a real statement piece. These practical items of furniture add warmth and instant quirky chic. They vary in price, but affordable G Plan and Ercol sideboards are still reasonably easy to hunt down, while original Danish teak designs can cost more.

RADIATORS

A refurbished original radiator is of superior quality, durable and eco-friendly. You may pay a bit more, but the result will be authentic and appropriate for a period home.

BATHS

Vintage baths are generally deeper and more comfortable than their modern counterparts. Check the surface. If it's flaking it will need to be stripped and resurfaced which will entail extra work and cost.

LIGHTING

Industrial metal pendants are the go-to style for dining rooms across the land. Angled factory shades can be placed in a row over a kitchen counter for ambient light. They work equally well in a corner of a room or to light a feature wall. Always check lighting is wired safely.



Workshop Number 29, Folkestone

WHERE to buy

Warehams, Whitstable

68 Oxford Street
Whitstable CT5 1DG
Tel: 07831 210139



Offering a good selection of antique garden ornaments and Gustavian furniture



The Antiques Barn, Bethersden

Ashford Road
Bethersden TN26 3LF Tel: 07708 759581
www.antiquesandfurniture.co.uk



An eclectic mix of antique/vintage/retro/salvage and more. Full & partial house clearance service.



The Potting Shed, Folkestone

34 Rendezvous Street
Folkestone CT20 1EZ
Tel: 07967 006696

www.thepottingshed.shop

Sourcing beautiful antiques and original objects for your home and garden.



Workshop Number 29, Folkestone

29 Rendezvous Street
Folkestone CT20 1EY
Tel: 07956 785661



Offering a good selection of architectural salvage and beautiful things for your home and garden.




The Antique Oak Flooring Company

Willow Court Farm

Bilsington Road

Ruckinge

Ashford TN26 2PB

Tel: 01233 659508/07733 263540 

www.reclaimedflooring.co.uk

Experts in the reclamation & supply of Antique and Reclaimed flooring for period restoration and contemporary design.



Old English Tools

Standard Quay

Faversham

ME13 7BS Tel: 07796 343722

Tel: 01622 859676



Tools old and new bought for cash. Workshops cleared. Bench planes, chisels, axes, bill hooks, froes, draw shaves, side axes and garden tools



Symonds Salvage Ltd

Colts Yard

Pluckley Road

Bethersden TN26 3DD

Tel: 01233 820724



A treasure trove of reclaimed building materials, antiques, bygones & collectables.



Fabulous Nellies

97 Sandgate High Street

Sandgate

Folkstone CT20 3BY

Tel: 07799 730994



The home of eclectic antiques & decorative collectables French furniture and more.



OLIVER MANNING PRESS

CABINET MAKER, FURNITURE
DESIGNER & ANTIQUE RESTORER

BESPOKE, FREESTANDING AND FITTED
FURNITURE MADE TO ORDER



For more information contact:

01227 731765 or 07808 001844

olivermanningpress@gmail.com

www.olivermanningpress-bespoke.com

WAREHAMS

Antique Garden Ornament - Gustavian Furniture

68 Oxford Street - Whitstable CT5 1DG

Mobile: 07891 210139

www.warehams.com



Georgian Brickwork

Specialists in
Conservation & Heritage Brickwork

Skilful repairs to listed & period properties
using

traditional methods and materials

Charles: 07732 975 349

www.georgianbrickwork.co.uk

Find us on
Facebook



Old English Tools



Bench planes, chisels, felling axes,
bill hooks, froes, draw shaves,
side axes, early garden tools,
blacksmith tools, pine boxes.

Cast iron log burners
and fire grates.

Tools old and new bought
for cash. Workshops cleared.

Open now at
Faversham Standard Quay
ME13 7BS

5-7 days a week

Call Phil on 07796 343722



SCRAP METAL RECYCLING

Polite & friendly service

Fully licensed

Clearance of all metals

Unfortunately we cannot take fridges or freezers

Jason 07840 081990

7 days a week



THE BARN



The Antiques Barn BETHERSDEN

Over 3,000 sq ft of the stuff you didn't know you wanted!!!

As well as the stuff you do!

Open 7 days a week 10.00 - 4.30.



Greenway's Garden Centre, Ashford Road, Bethersden, Ashford, TN26 3LF

Telephone: 07708759581



WE PROVIDE A FULL OR PARTIAL HOUSE CLEARANCE SERVICE



BREDGAR

Antiques • Retro • Cool junk

ME9 8EX

Open 10am-4pm

Thursday to Saturday



The Old Cold Store, Bredgar Farm Shop, Bredgar ME9 8EX

We provide a full or partial house clearance. Tel: 07925 309228 or 07940 708128

Chimenea, £169.99
Dobbies



Garden coffee table, £99
Marks & Spencer



Handmade bird feeder
www.ethiqana.com



Outdoor cushion, £14.99
www.beanbagbazaar.co.uk



House sign, £43
www.selene-signs.co.uk



Salsa rattan solar lantern,
£20, John Lewis

lifestyle

INSPIRING IDEAS FOR YOUR HOME



Cluster of granite globe lights, £109
Stone Globe Lights
www.stoneglobelights.co.uk



QuanQuandro, £2141,
www.cuckooland.com



Rainblow plant pot, £22
Red Candy
www.redcandy.co.uk



Rattan planters from £49
Neptune www.neptune.com



Waterproof picnic blanket, £60
www.tartanblanket.co.uk



Wooden planter, made to order by
Oliver Manning Press
www.olivermanningpress-bespoke.com



Dartmouth
outdoor light,
£105, Neptune



Orange hammock, £149.99
www.vivalagoon.com



Glass & wicker jug, £34
Ella James
www.ellajames.co.uk



Gardening gloves, £14.95
Annabel James
www.annabeljames.co.uk



Bohemian outdoor rug, £35,
Talking Tables, www.talkingtables.co.uk



Parma corner sofa, table and stools,
£995, Lenleys, www.lenleys.co.uk

A reputation built on quality
craftsmanship and service

*Karl
Terry*

Roofing Contractors



Kent Peg Tiling & Listed Building Specialists.
Conservation and renovation specialists.
High quality work by experienced craftsman.
National Award Winning Company.

01797 270 268 | kentpegs.com





TALENT WILL OUT

LOUISE TOMLIN TALKS TO KARL TERRY ABOUT TWO THINGS THAT ARE EXTREMELY CLOSE TO HIS HEART - HIS LOVE OF ART AND HIS PASSION FOR SPECIALIST CONSERVATION ROOFING WORK.

The choices we make in our early years take us in certain directions and shape us into the individuals we are today.

Those choices can be the result of someone either encouraging us to reach for the stars, or maybe by them urging caution so we travel a more earthbound journey. A journey that in itself could still bring rewards but may come at the cost of a talent thwarted that should be realised and given the freedom to blossom.

As a teenager Karl Terry loved art. Painting and drawing were what made school bearable. He very much wanted to go to art college when he left school, but although his parents and art teacher recognised he had ability he was





Above: Mansion in Surrey

persuaded to take a proper job, one that would give him a reliable income and some security. So he joined his father's building company and soon realised that it was Kent peg tiling that he enjoyed most, as it was interesting and challenging. His keen eye for detail enabled him to learn the skills quickly, and working alongside time-served tilers and Kent peg experts he found his niche and never looked back.

Karl started his own roofing business in 1993 and readily admits that it wasn't all plain sailing. He says he remembers making some mistakes early on: running a business is like any challenge in life, if you mess up you do your best to put it right and learn from it, then you carry on. Persistence has certainly paid off, as the company is multi award-winning,

Below: The Cloth Hall, Smarden



with accolades such as the 'Outstanding Contribution to the Roofing Industry Award' in 2015. He has also been awarded Master



Craftsman status by the Worshipful Company of Tylers and Bricklayers and is an NFRC Heritage Roofmaster, amongst his many other honours.

It's clear from talking to Karl that he is a modest man by the way he mentions that although he is proud of the success, he is also slightly embarrassed by the plethora of awards his company continues to acquire. What is also clear is that he has a passion for the work he and his team are involved with. A large proportion of this, at least 90%, is heritage and specialist conservation work.

Since forming Karl Terry Roofing Contractors over 28 years ago he has assembled a hand-picked team that has built up an enviable reputation for high quality, sympathetic and successful restoration work that has safeguarded many historic buildings

throughout the south-east of England, and even as far afield as Florence. The majority of his team has stayed working with him for more than ten years.

"We always keep in mind that the buildings we are privileged to work on are hugely important to our national heritage, remaining acutely aware of the historical significance especially when carefully disassembling the work of the original craftsmen who have built a structure several hundreds of years ago. Authenticity is paramount in the reconstruction process and the materials we use, like genuine lime mortar and traditional tiles. It's great there has been a revival with several firms making traditional Kent peg tiles and fittings again."

The team love a challenge, the more complex and interesting the better. It's apparent they have a huge amount of experience from looking



at the portfolio images on the website of examples of tiled roundels, laced or swept valleys, eyebrows, mansard roofs, mitred hips, all wonderful terms for a trade that is steeped in tradition and that evoke a great sense of history.

There's an interesting twist in this tale that takes us back to the beginning of the story and Karl's love of art. In 2005 he was called by Chris Daynes to do some roofing work on his house. Chris was Karl's art teacher at school. Whilst work progressed on Chris's roof he encouraged Karl to try painting again, which he did. He started painting en plein air, which translates as 'in the open air'. It's a practice that



was favoured by the French Impressionists like Monet, Pissarro and Cezanne, who wanted to paint the effects of light and its changing ephemeral qualities in landscapes or cityscapes in all weathers.



“My work is an immediate response to what I see and feel when immersed in the ever-changing landscape. This process has opened my eyes to the beauty that can be found everywhere, even in the mundane. Going back to art has been a revelation to me,” he says.

Rekindling his passion for painting wasn’t a momentary whim. After starting again 15 years ago he hasn’t stopped, any spare moment he gets he is outside with his easel and he’s travelled extensively creating wonderful paintings that are his personal response to the light and landscape in many different countries. It is not surprising when you look at the results to hear of the success that has followed. The startlingly beautiful paintings are full of energy, with wonderful colours that invoke the atmosphere of light reflected on water, spellbinding skies, deft brushstrokes that conjure up distant structures, all taking you into a moment in time that is captured in the works.

There’s no doubt that Karl Terry the artist has made up for lost time: success followed just a couple of years after he picked up the paintbrush again in the shape of multiple

exhibitions at prestigious venues such as The Royal Society of British Artists, The Royal Society of Oil Painters and The Wapping Group of Artists show. He’s no stranger to awards in this area either, recognition of his accomplishment as a painter have come from The Royal Society of Marine Artists awarding him Associate membership, and as the winner of the Red Rag award.

Karl Terry, whether it’s the artist or the roofer has a refreshingly simple approach to life and work. He says, “I enjoy life and I like people, and I like to make people happy, especially my customers.” And customers in either sphere are plentiful, so he’s definitely doing something right. Maybe it would be fair to say that his artistic talent that was suppressed many years ago and was diverted into a successful artisanal career has at last found an outlet. Or maybe it was his artistic gift, aesthetic appreciation and keen eye for detail that has made him the excellent craftsman and roofer? Whatever the case we salute you, Karl.

You can find out more about Karl Terry’s roofing at: www.kentpegs.com
or his painting at: www.karlterry.co.uk



MARTIN SHIRLEY

Bathroom & Home Renovations

Specialising in bathroom renovation,
tiling, plumbing, plastering,
electrics, home maintenance
and renovation within the
mid-Kent area for over 15 years

Free quotations available
All work fully insured

Tel: 07565 843931

E: martin10.shirley@gmail.com



Custom Made JOINERY

We offer professional joinery services
for domestic and commercial clients
throughout Kent.

With over 28 years' experience, we
use traditional methods of joinery to
deliver top quality products at very
competitive prices.

01227 752153



Visit our website

www.custommade-joinery.co.uk

S A Tyson Ltd

ARCHITECTURAL DESIGN SERVICES

Established August 2006

- Planning & Building Regulation Applications
- Article 4 & Listed Building Consents
- Traditional Joinery Detailing & Consultancy
- 2D & 3D CAD Design Services
- Virtual Reality Concept Designs



E: steve@satyson.co.uk

T: 07887 711143

49 Meadow Walk, Whitstable
Kent CT5 4PW



<https://satysonltd.business.site>

HOMework TIME

IF THERE IS ONE GOOD THING THE 2020 LOCKDOWN TAUGHT US IT'S THAT THE NEED TO GO INTO THE OFFICE WAS NOT AS GREAT AS WE THOUGHT.

With Government urging us to work from home if we possibly could, a new world opened up... a world where you can nip to the desk in seconds, be flexible on start times, and take your coffee break in the garden.

For many people in Kent, the daily grind of commuting to London suddenly seemed a quaint and unnecessary squandering of time.

It's a fair bet that for many of us, working life will never be the same again as employers realise that staff can be more productive from home: no more late arrivals, no more workers

arriving exhausted and frazzled by delayed trains or unexpected traffic jams.

You and your boss may decide that working from home is the new normal, so take some time to consider your personal ideal office. Creating a bigger and brighter space away from domestic distractions may involve converting an outbuilding, creating a bespoke garden room, or extending your home. Garden rooms can be standalone, converted from an existing outbuilding, or can create a bright and airy link between indoor and outdoor space as an extension to the existing home.





A T Palmer Ltd, a family building business based at Smarden, has a broad range of abilities and experience in these fields and a highly-skilled workforce covering all trades. Whatever the size or scale of the project, they say their attention to detail is only matched by their determination to provide a quality service.

What about rules and regulations? A T Palmer advise that a garden room suitable for office use under Permitted Development rights will need to fall under certain rules for size and not cover more than 50% of the original house's outdoor space. Its use needs to be classed as 'incidental', with no primary accommodation.

You will always require planning permission if your house is listed. Other rules vary between councils and are tighter in designated areas. A T Palmer can advise on individual cases, and they work closely with architects if drawings and full planning permission is required.

What are you waiting for? Let's get to work!

www.atpalmer.co.uk Tel: 01233 770077





HERITAGE BRICKWORK RESTORATION LTD

‡ Lime Mortar Specialists ‡

‡ Historic Brickwork Repairs
& Repointing ‡

‡ Gauged Brickwork ‡

Tel: 01227 264 737 Mob: 07866 388 962

info@heritagebrickworkrestoration.co.uk

www.heritagebrickworkrestoration.co.uk



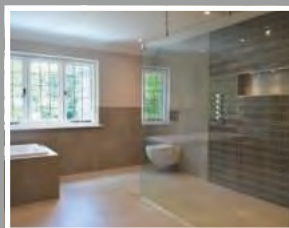
PETER JACKSON ARCHITECTS

Harbour Offices, Whitstable CT5 1AB

01227 770470

enq@peterjacksonarchitects.co.uk

EMPLOYED SKILLED WORKFORCE | RENOVATIONS & EXTENSIONS
CONVERSIONS & ALTERATIONS | DESIGN & BUILD



A.T. PALMER LTD

RESTORATION SPECIALISTS EST.1949

T: 01233 770077

Smarden Business Estate, TN27 8QL

atpalmer.co.uk



SPECIALISTS IN ROOFING



Canterbury Roofing and Building is a family-run business with over 35 years' experience working in Kent and surrounding areas. We have vast experience of conservation and other roofing works.

- Guttering
- Flat roofing
- Velux and sky lights
- Conservation work
- Tiling
- Pointing and chimney work
- Slating
- Lead Work



**FOR MORE INFORMATION
AND TO CONTACT US:**

www.canterburyroofing.com

Tel: 01233 647867

or 07976 325520

info@canterburyroofing.com

SAVING OUR HERITAGE

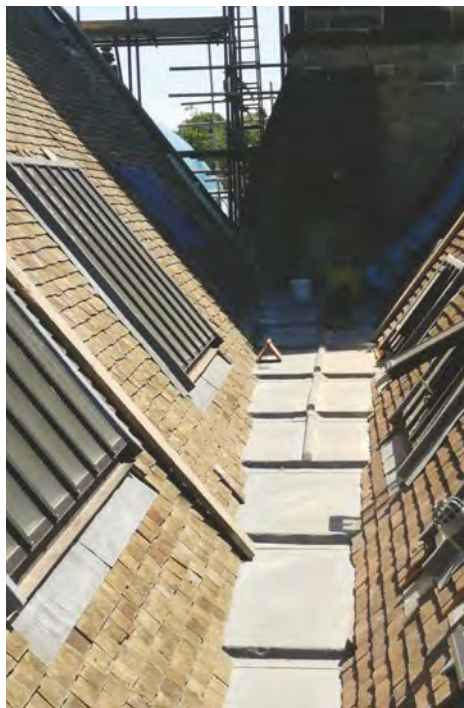
INTERVIEW WITH WAYNE WILLS OF ASHFORD AND CRANBROOK ROOFING

AS NEW LIFE IS BEING BREATHED INTO THE DISUSED ALL SAINTS CHURCH AT HAWKHURST, A LOCAL ROOFING FIRM IS ENSURING THAT THE BUILDING HAS A WATERTIGHT FUTURE.

The Grade 2 listed former chapel-at-ease in the Highgate conservation area was built by Gothic Revival architect Sir Gilbert Scott in 1861. Now, following 20 years of dereliction, it is being converted to residential use.

“The spire and roof were seriously dilapidated from the years free of occupation as well as some incidents of vandalism,” says Wayne Wills, of Ashford and Cranbrook Roofing.





The sandstone building's tower rising into a broach spire (having triangular faces at the base) is a notable local landmark. Work on the spire, using western red cedar shingles, began in July last year and took about two months. The main roofing work was expected to be completed this summer, having had to fit around other on-site development.

Wayne's brother John, a heritage roofer and master lead worker, has been the main man on the job. He was able to refit some of the existing clay handmade Kent peg tiles mixed in with some new ones.

"It was a complete overhaul of both spire and roof," says Wayne. "Work on the roof entailed

the addition of over-rafter insulation to enable exposure of as much of the original internal structure as possible.

"We also made bespoke lead surrounds to 23 cast-iron heritage-style rooflights, and we had a specially-made clay feature ridge sympathetic to the original appearance." He adds that in

situ stonework had to be maintained, and a scheme of work was agreed with local heritage consultants.

Ashford and Cranbrook Roofing is very much a family firm, founded by

Albert Edward Wills in about 1910. Wayne, now managing director, joined his father Derek in the business in 1994 and brothers John and Michael work with him. His son Harry is now

***"We are the only
fourth generation Kent
peg family in Kent"***



training as a heritage roofer in the craft of peg tiling. “The family business has been our lives and careers,” says Wayne.

Kentish peg tiling is a speciality of the firm, though they work with slate too. Kentish pegs are smaller than normal tiles, which means they require more care.

“We work on listed, heritage and buildings of outstanding beauty or importance and cover Kent and the surrounding counties. Among architectural colleagues we are known and respected, which gives us the pleasure of working on some of the county’s most beautiful ecclesiastical buildings.”

The company has won awards for its work, but Wayne is prouder of its community and customer reputation.

“Working on outstanding beautiful buildings of significant age, and helping to maintain them for future generations is all the reward we need. There is no better feeling than knowing you have saved a heritage building from dilapidation and ruin for future people to enjoy.”

**For more information follow their work on Instagram ([ashfordandcranbrookroofing](https://www.instagram.com/ashfordandcranbrookroofing)) www.cranbrookroofing.co.uk
Telephone: 01580 242925**





- Ecclesiastical work
- Flint work
- Heritage brickwork
- Lime pointing/render
- Fully insured
- New builds & extensions
- All work quoted for
- Traditionally trained craftsmen

Tel: 07856 266795

e-mail: conservation-construction@outlook.com



ASH
SCAFFOLDING LTD

Conservation
Scaffolding Specialists



Chartwell House, Kent

Smarden Business Estate, Smarden, Ashford TN27 8QL
Tel: 01233 770373 email: info@ashscaffoldingltd.co.uk
www.ashscaffoldingltd.co.uk

SJ MILWARD

Heritage Plastering (*Est.1976*)

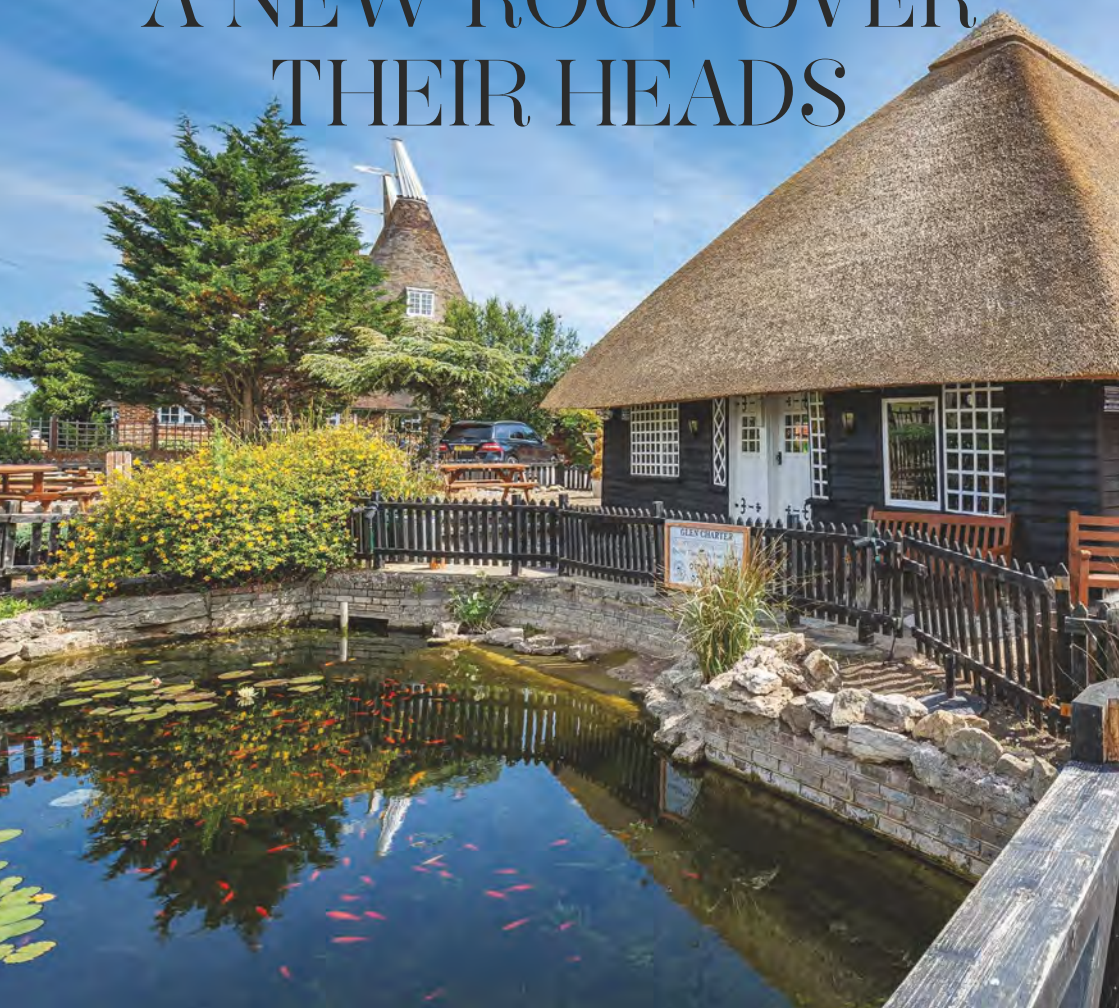


↻ Traditional & modern methods ↻ Listed Buildings & period properties
↻ Lime & hair work ↻ Restoration & conservation ↻ Interior & exterior



Tel: 07721 054949
sjmilward@hotmail.com

A NEW ROOF OVER THEIR HEADS



WE REVISIT THE CHESTFIELD BARN PUB AND RESTAURANT NOW THAT ITS CROWNING GLORY, A BRAND-NEW THATCHED ROOF, HAS BEEN COMPLETED.

Lockdown didn't stop master thatcher Glen Charter from completing a massive re-roofing job on the Chestfield Barn pub and restaurant near Whitstable.

Glen had already stripped off the worn-out thatch when the coronavirus pandemic

temporarily closed the Grade 2 listed pub, but he and his team were able to carry on fitting new wooden battens and covering them with water reeds. The roof area was big enough for his team of three, plus occasional extra help, to observe social distancing.



*Photos: Neil Brown - Kent Web Design
Photography Services - www.beamtventy3.co.uk*

“It was a fairly standard job, but quite a big one,” said Glen. “We fitted a waterproof membrane and new large-gauge battening to strengthen the structure. The old thatch was about 30 years old and the fixings were showing, which is a sign the roof had come to the end of



its life. If we’d just repaired it, that would not have lasted beyond 10 years.”

Working with owners Shepherd Neame, Glen looked at old photographs which showed that in the past the roof valleys had been tiled. It was decided to replicate this, to be true to the original and to make the roof more maintenance-friendly on these heavy-wear areas.

Shepherd Neame have two other thatched properties, Manor Farm Barn in Southfleet and The Boathouse at Yalding. “We tend to rely on Glen, as he is very skilled and has a wealth of experience,” said the brewery.

A regular maintenance programme involves re-netting and replacing the ridges around every 10 years. A complete re-thatch, as at Chestfield, is fairly unusual and can be prompted by a variety of factors; for example, a north-facing thatch seems to degrade more quickly, and sometimes



Originally a tithe barn, it was converted into a golf clubhouse about 100 years ago, then became a tea-room before Faversham-based brewery Shepherd Neame acquired it.

Managers Alan and Michelle Clark have been in charge for two years and arrange many regular events such as specialist food nights, quizzes and music.

Glen, who formerly worked in electronics, made the switch to thatching in 1988 when he trained in Reading. He had fancied working outdoors in a hands-on, niche trade and has never looked back, always busy even during the pandemic this year. "I have just been careful to pick jobs away from people," he said.

Having grown up in Faversham, he returned to the area to set up his own business in the village of Eastling 25 years ago. He covers the whole

of Kent from just over the county border at Rye up to the M25 and picks up business through his website and recommendations from happy customers.

He loves the achievement of completing something to be proud of. His final task on the Chestfield Barn was to add a pair of straw doves to the ridge. "That's my marker, so in 30 years' time people can see that and know that I did the job," he said. "I like that."

glencharterthatchingkent.co.uk
01795 890 822 or 07710 141 377

birds cause problems by pulling out thatch for nest-making, the brewery estates department said.

It took 4-5 weeks to strip off the old materials from the Barn, then about seven weeks to carefully install the new roofing, finishing in mid-April.

The popular roadside pub has stood for hundreds of years on the site of the Chestfield Manor complex mentioned in the Domesday Book and at one time belonging to Bishop Odo, half-brother of William the Conqueror.





GLEN CHARTER MASTER THATCHERS

Quality thatching in reed and straw
Free quotations and advice

Tel 01795 890822 or 07710 141377
email: glenthatch@hotmail.co.uk
www.glencharterthatchingkent.co.uk

Anthony Swaine ARCHITECTURE LTD

Conservation • Design Consultancy • Listed Buildings
Urban Design • Joinery Detailing • Traditional Shopfronts



Initial consultation undertaken
free of charge

Specialising in traditional design & works to
historic buildings; timber framed structures; &
new buildings in the historic context

The Bastion Tower,
16 Pound Lane,
Canterbury,
Kent CT1 2BZ

Tel: 01227 462680
mail@anthonyswaine.co.uk
www.anthonyswaine.co.uk



CONSULTATION AND CRAFTSMANSHIP FOR THE CUSTODIANS OF HISTORIC BUILDINGS



**DOLMEN
CONSERVATION**

DOLMEN-CONSERVATION.CO.UK
01233 746212 / 07804 881461
PROJECTS@DOLMENCONSERVATIONLTD.CO.UK



Ratling Court, Canterbury

A FASCINATING AND RARE GRADE I LISTED MANOR HOUSE DATING BACK TO 1320. SET IN 4.7 ACRES WITH ITS OWN 18TH CENTURY THATCHED DONKEY WHEEL HOUSE, AN OAST HOUSE, BARN AND STABLES

Ratling Court is an historic Grade I listed house of considerable architectural importance with a remarkable and intriguing history.

The main house was built for the de Ratling family in 1320 with later additions in the 15th and 17th centuries. It was the former home of Sir William Cowper, whose son became the first Lord High Chancellor of Great Britain in the 18th Century. Sir William rebuilt the south wing in the 17th Century and added the great fireplace and upper floor in the old hall, which has a king post roof (one of very few in existence in Kent).

The day-to-day entrance opens to the large

farmhouse style kitchen, complete with a walk-in pantry, a utility room and a cloakroom. The drawing room is a warm, relaxed space with an impressive inglenook fireplace; sitting at the heart of the property, it is the oldest part of the house with a wealth of period features. A bright dining room, with two store rooms off it, is accessed from the kitchen. A snug, study and sitting room complete the ground floor accommodation. A cellar sits beneath the snug with a staircase from the study providing access. The main staircase rises to the first floor landing.

The master bedroom has fine views over the large pond at the front of the house. The



vendors have utilised the adjoining bedroom as a generous dressing room. A secondary staircase also provides access to this room.

There are three further double bedrooms (two with en suites) and a family bathroom with porcelain rolltop bath and shower. There is also a large attic, extending the length of the house, accessed through the current dressing room.

All the rooms benefit from fine views over the grounds; a number of large sash windows allow natural light to flow through the house.

The gardens and grounds provide a great deal of privacy with beautiful mature trees and natural areas throughout, creating a wildlife haven for a variety of animals and birds. There are two orchards, a vegetable patch and an array

of outbuildings, including a thatched barn (with lapsed planning consent for conversion to holiday let accommodation), stabling and a substantial oast house (used as garaging and storage), all with great scope for a range of uses.

The drive leads to a parking area by the main house and oast. An ice house sits below the courtyard. The oast house above the garage has a large double height room, giving potential for an annexe subject to any necessary consents.

The fascinating donkey wheel house has a thatched roof and was installed in the 18th century to provide water for the manor house; it is now used as an entertaining space and is ideal as a cool, shaded area to escape summer sun.

- FEATURED PROPERTY -



The Details

Entrance hall | Drawing room | Sitting room
Snug | Study | Dining room | Kitchen/breakfast
room | Utility | Pantry | Cloakroom | Cellar
Master bedroom with dressing room | 3
further bedrooms (2 en suite) | Family
bathroom Boiler room | Donkey wheel house/
thatched entertainment space | Garden |
Stables | Kentish barn | Garage building |
About 4.7 acres. Private accompanied viewing
strictly via Strutt & Parker
2 St Margaret's St, Canterbury CT1 2SL
struttandparker.com Tel: 01227 473700
Price: £2,200,000

**MAKES
FOUR**



TALES & RECIPES *from the* KITCHEN GARDEN

*Now, everyone can enjoy The Pig from the comfort of their own homes.
Among the pages of The Pig you will find an idiosyncratic, seasonal approach to the good life,
with delicious recipes, how-to guides, tips, tricks and stories.*

MR BARTLETT'S HAMPSHIRE HOGS

YOU WILL NEED

100g breadcrumbs

Rapeseed oil

25g seasoning (roughly
20g salt, 5g sugar, and a
pinch each of sage, thyme
and garlic powder)

700g boneless pork shoul-
der (80% lean meat, 20%
fatty meat)

150ml cold water

Sausage casings



*Recipes from The Pig: Tales and
Recipes from the Kitchen Garden and
Beyond by Robin Hutson, published in
hardback by Octopus Books.*

METHOD

Fry the breadcrumbs in a pan with a little oil until golden brown, then mix with the seasoning. Mince the meat straight onto the breadcrumbs (if you don't have a mincer, pulse in a food processor) and mix, adding the measured water. Mince again. Tie one end of a long sausage casing with string, then insert the narrow part of a wide-necked funnel in the other end. Using the back of a wooden spoon, push the meat through the funnel into the skin. Once it's full, remove the funnel and tie the end with string. Pinch and twist into 4 individual sausages, then link and tie with string (each sausage should weigh about 200g).

Put in the refrigerator overnight. For the best flavour, cook over charcoal.

WITH A FENNEL TWIST...

For The Pig's take on Mr Bartlett's Hampshire hogs, use the same ingredients but punch things up a bit by adding fennel pollen (otherwise known as 'spice of the angels') and elephant garlic.

Fennel pollen is the tiny dried heads of wild fennel flowers. The Pig's kitchen garden grow their own but you can buy it online. The flavour of elephant garlic is somewhere between garlic and leek – adding an extra kick to your hogs. If you can't find any, normal garlic works fine.

GOOSEBERRY TARTLETS

There are three elements to this recipe – the stewed fruit, the tart base and the honey clotted cream – and the great thing about each is that you can use them in lots of different recipes. The fruit, for example, is deliciously sharp and tangy; stir a few spoonfuls into whipped cream for a quick gooseberry fool, or spoon over yogurt for breakfast. And then you have the ultimate sweet pastry recipe, which is super-useful. Add orange or lemon zest, cocoa or spices to create different flavours, depending on your filling. Also, when you make the individual tartlet cases, roll them as thinly as possible.

YOU WILL NEED

FOR THE PASTRY

190g soft butter, plus extra for greasing

170g sugar

2 eggs, lightly beaten with a fork

375g plain flour, plus extra for dusting

FOR THE COMPOTE

500g gooseberries, topped and tailed

200g caster sugar

50ml elderflower syrup or cordial

FOR THE HONEY

CLOTTED CREAM

250g clotted cream

2 teaspoons local honey

TO GARNISH

Edible flowers

METHOD

For the pastry case, combine the butter and sugar in the bowl of a food mixer or processor with a paddle attachment. Keeping your mixer on the lowest setting, gradually add the beaten eggs. Then start mixing in the flour. Don't over-mix, as your pastry will crumble when you try to roll it out. Tip onto a work surface and finish binding together by hand. Wrap in clingfilm and leave to chill in the refrigerator until firm.

Preheat the oven to 200C/180C/gas 6 and lightly butter 6-8 tartlet tins (about 10cm in diameter). Remove the pastry from the refrigerator. Lightly flour a work surface and roll the pastry out to a thickness of 2mm. Use to line the tartlet tins. Line the pastry cases with greaseproof paper and fill with baking beans. Place on a baking sheet and bake for 15 minutes. Remove the paper and beans and return to the oven, uncovered for a further 3 minutes. leave to cool, then remove the pastry cases from the tins.

FOR THE FILLING

Put the gooseberries in a wide pan, add the sugar, enough water to cover and the elderflower syrup. Warm to gently dissolve the sugar. Turn the heat down to low. Cook gently for 5 minutes, being careful not to break up the fruit. Take off the heat and leave to cool.

Whisk the clotted cream in a bowl and stir in the honey, for a hint of sweetness. Spoon the cream into the pastry cases and add the gooseberries on top. Drizzle the syrup around the edge and garnish with edible flowers, if you have them.

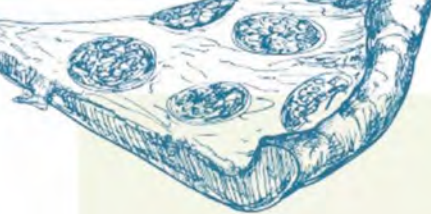
SERVES
6-8



WIN A COPY OF THE BOOK



For your chance to win a copy of *The Pig: Tales and Recipes from the Kitchen Garden and Beyond*, please email your name, address and telephone number to dawn@cnkent.co.uk. Closing date for entries is Friday 11th September 2020. Good luck!



Papà Bianco

**NOW
OPEN!**

**RESTAURANT
AND TAKE
AWAY**



**STANDARD
QUAY
ME13 7BS**

☎ 01795 530488

📘 @papabiancofaversham

📷 @papabianco_



CHILHAM SHOP

Farm shop & plant centre

Canterbury Road, Chilham CT4 8DX

Tel: 01227 730348 | chilhamshop.co.uk

FREE LOCAL DELIVERIES

Serving Chilham and the surrounding villages for over 35 years with a wide range of fresh, fruit, vegetables, cut flowers, garden plants as well as a good selection of general groceries, dairy, bakery, frozen foods and much more.

Mon to Sat: 8:30am to 6pm Sun: 9am to 5pm. And Chilham Post Office



FREE DELIVERY to Chilham and neighbouring villages



LOWER HARDRES FARM SHOP

**PICK
YOUR OWN**
Call for details

- In-house butchery selling chickens, local game, pork, beef and lamb
- Dried fruits, nuts, seasoning and spices
- Home-reared spring lamb
- Fruit, vegetables and salad, sourced as locally as possible
- Cheese and deli products
- Stockist of The Chai Stop finest curries
- Skinners dog food
- Local wines and ciders
- Selection of bedding plants



www.lowerhardresfarmshop.co.uk Tel: 01227 700947 email: info@lowerhardresfarmshop.co.uk

Lower Hardres Farm, Lower Hardres, Canterbury CT4 5NU



**DINE IN
FROM
JULY 4TH!**

MACKNADE ELWICK PLACE

GROCER | DELICATESSEN | DINING
IN THE HEART OF ASHFORD

www.macknade.com

01233 434096

VISIT US NOW AT... NO.1 ELWICK PLACE, ASHFORD, TN23 1AE



The image shows two plates of food. The foreground plate features a risotto topped with a piece of pan-seared fish, a lemon wedge, and a generous amount of shaved parmesan cheese. The background plate contains a serving of asparagus spears, also garnished with lemon slices. A small green circular sticker with the text 'SERVES FOUR' is placed on the upper left of the asparagus plate.

**SERVES
FOUR**

CATCH OF THE DAY!

Who's hungry? We have a delicious recipe courtesy of our favourite Kent foodie destination, Macknade, to celebrate the opening of their brand new Fish Butchery. Pay a visit to their Flagship Food Hall to pick up fish and seafood from wholly sustainable sources... as fresh as it's going to get!

RISOTTO AL LIMONE WITH PAN FRIED PLAICE

YOU WILL NEED

For the risotto:

60g butter
1 tbsp extra virgin olive oil
2 finely chopped shallots
1 finely chopped celery stick
300g arborio rice
800ml chicken stock, or veg stock
200ml white wine
1 good, unwaxed lemon
6 sage leaves
Sprig of rosemary
1 tbsp chopped fresh dill
1 egg yolk
4 tbsp grated parmesan
4 tbsp double cream
Sea salt & cracked black pepper

For the fish:

4 fillets of white fish
Plain flour for dusting

METHOD

Lightly dust your fish fillets in flour and set aside. Heat half the butter with the olive oil to a medium heat and sauté your shallot and celery mix for approx. seven minutes until soft.

Add the rice and continue to cook, stirring frequently, until the grains are somewhat translucent. Add 200ml of white wine and cook until absorbed by the rice, stirring frequently. Add 150ml of stock and cook until absorbed by the rice, and continue to add stock as it is soaked up, stirring frequently. (You may not need all of the stock, or you may need to add a little more hot water if you run out – risotto rice takes approx. 20 minutes to cook, so you can play this by ear.)

While the rice is cooking, chop your sage and rosemary, as well as zesting half of your lemon and add to the rice when you're about half way through.

In a small bowl, mix your egg yolk, cream, the juice of half the lemon and parmesan, as well as a good grinding of black pepper.

When the rice is al dente remove it from the heat and stir in the mixture before placing the lid on tightly and leaving to rest for a couple of minutes. During this time, heat a little butter and oil in a frying pan to a medium-high heat and fry your fillets for two minutes on each side – the fish is very delicate, so take care when turning it over.

Give the rice a good stir, taste for seasoning and adjust if necessary. Serve with the fish on top and a fresh green salad on the side.

To make a simple vinaigrette, mix two teaspoons of dijon mustard with 2 tbsp of red wine vinegar and 6 tbsp of extra virgin olive oil.



OPENING TIMES
Lunch: Tue - Sun 12 noon - 2.30pm
Evenings: Tue - Mon 6pm - 9.30pm



Birdies is one of Whitstable's oldest family run restaurants, serving brilliant locally caught fresh fish features alongside great French classics.

41 Harbour Street, Whitstable CT5 1AH Tel: 01227 265337
www.birdiesrestaurant.co.uk



Bull Green,
Bethersden TN26 3LB
Tel: 01233 822463
Email: Shop@BullGreenFarm.co.uk

We are a family-run farm rearing Dexter cows, sheep and chickens. We believe animals should be able to roam free in the fields and enjoy fresh air and green grass.

We have a nicely stocked shop with fresh eggs daily, home grown veg, and a variety of local products such as Kentish honey, jams, and occasionally freshly baked cakes. We also have a freezer packed with locally made pies and tasty treats.





HOW HAS COVID-19 AFFECTED KENTISH VINEYARDS?

ROWENA HAWTIN AT DISCOVER THE VINE INTERVIEWED SIX VINEYARDS BASED IN KENT TO GET THEIR PERSPECTIVES

Biddenden, Chartham, Gusbourne, Simpsons, Terlingham and Woodchurch vineyards talk about how they have been affected by Covid-19 and how they have adapted their businesses as we come out of lockdown and ease back into normal life.

IN THE VINEYARD

Common to all the vineyards, managing the vines has been of primary importance and whilst some of the vineyards completely rely

on family members to tend the vines – others have retained their employees where their role is vineyard based. However, this has been kept to a minimum and a number of employees have been furloughed to ease the financial pressure. The good news is that on the whole, the weather has been sunny and dry and although one or two vineyards said there had been some frost during this period, the damage to the vines was minimal.

TOURS AND TASTINGS

Without a doubt – due to lockdown – all tours and tastings ceased with immediate effect.

Cellar door sales are a major part of revenue for Kent vineyards – especially for the smaller ones.

There really is no substitute for being in the environment where the grapes are grown and enjoying the whole wine tasting experience.

SALES

On the positive side, all of the vineyards stated that they'd seen a significant increase in online sales with Chartham vineyard just launching this service in May 2020.

At Gusbourne, as well as their sparkling wine, they have just launched their 'Cherry Garden' rose and Simpsons have just released the Flint Fields Blanc de Noirs 2016 which has been so popular that it has sold out, but the 2017 is due for release in November 2020. Terlingham are launching their 2019 vintages of their flagship wine made from Bacchus as well as their rosé wine made from Rondo and Dornfelder due for release around mid July.

Biddenden and Woodchurch vineyards have also recorded increases in online sales and although these sales don't compensate for the losses of the vineyards closures they all agree that they are retaining their current retail customers as well as attracting new ones – both locally and further afield.

ON TRADE

It isn't just cellar door sales that have been affected as the enforced closure of all bars, pubs, restaurants and hotels – the whole hospitality sector has had a direct impact on the vineyards. Many of these organisations are trade customers and of key importance, not only in supply, but also in terms of increasing their visibility and reputation in the wider community.

There is a collective concern as to how some of these will manage in the future as the hospitality sector will be one of the last to come out of lockdown, and at the time of writing it is uncertain how they will trade in the post Covid world.

A positive





aspect of the effect of Covid-19 has been in the growth of community spirit among people in the local vicinity. People have gravitated towards using local suppliers to a greater extent than before in preference to queuing up at the local supermarket and it is hoped that this will continue not only for wine but for local Kent produce as well.

WHAT DOES THE FUTURE LOOK LIKE?

At the time of writing it is difficult to predict with any certainty the way forward for local vineyards but most will be open by mid-June/early July for visitors to have picnics in the grounds.

The shops will be open to purchase wine – but full scale wine tasting will be unlikely as social distancing and cleansing glasses will be very difficult to enforce in the tastings areas.

Terlingham are hoping to offer picnics from July onwards with pop-up gazebos; Simpsons already have rigorous social distancing measures

in place for their employees which will be extended to customers when they re-open as safety is paramount – which all the vineyards take very seriously. Gusbourne are hoping to do something similar in the way of picnics, and Biddenden will be opening their shop to customers for purchase only. Woodchurch wines were due to celebrate their 10th birthday this year and had opened their cellar door in preparation for this celebration. However their shop is now open for visitors. Chartham vineyard have been working hard to build up their art exhibitions which visitors can enjoy as well as tasting their wines and this will resume as soon as it is safe to do so.

Although the complete impact of Covid-19 on the Kent wine industry and the wider hospitality sector is at present unknown, it is important that we continue to support our local businesses and communities as we begin the journey back to a more normal environment.

BIDDENDEN VINEYARDS

Biddenden Vineyards celebrated its 50th anniversary in 2019. The family is able to draw on five decades of winemaking knowledge and pair this with new methods and techniques to ensure that Biddenden is at the forefront of the English wine industry.

Taking online orders

The shop and walks remain closed in line with government advice.

www.biddendenvineyards.com



CHARTHAM VINEYARD

Chartham Vineyard is owned by Dr Roz Waller and her husband Richard Goodenough and managed by their son, Andy. They offer deliciously fine wines made from grape varieties and rootstocks that are ideally suited to our soil, terrain and cool maritime climate.

Taking online orders

The shop and vineyards remain closed in line with government advice.

www.charthamvineyard.co.uk

GUSBOURNE VINEYARDS

A combination of the best age-old traditions with modern technology and cutting-edge equipment allows us to sit comfortably between old and new world winemaking, while at the same time bringing our own exacting quality standards to the process.

Taking online orders

The Tasting Room is currently closed.

www.gusbourne.com



Gusbourne vineyards wish to thank:-

MACKNADE FINE FOODS www.macknade.com

PRESS WINE SERVICES AT THE GOODS SHED www.presswineservices.com

THE SECRET CELLAR www.theseecretcellar.co.uk QUERCUS WINES www.quercuswines.co.uk



TERLINGHAM VINEYARD

Small but mighty! With just four acres of vines, Terlingham make between 2,000 and 4,000 bottles of wine a year and are all about being as low impact, sustainable and eco-friendly as possible. The family of five does everything on the vineyard themselves, by hand.

Taking online orders - contact free deliveries

The shop and vineyards remain closed in line with government advice.

www.terlinghamvineyard.co.uk

WOODCHURCH WINE

Set on hills looking south over the ancient Romney marsh down to the English channel, our land has the perfect geography and climate to produce the highest quality grapes and the finest English sparkling wine.

Taking online orders

The vineyard is currently closed.

www.woodchurchwine.co.uk



SIMPSONS WINE

At Simpsons, we believe that the finest wines convey a rich sense of provenance and integrity, firmly rooted in the characteristics and exquisite nuances of their terroir. This is why we settled for nothing less than the finest parcels of land in southern England to plant the vines for Simpsons' exceptional English sparkling wine.

Taking online orders

www.simpsonswine.com

If you have any questions about this article or any other enquiries – please visit **www.discoverthevine.co.uk**
Rowena Hawtin #thewinelady

We wish to thank:-

Gibson's Farm Shop; Clive Barlow at the Goods Shed; Macknade Fine Foods; Barham Village Store; Filberts; The Strand Wine Company; Squerries Flint and Oak Deli

COPPERS BISTRO

Café ✦ Kitchen ✦ Bar



Coppers Bistro are happy to announce following Government guidelines we will be re-opening indoor and outdoor spaces from **Saturday 4th July at 9.00am**

- New breakfast, lunch and Sunday menus now available
- Coppers Cream Teas
- Orders taken up to half an hour before closing
- Call for reservations to avoid disappointment.



- Fully licenced
- Opening hours
Friday & Saturday
9.00am - 5.00pm

Sunday-Thursday
10.00am - 4.00pm
- Local beers, wines
and juices



The Street, Preston, nr Wingham, Canterbury CT3 1ED

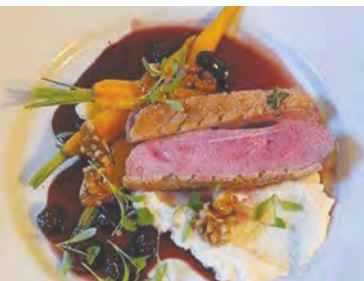


Tel: 01227 728580





The White Horse Inn



Locally sourced food served 7 days a week

Good selection of beers, wines & gin | Family-friendly & dogs welcome

Lovely, friendly staff | Parking | Available for events

53 High St, Bridge, CT4 5LA | 01227 833830

email:dine@whitehorsebridge.co.uk | www.whitehorsebridge.co.uk

A different perspective

Some furniture is made for the here and now. Some is built to stand the test of time.
At Neptune, we believe it can do both – look good, and wear well.

Because good design never gets old.

Neptune Canterbury, 01227 209300 Neptune Tonbridge, 01732 351866
neptune.com




NEPTUNE