

CONSERVATION NEWS

Kent

Autumn 2021 • Complimentary

Old Smock Mill
a stunning windmill
renovation in Kent

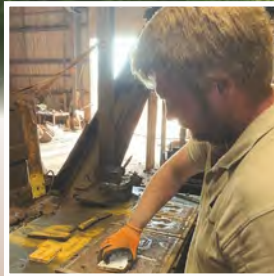


JULIA BRENDEL

COTTAGECORE
Get the look

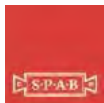
Ashford & Cranbrook RoofingTM

— Experts in heritage roofing —



Now producing hand-made clay Kent Peg tiles for our customers

www.cranbrookroofing.co.uk



Tel: 01580 242925

STANDARD QUAY

FAVERSHAM

Faversham's
hidden gem!
Visit today!



Enjoy Faversham's Living History and Creekside

✳ *Kentish Waterside Attractions and Thames Barges*

✳ *Secret Gardens Tearoom*

'Delicious home-made food using locally sourced produce'

✳ *Papa Bianco Pizza Restaurant*

✳ *Wine Bar and Comedy Club*

✳ *Duck and Blade Butchers*

✳ *Herman's Plaice Fishmongers*

✳ *Cambria Barge Exhibition*

✳ *Aladdin's Loft*

Indoor Antiques & Collectables Market

✳ *Old English Tools*

✳ *Quayside CrossFit Gym*

- *Salt & Spice / Peel & Pips*
- *Worldwide Spices and herbs / Fruit and Vegetables*
- *Pawzativity – Dog Supplies*
- *Characteristic Furniture Stores*
- *Actively Alive Yoga*
- *Surrey Bike Hire*
- *Car wash*

Wonderful destination and
charming day out.



FREE CUSTOMER PARKING. FREE WI-FI

Keep up to date on Facebook 

Enquiries: 01795 532453

Standard Quay,
Faversham ME13 7BS

WWW.STANDARDQUAY.CO.UK

The Antique Oak Flooring Company

SPECIALISTS IN ANTIQUE AND RECLAIMED FLOORING



VIEWING BY APPOINTMENT

Willow Court Farm, Bilsington Road, Ruckinge, Ashford, Kent TN26 2PB

T: 01233 659508 M: 07733 263540 www.antiqueoakflooring.com

Welcome Autumn 2021



Ah autumn: the leaves are turning, the air is crisp and there's a touch of frost in the early morning.

This is a time for long walks and muddy boots, for hot meals and getting warm by the fire, for cuddling up and settling down; and what better way to settle down than with our latest edition!

This quarter we're getting the garden ready for winter, starting those Christmas preparations and thinking about home improvements.

Autumn is the perfect time for making your house a home: with the children back at school and the weather still bright enough to work outdoors (we hope), you've got all the time and space you need to take on that special project or renovation that will revolutionise your living space.

We've got lots of articles to inspire you, plus gardening, local news and more – so grab that cuppa, put your feet up, and get ready for an Amazing Autumn!

Dawn



CONSERVATION NEWS
conservationnews.co.uk

Publisher
Conservation News

Contributors
Rowena Hawtin
Liz Norton
Louise Tomlin

Design
Lynn Fasulo

Editor/Sales Manager
Dawn Long
Tel: 07725 732535
dawn@conservationnews.co.uk

Cover image
Julia Brendel Ltd
© Conservation News 2021

Printed in the UK by Pensord



If you receive your copy of Conservation News by Royal Mail and wish to opt out of our mailing, please send an email to dawn@conservationnews.co.uk

All rights reserved.
Reproduction of any part of this magazine is not permitted without written permission of the publisher.

The publisher accepts no responsibility of any loss or damage in respect of any product or service that may be advertised.



Copperfields

OF WHITSTABLE

Cookshop & Homewares Since 1956

Inspiration for your kitchen and home



Cookware • Homeware • Gifts • Bakeware • Furniture • Electrical • Cards

shop@copperfieldsofwhitstable.co.uk • www.copperfieldsofwhitstable.co.uk
93 - 95 High Street • Whitstable • Kent • CT5 1AY • Tel: 01227 273519

OPEN 7 DAYS A WEEK



Autumn 2021

Contents



- 10 **Autumn gardening**
What to do in the garden now

- 15 **How to care for...**
iron railings

- 20 **Knock knock**
We look at the fascinating
history of the door knocker

- 40 **Cottagecore**
Is domesticity the
new rock n' roll?

- 47 **To burn or not
to burn...**
Stoves without the eco impact

- 61 **Romney tweed**
Romney Tweed: a small local
industry with big ambitions

- 69 **Old Smock Mill**
The transformation
of a Kent windmill

- 86 **Traditional Kenish fayre**
From apples to oysters...
our favourite local dishes

- 90 **Jane Austen's table**
Two lovely recipes inspired by
the works of Jane Austen

- 98 **Local farmers markets**
Buy local seasonal produce

- 104 **Rowena's wine column**
Simpsons vineyard and wines



THE GARDEN CREATIVE

SARAH MORGAN

07725055701

sarah@thegardencreative.com

www.thegardencreative.com

Design

Landscaping

Planting

After-care



@thegardencreate

Award-winning Garden Designer



NEED SHELTER OR SHADE?



VERANDAS, AWNINGS AND CARPORTS

Supplied and installed. Call for a free quote today!

SBI Ltd est. 1998 – Most installations completed in a day!

Awning servicing, repairs, cleaning and replacement parts.



CALL NOW 0800 0742 721 sbiproducts.co.uk

BJ CESSPOOL SERVICES LTD



If you want someone who is reliable, careful and efficient to empty your cesspool, septic tank or treatment plant please call Barry or Fiona Spicer.

- Emergency blockages
- Septic tank clearance
- Cesspool maintenance
- Treatment plant maintenance

We can help you with your home, rental properties, caravan parks, hotels and in fact any property that is not on main drains.

A jetting service can also be provided.

Tel 07796 282864 or 01233 624017
www.bjcesspool.co.uk

Professional Roof, Patio & Driveway Cleaning



Are you looking for a trusted, reliable and committed company to revive your property? ProTeam Cleaning are a 5 star rated, Checkatrade approved, Kent based, family owned, family run business that specialise in high quality, professional exterior cleaning.

Our services include:

-  Patio & Driveway Cleaning, with an option for high quality, weatherproof protective sealants
-  Roof Cleaning and Moss Removal, all completed without ever stepping foot on your roof
-  Fascia, Soffit and Weatherboard Cleaning
-  Gutter Clearing, Repairs & Full Re-installations



07541 757 383
www.proteamcleaning.co.uk

Checkatrade.com
Where reputation matters

Google
Reviews ★★★★★

FIND US ON
  



PLANT IT NOW

Autumn is the best time to plant garlic because it needs a bit of winter chill to encourage it to do its best in the coming year. One interesting variety to try is Serpent Garlic which gets its name from its extravagantly coiled stems known as 'scapes'. The scapes are edible and are regarded as something of a delicacy. They can be picked in summer. Harvest the bulbs as normal later in the year. Two for the price of one!

Prickly pals

Follow these steps to make your garden a hedgehog haven.

- Avoid pesticides and chemicals.
- Put an escape route into your pond.

Hedgehogs are quite good swimmers, but if your pond has steep sides they will have trouble getting out.

- Be careful with power tools. Hogs love to hide in piles of vegetation or overgrown areas.
- Netting for protecting vegetables can be a problem. Try not to leave them lying around.
- A nicely built bonfire looks like a perfect nesting site to a hedgehog.
- If your dog tends to chase things, watch her carefully when you put her out at night.

Garden NOTES



Autumn is upon us, the evenings are gradually drawing in and winter is fast approaching. This is the time for trees and hedging; fruit trees and fruit bushes; roses and bulbs; and garlic.



Vineyards in autumn...

Now that's a sight worth seeing. Tour some of our favourite vineyards and you'll see a spectacle of autumn colour, harvesting and vines laden with grapes. If you don't know where to start (Kent has quite a few vineyards), The Wine Garden of England website is the perfect guide, but we love Chapel Down, Gusbourne, Hush Heath, Biddenden and Simpsons, for their award-winning wines, magnificent views, tours and tastings.

Visit www.winegardenofengland.co.uk



RED CASCADE

Euonymus varieties offer both foliage in brilliant shades of red, and hanging lobed fruits to the autumn garden, and do well in a range of conditions in most soils in sun to part shade. Grow as a specimen shrub, in mixed borders, in a semi-woodland setting, or massed as an informal hedge. One of the advantages of growing Euonymus is that they are tough plants which will tolerate less than ideal conditions, making them suitable for growing in a difficult area of the garden.

FADED BEAUTY

With its huge blooms, Hydrangea macrophylla makes a great show all through the summer. By autumn the flowers are beginning to go over, but don't be in too much of a hurry to lop them off. These faded blooms have a gentle, understated charm which will continue to add colour and structure to your garden for a couple more months. Although conventional wisdom dictates pruning hydrangeas immediately after flowering, this is entirely optional. Some gardeners like to hold off the secateurs until winter starts to bite. As long as they are pruned by mid-spring your plants will not suffer.



What to do now

- Pick apples frequently before they become damaged so they won't deteriorate in storage.
- Revamp your bedding. Remove tired summer flowers, then plant new frost-tolerant ones.
- Continue planting out spring bulbs, such as daffodils, hyacinths and crocuses.
- Make leaf mould.
- Harvest cabbages.
- Plant lettuces in a cool greenhouse for daily salads this winter.
- Collect and store seeds somewhere cool and dry until next spring.



RICH PICKINGS

Kent offers plenty of places to pick the perfect pumpkin, from farms to independent shops: you're sure to find a super treat to creatively carve or cook into a cosy autumn dish. So if you're searching high and low for a pumpkin to make the neighbours stop and scare! Visit www.visitkent.co.uk for ideas.





- Softwoods
- Hardwoods
- Sheet materials
- Decking
- Machined to your design



Contact us on: 01227 738838
Email: sales@eastkenttimber.co.uk
www.eastkenttimber.co.uk

WAREHAMS

Antique Garden Ornament Gustavian Furniture

68 Oxford Street - Whitstable, CT5 1DG
Mobile: 07831 210139
www.warehams.com

Georgian Brickwork

**Specialists in
Conservation & Heritage Brickwork**

Skilful repairs to listed & period properties
using
traditional methods and materials
Charles: 07732 975 349
www.georgianbrickwork.co.uk

KENT'S LEADING SPECIALISTS IN

DRIVEWAYS AND PATIOS

Est. 1987

www.drivewayexperts.co.uk

Landscaping specialists

- Block paving ■ Driveways
- Decking ■ Fencing ■ Patios
- Turfing ■ Garden clearance
- Building & maintenance work



01227 749872 | 07770 964939

Kent's
only Kadai
fire bowl stockists



Preston Garden Centre

Santa's back, bigger and better!

Christmas trees for sale end of November

- Great autumn seasonal colour
- Hedging and screening
- Large selection of pots
- Cards and gifts
- Wheelchair friendly
- Christmas trees
- Gifts & decorations
- All autumn gardening

OPEN EVERY DAY

Monday – Saturday 9am to 5pm; Sunday 10am to 4pm

COPPERS BISTRO – SEE PAGE 107



The Street, Preston Nr Wingham, Canterbury CT3 1ED



Tel: 01227 722250





EVERGREEN LANDSCAPING

All aspects of landscaping work undertaken:

- Decking, patios, fencing
- Driveways, block paving, brick and stone work
- Ponds, planting and more.

All finished to a high standard at competitive prices.

Phone Lee 07799103112 / 01227 264482

For a free quotation or visit www.evergreengardenskent.co.uk

LEADING THE WAY IN LAWN CARE



PREPARE YOUR LAWN NOW

Autumn is a very important season for your grass. Lush green lawns in spring don't just appear overnight, the preparation starts now. Revolutionise your lawn with annual machine work paired with our unique **Spring Ready Treatment** applied from January - working wonders across the nation's lawns.

EVERY LAWN BENEFITS FROM MACHINE WORK

Lawns have a natural build-up of thatch. Thatch creates an environment irresistible to moss. **Aeration** and **Scarification** reduce thatch, thus reducing moss. **Simple!**

Book your machine work in today - your lawn will thank you for it!

Join our nation of Lawn Lovers today: Call: 01227 652351

Email: ashford@greenthumb.co.uk

Visit: greenthumb.co.uk





HOW TO... RESTORE ORIGINAL IRON RAILINGS

Although extremely durable, over time the aesthetic appeal of wrought iron can degrade. Usually the first thing to greet guests at your home, it needs to create a good impression.

- Remove any debris or vegetation. Grass, weeds and leaves can build up and cause rust and corrosion.
- After washing, use a metal scraper or wire brush to clean off algae and patches of flaking paint. Pay special attention to cleaning intricate curves, designs and hinged areas.
- Smooth the surface with an abrasive paper and apply a proprietary rust remover.
- Check the structure. In some cases welding may be required to reattach areas that may have degraded beyond simple repair. Check hinges.
- Clean and prime. Applying primer before paint will protect your gate or fence from rust and corrosion. Wait until the primer is completely dry before applying the enamel paint.
- Be sure to use an enamel paint that is rust-inhibitive, exterior rated and is designed to be used on metal. Black enamel is the most common colour to use and is considered 'period correct' for historic homes. Aerosol paint is the best way to go for uniform coverage.

ALAN
HOPKINS

Tel: 01227 731302 or 07961 985538
www.alanhopkinstreesurgeon.co.uk

Underdown Nursery, Mystole Lane,
Chartham CT4 7BX



ALL ASPECTS OF TREWORK

NPTC CERTIFIED

- Felling
- Thinning
- Pollarding
- Deadwood
- Site & garden clearance
- Stump grinding
- Wood chipping
- Call today for a competitive quote

Constructed and resurfaced
in Kent, Sussex and Surrey



Please call Martin
for free advice
and quotations

Tel: 01424 892265
07831 643835

www.martingurr.co.uk





InThe Country



**Come visit us in store for a warm, friendly welcome,
stocking all your needs for outdoor pursuits.**

Our store is open Wednesday until Sunday 10.00am – 4.00pm, visit us at

IN THE COUNTRY, ASHFORD ROAD, BADLESMERE, KENT ME13 0NX

01233 742700 inthecountrykent.co.uk



TARMAC & RESIN BOUND GRAVEL SPECIALISTS



KENT
SURFACING
CONTRACTORS

- DRIVEWAYS
- FOOTPATHS
- CAR PARKS
- FORECOURTS
- PRIVATE ROADS
- DROPPED KERBS
- GROUNDWORK
- PATIOS

Kent Surfacing Contractors LTD are a third generation surfacing company based in Challock, Ashford.

We have built a trusted name amongst domestic, commercial and industrial clients through our high standard of work.

We work with developers on a regular basis, forming anything from new roads and drainage for new development sites, to the driveways and patios.

We offer a free site survey and full written no obligation quotation.

- ✓ 10m Public Liability Insurance
- ✓ Free Survey & Quotation
- ✓ Trading Standards Approved

- DOMESTIC
- COMMERCIAL
- INDUSTRIAL

01233 349 012

www.kentsurfacingcontractors.co.uk



*Make your outdoors as
comfy as your indoors*

LUXURIOUS SHEPHERD HUTS & PODS • OUTDOOR STRUCTURES • FURNITURE • OUTDOOR GYM EQUIPMENT



At Outdoorsy Living we cater for the superior outdoor experience.

Contemporary yet traditional, our luxury shepherd huts and glamping pods are perfect for a wide range of purposes, with everything you need to make your everyday feel like a holiday.

Order yours now for year-round enjoyment
www.outdoorsy-living.co.uk

*Including:
Outdoor gym and play
equipment for the family*

Find Us On Social Media



Contact our customer services on:

01622 844 238 - info@outdoorsy-living.co.uk



KNOCK, KNOCK...

Door knockers are more popular in England than in any other country and can be found everywhere, even in the most remote locations.

Door knockers have a bit of a dark past, with the earliest thought to originate from Ancient Greece where slaves were chained to a heavy ring attached to the door by a plate in order to greet any guests. In the event the slave had fallen asleep, the guest would tap the knocker to raise the attention of the slave or the homeowner.

The Romans continued with the use of the knocker and it spread across the empire, and so the heavy knocker remained as a means for visitors to announce their presence until around the 15th century.

Until the 16th century door knockers were generally fairly plain, but as blacksmiths developed their skills wealthy people began

to have more detailed designs, often relating to local patterns and traditions.

Until the end of the 18th century, door furniture would have been made of iron or wood or, if extremely grand, bronze. Doors were either barred and bolted from the inside or fitted with box or rim locks fixed to the inside of the door which opened with large unwieldy keys; however these were extremely easy to pick. Two inventors solved this problem: Joseph Bramah patented a mortice lock in 1784, followed by Jeremiah Chubb in 1818, both producing improved and more impenetrable locks using smaller keys.

One of the first UK foundries was Kenricks in West Bromwich. Founded in the 1760s, the family firm exported everyday cast iron goods such as kitchenware worldwide. They also produced a range of ornate items for the home and garden reflecting the fashions of the time including door furniture.

At the beginning of the Georgian period door knockers were generally still simple, cast iron and painted black, but during the 1800s as they became more widely used, so it became fashionable to have more elaborate door knockers, such as lion's and sphynx's heads often cast in brass or bronze.

The later part of the Georgian era saw brass become the main material for door furniture including door knockers. It also was the time when bell pulls came into use (1830s) and the penny post began (1840s), starting the need for letter boxes.

BRASS DOCTOR'S DOOR KNOCKER

The Brass Doctor's door knocker is based on an early Georgian design and was named the 'doctor's door knocker' as it was used to identify the front door of a doctor's house.

Throughout the Victorian period the door knocker remained (despite some being removed and replaced by the bell pull), often as a show of wealth in elaborate designs and highly polished brass.

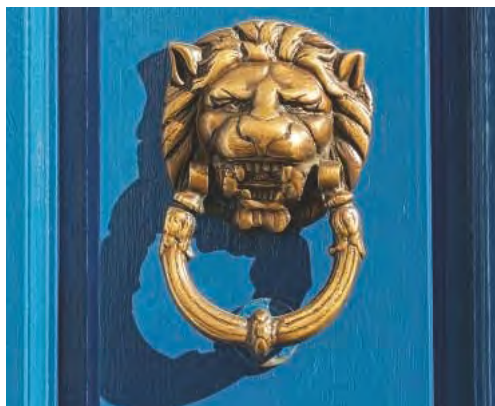


One of the most recognisable doors in the world is No. 10 Downing Street. The famous lion's head door knocker and brass letterbox date back to the 1770s.

The letterbox is inscribed 'First Lord of the Treasury', the title held by every Prime Minister since Sir Robert Walpole.

LION HEAD DOOR KNOCKERS

As the door knocker became more elaborate over time many designs were inspired by mythology and religion. The lion head door knocker with its mouth gripping the ring became particularly popular in the early 19th century and has remained a favourite. The lion has been used as a symbol of Great Britain and is thought to signify strength, pride, protection and power.



HAND SHAPED DOOR KNOCKERS

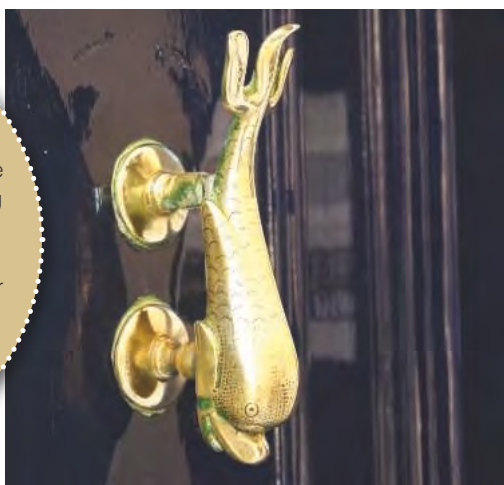
Another beautiful door knocker spotted the world over is the hand shaped door knocker. Considered to have originated in Muslim countries and said to symbolise the Hand of Fatima (recognised and used as a sign of protection) it would indicate that a person of Muslim faith lived in the house.

It is also suggested that two types of hand door knocker exist: male and a female, both of which would be present on the front door each with its own distinct sound. The visitor would then knock the appropriate knocker according to their gender.



Fish Shaped Door Knockers

Thought to originate from Scottish foundries, knockers with a maritime theme were often seen on the homes of shipping merchants. There are a wide variety of styles of dolphin and mythical fish knockers each with their own meaning, for example a carp is a symbol of good luck and abundance and a fish with a Poseidon fork design depicts power and a mastery of the seas.



Choosing door furniture for your period property

Unfortunately it is quite rare to see a front door with all its original furniture. As the postal service was set up so letter plates were installed, more sophisticated locks were added and as more switched to doorbells, knockers were removed. Today we are fortunate that there are many ways to recapture the grandeur of our doors.

The first place to start is to assess what remains on your door. Are you matching the knocker to existing pieces or starting from scratch? If you are adding to existing pieces, care must be taken to 'match' with the existing furniture. Most modern brass is much more yellow than the rich tones of antique brass. It also tends to be lacquered, so will not patina in the same way as older pieces.

Most companies that specialise in period properties should have a range of knockers in the richer brass that are also unlacquered. Have a look up your street: are there any originals left that can give you a clue as to what would have been there? They will not all be identical, but will give some insight and maybe even some inspiration. But if all else fails, a knowledgeable retailer should be able to give you some pointers given the age of house, location and your requirements.

In conclusion, when choosing your door knocker, bare in mind their interesting meanings and historical references and most of all, have fun with it.

Article courtesy of willowandstone.co.uk, sellers of carefully selected ironmongery, much of which is British made using traditional manufacturing processes and quality materials.

Where to buy...



Light antique brass door knocker, £164.50, Willow & Stone



Classic letterplate with clapper, £96.50, willowandstone.co.uk



Doctor's door knocker, £133.85, canterbury-brass.co.uk



Doctor's door knocker, £229, canterbury-brass.co.uk



Padlock heart door knocker, £159; Knock Knock door knocker, £139 gipsyhillhardware.com



Brass loop door knocker, £48.79, fixingswarehouse.co.uk



Smithwick ring door knocker, £89.50, Willow & Stone



Brass fish door knocker, £45, thedoorknockercompany.co.uk



Established 1988

DOMESTIC CLEANING SERVICES LTD

Regular or One-off Cleaning
Homes and Holiday Lets
End of Tenancy
Moving Cleans
Spring Cleans

Professional, Friendly, Reliable Service

CALL US NOW FOR A FREE QUOTATION

Tel: 01227 277033 | www.supermaids.co.uk
info@supermaids.co.uk

CORE

Waste Management

- Rubbish Clearances
- Bulky Waste Removal
- Garden Waste
- Builders Waste
- House Clearances
- Bins Emptied
- Man & Van Load & Go
- Cheaper Than A Skip



Fully Licensed & Insured

Contact Our Team

01227 940750 / 07704453288



THE BARN



The Antiques Barn BETHERSDEN

Over 3,000 sq ft of the stuff you didn't know you wanted!!!

As well as the stuff you do!

Open 7 days a week 10.00 - 4.30.



Behind Ripleys Garden Centre, Ashford Road, Bethersden, Ashford, TN26 3LF

Telephone: 07708759581



WE PROVIDE A FULL OR PARTIAL HOUSE CLEARANCE SERVICE



BAGHAM BARN ANTIQUES & INTERIORS

Canterbury Road (A28) Chilham Kent CT48DU



Tel: 01227 732522 | www.baghambarnantiques.com



20TH ANNIVERSARY YEAR

Opening times Thu, Fri, Sat 10am-5pm, Sun 10am-4pm

(Holiday opening: Mon 27th Dec to Sun 2nd Jan, 10am - 4pm each day)



HUNKERDOWN TEAROOM

is open serving delicious snacks and refreshments inside or under the gazebo in the garden.

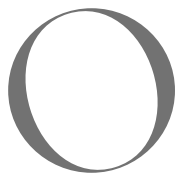
Not only furniture, mirrors, lighting, pictures, books and soft furnishings, we also have jewellery, silver, glassware, ceramics, militaria, maps and eclectic collectables; and a resident artist who will draw your best loved humans, pets or favourite sports car.

Dare to be different



If you crave quirkiness, but also want elegant design when remodelling your home, Hogwood House may well be the team to choose, as their aim is to make clients' dreams become reality, on any budget.





oizing with originality and with the courage of her convictions is an apt description of Joely Woodward, Founder and Creative Director of Hogwood

House Kitchens and Interiors. For a company that has a strapline of 'Dare to be different' you would be expecting someone who is full of confidence in her ability to deliver design, and she doesn't disappoint. After studying design at university, followed by a degree in construction and a career in site management, Joely has the credentials to back up her refreshing approach to making brave and bold design statements.

It was as a result of working long hours in a stressful job and musing during long commutes that the thought came to her that there was a gap in the market for a different type of company, one that could give its clients custom designed kitchens with individual style and an all-important wow factor, tailored to their needs. Sounds like a tall order, but instead of being deterred, Joely was inspired and so Hogwood House was conceived and established in 2018.

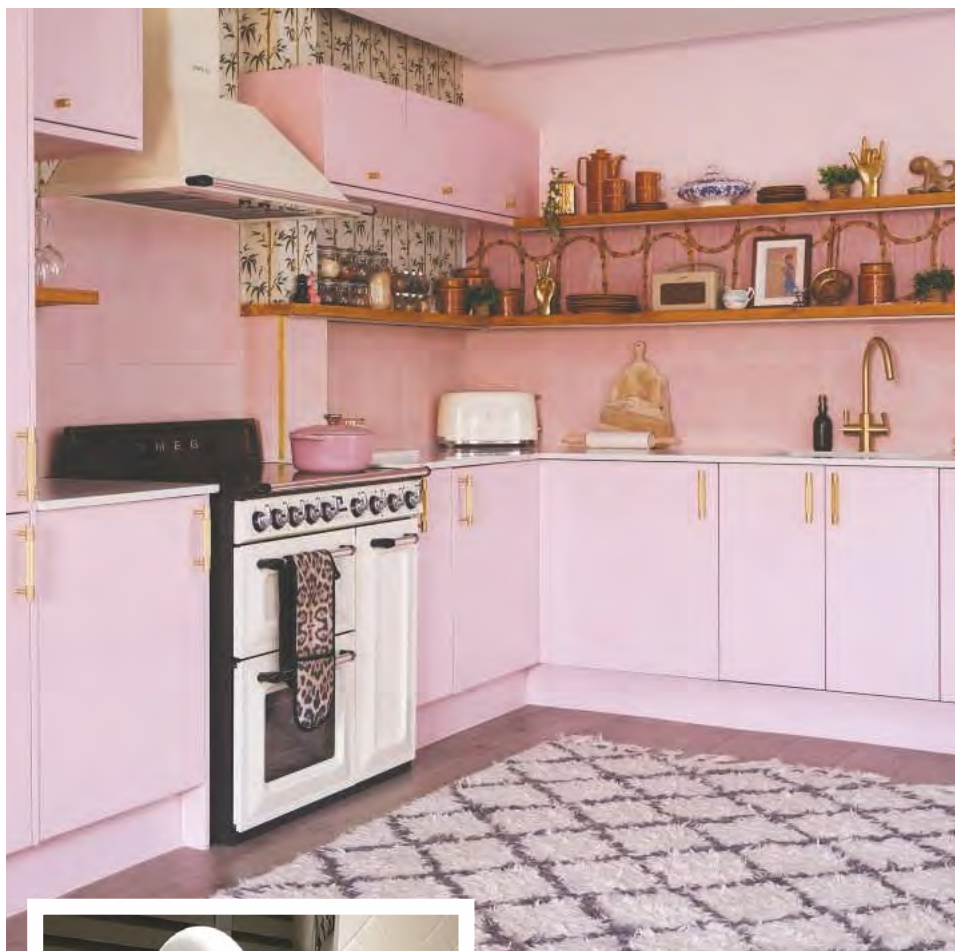
Joely, along with Head of Development Joe Hogarty and their Hogwood House team, have created a niche business providing interior design and project management with bespoke furniture, all hand-built in their factory workshop. Their speciality is custom-built kitchens at trade prices for residential and commercial clients.

Joely explained, "We've found from very early on that once we had started supplying our complete design and build packages to our clients in the first year, demand has grown year on year. Prospective customers got in touch with us because they loved what they'd seen us do for other clients, so it's a business that has

grown via word of mouth. Obviously no-one will recommend a business if they aren't happy with the job that's been done for them, so our unique approach to delivering the highest quality products and the ultimate levels of customer care is paying off. Branding is another thing that has made a difference; it proves the importance of labelling all our products, when people see the label they know who to contact, so being proud of our brand is really positive, because it's led to more enquiries and more clients."

They say fortune favours the brave, and this is a young company that is definitely that; they moved into a new studio-showroom last year. Whilst a lot of businesses were at a standstill or struggling with the next steps to make, HH are now welcoming a steady stream of clients to the studio at Court Lodge Farm just outside Canterbury for consultations. An appointment is necessary for these, as Joely stresses it's very important to ensure the team can give their full attention to all aspects of a client's design. The studio functions as a modest showroom with select kitchens and wardrobes to view. These are more to showcase their work as they are a bespoke company, so all items are made to order.

The HH team excels in combining old and new styles, with beautifully sleek, hand-built units and using tiles to add character, masterfully mixing textures, patterns and contrasting gloss and matt finishes, with just the right fixtures, fittings, handles and accessories. Integral to setting the perfect scene within your home is making the most of different types of lighting to create ambience and also to give perfect illumination for work areas and to highlight and focus attention on features and displays. It's Joely and the team's job to ensure your vision is brought to life.



The website gives a very good idea of the style of HH: it's refreshing and it underlines their 'anything goes' approach to design. It's all about you and what you desire. They offer a colour matching, paint to order service, so you can have any colour you want. If you want a pink, or sunshine yellow, or forest green kitchen that's what you'll get. The only limit is your imagination.

For further information or to make an appointment visit hogwoodhouse.co.uk.

A stylish & modern kitchen designed to suit you



Don't be different

Court Lodge Farm, Bishopsbourne, CT4 5HR | Phone: 01227 831663
Email: info@hogwoodhouse.co.uk | www.hogwoodhouse.co.uk



Beautiful natural stone kitchen worktops

LARGE SHOWROOM NOW OPEN

Granite

Quartz

Marble

Slate



www.avivastonegranite.co.uk

Court Lodge Farm,
Frog Lane,
Bishopsbourne,
Canterbury CT4 5HR

Tel 01227 678007
or 07976 893646
avivastonegranite@gmail.com

Aviva Stone
South East Ltd



Appleby • Grange

Fine bespoke kitchens • Handmade by local craftsmen

applebygrange.co.uk • Tel: 07779 809229

Solid as a rock

None of us know what life has in store or how we will react when the unthinkable happens. Do you crumble or dig deep to find a way to rebuild your life and company like this brave business owner?





Aviva Stone started its history as a modest masonry company supplying stone products for external use several decades ago, run from a barn in the depths of the east Kent countryside near Littlebourne. The founder of the company was Charlie Fagg, a traditional stonemason, who employed Mark Tomlin, as a trainee, who learned his trade as a stonemason, cutting and polishing stone, and gaining valuable experience and expertise over many years at Charlie's side.

Back in 2015, Charlie announced that he wanted to retire and gave Mark first refusal on buying the business. After a lot of soul-searching and weighing up the pros and cons, Mark, and his wife Amy, decided the opportunity to own the business was one they really couldn't afford to turn down and they did everything they could, including selling an investment property, to take up the opportunity.

In the first couple of years the new owners of Aviva Stone invested much time, money and effort into developing the business, diversifying and building on the previously modest business model. They moved into supplying stone for interior uses: kitchen worktops, fireplaces and hearths made from quartz, marble and granite. They took on more staff, building up the company's reputation as a friendly family-run, local company supplying top quality products.

The course of life rarely runs smoothly and amid the early success of the business, disaster struck in 2017. Totally unexpectedly Mark died and Amy found herself widowed. After an obviously difficult period of shock and grief Amy, amazingly, picked up the pieces of her life and business, and made a determined effort to continue on the path they had started together.

“We only use the very best natural stone materials, the quartz, granite, marble and slate are sourced by UK Stone Merchants from many countries.”

Failure wasn't an option; there was no choice but to press on up a very steep learning curve.

Previously Amy had taken care of the admin and had little to do with the practical side of things; Mark ran the estimating and was the expert when it came to the heart of the business which of course was the cutting, polishing, finishing and fitting of the beautiful stonework they supplied to their customers.

“These were desperate times,” Amy says, “I called on family and friends for help, even Charlie Fagg the previous owner of the business stepped up to help us keep going. I had to learn fast and got to grips with mastering templating, estimating, sales and customer service. I'm so grateful to everyone that helped us continue to run the business then and now; without their help we wouldn't be here today. I'm proud of

our success; nowadays we call ourselves Team Aviva.”

Amy's determination has paid off. The last few years has seen Aviva Stone flourish: they've taken on more staff, her son Oliver is the top fitter and polisher following in his father's footsteps, and they've moved to new premises with an impressive showroom and large stone manufacturing operation where all their products are expertly cut, polished and finished, just outside Canterbury in Bishopsbourne.

What could have been a disaster is now a triumph. Amy has an obvious passion for the products the business is built on, and has gained expertise on the stone she admits to knowing so little about before.

“We only use the very best natural stone materials – the





quartz, granite, marble and slate are sourced by UK Stone Merchants from many countries: Italy, India, Brazil and Portugal to mention a few. This makes them a precious resource and they are expensive. A lot of time and hard work goes into creating a beautiful bespoke kitchen worktop, or hearth. Our customers are making an investment in having a natural stone product that should last many years, so it's our job to give them individual attention at every stage of their journey with us, from estimating to fitting, to ensure they get exactly what they want. It goes without saying that attention to detail is vital, once stone is cut it's cut, there's no going back. A mistake can be costly and a dreadful waste of valuable material."

Beautiful stone is very much in evidence at Aviva Stone's showroom. There's a bewildering

array of many different types on display, along with some gorgeous examples of how it is utilised in different styles from ultra-modern kitchens through to timeless classic designs for visitors to experience up close and personal. And there's expert help on hand to advise and guide you through the process of selecting the stone to suit your style. There is no doubt there's a huge difference in quality between natural stone like quartz and marble to the sort of cheap granite lookalikes available from the DIY stores. The touch and feel, and the authentic colour, pattern and veining of the stones speak for themselves.

To find out more visit the showroom for yourself; for further details visit: www.avivastonegranite.co.uk.



Flooring

DESIGNS



- Luxury vinyl tiles
- High quality carpets
- Cushion vinyl
- Laminate flooring
- Real & engineered wood
- High quality installation

Family-run business offering first class service

64-65 High Street, Wingham, Canterbury, Kent, CT3 3BJ

Tel: 01227 721 938 or 07808 667369 www.redflooring.co.uk



DESIGNER BED CO.

CANTERBURY

FAMILY OWNED BED & MATTRESS COMPANY SINCE 1977

MAKE YOUR BEDROOM THE MOST BEAUTIFUL ROOM IN THE HOUSE

CHOOSE FROM: SOLID OAK • MAHOGANY • PAINTED • CHROME • DIVANS
RECLAIMED WOOD • SCANDINAVIAN PINE • LIT BATEAU • OTTOMANS
CAST IRON VICTORIAN • UPHOLSTERED • ELECTRONICALLY ADJUSTABLE



100S OF DESIGNS PLUS BESPOKE SERVICE AVAILABLE

HUGE CHOICE OF FINISH & COLOURS

WE DELIVER, WE CAN ASSEMBLE YOUR NEW BED & TAKE AWAY YOUR OLD ONE

FANTASTIC CHOICE OF MATTRESSES AVAILABLE TO TRY BEFORE YOU BUY
IN OUR WELCOMING SHOWROOM

EXTRA 5% DISCOUNT
EXCLUSIVE TO READERS OF
CONSERVATION NEWS

27 Maynard Road Wincheap Estate Canterbury Kent CT1 3RH

T: 01227 479446 E: designerbedsenquiries@live.co.uk www.designerbedsltd.co.uk



JULIA BRENDEL

Fabrics and home accessories



www.juliabrendel.com

Cleal's
UPHOLSTERY

Over 55 years experience

Repair and re-cover dining chairs. Re-upholstery and recovering in a wide range of fabrics.

Renew old cushions; replace rubber webbing; renew old springs. Cane seating; caravan & boat cushions.

- Domestic
- Modern
- Contract
- Antique

Family
run
business



21 Oakwood Drive
Whitstable CT5 1NY

T: 01227 273811

e: juliecleal@hotmail.co.uk

WAREHAMS

Antique Garden Ornament — Gustavian Furniture

68 Oxford Street - Whitstable CT5 1DG

Mobile : 078931 210139

www.warehams.com

Scandi Christmas



Opening hours:
Tuesday - Saturday
10am - 4pm

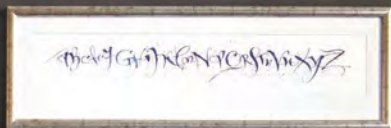
The Chalk House
32-33 High Street
Wingham
Kent
CT3 1AB

Phone: 01227 720536
www.thechalkhouse.co.uk



SOFAS & STUFF

Let's design together



Clavering 3 Seater in Flemish Linen Stripe Black £3,760

Eco fabrics and fillings available

TUNBRIDGE WELLS SHOWROOM

The Estate Yard, Eridge, Nr Tunbridge Wells, Kent, TN3 9JR

01892 572309 www.sofasandstuff.com

Cottagecore

Is domesticity the new rock 'n' roll?

Words: Liz Norton



Photo: Zara Home



Even if you're not familiar with the word, you'll be familiar with aesthetic of cottagecore. It's been around forever in one guise or another, but its adoption by the young and the terminally hip have made it chic enough to warrant its own nomenclature.

Put simply, cottagecore is the aesthetic associated with country cottage living. It's quintessentially British at heart and can be most easily recognised in designers like

Laura Ashley and Cath Kidston. However, cottagecore has become so much more than just a 'look': it's a whole way of life...

Why has it become so popular?

Despite the fact that it's been kicking about for years, we can really thank the pandemic for the newfound popularity of cottagecore. The word itself seems to have been coined within the past couple of years, and lockdown gave rise to a massive surge in the popularity of all things homemade. Put it this way: if you baked your own banana bread, took up knitting or blitzed your garden over lockdown, then you can call yourself a cottagecore aficionado.

Although social media influencers and people using the trend to sell their own brand of rustic charm can make the movement seem trite and clichéd, cottagecore is, at its heart, a fantastic movement. It represents a return to traditional values, and to the 'make do and mend' mentality that has seen us through so many tough times.

The Good Life

Like Tom and Barbara, proponents of cottagecore have turned their backs on a

culture of disposable tech and fast fashion, and are concentrating instead on sustainability and environmentalism.

Take gardening for example: growing your own herbs and veggies, whether you've got an acre of land or one window box, is incredibly satisfying and extremely good for anxiety – something that many of us have had to deal with through lockdown and beyond. The idea that we can be responsible for our own wellbeing and do our bit for the planet, no matter how small, is extremely comforting.

Indeed, even though cottagecore has found its home on social media platforms such as Instagram, embracing the movement actually helps us to step away from our screens and get back to nature, get back to our homes and our families, and get back to spending more time on ourselves.

People who found themselves working from home over lockdown also found themselves with a new appreciation for the simpler things in life, and this is cottagecore at its best.

Is cottagecore right for you?

Basically, yes – cottagecore in one form or another is for everyone. Whether you're throwing yourself into it completely or just contemplating spending more time in the garden, there's a way to make cottagecore work for you, so take some time for yourself, slow down the pace and embrace the good life!



1



2



3



1. Jug: www.melodymaison.co.uk
2. Glassware: www.neptune.com
3. Linen and china: www.puretabletop.com

GET THE LOOK

If you've enjoyed the good life this past year and are ready to implement a cottagecore aesthetic in your home, then take a few tips from us:



Above: www.woodchipandmagnolia.co.uk
Below: www.gardenesque.com



www.neptune.com

COLOUR

Autumn and spring are key seasons for cottagecore décor, so think oranges, reds, sage green and browns; or yellows, pinks, sky blue and pale green.

PATTERNS

Florals are the mainstay of cottagecore, but birds, butterflies, and bumblebees make a gorgeous natural addition to the look.

WOOD

Anything natural looking can be cottagecore, so think wooden furniture and accessories for a rustic look.

WARMTH

The key word associated with this movement is cosy. Real fires (see our feature on wood burning stoves on page 48), home cooking, and fresh herbs in recycled jam jars are all part of this aesthetic. Basically, if it makes you feel happy and reminds you of better times then you're on the right track.



Throw, £50,
waltonshop.co.uk

Adeline three light pendant in
antique copper, £192
darlighting.co.uk



Ruffle cushion, £75,
juliabrendel.com

Armchair, £550 & footstool £195,
raggedrose.com



Cushion, £12,
athomeinthecountry.co.uk



Camilla Pretty Blue fabric from
Charlotte Gaisford, £85 per metre
Oohhowlovely.co.uk

Cottagecore

GET THE LOOK



Lamp, £120,
Old English Pine, Sandgate



Mustard velvet tassel cushion,
£30, raggedrose.com



Lampshade, £120,
juliabrendel.com



Candle, £37,
neptune.com



Syon bowl, £46
www.neptune.com



Bedham footstool in
Rustic Dove, £742
sofasandstuff.com



Persephone linen napkin,
£18, byhope.co.uk



Gingham cake tin,
£2.99, Home Sense



Peacock umbrella stand,
£125, shimu.co.uk



Wild flower mix in
ceramic vase, £79,
lenleys.co.uk

Clock, £60, very.co.uk



Camden three-seater sofa in Mottled Linen Dawn, £2,881, sofasandstuff.com



Shopping basket, £35, deelightfulwillow.com

Salisbury encaustic tiles, £57.96 per sq metre, thestonewarehouse.co.uk



White twig heart, £85 thechalkhouse.co.uk



Mirror, £120 thechalkhouse.co.uk



Scented candle, £29.95, mintandmay.co.uk

Pooky Nellie Table Lamp, £105, ikat shade, £74, Oohhowlovely.co.uk



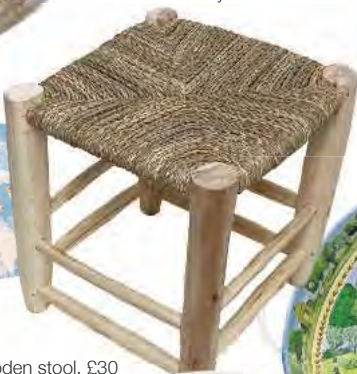
Biscuit barrel, £19.50 Copperfields of Whitstable



Medium brass langern, £48 layeredlounge.com



Wooden stool, £30 basketbasket.co.uk



Pooky Ellie table lamp, £75, & shade, £48, Oohhowlovely.co.uk



Bumblebee mug, £18.49, www.waltonshop.co.uk



Large round tray, £32.95 annabeljames.co.uk



Kilner jars, from £2.50, Copperfields of Whitstable

Wingham
Woodburning Stoves



*Come and visit our showroom
or visit our website*



Little Crockshard Farm Shop, Crockshard Lane, Wingham, Nr Canterbury.
CT3 1NYT Tel: 01227 728130 www.winghamwoodburningstoves.co.uk



To burn or not to burn?

...that is the question, thanks to statistics that show that traditional domestic wood burners are now the single biggest source of small particle air pollution in the UK. However, if you want a wood or multi fuel burning stove without the eco-impact, read on.



The Shoreditch, Chesneys

Government data shows that, whilst only 8% of the population have wood burning stoves, these stoves produce three times more pollution than road traffic; but the new generation of burners are employing technology specifically designed to curb this trend.

Small particle pollution is a major cause for concern, as it can enter the bloodstream and travel around the body, lodging in the internal organs. Because of this worrying fact, the government have introduced a total ban on the retail sale of 'wet wood' (green wood) and a gradual ban on retail coal sales, which will be in full force by 2023.

This move to dry wood and other solid fuels means that people can still have the warmth and ambience of traditional stoves in their homes, whilst minimising the impact of small particle pollution, but there's so much more that can be done simply by choosing to buy good quality stoves from a reputable supplier.

Clean burn technology

New stoves must be 2022 Ecodesign compliant, meaning that they will have passed stringent Ecodesign and Defra Approved emissions tests. The term 'clean burn' refers to the system by which a fresh supply of oxygen is introduced into the stove, and this oxygen allows extra gases to be burnt instead of escaping into the surrounding environment. This means that

Vogue small wood burning eco stove, Stovax



not only are potentially harmful gases safely utilised (referred to as secondary combustion), but also that the stove itself gives off more heat with less fuel, making it more efficient and cost effective. This process is accentuated by pulling the air through channels adjacent to the firebox, thus heating the air itself.

Within the UK there are several 'smoke control areas' – in which it is illegal to use certain combustibles. However, many clean burn stoves are approved for use in these areas because their emissions are so much lower. You can ask your supplier about approved models, and can contact your local council to see if you are in a smoke control area. You should also ensure that the fuel you are using is approved and of a sufficiently high quality.

Air wash technology

Air wash technology is another innovation designed to increase efficiency in your burner, but this also has an aesthetic impact: with Air wash, a flow of air is pulled into the stove via a vent above the glass panel. This air is forced down over the glass, washing away soot and keeping the glass door from blackening. This means that you have less maintenance to do and can always see the flames inside the stove, which is a big part of the draw with wood burners.



The Salisbury, Chesneys



Carron eco revolution woodburning stove



Stovax Riva Vision eco woodburning stove

Other considerations

Once you've decided on getting a wood or multi fuel burner, you need to start considering which model you want, and it's here that aesthetics really come into play. There are a lot of options available, so you needn't worry that your stove won't match your décor. Stoves can be traditional or contemporary, small or large and a variety of shapes and styles.

One thing that should influence you is heat output, and this will be based on the size of the area you wish to heat. In order to heat your room to around 21 degrees C when it's 0 degrees outside you would need approximately 1kw of heat output for every 14 cubic metres of space. For example a room that is 5m x 5m x 3m high gives 75 cu.m of space. Divide this by 14 and you get 5.3 which, rounded down, would mean you

require a 5kW stove. This may vary if you have larger than average windows/double glazing etc, but your supplier can advise you on any details. You also need to decide if you want your stove to heat water as well as air, and what sort of hearth you require (it should be big enough to ensure that any fallen fuel or embers land on it and not the surrounding flooring).

So should you go for it?

Stoves are a gorgeous, cosy heating solution. They make a fantastic focal piece and an excellent selling point should you ever move. As long as you bear in mind the type and quality of the stove, and ensure that it conforms to the necessary ecological standards and legislation, then a wood or multi fuel stove is a sound investment and a splendid addition to your home.

Whitstable Stove Shop

LOG BURNING ★ MULTI-FUEL ★ CAMP COOKING



2 Saddleton Road, CT5 4JB Tel: 01227 266209
whitstablestoveshop.co.uk



NON FERROUS METAL RECYCLING & WASTE HANDLING

JOHN BUTCHER BROS **TEL: 01227 713850**

- Fast efficient turnaround
- Immediate cleared funds via BACS
- Collections available for larger quantities

CALL FOR CURRENT PRICES

Open to the public & trade

Mon – Fri, 8am - 5pm

Sat, 8am - 12 noon

www.johnbutcherbros.co.uk
info@johnbutcherbros.co.uk



**We pay competitive prices for
all the following grades:**

- Copper • Brass
- Lead • Copper tanks
- Aluminium • Cables
- Silver • Gold
- Catalytic converters etc.



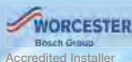
Unit 12, Canterbury Ind Park, Island Road, Hersden, Canterbury CT3 4HQ

Ed Parry

Plumbing & Heating

Installation, Servicing & Repair

- Boilers
- Cookers
- Central Heating
- Bathrooms
- Power Flushing
- Showers



Landlord gas safety certificates

01227 266236 • 07976 925224
ed.parry@me.com
www.edparryplumbingandheating.co.uk

SOUTHGATE ELECTRICAL CO. LTD

The Best Electrical Services

*Offering a full range of electrical services
from design to installation.*

- External Electrics
- New Builds
- Access and Security
- Space Heating
- Electric Showers
- Fire Alarms
- Landlord Certificates



T: 01227 712790 / 07889 895394
www.electricians-canterbury.com



SJR GAS

Expert Boiler Installation & Servicing
Full Central Heating System Design & Install
Landlord Gas Safety Certificates
Extended Boiler Warranties Available

01227 219662 - 07915 523511



sjrgas.co.uk



ONE CALL GAS SERVICES

DESIGN • INSTALL • MAINTAIN

- ✓ Boiler breakdowns and servicing (manufacturer approved)
- ✓ Boiler installations ✓ Cooker installations
- ✓ General plumbing works
- ✓ Landlords Gas Safety Certificates (CPI2)
- ✓ Powerflushing

Tel: 01227 206247

www.onecallgasservices.co.uk

Email: info@onecallgasservices.co.uk



FREE no obligation quotes on boiler and central heating installations. Finance options available

Rye Showroom
55 Cinque Ports Street
Rye, TN31 7AN



Landgate Showroom
By Appointment
3 Landgate, Rye, TN31 7LH

With an ever-growing demand for custom-made, designed rugs and our collaborations with designers across the globe, we can create rugs in any design imaginable, alongside thousands of existing rugs to choose from.



Call, 01797 360353 | rye@handmaderugs.co.uk | www.handmaderugs.co.uk



OLD ENGLISH PINE CLOSING IN JANUARY

Your last chance to visit
one of the best loved shops
for miles around.

100/102 Sandgate High St,
Sandgate, Folkestone CT20 3BY

Tel: 01303 248560
www.oldenglishpinekent.co.uk

Shutters manufactured in
Europe, supplied & installed
within four weeks



CGS BLINDS & SHUTTERS LTD

Come and visit our new showroom

• Huge choice • FREE quotations

Tel: 01227 278643

146 Tankerton Road, Whitstable CT5 2AW

www.cgsblinds.co.uk



Find us on Facebook



Gary Miller

PAINTER & DECORATOR



30 years experience specialising in period & country properties across Kent. References available.

24 High Dewar Road, Rainham ME8 8DN

Tel: 01634 235773 or 07971 871433 garymillerdecorator@gmail.com

Save on your home insurance



Insurance for all types of homes including:

- High Value Homes
- Property Undergoing Renovations
- Non-Standard Construction
- Listed Buildings

gsi-insurance.com

GSI Insurance Services (Southern) Ltd
118 John Wilson Business Park
Whitstable
Kent
CT5 3QY

Tel: 01227 772 775

Your local broker has it covered

CHALK DOWN LIME



The Lime Yard, TN32 5RP | chalkdownlime.com | 01580 538082

Anthony Swaine ARCHITECTURE LTD

Conservation • Design Consultancy • Listed Buildings
Urban Design • Joinery Detailing • Traditional Shopfronts



**Initial consultation undertaken
free of charge**

**Specialising in traditional design & works to
historic buildings; timber framed structures; &
new buildings in the historic context**

The Bastion Tower,
16 Pound Lane,
Canterbury,
Kent CT1 2BZ

Tel: 01227 462680
mail@anthonyswaine.co.uk
www.anthonyswaine.co.uk

DOLMEN

CONSERVATION
& JOINERY

BESPOKE ARCHITECTURAL JOINERY
ENGLISH VERNACULAR CARPENTRY | HANDMADE KITCHENS
PERIOD DOORS AND WINDOWS | SUSTAINABLE TIMBER SOURCING

dolmenjoinery.co.uk | projects@dolmenjoinery.co.uk | 01708 732 813 | 01233 746 301 | [@dolmenconservation](https://www.instagram.com/dolmenconservation)
WOODCHURCH - KENT

OLIVER MANNING PRESS

CABINET MAKER, FURNITURE
DESIGNER & ANTIQUE RESTORER

BESPOKE, FREESTANDING AND FITTED
FURNITURE MADE TO ORDER



For more information contact:

01227 731765 or 07808 001844

olivermanningpress@gmail.com

www.olivermanningpress-bespoke.com



HERITAGE BRICKWORK RESTORATION LTD

◆ Lime Mortar Specialists ◆

◆ Historic Brickwork Repairs
& Repointing ◆

◆ Gauged Brickwork ◆

Tel: 01227 264 737 Mob: 07866 388 962

info@heritagebrickworkrestoration.co.uk

www.heritagebrickworkrestoration.co.uk



- Ecclesiastical work
- Flint work
- Heritage brickwork
- Lime pointing/render
- Fully insured
- New builds & extensions
- All work quoted for
- Traditionally trained craftsmen

Tel: 07856 266795

e-mail: conservation-construction@outlook.com



TAILORED HOME INSURANCE RIGHT DOWN TO THE FINEST DETAIL

For high-value properties and contents, including valuables, fine art and collections, choose NFU Mutual Bespoke home insurance.

To discuss your high value home insurance, please call Chyna Kenward from the Canterbury and Sittingbourne agency on 01227 451088 or email chyna_kenward@nfumutual.co.uk





Are you underestimating how much your bricks and mortar are worth?

Many of us are accustomed to estimating the value of our contents when reviewing our home insurance, but how confident are you that you've correctly estimated the costs for rebuilding your home? Unless it's your profession, it may not be something you're very familiar with, but it's the homeowner's responsibility to make sure the chosen insured amount is enough to cover the cost of a disaster.

This is known as the 'sum insured', and it's the maximum amount that an insurance company will pay out. In the event of needing to rebuild part, or all, of your property and the sum insured is too low, you could end up needing to make up the shortfall, which could stretch to several thousands of pounds. And particularly for high-value, larger or more unusual homes, calculating an accurate rebuild sum can be challenging.

So how can you make your way to a confident rebuild sum? Chyna Kenward, New Business Developer – High Net Worth at NFU Mutual Canterbury talks about some of the things to look out for and consider to avoid underinsurance on your building:

- 1 The insurance value is based on a mortgage valuation or a % of market value – neither of these are indications of what it will cost to reinstate the property and are therefore likely to be an inaccurate estimate for rebuilding costs.
 - 2 Listed buildings status or a conservation area location, may require additional permissions and specialist craftsmen and materials.
 - 3 The property's construction materials - for example, stone or non-standard materials such as 'green or high tech' can be unique and difficult to obtain.
 - 4 Extensive outbuildings, garages, store sheds, brick walls, courtyards, driveways and even tennis courts need to be included in the valuation.
 - 5 The age of the property.
 - 6 The fixtures and fittings within the property and any recent extensions, alterations or refurbishments.
 - 7 The location and access to the building and site.
- If you are in any doubt as to the accurate rebuild value of your property, please consult a surveyor.

If you're not sure whether your insurance is fully protecting your home and the things you treasure most, why not give us a call at NFU Mutual Canterbury on 01227 451088 or email canterbury@nfumutual.co.uk

J J Hodge, D J R Isard & J W Garrett is an appointed representative of The National Farmers Union Mutual Insurance Society Limited (No. 111982).

A reputation built on quality
craftsmanship and service

*Karl
Terry*

Roofing Contractors



Kent Peg Tiling & Listed Building Specialists.
Conservation and renovation specialists.
High quality work by experienced craftsman.
National Award Winning Company.

01797 270 268 | kentpegs.com

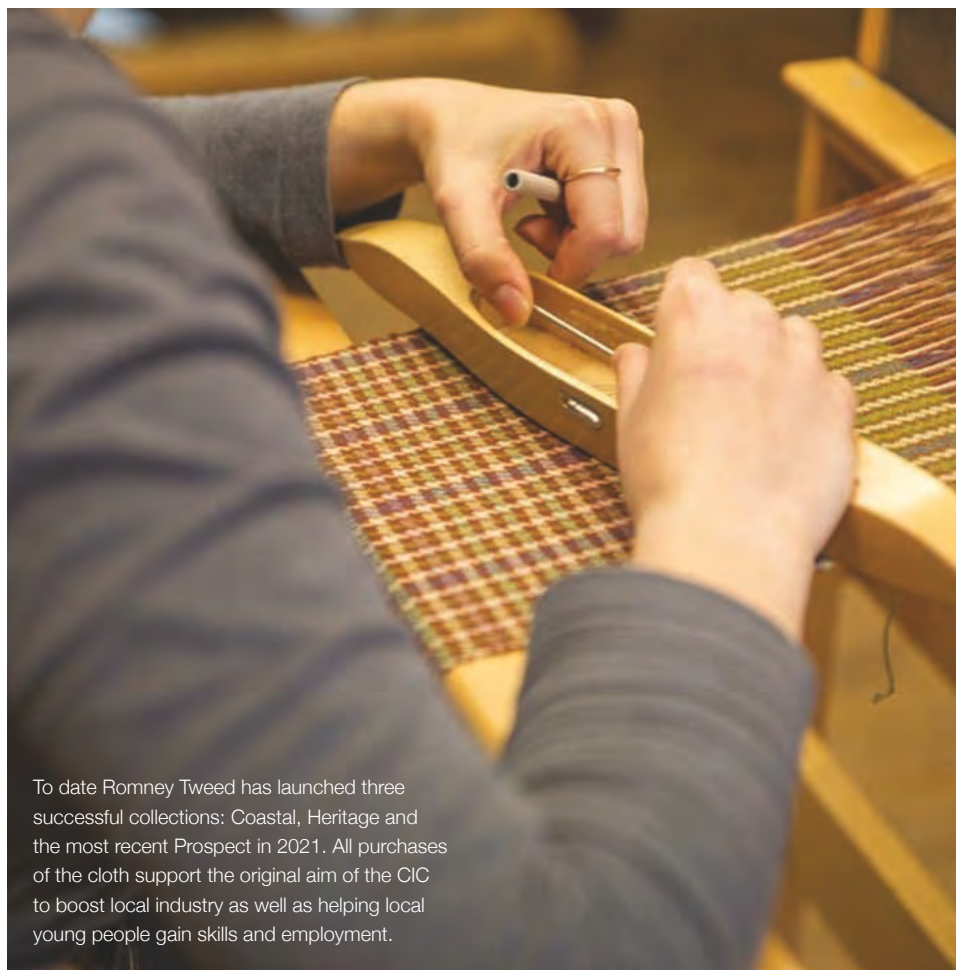


WOVEN WONDERS



Born out of the bleak but beautiful landscape of the Romney Marsh come materials that are woven wonders, evoking the desolate and eerily enchanting scenery that has inspired many artists who have been captivated by its wild charm for years.

Words: Louise Tomlin



To date Romney Tweed has launched three successful collections: Coastal, Heritage and the most recent Prospect in 2021. All purchases of the cloth support the original aim of the CIC to boost local industry as well as helping local young people gain skills and employment.

It's not only those driven by artistic endeavours who have sparks of creative genius: Pat Alston had a eureka moment when considering the sheep that have grazed the Romney Marshes since the 7th century, an area that her family has roots in. Pat was concerned that the Romney area, already classed as deprived, would suffer further due to the planned decommissioning of the nuclear power stations at Dungeness.

As a natural problem solver, she was trying to find ways to help alleviate the impact of the loss of this major employer and to find ways to bring some wealth and opportunities back to the area.

Her flash of brilliance was in making a connection between the highly prized brand of

Harris Tweed from the Outer Hebrides during a conversation with a local County Official when discussing the wool from the hardy Romney sheep, which he informed her had to be sent to Wales to be woven. This sparked the thought, why not have a Romney Tweed, made from the wool of Romney Sheep, made by local weavers that used colours inspired by the natural habitat: the marsh, sky, sea and grassland?

Joining the dots further she realised it could be a social enterprise run by local people as a CIC, a Community Interest Company, to help revitalise the area that was suffering from the hardships of unemployment due to the Power Station shutting down. Once the thought came, Pat, who had no practical experience of weaving but who did have well-connected friends, amongst them a tailor in Savile Row,

St Thomas a Becket church, Fairfield, New Romney Photo: © Ashley Fuggle





who knew many people involved in the high-end cloth industry, found avenues of help and advice. This included an introduction to C and J Antich, a Yorkshire weaving company well known for producing superb quality and world-famous worsted cloth, definitely a very useful introduction for someone bent on creating a new brand of tweed. Along with her husband,

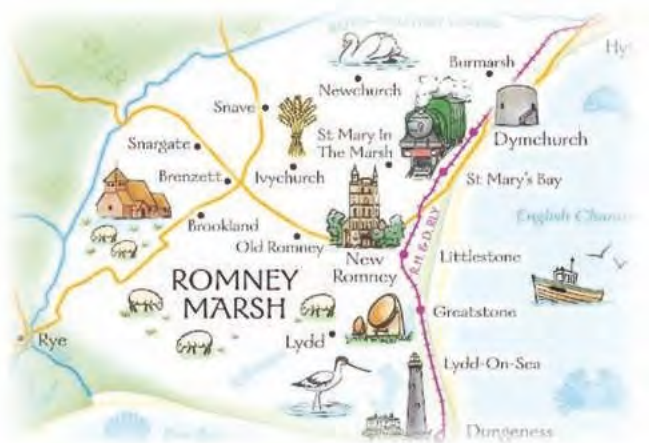
retired diplomat Robert Alston and others who were equally keen to help the local people and the area, the creation of Romney Tweed CIC began and it was established in 2014.

The journey continued with milestones reached including research and development visits to the mill in Yorkshire, which was the beginning of a long and extremely useful

relationship between the burgeoning Romney Tweed CIC and its nurturing weaving partner, that still thrives to this day. The realisation that the wool produced by Romney fleeces could be made into not just blankets and carpets, but a rather fine worsted cloth of apparel grade, saw the brand take on new heights of expectation of a future clothing line made from the fine woven threads.

Having the idea was great, but what was needed was someone with the design skills to take the plan to the next level. After discussions with a tutor on the textile design course at Central St Martins in London, Pat invited a group of the students from the course to visit the Marshes and immerse themselves in the delights of the beguiling place. The purpose of this was to give the students a design challenge on returning to the college: they had six weeks to design a tweed cloth that was the result of their inspiring trip.

It was through this process that Rosie Green, who is now the Designer and Weaver in Residence at Romney Tweed, was found. She was one of the three finalists whose designs were chosen by the judging panel. Her initial introduction to Pat and Romney Tweed has proven to be serendipitous; she stayed in touch and after graduating from her Masters, when an opportunity emerged for a collection to be created for the prestigious Royal St. George's Golf Club at Sandwich her involvement was key. Using her design skills in drawing on the colours of the flora native to the home of the



club, its rich heritage and the surrounding landscape to create the colour pallet that is evocatively woven into the tweed that is now synonymous with the famous golf club's brand.

To date Romney Tweed has launched three successful collections: Coastal, Heritage and the most recent Prospect in 2021. All purchases of the cloth support the original aim of the CIC to boost local industry as well as helping local young people gain skills and employment.

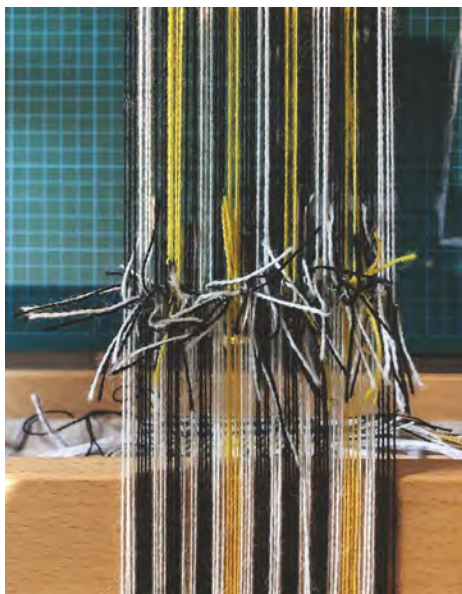
Rosie Green tells us, "Along with the very popular weaving courses for the general public, we run important initiatives in some local schools. We give young people a chance to explore our industry by giving them research projects and fashion challenges, enabling them to gain knowledge of the local heritage and of weaving and textiles. They learn about collections, create mood-boards, it's really important to foster knowledge of the industry that previously they may not have any idea about, this is a way of broadening horizons and showing them the possibility of choosing the textile industry as a future career path."

Rosie continues, "A subject that is often high on the agenda with the younger generation



and now is something that is on many people's minds is sustainability. We are very proud of being a brand with heritage and traceability; Romney Tweed is a biodegradable product, with 'cradle to grave' green credentials. We have a totally transparent supply chain, even being able to pinpoint the exact flock our wool comes from, and we have utter trust in our mills' processes, all water used is recycled and we have a zero-waste product."

The recent lockdown due to the pandemic gave the company an opportunity to focus on updating their website and to launch online sales both of their tweeds by the metre and their products which include soft furnishings, ponchos, flat caps, bags, dog collars. There are two new projects launching in Autumn 2021 a new herringbone cloth available in three colour ways, and also a bespoke personal tweed designed for the Sheriff Elect of the City of London, Alderman Alison Gowman. Rosie has worked closely with her to create a striking tartan that reflects Alison's personality with threads of postbox red and royal purple which



she will wear in her new role.

So it's onwards and upwards for this unique Community Interest Company born from altruistic ideals. The short history is already a rich and colourful pattern – long may it continue to weave its magic into a successful future. **Find out more at romneytweed.co.uk**



ORLESTONE OAK

KENT · ENGLAND

Bespoke Flooring

LONG & WIDE · PRODUCED IN KENT · FINISHED BY HAND



JOINERY



OAK FRAMED BUILDINGS



DECKING



CLADDING

For more information on pricing or fitting, or to place an order

CALL **01233 732179** VISIT **orlestoneoak.co.uk**

EMPLOYED SKILLED WORKFORCE | RENOVATIONS & EXTENSIONS
CONVERSIONS & ALTERATIONS | DESIGN & BUILD



A.T. PALMER LTD

RESTORATION SPECIALISTS EST.1949

T: 01233 770077

Smarden Business Estate, TN27 8QL

atpalmer.co.uk

SOUTHERN STONE LTD

Stonemasonry Specialists



We specialise in all areas of stone works ranging from stone cleaning to stone restoration. Our range of works include:

QUINQUENNIAL INSPECTIONS · STONE RESTORATION
GARDEN WALLING · GATE PIERS · WINDOWS · ARCHES
FIREPLACES · STEPS · PATIOS · COMPLETE STONE HOUSES
EXTENSIONS TO NEW BUILDS · POINTING

Tel: 01892 263436 • Mob: 07837 970835

Email: southernstone@live.co.uk

www.southernstoneltd.co.uk



SCRAP METAL RECYCLING

Polite & friendly service

Fully licensed

Clearance of all metals

Unfortunately we cannot take fridges or freezers

Jason 07840 081990

7 days a week



PETER JACKSON ARCHITECTS

Harbour Offices, Whitstable CT5 1AB

01227 770470

enq@peterjacksonarchitects.co.uk

ASH
SCAFFOLDING LTD

Conservation Scaffolding Specialists



Smarden Business Estate, Smarden, Ashford TN27 8QL

Tel: 01233 770373 email: info@ashscaffoldingltd.co.uk

www.ashscaffoldingltd.co.uk



OLD SMOCK MILL

The Old Smock Mill which had fallen into disrepair, after many years of neglect, has been lovingly restored by the present owners. Great care was taken not to lose the essence of the original building and it is now an unforgettable and unique place to stay, with an atmosphere of tranquility and calm.



Benenden Mill, known as a smock Mill was constructed in the early part of the 18th century to mill grain.

It was one of a pair that originally stood in the area; the other having disappeared many years ago. It was a working mill right up till the second world war when it was then used as a gunner's look out.

The mill was then neglected and although it had its sweeps cap and fantail, the elements soon decayed the timbers. The cap was taken down in the early 70s leaving only the tower, as the sweeps had by now long gone to a mill in nearby Headcorn. However, the current owners are hoping to reinstate the sweeps cap and fantail in the future (funding permitting).



After many years of neglect, it has been lovingly brought back to life by the present owners. Throughout the restoration, a great deal of care was taken not to lose the essence of the original building and it is now an unforgettable and unique place, with an atmosphere of tranquility and calm.

The Mill has eighteen inch brick walls and a white weather boarded tower which stands out on the landscape and is set in a delightful 'cottage-style' garden which can be viewed from the wide, oak staging encircling the building at first floor level. The original function of the mill is clear in the heavy beams that support the giant spur

“ The original function of the mill is clear in the heavy beams that support the giant spur wheel and throughout, original machinery together with items salvaged from the restoration work, have been preserved where possible. The result is a breathtaking fusion of ancient and modern”.





wheel and throughout, original machinery together with items salvaged from the restoration work, have been preserved where possible. The result is a breathtaking fusion of ancient and modern – the interior is a floral-filled circular space that pays homage to trendy cottagecore style, with elegant soft furnishings.

Nestled among this wooden kingdom is one bedroom and one bathroom, complete with a free-standing bath. There are also quaint reminders of its industrial past, with massive preserved wooden beams spanning each floor carrying the original giant spur wheel and sack hoist.

The mill can accommodate two persons and is available for holiday lets.

For more information and to make a booking, visit www.oldsmockmill.com.







SPECIALISTS IN ROOFING



Canterbury Roofing and Building is a family-run business with over 35 years' experience working in Kent and surrounding areas. We have vast experience of conservation and other roofing works.

- Guttering
- Flat roofing
- Velux and sky lights
- Conservation work
- Tiling
- Pointing and chimney work
- Slating
- Lead Work



**FOR MORE INFORMATION
AND TO CONTACT US:**

www.canterburyroofing.com

Tel: 01233 647867

or 07976 325520

info@canterburyroofing.com



CO-EDUCATIONAL | 13 - 18 YEARS | DAY & BOARDING

“A thriving academic school in exquisite surroundings
steeped in history, with highly motivated
pupils who are hungry to learn”

THE
GOOD
SCHOOLS
GUIDE

The King's School

We take a look at the long and illustrious history of The King's School in Canterbury; one of the oldest schools in the world.

With origins dating back to 597AD, The King's School, Canterbury is reputedly the oldest school in the world.

It is also one of the country's leading co-educational day and boarding schools located in the idyllic surroundings of the Precincts of Canterbury Cathedral (a UNESCO World Heritage Site), just one hour from Central London.

The School buildings are steeped in history with interesting and quirky tales from their past which make the School a truly unique place to live and learn.

The main entrance to the School, The Mint Yard Gate, was built in 1864 following the demolition of the old almonry building and leads into The Mint Yard, a mixed quadrangle of classrooms and boarding houses named after a short-lived sixteenth century royal mint.

The Grange, a former boys' boarding house was built on the granary ruins as a family house in the 1840s. It incorporates architectural features from the old Archbishop's Palace. Above



the main entrance are the arms of Cardinal Pole which acknowledge that he gave the Mint Yard to the School.

The Norman Staircase is one of the most painted, photographed and admired sites in Canterbury. As its name suggests it dates back to the 12th century. For formal occasions the School traditionally gathered here. Archbishops of Canterbury addressed the School from the Staircase during Visitations and King George VI, accompanied by Queen Elizabeth and Princess Elizabeth, presented the School's Royal Charter to the Dean on 11 July 1946.





The Dark Entry forms the link between the Green Court and the rest of the Precincts and the Cathedral. It was built in the late 14th century.

The Dark Entry is supposed to be haunted by the ghost of Nell Cook. R.H. Barham in *The Ingoldsby Legends* recounts 'A King's Scholar's Story' about a Canon in 'bluff King Harry's days' and his cook. Nell is buried alive and haunts the Dark Entry.

Linacre House is now a boys' boarding house. It is a fine Georgian building, incorporating part of the medieval prior's lodging. Horatio Nelson's brother William was a Canon here from 1803 to 1835, and Lady Hamilton visited him. It was later used by the Royal School of Church Music.

Meister Omers, popularly known as MO, is a boys' boarding house. It was built in the fifteenth century by Cardinal Beaufort and has one of the widest fireplaces in England. Edward IV held a Parliament here in 1470. Cardinal Coligny is said to have died here in suspicious circumstances in 1568, and the arms of Queen Elizabeth, originally in an upstairs dormitory but now in

the hall, probably mark her visit in 1573.

Abbot Fyndon's Great Gate, the entrance to St. Augustine's, forms part of the remains of the first Benedictine Abbey in England, established around AD598 following the arrival of Augustine of Canterbury, a Benedictine monk who became the first Archbishop of Canterbury.

It was rebuilt from 1301-1309 by Abbot Fyndon. In 1625 Charles I and Henrietta Maria stayed in the State Chambers over the gateway arch on their wedding night, following their marriage in Canterbury Cathedral. Elizabeth I is also reputed to have been welcomed to the State Chambers. After the abbey was dissolved by Henry VIII the abbey buildings were converted to a number of other uses. The gatehouse served for some time as a brewery under the ownership of Messrs. Bennett and Beer, who produced St Augustine's beer (naturally!).

The school has Open Mornings each term for prospective pupils and their families. To register your interest please visit - <https://www.kings-school.co.uk/admissions/open-mornings/>



SUTTON VALENCE SCHOOL

The heart of Kent education, where each
cares for all and individuality is cherished



Co-educational independent day and boarding school for pupils from 2 - 18 • Set in acres of stunning Kent countryside • Central boarding accommodation in the heart of the Senior School with extensive facilities • First independent preparatory school in Kent to receive a Quality Mark for Early Years provision • Little Lambs Nursery for children 2 - 4

Visit our admissions page for more information - svs.org.uk

Call us on (+44) 0 1622 845200

Email our Admissions department at admissions@svs.org.uk





The Oast House, Wickhambreaux

Situated approximately four miles east of Canterbury, Wickhambreaux is a charming and picturesque Kent village.

The oast was originally built in the 1700s, and was converted into a spacious and comfortable home in the 1970s and is Grade II listed.

The entrance porch has a slate floor and leads into an impressive, triple aspect, open-plan living space with a study, an open fire and attractive original oak beams.

In 2018 the owners extended the living space with a large timber conservatory with an

attractive stone floor and lovely views over the west-facing garden.

The kitchen is spacious with a good selection of wall and base units, and a door leading onto the garden.

The first floor has five well-proportioned double bedrooms, a family bathroom and a separate shower room. A further staircase leads to a huge sixth bedroom/playroom that runs the full depth of the house and lends itself to creating an ensuite master/guest bedroom (subject to the usual consents). From this room

An exceptional detached oast house conversion, situated in the charming and picturesque village of Wickhambreaux.



there is access to a large loft in the roof space of the square kiln.

The property benefits from an integral garage (currently used as a gym) and has off-road parking for two cars. At the rear is a large Portland Stone patio leading to a glorious expanse of garden which is mainly laid to lawn with mature trees and shrubs. At the rear of the garden is a large workshop/home office with power, electric heaters and wifi. This fantastic home is extremely spacious, beautifully light and has an abundance of character.

The details

Large open-plan reception room

- Kitchen • Conservatory • Integral garage •
- Five bedrooms • Bedroom/playroom
- Large garden with patio, lawn and shrubs •
- Workshop/home office

Strictly by appointment with Godwin Curtis Ltd on 01227 780700.

Price: £1,000,000

sales@godwincurtis.co.uk

www.godwincurtis.co.uk







5-7 days
a week



Old English Tools



Bench planes, chisels, felling axes, bill hooks, froes, draw
shaves, side axes, early garden tools, blacksmith tools,
pine boxes. Cast iron log burners and fire grates.

Tools old and new bought for cash. Workshops cleared.

Essential business with restrictions.

Faversham Standard Quay, ME13 7BS

BLACKSMITHS' ANVILS WANTED

Call Phil on **07796 343722 / 07850 292523**

www.countryclobberltd.co.uk



Find us on:
facebook
OLD ENGLISH TOOLS

**We are the UK's leading
restorer and repairer of
traditional, distinctive
oast cowl & kiln roofs.**

New cowl construction. Painting
& cleaning. Repair & maintenance.
Also specialising in Kent peg tile
roof repairs and kiln tile repairs.

Trusted over four family
generations by royalty, businesses
& homeowners alike.



Book a no-obligation visit
01622 725 898 / 07973 332 790
www.dudeandarnette.co.uk



**DUDE &
ARNETTE**
OAST COWL CONSTRUCTION



Oast owners

MACKNADE

— AT —

HOOPERS

ALL DAY DINING EXPERIENCE

OPENING 7TH SEPT IN TUNBRIDGE WELLS



**DISCOVER US ON THE SECOND FLOOR
OF HOOPERS DEPARTMENT STORE**

2-12 Mount Pleasant Rd, Tunbridge Wells, TN1 1QT

01892 502807 | www.macknade.com | [t](#) [f](#) [i](#) [y](#) @macknade

QUALITY & COMMUNITY SINCE 1847

Kentish

FOOD • DRINK • PRODUCE

Local & loving it!

Our county is packed full of fine food and drink. From furrow to orchard, from marsh to shore - Kent is crammed with foodie delights.

Fabulous locally produced food includes just-caught fish; superb oysters; tender Romney Marsh lamb; sweet soft fruit and tangy apples. Wash it down with locally-made, world-class wine; a crisp cider or a traditionally brewed beer.

All this makes Kent an outstanding place to eat out. From contemporary Michelin-starred restaurants to characterful eateries graced by log fires or stunning sea views. Kent offers everything from fine dining and gourmet Asian cuisine, to great grub in rural pubs.

Kent is also renowned for its orchards abundant with apples, pears and cherries. Fertile soil, a favourable climate and centuries-old expertise create prime growing conditions.





Oysters

Whitstable is renowned for its oysters and the local industry dates back to the 1400s. They used to be a cheap local food, but these days are thought of as something of a delicacy. One traditional way to enjoy them is as part of the Whitstable Dredgerman's Breakfast which is two doorstops of toasted bread with oysters and thick slices of fried bacon.



Traditional Kentish fayre

Huffkins

The huffkin is notable for the small indentation in the middle, made by the baker's thumb. Enjoy the huffkin on its own, or fill the indentation with a fresh cherry, a spoonful of jam, or a dollop of whipped cream. You often also find them filled with bacon as a lunchtime snack.

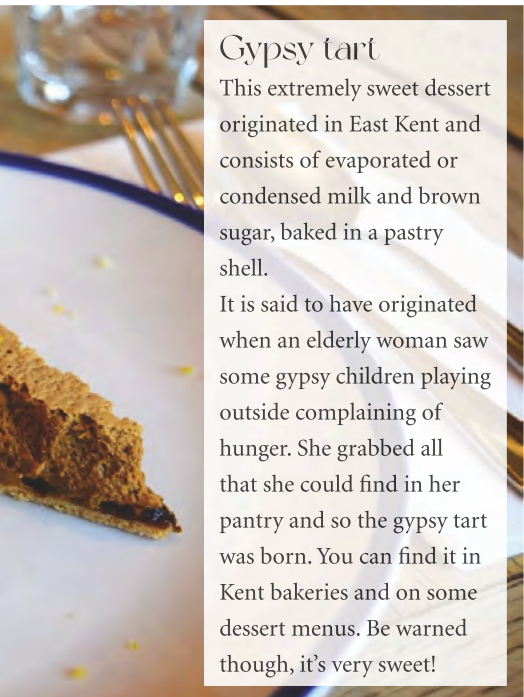


Kent has long been known as the Garden of England, and with good reason. Its location makes it a rich source of many different foods.

Cobnuts

This regional variety of the hazelnut is not as commonly grown as it was 100 years ago although it is making something of a comeback. Cooks can use cobnuts in many ways, including roasting them and mixing them with ginger in a cake.





Gypsy tart

This extremely sweet dessert originated in East Kent and consists of evaporated or condensed milk and brown sugar, baked in a pastry shell.

It is said to have originated when an elderly woman saw some gypsy children playing outside complaining of hunger. She grabbed all that she could find in her pantry and so the gypsy tart was born. You can find it in Kent bakeries and on some dessert menus. Be warned though, it's very sweet!



Canterbury apple pie

Some of the earliest known recipes for apple pie date back to Chaucer's time and the modern Canterbury apple pie is most likely an adaptation of those early recipes. It is an open-faced tart, made with both dessert and cooking varieties. If you want to follow the medieval versions, add saffron for a rich golden colour.



Beer and hops

Hops have been grown in Kent since the 1500s. Throughout the late 1800s and the first half of the 20th century, families from London's East End would flock to Kent for a working holiday to pick hops. Although hop-picking is now automated, oast houses, traditionally used for drying, still dot the Kent landscape as do plenty of small craft breweries.

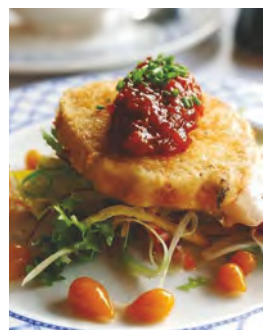


Dover sole

The stretch of the English Channel between Kent and France has long been a fertile fishing ground. Dover sole is one of the flat fish that are plentiful in this area and so popular on many a dinner plate. They are often served grilled or fried with a lemon garnish and some locally-grown potatoes.



OPENING TIMES
 Lunch: Tue - Sun 12 noon - 2.30pm
 Evenings: Tue - Mon 6pm - 9.30pm



Birdies is one of Whitstable's oldest family run restaurants, serving brilliant locally caught fresh fish features alongside great French classics.

41 Harbour Street, Whitstable CT5 1AH Tel: 01227 265337
www.birdiesrestaurant.co.uk

THE OLD NEPTUNE

Marine Terrace, Whitstable CT5 1EJ
 01227 272262 • www.thepubonthebeach.co.uk



OPENING HOURS

Mon - Wed: 11.30 - 10pm Thurs - Sat: 11.30 - 11pm
 Sun: 12 noon - 9pm

Food served all day Saturday & Sunday from 12-4pm
 Mon - Fri 12 noon - 4pm & 5pm - 8.15pm



LIVE MUSIC

Sundays 6-8 pm

Oct 3 & 10:

Mickey Blue Eyes

Oct 17: Blues Devils

Oct 24: Bob Dylan tribute

Oct 31: Halloween Party
 with Big orange Head

Nov 7: Steve Bolton

Nov 14: Nightwatch

Nov 21: Bill Dan & Saxby

Nov 28: Ivan's Allstars



THE RED LION HERNHILL



*Enjoy a picturesque English Pub
set in the Hamlet of Hernhill*

LOCATED IN BETWEEN FAVERSHAM, CANTERBURY AND WHITSTABLE



RESTAURANT

- Delicious Traditional Dishes
- Local Produce
- Sunday Lunches



FUNCTION ROOM

- Crown Post Restaurant
- Hosts up to 50 guests
- Special Occasions
- Family Gatherings



THE PUBLIC HOUSE

- Wide range of beers, ales, wines and gins
- Dog Friendly
- Customer Car Parking



LARGE BEER GARDEN

- Seating area
- Sun trap
- Petanque Court

☎ 01227 751207

✉ tables@theredlionhernhill.co.uk

CROCKHAM LANE, HERNHILL, NR FAVERSHAM, KENT ME13 9TU

theredlionhernhill.co.uk

📘 @theredlionhernhill

📷 @hernhillredlion

OPEN HOURS

Wednesday to Saturday:
11am–10.30pm

Food:
Noon–2.30pm | 6pm–8.30pm

Sunday: 11am–7pm

Food: Noon–4pm



In one of the many affectionate letters Austen wrote to her sister Cassandra, Austen describes how a dinner at an inn of ‘asparagus and a lobster... made me wish for you’. This is the recipe to have up your sleeve when you want to impress: lobster tails with a creamy, cheesy filling alongside buttery asparagus is a combination that all your guests will be sure to love.

Jane Austen's Table

Jane Austen's Table brings readers a sumptuous array of recipes that capture all the spirit and verve of the food of Jane Austen's world and the Regency era, adapted and reimagined for the modern day. Including recipes such as Netherfield White Soup, Box Hill Picnic Pies, General Tilney's Hot Chocolate, and Summer Berry Delice, this beautiful collection of over 70 recipes provides an irresistibly charming experience of Austen's novels like no other.

**SERVES
FOUR**

CASSANDRA'S LOBSTER & ASPARAGUS

YOU WILL NEED

55g butter
1 tablespoon olive oil
1 shallot, finely chopped
3 tablespoons dry sherry
1 teaspoon Dijon mustard
110ml soured cream
2 small ready-cooked lobsters, about 600g each
45g shredded Gruyère cheese
450g asparagus spears, trimmed
salt and black pepper

METHOD

1. Heat half the butter and oil in a small saucepan. Add the shallot and cook for 5 minutes until softened. Pour over the sherry and cook for 2 minutes until nearly boiled away. Stir in the mustard and soured cream, heat through and season with salt.
2. Meanwhile, using a large knife, cut the lobsters in half lengthways. Remove the meat from the tail and claws, reserving the main shell halves. Cut the lobster meat into large chunks.
3. Add the lobster meat to the sauce and warm through. Carefully spoon into the tail cavities of the reserved lobster shell halves and sprinkle with the Gruyère. Cook under a preheated hot grill for 3–5 minutes until golden and bubbling.
4. Meanwhile, place the asparagus in a frying pan over a medium heat and add just enough water to cover the base of the pan. Put the lid on and let the asparagus steam for 3–5 minutes until tender. Add the remaining butter and toss the asparagus in the butter as it melts.
5. Season with salt and pepper and serve with the lobster.



Given the importance of rosewater in the Georgian household, the cutting and drying of roses was one of the important tasks of the summer garden. In Mansfield Park, the put-upon heroine Fanny Price is given the Cinderella-like job of cutting roses in the full heat of the day, then taking them across the park to be dried in her Aunt Norris's home.

This recipe uses the rosewater of which the Georgians were so passionately fond.

Serve sprinkled with chopped rose petals for an extra touch of Regency romance

MAKES EIGHTEEN

YOU WILL NEED

175g unsalted butter,
melted and cooled, plus
extra for greasing

3 large egg whites

pinch of salt

150g almond flour

100g plain flour, sifted

150g caster sugar

1 teaspoon rosewater

5–7 pieces (85g) rose-
flavoured Turkish
delight, chopped

edible rose petals, to
decorate

For the rosewater cream

275ml double cream

1 teaspoon rosewater

½ teaspoon vanilla bean
paste or extract

30g icing sugar, sifted

METHOD

1. Lightly brush 18 holes of two 12-hole madeleine tins or mini muffin tins with melted butter.
2. Whisk the egg whites and salt in a large, clean bowl with a handheld electric whisk until they form soft peaks, then gently fold in the almond flour, plain flour and sugar. Fold in the melted butter, rosewater and Turkish delight.
3. Spoon the mixture into the prepared tins and bake at 220°C for 8–10 minutes until risen and golden.
4. Meanwhile, make the rosewater cream. Whip all the ingredients in a bowl with a handheld electric whisk until soft peaks form, then place in a serving bowl.
5. Remove the cakes from the oven and transfer to a wire rack to cool slightly. Serve with dollops of the rosewater cream and decorated with edible rose petals.

WIN A COPY OF JANE AUSTEN'S TABLE



To be in with a chance of winning
please send your name, address and
telephone number to
dawn@conservationnews.co.uk.

Closing date: Tuesday, 30 November 2021

Jane Austen's Table by Robert Tiesley Anderson
is published by Pyramid on 7th October (£16.99)



These rosewater-infused cakes are studded with chunks of Turkish delight and have a delicate floral flavour. If you can't find edible rose petals to decorate, chopped pistachios are a lovely topping too.

CHRISTMAS
bookings now
being taken



THE OYSTER PEARL

PUB & RESTAURANT



**FOR LOCALLY SOURCED & FRESHLY
PREPARED DISHES EVERY DAY**

British and Pan-Asian cuisine. Serving high quality and creative dishes
We offer diners a safe environment with hand sanitisers, social distancing measures and full table service.



185 FAVERSHAM ROAD, WHITSTABLE CT5 4BJ • TEL: 01227 272705

WWW.THEOYSTERPEARLRESTAURANT.COM



THERE'S A NEW GIN IN TOWN

WHERE THE WORLD IS YOUR OYSTER



WHITSTABLEHARBOURGIN.CO.UK

AVAILABLE IN WHITSTABLE FROM:

The Old Neptune	The Offy
The Rose in Bloom	Cafe & Kitchen
Samphire	The Handsome Sam
The Quayside	The Fountain
The Rock Lodge	The Pearson's Arms
The Prince Albert	

OUR PREMIER BATCH DISTILLED JUNE 21ST

SMALL BATCH LONDON DRY

WHITSTABLE HARBOUR GIN

WHERE THE WORLD IS YOUR OYSTER

OTHER STOCKISTS

Judd's Folly, Faversham
The Royal Oak, Blean
Murray's General Stores at
The Goods Shed, Canterbury
The Maiden's Head, Canterbury
Sholden Village Stores, Deal
Gibsons Farm Shop, Wingham
Westgate & Birchington Golf Club
The Pelton Arms, Greenwich
The Shortlands Tavern, Bromley
The Two Doves, Bromley
The Bricklayers Arms, Chipstead



BLACKSMITH'S *Arms*

17th century village pub, near the Pilgrims Way, set in rolling downland countryside. An inglenook log fire gives a warm welcome in winter. Good quality, locally sourced food served.

No children under 14 allowed in bar or restaurant.

No vegetarian options available.

Wednesday - Saturday, 7pm - 11pm (must pre-book for food)
Sunday 4pm - 11pm. No lunches being served at present.

The Street, Wormshill, Sittingbourne ME9 0TU
Tel: 01622 884386

HERMAN'S PLAICE



UNIT 10, STANDARD QUAY,
FAVERSHAM, ME13 7BS



**WE HAVE ONE OF THE LARGEST
SELECTIONS OF FRESH AND FROZEN
FISH & SEAFOOD IN KENT**

Tel: 01795 591075

Open: Tue-Sat, 9am - 5pm | Sun, 10am - 4pm

Please shop local & support small independent businesses.

LOWER HARDRES FARM SHOP

- In-house butchery
- Free-range geese; chickens; local game, pork, beef and lamb
- Fresh local produce
- Fruit, vegetables and salad, sourced as locally as possible
- Cheese and deli products
- Stockist of The Chai Stop finest curries
- Seasoned logs, coal and kindling
- Skinners dog food; bird food
- Local wines and ciders

**Christmas
orders being
taken**



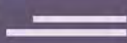
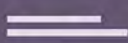
**www.lowerhardresfarmshop.co.uk email: info@lowerhardresfarmshop.co.uk
Lower Hardres Farm, Lower Hardres, Canterbury CT4 5NU Tel: 01227 700947**

WORGAN'S FARM SHOP

Independent farm shop and butchery bringing
the best from local farms and further afield



Free Range Bronze Turkeys from Greenhill Farm, Otham, Nr Lenham.
NOW TAKING CHRISTMAS ORDERS.



Worgan's Farm Shop

Frog Lane, Bishopsbourne, Canterbury CT4 5HU

Open Tuesday to Saturday, 8am - 4pm

Tel: 01227 832814



— LOCAL —
Farmers' markets



Support your local farmers' market

For more information and to find out what's in season visit www.kfma.org.uk.

SEPTEMBER

WEDNESDAY: 1st, 8th, 15th, 22nd & 29th Rye

THURSDAY: 2nd, 9th, 16th, 23rd & 30th
Hastings; Rolvenden; Shipbourne

FRIDAY: 3rd, 10th, 17th, & 24th
Egerton; Sevenoaks; Tenterden

SATURDAY: 4th
Deal; Gravesend; Penshurst;
Tunbridge Wells; Whitstable
Castle; Wye

SUNDAY: 5th
Tunbridge Wells (Pantiles)

SATURDAY: 11th
Bridge; Deal; Gravesend; Hythe;
Tunbridge Wells; Whitstable

SUNDAY: 12th
Herne Bay; Lenham; Tonbridge;
Tunbridge Wells

SATURDAY: 18th
Deal; Gravesend; Tunbridge Wells;
Wye

SUNDAY: 19th
Aylesford; Rochester;
Tunbridge Wells

SATURDAY: 25th
Bridge; Deal; Gravesend; Hythe;
Knockholt; Tunbridge Wells;
Whitstable

SUNDAY: 27th
Cliftonville; Tunbridge Wells

OCTOBER

FRIDAY: 1st, 8th, 15th, 22nd & 29th
Egerton; Sevenoaks;
Tenterden

SATURDAY: 2nd
Deal; Penshurst;
Whitstable Castle; Wye

TUESDAY 5th, 12th, 19th & 26th
Capel-le-Ferne;
Hildenborough

WEDNESDAY: 6th, 13th, 20th & 27th
Rye

THURSDAY: 7th, 14th, 21st & 28th
Hastings; Rolvenden, Shipbourne

SATURDAY: 9th
Deal; Hythe; Whitstable

SUNDAY: 10th
Herne Bay; Lenham; Tonbridge

SATURDAY: 16th
Deal; Wye

SUNDAY: 17th
Aylesford; Rochester;
Watlingtonbury

SATURDAY: 23rd
Bridge; Cranbrook; Deal;
Hythe; Whitstable

SATURDAY: 30th
Deal; Tunbridge Wells

NOVEMBER

TUESDAY: 2nd, 9th, 16th, 23rd & 30th
Capel-le-Ferne; Hildenborough

WEDNESDAY: 3rd, 10th, 17th & 24th Rye

THURSDAY: 4th, 11th, 18th & 25th Hastings; Rolvenden;
Shipbourne

FRIDAY: 5th Egerton; Sevenoaks;
Tenterden

SATURDAY: 6th Deal; Penshurst;
Tunbridge Wells; Whitstable
Castle; Wye

SUNDAY: 7th
Tunbridge Wells

FRIDAY: 12th
Egerton; Tenterden

SATURDAY: 13th
Bridge; Deal; Hythe; Tunbridge
Wells; Wye

SUNDAY: 14th
Herne Bay; Lenham; Tonbridge;
Tunbridge Wells

SATURDAY: 20th
Deal; Tunbridge Wells; Wye

SUNDAY: 21st
Aylesford; Rochester; Tunbridge
Wells; Watlingtonbury

SATURDAY: 27th
Bridge; Cranbrook; Deal;
Hythe; Whitstable

SUNDAY: 28th Cliftonville



CHILHAM SHOP

Farm shop & plant centre

Canterbury Road, Chilham CT4 8DX

Tel: 01227 730348 | chilhamshop.co.uk

FREE LOCAL DELIVERIES

Serving Chilham and the surrounding villages for over 35 years with a wide range of fresh, fruit, vegetables, cut flowers, garden plants as well as a good selection of general groceries, dairy, bakery, frozen foods and much more.

Mon to Sat: 8:30am to 6pm Sun: 9am to 5pm. And Chilham Post Office



FREE DELIVERY to Chilham and neighbouring villages



Bull Green,

Bethersden TN26 3LB

Tel: 01233 822463

Email: Shop@BullGreenFarm.co.uk

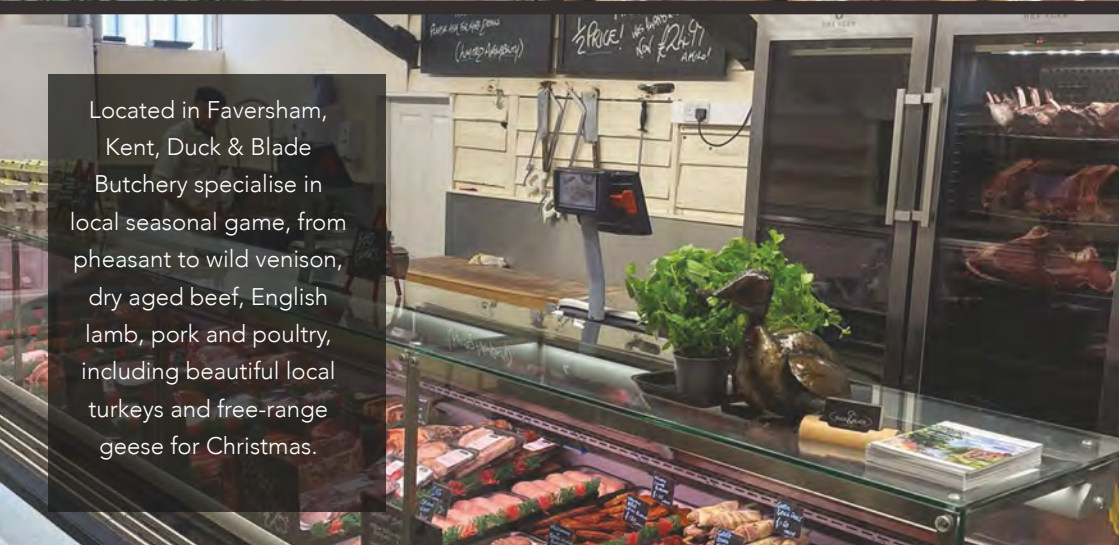
We are a family-run farm rearing Dexter cows, sheep and chickens. We believe animals should be able to roam free in the fields and enjoy fresh air and green grass.

We have a nicely stocked shop with fresh eggs daily, home grown veg, and a variety of local products such as Kentish honey, jams, and occasionally freshly baked cakes. We also have a freezer packed with locally made pies and tasty treats.





Located in Faversham, Kent, Duck & Blade Butchery specialise in local seasonal game, from pheasant to wild venison, dry aged beef, English lamb, pork and poultry, including beautiful local turkeys and free-range geese for Christmas.



For enquiries/orders contact us on enquiries@duckandblade.co.uk or 01795 602106
Riggers Gallery • Standard Quay • Faversham ME13 7BS

A bumper selection of some of Kent's finest produce is waiting to be discovered in this carefully curated hamper. Inside, the Macknade team have included Kentish wine, pale ale and cider alongside myriad sweet and savoury goodies.

Best Of Kent
£100

Posh Pub Snack
Box £50



For further details and to order online please
visit www.macknade.com

Handpicked by the Macknade experts, this selection of spirit miniatures offers an exciting flavour journey from Negroni to whisky via gin and vodka, from the clever people at the Copper Rivet Distillery in Chatham, Kent and rum, courtesy of the folks at Arcanist. Now, pass us the cocktail shaker!

The Spirited Selection £35



The Perfect Gesture. £60-£73



Say thank you with the Perfect Gesture, a gifting hamper featuring Simpsons Chalklands Classic Cuvee, delicious chocolates and pampering treats. You can choose to add more products from the fabulous team at Floragy, including face oil and handmade soap, to make this a bumper gift for an extra special person.

The Macknade Team have a serious passion for gin, especially the kind that is distilled just a few miles from their flagship store in Kent! This box contains a large bottle of Ranscombe Gin, which is crafted using local botanicals and reclaimed recipes from the past by the clever folk at Maidstone Distillery.

Gin & tonic gift box. £60



Available in store and online, macknade.com, the new additions feature the very best foodie treats and gorgeous goodies from Kent and further afield.

Wines of provenance

Simpsons settled for nothing less than the finest parcels of land in southern England to plant the vines for their exceptional English sparkling wine.



Simpsons Wine Estate was established in 2014 and is situated in the Kent North Downs about six miles outside Canterbury and ten miles from Folkestone and surrounded on all sides by the Kent coast. The vineyards benefit from the sunny, warm, sheltered slopes where the vines are planted on chalky soils known internationally for being conducive to producing world class sparkling wines.

Charles and Ruth Simpson, owners of the vineyard, wanted to bring their expertise and knowledge from their vineyards in the Languedoc region of Southern France, where terroir and top class viticulture allows the true expression of the grapes, to their vineyards here. They believe that with each sip of their delicious wines you will truly experience the beauty and provenance of the Kentish Downs.

The wines

Their Chalklands Classic cuvee (2018) truly reflects these exquisite characteristics of the North Downs with their first release (2017) winning a gold medal at the 2019 Champagne and Sparkling Wine Championships. They also produce a limited edition Magnum (2017) which has undergone extensive lees ageing adding richness and complexity.

Amongst their still wine selection, their Roman Road Chardonnay has an intense,

complex nose of tropical and citrus fruit with subtle butterscotch – combined with an elegant minerality and refreshing acidity; this Chardonnay is not to be missed!

Their Rabbit Hole Pinot Noir (2020) is on its third vintage and sells out really quickly. Dark cherry and smoky oak aromas with undertones of mocha and freshly ground coffee it's a lovely accompaniment to Roast Lamb or Venison. As well as the Railway hill rose also made from Pinot Noir, they produce a Derringstone Blanc de Noir Pinot Meunier (2020). Vinified off the skins as a white wine, it has a very unique character with a distinctive, creamy mouthfeel with both sweet and savoury aromas of poached winter fruit and balsamic nuances.

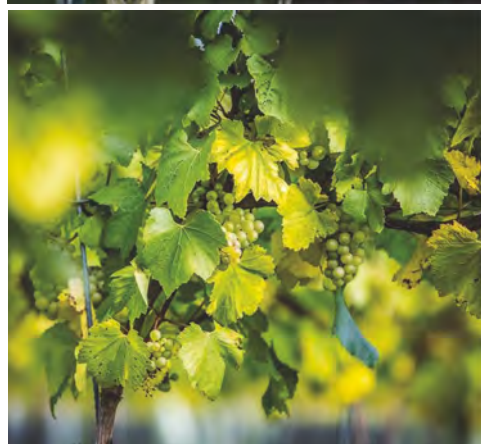
Tours and tastings

At the time of writing – all the weekend tours and tastings are fully booked, but there are currently spaces on their weekday afternoon tastings which cost £10 per person available from September and lasting 90 minutes. They are considering running more weekend tours, but those will be decided after harvest in the Autumn. It may be worth checking their website for up to date information

www.simpsonswine.com

The Barns, Church Lane, Barham, Canterbury CT4 6PB. Tel: 01227 832200

Rowena Hawtin (DipWSET) #thewinelady





SAM'S

FREE RANGE TURKEYS



Our turkeys are reared to the highest welfare standards, and are free to range the meadow and grassland which makes up nearly four acres of land.

Traditionally prepared by hand, having hung for a minimum of 14 days, your turkey is guaranteed to be of the highest quality and oven-ready for your special day. Our birds are available either whole or as a crown.

ORDER NOW

Tel: 07742 667491

Wey Street Farm

Faversham ME 13 9JB

email: info@samsturkeys.co.uk

www.samsturkeys.co.uk



COPPERS BISTRO



Café ✦ Kitchen ✦ Bar



SATURDAY 30TH OCT

Disco & buffet, 7pm, £14.95pp

Fright Night Halloween party

Call to book

CHRISTMAS & NEW YEAR PARTY NIGHTS

26TH NOVEMBER

Disco & buffet, £24.95 pp

3RD DECEMBER

4-course meal with music from
ABBA tribute band Abbalicious,
£39.95 pp

10TH DECEMBER

4-course meal with music from
Tina Turner tribute act
Kirstie Curtis, £39.95 pp

17TH DECEMBER

4-course meal with music from
Soul & Motown act Leslie P George,
£39.95 pp

*£10pp deposit payable on booking, Menu
pre order at least a week prior to event.*

Please inform of any dietary requirements.

31ST DECEMBER, 7.30PM

Welcome drink; hot & cold 2-course
buffet; music and toast at midnight
included. Music from Keith Rush
£49.95 pp

*£15pp deposit payable on booking, Please
inform of any dietary requirements.*



EVENING EVENTS

Now open every Friday, Saturday and
Sunday evening for dinner

The Street, Preston, nr Wingham, Canterbury CT3 1ED



Tel: 01227 728580





Beautifully handcrafted,
thoroughly bespoke kitchens.

Old Surrenden Manor, Bethersden, Kent.

www.collinsbespoke.com

COLLINS  BESPOKE