

CONSERVATION NEWS

Kent

Winter 2021 • Complimentary

WONDERFUL
window treatments

How to get the
most out of your
garden in winter

Ashford & Cranbrook RoofingTM

— Experts in heritage roofing —



Now producing hand-made clay Kent Peg tiles for our customers

www.cranbrookroofing.co.uk



Tel: 01580 242925



Appleby • Grange

Fine bespoke kitchens • Handmade by local craftsmen

applebygrange.co.uk • Tel: 07779 809229



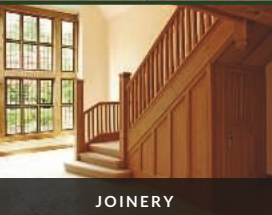
ORLESTONE OAK

KENT · ENGLAND



Bespoke Flooring

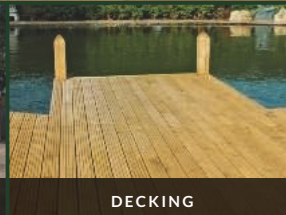
LONG & WIDE · PRODUCED IN KENT · FINISHED BY HAND



JOINERY



OAK FRAMED BUILDINGS



DECKING



CLADDING

For more information on pricing or fitting, or to place an order

CALL **01233 732179** VISIT **orlestoneoak.co.uk**

Welcome

Winter 2021



Are you a winter person or a summer person? Do you love the crunch of frost under your boots or do you long for the days when you can run barefoot through the grass? Here at Conservation News we embrace every season as inspiration to create a new, exciting edition of the magazine, but we know that dark days and long nights can leave some people struggling.

If you're one of those people then browse through our magazine to bring some warmth into your life and read about all the good things that winter can bring. If you're already a fan of the colder weather then let our articles remind you of why you love this season!

We've got the low down on winter gardening, places to visit in Kent and a special feature on exploring the history of your property, plus many more articles, ideas and tips for making the most of your home.

So read on and enjoy this wintery edition of Conservation News!

Dawn

Competition winner from Autumn 21: Mrs A Crosbie-Cowley, Bearsted



CONSERVATION NEWS
conservationnews.co.uk

Publisher
Conservation News

Contributors
Rowena Hawtin
Tina Marshall
Liz Norton
Louise Tomlin

Design
Lynn Fasulo

Editor/Sales Manager
Dawn Long
Tel: 07725 732535
dawn@conservationnews.co.uk

Cover image
Instagram: tale_victoria
© Conservation News 2021
Printed in the UK by Pensord



If you receive your copy of Conservation News by Royal Mail and wish to opt out of our mailing, please send an email to dawn@conservationnews.co.uk

All rights reserved.
Reproduction of any part of this magazine is not permitted without written permission of the publisher.
The publisher accepts no responsibility of any loss or damage in respect of any product or service that may be advertised.



Copperfields

OF WHITSTABLE

Cookshop & Homewares Since 1956

Inspiration for your kitchen and home



Cookware • Homeware • Gifts • Bakeware • Furniture • Electrical • Cards

shop@copperfieldsofwhitstable.co.uk • www.copperfieldsofwhitstable.co.uk
93 - 95 High Street • Whitstable • Kent • CT5 1AY • Tel: 01227 273519

OPEN 7 DAYS A WEEK



Winter 2021

Contents



- 8 **Winter gardening**
What to do in the garden now
- 18 **Heavenly Hellebores**
A star performer in the winter garden
- 22 **Winter warmers**
Using your garden in winter
- 29 **A very British craft**
Rediscovering traditional British crafts
- 39 **Dressing up**
Wonderful window treatments
- 47 **St John, Rye**
The transformation of a former St John ambulance station
- 63 **Kent Manor House**
A restoration case study by Clague Architects
- 72 **Home history**
Tips and advice on researching the history of your home
- 106 **Winter warmers**
Two lovely recipes for cold winter days
- 112 **Rowena's wine column**
Vino wine shop & tastings

47



63



18



112

106



39





BOXING CLEVER!

It's during winter that evergreens really come into their own. But *sarcococca*, more popularly known as Christmas box, has more to offer than just neat glossy leaves. From late December onwards *sarcococcas* produce masses of creamy-white flowers. They might not be spectacular to look at, but they emit an intense honeyed perfume. Unlike true box (*buxus*), *sarcococcas* are immune to box blight and thrive in shade.

Pared-back beauty

The National Trust's Sissinghurst Castle Garden is open during winter, allowing visitors to enjoy the architectural structure and pared-back beauty of this celebrated garden. It is in winter that the brilliance of Harold Nicolson's design comes to the fore.

Head Gardener Michelle Cain said: "We'd love to change the perception that gardens are only interesting in summer."

In winter, the clever use of hedges, used to define the now-famous series of garden rooms, is particularly obvious. And with the abundant flowers and foliage of the high season pared back, the long vistas take centre stage.

Garden NOTES



Winter doesn't have to be white in the garden, even if there is a blanket of snow covering the soil. Most of the colour comes from berries: hollies, firethorn, and other winter-fruiting plants that add unexpected splashes of reds and oranges to your winter garden.



Winter wonders

At this time of year birds become bolder, venturing into gardens in search of scraps and well-stocked bird tables. Keep feeders full of calorie-rich food such as peanuts, sunflower hearts and suet products. Put seed mix, chopped apples and grated cheese on ground-feeding stations for robins, thrushes and blackbirds and leave the seedheads on herbaceous plants such as fennel, Verbena and echinacea for birds such as sparrows and goldfinches. Finally, don't forget January marks a really important event for the UK's garden birds at is the RSPB's Big Garden Birdwatch.



TREES FOR WINTER GARDENS

Fruit trees are good because they don't grow too big. Choose trees with spring blossom and autumn colour, or ones that hang onto fruits and berries for a long time. Crab apples are perfect and are great even in small gardens. Malus 'Gorgeous' looks particularly lovely with its masses of white flowers in spring and long-lasting colourful fruits that resemble the most perfect miniature apples, and hold well into November. They're also ideal for making a tangy, pink jelly.

CONTAINER COLOUR

As the days close in and the first frosts arrive, bedding plants will need removing and replacing if the garden is to offer much winter colour. Here are some of our favourite container plants to brighten up your winter pots.

- Winter flowering heathers
- Violas
- Winter-flowering pansies
- Cyclamen
- Ornamental cabbages
- Skimmia japonica
- Cornus (dogwood)



What to do now

- Dead-head autumn-flowering plants and prune summer-flowering shrubs.
- Avoid walking on your lawn or you will damage it fairly easily.
- Add cloches to winter salads to protect from the weather and pests, and wrap pots of half-hardy plants in bubble wrap or fleece.
- Put feeders out. Birds will appreciate nuts, seeds and fat balls. Remember to freshen up water regularly and ensure it doesn't freeze.
- There's still time to get bulbs in the ground in November to guarantee winter colour from January onwards.
- Tidy and clean your garden tools.
- Winter prune apple trees.
- Divide snowdrops.

TIMELY TRIM

With its prolific sprays of fragrant flowers, wisteria is one of the highlights of late spring. Despite its delicate appearance it is an extremely vigorous plant. If you don't prune it back now, whilst it's dormant it will soon run amok. So sharpen your secateurs and set to work. Aim to create a simple, open framework that lets light through to the flowering spurs that will produce next spring's flowers.



NEED SHELTER OR SHADE?



VERANDAS, AWNINGS AND CARPORTS

Supplied and installed. Call for a free quote today!

SBI Ltd est. 1998 – Most installations completed in a day!

Awning servicing, repairs, cleaning and replacement parts.



CALL NOW 0800 0742 721 sbiproducts.co.uk



Georgian Brickwork

Specialists in
Conservation & Heritage Brickwork

Skilful repairs to listed & period properties
using

traditional methods and materials

Charles: 07732 975 349

www.georgianbrickwork.co.uk

WAREHAMS

Antique Garden Ornament – Gustavian Furniture

68 Oxford Street - Whitstable CT5 1DG

Mobile : 07831 210139

www.warehams.com

BJ CESSPOOL SERVICES LTD



Tel 07796 282864 or 01233 624017

www.bjcesspool.co.uk

If you want someone who is reliable, careful and efficient to empty your cesspool, septic tank or treatment plant please call Barry or Fiona Spicer.

- Emergency blockages
- Septic tank clearance
- Cesspool maintenance
- Treatment plant maintenance

We can help you with your home, rental properties, caravan parks, hotels and in fact any property that is not on main drains.

A jetting service can also be provided.



*Make your outdoors as
comfy as your indoors*

LUXURIOUS SHEPHERD HUTS & PODS • OUTDOOR STRUCTURES • FURNITURE • OUTDOOR GYM EQUIPMENT



At Outdoorsy Living we cater for the superior outdoor experience.

Contemporary yet traditional, our luxury shepherd huts and glamping pods are perfect for a wide range of purposes, with everything you need to make your everyday feel like a holiday.

Order yours now for year-round enjoyment
www.outdoorsy-living.co.uk

*Including:
Outdoor gym and play
equipment for the family*

Find Us On Social Media



Contact our customer services on:

01622 844 238 - info@outdoorsy-living.co.uk

TARMAC & RESIN BOUND GRAVEL SPECIALISTS

A background image showing a worker in a high-visibility vest operating a tarmac machine on a road. The machine is blue and white, and the worker is standing on it. The road is surrounded by trees and a wooden fence on the left.

KENT SURFACING CONTRACTORS

- DRIVEWAYS
- FOOTPATHS
- CAR PARKS
- FORECOURTS
- PRIVATE ROADS
- DROPPED KERBS
- GROUNDWORK
- PATIOS

Kent Surfacing Contractors LTD are a third generation surfacing company based in Challock, Ashford.

We have built a trusted name amongst domestic, commercial and industrial clients through our high standard of work.

We work with developers on a regular basis, forming anything from new roads and drainage for new development sites, to the driveways and patios.

We offer a free site survey and full written no obligation quotation.

- ✓ 10m Public Liability Insurance
- ✓ Free Survey & Quotation
- ✓ Trading Standards Approved

- DOMESTIC
- COMMERCIAL
- INDUSTRIAL

01233 349 012

www.kentsurfacingcontractors.co.uk

A GARDEN TRANSFORMED

Read how Sarah at The Garden Creative turned a grey, uninspiring garden into an idyllic low maintenance plant haven.

Words: Sarah at The Garden Creative

It's always a pleasure to create a beautiful garden for my clients or to revive an old, overgrown one. Usually we can uncover hidden gems in old shrubs, trees or roses that have been neglected over the years and with some renovation pruning and loving care they can again take their place as features in the new garden we construct around them. Sometimes, though, we have projects where there really is a blank canvas to start with. Although this can come with its challenges it's a treat I can't resist, especially if the clients are open to new ideas, be that in the planting, materials or overall style.

A great example of a project like this from 2021 is this one near the sea in Whitstable. Previous owners had reduced the garden to a huge patio with just a handful of plants and fake grass. Grey and uninspiring, this degradation of a once stocked garden was not only a tragedy for the inhabitants of the house it now belongs to, but also to the wildlife in the local area and causes big problems with surface water and neighbouring properties.

Low maintenance doesn't have to mean stripping



out every plant and covering it all with stone or concrete. The new owners also wanted the garden to be low-maintenance but they wanted to be able to look out on trees, plants, wildlife and a changing beauty that can only be provided by nature itself. A challenge I couldn't resist!

Lawns are not generally a great idea if low-maintenance is high on the wish-list, as during the warmer months they need mowing every

week or two, so alternatives should be considered. Being close to the sea, shingle can create a suitable beach-style ambience and fits into the surrounding landscape. This idea of context within the wider environment and the style of the house is very

important. If done correctly, the garden and house should look like they fit with each other and into the location they inhabit.

Having already purchased a hot tub, the clients wanted a relaxing garden, practical enough for returning from the beach with paddleboards and wetsuits. We kept some of the many patio pavers from the existing garden and cut them into long narrow planks to create pathways through the shingle, from the house to the hot tub.

To make the most of the large drop from the back of the house we built a wide decking in composite boards that will not rot or require staining or painting. Underneath we installed waterproof cupboards for storing paddle boards, seat cushions and garden tools, easily accessible from either side of the shallow steps that create a leisurely stroll from the sunny deck down into the garden.

The houses in this area are mostly very old shiplap cottages built in terraces so the back

gardens can be overlooked, making privacy hard to achieve. Tall trees, including *Magnolia grandiflora*, *Olea Europa* and *Chamaerops humilis* were planted, along with bamboo to screen off areas within the garden for sunbathing, socialising and relaxing. Planting has a year-round tropical feel with the huge, lush leaves of Cardoon contrasting with shiny needle-leaved Yuccas and Phormiums.

"The beauty of this project was the clients' trust in us at The Garden Creative to provide them with a garden of their dreams."

Seasonal interest and colour are added with trees like *Cotinus coggygia atropurpurea* that can be pruned hard in late winter to emphasise the leaf colour, and *Tamarisk ramosissima* with its wispy pink plumes through late summer into autumn. In summer the garden will be filled with

insects and butterflies while the many Buddleia, Bottlebrush and Lavenders are in bloom. Allium bulbs bring colour and height to the planting in the month of May, while in the shadier areas Hellebores and Epimediums provide early nectar as insects emerge in the spring.

Woven steel fencing was installed in three arcs to create a dramatic design feature through the garden while leading the eye around them on the winding path. These structures serve as screens to give privacy to the hot tub area and sunbathing circle, while bringing texture and structure in their natural-looking forms. The outside layer of steel corrodes over time to create colours of burnt orange and deep brown, a superb backdrop to the purple-flowering *Verbena bonariensis* and yellow *Baptisia tinctoria*.

The beauty of this project was the clients' trust in us at The Garden Creative to provide them with a garden of their dreams. A good budget meant that we could select quality materials with

longevity. The fences are made from cedar; the decking is composite: a mix of recycled wood, plastic and other building materials; and the screen is steel. Along with irrigation installed in the form of drip hoses to use in the summer months, the plants are being looked after, wildlife has been restored and this garden is all set to be here far into the future!

If you would like to discuss a garden design, please get in touch with sarah@thegardencreative.com or use the contact form on the website thegardencreative.com

For latest project images, see Instagram and Facebook @[thegardencreate](https://www.facebook.com/thegardencreate).

Landscapers

*Trevor Tooth and
Seth Furminger.*





Waste Management

Contact Our Team

01227 940750

07704453288

Rubbish Clearances • Bulky Waste Removal

Bins Emptied • Garden Clearances

Tradesman Waste • House Clearances

Electrical & Scrap Metal Recycling

Fully Licensed & Insured



Tel: 01227 731302 or 07961 985538

www.alanhopkinstreesurgeon.co.uk

Underdown Nursery, Mystole Lane,
Chartham CT4 7BX



ALL ASPECTS OF TREWORK

NPTC CERTIFIED

- Felling
- Thinning
- Pollarding
- Deadwood
- Site & garden clearance
- Stump grinding
- Wood chipping
- Call today for a competitive quote

KENT'S LEADING SPECIALISTS IN DRIVEWAYS AND PATIOS

Est. 1987

www.drivewayexperts.co.uk

Landscaping specialists

- Block paving ■ Driveways
- Decking ■ Fencing ■ Patios
- Turfing ■ Garden clearance
- Building & maintenance work



01227 749872 | 07770 964939

LEADING THE WAY IN LAWN CARE

PREPARE YOUR LAWN NOW

Autumn is a very important season for your grass. Lush green lawns in spring don't just appear overnight, the preparation starts now. Revolutionise your lawn with annual machine work paired with our unique **Spring Ready Treatment** applied from January - working wonders across the nation's lawns.

EVERY LAWN BENEFITS FROM MACHINE WORK

Lawns have a natural build-up of thatch. Thatch creates an environment irresistible to moss. **Aeration** and **Scarification** reduce thatch, thus reducing moss. **Simple!**

Book your machine work in today - your lawn will thank you for it!

Join our nation of Lawn Lovers today: Call: 01227 652351

Email: ashford@greenthumb.co.uk

Visit: greenthumb.co.uk





Heavenly Hellebores



How about a perennial that can start blooming before your earliest spring bulbs, continue flowering until your roses are almost ready and has great looking, deer resistant foliage for the rest of the year? Welcome to the world of hellebores!

The Hellebore, also known as the Christmas Rose or Lenten Rose, is a star performer in the winter garden, providing colour and interest at a time when festive cheer is welcome and the garden may be looking rather forlorn. These beautifully elegant flowers bloom from late winter to early spring, in a range of colours from rich, red wine burgundies to dusky pinks, through to luxurious creams, greens and whites. Part of their charm is in the delicate intricacy of their large, saucer-shaped flowers, which may be plain or adorned with soft speckles.

Suitable for beds, borders and containers, hellebores are woodland plants and thrive in moist, rich soil with good drainage. They enjoy dappled shade and prefer to be in a sheltered position, protected from strong, cold winds. They are a great problem-solver for tricky areas of the garden, such as shady

patches under deciduous trees and shrubs. Once planted hellebores dislike being moved, so give careful consideration when contemplating where to place them. To make the most of their charm, try planting hellebores where they can be viewed from the house, as you may not wish to venture outside to admire them if temperatures drop. Alternatively, plant them close to a door or pathway that will still be used in chilly, winter months.

Hellebores are perennial plants, meaning they flower year on year. Their leathery, sometimes marbled leaves are evergreen and



are an attractive feature in themselves. However by autumn, the older leaves may appear untidy and ragged. If this is the case, cut them off using secateurs – be sure to wear gloves as hellebore sap can irritate skin. This simple process immediately gives the plant a fresh, neatened appearance, and gives the hellebore flowers greater visibility. Exposing the plant to increased light and

air also reduces the risk of fungal diseases such as hellebore leaf spot. Hellebores benefit from an annual mulch with leafmould or compost in spring, to add richness to the soil and help retain moisture.

Hellebores are notorious cross-breeders and hybridise easily, meaning that new plants self-seed every year, boasting their own distinct patterns and colour combinations.

The beautiful detail of the hellebore blooms cannot always be fully appreciated when they are planted in the garden, as the flowers have a tendency to gracefully bow their heads downwards. To enjoy them in all their glory, cut some hellebore flowers on short stems and float them facing upright in a bowl of water as a table centrepiece. For a more traditional display, cut hellebores with longer stems, sear the ends of the stems in boiling water for twenty seconds, and then arrange them in a vase of cold water.

For classic, snowy white blooms, choose *Helleborus niger*, also known as the Winter Rose. This species flowers from winter through



to early spring. *Helleborus niger* ‘Little Star’ boasts pearly white blooms, and its smaller form makes it an ideal Christmas houseplant that can be planted outside once it has finished flowering. New to the market in 2021 is ‘Snowdrift’, whose white flowers open as simple, single blooms, but go on to develop a frilly, ruffled centre giving the effect of a double bloom.

For colours ranging from blush pinks through to opulent purples, choose *Helleborus x hybridus*, also known as the Lenten Rose. This species flowers slightly later, usually from mid-winter through to spring. For the darkest of dark purples, choose *Helleborus x hybridus* ‘Double Ellen Purple’, whose double blooms are often gently speckled on the outer petals. ‘Harvington Double Pink Speckled’ has delicate, pale pink double flowers with raspberry markings in the centre of each petal.

If your Christmas wish is for your garden to sparkle and shine this winter, why not take a trip to your local garden centre or nursery today and seek out this most magical of plants ?

Country Inspired Accessories



COUNTRY CLOBBER - at Standard Quay, Faversham ME13 7BS
Tel: 07850 292523 • Web: www.countryclobberltd.co.uk

Constructed and resurfaced
in Kent, Sussex and Surrey



Please call Martin
for free advice
and quotations

Tel: 01424 892265
07831 643835

www.martingurr.co.uk





InThe Country



**Come visit us in store for a warm, friendly welcome,
stocking all your needs for outdoor pursuits.**

Our store is open Wednesday until Sunday 10.00am - 4.00pm, visit us at

IN THE COUNTRY, ASHFORD ROAD, BADLESMERE, KENT ME13 0NX

01233 742700 inthecountrykent.co.uk



Winter warmers for outdoor spaces



Photo: neptune.com

The garden can be a great alternative space to 'chill out' with family and friends even during the colder months. So enjoy your garden this winter with these warming tips...



Photo: uniquehomestays.com

Take shelter

Adding shelter will not only increase intimacy but will, of course, shield you from the elements. A gazebo is a great all-round refuge.

Add some ambiance

If you're going to sit out in your garden over the winter then you're going to need some decent lighting. Somehow candlelight instantly warms a space, if not literally then certainly psychologically. Twinkling fairy lights will also enhance the cosy atmosphere by creating strong contrasting shadows and will frame your designated space beautifully. Solar-powered lights are a great idea as they do not need a power source and most come on automatically when it begins to get dark. They come in all shapes and sizes from wall-mounted lights to strings of pretty fairy lights.



Vintage style lights, £45, Cox & Cox

Feed a cold

The best part of alfresco entertaining is of course food and what better way to warm the cockles of the heart than by hosting an Alpine-style gathering? Make hot drinks and cook warming stews indoors and serve in mugs outside. Or even better, spark up the BBQ as an extra source of heat.



Wrap it up

Keeping your guests warm is essential if you want to throw a comfortable, winter garden party. One of the cheapest and easiest ways to stay cosy in the garden is to wrap up in blankets or throws. Lie them over your lap, wrap them around your shoulders or cuddle underneath one with your loved ones, and as the night gets colder, keep close toasty hot water bottles to keep extra warm.

When not in use, look out for large rain (and snow) proof storage boxes that you can stash cushions and throws in. If you get one sturdy enough, they can make excellent alternative seating option in smaller outdoor spaces too.

Photo: uniquehomestays.com

Make sure your outdoor furniture is dry and then soften it up with plenty of faux fur throws and wool cushions.



Cosy seating

In the summer you might want to lie out in the sunshine on a sun lounger or perch on a cool and airy wooden chair in the heat but in the winter a different type of outdoor seating is called for. Get next-level cosy on a padded outdoor sofa with thick, washable cushions add extra comfort and warmth for those chilly winter evenings.

Or what about the outdoor Phoenix chair which heats up at the touch of a button leaving you warm and cocooned, ready to enjoy the colder days or stay outside longer while the sun goes down. The chairs are beautiful, smooth and heat up like a rock warmed up naturally from the sun. Made from cast stone, they are ergonomically shaped, tactile to the touch and very comfortable to sit in.

Available from www.capital-garden.com



Photo: neptune.com



Fire bowls

Fire bowls are a popular alternative to chimeneas, providing warmth and ambience for when you want to sit around a nice glowing fire on a chilly evening with friends and family.

The Original Kadai Fire bowls®, made from recycled oil drums which have been riveted together for strength and durability, originate from a traditional India design, the word Kadai is an Indian word for a Balti shaped cooking pot. Kadai firebowls are great for BBQs and open outdoor fires. They add a warm feel to any BBQ or cool evening, for sitting round the fire. (Available locally from Preston Garden Centre, www.prestongardencentre.co.uk)



Don't forget to style your outdoor table top just as you would inside with candles, a table cloth, napkins and lots of platters so that your outdoor meal will look extra special.

Photo: layeredlounge.com

Hot tubs

Surely one of the best times to own a hot tub is in the winter, giving you a chance to escape from the cold weather by sinking into hot, soothing water. This is a great time to get the family or friends into your spa, especially when it's beautiful and snowy. This can make for a unique and memorable place for a winter gathering and socialising.



Photo: uniquehomestays.com

Kent's
only Kadai
fire bowl stockists



Preston Garden Centre

Santa's back, bigger and better!

- Christmas trees now in stock
- Great winter seasonal colour
- Hedging and screening
- Large selection of pots
- Cards and gifts
- Wheelchair friendly
- Christmas trees
- Gifts & decorations
- All winter gardening
- New selection of trees available in January

Closed 25th - 28th December

Open 29th December to 2nd January - 10am to 4pm

Closed from 3rd to 9th January

OPENING HOURS FROM 9TH JANUARY

Sunday to Thursday 10am to 4pm Friday & Saturday 9am to 5pm

COPPERS BISTRO - SEE PAGE 115



The Street, Preston Nr Wingham, Canterbury CT3 1ED



Tel: 01227 722250





- Softwoods
- Hardwoods
- Sheet materials
- Decking
- Machined to your design



Contact us on: 01227 738838
Email: sales@eastkenttimber.co.uk
www.eastkenttimber.co.uk

THE GARDEN CREATIVE

SARAH MORGAN

07725055701

sarah@thegardencreative.com

www.thegardencreative.com

Design

Landscaping

Planting

After-care



[@thegardencreate](https://www.instagram.com/thegardencreate)

Award-winning Garden Designer



Save on your home insurance



Insurance for all types of homes including:

- High Value Homes
- Property Undergoing Renovations
- Non-Standard Construction
- Listed Buildings

gsi-insurance.com

GSI Insurance Services (Southern) Ltd
118 John Wilson Business Park
Whitstable
Kent
CT5 3QY

Tel: 01227 772 775

Your local broker has it covered

A very British craft

We're experiencing a huge craft revival. It reflects a renewed love of the handmade, but it's also about rediscovering designs that are simple, useful and long-lasting.

Craft has been a part of British life since prehistoric times, when pottery was mostly homemade, and hand-woven woollen textiles shielded us from the elements.

Many types of craft have been made in Britain over the centuries, but the ones that have stood the test of time are the simplest and most functional. Often, they've been made from home-grown materials, so learning about them can help us to understand our landscape and history. Take basket weaving, which may be the world's oldest craft. Our native plants – such as hazel, willow and rushes – were once widely used for weaving baskets. These were the most common form of packaging in olden times – the historical equivalent of plastic cartons and cardboard boxes.

Up until a century ago, most villages would've had their own weaver. There were endless different types of basket for everything from transporting bread and linen to catching fish, trapping birds and carrying bricks and coal; the craft helped, quite literally, to build Britain. The earliest potters used basket 'moulds' to shape their vessels, long before the potter's wheel was

invented. Not many ancient baskets survive because they were used until they fell apart, but today's versions are made just like they were long ago; of all crafts, this is the one that's changed the least.

Woodworking is another British craft that has stood the test of time. Native hardwoods like oak, elm and beech lent themselves to





being carved into furniture, bowls and spoons, and, as with basket weavers, villages would once have had their own wood-turner. By the 18th century, handmade timber furniture was one of Britain's biggest exports. This tradition had a huge influence on the Arts and Crafts Movement and continues to shape our tastes today; modern makers are reviving interest in wood as a sustainable, long-lasting material. Many of our rising furniture designers train at Buckinghamshire New University in High Wycombe, a centre of chair-making for centuries thanks to its beech woodlands (the area is the birthplace of the rustic Windsor chair, and lends it name to Neptune's Wycombe collection, which began with a dining chair).

While craft is essentially about the handmade and the small scale, there are times when it has crossed over with bigger industry. With

pottery, for example, factories like Wedgwood showed how traditional craftsmanship could be combined with thoughtful, ethical mass production. Ironmongery was also initially a homespun affair, with local blacksmiths making basics like tools, cooking pots and nails, but it was transformed by the modern postal service, which brought a huge demand for letterboxes, door numbers and knockers. The change drove craftsmen to be more creative with their ideas, proving that industrial methods can help old skills to thrive.

Perhaps one of the most interesting materials crafted in the UK is wool. Woollen cloth powered Britain's medieval economy and was often referred to at the time as 'white gold'. Everyone from peasants to wealthy landowners kept sheep, whether for cottage weaving or large-scale trade. It's sometimes said that





from wool. And today, a revival of interest in natural materials has brought wool back into the spotlight: Harris Tweed, woven in the Outer Hebrides, is once again in fashion, as are hand-knitted woollen blankets.

Today, globalisation has brought artisan skills from around the world to Britain, ensuring that the craft movement is richer than ever. But traditions like the ones described here help to connect us with our past too. They're even present in the surnames – Weaver, Potter, Turner – that we've inherited from our crafting ancestors.

Article and photos courtesy of Neptune (neptune.com)



the roots of Britain's class system lie in this industry, as it was much easier for landowners with big flocks to sell high quantities of wool abroad. Although wool crafts declined after we began to import cotton in the 19th century, there are still reminders of how powerful they once were. In the House of Lords, the Speaker sits on the Woolsack, a 14th-century symbol of wool's importance to the nation's prosperity. One of England's most well-preserved medieval towns, Lavenham in Suffolk, owes its beautiful half-timbered buildings to fortunes made

Some furniture is made for
the here and now. Some is built
to stand the test of time.
At Neptune, we believe that
the best can do both.

Good design never
grows old.



NEPTUNE

Neptune Canterbury, 01227 209 300
Neptune Tonbridge, 01732 351 866
neptune.com/victoriasdiningroom



THE BARN

The Antiques Barn

BETHERSDEN

Over 3,000 sq ft of the stuff you didn't know you wanted!!!
As well as the stuff you do!
Open 7 days a week 10.00 - 4.30.











Behind Ripleys Garden Centre, Ashford Road, Bethersden, Ashford, TN26 3LF

Telephone: 07708759581

WE PROVIDE A FULL OR PARTIAL HOUSE CLEARANCE SERVICE





OLD ENGLISH PINE

CLOSING IN JANUARY

Your last chance to visit
one of the best loved shops
for miles around.

100/102 Sandgate High St,
Sandgate, Folkestone CT20 3BY

Tel: 01303 248560
www.oldenglishpinc Kent.co.uk

Rye Showroom
55 Cinque Ports Street
Rye, TN31 7AN

HMR
HAND MADE RUGS

Landgate Showroom
By Appointment
3 Landgate, Rye, TN31 7LH

With an ever-growing demand for custom-made, designed rugs and our collaborations with designers across the globe, we can create rugs in any design imaginable, alongside thousands of existing rugs to choose from.



Call. 01797 360353 | rye@handmaderugs.co.uk | www.handmaderugs.co.uk

Whitstable Stove Shop

LOG BURNING * MULTI-FUEL * CAMP COOKING



2 Saddleton Road, CT5 4JB Tel: 01227 266209
whitstablestoveshop.co.uk



Cleal's UPHOLSTERY

Over 55 years experience

Repair and re-cover dining chairs. Re-upholstery and recovering in a wide range of fabrics.

Renew old cushions; replace rubber webbing; renew old springs. Cane seating; caravan & boat cushions.

- Domestic
- Modern
- Contract
- Antique

Family
run
business



21 Oakwood Drive
Whitstable CT5 1NY
T: 01227 273611
e: juliecleal@hotmail.co.uk

SOUTHGATE ELECTRICAL CO. LTD

The Best Electrical Services

Offering a full range of electrical services
from design to installation

- External Electrics
- New Builds
- Access and Security
- Space Heating
- Electric Showers
- Fire Alarms
- Landlord Certificates



T: 01227 712790 / 07889 895394
www.electricians-canterbury.com



Wells & White Bespoke Upholstery



Traditional and modern upholstery
services available, or learn the skills
yourself in one of our classes.

07999 604250

www.wellsandwhite.co.uk

wellsandwhite@outlook.com

The Cow Shed,
Unit 8,
New Street Farm,
Great Chart,
Ashford,
Kent TN23 3DL



Established 1988



DOMESTIC CLEANING SERVICES LTD

Regular or One-off Cleaning

Homes and Holiday Lets

End of Tenancy

Moving Cleans

Spring Cleans

Professional, Friendly, Reliable Service

CALL US NOW FOR A FREE QUOTATION

Tel: 01227 277033 | www.supermaids.co.uk | info@supermaids.co.uk



Scandinavian touch

Whether you are looking for a special gift, something unique for your home or advice on a design project, we are here to work with you to bring your home that Scandinavian Touch.



Opening times during winter months:

Monday - Friday	11am to 4pm
Saturday	10am to 5pm
Sunday	11am to 4pm

66 Oxford Street, Whitstable. CT5 1DG

www.scandinaviantouch.co.uk | shop@scandinaviantouch.co.uk



64-65 High Street, Wingham, Canterbury, CT3 3BJ

Tel: 01227 721 938 or 07808 667369

www.redflooring.co.uk



Family-run
business offering
first class service

- Luxury vinyl tiles
- Laminate flooring
- High quality carpets
- Real & engineered wood
- Cushion vinyl
- High quality installation



**We have a lovely new range of
fabrics/materials now available**



CGS BLINDS & SHUTTERS LTD

Come and visit our showroom

• Huge choice • FREE quotations

Tel: 01227 278643

146 Tankerton Road, Whitstable CT5 2AW

www.cgsblinds.co.uk



Find us on Facebook

Dressing up

Windows are an essential part of the home for admitting natural light and providing ventilation as well as a view to the outside world, but there's no reason that your windows should be drab and boring. There's a huge range of window dressings available to ensure that your windows are not only functional but beautiful.

From traditional curtains and shutters, to beautiful stylish blinds, there is something to complement every kind of living space.

Blinds

More adaptable than curtains and more versatile than voiles, the newest blinds come in a whole host of modern materials and super-chic colours, that not only make a feature of your windows, but provide flexible sun protection too. The latest fabrics also offer solar protection, so no more faded fabrics or floors. They also block out heat, so rooms stay comfortably cool. With moisture-resistant, anti-fungal and dust-repellent options too, it's easy to keep window treatments in top condition.

If you need to reduce glare, choose one of the many sheer fabrics that provide an effective and modern alternative to nets. A mid-tone grey will take out glare but still provide good visibility. White reacts with the light and is harder to see through, whereas black gives the best visibility but will become totally transparent at night – fine if you're not overlooked, but otherwise you'll need a secondary window treatment to provide privacy. These mesh blinds gently filter out the sun's rays without completely blocking

out light, making them ideal if you work from home – no more struggling to see your computer screen if you're sat near a window.

Make sure that you consider more than just the look of the blinds when purchasing though: you may need blackout blinds in one room but not another and, if you have large windows, you may need either custom-made blinds, or two or three smaller blinds that can be opened independently.

Ensure that you have measured your windows carefully before going shopping and remember that all ready-made blinds will have metric





Roman blind, made in Mika stonewash cotton in Rose, £52 per m, Susie Watson Designs

measurements on the packet, but not all will tell you the imperial equivalent. If in doubt ask the assistant, or go to an established company who will install as well as supply your new blinds.

ROLLER BLINDS

Roller blinds provide excellent protection against heat and light and give the room a neat, uncluttered look. Choose sheer to soften sunlight, patterned fabrics to introduce colour and texture or blackout blinds to block light completely.

VERTICAL BLINDS

Vertical blinds have shaken off their dowdy office image with companies now offering sheers, patterns, even metallics to their ranges. Ideal for high windows and doors, tilt them to let in a lot or a little light, or pull back entirely.

VENETIAN BLINDS

For an easy way to control light levels in a room, Venetian blinds are the perfect option. More affordable than sought-after shutters, they have sleek fuss-free design and are available in a range of finishes to match your decor. Often period homes have irregular sized windows, so in this case, opting for bespoke blinds is a great option.

ROMAN BLINDS

Still a firm favourite in homes, Roman blinds provide a softer look than wood or metal Venetian blinds and look better when combined with dress curtains, a trend which is growing. When pulled up, they make a



Venetian blind from a selection at CGS Blinds, cgsblinds.co.uk



Roman blind from a selection at CGS Blinds, cgsblinds.co.uk

neat stack at the top of the frame that is still visible, so they remain a feature in any decorative scheme.

Designing a country kitchen? Opt for a lightweight, pretty floral blind to create a welcoming environment. Roman blinds are perfect if you like the softness of a fabric window treatment but don't have space for curtains in your kitchen.

Shutters

Shutters are an authentic option for period homes from many different eras, and offered a practical solution before glazed windows were even in use. If you have original shutters they will need to be preserved and maintained, although fitting new shutters will add a beautiful feature. Sales of shutters have grown massively in the last few years. Taking their name from the sprawling 19th-century mansions in America's deep south, the most versatile are plantation-style shutters. These feature louvres that open and close to minimise heat and provide ventilation and privacy when needed.

Café-style shutters are hung only on the bottom half of the window and are more cost-effective. Ideal if you live at street level and need privacy, but still want to allow light in. Tier-on-tier shutters are more versatile, with two sets hung

one above the other, working independently giving greater flexibility.

Full-height shutters are the best option for taller windows. There is usually a dividing rail halfway up which makes them sturdier and enables the louvres in the top and bottom half to move independently.

Quality window shutters are very durable and long lasting. Once you have them, you don't need to replace or repair them due to wear and tear, unlike other window treatments. They come with long warranties and do not require the same amount of cleaning that other blinds and curtains require. As they are typically left inside



Shutters from a selection at pro-fitblinds.co.uk

the house when sold, they can also increase the selling value of a property.

Tier-on-tier shutters have two sets of panels sitting top and bottom, giving you the flexibility to operate them separately, and greater control over the levels of light and privacy. Furnishing a period room? Pick smaller slats for a more traditional appeal; wider slats for a more contemporary one.

Shutters are big news in the interior design world, thanks to a European influence and trends such as the 'Scandi' look, which have been flooding the nation for the past few seasons. Not only do shutters look great, they are also a durable, high-quality window treatment which, whilst a little pricier in the first instance, represent an excellent long-term investment. They're considerably easier to keep clean than fabric window dressings and they're very adaptable, coming in a variety of materials, colours and designs.

With styles including café, plantation and solid, you can get shutters to suit any house or room, but it's a good idea to avoid readymade varieties and instead have them professionally made and fitted, as they're less forgiving than curtains when it comes to unusual sizes or shapes.

Of course that shouldn't stop you from getting them. A reputable fitter will be able to create a



*Shutters from a selection at CGS Blinds
cgsblinds.co.uk*

custom product that will suit any size or shape of window and will make a beautiful and practical addition to your décor.

Curtains

Whilst blinds may be a popular modern option, a more traditional approach with curtains is increasingly coming back into fashion, with a new range of rods and hanging systems giving you the chance to make an old idea transferable to a modern setting.

Curtains can be extremely useful when it comes to conserving energy and lowering heating costs and add a strong statement of colour to a more minimally decorated room. Opting for loose draping materials with plenty

of embellishments is a great option if you are looking to create a luxurious style in your home.

We know pelmets may be associated with the chintzier end of traditional country house design, but when they are done right they can lend style and elegance to a window.

From cracks under doors to poorly glazed windows, period homes are no stranger to draughts. Changing the doors and windows may not be an option, but a heavy-lined curtain can offer a quick and affordable draughtproofing solution while also adding a welcoming wash of colour to rooms, plus if you pick a patterned print it's a really quick and easy way to add some interest to a space.

Velvet's a huge trend for sofa upholstery and is

just as appealing used for curtains. While roller blinds and shutters both work well in traditional space, nothing beats the luxurious look of velvet curtains with deep swags, lush fabrics and ornate pelmets.

People regard soft furnishings as integral to the overall look of the room and are prepared to pay for high quality. There has recently been a return to traditional decorative dressings with lots of trimmings, pelmets, swags and tails. It seems we are no longer afraid to be bold with interior design in the 21st century and the window has become a fantastic place to add a block of vibrant pattern or colour to a room and complement more neutral furniture and decoration.



Sanderson curtains and blinds made to order from The Chalk House, thechalkhouse.co.uk

Professionally fitted shutters, blinds & curtains



Bespoke Curtains
Quality Blinds
Stylish Shutters
Awnings and Canopies
BY APPOINTMENT ONLY

Pro-Fit Blinds

Tel: 07709 178459

Email: tony@pro-fitblinds.co.uk

Web: www.pro-fitblinds.co.uk

Unit 72

Joseph Wilson Industrial Estate

Millstrood Road

Whitstable

Kent CT5 3PS

The Antique Oak Flooring Company

SPECIALISTS IN ANTIQUE AND RECLAIMED FLOORING



VIEWING BY APPOINTMENT

Willow Court Farm, Bilsington Road, Ruckinge, Ashford, Kent TN26 2PB

T: 01233 659508 M: 07733 263540 www.antiqueoakflooring.com

ST JOHN, RYE

Marta Nowicka & Co has transformed a former St John Ambulance Station in East Sussex to create a family retreat featuring exposed brick walls and industrial-style finishes.

Located in a private residential courtyard, this twin-pitched building has undergone many changes over the last century. Having started life as a groundskeeper's house for the Grade II listed Whitefriars property, it was knocked down and rebuilt in the 1950s

to create a large garage/ workshop for St John Ambulance whose HQ was then located at Whitefriars. They then downsized in the 70s, converting one side of the garage and its uppers into their offices.



Located in the medieval town of Rye in East Sussex is St John Rye, a detached house converted from a former St John ambulance station. The building sits back from the steep cobbles of Conduit Hill, sharing a courtyard with an elegant, listed Georgian building. Its unfamiliar appearance caught the eye of owner Marta Nowicka, an architect who had been visiting the town for 20 years. “I fell in love with the atmosphere, its medieval streets, stone and timber warehouses,” she recalls. She had been living nearby in a cottage on Camber Sands beach, waiting for something “wildly interesting and challenging” to come up in Rye.

“As it was a former ambulance station, the ground floor was very spacious and the roof spaces had quirky attic-like rooms,”



explains Nowicka. “It had this perfect spatial juxtaposition, plus it required a total refurbishment as it had not been touched since the 1970s.”

Nowicka purchased the property in 2013, but the project was beset by hurdles from the beginning: She was faced with the stringent planning laws of a conservation area,



neighbours objected to her plans, and town planners refused permission to enlarge the footprint of the original building. The project took six years in total and won an Architects' Journal Retrofit Award in 2018.

A side extension that was added to the building in the 1970s was rebuilt to form an entrance hall and study on the ground floor and a bedroom and family bathroom on the first floor. The pitched roof visually extends the pitch of the existing building. Local, handmade clay peg tiles, added to clad the walls of the extension, reference the style of surrounding

buildings and complement the existing red brick structure.

Original materials were repurposed throughout wherever possible. "The old existing roof was made watertight, saving all the original tiles, including the moss that was growing on it," explains Nowicka. From nearby Conduit Hill, the juxtaposition of weathered red brick and clay with flush, aluminium windows gives the onlooker a sense that something interesting is happening inside.

The garage doors were remade to meet building regulations, but Nowicka kept the



originals, stripping them back and using them as wall cladding.

Inside, a double-sided wood-burning stove stands on a large concrete plinth in the middle of the space, creating a central heat source and focal point. Medieval dwellings were often arranged around a central hearth, and Nowicka sees this as a nod to the far-reaching history of the area.

Nowicka set about reorganising the floor plan. By removing an unoriginal central wall, she transformed the ground floor into a 780 sq ft space that is divided into two zones: kitchen and dining on one side of the wood stove, seating on the other. The flooring throughout is wide riven oak floorboards. Textured materials bring

warmth to an otherwise minimalistic interior. Oak is used to clad the walls of the double-height stairwell. Robust materials have been used throughout, making the space suitable for large gatherings.

"Any interesting brickwork has also been exposed as a feature," explains Nowicka. The walls of the hallway mirror the view from the narrow window in the stairwell, connecting the interior to the town outside.

In the kitchen, cabinets were made from

"Generous circulation spaces upstairs and down give the building a convivial feel. The space was conceived as a place to come together with friends and family."



sand-blasted greyed timber. The worktops and backsplash are Carrara marble, whilst the brushed stainless-steel kitchen island is intended to reference the medical industry.

Generous circulation spaces upstairs and down give the building a convivial feel. The space was conceived as a place to come together with friends and family and is now available to rent.

For more information visit
www.domstayandlive.com



BAGHAM BARN ANTIQUES & INTERIORS

Canterbury Road (A28) Chilham Kent CT48DU



Tel: 01227 732522 | www.baghambarnantiques.com



Opening times Thu, Fri, Sat 10am-5pm, Sun 10am-4pm

LARGE CAR PARK



HUNKERDOWN TEAROOM

serving freshly-made
snacks, cakes and
refreshments

Brighten everything up, add a new colour here and there, or some shine with copper or brass. We have mirrors and pictures, a library, eclectic collectables, jewellery, militaria, china, furniture and a lot more besides. New traders have recently joined us and Bagham Barn is full of joy and temptation.



Fascinating façades

In recent times our town and city centres have been suffering an almost unprecedented decline as retail, tourism and the night-time economy falls foul of the effects of the pandemic and the accelerated move by consumers to buying online. During these challenging times it's good to have a story to tell of optimism, vision and success...

For the last decade or so, the streetscape in one of Canterbury's scenic and popular city centre locations has suffered a steady downward trend.

From a thriving area with a healthy mix of all types of businesses enjoyed by tourists and residents alike, it had spiralled down into what could almost be described as shabbiness. The deterioration didn't happen overnight. St Margaret's Street was home to several bars, restaurants, shops and the site of the Slatters Hotel, which closed down several years before

this tale begins. A long-awaited refurbishment for the hotel never seemed to materialise, and the restaurant chain Ha! Ha! that occupied the site adjacent to the hotel ceased trading.

Two grade II listed buildings were contained within this site: Number 7 St Margaret's St. previously occupied by Ha! Ha! and Number 8, a brick Georgian building that had its upper storeys extensively damaged during WW2, and which was rebuilt in the same style but probably still contained medieval timber framed parts behind its façade.



Things appeared to be looking up with hopes of rejuvenation when the Slug and Lettuce chain of restaurants was set to move into No. 7; however after major structural defects were discovered during the refit, the works were put on hold. Significant concerns were that due to joists snapping, the first floor façade was unsupported and in danger of collapse. To make the building safe, a temporary steel frame

was put up. Further investigations revealed the building to be riddled with structural problems and decay.

It was obvious that substantial repairs would need to be made to return the building to use, so in early 2008 Canterbury City Council commissioned an Historic Building Assessment by CAT (the Canterbury Archaeological Trust) of the building to identify problems and



with no apparent redemption, until nine years ago when two local developers, Zaw Htut and Mike Wood became aware of the hotel site. After preliminary investigations they had discussions with Canterbury City Council, who were obviously keen to reinstate a much-needed hotel and other

provide informed decisions on the repair and refurbishment. The assessment revealed that the property was probably built towards the end of the 17th century of part brick and timber construction and made good use of salvaged materials from earlier buildings.

Much to the chagrin of local residents and business owners, in what was previously a thriving and attractive part of Canterbury the temporary steel frame became an unwanted feature in the streetscape as months turned into years. It was not only unsightly but considerably narrowed the width of the street, jutting out into the pavement. The degeneration of the buildings continued as time moved on. Apparently, there were complex legal issues regarding ownership that stalled efforts to rebuild, combined with listed building status, not to mention the prospect of a site rich in archaeological interest to be protected and preserved as the site housed the remains of an historic Roman Theatre first uncovered in an excavation in the 1950s.

St Margaret's Street was in a state of limbo,

facilities to the street.

It was a steep learning curve to begin to understand the complexity of the issues anyone developing the site would face, definitely not an undertaking for the faint-hearted. Mike and Zaw had to find their way through myriad issues; for example, following due process to unravel leases and ownership, the eye-watering costs of complicated repairs to listed buildings in Canterbury's Conservation Area and an Area of Architectural Importance, challenges on planning from strategic views. The overall finished height of the redevelopment was crucial and must not dominate Canterbury's skyline or exceed the 22m height of the nearby Whitefriars complex.

Questions were asked and solutions were sought, local architects Guy Hollaway were brought on board, and another Historic Building Assessment was commissioned by Zaw Htut in May 2015 to inform the development team on the way forward that would allow a sensitive and careful refurbishment of the site. Once they were armed with all the facts,



plans were drawn up and a mitigation scheme agreed. Special piles were designed to reduce ground disturbance to ensure precious archaeological remains were kept safe, along with encapsulation of parts of the original timber-framed buildings, leaving them safe for future archaeological exploration.

Now this all may sound clear-cut, cold and scientific, but what it doesn't tell you is the commitment from Zaw Htut and Mike Wood, who took on a project of epic proportions and, despite immense challenges, they had the vision to press on through the difficulties to create a superb finished product that is more than the sum of its parts.

The site is now home to a Hampton by Hilton hotel; however this isn't just any hotel, as the development team has gone to extraordinary lengths to incorporate stunning original features and retain the unique history of the building. The late 17th century façade

of No. 7 and the brick Georgian frontage of No. 8 have both been beautifully repaired. The entrance to the reception and lobby of the hotel through No. 7 is beautifully light, airy and welcoming. Almost immediately there is a reminder of the all-important history of the site: a glass panel in the floor allows a view of the remains of the Roman Theatre beneath the floor.

Past the reception and bar on the right, a bright, airy and spacious seating area is flooded with natural light from a double-height glass ceiling, an inspired move from the architects which gives it a courtyard feel and offers a lovely space to relax.

There are 129 bedrooms in the hotel which is a great boost for tourism in Canterbury, in this fantastically situated city centre location, a resource the city has sorely needed for many years. Along with the usual generic rooms one expects to find which are undoubtedly lush,



modern and beautifully comfortable, there are 11 rooms in the original listed areas. These are anything but generic; they are quirkily shaped, with exposed chamfered beams that give more than a nod to the history of the building and they are beautifully appointed within the house style of décor; what's more, they boast superb scenes of Canterbury from their windows: a perfect example of embracing the past to great effect.

The hotel opened in June 2021 and is enjoying excellent occupancy levels despite the recent pandemic. Stage 2 for the opening of a rooftop restaurant is well under way: this will be accessed through the entrance of No. 8, the Georgian building. Diners will be taken up by lift to the new rooftop dining area, with stunning views of Canterbury's cathedral and surrounding rooftops. It's planned to open for Easter 2022 and certainly is another inspired idea and will be great for Canterbury.

Local business owner, Brendan Shilling of Alberry's Wine Bar that's opposite the hotel, said, "I couldn't be happier. The Slatters Development has given my business and the whole area an uplift, they've removed a depressing eyesore and replaced it with a stylish hotel, retail units and returned St Margaret's Street to an upmarket and classy location."

When viewed from the street the facades tell a story of a journey through time: the late 17th century of No. 7, the Georgian period represented by No. 8 and then the super-smart and ultra-modern frontage next door that replaces the shabby old Slatters hotel bringing us spectacularly up-to-date into the 21st century.

With thanks to Slatters Development Ltd. and Oliver Chapman, Historic Buildings Advisor. For more information: www.hamptonbyhilton/canterbury



Boho Spice candle holder, £14
talkingtables.co.uk



Kitchen Aid mixer, £529
kitchenaid.co.uk



Hungarica tablecloth
£64, juliabrendel.com



Lantern, £55,
thechalkhouse.co.uk



Candle, £8
loaf.com



Ice bucket, £19
tkmaxx.com



Octopus soup bowl, £21
Copperfields of Whitstable



Wine goblet, £48
dartington.co.uk

Bright Skies

COLOUR OF THE YEAR 2022



Palm vase, £30
johnlewis.com

Pom pom velvet cushion, £35
raggedrose.com



Dulux Bright Skies



Khotan Design Rug,
£1455,
Hand Made Rugs
handmaderugs.co.uk



Table lamp, £215,
originalbtc.com



Turtle jar, £32,
Copperfields of Whitstable



Pooky table lamp base,
£128, shade, £99
Oohhowlovely.co.uk



Lasagne dish £39.95
artisanhomeware.co.uk

Coleridge candles, £18
neptune.com



Cabinet, £595,
oliverbonas.com



Harper cuddler chair, £839
lenleys.co.uk



Bespoke cushion, £75
karenperryinteriors.co.uk



French antique painted indoor
jardinières £595 (pair)
baghambarnantiques.com



Velvet quilt, £110
raggedrose.com

Footstool, £249.99
oakfurnitureland.co.uk



Snack bowls, £20
joebrowns.co.uk



Camber Sands framed oil on canvas,
£4,100, fairfaxgallery.com



Bead basket, £189
nest.co.uk



Thursfield vase, from
£28, neptune.com



Bespoke chair, £695
Oohhowlovely.co.uk



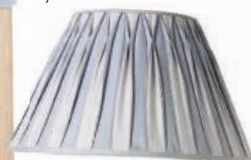
Jug, £7.99
homesense.com



Eden dining chair, £395
londonroadfurniture.co.uk



Victorian Tale cushion £75,
juliabrendel.com



Silk lampshade, £449,
besselink.com

Ed Parry

Plumbing & Heating

Installation, Servicing & Repair

- *Boilers*
- *Cookers*
- *Central Heating*
- *Bathrooms*
- *Power Flushing*
- *Showers*



Landlord gas safety certificates

01227 266236 • 07976 925224
ed.parry@me.com
www.edparryplumbingandheating.co.uk



PJ ARCHITECTURE

Harbour Offices, Whitstable CT5 1AB

01227 770470

enq@peterjacksonarchitects.co.uk



Gary Miller

PAINTER & DECORATOR



30 years experience specialising in period & country properties across Kent. References available.

24 High Dewar Road, Rainham ME8 8DN

Tel: 01634 235773 or 07971 871433 garymillerdecorator@gmail.com

DESIGNER BED CO.

CANTERBURY

FAMILY OWNED BED & MATTRESS COMPANY SINCE 1977

MAKE YOUR BEDROOM THE MOST BEAUTIFUL ROOM IN THE HOUSE

CHOOSE FROM: SOLID OAK • MAHOGANY • PAINTED • CHROME • DIVANS
RECLAIMED WOOD • SCANDINAVIAN PINE • LIT BATEAU • OTTOMANS
CAST IRON VICTORIAN • UPHOLSTERED • ELECTRONICALLY ADJUSTABLE



100S OF DESIGNS PLUS BESPOKE SERVICE AVAILABLE

HUGE CHOICE OF FINISHES & COLOURS

WE DELIVER, WE CAN ASSEMBLE YOUR NEW BED & TAKE AWAY YOUR OLD ONE

FANTASTIC CHOICE OF MATTRESSES AVAILABLE TO TRY BEFORE YOU BUY
IN OUR WELCOMING SHOWROOM

BIGGEST EVER JANUARY SALE
STARTS 27TH DECEMBER
FINISHES 16TH JANUARY

27 Maynard Road Wincheap Estate Canterbury Kent CT1 3RH
T: 01227 479446 E: designerbedsenquiries@live.co.uk www.designerbedsltd.co.uk

EMPLOYED SKILLED WORKFORCE | RENOVATIONS & EXTENSIONS
CONVERSIONS & ALTERATIONS | DESIGN & BUILD



A.T. PALMER LTD

RESTORATION SPECIALISTS EST.1949

T: 01233 770077

Smarden Business Estate, TN27 8QL

atpalmer.co.uk



ADDERLEY MASONRY



7 Abbey Place,
Faversham ME13 7BG

Tel: 07791 233 922

info@adderleymasonry.com
www.adderleymasonry.com

Getting the right masonry team to undertake your project is key to upholding its integrity and history. That's why we aim to provide a high quality and efficient workmanship that both compliments and protects the fabric of the building.

KENT Manor House

Leading south east architectural practice and listed building specialists, Clague Architects, were commissioned to remodel, restore and extend this splendid Grade II Listed manor house in the stunning Kent countryside.



The house grew in size over many centuries, with major elements of construction dating from the 17th, 18th and 19th centuries as various families' fortunes came and went. The principal elevation of the house embraces you with a Georgian frontage, epitomising country living.

George Esdaile, of Clague Architects, worked closely with the local planning department, conservation officer and the property's owners to carry out a sympathetic and careful restoration, whilst bringing the house up to date to make it a welcoming and comfortable home.

The main front entrance of the house leads



into a spacious hallway; its major feature is an elegant staircase that leads up to an intermediate central landing with twin flights of stairs branching off in opposite directions to the upper storeys.

The wall at the back of the staircase has been opened up along nearly its full length, creating a gallery effect to the upper landing on the other side of the wall, giving a view through and allowing light to flood the area, creating a feeling of space and grandeur. Matching spindles on the bannisters and the gallery balustrade establish continuity, as does the custom hand-printed wallpaper chosen by the client, who has led the interior design on the refurbishment with bold and inspired ideas to suit their taste and lifestyle.

Leading off from the reception area is a stylish and characterful study. The owners have bravely chosen to decorate the handcrafted walls with a dark peacock blue-green gloss







finish that contrasts elegantly with the restored original coving and pale woodwork. The bold choice of gloss finish has paid off, as light from the large double-aspect sash windows is reflected throughout the room that is tastefully furnished with warm orange accents picked out in accessories and original artworks. All the sash windows in the property have been restored with the addition of permitted slim double-glazing, to retain the period character of the property whilst updating the thermal performance of the house.

Nestling in the Kent countryside, the manor house has extensive views over downlands.

Throughout the house, all the rooms have been stylishly brought up to date and have been sumptuously decorated in a blend of traditional and modern design, with original colour choices, custom wallpapers, mixtures of materials and textures that all knit together to create a joyful, comfortable and gorgeous home.

In the 17th century core of the house the open-plan kitchen and breakfast room is modern, light and airy, with a clever use of bench seating on the side of the island and breakfast bar that makes a handy additional dining area.

An old extension has been demolished, redesigned and rebuilt to create a superb new dining room extension and orangery. This isn't a traditional orangery where the glazed walls would stay firmly in situ: it has been given a much more modern and flexible feel with large glazed double doors allowing access to the landscaped gardens, terraces and the swimming pool, giving the all-important 'inside-outside' feel.

The contract works were beautifully executed by A T Palmer Ltd.

For further information, please contact George Esdaile of Clague Architects on 01227 762060. www.clague.co.uk

CLAGUE ARCHITECTS



PLANNING &
LISTED BUILDING
APPLICATIONS

Beautiful natural stone kitchen worktops

LARGE SHOWROOM NOW OPEN

Granite

Quartz

Marble

Slate



www.avivastonegranite.co.uk

Court Lodge Farm,
Frog Lane,
Bishopsbourne,
Canterbury CT4 5HR

Tel 01227 678007

or 07976 893646

avivastonegranite@gmail.com

Aviva Stone
South East Ltd

A stylish & modern kitchen designed to suit you



Dare to be different

Court Lodge Farm, Bishopsbourne, CT4 5HR | Phone: 01227 831663
Email: info@hogwoodhouse.co.uk | www.hogwoodhouse.co.uk





Brompton Collection

Design inspiration from the V&A archives



Pugin 3 Seater in Floral Scroll Chilli £3,992



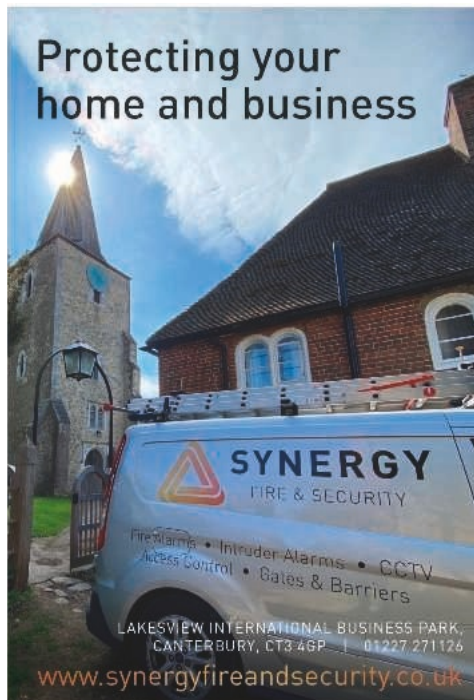
SOFAS & STUFF
Let's design together

TUNBRIDGE WELLS SHOWROOM

The Estate Yard, Eridge, Nr Tunbridge Wells, Kent, TN3 9JR

01892 572309 | www.sofasandstuff.com

Protecting your home and business



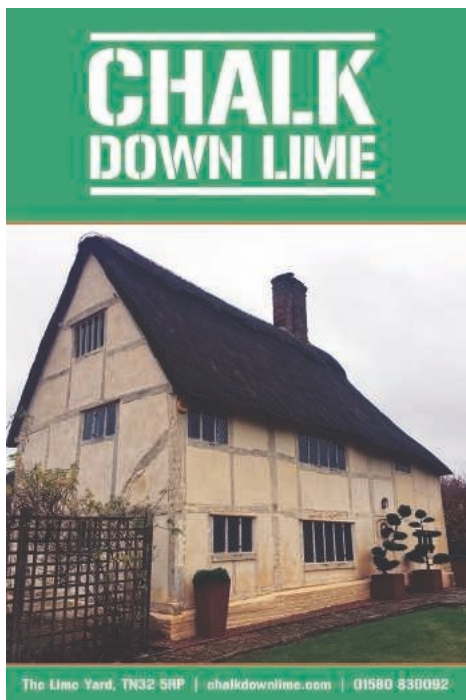
SYNERGY
FIRE & SECURITY

Fire Alarms • Intruder Alarms • CCTV
Access Control • Gates & Barriers

LAKEVIEW INTERNATIONAL BUSINESS PARK,
CANTERBURY, CT3 4GP | 01227 271126

www.synergyfireandsecurity.co.uk

**CHALK
DOWN LIME**



The Lime Yard, TN32 5RP | chalkdownlime.com | 01580 838092



DOLMEN

ENGLISH VERNACULAR CARPENTRY
KE NT

**CONSERVATION
& JOINERY**

BESPOKE ARCHITECTURAL JOINERY
ENGLISH VERNACULAR CARPENTRY | HANDMADE KITCHENS
PERIOD DOORS AND WINDOWS | SUSTAINABLE TIMBER SOURCING

dolmenjoinery.co.uk | projects@dolmenjoinery.co.uk | 01708 732 813 | 01233 746 301 | [@dolmenconservation](https://www.instagram.com/dolmenconservation)
WOODCHURCH - KENT

A reputation built on quality
craftsmanship and service

*Karl
Terry*

Roofing Contractors



Kent Peg Tiling & Listed Building Specialists.
Conservation and renovation specialists.
High quality work by experienced craftsman.
National Award Winning Company.

01797 270 268 | kentpegs.com



Researching the history of your home



Using a few fairly easily accessible tools, you can trace the history of your home and discover a wealth of information about its past owners and uses. We've assembled a few tips for you on how to go about this fascinating project.

For many years now, avid amateur history buffs have been tracking their family trees and discovering their roots, using everything from local records to specialist internet sites. It's a fascinating process and one that makes you feel truly connected to your lineage.

However, it's not just people who have interesting backgrounds: we're incredibly lucky

to be living in a part of the world where the buildings themselves can have a rich and varied history, and the latest adventure for those of us who love discovering the past is house-hunting – in a historical sense!

ESTABLISH THE AGE

The first thing you need to do is establish the age of your property. For slightly newer houses this could be as simple as looking through



your own paperwork, but for older houses this may be a bit more challenging. Start by reading up on your local history and chatting to neighbours or local historians. You can even look to the property itself for clues such as Tudor beams or Victorian slate roofs, and debris found while digging the garden can offer further insight (although you should take this with a pinch of salt – I found a stone arrowhead in my vegetable plot, but I’m fairly certain the prehistoric locals weren’t fans of 1950s architecture).

Finding out which administrative area your house is in is also important. Knowing the names of the county, registration district and parish in which your property stands will be invaluable down the road.

CONTEXT

Don’t neglect to consider how much things change with time. Street numbers and even



Photo: The Landmark Trust

names may have been altered, and this was particularly common practice in the 19th and early 20th centuries.

Additionally, up until the start of the First World War, around 90% of houses in the UK were privately rented (the Rent Act of 1915 was introduced to stop landlords taking advantage of the increased wages of munitions workers, and this ultimately paved the way for legislation that would allow more



tenants to buy their homes). Therefore you need to be aware that the owner of your house was not necessarily the occupant.

Because most of the relevant documents tend to list occupants rather than owners, you will need to look up title registers and deeds if you

want to know more about the actual owners. You can request these from solicitors and mortgage providers and, if necessary, from local archives and council record offices. They can also be ordered online from the HM Land Registry. Go to gov.uk/government/organisations/land-registry, search the register for free and fill in a request form.

ONLINE

If you're looking for more recent information (19th century and on) you will do well to check out the electoral registers for your area,

as they're second only to the census in terms of the information they provide – just remember that not everybody was eligible to vote in the early days.

Although the census has been established since 1841, there is a notable gap: the 1931 census was destroyed by fire and there was no census in 1941, so the 1939 register is your key document for this era. It will tell you the names of the occupants at the time and what they did for a living. It details every household member (including visitors, boarders and servants), and may list the details of neighbouring properties.

Go to nationalarchives.gov.uk/help-with-your-research/research-guides/census-records. Other useful sources that can be found online are rate books, Ordnance Survey maps, hearth tax records and land tax records. These take some digging, but there are dedicated sites such as ancestry.co.uk and findmypast.com that operate on a paid subscription service and have collated all this information.

PARISH RECORDS AND MORE

Similarly available online, parish records of baptisms, marriages and burials tended to include the addresses of those involved. Wills and administrations included residence details, as did court records. All these can be helpful in researching properties that predate the census.

One of the best records for history hunters are old newspapers. Thanks to somewhat lax privacy laws, old papers will often include



the addresses of persons involved in stories, including victims, criminals and witnesses. They also often feature associated photographs, sketches and even maps. The previously-mentioned research sites have scores of old articles, as will your local archive service.

OFFLINE

Speaking of which, take a trip to your local archive service. Staffed by experts, these facilities are a mine of information and act as repositories for those documents as yet unavailable online, such as estate maps and plans, as well as legal documents like title deeds. If you're finding that your online research has led you down a bit of a rabbit hole, the experts at the archive service can put you back on track. Finally, contact your local historical societies (on or offline) – these intrepid researchers may already have done much of the work for you and will be more than willing to share their knowledge.

Most of all, enjoy yourself – there's so much information out there just waiting to be discovered and you never know quite what you'll find.



HERITAGE PAINT REMOVAL

RESTORING YOUR BUILDING TO IT'S ORIGINAL BEAUTY

- DOFF INTEGRA PROFESSIONAL CLEANING - EFFECTIVE IN REMOVING
- ✦ PAINT, WAX COATINGS & GRAFFITI
- ✦ POLLUTION STAINING
- ✦ BITUMEN, OIL & GREASE
- ✦ ALGAE, MOSS & FUNGI
- CHEMICAL FREE - QUICK DRYING -
- NON HARMFUL TO ALL MASONRY -

Tel. 01227 264737 Mob. 07812 590 888
info@heritagepaintremoval.co.uk
www.heritagepaintremoval.co.uk



SCRAP METAL RECYCLING

Polite & friendly service

Fully licensed

Clearance of all metals

Unfortunately we cannot take fridges or freezers

Jason 07840 081990

7 days a week



Old English Tools



Bench planes, chisels, felling axes, bill hooks, froes, draw shaves, side axes, early garden tools, blacksmith tools, pine boxes. Cast iron log burners and fire grates.

Tools old and new bought for cash. Workshops cleared.

Essential business with restrictions.

Faversham Standard Quay, ME13 7BS

BLACKSMITHS ANVILS WANTED

Call Phil on **07796 343722 / 07850 292523**

www.countryclobberltd.co.uk



Anthony Swaine

ARCHITECTURE LTD

Conservation • Design Consultancy • Listed Buildings
Urban Design • Joinery Detailing • Traditional Shopfronts



**Initial consultation undertaken
free of charge**

**Specialising in traditional design & works to
historic buildings; timber framed structures; &
new buildings in the historic context**

The Bastion Tower,
16 Pound Lane,
Canterbury,
Kent CT1 2BZ

Tel: 01227 462680
mail@anthonyswaine.co.uk
www.anthonyswaine.co.uk



HERITAGE BRICKWORK RESTORATION LTD

† Lime Mortar Specialists †

† Historic Brickwork Repairs †
& Repointing

† Gauged Brickwork †

Tel: 01227 264 737 Mob: 07866 388 962

info@heritagebrickworkrestoration.co.uk

www.heritagebrickworkrestoration.co.uk

SOUTHERN STONE LTD Stonemasonry Specialists



**We specialise in all areas of stone works ranging from stone
cleaning to stone restoration. Our range of works include:**

**QUINQUENNIAL INSPECTIONS • STONE RESTORATION
GARDEN WALLING • GATE PIERS • WINDOWS • ARCHES
FIREPLACES • STEPS • PATIOS • COMPLETE STONE HOUSES
EXTENSIONS TO NEW BUILDS • POINTING**

Tel: 01892 263436 • Mob: 07837 970835

Email: southernstone@live.co.uk

www.southernstoneltd.co.uk



Smarden Business Estate, Smarden, Ashford TN27 8QL
Tel: 01233 770373 email: info@ashscaffoldingltd.co.uk
www.ashscaffoldingltd.co.uk



- Ecclesiastical work
- Flint work
- Heritage brickwork
- Lime pointing/render
- Fully insured
- New builds & extensions
- All work quoted for
- Traditionally trained craftsmen

Tel: 07856 266795

e-mail: conservation-construction@outlook.com





HOW TO... PATCH LIME PLASTER

Houses built before World War II would have been plastered with traditional lime plaster. Old plaster cannot be replaced with a material as good or better, so it's generally best to salvage as much as possible.

- Follow the golden rules of restoration and conserve as much original material as possible and always replace like with like.
- Use a craft knife to cut away unbonded plaster until you have a firm edge.
- Clear loose particles with a stiff brush.
- Mix builder's sand and sharp sand in differing proportions to replicate the original texture. On a board mix one part lime putty to three parts sand. Chop and turn until it becomes soft.
- Use a plasterer's hawk and a gauging trowel to push it into the wall.
- Don't be tempted to smooth it until it has firmed up and use the edge of the trowel to cross-hatch the surface for the next coat.
- Cover with damp hessian to stop it drying out. Wait until it is hard before applying the next coat.
- Allow the plaster to become firm before polishing with the trowel. Lime putty can be used to fill small dents and cracks, but always remember to dampen the wall first.
- Allow to cure and decorate with a microporous finish, such as limewash.

NON FERROUS METAL RECYCLING AND WASTE HANDLING

We specialise in factory grades of metal including brass cuttings, phosphor bronze cuttings and copper cuttings.

- Factory clearance specialists
- Regular collection of manufacturers' scrap metal for recycling
- Drive-in scrap metal drop-off
- 50 tonne digital scrap metal weighing facilities
- Skip collection and drop-off service
- Flat bed and HIAB lorries available
- Fast, efficient service with immediate payment (cheque)
- Members of the British Metals Recycling Association
- Environment Agency approved

**We pay competitive prices for
all the following grades:**

- Copper
- Brass
- Lead
- Copper tanks
- Aluminium
- Cables
- Silver
- Gold

TEL: 01227 713850

CALL FOR CURRENT PRICES

Open to the public & trade

Mon-Fri, 8am - 5pm

Sat, 8am - 12 noon



JOHN BUTCHER BROS

www.johnbutcherbros.co.uk
info@johnbutcherbros.co.uk



Unit 12, Canterbury Ind Park, Island Road, Hersden, Canterbury CT3 4HQ

Winter Wonderlands

Kent has no shortage of places to offer to those looking for a fun family day out, but people often worry that, once summer is over, there will be nothing left to do.

Whilst it's true that many of the county's stately homes and historic buildings do shut for the winter, the grounds and garden of these historic treasures can be just as enticing for those of us who love to take in the winter air.

We've put together a list of some of Kent's stately homes with gardens (and houses in some cases) that open throughout the winter.

Make sure that you keep hold of this article because we've also added a little bit of info about the houses themselves to keep you inspired come spring.

(Please check the websites for these amazing locations.)

BELMONT HOUSE a great house & gardens to visit anytime of the year



Belmont House is at the centre of a beautiful Estate, nestled away in the countryside just outside of Faversham in East Canterbury.

The grounds of the Estate cover over 3000 acres and include delightfully landscaped gardens, a much used cricket pitch and fruitful orchards, as well as farmland and woodland.

The house is an 18th century construction designed by Samuel Wyatt, and contains the collections of five generations of the Harris family; including paintings, objet d'art and a renowned clock museum.

- Gardens open through winter 10am – dusk
- Café open for self service
- Garden adult entrance fee £7
- Parking available
- Events on at various times: see website
- Dogs on leads welcome in gardens.

Belmont Park, Throwley, Faversham, Kent, England, ME13 0HH

Tel 01795 890202

www.belmont-house.org/

CHARTWELL family home and garden of Sir Winston Churchill



Chartwell is famous for being the family home of Winston Churchill, and the house itself boasts a magnificent collection of Churchill memorabilia, as one might expect. The house is still much as it was when the family lived here. The spectacular gardens offer a wonderful view across a private lake and provide a relaxing haven for winter walks.

- Gardens open through winter 10am – 4pm
- House open for events some weekends
- Studio open throughout 12pm – 5.30pm
- Restaurant and shop open 10am – 4pm
- Garden and Studio adult entrance fee £14*
- Parking £4* (* free for NT members)
- Dogs on short leads welcome in gardens

Mapleton Road, Westerham, Kent TN16 1PS
www.nationaltrust.org.uk/chartwell

CHIDDINGSTONE 35 acres of informal grounds



Around 35 acres of informally laid grounds and spectacular views of the Greensand Ridge below the North Downs make these gardens the perfect spot for avid walkers. Additionally, the estate's website provides details of three established walking routes from 4 miles to 11 miles long, to give ramblers a selection of options.

- Gardens open through winter 7am – 6.30pm
- Suggested £3 donation
- Parking available
- Dogs on short leads welcome in gardens

Hill Hoath Road, Chiddingstone,
 Edenbridge, Kent TN8 7AD
www.chiddingstonecastle.org.uk/

HALL PLACE & GARDENS one of the south east's best kept secrets



Hall Place manor house was built in 1537 for ex-Lord Mayor of London, Sir John Champneys. The interior great hall is Tudor complete with original panelling and overlooked by a minstrel's gallery. The gardens are set within a 65 hectare estate offering some outstanding examples of horticulture and wildlife.

- Gardens open through winter 9am – 5pm
- Café, garden centre and shop open 10am – 4pm
- No entry fee for gardens
- Parking available
- Events on at various times: see website
- Assistance dogs only

Bourne Road, Bexley, Kent, England, DA5 1PQ
www.hallplace.org.uk/

IGHTHAM MOTE a medieval moated manor house



The impressive and dramatic entrance to Ightham Mote tells you all you need to know: this immaculate 14th Century manor house is heaven for history buffs, while the gardens feature lakeside and woodland walks. The estate itself is also worth exploring if you have the time and the weather; as its rambling land is conveniently divided into three suggested walks.

- Gardens & House open through winter – times vary (see website)
- Restaurant and shop open 10am – 4pm
- Gardens and Estate, adult entrance fee £5.40
- Parking available £3 (* free for NT members)
- Dogs on leads welcome in gardens during winter

Mote Road, Ivy Hatch, Sevenoaks, Kent, TN15 0NT
www.nationaltrust.org.uk/ightham-mote

KNOLE HOUSE one of the largest houses in England



The 12th Century estate at Knole was purchased in 1456 by Thomas Bouchier, Archbishop of Canterbury. Bouchier's transformed the old medieval manor into the beautiful house we see today. It was passed into the ownership of the Sackville family, who still live there today, and who have adorned it with artistic treasures to fascinate and inspire visitors.

- Gardens & House open through winter times vary (see website)
- Café and shop open 10am – 4pm
- Whole property adult entrance fee £10
- Parking available pre-booked only
- Dogs on leads welcome in park (there are wild deer on the property)

Sevenoaks, Kent, England, TN15 0RP
www.nationaltrust.org.uk/knole

SISSINGHURST CASTLE & GARDENS



Sissinghurst has a diverse history, but it's perhaps most famous for being the home of writer and poet Vita Sackville-West. Vita and her husband worked tirelessly on the castle's gardens throughout the 1930s and the National Trust have endeavoured to maintain much of what she created, leaving visitors with a fantastic day of exploring ahead of them.

- Gardens & House times vary (see website)
- Restaurant and shop open 10am – 4pm
- For events see website
- Whole property adult entrance fee £11
- Parking available £4
- Dogs on leads welcome (not in gardens or house)

Biddenden Road, Sissinghurst,
nr Cranbrook, Kent, TN17 2AB
www.nationaltrust.org.uk/sissinghurst-castle-garden



SPECIALISTS IN ROOFING



Canterbury Roofing and Building is a family-run business with over 35 years' experience working in Kent and surrounding areas. We have vast experience of conservation and other roofing works.

- Guttering
- Flat roofing
- Velux and sky lights
- Conservation work
- Tiling
- Pointing and chimney work
- Slating
- Lead work



**FOR MORE INFORMATION
AND TO CONTACT US:**

www.canterburyroofing.com

Tel: 01233 647867

or 07976 325520

info@canterburyroofing.com



SUTTON VALENCE SCHOOL

The heart of Kent education, where each
cares for all and individuality is cherished



- Co-educational independent day and boarding school for pupils aged 11 - 18
- Extensive facilities, set in acres of stunning Kent countryside
- Newly refurbished accommodation for part, weekly and full boarding
- Scholarships available

Visit our admissions page for more information - svs.org.uk

Call us on (+44) 0 1622 845200

Email our Admissions department at admissions@svs.org.uk





BENENDEN
A COMPLETE
EDUCATION

Day Boarding at Benenden

Now welcoming day boarders
in Years 9 and 12



New School Hall and Music School Opening 2022



Details at www.benenden.school/day

Benenden School

Benenden School offers an insight into its history, ethos and educational opportunities.

For 97 years Benenden has been educating girls successfully. Our alumnae look back on their Benenden education as one that has taught them a great deal and offered them a wealth of very fond memories and friendships to take them throughout their lives.

Historical material held in the archives dates back to around the 17th century, with maps, documents, drawings and photographs chronicling the history of Hemsted House. The site on which the school stands is of great historical interest, as both the parkland and woodland are mentioned in the Domesday Book: "Robert of Romney also holds Benenden [Benendine] from the Bishop of Bayeux". Benenden had become sufficiently permanent by 1086 to have both a name and a church.

In 1216 Robert of Hemsted built the first house on the site; this was later visited by Elizabeth I before being demolished in 1860 by Lord Cranbrook, who replaced it with a new mansion slightly to the east. This newer building was remodelled by Sir Harold Harmsworth, later Lord Rothermere, into the Tudor-cum-Jacobean style we see today.

In 1923 three teachers from



Wycombe Abbey announced the foundation of a new public school, and 24 girls were registered for their first year at a temporary location in Bickley, while the founders searched for a permanent location. They were leased Hemsted Park the following year and began operating as Benenden School in 1924.

Today, there are 550 girls in the school, aged 11-18, and Benenden has earned a reputation as an expert in teenage girls and at the forefront of innovative education. As we approach our





centenary in 2023-24, we are about to open our most ambitious construction development in our history: our new School Hall and Music School. We have also recently welcomed our first day boarders, and in September we opened our new dedicated boarding house for the Fourths (Year 7 girls). In addition, our first overseas school will open in south China in 2023.

At Benenden we offer every girl A Complete Education, in which she realises her academic potential, grows as an individual and is well-prepared for life beyond school.

This is achieved through an outstanding academic offering which will help a girl achieve her very best, together with unrivalled co-curricular opportunities and a dedicated focus on developing every girl's personal and professional skills.

At Benenden we aspire for excellence in all that we do. Motivational teaching through a dynamic and challenging curriculum is central to our educational offering. All the girls are

expected to engage in the extensive range of subjects offered. They will leave us not only with excellent results at A Level, but very importantly with an understanding of the world in which we live, skills in critical thinking, practical skills such as financial management, a flavour of the world of entrepreneurship and business, as well as the knowledge of professional skills which will support them in the world of work beyond university.

Crucially, we work with every girl to discover and nurture the passion that will drive whatever path she might want to follow. We will support her in achieving more than she would have thought possible when she first entered the school and, by that, instil within her the self-belief that she can embrace her future with confidence. As we prepare the girls for life beyond Benenden, it is important to equip them with the skills to work effectively with others, lead with confidence, understand themselves and manage a healthy work-life balance.



CO-EDUCATIONAL | 13 - 18 YEARS | DAY & BOARDING

“A thriving academic school in exquisite surroundings
steeped in history, with highly motivated
pupils who are hungry to learn”

THE
GOOD
SCHOOLS
GUIDE



Baillie Hall, Great Chart

Set on high ground at the edge of the village and enjoying distant views over adjoining countryside, Baillie Hall is a truly outstanding Grade II* Listed Tudor manor house. The property has been fully restored by the current owners and is presented in a style that is at once charming and peaceful with rooms elegantly dressed to show them to their fullest extent.

Dating in parts back to the 15th Century, the house was extended in 1914 by renowned architect Baillie Scott, and the Arts & Crafts influences throughout work in harmony with the original Tudor wings of the house.

The rather splendid principal front door is on

the eastern flank and opens into a welcoming entrance hall with a delightful cloakroom to the right. From the hall, timber steps rise from the parquet brick floor into the main drawing room. This glorious yet comfortable room exudes an overwhelming sense of calm and serenity, with leaded light windows looking onto both the south and north aspects which fill it with light, whilst the many original Tudor features include a large inglenook fireplace and beamed ceiling. A door to the right of the fireplace opens into the magnificent dining room, an atmospheric space with panelling to three-quarter height and deep windowsills – it is a room that works perfectly for an intimate or more formal dinner party.



Off the main drawing room and facing south is a charming study which has a beautiful fireplace edged with original Arts & Crafts tiles and has French doors to the garden. From here a parquet brick passageway leads through to the wonderful kitchen, a sizeable room with ample space for a farmhouse table and chairs, which features a deep fireplace housing a three oven oil-fired Aga. Adjacent to the kitchen is a cosy snug which leads to two further rooms, a utility/scullery room and a quirky butler's pantry with a door leading back to the dining room.

Beyond the dining room is a third reception room; an elegant sunny sitting room, which was originally Baillie Scott's studio that has high ceilings and lovely views across the garden to the fields beyond. A door leads through into a small entrance lobby with a door opening outside onto Padwell Lane. Off the lobby is a light pleasant bedroom with Arts & Crafts fireplace and a large, smart adjacent bathroom.

The main staircase rises from the hall to the first floor landing. Two beautiful bedrooms both with original fireplaces face the front and have lovely views across the gardens. To the end of the passageway is a family bathroom.

The stunning master bedroom has exposed oak beams and a deep Delft tiled fireplace; it is a lovely airy room and a great place to wake up in. The en-suite bathroom is beautifully styled with reclaimed claw-foot bath, twin sinks and bidet.

A secondary staircase leads down to the ground floor, and also up to the second floor, which can also be accessed by a further staircase at the other end of the passageway. The main second floor space is taken up by a high ceiling beamed room which doubles as a bedroom and large study with double aspect windows. Adjacent is a further small study or dressing room. At the other end of the main room is an en-suite bathroom. This bathroom is a shared (Jack and Jill) bathroom with a further bedroom

beyond. This bedroom has access to a secondary staircase to the ground floor.

Adjacent to the kitchen door, is a useful outbuilding with a quaint WC, boiler house and two store rooms, but with the necessary consents, could convert to either separate accommodation or a home office/study.

Approached through electronic double gates there is a large parking and turning area beside a three-bay oak-framed car port and store room, from here paths lead to the main house. To the right of the main path is an open, lawned area with lovely box parterre hedging. The beautiful side and rear gardens are informally landscaped with large lawns, mature beds and an orchard of fruit trees planted with thousands of spring bulbs and summer meadow flowers. A ragstone path and terrace leads to the main lawn which has a feeling of privacy but has lovely rural views.

The details

Entrance hall • Drawing room • Dining room • Sitting room • Study • Snug • Kitchen/breakfast room • Pantry • Utility room • Butler's pantry • Ground floor guest bedroom with en-suite bathroom • Cloakroom • Cellar • Master bedroom with en-suite bathroom • 4 Further bedrooms • 2 Bathrooms • Outbuilding comprising WC, boiler room and 2 store rooms • 3 Bay open garage with garden store • Gardens

Strictly by appointment with Strutt & Parker. Tel: 01227 473700

Price: £1,545,000

canterbury@struttandparker.com

www.struttandparker.com









Kentish

FOOD • DRINK • PRODUCE

Local & loving it!

Our county is packed full of fine food and drink.
From furrow to orchard, from marsh to shore -
Kent is crammed with foodie delights.

Fabulous locally produced food includes just-caught fish;
superb oysters; tender Romney Marsh lamb; sweet soft fruit and
tangy apples. Wash it down with locally-made, world-class wine;
a crisp cider or a traditionally brewed beer.

All this makes Kent an outstanding place to eat out.
From contemporary Michelin-starred restaurants to
characterful eateries graced by log fires or stunning sea
views. Kent offers everything from fine dining and gourmet
Asian cuisine, to great grub in rural pubs.

Kent is also renowned for its orchards abundant with apples,
pears and cherries. Fertile soil, a favourable climate and
centuries-old expertise create prime growing conditions.



THE OYSTER PEARL

PUB & RESTAURANT



**FOR LOCALLY SOURCED & FRESHLY
PREPARED DISHES EVERY DAY**

British and Pan-Asian cuisine. Serving high quality and creative dishes

We offer diners a safe environment with hand sanitisers, social distancing measures and full table service.



185 FAVERSHAM ROAD, WHITSTABLE CT5 4BJ • TEL: 01227 272705

WWW.THEOYSTERPEARLRESTAURANT.COM





OPENING TIMES

Lunch: Tue - Sun 12 noon - 2.30pm

Evenings: Tue - Mon 6pm - 9.30pm



Birdies is one of Whitstable's oldest family run restaurants, serving brilliant locally caught fresh fish features alongside great French classics.

41 Harbour Street, Whitstable CT5 1AH Tel: 01227 265337

www.birdiesrestaurant.co.uk

THE OLD NEPTUNE

Marine Terrace, Whitstable CT5 1EJ

01227 272262 • www.thepubonthebeach.co.uk



OPENING HOURS

Mon - Wed: 11.30 - 10pm Thurs - Sat: 11.30 - 11pm

Sun: 12 noon - 9pm

Food served all day Saturday & Sunday from 12-4pm



Mon - Fri 12 noon - 4pm & 5pm - 8.15pm



LIVE MUSIC

SUNDAYS 6-8PM

Dec 5: Bob Dillan

Dec 12: Big Orange Head

Dec 19: Deep River Blues

Jan 9: Barracuda

Jan 16: Steve Bolton

Jan 23: Nightwatch

Jan 30: Big Orange Head

Feb 4: Rambling Stomp Box

Feb 13: Under The Wood

Feb 20: Bill Dan & Saxby

Feb 27: The Reps

WORGAN'S FARM SHOP

Independent farm shop and butchery bringing
the best from local farms and further afield



Worgan's Farm Shop

Frog Lane, Bishopsbourne, Canterbury CT4 5HU

Open Tuesday to Saturday, 8am - 4pm

Tel: 01227 832814



— LOCAL —
Farmers' markets



Support your local farmers' market

For more information and to find out what's in season visit www.kfma.org.uk.

DECEMBER

WEDNESDAY: 1st, 8th, 15th, 22nd & 29th Rye

THURSDAY: 2nd, 9th, 16th, 23rd & 30th
Hastings; Rolvenden; Shipbourne

FRIDAY: 3rd
Egerton; Sevenoaks; Tenterden

SATURDAY: 4th
Biggin Hill; Chatham; Deal;
Gravesend; Penshurst; Tunbridge Wells; Whitstable Castle; Rye

SUNDAY: 5th
Tunbridge Wells

TUESDAY: 7th, 14th, 21st & 28th
Capel-le-Ferne; Hildenborough

FRIDAY: 10th, 17th, 24th & 31st
Egerton; Tenterden

SATURDAY: 11th
Bridge; Deal; Gravesend; Hythe;
Tunbridge Wells; Whitstable

SUNDAY: 12th
Herne Bay; Lenham; Tonbridge;
Tunbridge Wells

SATURDAY: 18th
Deal; Gravesend; Tunbridge Wells;
Wye

SUNDAY: 19th
Aylesford; Rochester; Staplehurst
Tunbridge Wells; Watlington

JANUARY

SATURDAY: 1st
Biggin Hill; Chatham; Deal;
Gravesend; Penshurst; Tunbridge Wells; Whitstable Castle; Wye

SUNDAY: 2nd
Tunbridge Wells

TUESDAY 4th, 11th, 18th & 25th
Capel-le-Ferne;
Hildenborough

WEDNESDAY: 5th, 12th, 19th & 26th Rye

THURSDAY: 6th, 13th, 20th & 27th
Hastings; Rolvenden; Shipbourne

FRIDAY: 7th
Egerton; Sevenoaks; Tenterden

SATURDAY: 8th
Bridge; Deal; Gravesend; Hythe;
Tunbridge Wells; Whitstable

SUNDAY: 9th
Herne Bay; Lenham; Tonbridge;
Tunbridge Wells

SATURDAY: 15th
Deal; Gravesend; Tunbridge Wells;
Wye

SATURDAY: 22nd
Bridge; Cranbrook; Deal;
Gravesend; Hythe; Knockholt;
Whitstable

SATURDAY: 29th
Deal; Gravesend

FEBRUARY

TUESDAY: 1st, 8th, 15th & 22nd
Capel-le-Ferne; Hildenborough

WEDNESDAY: 2nd, 9th, 16th & 23rd Rye

THURSDAY: 3rd, 10th, 17th & 24th Hastings; Rolvenden; Shipbourne

FRIDAY: 4th Egerton; Sevenoaks; Tenterden

SATURDAY: 5th Biggin Hill; Chatham; Deal; Gravesend; Penshurst; Tunbridge Wells; Whitstable Castle; Wye

SUNDAY: 6th
Tunbridge Wells

FRIDAY: 11th
Egerton; Tenterden

SATURDAY: 12th
Bridge; Deal; Gravesend; Hythe;
Tunbridge Wells; Whitstable

SUNDAY: 13th
Herne Bay; Lenham; Tonbridge;
Tunbridge Wells

SATURDAY: 19th
Deal; Gravesend; Hythe;
Knockholt; Whitstable

SUNDAY: 20th
Aylesford; Rochester; Tunbridge Wells; Watlington

SATURDAY: 26th
Bridge; Cranbrook; Deal;
Gravesend; Hythe; Knockholt;
Whitstable



Bull Green Farm

QUALITY FARM PRODUCE

Bull Green,
Bethersden TN26 3LB
Tel: 01233 822463
Email: Shop@BullGreenFarm.co.uk

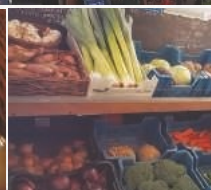
We are a family-run farm rearing Dexter cows, sheep and chickens. We believe animals should be able to roam free in the fields and enjoy fresh air and green grass.

We have a nicely stocked shop with fresh eggs daily, home grown veg, and a variety of local products such as Kentish honey, jams, and occasionally freshly baked cakes. We also have a freezer packed with locally made pies and tasty treats.



LOWER HARDRES FARM SHOP

- In-house butchery
- Free-range geese; chickens; local game, pork, beef and lamb
- Fresh local produce
- Fruit, vegetables and salad, sourced as locally as possible
- Cheese and deli products
- Stockist of The Chai Stop finest curries
- Seasoned logs, coal and kindling
- Skinners dog food; bird food
- Local wines and ciders



www.lowerhardresfarmshop.co.uk email: info@lowerhardresfarmshop.co.uk
Lower Hardres Farm, Lower Hardres, Canterbury CT4 5NU Tel: 01227 700947

MACKNADE

TOGETHER WE CAN SPREAD A LITTLE HOPE THIS CHRISTMAS

We believe in the power of food & drink to create, maintain & enrich communities.

This year we're making a **£5 donation on your behalf to Porchlight** - Kent's leading homeless charity - for every order placed in our online Christmas shop.

This could help towards the cost of Christmas lunch for someone living in a Porchlight property, or fund an essential check in, to keep someone in the Kent community off of the streets.

Help us bring hope to those experiencing homelessness this year...

**BROWSE OUR CHRISTMAS SHOP &
PLACE YOUR ORDER ONLINE TODAY**



IN AID OF
Porchlight 
Registered charity no. 267116



SCAN ME

FIND OUT MORE - WWW.MACKNADE.COM

The Secret Supper Club

The Secret Supper Clubs have become a not so well-kept secret within the Curious Eatery crowd.

www.thecuriouseatery.co.uk





From Victorian orchid houses to cider orchards, you could be feasting pretty much anywhere. Each Supper Club is held at a different top-secret location which even the guests don't find out about until two days before it happens.

The only way to get an invitation is to ask (very nicely) if you can join their invite list and only then will you be able to dine in one their weird and wonderful locations. In keeping with the experience-led dining, you will be taken to an enchanted supper where you'll drink great wines, feast on delicious food and meet wonderful people.

Working closely with the talented people at Hire Love, The Curious Eatery team turn any space into a magical and unforgettable evening. Each menu is devised to work with the surroundings and the land is an integral part of how the chefs showcase not just the food, but the venue and the season.



The latest Supper Club was held in Sissinghurst, at Crossways, a beautiful Victorian orchard house that was built in 1894. The venue had formerly been a pig farm which naturally lent itself to the chefs incorporating pork into the menu. As the event was held in the autumn, the chefs wanted to use produce from their allotment, and in what turned out to be a happy accident, they tried a perfect planting trio of pumpkins, sweetcorn and climbing beans from which they created their delicious 'Three Sisters' salad' which has become a staple part of their seasonal autumnal menus.



This lush chorizo and chicken stew recipe is inexpensive but delicious.
Try serving it with crusty bread.

Winter Warmers

Two's Company is a book with a positive message that cooking for two is exciting, fun and worthwhile. More than that – free from the demands of family or guests, liberated from a strict timetable, you can follow your mood, whether you fancy something homey, a fake-away or a creative culinary adventure.

**SERVES
FOUR**

CHICKEN WITH OLIVES AND BUTTER BEANS

YOU WILL NEED

- 2 tbsp olive oil
- 2 tbsp red wine vinegar
- 4 cloves garlic, crushed
- 1 tbsp clear honey
- 3 sprigs fresh oregano
- 350g can Fragata stoneless Manzanilla olives filled with chorizo, drained
- 8 dried apricots, sliced
- 8 chicken thighs, trimmed of excess skin
- 100ml white wine
- 400g can butter beans, rinsed and drained

METHOD

In a large mixing bowl or resealable food bag, mix the oil, vinegar, garlic and honey. Stir in the oregano sprigs, olives, apricots and chicken thighs. Season, cover if using a bowl, and set aside to marinate in the fridge for at least 1 hour (or up to 12 hours).

Preheat the oven to 200°C, gas mark 6. Pour the wine into a large roasting tin, then add the chicken, skin-side up, and the marinade ingredients. Roast for 40 minutes, basting the chicken in the juices every 15 minutes, until cooked through and the juices run clear, with no pink meat. Lift the chicken out of the tin and arrange on plates. Stir the butter beans into the tin and return to the oven for 6-8 minutes.

Spoon the hot olives, beans and juices over the chicken (or add the chicken back to the tin if taking the roasting tin to the table) and serve immediately with couscous, rice or mashed potato and some steamed greens, if liked.

COOK'S TIP

Plating the chicken while you heat the beans in the sauce allows it to rest and become more tender.

Recipe courtesy Waitrose.com

SERVES TWO

CHOCOLATE LAVA PUDDING

YOU WILL NEED

25g butter, plus extra for
the dish

20g dark chocolate,
chopped

4tsp cocoa powder

4tsp sugar

2 tbsp milk

1 egg yolk, any size

1tsp vanilla extract

25g self raising flour, or
25g plus 1/4tsp baking
powder (see Trick of the
Trade)

a pinch of salt

FOR THE TOPPING

3tbsp soft brown sugar

1tbsp caster sugar

4tsp cocoa powder, plus
a little extra to finish

FOR THE SAUCE

120ml boiling water,
or a mixture of boiling
water and coffee

double cream or
whipped cream to serve

METHOD

Melt the butter, chocolate and half the cocoa powder together in a medium jug/pitcher or bowl in the microwave and allow to cool slightly. Whisk in the sugar, milk, egg yolk and vanilla, then the flour and a pinch of salt. Transfer to the prepared dish.

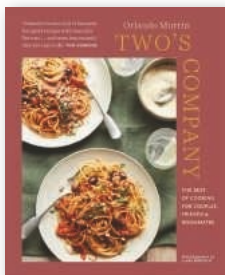
Mix the topping ingredients in a small bowl with a fork, and sprinkle evenly over the pudding. Finally, carefully pour the boiling water gently over the top.

Bake the unpromising mixture at 160°C/fan 140°C/gas 3 for about 35 minutes, until the pudding is firm in places, and gently bubbling. Leave for 5 minutes, dust lightly with cocoa powder, if liked, then serve with cream, because why not?

TRICK OF THE TRADE

I know from experience that many a cook gets hot under the collar with regard to plain and self-raising flour. I keep both in my storecupboard, purely for convenience, but you can convert plain to self-raising by whisking 100g plain flour with 1 teaspoon baking powder. It's that simple – but don't use bicarbonate of soda by mistake.


While talking flour, scientific experiments have shown that whisking and sifting flour achieve the same thing. By all means sift flour if you wish – hold the sieve high over the bowl if you want to get flour over the entire kitchen – but a quick whisk in the bowl does the same job, believe me.



Recipes taken from *Two's Company* by Orlando Murrin, published by Ryland, Peters & Small (£18.99) with photography by Clare Winfield.



This could not be more different from lemon lava pudding – intense, fudgy and utterly decadent. Under the chocolate crust is a pool of chocolate sauce. To turn this into a delicious mocha lava pudding, swap the boiling water in the sauce for a strong, freshly brewed coffee.



The
BLACKSMITH'S
Arms

17th century village pub, near the Pilgrims Way, set in rolling downland countryside. An inglenook log fire gives a warm welcome in winter. Good quality, locally sourced food served. No children under 14 allowed in bar or restaurant. No vegetarian options available.

Wednesday - Saturday, 7pm - 11pm (must pre-book for food)
 Sunday 4pm - 11pm. No lunches being served at present.

The Street, Wormshill, Sittingbourne ME9 0TU
 Tel: 01622 884386

HERMAN'S PLAICE



UNIT 10, STANDARD QUAY,
 FAVERSHAM, ME13 7BS



**WE HAVE ONE OF THE LARGEST
 SELECTIONS OF FRESH AND FROZEN
 FISH & SEAFOOD IN KENT**

Tel: 01795 591075

Open: Tue-Sat, 9am - 5pm | Sun, 10am - 4pm


Please shop local & support small independent businesses.

CHILHAM SHOP
 Farm shop & plant centre

Canterbury Road, Chilham CT4 8DX
 Tel: 01227 730348 | chilhamshop.co.uk
FREE LOCAL DELIVERIES

Serving Chilham and the surrounding villages for over 35 years with a wide range of fresh, fruit, vegetables, cut flowers, garden plants as well as a good selection of general groceries, dairy, bakery, frozen foods and much more.

Mon to Sat: 8:30am to 6pm Sun: 9am to 5pm. And Chilham Post Office



FREE DELIVERY to Chilham and neighbouring villages

PERCIVAL'S REST



Coffee & Cake

Every Tuesday between 3pm and 5pm



Quiz Nights

Hosted by local charities, please contact us directly if you wish to host your quiz night. Keep an eye on social media for quiz nights you can attend!



Breakfast

Served every Saturday from 9.30am till 1pm



Bottomless Brunch

£20 per person every Saturday from 11am till 1pm. Inc any dish from the breakfast menu and unlimited Prosecco, Bloody Mary or soft drink.



Steak Night

Every Thursday for £35 for two, includes a bottle of wine
Evening menu also available



Live Entertainment

Keep an eye out on our social media for updates!

BOOK YOUR TABLE ONLINE NOW

CONTACT US

West St
Harrietsham
Kent ME17 1HX

01622 587518
www.percivalsrest.com





Vino wine shop & tastings

ROWENA HAWTIN DISCOVERS A LITTLE
GEM IN THE HEART OF FAVERSHAM

Strolling through Faversham High Street as winter approaches, the town has a unique charm with its historic buildings and variety of independent retailers. Vino is one of these – a wine shop that offers daily tastings, antipasti and coffee, where you can also stop off for an hour or so to sample their generous selection of wines by the glass and, if you're hungry, enjoy a delicious plate of charcuterie which can include Italian cheese, meat, olives, bread and other tasty offerings.

Owned and run by Italians, the inside is reminiscent of an Italian Enoteca – a local wine bar where locals (and tourists) gather to chat, drink and enjoy a glass or two of wine – a little

bit of Italy in the middle of Kent. The inside is very small – the front of the shop has a small bar where you can sit on stools and enjoy the ambience, and at the back there are two tables which can seat up to four guests each, and a further table for two where you can gaze out of the window enjoying a little bit of people-watching. The venue is so small that booking is essential for Friday and Saturday evenings, but during the week you can pop in any time.

We were bowled over by our welcome and how friendly and polite the staff were, and were even upgraded to a table in the back room. The blackboard has a generous selection of wines you can enjoy by the glass – not all Italian – a range of wines from a variety of different countries including red, white and sparkling.

We opted for the Nerello to start – a blend of Nerello Mascalese and Cappuccio which are black grapes native to Sicily – mostly associated



with the red wines from the volcanic soils around Mount Etna. Nerello Cappuccio is rarely made into a varietal and is usually used in blends with Nerello Mascalese to add perfume and colour and soften the tannins of this higher-quality, but slightly harder-edged wine. Nerello Mascalese is often grown at very high altitudes on the volcanic soils of Mount Etna – some of

the highest vineyards in Europe – and the cooler temperatures enable the grape to develop slowly over the ripening season to create immense character and depth. Our wine had fresh red fruit aromas, a herbaceous character, a touch of earthiness and excellent minerality – perfect to complement our Italian fare.

We were savouring this delicious wine when our plate of charcuterie arrived – cold meats, a variety of Italian cheeses, bread, and paté served with a hefty dose of smiles. Whilst we worked our way through the food, we were thinking of which wine to try next and, as we were in Italian mode, we thought we'd stick to Italian wine. They didn't have any more Italian reds on the blackboard, so we asked what else they had and hey presto, a magnum of Primitivo arrived – oh, sorrow, we were driving!

Primitivo is mostly grown in Puglia in Southern Italy – in fact it is the same grape as



Zinfandel, famous in California. It is a black grape variety frequently associated with the denomination Primitivo di Manduria DOC. A classic Primitivo is high in alcohol and tannin, intensely perfumed with black fruit such as plums and cherries and can age for many years, which helps to soften the tannins and integrate the flavours. Primitivo has experienced a revival recently, partly due to the fame of Zinfandel across the Atlantic.

The wine we had did not disappoint – deep purple in colour, beautiful soft black fruit, ripe, well-integrated tannins which were silky smooth, with a touch of spice such as nutmeg and a hint of vanilla from the barrel ageing. Although the alcohol was high – I didn't see the label but would estimate it at around 14.5% – it didn't burn the throat because it was so well-integrated with the intensity of the fruit, coupled with good acidity, so that it slid down just a little too easily!

It is true that magnums are better than standard bottles for maturing wine (not only Champagne) because, with twice the volume of a

normal bottle, the wine matures more slowly and develops more complexity as it ages. This was definitely the best Primitivo I have tasted and we wanted to buy the bottle, but sadly this was the only one they had and naturally they would want to offer it to other guests. We keenly await the one on order but are told it might be a while.

The consistent positive online reviews for Vino are truly well-deserved and if you fancy a couple of hours relaxing after a hard day's work, popping in to buy a bottle to take home with the pizza or other takeaway, or spending a couple of hours with friends in the evening, then Vino will make you feel most welcome. Our time at the table was coming to its end, and the place was beginning to fill up with Friday night customers ready to relax and enjoy a glass or two of wine to wind down at the end of the week. We will most certainly be back. I think we'll take the train next time, though!

Rowena Hawtin (Dip WSET)

www.vinofaversham.co.uk Tel: 01795 531875

9 Court Street, Faversham ME13 7AN

COPPERS BISTRO



Café ✦ Kitchen ✦ Bar



NEW YEAR'S EVE

31st December, 7.30pm.

Welcome drink; hot & cold 2-course buffet; music and toast at midnight included. Music from Keith Rush

£49.95 pp

£15pp deposit payable on booking. Please inform of any dietary requirements.

NEW YEAR'S DAY

Open 10am to 4pm for breakfast and roast dinner.

COPPERS 4TH BIRTHDAY

Date: 4th February

Celebration DJ and buffet.

VALENTINE'S DAY

14th February

Welcome drink of bubbles and four-course dinner.

£49.95 pp

BURNS NIGHT

25th February

Celebration dinner - three courses, £34.95, with a wee dram for the toast.

PLUS PRIVATE EVENTS

Phone for further details

The Street, Preston, nr Wingham, Canterbury CT3 1ED



Tel: 01227 728580



COLLINS BESPOKE

Beautifully handcrafted, thoroughly bespoke.

Old Surrenden Manor, Bethersden, Kent.
www.collinsbespoke.com

