

# CONSERVATION NEWS

West Kent & The Weald

Summer 2022 • Complimentary

Railings and  
boundaries

*Creating the perfect*  
**BEDROOM**





Set over two floors; you will find a completely unique 3500 sq. ft. of truly spectacular showroom, allowing you to experience an extensive range of beautiful kitchens, bedrooms, studies and other bespoke furniture.

Please call us to book in a design consultation



# GREAT BRITISH KITCHENS & INTERIORS

[www.handmadekitchens.co.uk](http://www.handmadekitchens.co.uk)

01959 532233



## Opening times

Monday - Friday 8am-4pm

Saturday 8am-2pm

## Visit our beautiful showrooms

@ Orchard Barn;  
opposite Polhill Garden Centre,  
Badgers Mount, Sevenoaks, TN14 7AD

# Ashford & Cranbrook Roofing<sup>TM</sup>

— Experts in heritage roofing —



Now producing hand-made clay Kent Peg tiles for our customers

[www.cranbrookroofing.co.uk](http://www.cranbrookroofing.co.uk)



**Tel: 01580 242925**



# Welcome

Summer 2022



*Competition winners from our spring issue:  
Tea at The Palace: Yvonne Kingham, Tonbridge.  
Boy in a China Shop: Sue Hart, Charing.*

Welcome to the summer edition of Conservation News and isn't it wonderful to have the blue skies back for a while?

In this edition of the magazine, we've brought together all the best bits of summer, with gardening tips for warmer weather, home décor to help you take advantage of the summer months and fascinating articles for you to read while you relax in your deckchair.

One such article is about the restoration of the Cherville Oast House: a gorgeous 18th century construction that's been sympathetically restored and renovated into an incredible living space – we hope you love it as much as we do.

Speaking of living spaces, we have a great article about bedroom décor, plus editorials that showcase some of Kent's finest interiors and furniture businesses, as well as a brief look at the history of railings, which has proved to be remarkably interesting.

*Dawn & Nadene*



**CONSERVATION NEWS**  
conservationnews.co.uk

*Publisher*  
Conservation News

*Contributors*  
Rowena Hawtin  
Susan Hubbard  
Tina Marshall  
Liz Norton  
Louise Tomlin

*Design*  
Dandelion Design

*Editor/Sales*  
Dawn Long

*Sales Manager*  
Nadene Weed  
Tel: 07515 157795

*Cover:* Walton & Co.  
© Conservation News 2022

Printed in the UK by Pensord



If you receive your copy of Conservation News by Royal Mail and wish to opt out of our mailing, please send an email to [dawn@conservationnews.co.uk](mailto:dawn@conservationnews.co.uk)

All rights reserved.  
Reproduction of any part of this magazine is not permitted without written permission of the publisher.

The publisher accepts no responsibility of any loss or damage in respect of any product or service that may be advertised.



FAIRFAX GALLERY



'Summer Lake' Oil on Canvas 100 x 120cm



'Captain's Wood' Acrylic & Enamel on Canvas 80 x 120cm

Over 100 original contemporary paintings and sculpture by established, award-winning and emerging artists. We also offer a home trial service to enable clients to view artworks in situ.

23 The Pantiles, (Lower Walk), Tunbridge Wells  
[www.fairfaxgallery.com](http://www.fairfaxgallery.com) (Est. 1995) Tel: 01892 525525





# Contents



8 **Summer gardening**  
What to do in the garden now

11 **Healing gardens**  
The power of plants

19 **Setting boundaries**  
The lowdown on railings,  
fences and walls

28 **Creating your  
perfect bedroom**  
Tips and advice

39 **Under foot**  
Using rugs to transform  
any room

52 **Lifestyle**  
Inspiring ideas for your  
home and garden

70 **Beautiful, beguiling and  
bewitching**  
Welcome to Boys Hall!

88 **Recipes (win the book!)**  
Two great recipes from  
The Seasonal Baker

92 **Local markets**  
Support your local  
farmers' market

96 **Rowena's wine column**  
Rowena visits Champion  
Wines in Chislehurst





## WATER WAYS

If you have water lilies in your pond they should be flowering soon. Each flower only lasts a few days, so as soon as blooms start to fade it's a good idea to snip them off along with any unhealthy or yellow leaves. This will help keep your pond water clean. Other submerged oxygenating plants will be taking advantage of the sunshine and growing quickly, so it's essential to thin them out. Remember to leave the trimmings at the side of the pond so any tiny aquatic creatures can slip back into the water.

# Garden NOTES



It's now the season of sweet peas, soft fruit and bedding plants. This is such a wonderful time in the garden, with flowers in full bloom and plenty of harvesting in the vegetable patch to be done.



## Delphinium festival

A celebration of the fabulous Delphinium collection in the Walled Garden at Godinton House in Ashford will be taking place from 11th to 26th June. The Delphinium Society members will be on hand to offer expert advice and have delphiniums for sale 1pm until 4pm. For more information and to book tickets please visit [godintonhouse.co.uk](http://godintonhouse.co.uk).



## Ideas for containers

New or old terracotta pots always look lovely, as do glazed pots within a modern garden. Newer materials such as aluminium also help to create a contemporary atmosphere. Recycling containers or converting old junk into new planters needn't mean an unsightly display. Galvanised buckets, wheelbarrows, watering cans, cauldrons and other old kitchen receptacles look superb. Glazed sinks can be used along with other weird and wacky items can be used to create a very personal container. A mixture of material types, shapes and sizes will suit most gardeners, though others may prefer identical pots.





## PLANT COURGETTES

If you sowed courgette seeds earlier in spring, they should be ready for planting now. Courgettes are greedy plants, requiring plenty of water and nutrient-rich soil. They are also space-hoggers, which, if given the chance, will romp across the plot. Courgettes can be harvested when they reach around 10cm; if left longer, the flavour will have begun to fade. Cut the thick stem with a knife. There is nothing like the taste of fresh courgette, sliced and fried in butter, and the flowers are a real delicacy.

## PRUNE SOFT FRUITS

Raspberries, redcurrants, gooseberries, blackcurrants, tayberries and loganberries are exceptionally tasty, but if you want more and bigger fruit next year it's worth doing some light pruning just as soon as they have finished cropping. Shorten the current season's side branches back to five leaves and cut back main branches by one third. You'll need to prune again in the winter. With loganberries, tayberries and summer-fruiting raspberries simply cut all the stems that fruited down to ground level to give space to new stems.



## What to do now

- Water is the key word in summer.
- Prune soft fruit to get bumper crops.
- Keep deadheading. This may be a tedious task but is very essential to help plants produce more flowers.
- Feed hungry shrubs and roses.
- Divide bamboo and water lilies.
- Stay on top of the weeds.
- Clear the grass from around trees.
- Sow biennials such as foxgloves, sweet william, wallflowers and forget-me-nots.
- Sow late summer and winter crops such as cabbages, carrots, cauliflowers and lettuces.
- Refresh bird baths and top up ponds

## CONSIDER THE BEES

It's vital to attract bees in order to aid pollination of edibles. Many Mediterranean herbs produce concentrated sugary nectar in mid-summer. Sage and lavender are both excellent bee plants for a sunny position. Rosemary will flower early in the year, while oregano is also excellent, especially in August, as it attracts butterflies as well as bees. Or consider growing some annuals. It's not too late to sprinkle some pot marigold. Their bright orange flowers attract hoverflies and their predatory larvae clean up aphids and other small pests.





## Marchant Tree Care



07585 447172

info@marchanttrecare.co.uk  
www.marchanttrecare.co.uk

Tree removal  
Stump grinding  
Pruning  
Crown thinning  
Crown reduction  
Crown lifting  
Tree management  
Surveys  
Tree coppicing  
Hedge cutting

## KENT LEISURE BUILDINGS

Show site open 7 days



01959 534242

London Rd, Halstead, Kent TN14 7DY  
www.kentleisurebuildings.co.uk

## Mowtastic

Petrol garden machine sales & servicing

## Mowpower

Battery garden machine specialists

**Why wait 10  
weeks to get your  
mower serviced  
We do it in 5 days  
Free local delivery  
& collection**

**£249 inc. all  
service parts and  
labour \*\***

**Need your ride on  
Mower serviced  
We can do it  
In 5 days**



**Call 01622 828 627 and tell us  
the make and model and we  
will book a date and time for  
collection & return it in 5 days  
Ready to Mow.**

**Come to our showroom & workshop  
Unit 6a/b Harrietsham Industrial Est.  
Station Road. Harrietsham ME17 1JA  
Please tell your family and friends**

**\*\* Price includes service parts & labour not belts, broken parts or cables etc.**



# Healing gardens

Words: Tina Marshall



GARDENING IS KNOWN TO BE HUGE BENEFICIAL TO OUR PHYSICAL AND MENTAL WELLBEING. IT CONNECTS US TO NATURE, GETS US OUT IN THE FRESH AIR AND IS OFTEN A WELCOME ESCAPE FROM DAILY STRESSES.



A beautifully planted herbaceous border never fails to lift spirits, and many gardeners enjoy growing fruit and vegetables to nourish both body and soul. But it's possible to tap even further into the healing power of plants by growing herbs and using them to create your own natural remedies.

For centuries, herbs have been used to treat a range of conditions and ailments, and many herbs still form the basis of some of the medications that you might buy from your chemist today. Aspirin, extracted from the bark of the willow tree, was first used to alleviate pain by the Ancient Egyptians, who chewed pieces of willow bark. Morphine was first extracted from the opium poppy in the early 19th century and was used for its pain-relieving properties. There are many simple ways to release the powerful healing properties of herbs, and by growing just a few varieties at home you can effectively create your own apothecary cabinet.

Pot-grown herbs are usually available from your local garden centre or nursery, and most varieties are easy to raise from seed. Herbs can be grown in beds and borders, raised beds, containers or even on a windowsill. They are low-maintenance plants, and thrive

in a warm, sunny, sheltered spot in well-drained soil. Where possible, site them close to the kitchen so they can be harvested easily when needed. It is advisable to plant mint and lemon balm in their own separate containers rather than in a shared container or directly in a border, as both grow prolifically and can take over a plot at the expense of other plants. The only routine care required when growing herbs is to remove any weeds and water regularly.

#### HERBAL TEA

One of the easiest ways to enjoy the many health benefits of herbs is to prepare a herbal tea, or tisane. These drinks are incredibly flavoursome, naturally caffeine-free, and may contain a range of vitamins, minerals and health-promoting antioxidants, depending on the herbs used. To prepare a tisane, pick a small





handful of fresh herbs, rinse and scrunch the leaves slightly to release their essential oils. If using dried herbs, a teaspoon of dried leaves, seeds or flowerheads is enough for one mug. Steep the herbs in freshly boiled, slightly cooled water, ideally in a teapot as the lid prevents the powerful essential oils being lost through evaporation. Leave to infuse for five minutes, strain and pour. Take time to appreciate the delicate fragrance and aroma of the tea – breaking away from a busy day for just a few minutes gives you an opportunity to reflect and regroup and enjoy a moment of mindfulness.

Herbs contain an abundance of vitamins and minerals and can be used to calm, revive or energise both body and mind. They are packed with health-promoting antioxidants that fight the damaging free radicals found in our bodies, and they are believed to be hugely beneficial to our health in many other ways too.



## DRIED HERBS

Herbs can be dried to allow them to be stored for longer. Harvest the herbs, gently rinse and pat dry. Tie gently in a bunch and hang upside-down in a warm, well-ventilated spot out of direct sunlight. When the herbs appear dry and crispy, they are ready to be stored in an air-tight container and kept in a cool, dry, dark place. Dried herbs are usually three or four times stronger than fresh herbs, so when using them in a recipe adjust quantities accordingly.



*Here are some of the most versatile and widely-used herbs, all of which are incredibly easy to grow at home and make delicious herbal teas:*

## MINT

Mint has been used for centuries to soothe an upset stomach and ease indigestion. It is also said to relieve congestion from a cold and can reduce feelings of nausea. Its invigorating menthol aroma is wonderfully uplifting, making it the perfect tonic if you need to feel energised.

## LEMON VERBENA

Said to calm body and mind, lemon verbena makes a delicate, lemon-flavoured tea best enjoyed at bedtime. Its relaxing qualities are also said to soothe stomach cramps and menstrual pains.

## ROSEMARY

Said to invigorate, energise and even improve concentration and memory, rosemary is also believed to aid digestion and relieve gas and bloating.



## LEMON BALM

Known for its relaxing, calming properties and used to treat anxiety and restlessness, it's said to promote healthy and restful sleep. Can also be used to ease pain including headaches and menstrual cramps.

## FENNEL

Fennel is said to soothe digestive problems such as an upset stomach, bloating and trapped wind. It's another one said to relieve menstrual cramps.

## SAGE

Said to provide comfort from hot flushes and night sweats, this may be beneficial for women going through the menopause.

## CHAMOMILE

Believed to promote restful sleep and ease anxiety, it can also be used to treat digestive issues such as cramps and indigestion.



With summer here and temperatures rising, why not get creative and make a cooling, herbal infusion to drink and enjoy? Add a handful of fresh herbs to a jug of water and flavour with slices of fruit, cucumber or edible flowers. Place the jug in the fridge and enjoy throughout the day. Mint leaves and cucumber slices added to chilled water make a wonderfully refreshing summer drink. For a delicate but fruity flavour, pair lemon verbena leaves with strawberries, while for an invigorating pick-me-up, try a chilled rosemary infusion dressed with lemon slices. It is important to remember that herbal teas should be introduced slowly into your diet to minimise the impact of any adverse side-effects. If you suffer from a specific medical condition, be sure to seek medical advice before including herbal teas in your diet, and always speak to a medical professional about any specific health concerns. If you are pregnant, you should not drink herbal tea without your doctor's consent.



# Welcome to Coblands Garden Centre

With summer days around the corner, now is the time to enjoy your garden.

In peak summer we see spires of Lupins, Digitalis, Delphiniums and the scent of summer Roses and herbs.

Enjoy your harvest of fruit and vegetables, then sit back, relax and enjoy the fruits of your labour.



**A Royal favourite  
climbing shrub or  
mini Roses**



**UK grown cottage  
garden Perennials**

  
**COBLANDS**  
GARDEN CENTRE  
Helping gardeners since 1963



[coblandsgardencentre.co.uk](http://coblandsgardencentre.co.uk)

Dryhill Lane, Sundridge, Sevenoaks, Kent TN14 6AA Tel: 01959 561274

All prices correct at time of going to press. While stocks last.

## Constructed and resurfaced in Kent, Sussex and Surrey



Please call Martin  
for free advice  
and quotations

Tel: 01424 892265  
07831 643835

[www.martingurr.co.uk](http://www.martingurr.co.uk)





# Stanbridge Surfacing

## Driveway Specialists



- Resin bound & bonded • Hot bitumen & gravel
- Groundworks • Tarmacadam
- Dropped kerbs & crossovers • Block paving

Tel: 01892 652700 Mobile: 07506 968221  
[stanbridgesurfacing.co.uk](http://stanbridgesurfacing.co.uk) | [info@stanbridgesurfacing.co.uk](mailto:info@stanbridgesurfacing.co.uk)

Find us on  
**Checkatrade.com**

## STONE • BRICK • STUCCO • MASONRY

### CLEANING AND RESTORATION

Prelude Stone is a family-owned local company of craftsmen with over 35 years' expertise working in the stone, brick, stucco and all related materials across all building types - especially residential properties from terraces to townhouses, country cottages to listed buildings.

We are happy to receive enquiries by email, together with photographs,  
to [office@preludestone.co.uk](mailto:office@preludestone.co.uk)



Unit 2, Westerham Trade Centre,  
Flyers Way, London Road,  
Westerham TN16 1DE  
[www.preludestone.co.uk](http://www.preludestone.co.uk)  
Tel: 01959 580360





[www.theshedfactory.co.uk](http://www.theshedfactory.co.uk)  
01732 823455

## Artificial grass at trade prices at Gorse Hill Nursery

**No mowing! No feeding! No watering!**

WE ALSO SUPPLY REAL TURF & TOP SOIL

Our quality artificial grass starts at  
£12 per sq metre inc. VAT.

Free DIY advice or call for a free  
no obligation quote. We sell all you  
need to complete your project.

**TRADE ENQUIRIES WELCOME**



Samples available on request

Gorse Hill, Farningham DA4 0JU (opposite Scratchers Lane)  
Tel 01322 864704 or 07984 475519 | [www.gorsehillnursery.co.uk](http://www.gorsehillnursery.co.uk)

# metalworks

*Design, Engineering, Fabrication & Installation*



**CUSTOMER  
SATISFACTION  
GUARANTEED**



## **WE OFFER EXPERTISE IN:**

- MASTERLY CRAFTED HEAVY DUTY GATES  
AUTOMATIC OR MANUAL INCLUDING FULL  
AUTOMATION AND ENTRY SYSTEMS
- PEDESTRIAN AND ACCESS GATES
- RAILINGS & BALCONIES
- STRUCTURAL STAIRCASES AND MUCH MORE!

**TRUSTED FOR MORE THAN  
20 YEARS OF QUALITY FABRICATION**



**CONTACT US FOR A FREE ESTIMATE**

**VISIT US ONLINE: [WWW.METALWORKS-UK.COM](http://WWW.METALWORKS-UK.COM)**

**TEL: 01322 838150 EMAIL: [METALWORKS-UK@HOTMAIL.COM](mailto:METALWORKS-UK@HOTMAIL.COM)**



# SETTING BOUNDARIES

We all have some sort of boundary around our properties and we all know that these boundaries play a major role in the safety and aesthetics of our homes.

While they can, on occasion, cause strife between neighbours, these boundaries are more often a point of pride: A smart wooden fence that neighbours on either side are happy to maintain, or a sturdy iron railing that speaks to a property's history. As for the history of these personal boundaries, it's actually quite a fascinating one...

## Ancient boundaries

The word fence comes from a 14th century word 'fens' meaning defence or protection, however fences themselves predate this by some considerable way, and were intended to not only defend property, but also to denote it.

People as far back as the Bronze Age used boundary walls to mark their property and to enclose livestock.

The ancient Greeks were disinclined to use boundaries within their own cities (in Athens property was a matter of social recognition), but were keen to create physical markings of ownership in the states and countries they conquered.



Photo: Metalworks

The Romans of course continued this practice (Hadrian being a big proponent of the trend!), and Medieval landowners were equally keen to mark their territory often using that English staple – the hedgerow – which was introduced sometime in the Saxon period.

## Private boundaries

Using fencing or railings around one's own home is a slightly later practice, but one that really came into its own in the 15th century, with the invention of wrought iron railings. Although initially used practically rather than decoratively, these railings had their heyday in the Victorian period, when elaborate craftsmanship and a love of all things ornate made them a firm favourite, particularly throughout London and other major cities.

During the war, many iron railings were melted down supposedly to be 'used in the war effort', but this movement was in fact more about morale boosting as the iron could rarely be reused and was often simply dumped at sea!



Unfortunately wrought iron is no longer manufactured, and so railings these days must be recycled or restored, and other methods, such as cast iron, are more commonly found.

## Modern boundaries

So if you have wrought iron railings then consider yourself very lucky and learn how to properly maintain them using paint or





## Brick walls

Brick walls are a popular choice for many homeowners. Depending on the type of brick and the size of the wall, a brick wall can cost anywhere from £8 to £40 per square foot depending on the layering and quality.

Brick walls are much more durable and stronger than fences and can last for decades with little to no maintenance.

Additionally, brick walls can withstand severe weather conditions. If you live in a windy area or frequently experience storms, a brick wall may be the better option for you. They also have a classic and timeless look that can enhance the curb appeal of your home and are available in a variety of colours and styles to match any home. You can also paint a brick wall to suit your style.





## The ha-ha

One style of boundary that is often overlooked is the ha-ha: a type of sunken fence or wall that become popular in Georgian country homes thanks to their obsession with all things naturalistic and Arcadian. These are an excellent idea if you have a garden worth showing (and if you're friendly with your neighbours!), but have an obvious disadvantage in terms of security. However, they can be used to mark boundaries within your own property, for example between a main lawn and a wild area.

other sealants. If not, there are myriad types of fencing that can bring new life to your boundaries.

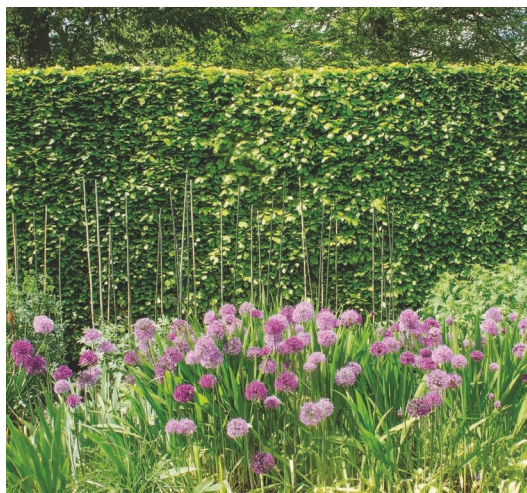
During the Regency period the use of wooden fencing, previously only utilised by poorer households, became *de rigueur* for higher end properties, thanks to a desire to present one's home as 'quaint' or rustic. These wooden fences are of course still popular because they are cost effective, attractive and fairly easy to maintain.

One of the best things about wooden fencing is that there is so much choice available, from simple white pickets that mimic the American suburban ideal, to rough cut, naturalistic fences that speak to the pastoral aesthetic.

If you're interested in wooden fencing it should be noted that not all fencing was created equal and it's worth going to a reputable fencing company to avoid heartache (and hurricane casualties) down the line.

As for other types of boundary, quite frankly anything goes. From mighty stone edifices to simple plant hedges, there are so many ways to mark your property in an attractive and sympathetic manner, that there will always be something to suit your style and budget.

However, whatever you choose to do with your fencing, make sure you do it well. Boundaries are too often a neglected part of our homes and yet they make an enormous amount of difference to the overall appearance of our properties. So take a tip from our ancestors and create a boundary to be reckoned with.







## Living walls

As well as adding a personal, unique touch to your space, this planting style can fit in nearly anywhere. Whatever type of garden ideas you have – from a small courtyard to large lawn, living walls will make the most of your space. They can be planted with annuals, perennials, herbs or vegetables, providing a welcome splash of colour.



I wish I'd ordered the  
Heating Oil . . .

Emergency deliveries available

Family owned & operated

Call for excellent prices



Tel 01622-962599



## Call us for all your waste needs Fully licensed - FREE quotations

- Household
- Garden waste
- Builders
- Contract work
- Site clearance
- Commercial
- Demolition

**"No need to skip it...  
let us load and tip it!"**

**NEW  
SERVICE**  
Asbestos  
removal

Out of hours & weekend collections

T: 01732 823511 Mob: 07803 854424 E: [info@first4waste.com](mailto:info@first4waste.com)

[quickquotes@first4waste.com](mailto:quickquotes@first4waste.com)

[www.first4waste.com](http://www.first4waste.com)

**First4Waste**

We aim to recycle as much of our waste as possible to keep the world greener





**LAM**  
Liquid Applied Membranes Limited.

## FLAT ROOFING SPECIALISTS

Longer life and less maintenance than traditional mineral felt and asphalt flat roofs. LAM's liquid applied flat roofing is highly cost-effective and comes with a 25-year guarantee!

### LIQUID APPLIED ROOFING SYSTEMS

- Over 30 years experience
- Cold Applied - no flame or hot works
- Fast, efficient installation service with no mess and minimal disruption
- Totally seamless – tough and durable
- UV stable and colour options available.

**T: 01892 825768**

E: [info@liquidapplied.co.uk](mailto:info@liquidapplied.co.uk)  
[www.liquidapplied.co.uk](http://www.liquidapplied.co.uk)



# CHALK DOWN LIME

The Lime Yard, TN32 5BP | [chalkdownlime.com](http://chalkdownlime.com) | 01580 830062

## GENERAL REPAIRS

## PAINTING & DECORATING

## FLOORING

## FENCING & DECKING

## POWER WASHING

FREE quotes

01474 707950

07960 876685



**M MATTHEWS CARPENTRY** Property & Maintenance Services

Floors  
Doors  
Windows  
etc.

Taking care of all your carpentry, joinery & property maintenance needs

Highly skilled craftsman • 14 years experience

No job too big or too small

[mmatthewscarpentry@yahoo.co.uk](mailto:mmatthewscarpentry@yahoo.co.uk)



**MADE-TO-MEASURE, NOT ADAPTED TO FIT**

• Offices • Bedrooms • Living rooms



**Over 40 years experience • 5 Year Guarantee**

• FULLY CARCASSED • FREE QUOTATION • SHOWROOM WITH FREE PARKING

01474 874487 [www.gpmdesigns.co.uk](http://www.gpmdesigns.co.uk) [enquiries@gpmdesigns.co.uk](mailto:enquiries@gpmdesigns.co.uk)

Open Monday to Friday 9:30am to 4pm. Saturday 10am – 4pm.

Unit 5b Beechcroft Farm Industries, Chapel Wood Road, Ash, TN15 7HX



## the Anthony Saward Gallery

Original artwork  
available by local Kent  
artist Cathy McClymont



- Bespoke framing • Wide choice of Mouldings & Swept Frames
- Over 30 years experience • Friendly reliable service

4 Medway Street, Maidstone ME14 1JS 01622 676926

[www.sawardgallery.co.uk](http://www.sawardgallery.co.uk)

- WE OFFER:**
- **FREE DELIVERY** on all items
  - **DISPOSAL** of your old bed/mattress
  - **HUGE STOCK FOR IMMEDIATE DELIVERY**
  - **EXCEPTIONAL CUSTOMER SERVICE**  
from our friendly & knowledgeable staff



*For the **rest** of your life!*

**SUMMER  
SALE**  
NOW ON

Head instore or online to browse our summer sale  
[www.the-bedpost.co.uk](http://www.the-bedpost.co.uk)



**CRAYFORD**  
DA1 4LB  
01322 525090

**PETTS WOOD**  
BR5 1DQ  
01689 830964

**NEW STORE!**

**REIGATE**  
RH2 OAJ  
01737 948345

**SEVENOAKS**  
TN13 2UT  
01732 742000

**SIDCUP**  
DA14 6NF  
020 8309 6016

**BEDS | MATTRESSES | BEDROOM FURNITURE | [www.the-bedpost.co.uk](http://www.the-bedpost.co.uk)**

# Creating your perfect bedroom

If you ask a medical professional for the top three areas vital to healthy living they will always tell you: diet, exercise and sleep. However, while we all know how important it is to eat healthily and stay active, an alarming number of adults aren't getting enough good quality sleep.

There are plenty of tips to help you with your 'sleep hygiene' from staying away from technology before bed, to taking a calming bath at night, but one thing that's very important to your quality of sleep is your environment. We've put together five top tips for creating the ultimate oasis of calm with your bedroom décor.

**1 MAKE THE MOST OF SPACE**  
Clutter is an absolute no-no in a bedroom, so make sure your decor is minimal if you want to be able to relax. If you have a small room then use as little furniture as possible and make sure that there's plenty of room to move around. You should be able to get easily around three sides of the bed as this not only creates a sense of space, but also makes changing the sheets a whole lot easier. Consider fitted wardrobes



*The French Bedroom Company*



to hide away any necessary clutter (take a look through our advertisers to find the perfect professional for the job) and remove anything from the room that doesn't absolutely have to be there.

## 2 MAKE SURE FURNITURE IS APPROPRIATE

Dark, substantial antique furniture can be absolutely beautiful, but if your room is small or has small windows, then it will look heavy and oppressive. Consider pine or similar to brighten up the room or, if you do have a larger room, choose one dark piece (such as a bed) as a centrepiece. Use wall art or a tall headboard to draw the eye upwards and use mirrors to catch and spread the light.

## 3 ADD COLOUR WITH CAUTION

Your bedroom should be soothing and natural: that's why spas often use pale and natural tones such as cream and beige. However, that doesn't mean you have to drown the room in magnolia! Pick a pale base colour and then accent it with something a little stronger. Think beige with warm brown, cream with leafy green or even white with a rich navy. The important thing is to add your stronger colour sparingly. A bedroom that's predominantly white could take dark blue curtains at one end of the room, with a skyscape or similar painting at the other end to create a night sky or 'grown up' space theme. Cream walls and light furniture can be given warmth with green bedding and lampshades. The best thing about keeping your coloured



accents minimal is that they can be easily changed when you get bored, or even swapped out temporarily at Christmas for, say, red and gold.

## 4 SOFTLY SOFTLY

Bedroom furniture tends to be overtly functional and, as such, will usually be wooden and therefore hard. Whereas in a living room you can soften the décor with a nice plump sofa, in a bedroom you'll need to add those soft touches very deliberately. Your bed of course is the main 'soft focus' of the room, and a plush throw or extra cushions will take you from budget hotel to sumptuous boudoir in no time! A faux fur rug will carry through that softness and, if you've the space, a small upholstered chair can make a gorgeous addition.

## 5 LIGHT UP YOUR ROOM

The amount and type of light in your bedroom is vital to your sleep hygiene. Ideally you should be lulled to sleep with cosy, warm lights at night, and be able to let the morning sun stream in to wake you up. You can't

do much about the size of your windows or the direction your house faces, but by using colour and mirrors, as mentioned earlier, you can make the most of mornings – even adding a daylight bulb or lamp to beat the winter blues. In the evening however, you're in full control. Use warm light bulbs and wall lights or lamps, rather than overhead lights to create a peaceful ambience. Consider candles or even some carefully placed twig lights for a fantasy feel.

#### LAST BUT NOT LEAST

Those are our top five tips, but there's one thing that's more important than any décor advice we can give you, and that's the bed itself. Your bed can lend itself to every one of the tips above:

- Underbed storage is a life saver in small rooms
- A light frame will make a small room look bigger, while a heavy frame creates a focal point
- A striking headboard could be just the splash of colour you need

- Your mattress should be just the right softness to give you the best possible night's sleep
- The type of bed and mattress you choose will do more for the ambience of the room than lighting ever could.

We researched long-established mattress company Harrison Spinks and discovered the following:

It's vital that your bed be tailored to the comfort of you and your partner, year round. Many mattresses now have a dual option (for couples who like different tensions) and some high quality ones even have seasonal turning options, where one side of the mattress is cooler and one is warmer. Harrison Spinks offer no turn options, for people who are mobility impaired, and they use all natural materials so that there are no unwanted chemicals to interrupt your body's rhythms.

A good night's sleep is essential to your overall wellbeing, and we hope that these tips will help you catch up on your zzzs.







*Great British Kitchens*



*The Designer Bed Company*

Atlantic 3 + 2 chest of drawers,  
£895, London Road Furniture



Cushion, £22  
lenleys.co.uk

Kaymed 'Inner Wisdom'  
4ft 6in double divan set.  
Was £1629.99, Now  
£1099.99 (Headboard extra)  
the-bedpost.co.uk



Cushion, £24  
lenleys.co.uk



Vanity mirror, from £122  
scandinaviantouch.co.uk



Halo basket storage, £180  
scandinaviantouch.co.uk



Pooky Satre Table Lamp,  
£116, Shade, £123  
oohhowlovely.co.uk

# Get the look

## INSPIRING IDEAS FOR YOUR BEDROOM



Kip & Co Flower Fairies Make A Wish Cotton  
Pillowcase, £25, antipodream.co.uk



Flynn mirrors, £79  
lukehurst.co.uk



Ercol Terramo bedsid cabinet,  
£329, lukehurst.co.uk




Moreno bedstead, £1,879,  
lukehurst.co.uk



Montague storage box, £555  
neptune.com





Some furniture is made for the here and now.  
Some is built to stand the test of time.  
At Neptune, we believe that the best can do both.

**Good design never grows old.**

NEPTUNE

Tonbridge, 01732 351866  
[neptune.com](http://neptune.com)



# MAISIE K



*Maisie K is a unique lifestyle store offering the very best in the latest fashion trends, fashion accessories and luxury home decor and furniture.*

23 Stone Street, Cranbrook TN17 3HF | Tel: 01580 715123  
[www.maisiekshop.com](http://www.maisiekshop.com)





**LENLEYS**  
HOME

Enjoy a breath of fresh air  
in our **summer sale**



**SUMMER SALE INSTORE AND ONLINE**

**VISIT OUR NEW MAIDSTONE STORE**



**Lenleys.co.uk**

**MAIDSTONE NEW STORE** / 01622 753 073 / Sandling Road, ME14 2RF  
**CANTERBURY** / 01227 766 655 / Roper Road, Canterbury, CT2 7EL





*Ooh How Lovely*

**Our own range of**  
**Mineral Paints**  
**Bespoke curtain & blinds**  
**Upholstery & Lighting**  
**Colour scheming**  
**Wallpaper & fabric**  
**Gifts & cards**

**Call us on**  
**01580 848303 / 07400 522081**

**Tuesday, Thursday, Friday &**  
**Saturday**  
**10am – 5pm**

**The Corner Shop**  
**High Street, Hawkhurst**  
**TN18 4AD**



**[www.oohhowlovely.co.uk](http://www.oohhowlovely.co.uk)**

# Ooh how colourful!

Hawkhurst's most colourful shop. Ooh How Lovely, is launching a veritable rainbow this summer, with their very own line of bespoke paints.

The popular interiors and gift shop, situated at the crossroads in Hawkhurst, turns three years old this year and is releasing the 'Anniversary' collection as a celebration of friends, family and craftsmen and customers who have been involved with the shop's development in the last couple of years. Owner Lisa remarks "The paints are being created in collaboration with a local small batch paint company based in Sussex. To create the range, I asked our friends, family, craftsmen and customers to tell us their favourite colour and I then gave them a name that suited the person/colour. I have always wanted to create an *Ooh How Lovely* paint collection and collaborating with Simon has meant this is possible. It's also a fantastic way for us to create something unique and a thank you to the lovely people involved in my business"

It's clear that the paints are going to be popular, as pre-orders were being taken as soon as the colours were announced:

"We have 24 colours in the range and they're already in demand. A lovely client of ours, for whom I colour sanded the whole house, has chosen Bring me Sunshine (a rich yellow) and Leafy Meadow (a sumptuous green) to brighten up their new build, which is currently various shades of grey as new builds tend to be! They are very excited to start their refurbishment and we cannot wait to see what the colours look like in a 'real world' setting!"

The paints are high quality featuring ingredients including Sussex chalk, alabaster,



and linseed oil to allow for smooth application and a soft, matt finish, and are suitable for walls, furniture, and metals, making them extremely versatile. The original idea was to create a limited-edition line, but the buzz around the colours is such that Lisa is considering making them a permanent addition to the shop.

However, whether you're looking at repainting, or simply want to brighten up your home, Ooh How Lovely is well worth a visit. An eclectic mix of blinds and curtains, lamp shades and bases, upholstery fabric and wallpaper plus an interior colour scheming service; and even a selection of chic cards and gifts, this is a shop that's perfect for people with an eye for interiors and is sure to brighten up any shopping trip!

# THE STONE TILE WAREHOUSE

ACORN YARD, SUTTON ROAD, LANGLEY, KENT, ME17 3ND

**01622 679157**



**NATURAL STONE, PATIOS, PORCELAINS, CERAMICS AND MOSAICS**  
KITCHEN AND BATHROOM RANGES ON DISPLAY

**NATURAL STONE SPECIALISTS**  
OUR COMPREHENSIVE RANGE OF  
WALL AND FLOOR TILES ARE  
ESPECIALLY SOURCED TO OFFER  
**EXCEPTIONAL VALUE**



**GARDEN, PATIO AND OUTDOOR TILES - SUPERB**  
RANGE OF **PORCELAIN AND OUTDOOR STONE**  
AVAILABLE TO VIEW IN OUR EXTERNAL DISPLAY  
AREAS AT THE SHOWROOM

**OPEN TO THE PUBLIC AND TRADE**

**MON - FRI 07:30 - 17:00**

**SAT 09:00 - 16:00**

**EXPERT ADVICE, INSTALLATION & CUTTING SERVICE AVAILABLE**

INFO@THESTONETILEWAREHOUSE.CO.UK



WWW.THESTONETILEWAREHOUSE.CO.UK



# UNDER FOOT

using rugs to transform a room



Persian runner, £5,400, [lillarrugs.com](http://lillarrugs.com)

Nothing transforms a room like a great rug. A good rug defines a room and adds an extra layer. It can complete a room visually, making it more exciting, warm, cosy, and comfortable. They can be a game changer on how a room looks and feels.

### VISUAL PATHWAYS

Hallways can have the tendency to be dead, unwelcoming spaces. So what better way to liven them up than with a rug. They can create a visual pathway that draws the eye to any connecting rooms. This means you can have fun and introduce pattern and colour with your chosen rug. Although, you'll need to consider how your scheme flows into connecting rooms.

### CONNECT SPACES

By placing similar style/coloured rugs in connecting spaces, you unify and create a visual connection between the two rooms. This, in turn, makes each room flow from one to the next as your eye is drawn from one space to the next. This works particularly well in neutral and/or minimal spaces.

### CREATE A FEATURE

Angling and layering rugs on top of one another can make for an interesting feature. If you're struggling to find a rug large enough for your space, opt for more by introducing the layered effect. It'll create greater impact than one large rug.

### AS ART

Rugs have become works of art in their own right and if you happen to come across one that's just too good to walk on, then maybe consider hanging it on your walls. They not only provide a decorative element but are also great for walls where you may need to a little bit of extra help in absorbing sound from adjoining rooms.



Hand Made Rugs, Rye, [www.handmaderugs.co.uk](http://www.handmaderugs.co.uk)



## REINFORCE YOUR DESIGN SCHEME

When choosing your rug look towards other elements of your design scheme, such as colour. If the rug you choose has an element of your design scheme, it will help reinforce, and create a more cohesive feel and look to your room.

## CHOOSE THE RIGHT SIZE

Whatever rug you decide to go for ensure you choose the largest rug you can for the room it will reside in. Avoid the floating rug in the centre of the room. Ideally, the rug you choose should be large enough to fit under all four legs of each piece of furniture. If this isn't possible the front legs of your furniture should be positioned on the rug. Apart from anchoring your furniture, it also helps prevent trips and falls. Your rug size should be based on the dimensions of your room and not your coffee table. Opting for a larger rug will fill the negative space created by your furniture.

## CONSIDER A DIFFERENT SHAPE

Why settle for the traditional rectangular rug shape? Choose the ideal shape depending on the space and the way your furniture is grouped. Then opt for an oval, round, or square shape if it complements the room better than a rectangular rug.



Top: Nomad Atlas rug, £169, [weavergreen.com](http://weavergreen.com).

Bottom Dutchbone round bug £389, [cuckooland.com](http://cuckooland.com)



## PLAY WITH COLOURS

The rug's colours should match your home's décor and mood. Ideally, the rug is chosen first, then the room is decorated around it. But if you already have the furniture in place, use the rug to tie the existing colours or add an accent. A rug in bold colours can be used as a centrepiece, whereas more neutral colours are great if you want the rug to blend in. In general, brighter and darker rugs are better suited for bigger rooms.

Along with natural flooring and carpet, rugs boasts many useful practical attributes. They are excellent insulators, cutting down on draughts and reducing heating bills. They soften footfall by absorbing noise and feel soft and comfortable underfoot. And, when it comes to style, they can add a whole layer of personality to a living room.



*Hand Made Rugs, Rye, [www.handmaderugs.co.uk](http://www.handmaderugs.co.uk)*



- ✓ Wood Floor Restoration
- ✓ Wood Floor Sanding & Oiling
- ✓ Wood Floor Installation


## Affordable Kent Wood Floor Restorations

Fully trained, qualified and affiliates of the ultimate floor sanding company  
If you're looking for a floor sanding expert, look no further!



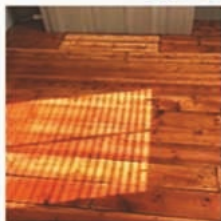
PRISTINE  
FLOORS LTD

01732 647064

Part of Rolin C S Ltd   
Family run business



OUR SERVICES OPERATE IN THE WHOLE OF KENT AND SURROUNDING AREAS



Email: [info@pristinefloorsltd.co.uk](mailto:info@pristinefloorsltd.co.uk) Website: [pristinefloorsltd.co.uk](http://pristinefloorsltd.co.uk)

Rye Showroom  
55 Cinque Ports Street  
Rye, TN31 7AN

HMR  
HAND MADE RUGS

Landgate Showroom  
By Appointment  
3 Landgate, Rye, TN31 7LH

With an ever-growing demand for custom-made, designed rugs and our collaborations with designers across the globe, we can create rugs in any design imaginable, alongside thousands of existing rugs to choose from.



Call: 01797 360353 | [rye@handmaderugs.co.uk](mailto:rye@handmaderugs.co.uk) | [www.handmaderugs.co.uk](http://www.handmaderugs.co.uk)





ORLESTONE OAK

KENT · ENGLAND



# Bespoke Flooring

LONG & WIDE · PRODUCED IN KENT · FINISHED BY HAND



JOINERY



OAK FRAMED BUILDINGS



DECKING



CLADDING

For more information on pricing or fitting, or to place an order

CALL **01233 732179** VISIT **[orlestoneoak.co.uk](http://orlestoneoak.co.uk)**





Uniquely amtico

 **dewitt**<sup>™</sup>  
FLOORING SPECIALISTS  
SINCE-1966

DEWITT RESIDENTIAL FLOORING LIMITED

PLEASE CONTACT US TO DISCUSS YOUR FLOORING REQUIREMENTS: 01622 858940

9 HIGH STREET, LENHAM, KENT. ME17 2QD | [WWW.DEWITTFLOORS.CO.UK](http://WWW.DEWITTFLOORS.CO.UK)

# LEADING THE WAY IN FLOORING



ENGINEERED WOOD, SOLID WOOD, LUXURY VINYL, CARPETS

New extensive design showroom - Open Mon to Fri 9am-5pm Sat 9am-4pm

35 High Street Seal, Sevenoaks TN15 0AN Tel: 01732 762074





— THE —  
**LONDON ROAD**  
FURNITURE COMPANY



*5000 sq ft of beautiful furniture and gifts over 3 floors*

[WWW.LONDONROADFURNITURE.CO.UK](http://WWW.LONDONROADFURNITURE.CO.UK)



THE LONDON ROAD FURNITURE COMPANY

LONDON ROAD, HALSTEAD,  
SEVENOAKS, KENT, TN14 7AA

OPEN 6 DAYS A WEEK (CLOSED WEDNESDAYS)

Tel 01959 533433



# ENCHANTING FABRICS

SOFAS & STUFF LAUNCH EXCITING NEW FABRIC COLLECTION IN COLLABORATION WITH THE ROYAL HORTICULTURAL SOCIETY (RHS)

In an exciting new partnership with the Royal Horticultural Society (RHS), Sofas & Stuff have just launched an enchanting new furnishing fabric collection at the RHS Chelsea Flower Show. RHS 22 takes its inspiration from botanical artists and garden designers from the 17th through to the 20th centuries, using the archives of the RHS Lindley Collections, which houses one of the world's finest collections of botanical drawings, paintings, and literature. The result is an elegant, intimate collection grounded in soft, natural tones, with rich pops of colour from the featured illustrated fruits and flowers, that will work across a wide range of interior design styles.

Three of the designs feature intricately

detailed sketches from renowned botanical illustrators, William Hooker (1779 – 1832), Lydia Penrose (1787 – 1842) and Lilian Snelling (1879 – 1972). In each of these, individual sketches, drawings and paintings have been collated and artfully composed to create flowing designs that reflect the range and skills of the original artists. They have been printed onto beautiful tactile fabrics in soft natural tones and are suitable for all upholstery and soft furnishing purposes.

A more graphical and geometric interpretation of the rich RHS archive is delivered in two elegant fabrics based on Knot Garden designs from the early 17th century. Once again, the designs are rooted in soft,



*Kentwell 3 Seater Sofa in RHS Collection Lydia Penrose Design, 100% Linen. £3,821*



neutral grounds on both linen and cotton mix fabrics, and are presented in six nature-inspired tones ranging from inky blue through a palette of soft greens through to warm ochre and brown.

The final fabric features a design from one of Britain's best-known horticulturalists and garden designers, Gertrude Jekyll (1843 – 1932). An enchanting original sketch by Jekyll of a floral and leafy spray has been reproduced and repeated, creating a tumbling design across the fabric which feels both fresh and timelessly romantic.

The fabrics can be used across any of Sofas & Stuff range of British handmade bespoke sofas, chairs, beds, footstools, and cushions or purchased as fabrics for curtains and blinds or other soft furnishing projects. The RHS 22 fabric

collection is available to purchase exclusively through Sofas & Stuff, both in store and online.

About the partnership and the collection, Andrew Cussins, Founder of Sofas & Stuff, says:

"It was a real honour to be given the opportunity to delve into the world-renowned horticultural archives of this great British charity to select drawings and designs I could rework to create the first official fabric collection in collaboration with this iconic heritage organisation. Our customers expect quality, diversity and richness in design, and we are certain that they will find it here in this beautiful new fabric range, which reflects our nation's rich horticultural history and how much gardening and plants continue to enrich our lives."

Sofas & Stuff's Kent showroom, just outside Tunbridge Wells, has friendly, expert design consultants on hand to help you choose the right sofa, chair or bed and fabric for your lifestyle. Whether you are inspired by timeless classic designs, updated for contemporary living, or are seeking the latest in interior trends, you are sure to find what you are hoping for among their extensive range of British bespoke, handmade furniture.

Why not visit their Tunbridge Wells showroom, with free on-site parking, and discuss your furniture needs over a complimentary cup of coffee or tea at The Estate Yard, Eridge, Nr Tunbridge Wells, Kent, TN3 0JR. You can call them directly on 01892 572309 or visit [www.sofasandstuff.com](http://www.sofasandstuff.com).

® *The Royal Horticultural Society. The Royal Horticultural Society and its logo, are trade marks of The Royal Horticultural Society (Registered Charity No 222879/SC038262) and used under licence from RHS Enterprises Limited.*

[www.sofasandstuff.com](http://www.sofasandstuff.com) | T: 0808 1783211



*Rothermere Chair in RHS Collection Gertrude Jekyll Linen Green, 100% Linen. £2,396*

# The Antique Oak Flooring Company

SPECIALISTS IN ANTIQUE AND RECLAIMED FLOORING



VIEWING BY APPOINTMENT

Willow Court Farm, Bilsington Road, Ruckinge, Ashford, Kent TN26 2PB

T: 01233 659508 M: 07733 263540 [www.antiqueoakflooring.com](http://www.antiqueoakflooring.com)





Alwinton 3 seater sofa in RHS 22 Collection William Hooker £4,086

TUNBRIDGE WELLS SHOWROOM  
The Estate Yard, Eridge, Nr Tunbridge Wells, Kent, TN3 9JR  
01892 572309 | [sofasandstuff.com/rhs](https://sofasandstuff.com/rhs)





Planter, £32  
dibor.co.uk



Clock, £38  
nineangels.co.uk

Jug, £70  
neptune.com



Velvet cushion, £169  
luxecology.co.uk



Bamboo planter, £79  
cultfurniture.com



Mug, £17  
thevillagegreenonline



Victorian tale cushion, £75  
juliabrendel.com



Pooky lamp, £104, shade,  
£63, oohhowlovely.co.uk



Sea throw, £104  
jjtextile.co.uk

# Lifestyle

## INSPIRING IDEAS FOR YOUR HOME



Eva vase, large, £75  
scandinavianatouch.co.uk



Whitstable print, £45  
beachhouseart.co.uk



Santorini daybed, £1,450  
coxandcox.co.uk



Two outdoor seat cushions,  
£20, habitat.co.uk



Picnic basket, £89.99, Dobbies



Emma Bridgewater bowl, £20  
daisypark.co.uk



Solar lights, £14.99  
lights4fun.co.uk



Picnic blanket, £135  
heating-and-plumbing.co.uk

Natural slate & rusted mild steel  
garden sculpture, from £45,  
Alex John Art Gallery,  
alexjohn.co.uk, 07999 786785



Deckchair, £175  
oliverbonas.com



Honey candle, £7.99  
tkmaxx.com



Fire bowl, £349  
beaumont.co.uk



Wooden trug, £26  
nationaltrust.org.uk



Salt and pepper set, £16  
habitat.co.uk



Melamine dinner set, £49  
procook.co.uk



Outdoor beanbag, £149  
joebrowns.co.uk

Tablecloth, £390  
velvetlinen.co.uk



Boho parasol,  
£304  
iamfy.co



Gardener's gloves,  
£16.95  
annabeljames.co.uk



Lantern candle holder,  
£35, johnlewis.com



Outdoor modular sofa,  
£1,200  
vivalagoon.com



Mason jar set, £58.99  
wayfair.co.uk



Garden basket, £55  
lolaandmawu.com

# FAIRFAX GALLERY

OFFERING A RELAXED ENVIRONMENT TO VIEW AND PURCHASE A HIGH STANDARD OF ORIGINAL CONTEMPORARY ART.

The Fairfax Gallery was established in 1995 on the Lower Walks of the Pantiles, Tunbridge Wells,

to exhibit contemporary art of a standard rarely seen out of London. The gallery holds over 100 original paintings and sculpture in stock by established, award-winning and emerging artists. Whilst the style and subject matter of the artworks vary, the gallery has a distinctive style which has gained it a loyal following.

Since its inception 27 years ago, the Fairfax Gallery has maintained a high standard of artists across its successful portfolio. Over one thousand prospective artists approach the gallery each year, meaning only a select handful make it onto the walls. The longevity and continued success of the gallery are attributable to these talented artists and our wonderful clients who enable the gallery to flourish to this day.

The Fairfax Gallery was a previous winner of 'Best Gallery' in Kent in the Muddy Stiletto Awards battling away stiff competition from other galleries, such as the Turner Gallery.

Though the Pantiles is home to the original Fairfax Gallery, some may recall the name also hung above a spacious gallery in Park Walk, Chelsea for seven years, before the decision was made to focus on overseas art fairs in Hong



*Fragile Sunset Oil on Panel 90 x 90cm*



Kong, Singapore and New York. In 2001 the gallery acquired a permanent space in Burnham Market, Norfolk, complete with a stunning sculpture garden.

The Fairfax Gallery has also been fortunate to represent artists at key moments of recognition in their careers. These comprise winners and finalists of the BP Portrait Award, including Mary Jane Ansell and Shaun Ferguson, also a former winner of the Discerning Eye New Discovery Prize, in addition to Barry Wilson winning a Saatchi Award.

The Fairfax Gallery showcases art, in its spacious period building on the Lower Walks of The Pantiles, offering clients a relaxed setting with a personable service built on many years of experience. The Fairfax also provides a special service to clients whereby artworks can be taken to their homes before purchase, so they can see paintings in situ, ensuring the art is a perfect fit

for their home or office.

From 11th June to 8th September, the Fairfax Gallery will be holding its Summer Exhibition featuring new paintings and sculpture from its most popular exhibitors, alongside some exciting emerging talents. Paintings will range from colourful abstracts, painterly landscapes, and contemporary figurative work alongside sculpture for the home and garden. The gallery will be delighted to help you find the perfect artwork whether you are a first-time buyer or an avid collector. All work is available to purchase, and new pieces will constantly be added throughout the show to ensure there is always something tempting to view.

**Fairfax Gallery**

**Open 7 days a week**

**23 The Pantiles (Lower Walks)**

**Tunbridge Wells TN2 5TD**

**[www.fairfaxgallery.com](http://www.fairfaxgallery.com) 01892 52 525**



*'A Passing Glimpse' Acrylic & Gold Leaf on  
Canvas 112 x 76cm'*



*Silks 2 ll Bronze 107 cms high x 62 x 24cm*



## Replace that old Conservatory Roof with Activ **Blue** Glass

The Revolutionary Self Cleaning Glass that keeps your conservatory **WARMER** in Winter and **COOLER** in the Summer.

Now with internal **HEAT REFLECTIVE GLASS**

## Stunning Bespoke Verandas

Transform your Patio or Decking area and enjoy your garden all year round. Decorative Brackets and Columns.



Rehau • Windows • Doors • Bifolds • Patios  
Coloured GRP Doors • Porches • Conservatories



For free advice and quotation, no pressure, no gimmicks,  
just the facts and the cost, call:

**01474 707007 01732 550054 07860 831791**

**Factory: 01622 752288**

**info@acornglassline.co.uk www.acornglassline.co.uk**

**Unit 3, Heronden Road, Parkwood Industrial Estate, Maidstone, Kent ME15 9YR**



# Ready to talk shutters?



HOME DESIGN VISITS • EXPERT ADVICE • UNRIVALLED PRODUCT QUALITY

[kentbespokeshutters.co.uk](http://kentbespokeshutters.co.uk) | Tel: 0800 634 9678



**KENTBESPOKESHUTTERS.**  
YOUR LOCAL SHUTTER SPECIALISTS



**FITTED  
IN TIME  
FOR SUMMER!**

**SPECIALISTS IN HIGH QUALITY  
ALUMINIUM & TIMBER WINDOWS AND DOORS**

**CALL TODAY FOR A FREE NO OBLIGATION QUOTATION**

**01959 565343**

**WWW.THEWINDOWSANCTUARY.COM**



**Revamp**  
Window Repair Services



Misted or broken sealed units. Hinges, handles, locks, letterboxes cat flaps and more.

If your windows are jammed, draughtly or whistling they can be cured.

We can repair uPVC and aluminium.

Casement, tilt turn and sliding double glazed windows and doors. In most cases we will be able to get your old double-glazed window or door working again at a fraction of the cost of replacements.

**FOR YOUR FREE QUOTE:**

**07463 176697 or 01474 815677**

**info@revampwindowrepairs.co.uk**

**www.revampwindowrepairs.co.uk**



# SCHMIDT

KITCHEN | LIVING | BEDROOMS and MORE



Book your FREE  
consultation today  
01732 755555  
or 01622 5889900

Schmidt was created over 80 years ago by a family of craftsmen who loved their job and their customers. We have drawn strength from their legacy to establish our status as Europe's leading brand for bespoke home living solutions with six factories in Germany and France.

Our showroom design specialists tailor-make your kitchen, then our complete installation service ensure an efficient, hassle-free fitting. With Schmidt, you don't have to wait until the next sale to enjoy unbeatable quality.

# SCHMIDT

KITCHEN | LIVING | BEDROOMS and MORE

[www.Schmidt-sevenoaks.com](http://www.Schmidt-sevenoaks.com)



[www.Schmidt-maidstone.com](http://www.Schmidt-maidstone.com)

## SEVENOAKS

14-18 London Road  
Sevenoaks TN13 1AJ  
Tel: 01732 755555

## MAIDSTONE

742-744 London Road  
Aylesford ME20 6BG  
Tel: 01622 589900

# Quality is worth the wait

We talk to John Grant, a master joiner and cabinet maker from Sevenoaks, who is one of an increasingly rare breed of true artists.

His work is shaped by over forty years' experience and an eye for detail that's truly breath-taking. He has a loyal following of repeat customers and a waiting list that averages around 12 months, so why have you never heard of him?

Well, one reason is that John rarely advertises. Other than a Facebook page ([www.facebook.com/Grants-of-Sevenoaks](https://www.facebook.com/Grants-of-Sevenoaks)) showcasing his latest creations, John's not a fan of 'talking himself up'. Luckily for him, his customers are more than happy to, and most of his work comes through word of mouth.

However, the other reason (and the reason John was happy to speak to Conservation News) is that there are certain misconceptions regarding handmade furniture. The majority of people see work of John's standard and automatically assume that it's out of their price range: "I have a lot of experience with wood and my standards are very high so of course I'm going to be more expensive than an 'off the peg' from a showroom, but you don't have to be a millionaire to afford bespoke furniture, and it saddens me that many people miss out on getting unique items because they think they can't afford it"

As a one man band, John's overheads are lower than many of his competitors and he is utterly transparent on cost.

"I do everything myself, from design and creation, to fitting and painting the furniture. If you're getting a complete room (say a kitchen) done then I outsource plumbing, electrics and

stonework to some trusted colleagues".

John takes a 10% deposit before starting the design work, but then quotes by the metre run meaning that he can allow for small adjustments along the way.

Of course John's work is far too in demand for him to be available for very small items, but he's happy to take on almost any job from a single bed or table, to a complete kitchen or bedroom; because they all allow him to showcase his extraordinary artistry, and his work really does speak for itself.

So before you dismiss custom-made furniture and settle for something that's 'almost' right, reach out to John and see if he can bring his unique craftsmanship into your home.

[www.grantsofsevenoaks.co.uk](http://www.grantsofsevenoaks.co.uk)









## REDEFINING LUXURY, SINCE 1947

Potts have been creating luxury kitchens and bathrooms for over 70 years. Visit us at our showroom in East Malling to see the latest ranges from leading suppliers including Duravit, Villeroy & Boch, Marque IV, Ewe and many more.

01732 848444 • [potts.ltd.uk](http://potts.ltd.uk)

# POTTS

KITCHENS | BATHROOMS



# Be Inspired



*Grants*  
*of Sevenoaks*

Bespoke handmade kitchens, bedrooms, studies & free-standing furniture

**VISIT MY WORKSHOP**

Unit 3 Chart Farm, Seal Chart TN15 0ES Sevenoaks

**Call 07809 504251**

Facebook - [grantsofsevenoaks](#)

A stylish & modern kitchen designed to suit you



*Dare to be different*

Court Lodge Farm, Bishopsbourne, CT4 5HR | Phone: 01227 831663  
Email: [info@hogwoodhouse.co.uk](mailto:info@hogwoodhouse.co.uk) | [www.hogwoodhouse.co.uk](http://www.hogwoodhouse.co.uk)



## Aviva Stone, Granite and Quartz worktops

LARGE SHOWROOM NOW OPEN

Granite

Quartz

Marble

Slate



### FIRE HEARTH MADE TO ORDER

Court Lodge Farm,  
Frog Lane,  
Bishopsbourne,  
Canterbury CT4 5HR

Tel 01227 678007

or 07976 893646

[avivastonegranite@gmail.com](mailto:avivastonegranite@gmail.com)

**Aviva Stone**  
South East Ltd  
GRANITE & QUARTZ WORKTOPS

[www.avivastonegranite.co.uk](http://www.avivastonegranite.co.uk)



INTERIOR & EXTERIOR PAINTING AND  
DECORATING SPECIALISTS



CALL TINA FOR A FREE QUOTATION ON

**01474 832292**

**07831 712912**

**WWW.PURFECT-PAINTING.CO.UK**  
COVID-19 AWARE. WE ARE WORKING SAFE IN HOMES

## BP & H Baldwin Plumbing & Heating

Established 1969

info@baldwinplumbingandheating

Baldwinplumbingandheating.com

Tel: 07740 949452

- Plumbing
- Heating
- Hot water cylinders
- Boilers (accredited Viessmann fitters)
- Gas
- Bathrooms & kitchens supplied and fitted
- Power flushing
- Fully insured



Supply & installation of wood stoves, gas fires and  
surrounds and supplier for Everhot electric range cookers



VISIT OUR SHOWROOM – ADENA FIRES & STOVES

Open Monday to Saturday: 9.00am to 4.00pm

191 Vale Road, Tonbridge, TN9 1ST | 01732 353844

www.adenafires.co.uk





# MICHAEL HARRIS

ASSOCIATES

## Architecture • Historic building surveying • Heritage consultancy

**MICHAEL HARRIS ASSOCIATES** have extensive experience in historical building evaluations; condition surveys, design and management of repair and conversion projects; design and planning for extensions and new build properties within the curtilage of listed and historic buildings, National Parks, Green Belt conservation and Areas of Outstanding Natural Beauty (AONB).

In association with Alan Dickinson MRICS we offer:

- Building surveys
- Condition reviews
- Method statements
- Heritage statements
- Assessments of Significance
- Archaeological interpretative reports
- Historical research



The Granary, Halden Place, Halden Lane, Rolvenden TN17 4JG  
T: 01580 241278 E: [info@michaelharrisassociates.com](mailto:info@michaelharrisassociates.com)  
[www.michaelharrisassociates.com](http://www.michaelharrisassociates.com)

EMPLOYED SKILLED WORKFORCE | RENOVATIONS & EXTENSIONS  
CONVERSIONS & ALTERATIONS | DESIGN & BUILD



**A.T. PALMER LTD**

RESTORATION SPECIALISTS EST.1949

T: 01233 770077

Smarden Business Estate, TN27 8QL

[atpalmer.co.uk](http://atpalmer.co.uk)

**ASH**  
SCAFFOLDING LTD

Conservation  
Scaffolding Specialists



Smarden Business Estate, Smarden, Ashford TN27 8QL  
Tel: 01233 770373 email: [info@ashscaffoldingltd.co.uk](mailto:info@ashscaffoldingltd.co.uk)  
[www.ashscaffoldingltd.co.uk](http://www.ashscaffoldingltd.co.uk)



## HOW TO...

### REPLACE BROKEN GLASS

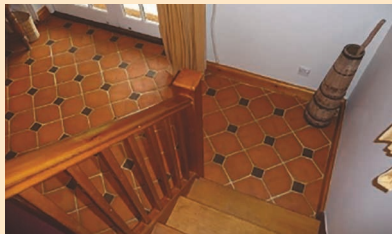
Replacing a broken glass in a period property may seem like a daunting task, but it's pretty straightforward.

- Cover the floor with a dust sheet and wear gloves, eye protection and knee pads. Put sticky tape over the whole of the cracked glass pane to stop broken pieces scattering.
- Run a craft knife between the beading and the glass to break the old paint seal. Prise up the beading using an old chisel.
- Place a cardboard box behind the pane. With a mallet, tap firmly around the edges to remove the old glass. Chip away old putty with a scraper.
- Any bare areas of wood will need to be primed. Clean the surface, then use clear, flexible silicone sealant to apply a generous strip along the face of the rebate where the new glass will be.
- Put the new glass into the frame so there is an equal gap all round. Press it against the rebate. Do not push the centre of the glass.
- Tap a small nail in the top and bottom to hold the glass in place temporarily. Prime the wood on all faces and run another line of sealant into the rebate.
- Be careful as you nail in the new beading - it is easy to split it. Fit the long pieces last. Press the ends into the corners and allow the beading to spring into place.
- Use a centre punch to knock the pins below the surface and then make flush with wood filler. When dry, smooth with glasspaper and match with surrounding wood using stain or paint.



## There's nothing like the real thing...

*Fabricated entirely by hand from our Wadhurst clay in the heart of the Sussex countryside. Tile makers impart their own character on each tile giving the floor that timeless patina other tiles do not achieve. Our magnificent range of handmade floor tiles include seven different colours and myriad shapes. So, you can be the artist for size, colour, standard pattern or bespoke.*



Contact: Tony Kindell  
01424 756777 – 07710 244386

E: [tiles@aldershaw.co.uk](mailto:tiles@aldershaw.co.uk)

Aldershaw Handmade Tiles Ltd, Kent Street, Sedlescombe,  
Battle, East Sussex TN33 0SD



## HERITAGE BRICKWORK RESTORATION LTD

- † Lime Mortar Specialists †
- † Historic Brickwork Repairs †  
& Repointing
- † Gauged Brickwork †

Tel: 01227 264 737 Mob: 07866 388 962  
[info@heritagebrickworkrestoration.co.uk](mailto:info@heritagebrickworkrestoration.co.uk)  
[www.heritagebrickworkrestoration.co.uk](http://www.heritagebrickworkrestoration.co.uk)



Specialists in  
traditional lime mortars,  
gauged brickwork,  
stonemasonry and all  
associated crafts

Visit our website for full listings and current projects  
01622 859794 | [www.kcrltd.com](http://www.kcrltd.com) | 07831 236228  
email: [info@kcrltd.com](mailto:info@kcrltd.com)



**Kent Conservation & Restoration Ltd**  
Historic Building Craftsmen



## Jane Elizabeth Architects

**RIBA**   
Chartered Practice



Rural and Agricultural planning,  
Barn Conversions, Listed Buildings, Extensions,  
Equestrian Facilities and Building Regulations.

Contact us on 01622 884373 Mobile: 07715860787  
email: [janeelizabetharchitects@gmail.com](mailto:janeelizabetharchitects@gmail.com)  
[www.janeelizabetharchitects.co.uk](http://www.janeelizabetharchitects.co.uk)

*Develop and and utilise your property  
making designs into reality*

# Beautiful, beguiling & bewitching

## Welcome to Boys Hall

We're delighted to be given the chance to feature the restoration and renaissance of a lovely and significant gem of a Jacobean manor house, nestling in the outskirts of Ashford.

In this first part we meet the people who took on the task and we take a peek behind the scenes at the on-going extensive repairs and the journey to rebuild it that started over two years ago, and which will culminate in the 17th Century period property opening its doors as a restaurant with rooms this autumn.

This family house is truly a family concern, courageous couple Kristie and Brad Lomas purchased the property along with her parents Richard and Rita. Kristie and her family are from Mersham in Kent. She studied photography at university and finding she had an interest in the world of hospitality, she moved to London. After a spell of working for





various establishments, she started her own Café Bar in Kings Cross with a friend, which turned out to be a great success. Brad was the Operations Director for a chain of Pubs in London, which was how the couple met. Their relationship flourished, marriage and parenthood ensued, followed by the desire to find a project they could work on together outside of London.

It's here that an interesting twist of fate occurred, they had looked at many prospective business opportunities all over the country, including north Wales, but none suited them. Then, an alert for this one popped into Kristie's inbox. Boys Hall, a gorgeous house with three acres of gardens

presented quite a challenge and immediately got her attention. It was just what she was looking for and when she realised it was so close to her family home, she knew it was an opportunity not to be missed.

The Grade II Listed Manor House was in need of a great deal of TLC, she was amazed that this beautiful house was just over three miles from where she had grown up and she never knew it existed until then. It offered everything she was looking for; a period property in dire need of restoration, a project to make a future business for her and Brad, and something that had been missing from others they had looked at, the all important location, as new parents of two little ones the proximity to her parents, clinched it.

Brad, Kristie and her parents purchased Boys Hall and took possession in November 2019. Of course, that date we now know coincided with the beginning of the Coronavirus pandemic with a nationwide lockdown following in March. It was uncharted territory for everyone, and any immediate plans that included building or renovation works had to be put on hold, and no one really knew how long for. However, as Kristie explained to me it was a case of trying to turn a set back into an opportunity, if they couldn't begin work on the building, as builders couldn't come in and supplies couldn't be delivered, then they started work on the grounds around the house.

What was a completely overgrown thicket of brambles and weeds was gradually tamed after many backbreaking hours of hacking away, and what began to be revealed were areas of lawns, terraces and formal gardens. She says it was a time of delightful discoveries, as the tangled growth was cleared plants started to grow





back, it seems some of the original occupants of the garden appreciated the opportunity too and emerged. Foxgloves and many other plants had self-seeded and an unusual original hydrangea called Libelle was discovered. There were also splendid specimen trees; gingkos and laburnums, not to mention an ancient mulberry tree, thought to be over 400 years old has survived. It's difficult to believe it when you see the gardens now what a state they were in. They have been transformed by masses of hard work, particularly by Kristie and her mum. Over the past two years they have pruned, weeded, mowed, created herbaceous borders and a formal rose garden, and restocked by taking many cuttings. It has been a labour of love that has been well worthwhile and has become a passion.

Another opportunity grasped by Kristie during lockdown, was the chance to research the old house and look into the fascinating history of the previous occupants. There are many tales to tell. Thomas Boys began construction of the house in 1616 using materials from a nearby property, Moat House that had been demolished. It was completed in 1632 in its current location. The style of the original house is thought to be typical of a medieval timber framed Wealden hall house, which over the years has unsurprisingly been adapted by its many inhabitants. Kristie's research has identified eleven families as owners of the property, however there may be many more residents that were tenants throughout the period between, 1616 to 2001. Coats of Arms for some of these families have been carved as decorations above one of the main fireplaces, some very well known names in the local area such as Boys, Bonnington, Barry



and Knatchbull. Also this role of honour is the Invicta Horse, symbol for the county of Kent.

There are tunnels underneath the house that are rumoured to have been used by smugglers, no one knows now where the tunnels linked to, possibly the church at Sevington, and the local inn. Sadly this can't be substantiated as they have collapsed in on themselves, but they are intriguing and can be accessed from the cellar. In 1970 a hoard of 17 gold coins in a pot were uncovered in the earth below the main kingpost in the hall of the house, the oldest dates to the reign of Henry VIII, these are now at the British Museum.

There is also a fascinating account in Mrs. Henry Wood's book *Argosy* dated 1880, these were books released twice a year, full of short







stories curated by her. Included is a story of a Christmas party that took place at Boys Hall in 1760. The descriptions of the house, with its large, low rooms, its great well staircase, the square low room where four massive beams meet overhead and features like the decoration on the fireplace, "...where birds of wonderful plumage wrought in stone are sitting on golden boughs" so accurately describe key elements of the house that remain to this day.

As the lockdown eased the long awaited work on the house itself could begin in earnest, but like many building projects over the past couple of years there have been the inevitable delays mainly due to supply chain issues, which has meant the opening has had to be rescheduled for the autumn. Brad, Kristie and her parents, along with a small team of local carpenters, tradespeople and labourers have tackled all the main renovation jobs, including the demolition of the old swimming pool area to construct the new restaurant and kitchen. Timber for the project has been sourced locally and milled on site. It's been a gradual process of reinstating and restoring each part of the wonderful old house. And at last things are really coming together, so much so that many



of the bedrooms and other areas are finally being dressed with their finishing touches and furniture moved in to position.

Now is a time to revel in sumptuous fabrics, signature wallpapers and glorious colour palettes, something Kristie definitely has a flair for. She is artfully combining these materials with treasured items sourced from auctions and antique fairs, to complement the existing wonderful wood panelled rooms with magnificent feature fireplaces that greet you at every turn of the historic interior of this precious place. Worthy of a mention, it is thought that the particularly fine ornately carved panelling in the main bedroom is in fact from Windsor Castle.

In the next part of the story in our autumn issue, we will see the results of all the hard work when Boys Hall is revealed in all its glory. For more info: [boys-hall.com](http://boys-hall.com).










- Wired & Wireless Intruder Alarms
- CCTV Systems
- 24hr Monitoring
- Security Lighting

**CACTUS SECURITY**



**COMPLETE HOME SECURITY SOLUTIONS**

Proud members of  
**Checkatrade.com**  
 Where reputation matters

SSAIB registered


CHAS

ISO 9001:2015



**01227 365000**  
**07958 180621**

info@cactussecurity.co.uk    www.cactushomesecurity.co.uk

*Do you need shelter and shade?*



Verandas • Awnings • Carports • Roller Garage Doors  
 Contemporary and traditional styles for all properties.  
 Remote control lighting, heating, and vertical screens.

Call SBI Ltd 0800 0742 721 sbiproducts.co.uk



NOW OPERATING SELF  
 DRIVE BOAT HIRE



## KENTISH LADY HIRE CRUISES

Scenic River Medway boat trips to Allington and Teston

Take in the sights and splendour of the Maidstone stretch of the River Medway from the comfort of the Kentish Lady River Boat. One hour trips or three hour cruises available plus the opportunity to visit Allington castle possibly Kent's best kept secret, with its beautiful gardens, courtyards and Great Hall.

The Kentish Lady is also available for functions, including wedding receptions, birthdays or Champagne gatherings.



Tel: 01622 753740 | Email: [boattrips@kentishlady.co.uk](mailto:boattrips@kentishlady.co.uk) | [www.kentishlady.co.uk](http://www.kentishlady.co.uk)

# Join Chic et Tralala at the Brocante and fête at the stables this summer

Nestled in Underriver (near Sevenoaks) we think you will enjoy the friendly atmosphere, the beauty of the countryside, the warm welcome from all participants, the fun and the quality. This event is a celebration of community life, life style and supportive spirit. Not only are they fundraising for a great charity – The Mount Camphill Community, based in Wadhurst, they are also supporting unique businesses, retailers, artists and crafters. Relax, socialise, enter the raffle, shop or browse. The entrance is free with easy parking. This summer there will be a pop up café run by Strawberry Rose Events, serving refreshments, delicious cakes and light bites through the day. The event runs for four days from Thursday 30th June until Sunday 3rd July 2022, with games for kids during the weekend. Contact@chicettralala.co.uk - Insta: @chictralala



## BROCANTE & FÊTE AT THE STABLES *in Underriver*

Thursday 30th June, 11am-5pm

Friday 1st, Saturday 2nd July,  
10am-5pm

& Sunday 3rd July, 11am-4pm

*Free entrance & parking*

### COUNTRY COCKTAIL PARTY

*Saturday 2nd July, 7.30pm*

Limited number of tickets (£28pp)

To book contact:

enquiries@strawberryroseevents.co.uk

The Stables, 1 Underriver House Cottages,  
Underriver House Road,  
nr Sevenoaks TN15 0SJ





# AV Trinity

Chartered Independent  
Financial Advice

**Independent  
Financial Planners &  
Mortgage Advisers**

**Based in  
Tunbridge Wells  
for over 30 Years**

**We are proud to be  
Chartered Financial  
Planners**



Our award-winning service helps individuals, professionals and businesses manage their entire financial operations, including:

- Investments
- Pensions & retirement
- Mortgages – residential
- Mortgages – buy to let
- Equity release
- Care fee planning
- Protection & life insurance
- Inheritance tax planning
- Divorce finances
- Pension sharing

**Fully Independent  
Whole of Market Advice**



**Contact us for a free initial conversation**

**01892 612500 | [www.avtrinity.com](http://www.avtrinity.com) | email: [info@avtrinity.com](mailto:info@avtrinity.com)**

AV Trinity Limited, 77 Mount Ephraim, Tunbridge Wells, Kent TN4 8BS

Authorised and regulated by the Financial Conduct Authority – FCA No: 182032

Registered No: 02012267

Investments can go up and down in value, so you could get back less than you put in



# Supporting the Kent community for over 235 years

Whitehead Monckton solicitors are based in Tenterden, Canterbury, Maidstone and London providing specialist legal services to individuals and businesses. Our clients tell us we are good listeners and great lawyers, but don't take their word for it.

## If you would like help with:

- Wills
- Tax & Estate Planning
- Probate
- Family
- Residential Conveyancing

## If your business needs help with:

- Contracts & Transactions
- Property
- Licensing
- Employment



**Call Maidstone 01622 698000**

or visit **[www.whitehead-monckton.co.uk](http://www.whitehead-monckton.co.uk)**

[info@whitehead-monckton.co.uk](mailto:info@whitehead-monckton.co.uk)

5 Eclipse Park, Sittingbourne Road, Maidstone, Kent, ME14 3EN





BENENDEN  
A COMPLETE  
EDUCATION

# Day Boarding at Benenden

Now welcoming day boarders  
in Years 9 and 12



New School Hall and Music School Opening 2022



Details at [www.benenden.school/day](http://www.benenden.school/day)

# SCHOOL STARTERS:

## Preparing your child for the next step



When the new term starts in September, thousands of children up and down the country will have the excitement, and trepidation, of starting a new school. However, if you're still preparing your children for the big move next year and are thinking of sending them to private or boarding school, then there are a few things that you can do to give them the best chance of getting into the school they want.

Private schools, boarding schools and even some sixth forms rely heavily on the interview process to determine which students will be joining them the following year. Those pupils with their hearts set on such institutions will undoubtedly have been studying hard to make sure that their exam results pass muster. That being said, and with such a high standard of curricular excellence in the applications, schools will be relying on how students come across at interview to help them make final decisions.

Indeed the preparation for this (possibly first

ever) interview will stand your child in good stead for the rest of their lives. It may not be a priority in many primary schools, but teaching your child how to interact confidently with adults, is a crucial life skill and you are the best person to take charge of their tuition in this respect.

The key to success here is not to put too much pressure on your child: they need to know how important this next step is, but creating unnecessary anxiety will be counteractive and may establish an unwanted precedent for the future. For many interview boards, creating a harmonious and balanced school community is on a par with, and sometimes even more important than exam results. It's not unknown for schools to pass over A-plus students in favour of those who have as yet unrealised potential, both academic and social.

This can particularly be the case with younger students, and so making sure that your child's personality and kindness shine through at interview is the most helpful thing that you, as a parent, can do.



# Sutton Valence School

One of Sutton Valence School's students give us an insight into why he loves boarding at this prestigious educational establishment in the heart of Kent.

**First Name** Tyler Weekes

**Age/year** 18, Upper Sixth

***How long have you boarded here?***

I have boarded here for five years in St Margaret's House.

***How are the rooms/buildings different since the renovation?***

It has changed significantly, but regardless of the new modern changes, the community feel has lingered on. Coming back into the newly-renovated house in September 2021 still felt homely.

***What do you like the most about the changes?***

I like the changes because of quality of the renovations within the rooms, with a lot more of a modern feel, creating a better environment to get work done and we have all enjoyed the new recreational rooms during our downtime.

***What do you enjoy most about boarding here?***

The thing I enjoy most about boarding at Sutton Valence School is the family feel in the boarding house and the mixing of the year groups, which creates a great environment for everybody. I think that there is a healthy mix between study hours (in which we receive brilliant support) and the recreational time during boarding makes it an exciting place to be. We have a huge range of opportunities in the evenings, such as mixing with the other houses, full use of the Sports Hall, Pool, Strength and Conditioning Gym, Cardio Suite,

AstroTurf and Tennis courts, watching TV with the other boys or playing on our PS4, especially when there are tournaments on! I think that boarding at SVS is excellent, and allows me to be myself outside of my home environment, which creating a great study environment, especially when we are close to taking our examinations, and the mutual connection on the Sixth Form corridor, as well as the younger pupils on the top floor, really shows the respect and understanding between the different year groups. Boarding have given me a greater sense of self-confidence; a place to make friends, and a greater understanding of living away from home and gaining vital independence - but with the comfort and support of our friends, peers, Housemaster and boarding house staff.

***What would you say to prospective students who are thinking of coming here?***

I would say do it! Come and experience the opportunities that boarding offers, that is unlike





other places, with the excellent facilities within the house and the freedom you are given in the evenings; to have fun, stay active, socialise, and most importantly, to be yourself.

*What is your best memory of your time at the School?*

The best memory I have of being at School is captaining the 1st XV Rugby team in the National Vase final at Twickenham, and especially seeing the rest of the St Margaret's boarding house backing the whole squad on that day was fantastic. There was six boys from the house in the squad and seeing the whole team flourish on the team was incredible. Although we did not take the trophy home, I will never forget the support that we received on our return to the house. It was a very special time and I have built relationships that I will cherish forever.

This year, Sutton Valence School was a finalist in the Boarding Schools' Association (BSA) Boarding House Extension or Refurbishment Award category.

Following our extensive refurbishment of St Margaret's, the entry highlighted the sustainability, use of space and innovation that the renovation incorporated. To book a tour of the School or attend an open morning, please visit [www.svs.org.uk](http://www.svs.org.uk).





## Gracious Lane, Sevenoaks

Fairseat is an impressive attached Victorian family home with striking character features and generously proportioned accommodation arranged over two floors. The house was originally built in 1876 and was divided in the 1950s. Since being divided Fairseat has been owned by two families, with the current owners having lived here since the mid-1970s. It has been meticulously maintained during this time and offers the opportunity to update as required. There is an attached coach house which provides garaging, together with a courtyard and driveway providing additional parking. Of particular note are the beautiful established gardens which provide a wonderful backdrop, and in total the plot amounts to about one acre.

The principal reception rooms provide elegant formal entertaining areas together with more informal family living. The exceptional drawing room was once the billiards room to the original house and features oak panelling to the walls with plate racks, parquet flooring and an open fireplace. The dining room has a fireplace with gas connected and arched doorway providing access to the rear terrace. The sitting room has an open fireplace and an attractive outlook to the front.

The kitchen/breakfast room is fitted with a range of cupboards together with an attractive dresser. There is a gas fired Aga and space for further appliances. The breakfast area has an outlook to the terrace and leads to the conservatory. There is also a glazed side porch





which leads to the coal store.

The conservatory has a wonderful outlook over the gardens and doors lead to the terrace.

Completing the ground floor accommodation is a shower room, a large utility room with a door to the terrace, and a cloakroom. The cellar comprises two stores with wine bins.

Arranged over the first floor are five double bedrooms, most with attractive fireplaces and fitted storage cupboards.

The house is approached over a shared driveway which culminates with a lawned turning circle providing parking for both Fairseat and Hernewood. There is an attractive border to the side of the front door to Fairseat and a mature camellia under planted with spring bulbs.

To the side, a gated entrance leads to an attractive courtyard and the former coach house, which provides garaging and storage. There is power and light connected and it is considered this building offers potential to convert to ancillary accommodation, subject to

the necessary building regulations. The wonderful rear gardens feature a generous flagstone terrace providing an ideal area for al fresco entertaining and a superb vista over the gardens. A level lawn extends to a bank of deciduous azaleas, flanked on one side by hedging and a pathway with rhododendron beds to the other. This path leads though the

## The details

- Impressive family home • Elegant proportions • Versatile accommodation • Sevenoaks station approx. 2.5 miles
- Sevenoaks town approx. 1.8 miles • Beautiful established gardens • Garaging and parking

*Strictly by appointment with Savills*

*Tel: 01732 789700*

*Price: £2,250,000*

*[www.savills.com](http://www.savills.com)*

garden to a number of connected ponds with waterfalls. On from here is a charming Victorian rock garden with a small stone summerhouse providing a seating area. The paths multiply and continue around the gardens and to one side is a further area of lawn, flanked on one side by a high brick wall and a bank of more deciduous azaleas. There is a wonderful array of mature specimen plants providing year round interest and in total, the plot amounts to about one acre.





# THERE'S A NEW GIN IN TOWN

ONLINE SHOP:

[WHITSTABLEHARBOURGIN.CO.UK](http://WHITSTABLEHARBOURGIN.CO.UK)



Come and see us at our Whitstable  
Harbour Gin Store - Unit 2 South Quay  
Shed - Whitstable CT5 1AB

OUR PREMIER BATCH DISTILLED JUNE 21ST

SMALL BATCH LONDON DRY

**WHITSTABLE HARBOUR GIN**

WHERE THE WORLD IS YOUR OYSTER







We love quiche, and using cooked quinoa instead of pastry as a base elevates this quiche to the next level. The delicious, crispy, chewy crust makes a nice change to traditional pastry.

# The Seasonal Baker

Former Bake Off contestant Michelle was known on the show for her flavoursome, colourful bakes and for championing seasonal, locally sourced and homegrown produce. Whether it's a simple loaf for breakfast or a striking showstopper cake for a celebration, she loves using seasonal food to create tasty recipes for the whole family to enjoy.

**SERVES  
SIX**

## YOU WILL NEED

2 large egg whites  
250g/9oz cooked quinoa  
400g/14oz rainbow chard  
170g/6oz smoked bacon  
1 small onion  
80g/3oz mature cheese (grated)  
2 large eggs  
200ml/7fl oz double cream  
Salt and pepper, to taste  
Oil/butter for greasing

YOU WILL NEED A  
20CM/8IN ROUND  
FLUTED TART TIN

## RAINBOW CHARD QUINOA CRUSTED QUICHE

### METHOD

Preheat the oven to 200°C (180°C fan oven) Gas 6 and lightly grease the tin.

Whisk the two egg whites in a bowl and add the cooked quinoa, reserving a tablespoon of the egg white. Mix together to coat the quinoa, then tip into the tin. Using the back of a spoon, press the quinoa firmly up against the sides and onto the base of the tin. Bake in the oven for 15 minutes until the case is dry to touch and shrinks away from the sides a little. Brush the sides and base with the remaining egg white and pop back into the oven for 5 minutes.

For the filling, trim the leaves from the rainbow chard and roughly chop. Steam the chopped leaves and stems for 5–10 minutes to soften and place them on kitchen paper to absorb the moisture.

Cube the bacon and finely dice the onion. Gently fry them over a medium heat, then transfer to a bowl to cool using a slotted spoon.

Place the cooled bacon, onions and chard leaves into the base of the crust, top with grated cheese, then arrange the chard stems in a circular pattern starting from the outside and working inwards, shaping the chard with your hands as you go.

Whisk the two whole eggs with the cream and season with salt and pepper. Fill the tin halfway with the creamy mixture, then transfer it onto the shelf of the oven and fill to the top. Bake for 25–30 minutes until golden with a slight wobble in the centre.

Leave to cool in the tin, then transfer to a board or platter and slice.

# APRICOT AND ALMOND FLAPJACKS

## YOU WILL NEED

- 150g/5oz unsalted butter
- 115g/4oz condensed milk
- 100g/3½oz soft brown sugar
- 2 tbsp golden syrup
- 1 tsp vanilla bean paste
- 70g/2½oz dried apricots
- 35g/1oz blanched almonds
- 300g/10½oz porridge oats
- 30g/1oz mixed seeds (sunflower, pumpkin, poppy and linseeds)

YOU WILL  
NEED A 23CM/9IN  
SQUARE TIN

## METHOD

Preheat oven to 190°C (170°C fan oven) Gas 5 and line the tin with baking paper.

Place the butter, condensed milk, sugar, golden syrup and vanilla into a saucepan and heat gently until all the mixture has melted and is smooth.

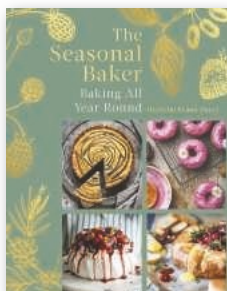
Roughly chop the apricots and almonds and add these to the saucepan (reserving a few for the top) along with the porridge oats and mix well. Scatter in the seeds, roughly mix and pour the mixture into the tin.

Press the mixture into the tin with the back of a spoon and scatter the remaining apricots and almonds on top. Bake for 20–25 minutes. This makes a soft chewy flapjack, so bake it a little longer if you prefer yours firmer. Leave to cool in the tin for 10 minutes.

Lift the flapjack out of the tin using the baking paper and cut into squares or slices.

## TIP

For soft and chewy flapjacks that melt in the mouth, make sure you don't overbake them. They will continue to cook in the residual heat of the tin as they cool and firm up.



## WIN A COPY OF THE SEASONAL BAKER

For your chance to win a copy of The Seasonal Baker, please email your name, address and telephone number to:

**dawn@conservationnews.co.uk**

*Closing date: Thursday, 1st September 2022*

The Seasonal Baker: Baking for All Seasons by Michell Evans-Fecchi is out now (£20, Robinson)  
All images © Ben Fecci





These flapjacks are studded with juicy apricots and crunchy nuts and seeds.

The condensed milk adds extra creaminess, taste and texture.

They are the perfect tasty snack and a great addition to any lunchbox.



— LOCAL —  
Farmers' markets





# Support your local farmers' market

For more information and to find out what's in season visit [www.kfma.org.uk](http://www.kfma.org.uk).

## JUNE

**WEDNESDAY: 1st, 8th, 15th, 22nd & 29th** Rye

**THURSDAY: 2nd, 9th, 16th, 23rd & 30th** Ashford Food Hub; Rolvenden; Shipbourne

**THURSDAY: 3rd, 10th, 17th, 24th & 31st** Ashford Food Hub; Rolvenden; Shipbourne

**FRIDAY: 3rd**  
Egerton; Reuthe's Sevenoaks; Tenterden

**SATURDAY: 4th**  
Biggin Hill; Chatham; Deal; Gravesend; Penshurst; Tunbridge Wells; Wye

**SUNDAY: 5th**  
Bearsted; Tunbridge Wells; Whitstable Castle

**TUESDAY: 7th**  
Capel-le-Ferne; Folkestone Food Hub; Hildenborough

**SATURDAY: 11th**  
Bridge; Deal; Gravesend; Hythe; Tunbridge Wells; Whitstable

**SUNDAY: 12th**  
Elham; Lenham; Tonbridge; Tunbridge Wells

**SATURDAY: 18th**  
Deal; Gravesend; Tunbridge Wells; Wye

**SUNDAY: 19th**  
Aylesford; Folkestone; Rochester; Staplehurst; Tunbridge Wells; Watlingtonbury

**SATURDAY: 25th**  
Ashford; Bridge; Deal; Gravesend; Hythe; Knockholt; Tunbridge Wells; Whitstable

## JULY

**FRIDAY: 1st**  
Egerton; Reuthe's Sevenoaks; Tenterden

**SATURDAY: 2nd**  
Biggin Hill; Chatham; Deal; Gravesend; Penshurst; Tunbridge Wells; Wye

**SUNDAY: 3rd**  
Bearsted; Tunbridge Wells; Whitstable Castle

**TUESDAY 5th, 12th, 19th & 26th**  
Capel-le-Ferne; Folkestone Food Hub; Hildenborough

**WEDNESDAY: 6th, 13th, 20th & 27th** Rye

**THURSDAY: 7th, 14th, 21st & 28th**  
Ashford Food Hub; Hastings; Rolvenden; Shipbourne

**FRIDAY: 8th, 15th & 29th**  
Egerton; Tenterden

**SATURDAY: 9th**  
Bridge; Deal; Gravesend; Hythe; Whitstable

**SUNDAY: 10th**  
Lenham; Tonbridge; Tunbridge Wells

**SATURDAY: 16th**  
Deal; Gravesend; Tunbridge Wells; Wye

**SUNDAY: 17th**  
Aylesford; Folkestone; Rochester; Staplehurst; Tunbridge Wells; Watlingtonbury

**SATURDAY: 23rd**  
Ashford; Bridge; Deal; Gravesend; Hythe; Knockholt; Tunbridge Wells; Whitstable

**SUNDAY: 24th**  
Tunbridge Wells

**SATURDAY: 30th**  
Deal; Gravesend

## AUGUST

**TUESDAY: 2nd, 9th, 16th, 23rd & 30th**  
Capel-le-Ferne; Folkestone Food Hub; Hildenborough

**WEDNESDAY: 3rd, 10th, 17th, 24th & 31st** Rye

**THURSDAY: 4th, 11th, 18th, 25th**  
Ashford Food Hub; Rolvenden; Shipbourne

**FRIDAY: 5th** Egerton; Reuthe's Sevenoaks; Tenterden

**SATURDAY: 6th** Biggin Hill; Chatham; Deal; Gravesend; Penshurst; Tunbridge Wells; Wye

**SUNDAY: 7th**  
Bearsted; Tunbridge Wells; Whitstable Castle

**FRIDAY: 12th, 19th & 26th**  
Egerton; Tenterden

**SATURDAY: 13th**  
Bridge; Deal; Gravesend; Hythe; Tunbridge Wells; Whitstable

**SUNDAY: 14th**  
Lenham; Tonbridge; Tunbridge Wells

**SATURDAY: 20th**  
Deal; Gravesend; Tunbridge Wells; Wye

**SUNDAY: 21st**  
Aylesford; Folkestone; Rochester; Staplehurst; Tunbridge Wells; Watlingtonbury

**SATURDAY: 27th**  
Ashford; Bridge; Deal; Gravesend; Hythe; Knockholt; Tunbridge Wells; Whitstable

**SUNDAY: 28th**  
Cliftonville; Sandgate; Tunbridge Wells



# SIGN UP FOR THE BRAND NEW MACKNADE WINE CLUB

*A subscription service featuring hand-selected wines delivered to your door,  
paired with seasonal recipes and tastings notes from our wine experts.*



To find more details or to sign up simply **SCAN HERE >>>**  
or head to [www.macknade.com/collections/subscriptions](http://www.macknade.com/collections/subscriptions)



**MACKNADE**  
QUALITY & COMMUNITY SINCE 1847

SCAN ME  
[WWW.MACKNADE.COM](http://WWW.MACKNADE.COM)  
🐦 📘 📷 📺  
@MACKNADE

# THE PEPPERBOX INN

*Country pub and restaurant, in the heart of Kent*



Windmill Hill, Harrietsham, Kent ME17 1LP  
www.thepepperboxinn.co.uk | Tel: 01622 842558



*Bull Green Farm*  
QUALITY FARM PRODUCE

Bull Green,  
Bethersden TN26 3LB

Tel: 01233 822463

Email: [Shop@BullGreenFarm.co.uk](mailto:Shop@BullGreenFarm.co.uk)

We are a family-run farm rearing Dexter cows, sheep and chickens. We believe animals should be able to roam free in the fields and enjoy fresh air and green grass.

We have a nicely stocked shop with fresh eggs daily, home grown veg, and a variety of local products such as Kentish honey, jams, and occasionally freshly baked cakes. We also have a freezer packed with locally made pies and tasty treats.



# CHAMPION WINES

A delightful independent wine shop/bar in the heart of Chislehurst

Champion Wines, in the heart of bustling Chislehurst High Street, is a unique wine merchant because it not only sells a range of over 400 wines from around the world, but it also features a wine bar where you can sample old favourites or try out new wines and, if you are a little peckish, enjoy a cheese or charcuterie platter.

Penny Champion, the Australian proprietor, has long had a passion for wine; having worked in the trade for over 30 years she always had a vision to open her own wine shop. Many of us remember when Australian wine really took off in this country in the early 1990s and our supermarket shelves became packed with Chardonnay and Shiraz and the consumer boom began! Penny, arriving in the UK in 1990, was

central to the development of our love for Aussie wine while working as a rep for Australian winemakers, and during this time she built up her knowledge as well as her contacts. With all this experience behind her, she finally realised her dream and in 2011 Champion Wines was born.

Don't expect to see the big brands that you see in supermarkets and large well-known retailers, as Champion's range is from smaller growers who produce great wines with passion in small batches which aim to reflect the terroir and heritage of the region. Although you will see many well-known appellations and regions, the producers are hand-picked



## OPENING TIMES

Closed Monday and Tuesday

Wednesday 11 – 5pm • Thursday 11-6pm

Friday and Saturday 11-8pm • Sunday 11-3pm



for their commitment to producing excellent quality wine at affordable prices and all the wines are tasted before they reach the shelves, which demonstrates a commitment to quality and service.

## SUMMER IS DEFINITELY ROSÉ WINE TIME!

June 11th is National Rosé Wine Day and it's a double celebration for Champion as they are also marking their 11th birthday. Customers can pop in and enjoy a delicious glass or two of Selladore en Provence Rosé (formerly known as William Chase Rosé) as seen in the picture, try Eton Mess cake, meet the team and relax in a warm, friendly atmosphere. Or why not try the White Selladore

– a crisp citrusy nose and on the palate, dry and fruity with a hint of white pepper.

Champion offer a full range of other rosé wines including the famous and very sought-after Whispering Angel from Provence as well as a number of rosé wines from various parts of France. But it's not only French rosé, but also rosés from around the world. For example, have you tried The First Lady from Stellenbosch in South Africa – red fruit, watermelon and rose petals? Or what about a rosé made from a blend of Cabernet Sauvignon and Bobal (a local Spanish grape) from Valencia in north-east Spain – raspberry, redcurrant with hints of citrus and peach – ideal for those warm summer evenings with or without food. You can

even try a rosé from Argentina or Uruguay – something for everyone.

Whilst we were there, we shared a glass of rosé Prosecco which was absolutely delicious! An excellent nose, bursting with delicate red fruit, and on the palate the creamy texture blended perfectly with the fresh acidity – not too heavy on the alcohol either – definitely recommended, so ask for a glass when you visit.

But if rosé is not for you and you are looking for a white wine with a difference, try their Chateau de Rhodes – a delicious white wine from Gaillac in south-west France, not far from Toulouse. This wine is a blend of Sauvignon Blanc and Muscadelle together with the ancient grapes local to the region including Mauzac, Ondenc and Loin de l'Oeil. On the nose there





each wine is quality as well as being unique – you won't find these exact wines in the supermarket! There are three levels of subscription – Bronze, Silver and Gold – prices on request.

### WEDNESDAY WINE TASTINGS

Champion's also offers a wine tasting on the last Wednesday of the month at 7.30pm – last month was fizz and how to make sparkling wine using the traditional method. June 29th is the next one and I recommend checking beforehand the exact tasting on 0203 581 9935 for booking and further information.

### CHAMPION'S WINE BAR

The perfect place to meet up with friends for a few drinks or before you go out to dinner. You can either have a glass from the wine bar menu or choose a bottle from the extensive

is a lovely intense perfume of white flowers, citrus, tarragon and anise and the palate is rich and mouth-filling with a lovely long length. The flavours echo the aromas detected on the nose which reflect the Gaillac terroir. Ideal as an aperitif or pair with seafood or fish.

### CHAMPION'S WINE CLUB

Many people do find wine intimidating – so many wines – how do we choose? – what do we choose? Simply the thought of it makes us choose the same wine over and over again – but why miss out? Why not try Champion's wine club! It's absolutely free to sign up and you will be delivered a mixed case of 12 wines five times a year – usually six reds and six whites with full tasting notes and food-pairing suggestions. What a great way to try new wines in the comfort of your home, knowing that the emphasis with

range, and if you are feeling a little peckish why not have a cheese platter: choose from a selection of Cheddar, Manchego, Goat's Cheese, Cashel Blue and Somerset Brie as well as charcuterie. The setting is perfect, overlooking Chislehurst Pond with a little light music in the background to while away a summer's evening... definitely worth a visit!

### OPENING TIMES

Closed Monday and Tuesday

Wednesday 11-5pm

Thursday 11-6pm

Friday and Saturday 11-8pm

Sunday 11-3pm

If you would like to know more:

email [pc@championwines.co.uk](mailto:pc@championwines.co.uk)

Phone 0203 581 9935





Make this space your own

THE  
CURIOUS  
EATERY

Have you thought about having your Christmas party in our space. Now taking Christmas bookings for exclusive hire.

Tel: 01622 299359 [www.thecurioseatery.co.uk](http://www.thecurioseatery.co.uk)

Curious Eatery, Albion Inn,  
1 Church Street, Boughton Monchelsea,  
Maidstone ME17 4HW





HARVEY MARIA®  
FABULOUS FLOORS

 dewitt™  
FLOORING SPECIALISTS  
SINCE 1986

DEWITT RESIDENTIAL FLOORING LIMITED

PLEASE CONTACT US TO DISCUSS YOUR FLOORING REQUIREMENTS: 01622 858940

9 HIGH STREET, LENHAM, KENT. ME17 2QD | [WWW.DEWITTFLOORS.CO.UK](http://WWW.DEWITTFLOORS.CO.UK)