

CONSERVATION NEWS

Kent

Autumn 2022 • Complimentary



How to create
a gallery wall

Finding the perfect
FIREPLACE

Ashford & Cranbrook RoofingTM

— Experts in heritage roofing —



Now producing hand-made clay Kent Peg tiles for our customers

www.cranbrookroofing.co.uk



Tel: 01580 242925

Some furniture is made for the here and now.
Some is built to stand the test of time.
At Neptune, we believe that the best can do both.

Good design never grows old.



N
NEPTUNE

Canterbury, 01227 209 300
neptune.com



LENLEYS
HOME

Get ready for cosy
days this **autumn**



Lenleys.co.uk

MAIDSTONE / 01622 753 073 / Sandling Road, ME14 2RF
CANTERBURY / 01227 766 655 / Roper Road, Canterbury, CT2 7EL

Welcome

Autumn 2022



Competition winner from our summer issue:
Helen Gisby, Hawkinge

Welcome to the latest edition of Conservation News. It's been an incredible summer hasn't it? We've had record breaking temperatures that have left us fighting to preserve our gardens and struggling to cool down our homes.

Still, that's all over now and we can get ready to swap fans for fires and sun hats for umbrellas! If you're anything like me you'll be really looking forward to this time of year: the cooler weather, the beautiful colours of the trees and prospect of cosy nights in around the fire.

To get you ready for everything autumn has to offer we've put together features on choosing or maintaining your fireplace, re-tiling ready for winter, weather proofing your windows and more; not to mention handy tips for an autumn garden and a host of local businesses that we trust to make your social and home life run seamlessly this quarter.

So settle back by the fire and enjoy the sound of falling rain while you peruse this edition of our autumn magazine.

Dawn



CONSERVATION NEWS
conservationnews.co.uk

Publisher
Conservation News

Contributors
Susan Hubbard
Liz Norton
Louise Tomlin

Cover: lifestyle-floors.co.uk

Design
Dandelion Design

Editor/Sales Manager
Dawn Long
Tel: 07725 732535
dawn@conservationnews.co.uk

© Conservation News 2022
Printed in the UK by Pensord

If you receive your copy of Conservation News by Royal Mail and wish to opt out of our mailing, please send an email to dawn@conservationnews.co.uk

All rights reserved.
Reproduction of any part of this magazine is not permitted without written permission of the publisher.

The publisher accepts no responsibility of any loss or damage in respect of any product or service that may be advertised.





Copperfields

OF WHITSTABLE

Cookshop & Homewares Since 1956

Inspiration for your kitchen and home



Cookware • Homeware • Gifts • Bakeware • Furniture • Electrical • Cards

shop@copperfieldsofwhitstable.co.uk • www.copperfieldsofwhitstable.co.uk
93 - 95 High Street • Whitstable • Kent • CT5 1AY • Tel: 01227 273519

OPEN 7 DAYS A WEEK



24



Autumn 2022 Contents



8 **Autumn gardening**
What to do in the garden now

18 **Autumn garden ideas**
What works and what doesn't

24 **Finding the perfect fireplace**
For your period home

39 **How to create the perfect gallery wall**
Tips and advice

47 **Choosing tiles for your home**
A quick guide

59 **Making the most of your windows**
How to add character to your building

69 **Written in stone**
We talk to Harry Adderley from Adderley Stone

88 **Recipes – win the book!**
Two great recipes from Orchard

96 **Local markets**
Support your local farmers' market

100 **Restaurant review**
Birdies, Whitstable

104 **Food miles**
What does it mean for wine



39



59



18



88



104



REPLICATING ROSES

Do you have a favourite rose that you would like to propagate? Hardwood cuttings are an easy way to do it, and autumn is the ideal time. Choose green stems that have grown this year and remove all the leaves. Using sharp secateurs, divide the stems into sections 15 to 20cm long, cutting each above a bud at the top end and below at the bottom. Pare off some of the outer surface of the stem at the base of each section. Your cuttings can now be potted and watered in. By next summer they should be taking root.

Amazing acers

As summer fades and the flowers dwindle, the vibrant hues of autumn leaves give us one last burst of colour before winter, and one tree wins hands down when it comes to intensity and variety of autumn colour – the Acer. This one is Acer Palmatum 'Sango-Kaku' which turns canary yellow with orange highlights in autumn.



Garden notes

Autumn is upon us, the evenings are gradually drawing in and winter is fast approaching. This is the time for trees and hedging; fruit trees and fruit bushes; roses and bulbs; and garlic.



Autumn gardens in Kent

The trees are turning a vibrant red, leaves are crunching under our boots and autumnal flowers are beginning to make an appearance. Here are some the gardens you'll want to visit this autumn in Kent...

- Belmont House
- Quex Gardens
- Leeds Castle
- Hole Park Gardens
- Hever Castle gardens
- Godinton House
- Penshurst Place
- Reuthe's – The Lost Gardens of Sevenoaks
- Scotney Castle



PLANT NOW FOR WINTER COLOUR

Container gardening is an excellent way to provide colour in the winter because tubs and pots can be moved around to avoid the worst of the weather. They can also be distributed to give the most pleasure. Winter pansies and primulas are amazingly tough but it's worth being adventurous (edged with a degree of caution to avoid disappointment!) by picking up tips at garden centres.

DOUBLE UP

September is an ideal month to dig up and split herbaceous plants and move things around and so now is a good time to review borders. Existing borders may look a little jaded – or perhaps it's simply time for fresh thinking? Maybe something new is indicated so why not redesign borders completely or even design and create new borders? Some plants are very vigorous and splitting them up can then result in an awful lot of plants. Unless it is genuinely part of the revised plan, don't plant all the cuttings just to ensure they're not wasted! Give them to – or exchange with – family and friends.



What to do now

- Order bulbs for planting next month – the ideal job for armchair gardeners.
- Put a net/mesh over your pond, it's easier than trying to fish out mounds of rotting leaves.
- Get the weedkiller on to those stubborn weeds. Try Round-up as it doesn't linger in the soil, but be sure to protect treasured plants.
- Reseed or returf worn patches of lawn and give it an autumn feed.
- Give evergreen hedges a last trim before winter.
- Plant new perennials while the soil is still warm.
- Continue to feed and dead-head your hanging baskets and container plants – they will often keep going until the first frosts.

Don't forget the wildlife!

At the moment birds and other wildlife generally have easy pickings: leaving seed heads intact on plants such as thistles, sunflowers and teasels will provide a veritable feast. Windfall apples and other fruits will delight fruit eaters. As the weather becomes colder shelter also becomes an important factor and wildlife will derive benefits from allowing a small area of the garden to die back naturally.





LANDSCAPING SERVICES

We specialise in design and installation and are happy to be able to offer the following services:

COMPLETE GARDEN DESIGN: Patios and decking, gazebos and water features, turfing, fencing, electric gates and astroturf.

GROUNDWORK: All demolition work, footings, oversights, extensions, drop kerbs, drainage and civil engineering

CONTACT US

Tel: 01227 750191

Mobile: 07759 546838

email: ablelandscapes@btinternet.com

www.ablelandscapes.com



ABLE
LANDSCAPES

BJ CESSPOOL SERVICES LTD



If you want someone who is reliable, careful and efficient to empty your cesspool, septic tank or treatment plant please call Barry or Fiona Spicer.

- Emergency blockages
- Septic tank clearance
- Cesspool maintenance
- Treatment plant maintenance

We can help you with your home, rental properties, caravan parks, hotels and in fact any property that is not on main drains.

A jetting service can also be provided.

Tel 07796 282864 or 01233 624017
www.bjcesspool.co.uk



**FROM JUST
£7.50
PER MONTH***

*Based on a 10m x 10m lawn. Minimum order 10m x 10m. Prices include VAT and delivery. Excludes ground preparation and topsoil.

HELP YOUR LAWN TO THRIVE, NOT JUST SURVIVE

Over the last 35 years our love for lawns has continued to grow. We combine our passion and enthusiasm with innovative technology and dedicated customer service as we continue to revolutionise UK Lawn Care. Our ground-breaking **Lawn Treatment Programmes** keep your grass looking its best all year round, ensuring your lawn receives the love and attention it deserves.

Join our nation of Lawn Lovers

Email: ashford@greenthumb.co.uk
 Call: 01227 652351
 Visit: greenthumb.co.uk

GreenThumb
LAWN TREATMENT SERVICE





**ALAN
HOPKINS**

Tel: 01227 731302 or 07961 985538

www.alanhopkinstreesurgeon.co.uk

Underdown Nursery, Mystole Lane,
Chartham CT4 7BX



NPTC CERTIFIED

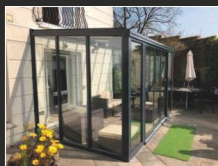
- Felling
- Thinning
- Pollarding
- Deadwood
- Site & garden clearance
- Stump grinding
- Wood chipping
- Call today for a competitive quote

ALL ASPECTS OF TREWORK

Enhance your outdoor living space



Verandas • Glass Rooms • Awnings • Pergolas
Carports • Solar Garage Doors & Shutters



SBI Ltd 0800 0742 721 sbiproducts.co.uk

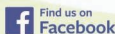
CORE

Waste Management

- Rubbish Clearances
- Bulky Waste Removal
- Garden Waste
- Builders Waste
- House Clearances
- Bins Emptied
- Man & Van Load & Go
- Cheaper Than A Skip



Fully Licensed & Insured
Contact Our Team
01227 940750 / 07704453288



Constructed and resurfaced in Kent, Sussex and Surrey



Please call Martin
for free advice
and quotations

Tel: 01424 892265
07831 643835

www.martingurr.co.uk





InThe **Country**

COUNTRY CLOTHING AND ACCESSORIES



**Come visit us in store for a warm, friendly welcome,
stocking all your needs for outdoor pursuits**

Our store is open 5 days a week, visit us at

IN THE COUNTRY

ASHFORD ROAD, BADLESMERE KENT ME13 0NX

Wednesday - Sunday 10am - 4pm

01233 742700

inthecountrykent.co.uk www.inthecountrykent.co.uk

The history of NAMES AND NUMBERS

A BRIEF OVERVIEW OF THE TRADITION AND HISTORY OF HOUSE NAMES AND NUMBERS IN THE UNITED KINGDOM

In 1765 a bill was passed which required newly built streets to be named and houses numbered. The display of door numbers on all houses became mandatory in London in 1805. On estate villages the cottages were often numbered regardless of position simply to identify them and were given plain white ceramic number labels on the door.

In rural communities houses and farms had historically been verbally defined by names which related to their purpose, their ownership, their geography or local landmarks.

The custom of naming one's home began with the English gentry naming the properties on their estates and was based on who the property belonged to or where it was located. For example, the Earl of Eddington could have properties named Eddington Manor, Eddington Lodge, Eddington Hall, Eddington Gate House and Eddington Cottages. Property naming then became popular, with tradesmen naming their properties based on their occupation. For example, The Forge, The Dairy, The Bakery, The Mill House, The Stables and Wool Cottage.

The practice of naming property became desirable within the general population with property owners naming their homes based on the most prominent and cherished features of their property and land. Some examples based on these features are The Orchard, Rose

Cottage, Three Oaks, Honeysuckle Cottage, The Willows, Holly Lodge, The Pines, Primrose Cottage, Yew Tree House and Red Tiles.

While detached houses first claimed a right to a name, terraced houses soon followed suit, even though they had a statutory number as well. Often a plaque was incorporated into the design of the facade so that the owner could have the house name added if they wished. Alternatives included gilded lettering on fanlights or even coloured leaded glass.

With the burgeoning of the suburbs naming took on a greater significance with the desire to emphasise individuality and, critically, ownership.

In contemporary times house naming has evolved from many different inspirations. The view from a property is often the inspiration for a house name as in Meadow View, Sea Vista, Hillview, Ocean View and Lake View House. Inspiration from the previous usage of the property has resulted in The Old Bakery, The Old Barn, The Forge, The Old Vicarage and The Old Dairy.

Personalising your home by giving it a name is a relatively easy procedure although it is advisable to check with your Local Authority if there are any requirements for approval when the property is already numbered.





- Softwoods
- Hardwoods
- Sheet materials
- Decking
- Machined to your design



Contact us on: 01227 738838
Email: sales@eastkenttimber.co.uk
www.eastkenttimber.co.uk



Georgian Brickwork

**Specialists in
Conservation & Heritage Brickwork**
Skilful repairs to listed & period properties
using
traditional methods and materials
Charles: 07732 975 349
www.georgianbrickwork.co.uk



WAREHAMS

Antique Garden Ornament Gustavian Furniture

68 Oxford Street - Whitstable CT5 1DG
Mobile: 07831 210139
www.warehams.com

KENT'S LEADING SPECIALISTS IN

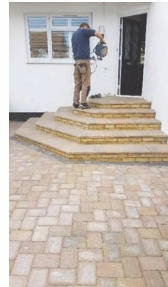
DRIVEWAYS AND PATIOS

Est. 1987

www.drivewayexperts.co.uk

Landscaping specialists

- Block paving ■ Driveways
- Decking ■ Fencing ■ Patios
- Turfing ■ Garden clearance
- Building & maintenance work



01227 749872 | 07770 964939



Preston Garden Centre

- Great seasonal colour • Hedging and screening
- Kadai Firebowl specialists
- Large selection of pots • Garden furniture • Cards & gifts
- Wheelchair friendly • Coppers Bistro
- Large selection of decorations and Christmas trees
available last week in November

Our Winter opening hours are: Open Daily 10am to 4pm
Closed all day Tuesday.

Santa weekends at Preston Garden Centre
Saturday 10th & Sunday 11th • Saturday 17th & Sunday 18th

COPPERS BISTRO – SEE PAGE 107



Come and meet Elvis,
the singing reindeer



The Street, Preston Nr Wingham, Canterbury CT3 1ED



Tel: 01227 722250



AUTUMN GARDEN IDEAS

– what works and what doesn't –

CHOOSING PLANTS FOR LATE-SEASON COLOUR

BY ALEXANDRA @ THEMIDDLESIZEDGARDEN.CO.UK

I've always thought of trees and leaf colour as the defining element of an autumn garden. And usually we do have good late-season leaf colour.

But the weather in summer dictates much of your autumn leaf colour. This summer has been exceptional – long, hot and dry. My leaf colour is not as good as usual, so I have realised how much shrubs and perennials contribute to a beautiful autumn garden.

The most magnificent tree for colour in my garden is *Cotinus coggyria* 'Grace'. It is stunning in spring and summer, with dark green-red leaves and fluffy clouds of flower. But in the autumn it is usually a blaze of fire-gold. This *Cotinus* leaf changes from dark green to this red, and usually eventually turns flame-coloured.

The trees in my garden have always been fantastic in autumn. But I think this means I've overlooked the importance of the other elements – the perennials and shrubs.

I recently interviewed garden designer and BBC Gardeners World presenter, Mark Lane. He travels around the UK a lot, and says that long, hot summers have a different impact in different parts of the UK. Autumn leaf colour is affected by how much sunshine and rain you get in the summer. We saw excellent autumn

colour in the north of the UK, not much autumn colour in the Midlands and the South East has been very variable.

The best flowers for autumn garden colour

Dahlias are great for autumn colour.

Dahlias (most now called symphyotrichum) and sedum are all flowering in my garden now. But I have missed a trick by not having rudbeckia, gaura and penstemon. Japanese anemones are often recommended for autumn colour too.

And perhaps it's just me, but echinacea – another oft-recommended autumn favourite – never survives long in my garden. I have just planted some persicaria, given to me by a friend, and am looking forward to their impact on next year's autumn garden.

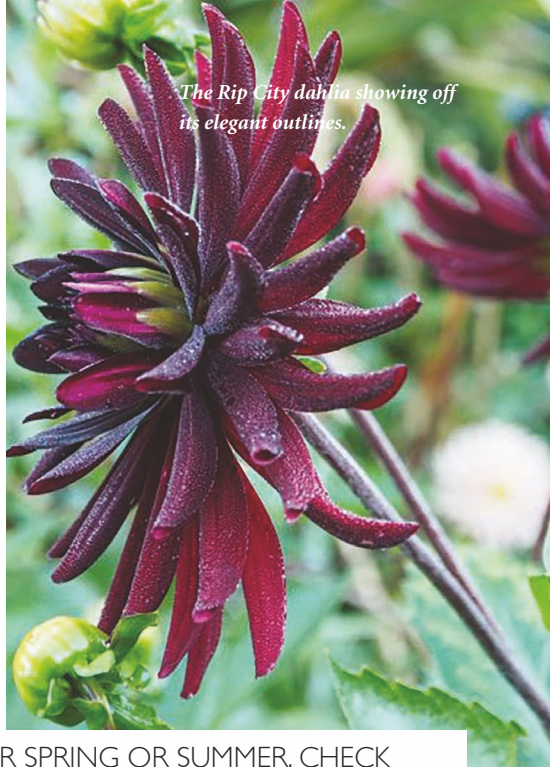
However several roses are on their second burst of flowering – the Bonica roses in the front garden, and Burgundy Ice in the main border. Bonica roses and *Nerine bowdenii* bulbs are two easy-care and super-reliable flowers for autumn colour.

Bulbs for autumn colour

We had a burst of white cyclamen earlier on in the month, but otherwise my top bulb for autumn is *Nerine* 'Bowdenii'. It was planted along the front wall of the



The leaves of the Cotinus coggyria 'Grace' are a splendid sight in the autumn garden.



The Rip City dahlia showing off its elegant outlines.

WHEN CHOOSING PLANTS FOR SPRING OR SUMMER, CHECK WHAT THEIR AUTUMN FOLIAGE IS LIKE TOO.



Bonica roses and Nerine bowdenii bulbs are two easy-care and super-reliable flowers for autumn colour.



Peonies are a wonderful addition to the autumn garden.

house by my predecessor. In fifteen years, I've thinned them out once, but have otherwise done absolutely nothing to them.

So shockingly neglected that I think you can even see weeds behind them, but they go on and on. But apparently they do take a few years to get established, so hang on in there if yours aren't doing much.

Shrubs are the late-season stars

So this autumn I have really appreciated what good autumn-leaf shrubs bring to the garden. And I realise that I've missed a trick or two. I've always adored peony foliage in the spring. It emerges a glorious dark red and looks wonderful with primroses. But I hadn't appreciated what peonies can sometimes bring to the autumn garden.

I have an unknown peony with beautiful autumn colour. And several very large peonies with no autumn colour at all. Their green leaves are just dying. Think how much more spectacular the garden would have been had I considered late-season foliage and peonies!

I wish I'd chosen more peonies for their autumn foliage as well as their flower colour.

Viburnums for autumn garden colour

Apparently Monty Don doesn't like viburnums. It seems hard to see why not – both the viburnums in my garden make a very useful contribution in two seasons of the year. In winter, *Viburnum x bodnantense* 'Dawn' has delicate, fragrant pink flowers.

Another multi-season star – *Viburnum opulus* or guelder rose has pretty white pompom flowers in spring and beautiful autumn colour.

Hydrangeas and cornus are two more multi-season shrubs. I planted my cornus for the vivid

colours of the winter stems, but am enjoying their autumn foliage too. Cornus are good in autumn as well as winter.

As with the peonies, some of my hydrangeas have beautiful autumn colour and others don't.

Grasses in the autumn garden

Grasses add texture, sibilant sound and shimmering sensuality throughout the summer months as they grow and then, from mid-August right through to Christmas, their flowering and autumnal colours match anything else that the garden can grow for colour and drama while being absolutely in tune with the season. Used well, they are a magnificent addition to any garden.

Autumn garden colour in pots

The parterre in mid October with *Panicum virgatum* 'Shenandoah' and topiary box in the pots. Many autumnal plants can be grown in containers. Recycled pots can add a personal, quirky touch to your garden and are good for the environment, too. Anything that can hold compost can be used – tins, wine boxes, colanders, old washing machine drums, colanders, chimney pots, even old boots can be transformed into planting vessels, providing some drainage holes are drilled into the base.

The most important lesson about autumn garden colour

I feel I've learned a very important lesson about autumn garden colour. You don't necessarily need to plan it. All you need to do, when choosing plants for spring or summer, is to check what their autumn foliage is like too. Given the choice between a peony with good autumn foliage and one without, all other things being equal, you can get two seasons for the price of one.



Clockwise: Cornus Midwinter Fire; Viburnum Bodnantense; Guelder Rose; ornamental grasses; the parterre with Panicum virgatum 'Shenandoah' and topiary box; Hydrangea Quercifolia Snow Queen.





EVERGREEN LANDSCAPING

All aspects of landscaping work undertaken:

- Decking, patios, fencing
- Driveways, block paving, brick and stone work
- Ponds, planting and more.

All finished to a high standard at competitive prices.

Phone Lee 07799103112 / 01227 264482

For a free quotation or visit www.evergreengardenskent.co.uk



Old English Tools



Bench planes, chisels, felling axes, bill hooks, froes, draw shaves, side axes, early garden tools, blacksmith tools, pine boxes. Cast iron log burners and fire grates.

Tools old and new bought for cash. Workshops cleared.

Essential business with restrictions.

Faversham Standard Quay, ME13 7BS

BLACKSMITHS' ANVILS WANTED

Call Phil on **07796 343722 / 07850 292523**

www.countryclobberltd.co.uk



IRONWORK : JOEL TARR : SCULPTURE



BESPOKE GATES, RAILINGS, SCULPTURE, HOUSE SIGNS
WWW.JOELTARR.CO.UK 07714631202 JOEL@JOELTARR.CO.UK



COUNTRY CLOBBER



Country Inspired Accessories



Standard Quay, Faversham ME13 7BS sales@countryclobberltd.co.uk
Tel: 07850 292523 • Web: www.countryclobberltd.co.uk

Finding the perfect fireplace

FOR YOUR PERIOD HOME

Don't you just love spending a cosy evening curled up by the fire? As the nights draw in, many of us retreat to the fireside to bring a little cheer to the grey skies, and having the right fireplace to suit your home can make or break the 'hygge' factor in your property.



*Chesneys Shoreditch multi-fuel stove,
The English Chimney Piece*

For many period homes, the fireplace is and always has been a key feature. It's possible therefore that yours is an original, or at least a sympathetic reproduction. However, if you've recently moved into a house with an original fireplace, or if you've simply never got round to paying yours much attention, it may be that it's in need of some TLC.

MAINTAINING YOUR FIREPLACE

Original fireplaces in older properties are often cast iron, as these first became popular in the mid-19th century, thanks to their superior heating properties (prior to what we think of as a fireplace, domestic heating was usually by way of an iron 'basket' on legs, which did little to heat the home and was a great producer of smoke).

Carron fireplace, Whitstable Stove Shop



Unfortunately these are often poorly maintained and even painted over, but bringing them back to their former glory may simply be a case of stripping back old paint, cleaning the iron with white spirit and bringing back the shine with black grate polish (remembering not to use water in the cleaning process, as cast iron can rust on exposure to moisture). If your fireplace is beyond a simple refurbishment, then contact your nearest fireplace company for advice because, as with any original feature, great care should be taken with extensive refurbishments.

REPLACING YOUR FIREPLACE

If, however, your fireplace is beyond repair, then you have 3 choices:

1. Source an original antique fireplace
2. Install a replica cast iron fireplace
3. Opt for something entirely different (more on that later).

Sourcing an original can be a tricky task. Your first step should be to hunt out old photographs of your property to get an idea of what you're looking for, or speak to any neighbours who still have the originals in their homes to better understand the styles you're after. Antiques dealers are probably your best bet for sourcing the fireplace itself, but specialist fitters may be required to make sure the installation is both authentic and up to code.

You can quite easily maintain the desired aesthetic without going antique however, as many fireplace showrooms offer fantastic period style fireplaces made brand new!



Valor Inspire Stove M, Adena Fires

In fact another consideration, and one that can be made far simpler with a modern reproduction, is whether you actually want to keep your wood burning fire or replace it with a gas or electric version. Ideally we'd probably all like the roar of a real fire to snuggle up to, but with some parts of the UK now designated Smoke Control Areas it may be impossible for you to use certain combustibles. If you're concerned about this, then contact your local council for guidance.

Having said that, a gas or electric fire can look great (or grate!) within a traditional surround so if, for any reason, you decide against a wood burner, it really isn't the end of the world.

ALTERNATIVES TO CAST IRON

Of course not every period home has, or suits a cast iron fireplace. Many 19th and early 20th

century homes favoured stone or wooden fireplaces and these, whether originals or replicas, can be absolutely stunning.

For example, both the Georgian and Victorian periods were marked by a love of extravagance, and fireplaces were the perfect focus for this opulence. Skilled craftsmen were employed to carve elaborate stone or marble designs of such outstanding beauty that the original patterns and moulds are often still used today. One look that dominated in the first half of the 18th century was the Palladian style, which was heavily influenced by Graeco-Roman architecture. With scale columns and delicate fluting, often rendered in marble, these fireplaces are perfect in Georgian homes, particularly ones that have large and centrally located hearths.

Another popular style, and one more suited



Charnwood stove, Whitstable Stove Shop



*Dartmoor Baker Plus W5 Eco wood burning stove,
Dean Forge from Wingham Woodburning Stoves*

to newer period homes, is the classic Art Deco look. Usually constructed on a fairly simple wooden framework, Art Deco fireplaces were all about the tiles, with their distinctive geometry and bold colours epitomising the lavish aesthetic of the early 20th century.

WOOD BURNERS

If your old fireplace has been boarded up, your interior layout is much changed or you would like a wood fire without worrying about your carbon output, then a wood burner may be the best option for you.

Unlike traditional fireplaces, wood burners can be placed almost anywhere in a room and the right model can be far more compact, without losing the wonderful warmth of a real fire.

New wood burning stoves are fully compliant with the latest clean air legislation and give off maximum heat with minimum

fumes, so make sure that you go to a reputable installer for your product. The new technology employed in these models is so good that it often complies with the requirements of Smoke Control Areas, but again it's best to check with your local council before going ahead with your purchase.

SURROUNDING DÉCOR

Finally, an original fireplace or authentic wood burner is as much about style as it is about performance, so make sure that the surrounding décor hits the right note. Consider the period of the fireplace itself and choose a design scheme to match. If you're lucky enough to have an inglenook, make it a cosy and welcoming space that matches and enhances the period feel of your fireplace.

We recommend adding a hot chocolate, a slice of cake and a copy of Conservation News to finish off the look, but that might be just us.



Dru cast iron multi-fuel stove, Adena Fires

Wingham
Woodburning Stoves



*Come and visit our showroom
or visit our website*



Little Crockshard Farm Shop, Crockshard Lane, Wingham, Nr Canterbury.
CT3 1NYT Tel: 01227 728130 www.winghamwoodburningstoves.co.uk



Whitstable Stove Shop

LOG BURNING * MULTI-FUEL * CAMP COOKING



2 Saddleton Road, CT5 4JB Tel: 01227 266209
whitstablestoveshop.co.uk

NON FERROUS METAL RECYCLING & WASTE HANDLING

JOHN BUTCHER BROS **TEL: 01227 713850**

- Fast efficient turnaround
- Immediate cleared funds via BACS
- Collections available for larger quantities

CALL FOR CURRENT PRICES

Open to the public & trade

Mon – Fri, 8am - 5pm

Sat, 8am - 12 noon

www.johnbutcherbros.co.uk
info@johnbutcherbros.co.uk



**We pay competitive prices for
all the following grades:**

- Copper • Brass
- Lead • Copper tanks
- Aluminium • Cables
- Stainless steel
- Silver • Gold



Unit 12, Canterbury Ind Park, Island Road, Hersden, Canterbury CT3 4HQ



HOW TO...

RESTORE A CAST IRON FIREPLACE

- If you can remove the fireplace from its place in the wall, this will make your job easier. If not, make sure you put down protective sheeting as the job can get messy.
- Remove any old paint. Don't try to burn it off with a blowtorch, as cast iron is brittle and can crack easily. Use a paint stripper to remove the paint. Make sure you wear protective gloves, goggles and old clothes, and ensure the room is well ventilated.
- For intricate bits of detail, a stiff nylon brush will be of help.
- Clean the fireplace with a cloth soaked in white spirit once you've got the paint off. Don't let water get anywhere near the cast iron or it will start to rust quickly.
- If there is any rust on the fireplace, use wire wool to clean it off.
- Once your fireplace is restored back to its original state, you need to decide whether to paint or polish it. Whatever you choose to do, make sure you buy the right stuff to do it with. Grate polish can be applied with a rag, or if you prefer a burnished look, you can use WD40.
- If you are planning to paint the fireplace, give it a coat of red oxide first to prevent rusting. Buy a specialist paint, available from most DIY shops.
- If your fireplace is likely to be exposed to cold air at all, then a coat of iron paste or black lead can be applied, which will protect it. This can be buffed to a polished finish.



SCRAP METAL RECYCLING

Polite & friendly service

Fully licensed

Clearance of all metals

Unfortunately we cannot take fridges or freezers

Jason 07840 081990

7 days a week

Wells & White Bespoke Upholstery



Modern, traditional & bespoke |
upholstery services.

Learn upholstery classes.
Enrolling now for September.

07999 604250

www.wellsandwhite.co.uk

wellsandwhite@outlook.com



THE ANTIQUES STORE



4 High Street, Snodland, Kent ME6 5DF • Open 7 days a week 10am - 4.30pm



We provide full or partial house clearance services

Please contact: 07555 645217 email: theantiquesstore@gmail.com

BAGHAM BARN ANTIQUES & INTERIORS

Canterbury Road (A28) Chilham Kent CT4 8DU

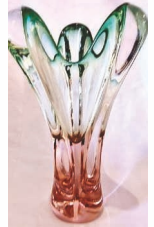


Tel: 01227 732522 | www.baghambarnantiques.com



21ST ANNIVERSARY YEAR

Open Thursday, Friday, Saturday from 10am-5pm and on Sunday from 10am-4pm.



RI'S TEAROOM

Serving freshly prepared
delicious food inside or
in the garden



STILL ON TREND AT THE BARN

BAGHAM BARN ANTIQUES HAVE SOMETHING TO CELEBRATE
AND ARE INVITING CUSTOMERS TO HELP THEM DO JUST THAT.

It's their 21st anniversary and, as if that wasn't enough to shout about, they recently hosted the Antiques Road Trip TV crew for an episode which will be aired later in the year. They are sworn to secrecy over the celebrities involved this time but have previously welcomed Joe Pasquale and Peter Andre, who were 'incredibly entertaining' – it has been a privilege

over the past 12 years for Bagham Barn to be selected to host these shows on site.

Back in 1999, Peggy and Roger began the painstaking task of restoring the 17th century barn at Chilham, making the most of its exposed beams and brickwork, vaulted high ceilings, old hop press and grand oak staircase.

They then opened it to traders offering

an unrivalled choice of quality antiques, collectables, decorative vintage furniture, restoration services and more. Some of the dealers have been at the Barn since the beginning. There's also a tearoom, on-site beauty studio, bridal boutique, hairdresser and speech therapist.

The Barn is open Thursdays, Fridays and Saturdays (10am-5pm) and Sundays (10am-4pm), and the large free car park is handy for loading purchases.

The anniversary is very special to Peggy, Roger and the traders, having in 21 years weathered market crashes, Black Fridays, storms which dislodged roof tiles and uprooted fences – and then survived the pandemic.



Customers new and old are invited to join them at The Barn on Thursday 13th October from 2pm onwards.

Interestingly the traders say that, with the trend for working from home, customers are showing an ever-greater interest this year in upgrading interiors and buying furniture, lighting and garden items. The Barn's reputation for quality, professionalism and service is such that even dealers come to shop there. The online catalogue is well worth a browse, but it's better still to pop along in person! If you would like to join Bagham Barn's mailing list to receive newsletters and details of future events please email peggy@baghambarnantiques.com. Visit: www.baghambarnantiques.com



Gary Miller

PAINTER & DECORATOR



30 years experience specialising in period & country properties across Kent. References available.

24 High Dewar Road, Rainham ME8 8DN

Tel: 01634 235773 or 07971 871433 garymillerdecorator@gmail.com



Established 1988



DOMESTIC CLEANING SERVICES LTD

Regular or One-off Cleaning

Homes and Holiday Lets

End of Tenancy

Moving Cleans

Spring Cleans

Professional, Friendly, Reliable Service

CALL US NOW FOR A FREE QUOTATION

Tel: 01227 277033 | www.supermaids.co.uk | info@supermaids.co.uk

We have a lovely new range of
fabrics/materials now available



CGS BLINDS & SHUTTERS LTD

Come and visit our showroom

• Huge choice • FREE quotations

Tel: 01227 278643

146 Tankerton Road, Whitstable CT5 2AW

www.cgsblinds.co.uk



Find us on Facebook

How to create the perfect **GALLERY WALL**

Photos: www.gemmalouise.co.uk



A gallery wall is a curated display of photographs, posters or prints, creatively arranged on a wall using photo frames. They have become very popular over the last few years, providing an easy way to update your interiors, transform bland walls, create a focal point in your home, and bring some character and personality to your living space. Instead of using paint or wallpaper for a feature wall, you can do so with a gallery wall, and it can be placed anywhere in your home, although popular areas are often in the hallway, up the staircase or in the living room.

There's no right or wrong way to create a gallery wall. Clashing prints and frames can look incredible. However, we advise trying to stick to one type of frame/colour. If your gallery wall is large, don't buy six black frames and one gold one, buy five black frames and a couple of gold ones to mix in between the black ones. In terms of prints, choosing a couple of different styles works well, or just sticking to one style, but again, clashing ones look great too. A mixture of photographs and illustrations, or just a gallery wall that's made up of all abstract/illustrative prints is a good starting point. You could pick a few different types of artwork

but it works better to choose a couple from each style as it's easier to create a layout with them.

Arranging the layout is the most important thing. Whether you have an assortment of completely different prints and frames, or they all tie in together perfectly, they won't work well if the layout isn't on point.

Find the harmony between posters and frames

If you have different styles and colours on your poster motifs, it is recommended to focus on uniform frames to create a harmonious impression. If you have motifs in one style, such as only black and white posters, you may want to mix frames of different varieties. For example, it looks great to combine black and white wooden frames.



Top tips for layout arrangement

- Mix up the sizes, don't put prints that are the same size all next to each other, shuffle them around and put smaller ones in between them, above and below them, etc. If you have an assortment of prints and frames, try and mix up the frames and colours so that it looks more shuffled.
- Decide how big you want the gaps to be whilst your gallery wall is laid out on the floor. It's

absolutely vital to have an equal gap between all prints regardless of what kind of gallery wall you're putting up.

- When you're ready for your gallery wall to go up, there's a couple of tips and tricks that will work wonders for getting it accurate. Some heavier frames do require a screw, but try to work with nails where possible they're so much easier to easily adjust. You can move them over an inch or so fairly easily.





Back-lit dark blue hut warm light, £1,100
www.fairfaxgallery.com



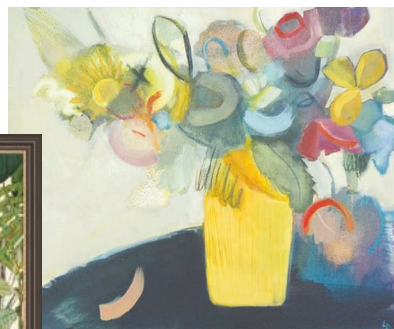
Stornaway, £255
lenleys.co.uk



The wedding dress, original painting framed oil on board by Cathy McClymont, £260
www.anthonysawardgallery.co.uk

Gallery walls

...CREATE YOUR OWN



Saffron oil on canvas 50 x 60cm £1,400
www.fairfaxgallery.com



Bouquet of Flowers, original painting, oil on canvas by Cathy McClymont, £360
www.anthonysawardgallery.co.uk



Exotic jungle, £109
lenleys.co.uk



Kumo Framed Art Set of 2, £179,
www.lukehurst.co.uk



Feathered Friends unframed canvas, £109,
www.lukehurst.co.uk



Scandinavian^{touch}

Step into autumn Scandinavian style. We have lots of NEW bags, storage ideas and planters to complement your space. Pop in, have a browse and be inspired.

Opening times:

Monday - Friday & Sunday 11am to 4pm
Saturday 10am to 5pm



66 Oxford Street, Whitstable. CT5 1DG

www.scandinaviantouch.co.uk | shop@scandinaviantouch.co.uk

Save on your home insurance



Insurance for all types of homes including:

- High Value Homes
- Property Undergoing Renovations
- Non-Standard Construction
- Listed Buildings

gsi-insurance.com

GSI Insurance Services (Southern) Ltd
118 John Wilson Business Park
Whitstable
Kent
CT5 3QY

Tel: 01227 772 775

Your local broker has it covered

The Antique Oak Flooring Company

SPECIALISTS IN ANTIQUE AND RECLAIMED FLOORING



VIEWING BY APPOINTMENT

Willow Court Farm, Bilsington Road, Ruckinge, Ashford, Kent TN26 2PB

T: 01233 659508 M: 07733 263540 www.antiqueoakflooring.com

Scandinavian Touch

Scandinavian Touch, an upscale, boutique homeware store in Whitstable, offers products that embody the naturalistic, chic and functional ethos of our friends in Northern Europe.





only in its aesthetic, but also in its emphasis on functionality. Objects should be usable as well as good looking so that no space is unadorned and no space is wasted.

In addition to being a retailer and design studio, Scandinavian Touch is also a UK brand agent for Dutch ethical company Handedby (which they also stock), and assists other retailers who wish to sell the company's beautiful handmade and recycled bags, baskets and storage items.

Scandinavian Touch even stocks exclusive furniture from ygg&lyng, one of Norway's most sought after brands, making it a favourite with interior design aficionados.

This little gem on the edge of Kent is high class, high quality and highly desirable, but with offers that can also make it highly affordable. Whether you go online or in person, Scandinavian Touch is well worth a visit for house- proud homeowners and lovers of all things Scandi.

Visit www.scandinaviantouch.co.uk

From comfortable furniture to elegant lighting and kitsch ornaments, the emphasis in this emporium is on the 'different'

If you want your home to stand out and feel unique, then you want products that are different: difficult to find, hard to copy and completely YOU.

The quality of these items is easily discernible even if you can't make it into Whitstable – just take a look at the store's website (and online shop) and you'll see a plethora of reviews that attest to the diverse and delectable nature of Scandinavian Touch's offering.

The key to the boutique's success lies not





Flooring

DESIGNS



- Luxury vinyl tiles
- High quality carpets
- Cushion vinyl
- Laminate flooring
- Real & engineered wood
- High quality installation

Family-run business offering first class service

64-65 High Street, Wingham, Canterbury, Kent, CT3 3BJ
Tel: 01227 721 938 or 07808 667369 www.redflooring.co.uk



CHOOSING TILES *for your home*

CHOOSING THE RIGHT TILES CAN BE A LITTLE DAUNTING,
SO HERE'S A QUICK GUIDE TO GET YOU STARTED...

Tiles are wonderfully versatile: from floor to walls, indoor to outdoor, wet room to front room, tiles are a durable and attractive covering that can really bring new life to your home.

WHERE ARE YOU TILING?

The first thing you need to consider is, of course, where your tiles are going. It seems obvious, but if you fall in love with a tile for

your floor only to realise it's a wall tile, it can be a real headache!

Floor tiles are far stronger than wall tiles of course, but even these can vary, so think about the amount of traffic you're expecting them to have to deal with: will they be subjected to muddy shoes, running kids and scampering pets in the hallway? Or will they be reserved for the occasional barefoot visitor in the guest bathroom?



Stone Tile Warehouse



Rock Unique

Are these tiles going to be indoor or outdoor? Or are they going right through from one to the other? Our expert friends at Rock Unique tell us that the connection between indoor and outdoor needs to be carefully planned and ordered to avoid a haphazard and messy aesthetic.

Additionally, if it's wall tiles that you're after, will they want to be dark and decorative or pale and plain? Similarly to floor tiles, the colours, textures and laying patterns of your wall tiles should be carefully selected to create continuity.

What material should you use?

Your choices for tiling are porcelain or ceramic. Ceramic tiles are easier to cut and drill, which will be reflected in the installation price, but they are not as strong as porcelain. Ceramic tiles are also graded to show whether they are suitable for domestic or commercial use, and this is a good indicator of how durable they will be. Although ceramic tiles can be really beautiful, if it's a hard wearing and long lasting investment that you want, it's definitely worth opting for porcelain.

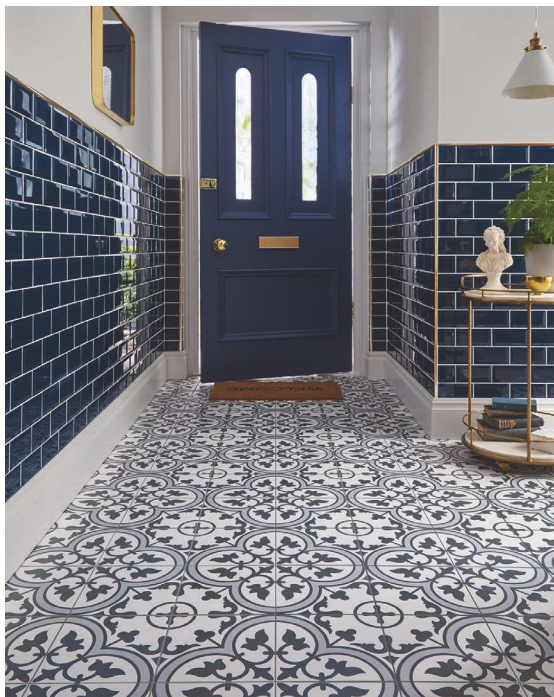
Porcelain tiles are stronger because they are denser, which also means they will not soak

up water. This makes them ideal for kitchens and bathrooms, but also for outdoor use, because they won't freeze and crack in the winter.

Porcelain can also be supplied in large format for bigger areas, both indoor and outdoor, and Rock Unique have had fantastic success blending indoor and outdoor porcelain to create garden rooms and other eye-catching features.

WHAT STYLE DO YOU LIKE?

If you prefer sympathetic décor in your period home, then a rustic or 'vintage' style is going to work for you. However, just because your home is old, doesn't mean your aesthetic needs to be! Some of the best effects are created by blending contemporary tiling with antique surroundings.



Walls and Floors (wallsandfloors.co.uk)



Hyperion Tiles (hyperiontiles.co.uk)

Think clean, large porcelain tiles leading from your conservatory onto your patio; the fresh, smooth, modern visuals juxtaposing the dark timber and low ceilings.

WHAT COLOURS WILL WORK?

When choosing colours, don't just try to coordinate with existing tiles – think of the room as a whole. There are some basic points to consider of course: pale tiles will make the room seem bigger and lighter, but will show the dirt more (muddy paw prints will need wiping away from a white tile every half hour in winter!). Dark tiles will negate this problem but can close in smaller areas.

It's important to go for something that will stand the test of time (especially if you think you might consider selling in the future), but you mustn't let practicality get in the way of what you really want. Tiles, wall tiles especially,

come in myriad colours and designs, so if you want to make a feature of them then go for it!

WHAT SHOULD YOU DO NEXT?

When it comes to period homes, tiling should not be a DIY job! Sloping floors and wonky walls require an expert fitter and a good quality tile.

We asked some of our trusted suppliers what they recommend and top of the tiles were:

Bert & May, who offer handmade tiles in curated colours and are stocked by local company De Wiit:-

Atlas Concorde: high quality Italian porcelain that are slip resistant, anti-stain and extremely durable. These are available from Rock Unique. Whatever style or material you choose, remember that your home deserves the best, and high quality tiling can make a world of difference.





MARTIN SHIRLEY

Bathroom & Home Renovations

Specialising in bathroom renovation, including tiling, plumbing and decorating. Also home maintenance and renovation undertaken within the mid-Kent area for over 15 years.

Free quotations available

All work fully insured

Tel: 07565 843931

E: martin10.shirley@gmail.com

Aviva Stone, Granite and Quartz worktops

LARGE SHOWROOM NOW OPEN

Granite

Quartz

Marble

Slate



**FIRE HEARTH
MADE TO ORDER**

Court Lodge Farm,

Frog Lane,

Bishopsbourne,

Canterbury CT4 5HR

Tel 01227 678007

or 07976 893646

avivastonegranite@gmail.com

Aviva Stone
South East Ltd
GRANITE & QUARTZ WORKTOPS

www.avivastonegranite.co.uk

SOUTHGATE ELECTRICAL CO. LTD
The Best Electrical Services
 Offering a full range of electrical services
 from design to installation

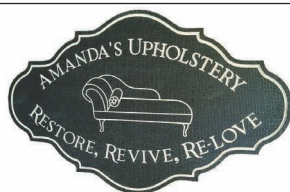
- External Electrics
- New Builds
- Access and Security
- Space Heating
- Electric Showers
- Fire Alarms
- Landlord Certificates

T: 01227 712790 / 07889 895394
 www.electricians-canterbury.com

APPROVED CONTRACTORS

WAREHAMS
 Antique Garden Ornament · Gustavian Furniture

68 Oxford Street - Whitstable CT5 1DG
 Mobile : 07831 210139
 www.warehams.com



RESTORING ELEGANCE TO YOUR CHAIRS



Traditional upholstery crafted with care

Tel: 07799 097740

By appointment:
 4 Nutberry Close

amandasupholstery@gmail.com
 www.amandasupholstery.co.uk

Teynham
 Sittingbourne ME9 9SP

• Wired & Wireless Intruder Alarms
 • CCTV Systems
 • 24hr Monitoring
 • Security Lighting

CACTUS SECURITY

COMPLETE HOME SECURITY SOLUTIONS

Proud members of
checkatrade.com
 Where reputation matters

SSAIB
 CERTIFICATED

CHA
 Accredited Contractor

ISO 9001:2015
 COMPANY

Verity at southg

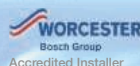
01227 365000
07958 180621

info@cactussecurity.co.uk www.cactushomesecurity.co.uk

Ed Parry Plumbing & Heating

Installation, Servicing & Repair

- Boilers
- Cookers
- Central Heating
- Bathrooms
- Power Flushing
- Showers



Landlord gas safety certificates

01227 266236 • 07976 925224
 ed.parry@me.com
 www.edparryplumbingandheating.co.uk

CACTUS SECURITY

CCTV / INTRUDER ALARMS / CHURCH ALARMS AND CAMERAS
SCAFFOLD ALARMS & CONSTRUCTION SITE SECURITY



If you've spent time and money making your house into a home, the last thing you want is for that home to be targeted by thieves.

Cactus Security have over 17 years' experience in the end to end management of both domestic and business security systems and can make sure that your property has the best possible protection against criminals.

Working throughout London and the South East, Cactus Security are fully accredited by the SSAIB, and CHAS, and have ISO9001

certification, as well as a near perfect score on popular site Checkatrade.

The team at Cactus Security can advise you on the best system for your home, install everything you need and ensure that everything runs smoothly for the duration of your contract, thanks to their 24 hour service line.

They are particularly known for their top quality, Grade 2 equipment; including state of the art CCTV systems, which can not only deter criminals, but can also help in the solving of crimes should the unthinkable happen.

If you need a dependable and knowledgeable service from experienced professionals, you can rely on Cactus Security to protect your home and your peace of mind.

Please visit:

www.cactussecurity.co.uk

Email: info@cactussecurity.co.uk

cactussecurity.co.uk

Tel: 01227 365000



Anderson footstool, £219,
cultfurniture.com

Art deco decanter, £55,
rocketstgeorge.co.uk

Blanket, £89,
heating-and-plumbing.com

Pink candle, £8.49
giselagraham.co.uk

Anglepoise lamp £219,
johnlewis.com

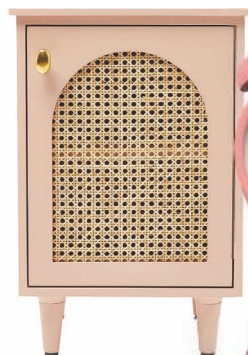
Lenny Leather Swivel & Rocking
Armchair + Footstool, £1640
londonroadfurniture.co.uk

Set of 4 Denby cereal
bowls, £66, johnlewis.com

Clarisse vintage style jug,
£24.95, thewisteriatree.co.uk

Lifestyle

INSPIRING IDEAS FOR YOUR HOME



Bedside table, £235,
oliverbonas.com



Alarm clock, £24.95
annabeljames.co.uk

Ombre glass vase, £38,
lenleys.co.uk



Eva bowl, £85,
scandinaviantouch.co.uk



Pink meadow mug, £8.50,
quinceandcook.co.uk



Pooky Wilma lamp £52, shade £53,
oohhowlovely.co.uk



Oscar cushion, £65,
sweetpeaandwillow.com



Candle, £8.49,
giselagraham.co.uk



Set of 4 tumblers, £60, oka.com



Peony stem, £15,
neptune.com

Barlette chair, £599,
lukehurst.co.uk



Tinkisso colour pop kitchen
tap in miami pink £139.99
dowsingandreynolds.com



Victoria Tale wallpaper,
£120, juliabrendel.com



Capiz shell tealight holder,
£13.50, thewisteriatree.co.uk



Wedgwood teapot,
£100, johnlewis.com



Pink paint from £19,
oohhowlovely.co.uk

Vase, £25,
thehappyblossoms.com



Haden toaster £62
Copperfields of Whitstable



Framed print, £75
cultfurniture.com



Tigress cushion, £85,
avalanadesign.co.uk



Velvet quilt, £225, loaf.com



Haresfield sofa, £3064 (at time of going to press
sofasandstuff.com



Pink candles, £14
rockettstgeorge.co.uk



Kitchen tools from £10.50
Copperfields of Whitstable



Haden kettle £58
Copperfields of Whitstable



PJ ARCHITECTURE

Harbour Offices, Whitstable CT5 1AB

01227 770470

enq@peterjacksonarchitects.co.uk



HERITAGE PAINT REMOVAL AND CLEANING LTD

BRICK AND STONE CLEANING SPECIALISTS



BEFORE

AFTER

DOFF INTEGRA PROFESSIONAL CLEANING

- ✦ ENGLISH HERITAGE APPROVED
- ✦ REMOVES PAINT & POLLUTION
- ✦ CHEMICAL FREE & QUICK DRYING
- ✦ NON HARMFUL TO ALL MASONRY



INFO@HERITAGEPAINTREMOVAL.CO.UK

T: 01227 264 737 - M: 07812 590 888

WWW.HERITAGEPAINTREMOVAL.CO.UK

OLIVER MANNING PRESS

CABINET MAKER, FURNITURE DESIGNER, FURNITURE RESTORER,
BESPOKE FURNITURE MADE TO ORDER - FREESTANDING OR FITTED



For more information contact: **01227 731765** or **07808 001844**

www.olivermanningpress-bespoke.com olivermanningpress@gmail.com

The
Canterbury
Auction
Galleries

FINE ART
AUCTIONEERS
SINCE 1911

40 Station Road West
Canterbury
Kent, CT2 8AN

We Are Actively Seeking Consignments

of Fine Art & Antiques, Silver & Jewellery, Objet d'Art, Coins & Medals
Clocks and Watches.



The Canterbury Auction Galleries is Kent's premier Saleroom for Fine Art and Antiques with an International Reputation Dealing with the Valuation and Sale of a Single Treasured item through to the Complete Contents of a Country Estate.

Bi-Monthly Two Day Specialist Weekend Online Auctions of Fine Art & Antiques, Silver & Jewellery
Objet d'Art, Coins & Medals, Clocks & Watches
Antique Furniture and Toys.

Please Visit Our Website for More Details
thecanterburyauctiongalleries.com

Call Us to Book a Valuation Appointment at Home or at Our Saleroom in Canterbury. All Appointments are subject to current social distancing guidelines.

Please Contact;

Cliona Kilroy MRICS - Director

Dave Parker BSC (Hons) ASFAV - Managing Director

Telephone: **01227 763337**

email: general@tcag.co.uk



01795 521650

60 London Road

Teynham

nr. Sittingbourne

Kent ME9 9QM



WINDOWS | DOORS | STAIRCASES | CONSERVATORIES & MUCH MORE

www.fjwilliamsjoinery.co.uk

info@fjwilliamsjoinery.co.uk



Established in 2006, Kent Sash Windows Ltd has specialised in the repair, replacement, draught-proofing and double glazing of traditional sash windows throughout Kent and London.



Kent
Sash Windows Ltd

"Restoring the Original, Beautiful features of your home"

Call us today:

0800 012 6038

www.kentsashwindows.co.uk

Making the most of your WINDOWS

WINDOWS AREN'T SIMPLY A FUNCTIONAL ITEM, THEY ADD CHARACTER TO A BUILDING; AND DIRTY OR DEGRADED WINDOWS CAN RUIN THE LOOK OF YOUR PROPERTY.

However, when living in a period home, it can be somewhat daunting to address the state of your windows because of the myriad facets involved: how can I avoid damage to the property? Will new windows be in keeping with the aesthetic, do I need special permission to change things?

Well here at Conservation News, we've put together a brief guide to renovating and replacing windows in historic and period homes. We always advise speaking to a professional before attempting any changes, but hopefully this article will help you narrow your focus and get the windows your home truly deserves.

PRESERVING YOUR EXISTING WINDOWS

There are a few companies in Kent that specialise in period windows, and these businesses will be able to help with larger restoration jobs. However, if your windows still have some life in them, or if you use our article to help you choose new ones, there are certain small maintenance jobs that you can do to significantly prolong their lifespan.

Repaint: regular repainting or re varnishing helps stop timber from swelling and rotting, and keeps your windows looking pristine. Aim to re-cover at least every other year, and don't

forget to give them a good rub down first.

Oil: hinges, sashes, locks and catches all need regular oiling to keep them operational. You can also use beeswax on sashes to keep them running smoothly.

Putty: window putty has a finite lifespan and can become dry and flaky, especially with regular exposure to strong sunlight. Remove old putty with a scraper and let it dry before priming and replacing the putty.

GETTING NEW WINDOWS

Inevitably your windows will 'give up the ghost' and need replacing. If repair is not an option, then you need to think long and hard about what you choose as a replacement. The techniques used to make windows in the past are long gone today, and building regs can prohibit close copies, but that doesn't mean you can't get beautiful, sympathetic replacements.

Although it is possible to get 'off the shelf' windows for period homes, it is by far a better option to go bespoke, in order to preserve the aesthetic and value of your home. With bespoke windows you can specify modern features such as double glazing, without compromising on looks.

PLANNING PERMISSION

Unfortunately the question of whether or not you require planning permission to replace your windows is not a straightforward one.



Above: FJ Williams Joinery
 Above left: Acorn Glassline
 Left: FJ Williams Joinery
 Below: Rio flush fit windows by rehau.com, Acorn Glassline



Whilst you will generally not need planning permission, you will need to look at the legislation as pertains to your particular property. In some historic houses permitted development rights can be restricted, and in conservation areas, you may be subject to rules regarding the type of windows you can get. Obviously if your home is a listed building you will require permission, and you will need to be able to prove that your existing windows are damaged beyond repair.

Although new box sashes and casements fitted into existing frames are classed as refurbishment and require no planning permission per se, it is now the case that listed and historic buildings demand sympathetic replacements, meaning that you will need to have them made by a specialist joinery company.

BUILDING REGULATIONS

Any new windows must be installed by a FENSA registered company and details from the old windows, such as vents, will need to be replicated or replaced with a suitable alternative (your installer will be able to advise you). You will need to keep a copy of your FENSA certificate, particularly if you intend on selling the house at any point.

Ground floor windows must contain safety glass and need to have the relevant safety mark on them (although this shouldn't really detract from the overall look).

For listed buildings there can be some leeway in terms of the U-value of the windows (the measurement of the amount of heat that's allowed to pass through the glass), but these values are generally fixed in non-listed buildings.



Kent Sash Windows

DIFFERENT STYLES OF WINDOW

Within period homes glazing can be extremely important, as 'flawed' glazing and/or stained glass will help add to the home's unique character. Again you may wish to replace existing panes with a sympathetic alternative, so speak to an expert glazier. In older homes windows tended to be very small, as the technology to produce larger panes had not yet been discovered. In this case you will definitely want tailor made replacements.

Many period homes have side hung casements made of wood or metal, which swing open. Another popular style is the vertical sliding or box timber sash; a familiar sight in slightly newer homes, although earlier models



Above: The Window Sanctuary

Below: KSE Windows

may be held open by pegs instead of weights and pulleys.

MEDIEVAL AND TUDOR WINDOWS

In this early period, glass was still very expensive and rural properties often simply had openings that could be covered with shutters. If you live in such a property then the chances are that your panes are not original, which can give you a little more flexibility in terms of replacements. Where glass was used, it was typically in metal frames.

GEORGIAN AND VICTORIAN WINDOWS

Georgian windows tended to use vertical sliding timber sashes, with 8 over 8 or 6 over 6 pane





The Window Sanctuary

configuration. Meanwhile Victorian homes often had box sash or casement windows, usually of timber construction. The Victorians were also very fond of mock-Tudor windows, with leaded lights between stone ‘mullions’ (vertical struts).

EARLY 20TH CENTURY WINDOWS

After the war, double glazed windows tended to be used, and many single glazed windows in older buildings were ripped out and replaced with double glazing. As many of our existing historic homes were built in the 1930s, you will often find ‘Crittall’ style windows (a simple, black, multi-panelled frame) or even the more elaborate Art Deco style.

WOODEN AND METAL FRAMES

When striving for authenticity, wooden and metal frames as a homeowner’s best friend. They offer versatility in terms of style and can be created to mimic the home’s original windows. Hard and soft wood can be used (the most obvious difference being that soft

wood is more cost effective in the short term, whilst hard wood lasts longer). Contrary to popular belief, modern metal windows provide excellent thermal efficiency and are generally low maintenance.

UPVC AND COMPOSITE WINDOWS

In years gone by it was difficult for owners of period properties to replace their windows with long-lasting, energy efficient, double glazed options without spoiling the appearance of their homes. Fortunately those days are long gone with companies offering aesthetically pleasing options that will complement the look of your unique home, but with all the modern-day benefits of uPVC windows. Victorian, Georgian, period cottage, there is a superior quality period style uPVC window option to suit. With the added benefit of being durable and extremely energy efficient, uPVC and composite doors should not be immediately dismissed by period homeowners.



HERITAGE BRICKWORK RESTORATION LTD

‡ Lime Mortar Specialists ‡

‡ Historic Brickwork Repairs ‡
& Repointing

‡ Gauged Brickwork ‡

Tel: 01227 264 737 Mob: 07866 388 962

info@heritagebrickworkrestoration.co.uk

www.heritagebrickworkrestoration.co.uk

Anthony Swaine ARCHITECTURE LTD

Conservation • Design Consultancy • Listed Buildings
Urban Design • Joinery Detailing • Traditional Shopfronts

**Initial consultation undertaken
free of charge**

**Specialising in traditional design & works to
historic buildings; timber framed structures; &
new buildings in the historic context**

The Bastion Tower,
16 Pound Lane,
Canterbury,
Kent CT1 2BZ

Tel: 01227 462680
mail@anthonyswaine.co.uk
www.anthonyswaine.co.uk

**CONSERVATION
CONSTRUCTION**

CONSERVATION-CONSTRUCTION.CO.UK

- Ecclesiastical work
- Flint work
- Heritage brickwork
- Lime pointing/render
- Fully insured
- New builds & extensions
- All work quoted for
- Traditionally trained craftsmen

Tel: 07856 266795

e-mail: conservation-construction@outlook.com



RESTORATION & CONSERVATION

SERVICES

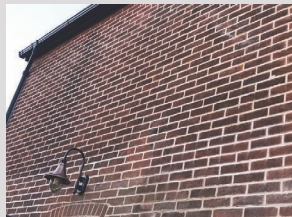
- Lime mortar pointing
- Brick and stone replacement
- Structural crack repairs & remedial wall ties
- Natural damp proofing
- Professional brick and stone cleaning
- Render removal to allow masonry to breathe



ABOUT US

Prestige Brickwork is a Canterbury based restoration company that specialises in the conservation of period properties throughout Kent. We offer all types of expert brickwork repairs and repointing. We are specialists in working with lime mortar.

All of our staff members are fully committed to providing you with a stress free service. Our tradesmen are professional and are experts in bringing the beauty of your home back to life.



Tel: 01227 908563 or 07954 409840

www.prestigebrickwork.co.uk

[email: prestigebrickworkkent@gmail.com](mailto:prestigebrickworkkent@gmail.com)



SPECIALISTS IN ROOFING



Canterbury Roofing and Building is a family-run business with over 35 years' experience working in Kent and surrounding areas. We have vast experience of conservation and other roofing works.

- Guttering
- Flat roofing
- Velux and sky lights
- Conservation work
- Tiling
- Pointing and chimney work
- Slating
- Lead work



**FOR MORE INFORMATION
AND TO CONTACT US:**

www.canterburyroofing.com

Tel: 01233 647867

or 07976 325520

info@canterburyroofing.com

EMPLOYED SKILLED WORKFORCE | RENOVATIONS & EXTENSIONS
CONVERSIONS & ALTERATIONS | DESIGN & BUILD



A.T. PALMER LTD

RESTORATION • SPECIALISTS • EST.1949

T: 01233 770077

Smarden Business Estate, TN27 8QL

atpalmer.co.uk

ASH
SCAFFOLDING LTD

Conservation
Scaffolding Specialists



Smarden Business Estate, Smarden, Ashford TN27 8QL
Tel: 01233 770373 email: info@ashscaffoldingltd.co.uk
www.ashscaffoldingltd.co.uk



ADDERLEY MASONRY



7 Abbey Place,
Faversham ME13 7BG

Tel: 07791 233 922

info@adderleymasonry.com
www.adderleymasonry.com

Getting the right masonry team to undertake your project is key to upholding its integrity and history. That's why we aim to provide a high quality and efficient workmanship that both compliments and protects the fabric of the building.

DOLMEN

CONSERVATION
& JOINERY

BESPOKE ARCHITECTURAL JOINERY
ENGLISH VERNACULAR CARPENTRY | HANDMADE KITCHENS
PERIOD DOORS AND WINDOWS | SUSTAINABLE TIMBER SOURCING

dolmenjoinery.co.uk | projects@dolmenjoinery.co.uk | 01708 732 813 | 01233 746 301 | @dolmenconservation
WOODCHURCH - KENT



Bloors Manor showing the completed double light window to the right of the arched doorway

WRITTEN IN STONE

WE MEET HARRY ADDERLEY, DIRECTOR OF ADDERLEY MASONRY LTD, A TALENTED AND COMMITTED MASON, WHOSE PATH IN LIFE SEEMED CARVED OUT FROM A VERY EARLY AGE.

Having a mother that was an architect and a father who was a builder, young Harry Adderley was no stranger to building sites and construction projects in his formative years. It was possibly always on the cards that his future life would involve a career that was connected to one of the trades or professions in this arena.

Many of us struggle when it comes to choosing our occupation, the answer to the question we're often asked as children, 'what do

you want to do when you grow up?' can change almost weekly. So, it's a fortunate person that finds their path in life early and knows exactly what they want to do.

At the age of fourteen Harry was in Barcelona to play rugby with his school team, when he had what he describes as his epiphany. He went to the Sagrada Familia, Antoni Gaudi's stunningly beautiful Spanish Gothic cathedral. He was awestruck by the intricacy of the decorative stonework and the sheer magnificence of the



Bloors Manor detail showing doorway that is to be replaced



Bloors Manor detail showing the completed double light window replacing the doorway

building, it fascinated him and at this moment he knew he wanted to work with old and characterful buildings, and his love of stone was kindled.

And it really did set him on his course in life. The initial spark of interest in historic buildings and stonework became a full-blown passion over the next few years. It was a natural progression for him to seek out a way of learning more about the subject, so the next step was to study for an FdSc in Applied Architectural Stonework and Conservation, and a BSc in Heritage conservation at Weymouth University.

The courses were everything he hoped for; he learned how to identify different types of stone, what sort of matrix it is made from, what factors cause different types of weathering processes and how best to consolidate or repair any damage. Along with this vital knowledge of the materials, he learned how to carve and do lettering, and banker masonry, which is the creation of stonework like windowsills and other architectural stonework. Interestingly the term banker comes from the Latin bank, which means bench, and refers to the mason's work bench. The course also gave him a full grounding in the importance of using traditional materials like lime mortars, and how to make and tend to it for maximum efficiency in any given scenario.

His studies at Weymouth began 12 years ago and after graduating were followed by varied masonry works, building up his experience around the south-east and south-west, and further periods of training, notably a spell at Canterbury Cathedral. He has never lost his enthusiasm for the material he loves,

Here is another of the projects that took place at Bloors Manor. This job entailed building a dwarf wall out of Kentish ragstone, all of which was sourced from the property grounds, and probably made up various other parts of the property in years gone by.



Bloors Manor dwarf wall under construction

it gets stronger as the years go by.

Harry has a professional interest when looking at historic and period properties, he finds a fascination in how they were made rather than the overall product, although this of course interests him greatly too. His focus is on elements that would generally be overlooked by most people, such as the tool marks of the masons who worked on the stone originally and in subsequent restoration attempts, or how well the pointing had been done and what mixes would have been used.

Since starting his own masonry business Adderley Masonry Ltd five years ago he's been very much in demand and has enjoyed working on projects at some very significant historic properties including: Rochester Cathedral, Chartwell, Bodiam Castle and Sissinghurst Castle, and is an approved supplier for the National Trust. One particular recent project was on Bloors Manor in Rainham. The owner had embarked on a restoration of this very picturesque Grade II Listed, 15th Century Wealden Hall House and needed help to rectify

the original stonework that had suffered from previous misguided attempts at restoration with cement and thick lead paint resulting in a high level of degradation to the majority of the windows.

Harry and his team set about assessing each window to remove any paint and metalwork and then either repaired or replaced the stone where necessary, retaining as much of the original fabric of the windows as possible, whilst also ensuring they were structurally sound.

Next was to reinstate a window where one used to be that had been replaced by an out of character door in previous years. The job involved removing a section of stonework above the doorway to allow for props and supports to be used whilst removing the door and window next to it without damaging the structure of the building. The existing window was used as a template to replicate a replacement window that would sit alongside it where the doorway had been. The external and internal stonework was built up and using lifting equipment, the new Kentish rag window was installed.

To complete they had to fill in the remaining stonework and point it using a style called galleting, which means to insert chips of stone into the pointing, a style usually only seen in Kent. The result is a double light window removing the later doorway addition and restoring this part of the Manor House to how it originally was.

The owner of the house at the time, Tim Howard was delighted with the extensive works carried out, "Harry worked on our 15th Century Wealden Hall House built by Christopher Blower, undertaking a significant programme of repairs on our stone mullion windows. This included returning an alteration carried out in the 18th Century - making a window into a doorway - back to its original form. The finished result was astonishing, and the entire façade regained its original character. We couldn't have

been happier."

The team also constructed a dwarf wall out of recycled Kentish ragstone, making good use of stone that was found on the property whilst performing other ground works, and probably made up various other parts of the property in years gone by.

"It feels like I've always known I wanted to work with interesting old buildings, they have a character that you just don't find with new builds. My love of stonework, heritage architecture and its conservation draws me in. I just want to make sure it's treated well, so it's restored without replacing anything unnecessarily and it lives on into the future, so everyone can benefit."

For more info visit: adderleymasonry.co.uk

For a free quote please call 07791233922 or email info@adderleymasonry.co.uk

OTHER PROJECTS:

62 South Road

This project was an insurance job, as the wall in question was hit by a van and had become unstable as a result. The work included removing the vegetation from around the

affected area, the taking down the coping stones and stonework to a level that was stable. The wall was then built back using the original stone to the proper line, using a mixture of sharp sand and lime, with the addition of coal as that was present in the original mortar.





St Mary the Virgin, Chiddingstone

On this job Adderley Masonry provided a labour force for our colleagues at Pinacle stonework, to install stone worked and provided by them, with additional labour support, on a window on the north aisle of the church. The stone had dilapidated quite severely and the window had warped meaning each stone had to be individually cut to size to bring the front face into alignment. The old stone was first cut back to the window line, before

cutting slots into the stones at various points to insert pins to ensure the stability of the new stones and a strong join between the old and new. A particular mention needs to be made to Steve Hill, director of Pinacle stoneworks, as the amount of setting out required to install this window as each stone was different in size and shape, and the warping of the window was such that the dimensions changed even more to accommodate, but in the end the results speak for themselves.

We are the UK's leading restorer and repairer of traditional, distinctive oast cowl & kiln roofs.

New cowl construction. Painting & cleaning. Repair & maintenance. Also specialising in Kent peg tile roof repairs and kiln tile repairs.

Trusted over four family generations by royalty, businesses & homeowners alike.



Book a no-obligation visit
01622 725 898 / 07973 332 790
www.dudeandarnette.co.uk



DUDE & ARNETTE

OAST COWL CONSTRUCTION



Oast owners

SOUTHERN STONE LTD

Stonemasonry Specialists



We specialise in all areas of stone works ranging from stone cleaning to stone restoration. Our range of works include:

QUINQUENNIAL INSPECTIONS · STONE RESTORATION
GARDEN WALLING · GATE PIERS · WINDOWS · ARCHES
FIREPLACES · STEPS · PATIOS · COMPLETE STONE HOUSES
EXTENSIONS TO NEW BUILDS · POINTING

Tel: 01892 263436 • Mob: 07837 970835

Email: southernstone@live.co.uk

www.southernstoneltd.co.uk

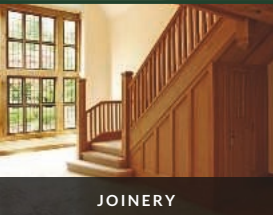


ORLESTONE OAK

KENT · ENGLAND

Bespoke Flooring

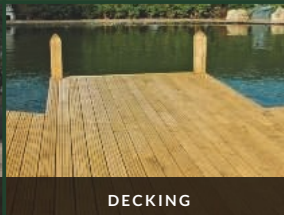
LONG & WIDE · PRODUCED IN KENT · FINISHED BY HAND



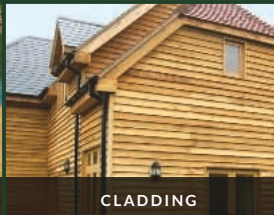
JOINERY



OAK FRAMED BUILDINGS



DECKING



CLADDING

For more information on pricing or fitting, or to place an order

CALL **01233 732179** VISIT **orlestoneoak.co.uk**

A reputation built on quality
craftsmanship and service

*Karl
Terry*

Roofing Contractors



Kent Peg Tiling & Listed Building Specialists.
Conservation and renovation specialists.
High quality work by experienced craftsman.
National Award Winning Company.

01797 270 268 | kentpegs.com





A SUBSTANTIAL AND BEAUTIFULLY REFURBISHED GRADE II LISTED MANOR HOUSE WITH A SEPARATE COACH HOUSE ON THE EDGE OF A SOUGHT-AFTER VILLAGE

Shalmsford Bridge Manor, Chartham

Shalmsford Bridge Manor is a fantastic family home believed to date to the 16th century. The original timber-framed wing of the house combines beautifully with Victorian additions, creating an interesting property which has been sensitively modernised and refurbished to produce a superb living space. Period features include sash windows, high ceilings, original fireplaces and exposed beams, resulting in a house of great character with bright accommodation.

The accommodation is arranged around a central reception hall. The elegant drawing room is a very light room with full-height sash windows, including a bay, and an open fireplace. The generous dining room has exposed wooden floorboards, an inglenook fireplace with wood-burning stove as well as a particularly ornate late 17th century plastered ceiling. Double doors open to a conservatory which in turn leads through to a useful study area located off the hall. A cosy snug to the front of the house



benefits from a full height bay window.

The kitchen/breakfast room sits in the older part of the house and is a generous space arranged around a central island and an Aga with ample room for a table. A cellar provides an excellent laundry room and wine cellar.

The house has well-proportioned bedroom accommodation, the centrepiece of which is the magnificent principal bedroom with a spectacular vaulted ceiling, a generous en suite bathroom with a free standing bath and a separate shower and a walk in wardrobe. There are four further bedrooms, an additional study and a contemporary family bathroom with free standing bath and separate walk-in shower.

The charming Coach House provides an excellent guest house. Arranged with the reception space on the first floor, there is a kitchen to one end and a sitting/dining area opening to a terrace. On the ground floor are

two en suite bedrooms. The cottage currently operates as a holiday let which we understand is very successful and provides additional income.

OUTSIDE

Set in about 2.7 acres and approached through double wrought iron gates over a sweeping driveway arriving in front of the house and continuing to the Coach House. The gardens have been beautifully landscaped, providing a wonderful setting and giving structure and interest with different areas to enjoy and entertain in.

To the south of the house is a large flat lawn, perfect for erecting a marquee. Steps rise to a further lawn and formal parterre garden and flowerbeds. The lawns continue around the house, bordered by mature trees and shrubs. Behind the Coach House is a secluded garden with a hot tub, and adjoining is the garage,





workshop and greenhouse next to a vegetable garden. To the front is a delightful water garden and a swimming pool with a terrace,

LOCATION

Chartham is a popular residential village with an array of day-to-day amenities including local shops, primary school, doctor's surgery and public house. The property is conveniently located for access to Canterbury, Ashford and Faversham, which together provide an extensive range of shops, leisure and recreational facilities; the immediate area offers a good selection of schooling in both state and private sectors.

Strictly by appointment with Strutt & Parker.

Tel: 01227 451123

Price: £1,650,000

canterbury@struttandparker.com

www.struttandparker.com

The details

Entrance lobby | Reception hall |
Drawing room | Dining room | Snug
| Study | Conservatory | Kitchen/
breakfast room | Cloakroom/shower
room | Cellar with laundry room
and wine cellar | Principal bedroom
with en suite bathroom | 4 Further
bedrooms | Family bathroom |
Further study | Coach House: open
plan kitchen/sitting/dining room | 2
Bedrooms (both en suite) | Double
garage | Garden store | Workshop
| Greenhouse | Swimming pool |
Garden | About 2.7 acres



Supporting the Kent community for over 235 years

Whitehead Monckton solicitors are based in Tenterden, Canterbury, Maidstone and London providing specialist legal services to individuals and businesses. Our clients tell us we are good listeners and great lawyers, but don't take their word for it.

If you would like help with:

- Wills
- Tax & Estate Planning
- Probate
- Family
- Residential Conveyancing

If your business needs help with:

- Contracts & Transactions
- Property
- Licensing
- Employment



Call Maidstone 01622 698000

or visit **www.whitehead-monckton.co.uk**

info@whitehead-monckton.co.uk

5 Eclipse Park, Sittingbourne Road, Maidstone, Kent, ME14 3EN

DEATH BED GIFTS

What are they?

*Article written by Samuel Corse, Legal Executive, 01622 698068.
samuelcorse@wmlaw.uk*

A death bed gift (more formally known as donation mortis causa) is a gift made by an individual who believes that there is a chance of imminent death and wish to make a gift outside of the provisions of their Will or if they have not made a Will, outside the Intestacy rules.

The Wills Act sets out very stringent requirements on individuals completing a valid Will – namely that it has to be in writing and signed by the individual in the presence of two witnesses.

However, an individual in certain circumstances can successfully make a deathbed gift which does not require any formality, even for gifts of land! Such an exception has often been perceived as undermining the requirements of the Wills Act.

WHAT MAKES THEM VALID?

For a deathbed gift to take effect there needs to be the following:-

1. The gift must be made in contemplation of death. The donor must anticipate that they do not have long to live due to an identifiable cause, though there is no requirement for the donor to be in hospital or for death to be inevitable. As exemplified in *King v Dubrey* 2014, contemplation of death means serious illness or perhaps embarking



on a dangerous expedition or dangerous operation.

2. The gift must be made with the intention that the property will pass on the donor's death, as opposed to during their lifetime.
3. The gift must be given or 'delivered' physically.

Either the gift itself or something representing the gift must be delivered by the donor or by their authorised 'agent'. Under *Sen v Headley* 1991 it was concluded that physical possession is of (a) the subject matter or (b) some means of accessing the subject matter (such as the key to a box) or (c) documents evidencing entitlement to possession of the subject matter. For land this can mean handing over the deeds to the property.

In prior years the case law concerning



deathbed gifts seemed to become increasingly relaxed with courts frequently upholding such claimed gifts.

Such a development became problematic for Executors and beneficiaries of an estate, as often the gift in question (i.e. the property) would be the largest asset of an estate. Such claims often resulted in protracted litigation for an estate in a situation where the one of the main witnesses was no longer around to give their version of events. This left the courts stuck between balancing the apparent wishes of the donor and upholding a valid Will. This was a tilt which seemed to lean away from the requirements of the Wills Act.

Fortunately, the Court of Appeal decision in *King v Dubrey* 2014 and the decision in *Davey & Anor v Bailey & Ors* 2021, held that the above rules must be strictly followed for the gift to be legally valid and has curtailed further

expansion of the doctrine and stressed the extreme caution which courts should apply to such claims.

If you have concerns that a person is asserting a death bed gift against an estate you are Executor or beneficiary of, or believe that you are the recipient of a valid death bed gift, then it is important that professional advice is taken on your position with a member of our Contentious Estates team.

Additionally, a common theme in the case law of this doctrine is that individuals can reduce the opportunity of such claims by regularly reviewing their Wills and discussing with their advisers and properly documenting any lifetime gifts they wish to make.



Kentish

FOOD • DRINK • PRODUCE

Local & loving it!

Our county is packed full of fine food and drink.
From furrow to orchard, from marsh to shore -
Kent is crammed with foodie delights.

Fabulous locally produced food includes just-caught fish;
superb oysters; tender Romney Marsh lamb; sweet soft fruit and
tangy apples. Wash it down with locally-made, world-class wine;
a crisp cider or a traditionally brewed beer.

All this makes Kent an outstanding place to eat out.
From contemporary Michelin-starred restaurants to
characterful eateries graced by log fires or stunning sea
views. Kent offers everything from fine dining and gourmet
Asian cuisine, to great grub in rural pubs.

Kent is also renowned for its orchards abundant with apples,
pears and cherries. Fertile soil, a favourable climate and
centuries-old expertise create prime growing conditions.





The Curious, for every celebration



CURIOUS

Now taking Christmas bookings for exclusive hire.

Tel: 01622 299359 www.thecurioseatery.co.uk

Curious Eatery, Albion Inn,
1 Church Street, Boughton Monchelsea,
Maidstone ME17 4HW



Enjoy the seaside all-time
favourite dish in the perfect setting



The newest and most modern Fish Bar in Herne Bay

123 Central Parade, Herne Bay CT6 8SS | Tel: 01227 740700

www.sunsetfishbar.co.uk

Grapevine
MEZE • WINE • BAR

We have an extensive wine list that brings fine wine from all over the world to our little town. From Italy to Romania and Spain to Argentina you are bound to find your favourite. All this is complemented by fine finger food, sharing platters and a wide selection of cheese for you to enjoy.

1 High St, Herne Bay CT6 5LJ

01227 369 369

www.grapevinebar.co.uk





A LA TURKA

TURKISH RESTAURANT

Enjoy a fusion of flavours originating from Gaziantep on the renowned Silk Road, one of the oldest cities in the world home of extraordinary cultural and gastronomic diversity. We are the proud carrier of culinary tradition dated back millenia.



New restaurant opening in the heart of Whitstable

Visit any of our restaurants

A La Turka Westgate Canterbury
15 St. Dunstons St
Canterbury CT2 8AF
westgate@ala-turka.co.uk
01227 639102

A La Turka Herne Bay
61 Central Parade
Herne Bay CT6 5JG
hernebay@ala-turka.co.uk
01227 370707

A La Turka Ramsgate
110-114 Harbour Parade
Ramsgate CT11 8LP
ramsgate@ala-turka.co.uk
01843 588063

www.ala-turka.co.uk





A side of salmon is a great alternative to more traditional celebration meals, whether that is your weekly Sunday roast or something for a special occasion. And eating it with delicious blueberry and dill sauce is a treat!

ORCHARD

Sweet and savoury recipes from the countryside

In Orchard, cook and writer James Rich explores the huge variety of food that can be found in the English countryside, whether that is in the ancient orchards and hedgerows abundant with ingredients or the humble veg patch or kitchen garden verdant with home-grown staples.

**SERVES
SIX**

YOU WILL NEED

850g side of salmon

1 lemon

10g dill, finely chopped

1 tbsp maple syrup

2 tsp rapeseed oil

sea salt and freshly
ground black pepper

For the blueberry sauce

300g fresh or frozen

blueberries

10g dill

2 tbsp caster sugar

1 tbsp balsamic vinegar

To serve

roughly chopped dill

lemon wedges

pea shoots

SIDE OF SALMON WITH BLUEBERRY & DILL SAUCE

METHOD

Preheat the fan oven to 160°C (350°F/gas 4). Line a large baking tin with baking parchment, add the salmon and season generously with salt and pepper.

Finely grate the zest of the lemon and combine in a small bowl with the juice of half of it, the dill, maple syrup and oil. Briefly whisk to combine before pouring over the seasoned salmon, ensuring all the flesh is coated in the marinade.

Bake the salmon for 20-25 minutes until the flesh is just firm to the touch and the marinade is starting to caramelise. Remove from the oven and allow to rest for 5 minutes.

In the meantime, make the blueberry sauce. Cook the blueberries in a heavy-bottomed saucepan with the dill, sugar and balsamic vinegar over a medium heat until the fruit starts to break down, stirring to ensure the fruit doesn't catch. Then, simmer for 5-6 minutes until the sauce is a thick, jammy consistency. Pour into a serving dish.

Transfer the salmon onto a serving dish using the baking parchment. Discard the paper and garnish the salmon with more dill, lemon wedges and pea shoots. Serve with the blueberry sauce.

**SERVES
SIX**

APPLE, PLUM & WALNUT COBBLER

YOU WILL NEED

700g firm plums,
stoned and roughly
chopped

300g cooking apples,
peeled, cored and
chopped

100g dried cranberries,
cherries and raisins or
other dried berries of
your choice

60g golden caster sugar

1 tbsp honey

2 tsp vanilla bean paste

2 tbsp raspberry
liqueur such as Cham-
bord (optional)

cream, custard or ice
cream to serve

For the cobbler topping

150g plain flour

1½ tsp baking powder

100g walnuts

70g caster sugar

150g cold unsalted
butter, cubed

1 egg

demerara sugar
for the top

METHOD

Preheat the oven to 180°C (400°F/gas 6).

Combine all the ingredients for the fruit filling in a large baking dish and stir together until the fruit is well coated with the other ingredients. Bake, uncovered, for 30 minutes until the fruit has started to soften and the juices are bubbling.

Meanwhile, to make the topping, put the flour, baking powder, walnuts and sugar into a food processor and pulse until evenly combined.

Add the butter to the flour mixture and pulse until the mixture resembles breadcrumbs. Add the egg and continue to pulse until it comes together to make a thick, quite wet dough.

Remove the fruit from the oven and spoon dollops of the dough on top of the fruit mixture, creating a good covering, but leaving some gaps for the dough to spread into. Sprinkle with a little demerara sugar and bake in the oven for 40 minutes until golden. Serve hot with cream, custard or ice cream.

COOK'S NOTE

Any combination of fruit will generally work perfectly in this cobbler. If you use soft fruit, like currants or berries, then either reduce or skip the first bake. Likewise, hazelnuts also work well in the cobbler topping instead of walnuts.



WIN A COPY OF ORCHARD

For your chance to win a copy of Orchard, please email your name, address and telephone number to:

dawn@conservationnews.co.uk

Closing date: Monday, 28th November 2022

Orchard: sweet and savoury recipes from the countryside by James Rich out 15th September (Hardie Grant)
All images © Laura Edwards



Perfectly sweet, tart and nutty, a cobbler is a crowd-pleaser. Simply served with some cream or delicious vanilla custard, this dessert is the ideal finale to a Sunday roast.

CHILHAM SHOP

Farm shop & plant centre

Canterbury Road, Chilham CT4 8DX
Tel: 01227 730348 | chilhamshop.co.uk
FREE LOCAL DELIVERIES

Serving Chilham and the surrounding villages for over 35 years with a wide range of fresh, fruit, vegetables, cut flowers, garden plants as well as a good selection of general groceries, dairy, bakery, frozen foods and much more. **Mon to Sat: 8:30am to 6pm Sun: 9am to 5pm. We also run Chilham Post Office.**



FREE DELIVERY to Chilham and neighbouring villages

THE PEPPERBOX INN

Country pub and restaurant, in the heart of Kent



Windmill Hill, Harrietsham, Kent ME17 1LP
www.thepepperboxinn.co.uk | Tel: 01622 842558





THE OYSTER PEARL

PUB & RESTAURANT



The Oyster Pearl



RECOMMENDED
ON RESTAURANT GURU
2022



restaurantguru.com

*Congratulations to
The Oyster Pearl team
Andrew Priest, Executive Director*



FOR LOCALLY SOURCED & FRESHLY PREPARED DISHES EVERY DAY

British and Pan-Asian cuisine. Serving high quality and creative dishes.



185 FAVERSHAM ROAD, WHITSTABLE CT5 4BJ • TEL: 01227 272705

WWW.THEOYSTERPEARLRESTAURANT.COM





Micro eaterie & exclusive deli with inside & outside seating offering an extensive menu. Delicious homemade recipes, serving breakfast, brunch & lunch. Takeaway also available, alongside private catering events.

GILBERTS CAFE & DELI

19 Oxford Street, Whitstable CT5 1DB

Tel: 01227 273189



[gilbertsofwhitstable](https://www.facebook.com/gilbertsofwhitstable)



The BLACKSMITH'S Arms

17th century village pub, near the Pilgrims Way, set in rolling downland countryside. An inglenook log fire gives a warm welcome in winter. Good quality, locally sourced food served.

No children under 14 allowed in bar or restaurant.

No vegetarian options available.

Wednesday - Saturday, 7pm - 11pm (must pre-book for food)

Sunday 4pm - 11pm. No lunches being served at present.

The Street, Wormshill, Sittingbourne ME9 0TU

Tel: 01622 884386

THE OLD NEPTUNE

Marine Terrace, Whitstable CT5 1EJ

01227 272262 • www.thepubonthebeach.co.uk



OPENING HOURS

Mon - Wed: 11.30 - 10pm Thurs - Sat: 11.30 - 11pm

Sun: 12 noon - 9pm

Food served all day Saturday & Sunday from 12-4pm



Mon - Fri 12 noon - 4pm & 5pm - 8.15pm



LIVE MUSIC

Sun 11th Sep Squeeze Gut Alley

Sun 11th Sep Under The Wood

Sun 25th Sep The Native Oyster Band

Sat 1st Oct The Blues Devils

Sun 2nd Oct Barracuda

Sat 8th Oct Bob Dylan Band

Sun 9th Oct Social Care Club

Sun 16th Oct Deep River Blues

Sun 30th Oct Big Orange Head

Sun 6th Nov Love Cats

Sun 13th Nov Bill Saxby & The Dan

Sun 20th Nov Miles Cockman

Sun 27th Nov Bill Saxby & The Dan

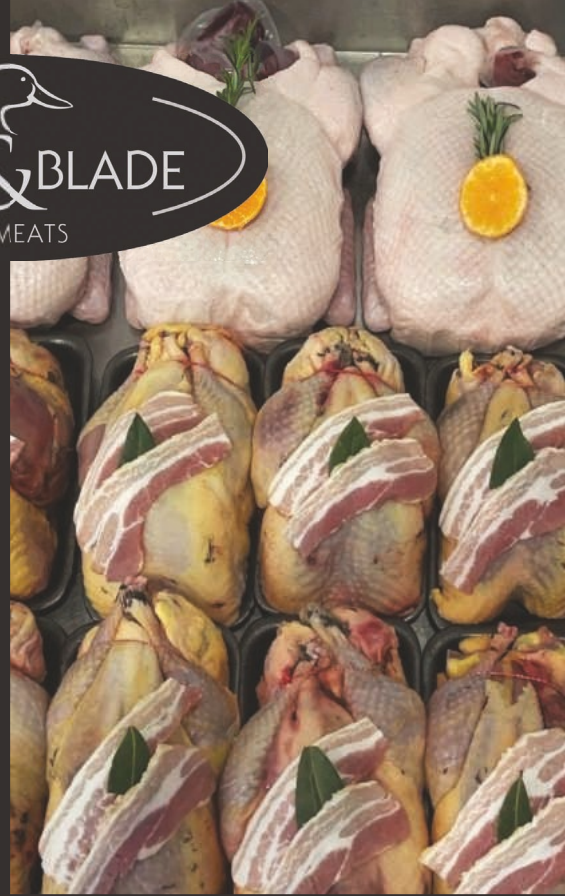
Sun 4th Dec Nightwatch

Sun 11th Dec Gumboots

Sat 17th Dec Under The Wood

Sun 18th Dec Big Orange Head

Please refer the website as bands are subject to change. www.thepubonthebeach.co.uk



Located in Faversham,
Kent, Duck & Blade
Butchery specialise in
local seasonal game, from
pheasant to wild venison,
dry aged beef, English
lamb, pork and poultry,
including beautiful local
turkeys and free-range
geese for Christmas.



For enquiries/orders contact us on enquiries@duckandblade.co.uk or 01795 602106
Riggers Gallery • Standard Quay • Faversham ME13 7BS



— LOCAL —
Farmers' markets



Support your local farmers' market

For more information and to find out what's in season visit www.kfma.org.uk.

SEPTEMBER

THURSDAY: 1st, 8th, 15th, 22nd & 29th Hastings; Rolvenden; Shipbourne

FRIDAY: 2nd, 9th, 16th, 23rd & 30th Tenterden

SATURDAY: 3rd Biggin Hill; Chatham; Deal; Gravesend; Penshurst; Sevenoaks; Tunbridge Wells; Westerham; Wye

SUNDAY: 4th Bearsted; Tunbridge Wells; Whitstable Castle

TUESDAY: 6th, 13th, 20th & 27th Capel-le-Ferne; Folkestone Food Hub; Hildenborough

WEDNESDAY: 7th, 14th, 21st & 28th Wye

SATURDAY: 10th Bridge; Deal; Gravesend; Hythe; Sevenoaks; Tunbridge Wells; Westerham; Whitstable

SUNDAY: 11th Herne Bay; Lenham; Tonbridge; Tunbridge Wells

SATURDAY: 17th Deal; Dover; Gravesend; Sevenoaks; Tunbridge Wells; Westerham; Wye

SUNDAY: 18th Aylesford; Folkestone; Rochester; Staplehurst; Tunbridge Wells; Watlingtonbury

SATURDAY: 24th Ashford; Bridge; Deal; Gravesend; Hythe; Knockholt; Sevenoaks; Tunbridge Wells; Westerham; Whitstable

SUNDAY: 25th Cliftonville; Tunbridge Wells

OCTOBER

SATURDAY: 1st Biggin Hill; Chatham; Deal; Gravesend; Penshurst; Sevenoaks; Tunbridge Wells; Westerham; Wye

SUNDAY: 2nd Bearsted; Tunbridge Wells; Whitstable Castle

TUESDAY 4th, 11th, 18th & 25th Capel-le-Ferne; Folkestone Food Hub; Hildenborough

WEDNESDAY: 5th, 12th, 19th & 26th Rye

THURSDAY: 6th, 13th, 20th & 27th Hastings; Rolvenden; Shipbourne

FRIDAY: 7th, 14th & 28th Tenterden

SATURDAY: 8th Bridge; Deal; Gravesend; Hythe; Sevenoaks; Westerham; Whitstable

SUNDAY: 9th Herne Bay; Lenham; Tonbridge; Tunbridge Wells

SATURDAY: 15th Deal; Dover; Gravesend; Sevenoaks; Tunbridge Wells; Westerham; Wye

SUNDAY: 16th Aylesford; Folkestone; Rochester; Staplehurst; Tunbridge Wells; Watlingtonbury

SATURDAY: 22nd Ashford; Bridge; Deal; Gravesend; Hythe; Knockholt; Sevenoaks; Tunbridge Wells; Westerham; Whitstable

SUNDAY: 23rd Tunbridge Wells

SATURDAY: 29th Deal; Gravesend; Sevenoaks; Westerham

NOVEMBER

TUESDAY: 1st, 8th, 15th 22nd & 29th Capel-le-Ferne; Folkestone Food Hub; Hildenborough

WEDNESDAY: 2nd, 9th, 16th, 23rd & 30th Rye

THURSDAY: 3rd, 10th 17th & 24th Hastings; Rolvenden; Shipbourne

FRIDAY: 4th 11th 18th & 25th Tenterden

SATURDAY: 5th Biggin Hill; Chatham; Deal; Gravesend; Penshurst; Sevenoaks; Tunbridge Wells; Westerham; Wye

SUNDAY: 6th Bearsted; Tunbridge Wells; Whitstable Castle

SATURDAY: 12th Bridge; Deal; Gravesend; Hythe; Sevenoaks; Tunbridge Wells; Westerham; Whitstable

SUNDAY: 13th Herne Bay; Lenham; Tonbridge; Tunbridge Wells

SATURDAY: 19th Deal; Gravesend; Sevenoaks; Tunbridge Wells; Westerham; Wye

SUNDAY: 20th Aylesford; Folkestone; Rochester; Staplehurst; Tunbridge Wells; Watlingtonbury

SATURDAY: 26th Ashford; Bridge; Deal; Gravesend; Hythe; Knockholt; Reuthe's Sevenoaks; Tunbridge Wells; Westerham; Whitstable

SUNDAY: 27th Cliftonville; Tunbridge Wells

THERE'S A NEW GIN IN TOWN

ONLINE SHOP:

WHITSTABLEHARBOURGIN.CO.UK



Come and see us at our Whitstable
Harbour Gin Store - Unit 2 South Quay
Shed - Whitstable CT5 1AB

OUR PREMIER BATCH DISTILLED JUNE 21ST

SMALL BATCH LONDON DRY

WHITSTABLE HARBOUR GIN

WHERE THE WORLD IS YOUR OYSTER





OPENING TIMES
 Lunch: Tue - Sun 12 noon - 2.30pm
 Evenings: Tue - Mon 6pm - 9.30pm



Birdies is one of Whitstable's oldest family run restaurants, serving brilliant locally caught fresh fish features alongside great French classics.

41 Harbour Street, Whitstable CT5 1AH Tel: 01227 265337
www.birdiesrestaurant.co.uk

Baltic House

WINE BAR

A quaint Wine Bar located on Faversham's Standard Quay, with a wide selection of wine, spirits and cocktails. A friendly and relaxing place for you to wind down with a delicious glass of wine and one of our delicious grazing platters



Private functions catered for
 Seasonal events
 In-house local art work
 Indoor & outdoor seating
 Dog friendly

Scan here to follow us on social media and keep updated with news and events!



Baltic House,
 Standard Quay, telephone 01795 342402
 Faversham, Kent email info@baltichousewinebar.com
 ME13 7BS

Open:
 Thurs-Sat 12-10
 Sun 12-9

Birdies, Whitstable

BIRDIES IS A BEAUTIFUL FRENCH BISTRO IN THE HEART OF WHITSTABLE, FULL OF CHARACTER AND CHARM, SERVING LOCAL SEAFOOD, AN ARRAY OF FRENCH DELIGHTS & HOMEMADE DESSERTS.

Originally opened in November 1984, Birdies restaurant has quite the heritage. Owner and chefs Phil and Sue have a passion for fresh flavours and the best produce, having worked between New York and London before taking on their own venture. Culinary expertise is obviously in the blood as Phil's Uncle Peter worked in the prestigious Café Europa in New York, inspiring him to train to be a chef.

As Phil works closely alongside local growers and fishermen, the menu evolves regularly to reflect the seasons and there's also a dish of the day so that no matter when you visit there'll be something new to try.

The interiors have an old-school feel with mismatched artworks adorning the painted brick walls, and red and white tablecloths covering the simple tables. A tiled terracotta floor and chalkboard menus add to the homely appeal.

Despite the menu changing regularly, there is typically the same style of dishes on offer so that you can roughly gauge the types of things to expect. Traditional French favourites like mussels in white wine and cream or a smooth chicken liver pate feature on the starter menu, or you could plump for a plate of six fresh oysters. Rich beef Wellington takes centre stage on the main section alongside things like

lobster with saffron cream and mussels, or fillet of hake with a pesto crust.

The oysters were amazing and the fish assiette was lovely: moules, crab, smoked salmon, langoustine, salad and more oysters.

Birdies Restaurant brings a slice of rural French charm to the seaside town of Whitstable, serving up classic dishes in a warm and welcoming environment.

Despite the tempting selection of savouries, make sure to save room for dessert. A vanilla creme brulee is rich and silky smooth, while the lemon tart (one of Sue's deserts) nprovides a lighter end to your meal should you prefer. Of course, no French restaurant is complete without a healthy cheeseboard, and Birdies doesn't disappoint with its selection of wonderful European cheeses and accompaniments.

A lovely atmosphere and attentive staff – along with the exquisite food – this place is highly recommended.

Some exciting news! Birdies is expanding as Phil and Sue have just bought the shop, Harry's next door – watch this space.

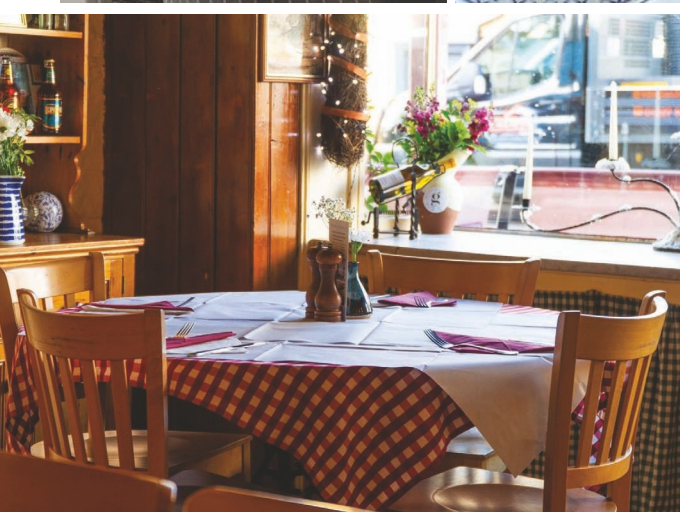
Birdies

41 Harbour Street,

Whitstable, CT5 1AH

Tel: 01227 265337

www.birdiesrestaurant.co.uk



Bull Green Farm

QUALITY FARM PRODUCE

Bull Green,
Bethersden TN26 3LB
Tel: 01233 822463
Email: Shop@BullGreenFarm.co.uk

We are a family-run farm rearing Dexter cows, sheep and chickens. We believe animals should be able to roam free in the fields and enjoy fresh air and green grass.

We have a nicely stocked shop with fresh eggs daily, home grown veg, and a variety of local products such as Kentish honey, jams, and occasionally freshly baked cakes. We also have a freezer packed with locally made pies and tasty treats.



LOWER HARDRES FARM SHOP

- In-house butchery
- Free-range chickens; local lamb, beef and pork
- Fresh local produce
- Fruit, vegetables and salad, sourced as locally as possible
- Cheese and deli products
- Stockist of The Chai Stop finest curries
- Seasoned logs, coal and kindling
- Skinners dog food; bird food
- Local wines and ciders

01227
700947



www.lowerhardresfarmshop.co.uk email: info@lowerhardresfarmshop.co.uk
Lower Hardres Farm, Lower Hardres, Canterbury CT4 5NU

JOIN US FOR OUR BIG BIRTHDAY BASH!

17TH SEPTEMBER 2022 | 12-9PM
THE FOOD VILLAGE, FAVERSHAM

CELEBRATE 175 YEARS
OF MACKNADE



LIVE MUSIC

from Gracie & The Booms & DJ Finchy

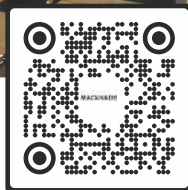
SUPPLIER TASTINGS & MASTERCLASSES

KIDS CRAFT ACTIVITIES

STREET FOOD & DRINKS

GAMES & PRIZES

FREE ENTRY!



SCAN ME

◀◀◀
DISCOVER
MORE HERE

MACKNADE
EST. 1847
175

SELLING ROAD | FAVERSHAM KENT | ME13 8XF
MACKNADE.COM

Twitter Facebook Instagram YouTube @MACKNADE

FOOD MILES

WHAT DOES IT MEAN FOR WINE?

- WORDS BY MACKNADE -

The concept of 'food miles' or the distance foods travel from their point of origin to their point of consumption has been around for many years. The Covid-19 pandemic has quite rightly brought into sharp focus the interconnectedness of our societies, economies, and physical environment like never before.

Historically, the UK has relied on importing wine as it was unable to make its own - how times have changed – though it's made us a sophisticated audience with broad tastes and choices and being an island, freight is crucial to supply.

As food miles only look at emissions associated with freight and not the production phase (which can account for the majority), it can be an inadequate measure and fails to account for efficient production practices - low food miles doesn't always mean an eco-friendly wine!

Despite this fact, food miles are at times mistakenly used interchangeably with the concept of sustainability i.e. how can a product be sustainable if it has been shipped from Australia or New Zealand?

The vastly different Green House Gas emissions resulting from different forms of transport must be considered. Wine from say, New Zealand, in general, is ocean freighted to international markets which produces significantly lower emissions than transport by air, road, or rail.

While one study found a bottle of wine sent to New York from California had a carbon footprint about 1.8 times that of a bottle of wine imported to New York from France, largely because of the

extensive time the Californian wine spent being transported by trucks.

While the key message is that distance does not simply equal a higher carbon footprint, it is a great time of year to enjoy English wine, with Kentish Bacchus season in full swing.

Bacchus, the poster-boy for Kent wines, may take its name from the Roman god of wine, but it is still a baby in terms of wine grape ancestry.

It is believed to be a combination of a Riesling-Silvaner cross with Müller-Thurgau, first achieved in Germany in the 1930s. It was not allowed in commercially available wines until the 1970s.

In England, the cooler climate can lift the acidity of Bacchus and it has been touted as the country's answer to Sauvignon Blanc.

It's a relatively early ripener in the growing season and that's why it was generally known for having high sugar potential and low acidity levels and was rarely considered good enough for premier white wine unlike Riesling.

But in recent decades, more English producers have joined forces to explore the potential of the grape, tweaking the viticultural and winemaking parameters to create a diverse line-up of still and sparkling Bacchus.

Now the total planting of Bacchus adds up to 175ha, or 5% of the total land under vines in the UK, according to Wine GB's Industry

Report 2020. In most cases, the high acidity and saline, herbal characters of a dry Bacchus make it a moreish, cleansing pairing partner to goats cheese, fish dishes and Italian risotto.

You'll find a comprehensive selection of Bacchus online at macknade.com or in our

shops in Ashford & Faversham, where you can also enjoy free corkage in our restaurants & Food Village. This means you can pick your favourite wines from the shelves to drink in at retail price, which is roughly half of what you would pay on most wine lists!





SAM'S

FREE RANGE TURKEYS



Our turkeys are reared to the highest welfare standards, and are free to range the meadow and grassland which makes up nearly four acres of land.

Traditionally prepared by hand, having hung for a minimum of 14 days, your turkey is guaranteed to be of the highest quality and oven-ready for your special day. Our birds are available either whole or as a crown.

ORDER NOW

Tel: 07742 667491

Wey Street Farm

Faversham ME 13 9JB

email: info@samsturkeys.co.uk

www.samsturkeys.co.uk

www.conservationsociety.co.uk



COPPERS BISTRO

Café ✦ Kitchen ✦ Bar



OPENING HOURS

Mon-Sat 9am-5pm

Sun 10am - 7pm

MUSIC NIGHT

Friday 30th September

Jason Allen

QUIZ NIGHTS

Thursday 6th October

Lasagne & Tiramisu, £13.50pp

Thursday 3rd November

Wellingtons & Eclairs, £13.50pp

HALLOWEEN PARTY

Friday 28th October

with DJ Stewart Brown, £14.95pp

CHRISTMAS PARTY NIGHTS

Friday 2nd December

with Leslie P George

Friday 9th December

ITV's Starstruck contestant,

James Lewis, Elton John tribute

Friday 16th December

ITV's Starstruck contestant,

Taryn, Whitney Houston tribute

All Christmas party nights,

£39.95pp

CHRISTMAS QUIZ & DINNER

Tuesday 6th December, £13.50pp

Our Winter opening hours from

3rd October are:

Open Daily 10am to 4pm

Closed all day Tuesday.

Santa weekends at Preston Garden Centre

Saturday 10th & Sunday 11th

Saturday 17th & Sunday 18th



Booking essential – phone for details

The Street, Preston, nr Wingham, Canterbury CT3 1ED



Tel: 01227 728580



A stylish & modern kitchen designed to suit you



Court Lodge Farm, Bishopsbourne, CT4 5HR | Phone: 01227 831663

Email: info@hogwoodhouse.co.uk | www.hogwoodhouse.co.uk