

# CONSERVATION NEWS

West Kent & The Weald

Spring 2023 • Complimentary

## A warm welcome

MAKING THE MOST OF YOUR HALLWAY



*Creating a*  
**BOOT ROOM**



wells

BEDDING & INTERIORS  
The furniture experts since 1925

## Wells Bespoke

from RRP: ~~£3,503~~, **less 20%**  
**sale price £2,795**

We at Wells love JOHN SANKEY and are delighted to be their premier stockist with the largest display of this gorgeous furniture. We have worked in collaboration to create unique models and fabric recipes from our vast fabric library to show off the beauty and quality of these stunning sofas and chairs in coordinated room sets which will fire the imagination!



# Voltaire Range

The Best Bed &  
Furniture Sale  
Guaranteed!



Our fabric library includes many of the leading brands including:  
Linwood, Sandersons, Romo, Designers Guild,  
Ralph Lauren, Morris & Co and many more. The choice is amazing  
and we can tailor a unique item for you with the help  
of our in-house interior designer.

We look forward to welcoming you to our new showrooms.

44 High Street, Royal Tunbridge Wells, Kent TN1 1XF  
T: 01892 535555 E: [sales@wellsinteriors.co.uk](mailto:sales@wellsinteriors.co.uk) [www.wellsinteriors.co.uk](http://www.wellsinteriors.co.uk)



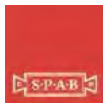
# Ashford & Cranbrook Roofing<sup>TM</sup>

— Experts in heritage roofing —



Proud to supply authentic Kent Peg tiles through our partner Spicer Tiles

[www.cranbrookroofing.co.uk](http://www.cranbrookroofing.co.uk)



**Tel: 01580 242925**



# Welcome Spring 2023



*Competition winners from our winter issue:*  
*Boys Hall lunch - Hannah Brown from Rainham;*  
*The Cocktail Edit book - Alex Head from Pluckley;*  
*Stagioni book - Anne Francis-Fisher from Maidstone*

**W**elcome to the new edition of Conservation News. Guess what? Spring has sprung! And we're feeling the wonderful effects of the longer days.

Here in the CN office, we're gearing up for outdoor parties, long walks in the countryside and everything that Kent has to offer once blue skies appear.

Speaking of what Kent has to offer, this quarter we're going crazy for all things local, and we've got details on some of Kent's finest produce, as well as an informative piece on why it pays to support independent businesses.

Better weather means more opportunities for home improvement, and we've got great articles on sprucing up your hallway, as well as building the perfect boot room to protect your home from mud and damp during those April showers. All this plus gardening tips, local news and the lowdown on Kent's most reliable businesses for your every need – here's hoping you'll be reading this magazine in your garden while you watch the spring bulbs appear.

*Dawn & Nadene*



**CONSERVATION NEWS**  
[conservationnews.co.uk](http://conservationnews.co.uk)

*Publisher*  
Conservation News  
[dawn@conservationnews.co.uk](mailto:dawn@conservationnews.co.uk)

*Contributors*  
Susan Hubbard  
Liz Norton  
Louise Tomlin

Cover: [lights4.fun.co.uk](http://lights4.fun.co.uk)

*Design*  
Dandelion Design

*Sales Manager*  
Nadene Weed  
Tel: 07515 157795  
[nadene@conservationnews.co.uk](mailto:nadene@conservationnews.co.uk)

© Conservation News 2023

Printed in the UK by Pensord

If you receive your copy of Conservation News by Royal Mail and wish to opt out of our mailing, please send an email to [dawn@conservationnews.co.uk](mailto:dawn@conservationnews.co.uk)

All rights reserved.  
Reproduction of any part of this magazine is not permitted without written permission of the publisher.  
The publisher accepts no responsibility of any loss or damage in respect of any product or service that may be advertised.





FAIRFAX GALLERY



Shirin Tabeshfar 'Place Revisited' Oil on Canvas 100 x 120cm



David Atkins 'Early Autumn, Camber Sands' Oil on Canvas 80 x 110cm

Over 100 original contemporary paintings and sculpture by established, award-winning and emerging artists. We also offer a home trial service to enable clients to view artworks in situ.

23 The Pantiles, (Lower Walk), Royal Tunbridge Wells  
[www.fairfaxgallery.com](http://www.fairfaxgallery.com) (Est. 1995) Tel: 01892 525525





Spring 2023

# Contents



8 **Spring gardening**  
What to do in the garden now

18 **The water garden**  
Wild about garden ponds

27 **Make a spring wreath**  
...and win a copy of  
House of Flowers book

36 **A warm welcome**  
Making the most of your hall

50 **Open shelving**  
Display your kitchenware

61 **Creating a boot room**  
One of the latest and  
biggest design trends

71 **Should you add a  
conservatory?**  
Tips and advice

104 **Recipes**  
Grow your own spring menu

110 **Love local**  
Support the shop  
local movement

116 **Restaurant review**  
Land + Sea, Tankerton

120 **Wine column**  
Comparing old and  
new world wines



61



36



50



18



104



71



## Beautiful rhododendrons

The rhododendron is coming into its prime now and looks stunning in containers. Healthy rhododendron specimens have loads of colour, supported with lush green hardy foliage. There are shades to match all tastes, from light pinks to dark reds, purples, creams and white. The rhododendron is ericaceous or acid-loving. If you don't have acid soil, plant it in generous amounts of ericaceous soil from the garden centre to give it a good start. You can also treat it to a regular ericaceous feed during the flowering season and when it finishes flowering.



## START SOWING...

**nectar and pollen-rich hardy annuals, such as marigolds, Californian poppies (eschscholzia) and annual poppies (papaver) in open ground. These will attract the pollinators.**

# Garden NOTES



Each year we look forward to spring to see the end of the dark gloomy days of winter. This is when the garden starts to wake up and the first signs of colour appear. You'll soon be caught up in a frenzy of seed sowing, growing, and nurturing your garden as it comes back to life.



## Bluebell walk 2023

Help raise funds for the Heart of Kent Hospice by signing up to the annual 'Bluebell Walk' which will take place this year on Sunday 30th April 2023. The 'Bluebell Walk' attracted 1,500 walkers in previous years and we hope many more will sign up to take part this year and make it the best walk yet! The annual event sees walkers of all ages enjoy a ramble through the Kent countryside while enjoying the beautiful bluebell vistas. If you have any questions about the Bluebell Walk email [events@hokh.co.uk](mailto:events@hokh.co.uk) or calling the Events team on 01622 790195. [www.hokh.org/support-us/events/bluebell-walk-2023/](http://www.hokh.org/support-us/events/bluebell-walk-2023/).





## LOOKING GOOD NOW

**Myosotis 'Forget-me-not'** During winter, forget-me-nots look like undistinguished leafy rosettes. But as spring advances, they turn into a carpet of flowers that form the perfect background to wallflowers and tulips. In borders they may be left to grow and seed themselves freely.

**Polygonatum (Solomon's Seal)** A member of the Liliaceae family, Solomon's Seal is usually thought of as being for a shady, or half shady spot and does well under trees or shrubs. It is largely pest and trouble free and bears clusters of nodding, tubular creamy white flowers in spring.

## ORGANIC WAYS TO COMBAT PESTS

**Use a pure wood ash feed:** This contains potash which helps to make all parts of a plant less palatable to insects.

**Rotate crops:** Different crops take different elements from the soil so by rotating them it allows the soil to recover its nutrient status. These nutrients keep crops healthier, so they are better able to shrug off pests.

**Attract natural predators:** Encourage natural predators like hoverflies by planting nectar-rich flowers to attract the adults to lay eggs in your garden.

**Feed the birds:** Get birds to visit your garden by feeding them throughout the year. The birds will return the favour by catching garden pests.



## What to do in the kitchen garden

- Now is a good time for planting in the kitchen garden. Round and pointed cabbage, cauliflower, broccoli, kohlrabi and lettuce are all available now as seedlings.
- In the middle of April, peas and mangetout are sown out as well as seed potatoes.
- In the cold frame or greenhouse early lettuces, cresses and radishes can be harvested.
- Keep on top of weed control and continue through to summer.
- Liquid feed fruit trees in pots with a balanced feed every fortnight.
- Prepare runner bean supports for sowing (in May) or planting out (in June).

## Sow and sow

Now is the time to begin sowing small batches of beetroot and carrot seed, repeating every fortnight to ensure an succession of tender young roots from summer to mid-autumn.

Early direct sowings can be protected from cold weather under plastic cloches; once May is in sight they'll likely survive unprotected.





## Newnham Court Shopping Village

There's something for everyone at Newnham Court Shopping Village. Stress-free out of town shopping bursting with quality home and garden inspiration and FREE parking!

Longer, lighter days means that it's the perfect time to nurture our gardens back to their full glory and injecting new life into our homes.

Bring the outside in with a Finline conservatory, orangery or replacement windows and doors. With expert advice visit their large show area outside and displays inside the main centre for inspiration. There's also Johnsons Garden Rooms and Hot Tubs, an expansive range of buildings in a variety of sizes and styles, all fully furnished to let your imagination run wild.

For a smart, stress-free way to transform your kitchen or bathroom, choose Trend Transformation. Their "top that fits on top" provides the perfect look in as little as one day.

If it's outdoor inspiration that you're looking for then Notcutts experts are always on hand to give you friendly advice whether you have a small patio or large garden. There's tools, plants, seeds, ornaments, garden furniture and gifts. They also have a fabulous display of BBQ's and with a visit to The Butcher of Brogdale for some mouth-watering quality meats you'll be set to go!

For anyone with mobility issues, life is not always easy but assisted living solutions provided by Charterwood Mobility and AHM Installations specialists can really transform quality of life inside and outside the home. Visitors to Newnham Court Shopping Village are also able to book the use of a wheelchair or powered scooter as part of the free shopmobility scheme to help get around the shops.

Now in its fortieth year, Newnham Court Shopping Village is open every day and offers a superb range of businesses, services and shops, coffee shop and restaurant. There's quality brands and a fantastic experience for all the family on one convenient level with plenty of free parking. Just off junction 7 of the M20, Maidstone, Kent ME14 5LH.

Visit our website for latest information and all the shops, services and businesses.

**[www.newnhamcourt.co.uk](http://www.newnhamcourt.co.uk)**



**[www.newnhamcourt.co.uk](http://www.newnhamcourt.co.uk)**





## STORE DIRECTORY

AHM Installations	01622 738204
Bricks Coffee House	01622 631022
The Butcher of Brogdale	
Charterwood Mobility	01622 631511
Coffee Corner Restaurant	01622 736744
Cotswold Outdoor/ Runners Need	01622 738381
Edinburgh Woollen Mill	01622 738371
FineLine Windows, Doors & Conservatories	01622 631613
Gymfinity & Nursery	01622 291410
Johnsons Garden Buildings	01622 730777
Klass Collection	01622 730815
Maidenhead Aquatics	01622 739210

Notcutts Garden Centre	01622 739944
Notcutts Home & Gift Shop	01622 739944
Pavers	01622 735922
Pennies Day Nursery	01622 737733
Pure Beauty Essentials	01622 738774
Pure Hairdressing	01622 632642
Shopmobility	01622 631511
Simmonds Schoolwear & Sportswear	01892 837202
Sussex Beds	01622 630576
Timberjacks Fencing	01622 730777
Trend Transformations	01622 469541



**Newnham Court  
Shopping Village**

Constructed and resurfaced  
in Kent, Sussex and Surrey

Please call Martin  
for free advice  
and quotations

Tel: 01424 892265  
07831 643835



[www.martingurr.co.uk](http://www.martingurr.co.uk)



**Kent & Sussex Drives** is a local well-established business with over 30 years experience in driveway construction. We believe a driveway is the first impression any visitors will have of your home.

We have completed some of the most prestigious projects in Kent.

Our blocks come in a wide range of colours and styles from traditional to contemporary, all of which can be completed with a unique shape or pattern. We only lay 50mm block paving from our suppliers which conform to British Standard BS7533 part 3.

**All our driveways come complete with a 10 year guarantee.**

[www.kentandsussexdrives.com](http://www.kentandsussexdrives.com)

[ksdrives@mail.com](mailto:ksdrives@mail.com)

**Contact direct: 07789 360748**





# Stanbridge Surfacing Ltd

Driveway Specialists



- Resin bound & bonded • Hot bitumen & gravel
- Groundworks • Tarmacadam
- Dropped kerbs & crossovers • Block paving

Tel: 01892 652700 Mobile: 07506 968221  
stanbridgesurfacing.co.uk | info@stanbridgesurfacing.co.uk

Find us on  
**Checkatrade.com**

**The all electric  
MOW SHOW**  
Try the latest battery  
garden machinery



**Mowpower Mow Show**

**Want to do something to save the planet**

Come to the Mowpower **MOW SHOW** in Harrietsham & we'll show you how with the next generation **battery** garden machines from these Brands.



**KRESS**



**Ego**



**Cramer**

**From Tuesday  
April 4<sup>th</sup> to  
Sunday 9<sup>th</sup>  
Demo times  
10am to 4pm  
each day**

**6 days of ZERO EMISSION** garden machinery demos

***Plus you can take one home & try it in your garden***

***Come and see the future  
All the power of petrol without  
the fuel, the fumes or the fuss  
AND... no more pulling***

***Mowpower - battery garden machinery specialists***

Scan the QR  
code to book



Mowpower, Unit 6A & 6B,  
Harrietsham Ind. Est., Station road,  
Harrietsham, ME17 1JA  
Call 01622 828 627

**Mowpower Opening hours**  
**Mon – Fri : 9am to 5pm**  
**Saturday : 10am to 4pm**  
**Sunday : 10am to 2pm**

## Look what's blooming this spring...

### Time to get planting

Spring is our favourite time of year as we start to plant up our baskets and containers with lots of colour. April is ideal to plan and plant your vegetable and fruit gardens too.

### Join our Orchard Club

Sign up in Centre to receive a 5% discount off all purchases in the Garden Centre and Cafe.



UK grown tomatoes



### UK grown Geraniums

**Tip:** Geraniums love sunlight and like 6-8 hours of it a day! So plant in a sunny spot and keep well watered. Deadhead to keep your flowers blooming.



coblاندsgardencentre.co.uk

Dryhill Lane, Sundridge, Sevenoaks, Kent TN14 6AA Tel: 01959 561274

All prices correct at time of going to press. While stocks last.

# Improve, Don't Move!

Maximise the value of your home.

- SPACE-SAVING - MAXIMISE YOUR GARAGE HEADROOM
- SECURITY-ENABLED AUTO-LOCKING SYSTEM
- CHOICE OF 21 COLOURS TO MATCH YOUR HOME
- REMOVAL AND RECYCLING OF YOUR OLD DOOR
- DEDICATED AFTER-CARE TEAM

**GAROLLA** 01732 430 371

**ROLLER  
SHUTTER  
DOORS**



LINES OPEN 7 DAYS A WEEK

www.garolla.co.uk



BESPOKE ELECTRIC DOORS MANUFACTURED IN THE UK

**FREE  
FITTING  
PAYMENT ON  
INSTALLATION**



**PRICED  
EXAMPLE £895**  
COMPACT • UP TO 2.4M



**GAROLLA ★ PREMIUM**  
Increased Security • Double Insulation  
One-Touch Close

**PRICED  
EXAMPLE £1,990**  
PREMIUM • 3.4M • ANTHRACITE



# CREATE YOUR PERFECT SPACE with Outdoor Living



In recent years so many of us have grown to appreciate the benefits of being outdoors, whether you have a large garden, a courtyard, or a balcony we believe any space can be special.

So many of us see our outdoor living and entertainment areas as an extension of our homes and if yours is disappointing you then there is no better time to start planning for summer.

Visit the showroom at Outdoor Living Lenham where you can see displays of various surfaces from natural stone to porcelain as well as garden furniture and accessories to suit all tastes; from dining and lounge sets with optional built-in fire pits to sunbeds, swing seats, twin seats, BBQs, firepits, pizza ovens, bespoke party zones, pergolas, fencing and garden ornaments to name just a few.

As soon as you set foot in our family run showroom we promise to inspire you as you are taken on a journey through our various natural stone and porcelain tiled garden and entertainment zones with seating arrangements to suit any size space, catering to every taste from traditional to contemporary, from clean lines to quirky we have it covered! You will be spoilt for choice and our team with over 40 years of experience can support you to create your own unique garden. Come and have a look around our new showroom, we are open seven days a week and cater to homeowners and trade professionals alike with easy access from the M20/A20 to Ashmill Business Park in Lenham where you can enjoy free parking. We believe in supporting local and have a discount code available on select lines for all Conservation News readers, just quote: **MyPerfectSpace**



COME AND SEE OUR FANTASTIC RANGE OF **GARDEN FURNITURE, PIZZA OVENS, BBQ'S, PLANTERS, POTS, FIRE PITTS, LOGS** AND MUCH, MUCH, MORE!



**OUTDOOR LIVING**  
LENHAM

**UNIT 2, Ashmill Business Park, Ashford Road,  
Lenham, ME17 2GQ 01622 231399**  
**[info@outdoorlivinglenham.co.uk](mailto:info@outdoorlivinglenham.co.uk)**  
**[www.outdoorlivinglenham.co.uk](http://www.outdoorlivinglenham.co.uk)**





# WILD ABOUT garden ponds



NO MATTER HOW BIG OR SMALL, ADDING A POND TO YOUR GARDEN WILL PROVE INVALUABLE FOR WILDLIFE.

A pond is an attractive addition to any garden and, with careful thought about its design and construction, can be a haven for local wildlife. During the last one hundred, over 50 percent of ponds have been lost from the UK countryside, meaning garden ponds and water features now play an increasingly important role.

DO I NEED TO ADD THE WILDLIFE? Wildlife tends to find a new pond surprisingly quickly. Pond skaters and diving beetles usually arrive within a few days or weeks, and amphibians could be on the scene within the year. Tempting as it is to move frogspawn, pond sediment or even pond water from one pond to another this is not a good idea.





Depending on the size of your pond you can expect to see anything from frogs, toads and newts to waterfowl, including mallard ducks, and moorhens.

#### DESIGNING YOUR POND

Try to incorporate at least one side of the pond with a long, shallow slope to allow easy access for wildlife. In general, the larger the pond the more wildlife you can expect to attract. But even a mini pond will provide a habitat and water source for wildlife.

Try to incorporate some shade over part of your pond as it will help reduce build up of algae. Try to ensure that part of the pond is in full sun which will make it more attractive to spawning frogs and toads.

#### ADJACENT HABITAT

A pond doesn't just work in isolation – it is part of a network of habitats. It's a good idea to let grass grow along one edge of the pond, or perhaps grow some shrubs at one side. Keep at least one section of the pond perimeter open and sunny.

#### FISH

Don't put fish in your pond if you want to attract wildlife, they will eat all the insects before you can even get started attracting other species and their waste can cause water quality problems. If you have inherited a pond with lots of fish, see if you can find them a new home in a fish pond or, if that's not possible, why not make a new pond elsewhere in the garden.

## *Managing your pond for wildlife*

### **TOPPING UP**

Don't be too hasty to top up your pond in dry weather. Seasonal ponds are more natural, filling up in winter and occasionally drying out in summer. This can favour certain animals such as newts which can survive in the mud. Where additional water needs to be added try to use rainwater. Use tap water as a last resort.

### **WEED AND ALGAE CONTROL**

Extensive open water is not essential for a good wildlife pond; most creatures prefer an underwater maze of plants. If you do need to do some removal don't remove too much at once.

### **SILTING UP**

If sediment removal is necessary do this in early autumn and try to remove only half at a time in order to minimise the loss of mud-dwelling creatures and their habitat.

### **CUTTING BACK**

If you have allowed grass to grow long along one edge of the pond, strim and mow it in late autumn after young amphibians have had a chance to escape. And delay cutting back marginals until late winter to help give maximum protection.

### **REMOVING LEAVES**

Don't worry if a few leaves fall into your pond as there is little evidence this is bad for pondlife. However, if it is excessive, fish out with a net before they sink to the bottom.

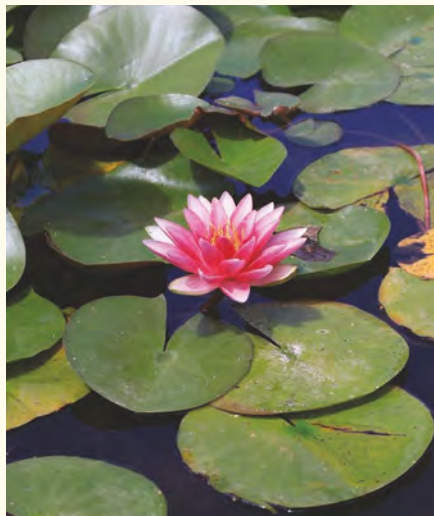
### **FOUNTAINS**

Consider adding a fountain, as this will help to attract birds and frogs. Some have pumps that will help aerate the water or choose a solar design that floats on the surface. If you are installing a pump, make sure it has an integrated wildlife protection system in place.

## *Which plants should I choose?*

Water plants are not just for decoration – they play an important role in maintaining water quality and balance. Firstly, keep the plants you choose in check; pond plants can very quickly take over, so don't plant too many at the beginning.

### **OFFER SHELTER WITH LILIES**



Surface-leaved plants, such as waterlilies help to prevent algae and offer shelter for wildlife. Hardy waterlilies (*Nymphaea*) are known as deep-water aquatics. They have floating leaves and flowers, some of which stand proud of the water.

Choose good-quality, hardy lilies that have been stored in aquatic baskets. Also, make sure the rhizome (root stem) is hard to the touch and there are roots emerging from the sides.

Look for signs of root growth outside the aquatic pot, which indicates the plant has been grown correctly in the proper container and not just recently potted up.

## OXYGENATORS

Oxygenators grow quickly and help to maintain a healthy nitrate level in your pond. The foliage of oxygenators is fully submerged, which means they absorb carbon dioxide during daylight hours and release oxygen into the water.

They're usually sold in bunches tied at one end with a small weight. If you prefer, you can plant them into aquatic baskets topped with gravel.

Oxygenators such as hornwort (*Ceratophyllum demersum*) or water starwort (*Callitriche autumnalis*) give tadpoles and other larvae plenty of underwater cover from predators.

## MARGINALS

Marginal plants are those that grow around the shallower edges of the pond, and can tolerate waterlogged soil or having their crown submerged all year. Good examples include lesser spearwort (*Ranunculus flammula*), flowering rush (*Butomus umbellatus*) and marsh marigold (*Caltha palustris*) to attract bees and hoverflies in summer.

## FLOATING PLANTS

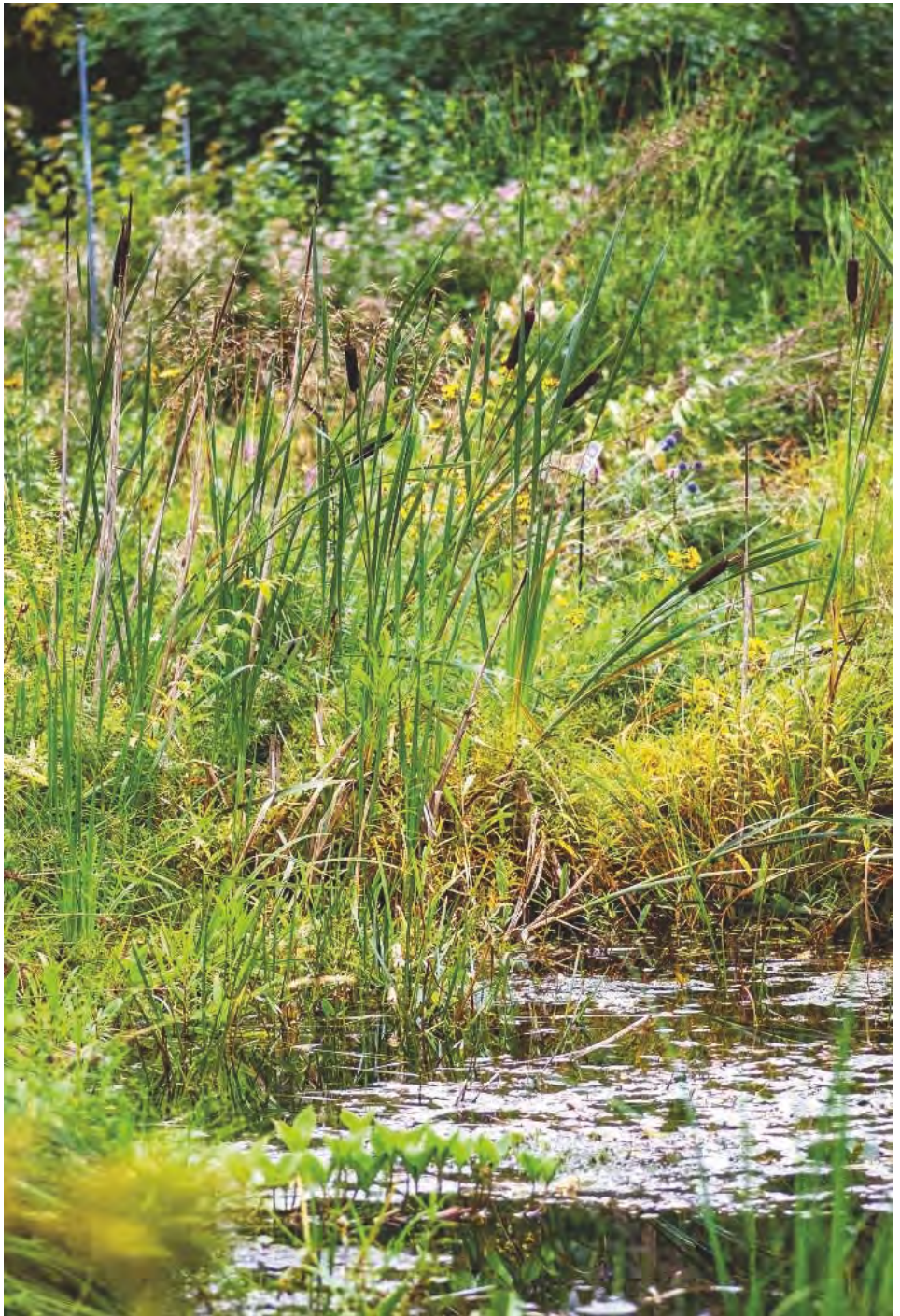
Floating plants provide valuable cover and protection for ponds. They cut down sunlight and help prevent green algae growth and blanket weed problems. Two thirds of your pond should have floating, submerged and oxygenating plants.

## PRE-PLANTED COIR LOGS OR MATS

Some suppliers offer coir logs or mats pre-planted with native pond plants such as soft rush (*Juncus effusus*), purple loosestrife (*Lythrum salicaria*) and yellow flag iris (*Iris pseudacorus*). These are great for anchoring to bare margins of new wildlife ponds or even stream or river banks if your garden happens to back onto these.







**Corker** EST. 2001

# DISCOVER THE GARDEN OF YOUR DREAMS THIS APRIL 29TH!

6 brand new show gardens are opening,  
along with stunning areas that make your  
green space dreams come to life.

Spruce up and revive your outdoor living  
experience - QR code tickets can be  
reserved now by scanning here.



Visit Corker 6 days a week at Corker,  
Whetsted Rd Road A228 in Paddock  
Wood (Kent TN12 6SD).

*See you there!*

**SIGN UP AND  
RECEIVE YOUR  
10% OFF  
EVERYTHING  
COUPONS**



# Artificial grass at trade prices at Gorse Hill Nursery

No mowing! No feeding! No watering!

WE ALSO SUPPLY REAL TURF & TOP SOIL

Our quality artificial grass starts at  
£12 per sq metre inc. VAT.

Free DIY advice or call for a free  
no obligation quote. We sell all you  
need to complete your project.

TRADE ENQUIRIES WELCOME



Samples available on request

Gorse Hill, Farningham DA4 0JU (opposite Scratchers Lane)  
Tel 01322 864704 or 07984 475519 | [www.gorsehillnursery.co.uk](http://www.gorsehillnursery.co.uk)



Beautiful, bespoke-designed, fully finished rooms with the highest quality features, including underfloor heating for year round use.  
Superb value, expertise and friendly service ensure complete satisfaction.

[www.curvegardenrooms.com](http://www.curvegardenrooms.com)

07966 680812

[garry@curvegardenrooms.com](mailto:garry@curvegardenrooms.com)





Bosombe garden set, £735  
Neptune, [neptune.com](http://neptune.com)

Char-broil All Star barbeque, £399.99,  
Notcutts at Newnham Court



Wellies,  
Notcutts at Newnham Court



Gloves, £26.50  
[sophieallport.com](http://sophieallport.com)



Palazzo High Back Lounge Set,  
[lukehurst.co.uk](http://lukehurst.co.uk)

## Outdoor life

### INSPIRING IDEAS



Parasol light with bluetooth  
speakers, £99  
[bridgman.co.uk](http://bridgman.co.uk)



Bamboo daybed, £595  
[roseandgrey.co.uk](http://roseandgrey.co.uk)



Glatz parasol, from £1399.99  
Corker, [corker.co.uk](http://corker.co.uk)



Fire bowl, £100  
[aplaceforeverything.co.uk](http://aplaceforeverything.co.uk)



Fire pit table and seating, £4,800  
[outdoorlivinglenham.co.uk](http://outdoorlivinglenham.co.uk)

# BP & H Baldwin Plumbing & Heating

Established 1969

info@baldwinplumbingandheating

Baldwinplumbingandheating.com

Tel: 07740 949452

- Plumbing
- Heating
- Hot water cylinders
- Boilers (accredited Viessmann fitters)
- Gas
- Bathrooms & kitchens supplied and fitted
- Power flushing
- Fully insured



**VISSMANN**



*Enhance your outdoor living space*



Verandas • Glass Rooms • Awnings • Pergolas  
Carports • Solar Garage Doors & Shutters



SBI Ltd 0800 0742 721 sbiproducts.co.uk

## Heating Oil - Red Diesel\* & DERV



Big Truck or Small Truck for difficult access

all come with Super Prices & Smiling Drivers 😊



01622 - 962599

www.dicefuels.co.uk

**Family owned & operated**

# Make a beautiful Spring wreath

*From spring planters to summer floral crowns and autumn vase arrangements to winter wreaths; life is better with flowers all year round. With clear, step-by-step instructions, expert florist Ashlee Jane leads you through her inspirational ideas for floral designs to bring the calming presence of flowers and foliage into your home.*



## WHAT YOU'LL NEED

- 30-cm (12-in) wreath base (this could be a wire base, rattan base, or one you've created yourself from pliable branches such as clematis vine or willow)
- mossing wire or twine
- sphagnum moss
- water vials
- 3 muscari bulbs
- 2 hyacinth bulbs
- 1 small white primrose plant
- 1 small white pansy plant
- 10 fritillaria
- 3 double white tulips
- 4 daffodil 'Paperwhite'
- 6 hellebores
- 1 bunch olive stems
- 1 bunch pittosporum
- ½ bunch rosemary
- 6 pussy willow stems
- 2 contorted willow branches
- 3 blossom stems
- a handful of blown quail's eggs
- glue gun (optional)

## METHOD

- Attach the wire or twine to the wreath base. If you're using a wire frame (as I have), it's a good idea to create a zig zag pattern with the wire or twine to make a base for the sphagnum moss to sit on.
- Add a chunky layer of sphagnum moss to the wreath base and secure it by taking the wire over and under the frame the whole way around. Keep the wire attached to the wreath.
- Separate the bulbs, shake off any compost





and run the roots under a tepid tap to remove any remaining compost. Lay the bulbs onto the wreath in a formation you're happy with. Keep in mind that the bulbs may grow taller, so consider the height they will grow to when positioning them.

- Meander the wire around the tapered point of the bulbs – you may need to lift some of the foliage to avoid damage. Take your time and ensure they are secure. Once they're all attached, leave the wire attached to the wreath.
- Wrap the bases of the primrose and pansy plants in a little damp sphagnum moss and attach to the wreath base using the wire.
- Fill the water vials two-thirds full with fresh, tepid water and place the lids back on. Choose the flowers you'd like to add to your wreath and gently push the stems into the vials. You can insert more than one stem into each vial at varying heights – if you need to make the hole in the lid a little bigger, simply cut a small slit.
- Position the flowers on top of the wreath base, filling in the gaps between the bulbs and plants. Cover the vials with a little sphagnum moss and then use the wire to secure.
- Once all of the flowers, bulbs and plants are secure, fill any gaps with the foliage. Cut the foliage down to lengths of around 15–20cm (6–8in) and insert the stems directly into the wreath base at a slight angle.
- Stand back and check you are happy with the shape and fullness, making any adjustments as necessary. Cut the pussy willow and contorted willow branches down to the desired size and insert into the sphagnum moss at an angle in the same direction as the foliage.



- To attach the quail's eggs you can either use a glue gun, or wire them like I have here. Simply poke the wire carefully through the egg, bring the lengths of wire down, twist them around each other as close to the egg as possible and then insert the lengths of wire into the wreath base.
- Finally, attach a length of twine to the top of the wreath for hanging.
- Generously spritz the back of the wreath directly onto the sphagnum moss every 2–3 days to keep the foliage hydrated and the bulbs growing. The water vials can be topped up using a long-spouted watering can. Once the flowers have gone over, they can easily be removed and replaced with fresh flowers

#### TOP TIPS

- This is a messy wreath to make, so give yourself plenty of room and have the compost bin close by so you can tidy as you're working.
- I prefer to work in a clockwise direction around the wreath and insert the stem sat an angle to create a circular shape accordingly.



#### WIN A COPY OF HOUSE OF FLOWERS

To win a copy of House of Flowers, please email your name, address and telephone number to: [dawn@conservationnews.co.uk](mailto:dawn@conservationnews.co.uk)



Closing date: Friday 2nd June 2022



# DEBBIE FAIRBRASS

## heirlooms and treasures

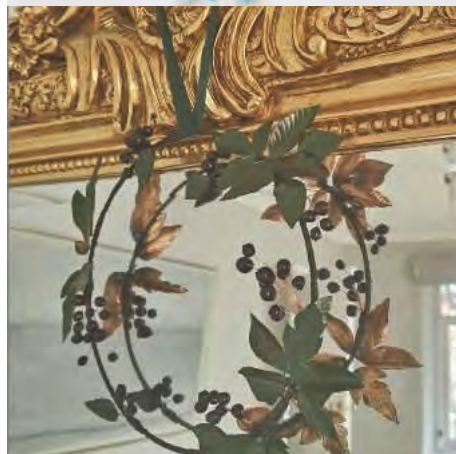


Debbie Fairbrass is a Kent-based artist, specialising in decorative arts using copper and cold porcelain along with gold leaf and oil paints. She lives in a little cottage in the country with her husband and young family, surrounded by wildlife, birds, fruit trees and beautiful English countryside, with each day bringing new inspiration. Some of her favourite things are the early morning sunlight, foraging wild flowers to make bouquets and wildling wreaths, visiting old castles and antique bookstores and home baking with fruit from her garden.

One of the many reasons she loves working with copper is its ability to transform over time, from a glossy bright auburn to a deep ochre or the vivid green patina that comes with weathering and age. Like a long lost treasure uncovered after years of being forgotten, copper only seems to become more beautiful with time.







### *Exclusive Offer*

Debbie is kindly offering all Conservation News magazine readers a special discount of 15% with production of the magazine (can also be redeemed on the website).

For more information on Debbie's work and to shop visit [debbiefairbrass.co.uk](http://debbiefairbrass.co.uk).

Tel: 07549 484093

Email: [debbiefairbrassart@gmail.com](mailto:debbiefairbrassart@gmail.com)

Gibson Bespoke, The Cornerhouse,  
The Square, Lenham, Kent ME17 2PQ

DEBBIE FAIRBRASS



GIBSON BESPOKE | THE CORNERHOUSE, LENHAM  
DEBBIEFAIRBRASS.CO.UK

Graham Clarke



### Studio Open Days 2023

17 18 19 March 14 15 16 April 19 20 21 May  
11am to 3pm

Etchings, watercolours, posters, books, cards and more...

Up The Garden Studio

White Cottage, Green Lane, Boughton Monchelsea,  
Kent, ME17 4LF

We are open by appointment throughout the year,  
wendy@grahamclarke.co.uk 07801 922081

[www.grahamclarke.co.uk](http://www.grahamclarke.co.uk)

## the Anthony Saward Gallery

Original artwork  
available by local Kent  
artist Cathy McClymont



- Bespoke framing ● Wide choice of Mouldings & Sweet Frames
- Over 30 years experience ● Friendly reliable service

4 Medway Street, Maidstone ME14 1JS 01622 676926

[www.sawardgallery.co.uk](http://www.sawardgallery.co.uk)

JOSEPH MCCARTHY

MIRROR & FRAME MAKERS



BEAUTIFULLY CRAFTED MIRRORS  
CREATED TO REFLECT YOUR STYLE

josephmccarthy.co.uk  
01892 527528



# Experience is Everything. And We Have Lots.

Asian Works of Art  
Bronze & Metalware  
Carpets, Rugs & Textiles  
Ceramics & Glass  
Clocks & Barometers  
Coins, Medals & Stamps  
Fashion & Luxury Accessories  
Furniture  
Jewellery  
Musical Instruments  
Paintings, Prints & Maps  
Silverware  
Watches  
Wines & Spirits



## Gorrings's Lewes

15 North Street, Lewes  
East Sussex BN7 2PE

01273 472503

## Gorrings's Tunbridge Wells

Grosvenor House, Grosvenor Park  
Tunbridge Wells, Kent TN1 2BF

01892 556860

[clientservices@gorrings.co.uk](mailto:clientservices@gorrings.co.uk)

[gorrings.co.uk](http://gorrings.co.uk)

See our Latest  
Collectables





## REDEFINING LUXURY, SINCE 1947

Potts have been creating luxury kitchens and bathrooms for over 70 years. Visit us at our showroom in East Malling to see the latest ranges from leading suppliers including Duravit, Villeroy & Boch, Marque IV, Ewe and many more.

01732 848444 • [potts.ltd.uk](https://potts.ltd.uk)

# POTTS

KITCHENS | BATHROOMS



# A warm welcome

## MAKING THE MOST OF YOUR HALLWAY

You don't get a second chance to make a first impression, so getting your hallway décor spot-on is really important. However, because they are often small, dark, awkwardly shaped or simply too well-used, hallways often get neglected when it comes to design.

We come in from a long day and drop shoes and keys or pile up dog leads in our eagerness to settle down or tend to the rest of the house, and the hallway becomes a sort of dumping ground. Hallways deserve more of our attention, so we've put together some top tips to get you inspired to give your space an update.

### Making it 'life proof'

From kids to dogs to guests, the hallway sees a lot of traffic so making your walls and floors hardy and easy to clean is the number one priority.



This makes tiles ideal: not only are they a practical flooring choice for hallways (they're easy to clean, hide dirt and scuffs, and are ideal for high traffic areas) they can be very attractive. Give a traditional Victorian floor a modern twist by opting for monochrome and keep the rest of the space really simple so the flooring doesn't feel too busy.

For walls, it can be worth experimenting with darker colours. Yes, the hallway is often small and dark, especially in period homes, but there are other ways to bring light into the area (more on that later) and dark colours can hide a multitude of sins. If you really don't want too much dark paint in the hallway, consider installing a dado rail and painting dark colours below it, with lighter colours above (we recommend putting the rail at muddy dog height!)

As for what paint you use: a good quality, wipe-down paint is the best bet. It's all very well plumping for that gorgeous suede-effect paint or designer wallpaper, but when you're trying to wipe off the mud from your latest gardening exploits, you may come to regret it.

### **Let there be light!**

How do you bring light back into the hallway if you're using darker paint or tiles?

First of all, you don't need to rely on just your



*Neptune.com*

ceiling light – wall sconces look gorgeous when mixed with simple vintage décor, while halls without room for a table can benefit from a standard lamp. You can make lighting the main feature of your hallway, with a bold statement floor-lamp or ornate ceiling light.

Another way to add light is with mirrors. A large one placed to reflect light from windows or the front door will flood the area with light and make it seem bigger. (Not to mention it's great for last-minute hair touch-ups before hitting the town!)

## Add a console table

A console table is the perfect addition to a hallway as it allows you to display fresh flowers from the garden, your favourite sculpture that you want your guests to see, or a seasonal arrangement to mark the passing of the seasons. Make sure the table has a drawer or cupboard compartment and you'll have somewhere easily accessible to pop your keys or wallet so they don't clutter the area.



*Dunelm*



*Freelands Tiles, [www.freelands-tiles.co.uk](http://www.freelands-tiles.co.uk)*

### **Add a feature wall**

If you are decorating a narrow hallway, or you are otherwise squeezed for space, feature walls are a great way to add plenty of personality without taking up any square footage. It can simply be one that's painted a different

colour, but why not make it more personal?

Get your kids' drawings professionally framed and labelled as if the hall were an art gallery, or print out landscape photos from your favourite holidays to create a timeline of your family adventures.





### Make use of storage space

The space under the stairs is prime real estate for storage, but don't let it become just a dumping ground for shoes and bags, make it part of the design. If you need to use it for less aesthetically-pleasing items like shoes and umbrellas, opt for built-in closed storage that fits seamlessly into the space. You could make it a feature by wallpapering or painting the doors. If you have shoe storage elsewhere, why

not go for a beautiful bookcase? Display books, candles, plants and more to turn that boring space into a real feature.

If your hallway is really tight then use a wall-mounted shelf to save space. Make sure it's thoroughly secured to stop it toppling and try to find one with rounded corners in case of bumps. Hallways can be busy spaces, particularly in family homes, so making sure it's robust is a must.



*Harvey Maria check slate, De Witts*

### Use rugs not carpet

Carpets aren't practical for a hallway, but you can add some softness underfoot by throwing down a rug. A single runner is great for lengthening a narrow room or go for a few shorter mismatching rugs dotted along the space for a more laid-back look.

Rugs can add a splash of colour and personality to a plain hallway, are easy to wash (if you get the right ones) and cheaper to replace than carpet. They can be easily stored so you can have several and swap them around for a different look each season.

# The Antique Oak Flooring Company

SPECIALISTS IN ANTIQUE AND RECLAIMED FLOORING



VIEWING BY APPOINTMENT


Willow Court Farm, Bilsington Road, Ruckinge, Ashford, Kent TN26 2PB

T: 01233 659508 M: 07733 263540 [www.antiqueoakflooring.com](http://www.antiqueoakflooring.com)



# V&A

Drawn from Nature Collection  
Design inspiration from the V&A archives



Helmsley 3 Seater Sofa in Bird & Rabbit Dark Green  
from the Drawn from Nature Collection



SOFAS & STUFF

TUNBRIDGE WELLS SHOWROOM  
The Estate Yard, Eridge, Nr Tunbridge Wells, Kent, TN3 9JR

01892 572309 | [www.sofasandstuff.com](http://www.sofasandstuff.com)



# Ready to talk shutters?



HOME DESIGN VISITS • EXPERT ADVICE • UNRIVALLED PRODUCT QUALITY

[kentbespokeshutters.co.uk](http://kentbespokeshutters.co.uk) | Tel: 0800 634 9678



**KENTBESPOKESHUTTERS.**  
YOUR LOCAL SHUTTER SPECIALISTS





Calvin armchair in green velvet, £429,  
atkinandthyme.co.uk

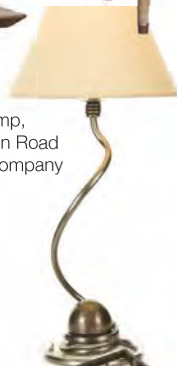
Sideboard, call for price,  
Wells Bedding & Interiors



Pendant light, £119.40  
darlighting.co.uk



Ball lamp,  
The London Road  
Furniture Company



Hudson console table,  
£555, lenleys.co.uk

## GET THE LOOK

# Welcoming hallways



Dorset Console Table, £429,  
lukehurst.co.uk



Shaun Ferguson 'Dress Code'  
Acrylic on Canvas £6,400  
fairfaxgallery.com



Mirror, £1675  
josephmccarthy.co.uk



Cast iron coat hooks, £13.49  
homescapesonline.com



Hall stand, £545  
vincentandbarn.co.uk



**Ooh How Lovely**

See you at  
The Wealden  
Times Fair  
8-10th June

The Corner Shop  
Highgate  
High Street  
Hawkhurst  
TN18 4ER

Open Tue-Sat  
10:00 to 17:00

Contact us  
01580 948303  
07400 522081  
oohhowlovely.co.uk

- Colour scheming & Design
- Bespoke Curtains & Blinds
- Wallpaper & Fabrics
- Unique Upholstery
- Our own Paint Collection
- Pooky lighting plus our Unique Lighting & Shades
- Huge Selection of Cards
- Local Products & Gifts

• 10% off cards & gifts until 23/5/23 with this ad

**THE BATHROOM SHOP**

*Independent bespoke bathroom specialists*

- \* Bathroom installation
- \* Sanitaryware, modern and traditional
- \* Taps and showers, modern and traditional
- \* Shower enclosures and bath screens
- \* Fitted and free-standing furniture
- \* Radiators, modern and traditional
- \* Bathroom tiles supplied and fitted
- \* Accessories and toiletries
- \* Robes, towels, bathmats etc...

11 East Cross, Tenterden, Kent, TN30 6AD \* Telephone: 01580 763207

[www.the-bathroomshop.co.uk](http://www.the-bathroomshop.co.uk)

 BathroomShop  @TheBathroomShop





EST 1975

**CURTAINS  
SOFT FURNISHINGS  
BLINDS &  
REUPHOLSTERY**

Appointments: 07957 811 589  
The Black And White Shop  
Groombridge

Design Manufacture Restoration Bespoke

# THE ENGLISH CHIMNEYPiece

FROM THE EIGHTEENTH TO THE TWENTYFIRST CENTURY



**FIREPLACES - STOVES - GAS FIRES - FLUE SYSTEMS**

[www.english-chimneypiece.co.uk](http://www.english-chimneypiece.co.uk) | 01732 740811

3 St. Botolph's Road, Sevenoaks TN13 3AJ

# HANDMADE RUGS

## relocate to new premises



**B**ill Hill, owner of Handmade Rugs has worked with rugs for 45 years. He was the managing director of Vigo Carpet Gallery in London for 16 years (working with the great and the good); specialising in large antique and semi antique rugs and carpets.

He then formed Hill & Co which he ran for 27 years supplying department Stores and interior designers. During this time he started Handmade Rugs which became his third and

final incarnation. With a gallery in Rye, and one in Alresford Hampshire, they make all types of rugs in India, Afghanistan and Nepal.

Handmade Rugs have a vast stock of rugs between the two stores.

Due to their longstanding associations with weavers, they are able to create rugs in any design imaginable and have a vast array of designs on their database.

Their second-to-none customer service means they can create rugs for you in any size, colour and design. The most popular styles range from Aubusson Savonnerie, Art Deco, Bauhaus, Oriental, Persian, Turkish, and, of course, Indian.

They also offer a wide range of ready-to-buy, rugs in-stock

options that can be both purchased in-store and online.

Each rug they sell is a work of art. They offer a try-before-you-buy service, where you can take your rug home to trial the design in your designated room to be sure your home interior vision works. For more information about this service, please arrange an appointment at our store most local to you, or contact us to discuss.

New store: The Old Bank, 84 High Street Rye, East Sussex. Tel: 01797 360353.



HMR  
HAND MADE RUGS

As well as a vast stock of rugs we have an ever-growing demand for custom-made, designed rugs. Due to our long standing collaboration with weavers across the globe, we can create rugs in any design and colour.



New Handmade Rugs showroom now open

The Old Bank, 84 High Street Rye, East Sussex

Call. 01797 360353

rye@handmaderugs.co.uk

www.handmaderugs.co.uk

# OPEN SHELVING

IN THE KITCHEN, MORE AND MORE OF US ARE CHOOSING TO USE OPEN SHELVING TO PUT OUR CUTE AND QUIRKY MUGS, PLATES AND DINNERWARE ON SHOW RATHER THAN KEEPING THEM OUT OF SIGHT IN CUPBOARDS.



It's fair to say that kitchens are opening up, with a kitchen open shelf in more demand. Modern kitchen design is moving away from ceiling high kitchen cabinets and enclosed spaces. They make kitchens feel cramped. Simply placing a floating shelf in place of an upper cabinet can change the dynamics and create a feeling of more space. There is an appearance of more light, and a kitchen shelf can do a great job of breaking lines.

Open kitchen shelves essentially have two different purposes. They can be purely decorative...placing

*Image: Dunelm*

carefully selected kitchen items to deliver a certain image, or they can be functional. Basically, anything you would have placed in a closed cabinets is on display on the shelf. Generally, commonly used items like dishware are perfect for a shelving unit as they offer easy access.

They give a feeling of space, especially in a small kitchen, and are very functional with their open storage and flexibility in kitchen storage. They will remain in style and are here to stay, regardless of whether you have a rustic kitchen, farmhouse kitchen or a more contemporary kitchen.

A great aesthetic benefit of open shelving is that it presents the opportunity to introduce new textures and materials into your scheme.

Wood-effect kitchen shelves are the most popular option as the warming tones complement classic farmhouse style kitchens and add a warm, rustic touch to modern designs. However, if you're opting for a modern kitchen style, you could opt for a metallic finish for your kitchen shelves.

Open shelves are much cheaper than cabinets. When you compare the cost of a shelf against a cabinet unit, the cupboard doors and fittings, you see that there is a big difference. A wood shelf in

comparison is cheap and more flexible.

Aside from the cost aspects, the functional benefits are many. This is why open shelving on a wall cannot be considered a fad or a passing trend. From a design perspective, they work well too.

## DESIGN TIPS

Arrange objects in a range of sizes and shapes for added interest. If you're worried that a long run of shelving will look untidy, separate the shelf into sections by placing items in groups of three or five.

*Image: Allisa Jacobs*







*Image: The National Trust*

# metalworks

*Design, Engineering, Fabrication & Installation*



**CUSTOMER  
SATISFACTION  
GUARANTEED**



## **WE OFFER EXPERTISE IN:**

- MASTERLY CRAFTED HEAVY DUTY GATES  
AUTOMATIC OR MANUAL INCLUDING FULL  
AUTOMATION AND ENTRY SYSTEMS
- PEDESTRIAN AND ACCESS GATES
- RAILINGS & BALCONIES
- STRUCTURAL STAIRCASES AND MUCH MORE!

**TRUSTED FOR MORE THAN  
20 YEARS OF QUALITY FABRICATION**



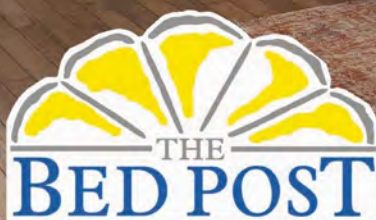
**CONTACT US FOR A FREE ESTIMATE**

**VISIT US ONLINE: [WWW.METALWORKS-UK.COM](http://WWW.METALWORKS-UK.COM)**

**TEL: 01322 838150 EMAIL: [METALWORKS-UK@HOTMAIL.COM](mailto:METALWORKS-UK@HOTMAIL.COM)**



- WE OFFER:**
- **FREE DELIVERY** on all items
  - **DISPOSAL** of your old bed/mattress
  - **HUGE STOCK FOR IMMEDIATE DELIVERY**
  - **EXCEPTIONAL CUSTOMER SERVICE**  
from our friendly & knowledgeable staff



For the *rest* of your life!

**SAVERS  
EVENT  
NOW ON**

Head instore or online to browse our winter sale  
[www.the-bedpost.co.uk](http://www.the-bedpost.co.uk)



**NEW STORE!**

**REIGATE**  
RH2 OAJ  
01737 948345

**CRAYFORD**  
DA1 4LB  
01322 525090

**PETTS WOOD**  
BR5 1DQ  
01689 830964

**SEVENOAKS**  
TN13 2UT  
01732 742000

**SIDCUP**  
DA14 6NF  
020 8309 6016

**BEDS | MATTRESSES | BEDROOM FURNITURE | [www.the-bedpost.co.uk](http://www.the-bedpost.co.uk)**





## **“Bringing style to a Tile”**

**The latest ideas for  
walls and floors**

124-126 London Road,  
Dunton Green, Sevenoaks,  
Kent TN13 2UT

[www.freelands-tiles.co.uk](http://www.freelands-tiles.co.uk)

Tel: 01732 459 765

[sales@freelands-tiles.co.uk](mailto:sales@freelands-tiles.co.uk)



**BE INSPIRED**

**FREE  
LOCAL  
DELIVERY**

## Bespoke Kitchens, Interiors & Accessories



Court Lodge Farm, Bishopsbourne, CT4 5HR | Phone: 01227 831 663  
Email: [info@hogwoodhouse.co.uk](mailto:info@hogwoodhouse.co.uk) | [www.hogwoodhouse.co.uk](http://www.hogwoodhouse.co.uk)



# Ruby & Jo

NAMED AFTER HIS LATE PARENTS,  
RUBY & JO WAS FOUNDED IN 2022  
BY LOCAL BUSINESSMAN  
JONATHAN SMALLCOMBE.

Jonathan has many years experience working with range cookers and wanted to create a business specialising in these products. He is always happy to provide specialist knowledge about his products to help his customers. As well as providing a centrepiece to any kitchen, a range cooker can offer much more in flexibility and energy efficiency, especially in the current times.

Visit Ruby & Jo in Southborough and you will find on display a range of cookers to suit your home. Ruby & Jo's are committed to stocking the leading and most efficient brands such as Everhot and Lacanche and can provide expert knowledge of any product in the range.

They can tailor a range cooker to your needs, depending on factors such as size, colour and finish. Ruby & Jo also provide kitchenware to accompany any range cooker. Cookers which are not on display can be bespoke ordered and delivered and Jonathan will be happy to guide you through this process.



## COOKING DEMO - Tuesday 21st March 2023

Ruby and Jo are pleased to invite you to their Everhot Sales event with live cookery from Richard Maggs. You'll get to see just how versatile a modern range cooker can be and have the opportunity to see the cooker put through its paces. For more information and to book your place please call 01892 548000 [sales@rubyandjo.co.uk](mailto:sales@rubyandjo.co.uk)





## NEW SHOWROOM NOW OPEN

55 London Road, Southborough, Tunbridge Wells TN4 0PB

Tel: 01892 548000 Tue - Fri 9am - 5pm | Sat 10am - 4pm

[www.rubyandjo.co.uk](http://www.rubyandjo.co.uk)



# LAYERED SECURITY

BROOK SECURITY EXPLAIN HOW ADOPTING A LAYERED SECURITY APPROACH CAN HELP PROTECT OUR HOMES AND BUSINESSES

**D**id you see my interview on the BBC News following the break in to Raheem Sterling's home? I was talking about footballers and celebrities being targets for criminals due to them living their life in the public eye. We know where they are going to be at different times and for how long they will be there.

Well we are not all footballers or celebrities but we can learn from their experiences when their homes and families have been targeted because of their visibility and predictability.

Not many of us will be featured in glossy magazines or "Through the keyhole" type programmes. But there is a lot we can give away unintentionally on social media. Look at my new car, new house, new watch and jewellery, see me on my city breaks and holidays.

People who live in nice homes, drive nice cars and have nice things will attract attention. Some of the public will be inspired to want to achieve that level of success and others will see you as a "target" thinking about how they can steal the things you have.

We had a client followed home from a shopping trip who was wearing nice clothes and expensive jewellery, driving a nice car. When returning home and with .5 million worth of vehicles on the drive the Police who were following a criminal gang became aware of their new target. They had followed the gang who was following our client.

On the BBC News I talked about "Layered Security". Relating it to layers of clothing we

wear. The more you wear the warmer you are. You can also change the amount you are wearing for comfort. Security is the same. So starting with fences, gates, hedges, lighting (all of which we do not supply) will form part of the layers to help keep you safer.

Electronic Security comprising of External Detection Systems, CCTV Video Surveillance, Intruder Alarms, Hold Up (Panic) Alarms are the layers we can provide. Assisted by Remote Monitoring with a Guarding (Key Holder) Response, and Police Response as required.

Physical Security of locks and bolts, Safe (Panic) Rooms, Fogging technology to fill areas with harmless smoke (fog), security shutters and grilles. Are all obstacles that can be put between you and the Intruder. Creating time delays to allow for Police and Guarding Response to get to you.

The Principles discussed on the BBC News can be used in all situations. It is the scale and depth that will vary depending on the premises and risk of burglary or robbery for the home owner.

Businesses can also be viewed in much the same way so high end businesses (Jewellers, Car Dealerships and others) will have the same considerations. Keeping their staff and stock safe and secure.

**To see more please visit our website:  
brooksecurity.com or to arrange a security  
review of your premises please contact us:  
01622 735974 or 0800 281249 or  
email: enquiries@brooksecurity.com**



# How can you trust an organisation to protect your home or business?

*Who have they worked for before?*



Brook Security Limited have been protecting residential and commercial premises for over 27 years and are NSI Gold accredited for Intruder Alarms and CCTV and Access Control Systems.

Installing more than 5,000 systems across the South East many in listed properties including prestigious historic buildings such as Leeds Castle.

We will have a bespoke solution to protect your home, family, possessions and business



[www.brooksecurity.com](http://www.brooksecurity.com)

01622 735974





## HOW TO...

### REMOVE PAINT FROM BRICK WALLS

*Painting exterior brickwork is often unnecessary and homeowners may wish to restore a wall to its original state.*

- Drape plastic over doors, windows, joinery and plants in the surrounding area.
- Apply NB-410 paint stripper generously to the dry surface with a bristle brush. Work in small areas from the bottom up.
- Allow time for the paint stripper to react and for the paint to soften and bubble. Ideally remove paint with a hot-water pressure washer. Hold close enough to remove the paint, but not too close to damage the brickwork.
- Once the wall is dry apply NB-510 stripper generously with a bristle brush. When the paint is dissolved remove with hot water. A more gentle method than a pressure washer is to use a bucket of hot, soapy water and a scrubbing brush.
- Use a small scraper to carefully remove paint from awkward areas. Use lime mortar rather than cement on an old building or wall.
- Any deposits that are still remaining can be removed by rubbing over with half a brick – preferably one left over from the original wall. Do not be tempted to use a steel brush.



# CREATING A BOOT ROOM

*One of the latest and biggest design trends, a boot room is an extremely practical space, created to house muddy boots and wet coats as well as to hose down mucky pups, both those with fur and those without!*

**S**imilar to utility rooms, boot rooms tend to be less about laundry and more about stopping muddy foot and paw prints entering the house – but really can be any space you can dedicate to connecting your home to the outdoors.

The boot room ideas we've collected below should help you maximise your storage, curb the clutter and keep your home clean and pristine.

## ***What exactly is a boot room?***

A boot room is a space that connects the outside to the inside, and should ideally be accessed directly from the front, side or back of your home. It is a dedicated space to take off boots, shoes and coats before entering the house, as well as a place to store them all. Often a boot room doubles as utility space, too, or it could be an extended porch.

## ***What if you don't have a usable porch or other dedicated room?***

If you've no space for an entire room for coats and boots, how about turning a corner of your hallway or utility

room into a mini boot room? A peg rail hung on the wall will provide ample space for coats and jackets, while boots can be neatly lined up besides free-standing storage. If you have dogs that regularly need walking, create a little 'station' with all the things you'll need such as leads, treats and balls, all stored in easy-to-access baskets.

An alcove in a kitchen, hallway or utility room can be quickly turned into the perfect place to store boots and coats by building a floor-to-ceiling cupboard. While open shelves are often the most popular choice for alcoves, a cupboard with doors means you can hide muddy boots and old coats from sight. Fix a rail inside your cupboard to hang coats on hangers and keep boots on a rack so they can be stored upside down. This will prevent muddy puddles forming.

## ***Making the most of the space***

Boot rooms don't tend to be particularly spacious, so storage is essential. To maximise space, consider made-to-measure units. Going for



*Hush Kitchens*

## SELECT STATEMENT BOOT ROOM FLOORING

A stone floor might be the default option for a country-style room but luxury vinyl tiles in an on-trend pattern are ideal for giving a hall or kitchen with an adjacent boot room a contemporary feel.

*Photo: Harvey Maria, De Witt Flooring*



made-to-measure cupboards and seating means you'll have a space for everything – plus the kitchen sink (a sink is a really handy thing to have in a boot room!) and you won't be trying to shoe-horn your things into off-the-peg units. This ensures you maximise space and don't waste money on storage that doesn't work for your home.

If your boot room is blessed with high ceilings, maximise the full storage potential by taking a vertical approach to cabinetry. Fitting overhead cupboards above a seating area is an efficient solution for items that aren't used daily.

As you'll potentially be putting on walking gear, or towelling-off pets, it's a really good idea to have some seating in your boot room. Not only can you add storage above it, but you can also opt for a seat with built-in storage for yet more space-saving.

### *Keep it simple*

Don't overcrowd a small space: just have the essentials and maybe a few houseplants. Pack away anything you don't use often and keep shoes, boots and coats that you wear most days easily accessible.







*dormyhouse.com*

Stop your boot room becoming a dumping ground for all sorts of sporting attire, footwear and seasonal clothing by meticulously plotting storage provisions using the tips above. Think carefully about what you are storing and ensure every item has a home. Don't forget smaller items like gloves and torches, which are easier to locate in dedicated drawers.

Factor in a small heater or radiator. If you're constantly drying things in the boot room, you'll need a little heat in winter, plus adequate ventilation to prevent condensation.

### *Consider your décor*

Boot rooms are most often positioned next to a kitchen, so it makes sense to replicate the same colours and designs for a seamless transition.

However, if you are wanting to have some fun, these rooms make great spaces in which to experiment with colour. Perhaps you have a favourite colour or shade, or feel like trying something bold but don't want to do it in your main kitchen area? Well, this is the room to try it in.



### *Sims Hilditch*

If your boot room is part of another room, then you can either blend the décor to make it as unobtrusive as possible or make a feature of it with contrasting colours and even faux dividers.


### *Create a puppy parlour*

It might seem a bit extreme, but a dog shower can make a lot of sense. If you're fed up with your pooch traipsing mud through the house after their walk, or are done with having to wrestle them upstairs to the bath, then a dog

shower could be the answer.

Failing that, a sink is a welcome addition to a boot room and can help with muddy paws. Make sure you have lots of storage space for towels and use your boot room for brushing coats and clipping claws, as well to take all the mess away from the main house. If your boot room is sizable you can even make it a cosy haven for dogs, with food bowls, beds and toys to encourage your pet to stay in there until he's fully dry.





Discover your home's potential

*Introducing our*  
Colour Consultancy Service

*N*  
NEPTUNE

Tonbridge, 01732 351866  
[neptune.com/colour-consultancy](https://neptune.com/colour-consultancy)



Viola in pot, £12.49,  
giselagraham.co.uk



Velvet footstool,  
£85, iamfy.co

Pruner holster, £19  
annabeljames.co.uk



Hydrangeas, £39  
lenleys.co.uk



Hops bunch, £37  
neptune.com



Cushion, £85  
juliabrendel.com



Irises mug, £13;  
Copperfields



Emma Bridgewater cake tins,  
£50, johnlewis.com

## Fabulous florals

### GET THE LOOK



Vincent vase, £44  
Copperfields



Recipe tin, £20;  
Copperfields



Handmade brass ginkgo wreath,  
£189, debbiefairbrass.co.uk



Ashley Wilde designs, £25.50  
per metre, emanuels.co.uk



Dahlia bundle, £25  
neptune.com



Dartington Glass jug,  
£52, Copperfields



Kentwell 3 Seater Sofa in RHS Collection Lydia Penrose Design  
£4,477, sofasandstuff.com





Cake stand, £42.99  
kitchencraft.co.uk



Teapot, £47  
portmeirion.co.uk



Wreath £24.99,  
gingerray.co.uk



Marigold tile, £19.50,  
decorumtiles.co.uk



Scented candle, £25,  
lolaesignltd.com



Flower press, £56,  
bluebrontide.com



Oven gloves, £22,  
puretabletop.com



Tealight holder, £14.99,  
giselagraham.co.uk



Floral cushion, £29,  
lukehurst.co.uk



Groovy floral set, George at Asda



Pooky poppies lampshade, £41,  
oohhowlovely.co.uk



Metal floral vintage style  
calendar, £8.95,  
liveloughlove.co.uk



Personalised wooden crate, £36.99  
gettingpersonal.co.uk



Chair, £289,  
cuckooland.com



THE  
WINDOW SANCTUARY  
ENGLAND



SPECIALISTS IN HIGH QUALITY TIMBER WINDOWS & DOORS

CALL US TODAY FOR A FREE NO OBLIGATION QUOTATION

01959 565343

WWW.THEWINDOWSANCTUARY.COM



**Replace that old Conservatory Roof with Activ Blue Glass**

The Revolutionary Self Cleaning Glass that keeps your conservatory **WARMER** in Winter and **COOLER** in the Summer.

**Now with internal HEAT REFLECTIVE GLASS**







**Stunning Bespoke Verandas**

Transform your Patio or Decking area and enjoy your garden all year round. Decorative Brackets and Columns.




Rehau • Windows • Doors • Bifolds • Patios • Coloured GRP Doors • Porches • Conservatories



**FOR FREE ADVICE AND QUOTATION, NO PRESSURE, CALL: 01622 752288**

info@acornglassline.co.uk • www.acornglassline.co.uk • Unit 3, Heronden Road, Parkwood Industrial Estate, Maidstone, Kent ME15 9YR





*Vale Garden Houses*

# Should you add a CONSERVATORY?

IN THIS WRITER'S OPINION: YES! ADDING AN EXTRA ROOM TO YOUR PROPERTY CAN DO WONDERS FOR ITS MARKET VALUE AND CREATE EXTRA SPACE FOR YOUR FAMILY.

**T**his is especially true of period homes because it's usually not possible to add an extension. However, whatever age your home; a conservatory or orangery will really give it the wow factor.

## DESIGN

In recent years the traditional conservatory

(defined as one with walls made entirely of glass) has been overtaken in popularity by orangeries, which have walls built partially of hardwood or stone, and garden rooms, which have a tiled roof. This is mostly to do with efficiency: elevations with partially solid sides help retain the heat in winter, whilst tiled roofs





*Vale Garden Houses*

keep out the glaring sun in summer.

Of course efficiency is all well and good, but the difference is small enough that you shouldn't let such concerns about efficiency sway your personal preference.

Not only do you have a range of choices with regards to design, but you can also afford to be picky when it comes to material. The standard for conservatories is UPVC, which is cheaper than wood and extremely durable but, thanks to modern manufacturing methods, UPVC can also be extremely attractive if designed and fitted by an expert. Of course it's difficult to make UPVC fit with a period home.

***Whatever age your home; a conservatory or orangery will really give it the wow factor.***

The initial outlay involved in achieving a look that is sympathetic to your historic home is usually more with older houses, but the benefits make it well worth the investment.

A good rule of thumb is that any brick work should be in keeping with the existing property and it should be possible for your contractor to match the existing brickwork quite closely. If you don't fancy brick, then a good quality hardwood can be absolutely stunning, evoking the grand style of the earliest orangeries, first made popular in 17th century Italy.

Advances in technology during the



Renaissance had allowed for the creation of large panels of clear glass, which enabled the wealthy to cultivate exotic plants that would otherwise struggle to thrive in Europe (such as oranges of course, hence the name). Traditional orangeries tended to be quite ornate, as they were a symbol of wealth and power. Although you may not want to go as far as putting a water fountain in yours, most modern orangeries take their cue from their predecessors and provide shelter for entertaining in inclement weather.

## DÉCOR

It's important therefore, to consider the décor in your conservatory (a word I shall use as a blanket term for all such buildings from now on) just as carefully as you would any other room in the house.

Although the predominance of glass in traditional conservatories can be limiting due

to a lack of 'proper' wall space, conservatories are extremely versatile when it comes to fabrics, paints and ornamentation. This is particularly the case when it comes to fitting blinds or curtains, as a plain, neutral fabric can be dressed according to changing trends, by adding tie backs or small flourishes.

Whether you keep decoration minimal and put the focus on your exotic plants (orchids are particularly happy in conservatories as long as they're kept sufficiently heated during the winter), or embrace the latest trends with aplomb (a cottagecore conservatory blends indoor and outdoor most seamlessly), you should first consider the intended use of the space.

Is it purely for entertaining? Is it a peaceful haven away from the chaos of the main house? Will it be a children's playroom? Or perhaps a hobby room for one or more household members?



*David Salisbury*



*Above: Acorn Glassline*

*Below: Vale Garden Houses*





*David Salisbury*

### SPACE SAVERS

Whatever the case, you'll undoubtedly want to maximise the given space, and this is where careful planning comes in.

The wall space that's missing in a glass room can be found on the wall of the house itself (the wall onto which the conservatory is built), but if you have large or French doors leading from the house then this space may also be minimal – making it difficult to fit shelves or place larger cabinets etc. In this case consider making the North facing wall of the conservatory solid. This leaves you with all the sunshine afforded by a South facing elevation, but also gives you a full wall for much needed storage.

Also good for space saving are bi-fold doors. These doors can come in as many as six parts depending upon your requirements. Usually made of aluminium, bi folding doors come in a variety of finishes, including wood effect, helping them to blend seamlessly into the surrounding architecture. Long lasting and lightweight, bi folding doors are the ideal solution for those with limited space as they can fold away to within inches of the frame giving you a feeling of light and spaciousness.

Extra space, increased market value and a wonderful way to bring the garden into your home: conservatories are a beautiful and functional addition to any home.





*Above: The Window Sanctuary*

*Below: [westburygardenrooms.com](http://westburygardenrooms.com)*



# Quality installers of aluminium bi-fold & sliding doors, roof lanterns, PVC & sliding sash windows & composite doors throughout Kent

## Visit our showroom:

Let us help enhance your home, visit our new bespoke showroom which displays some of our top quality Home Improvement products. We can help you decide what would be best for your home, or come along and try out the products without feeling pressured.



## Opening Hours:

Monday to Thursday: 9am to 5pm

Friday: 9am to 4pm

Saturday: By appointment only



# ksehome.co.uk

KSE Home Improvements 4 Ashmill Business Park,  
Ashford Road (A20) Lenham ME17 2GQ. Tel: 01622 851400 email: [info@ksehome.co.uk](mailto:info@ksehome.co.uk)



# FROM MIGHTY OAKS...

Orlestone Oak is a company with its roots deep within the Kentish woodlands from which its founders hail, in the Kent Weald near Shadoxhurst.

**W**e've shone a spotlight on many companies in the south-east over the last few years, from stained glass makers and roofing specialists to master masons and traditional tile and brick manufacturers. All have their own fascinating stories to tell, and all have a link to period

properties in some shape or form, for instance providing vital services or products aimed at the niche audience of historic house owners or enthusiasts.

Something they all have in common is how much they value the ethics on which they run their company. It's as if by the very nature





of being involved in the 'heritage' world, the importance of doing things beautifully and correctly and with attention to how it impacts on, not just the present but the future too, is instilled into the culture of the company.

Our latest subject is no exception to this roll call:

Orlestone Oak is a company with its roots deep within the Kentish woodlands from which its founders hail, in the Kent Weald near Shadoxhurst. Well over 60 years ago, the father of Barrie Barton, the current Managing Director of Orlestone Oak, was involved in transporting timbers that were mainly props for the mining industry. Barrie became involved in the felling of trees, and the family business that started from humble beginnings has developed from there.

Some years later the company diversified by producing oak beams for the oak frame

buildings' market. The range was further extended as the business grew, becoming one of the first oak frame building companies in the country, manufacturing houses and extensions, garages, porches, gazebos and balconies.

***“Jack’s passion for the timber at the heart of almost everything they manufacture is evident.”***

This impressive range doesn't stop there: Orlestone also produces beautiful bespoke joinery including windows, doors, stairs, kitchens and furniture. Added to that is a comprehensive range of solid oak flooring that boasts not just standard width boards but specialist giant boards with widths up to 350mm and 6m long, ideal for historic buildings

or period property projects. All boards are manufactured on site in Kent and exquisitely hand-finished with 30 colour choices.

Exteriors are also well catered for. Orlestone's decking boards are available in up to 4m lengths and come in a variety of grades and profiles.



This is all true for the company's cladding range as well, with a wealth of styles and finishes to enhance both contemporary and traditional houses.

Barrie's son Jack is now a director of the company, having been introduced as a young boy to the business in the time-honoured tradition of all family firms, learning the ropes at his father's side and working his way up from basic jobs like splitting 'rounds' for firewood, to learning how everything is run, including the sawmill, all aspects of production and buying timber. He's justifiably proud to be able to say that at one

time or another, he's worked in every area of the company and knows what each role entails. He believes this is crucial, as it's important when running a business that you never ask anyone to do something you haven't done yourself.

The team seems relatively small, with 15 full-time members in a company that produces such a wide range of high-end and top-quality products, but maybe the emphasis is on quality in the workforce, too, as they are all long-stayers, many having been with Orlestone for over a decade. One team member of particular note, Ron, has been with the company since it



Jack's passion for the timber at the heart of almost everything they manufacture is evident. He mentions his awe when he surveys the mighty oaks that have taken so many years to grow. He says it gives a different perspective on life when seeing the new young trees that are continually planted to ensure there are always mature ones to be harvested - trees that will still be standing tall long after we are gone!

started more than 60 years ago. Jack says, a little reluctantly because he thinks it sounds corny, that the close-knit team is like a big family and they all pull together to create Orlestone products they can be proud of. Nevertheless, the sentiment is there, corny or not! Once again, there's that commitment to heritage and care for quality that shines through in this type of family business.

Barrie and Jack visit forests in northern France and the UK to personally inspect and select the oak trees that end up in the company's sawmill in Kent. They believe this is vital to maintaining the highest quality of finished products. Oak is a naturally resilient hardwood, with an incredibly dense structure, so it doesn't require any chemical treatment to preserve it. Instead, it is kiln-dried, which means the beautifully hand-crafted Orlestone products have a natural longevity.

The oaks are from a managed and sustainable source that is on a grand scale. Orlestone's awareness of trees as a valuable resource speaks of the care taken to minimise their impact on the environment. As they grow the oaks capture harmful carbon, removing it from the atmosphere; it is then locked into the timber that is used to make products. Great care is taken to reduce waste throughout the manufacturing process, making sure everything has a use. Even the sawdust is used in the biomass boiler to run the kilns that dry the timber.

Having said all this, you can see reflected in the beauty of Orlestone Oak's products the honesty and integrity shining through the gorgeous golden-toned, handcrafted wood. If ever the saying 'mighty oaks from little acorns grow' could be applied to a family business, it is justified here. Long may it flourish and stand tall!  
*For more info go to: [orlestoneoak.co.uk](http://orlestoneoak.co.uk)*





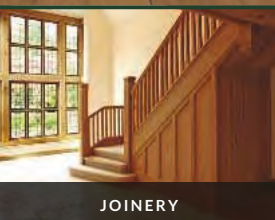
ORLESTONE OAK

KENT · ENGLAND



# Bespoke Flooring

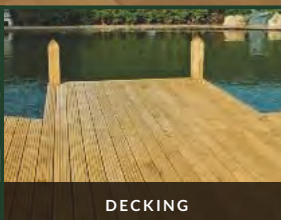
LONG & WIDE · PRODUCED IN KENT · FINISHED BY HAND



JOINERY



OAK FRAMED BUILDINGS



DECKING



CLADDING

For more information on pricing or fitting, or to place an order

CALL **01233 732179** VISIT **[orlestoneoak.co.uk](http://orlestoneoak.co.uk)**



# PRELUDE STONE

CRAFTSMANSHIP FOR YOUR HOME

Brick... Stone... Stucco...



From: failed brickwork to crumbling stucco; stained stonework to cracked lintels;  
natural stone to precast detailing; brick matching to artisanal pointing;  
heat damage to persistent damp; fire surrounds to chimney stacks;  
townhouse to terrace; country cottage to listed building; old paths to new extensions...

...our craftsmen are ready to clean, restore, renovate or conserve



*A family company of craftsmen, with over 30 years' experience working across London & the Home Counties*

Prelude Stone Ltd. Unit 2, Westerham Trade Centre, The Flyers Way, Westerham Kent, TN16 1ET

[www.preludestone.co.uk](http://www.preludestone.co.uk)

[info@preludestone.co.uk](mailto:info@preludestone.co.uk)

01959 580360

# REVIVING THE PAST

JANE ELIZABETH ARCHITECTS BEING SITUATED IN THE GARDEN OF ENGLAND HAVE MUCH EXPERIENCE WITH THE EXCITING PROCESS OF GIVING NEW LIFE TO THE MANY REDUNDANT FARM OUT BUILDINGS THAT EXIST IN THE COUNTY.

**R**eviving and adapting a Kent barn from agricultural to residential use has so many opportunities as barns can make exceptional open planned family spaces. The challenge in the restoration of a historic building is to bring the benefits of 'modern know how' whilst respecting the spirit of the past through using traditional materials and a focus on the architectural individuality of the property.

Jane Elizabeth Architects have built up over the years a comprehensive knowledge in property conservation. Their expertise enables them to bring imaginative and working solutions to achieve the aspirations of their clients in realising their dream home.

A recent renovation was completed on a mixed period circa 16th /19th threshing barn. A particular feature of traditional Kent barns are that they have internal bays that need to be maintained within the barn's development. This barn was formed of five bays around the original work hall where all of the threshing of crops would have been carried out. In this central space, we were able to create, as seen in the photograph, a spacious and very light kitchen area which is at the heart of this family home. The crucial first step when converting any barn is the detailed timber assessment. All of the timber frame, principal rafters, angle struts and oak collars are carefully recorded and deemed to be repaired

or replaced. There is emphasis on handmade joinery to ensure the craftsmanship of the past is conserved. The attention to detail that JEA produces in their plans and drawings ensured the character and beauty of this 500 year old building is brought to life through its timber in the most stunning way.

**Contact us on 01622 884373**

**Mobile: 07715 860787**

**[www.janeelizabetharchitects.co.uk](http://www.janeelizabetharchitects.co.uk)**





**Jane Elizabeth Architects** RIBA   
Chartered Practice



Develop and utilise your property  
making designs into reality

Architectural services  
Planning permission • Building regulations •  
Listed building • Barn conversions & much more

Contact us on 01622 884373 Mobile: 07715 860787  
Email: [janeelizabetharchitects@gmail.com](mailto:janeelizabetharchitects@gmail.com)  
[www.janeelizabetharchitects.co.uk](http://www.janeelizabetharchitects.co.uk)



Specialists in  
traditional lime mortars,  
gauged brickwork,  
stonemasonry and all  
associated crafts

Visit our website for full listings and current projects  
01622 859794 | [www.kcrltd.com](http://www.kcrltd.com) | 07831 236228  
email: [info@kcrltd.com](mailto:info@kcrltd.com)



**Kent Conservation & Restoration Ltd**  
Historic Building Craftsmen



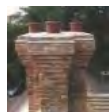
**EMPLOYED SKILLED WORKFORCE | RENOVATIONS & EXTENSIONS  
CONVERSIONS & ALTERATIONS | DESIGN & BUILD**





**A.T. PALMER LTD** T: 01233 770077  
RESTORATION SPECIALISTS EST.1949 Smarden Business Estate, TN27 8QL

[atpalmer.co.uk](http://atpalmer.co.uk)



## H&G CHIMNEY SERVICES

- Chimney sweeping service • Long established
- ICS registered • All types of flue • All pots-cowls supplied & fitted • Complete re-builds
  - Re-pointing • Guttering, roof & valley repairs

01622 739439 or 07860 318166  
info@chimneysweepkent.co.uk

## HOOD'S TREE SERVICES LTD

TREE SURGERY SPECIALISTS

### Services include:

- Tree reductions and felling
- Stump grinding
- Hedge cutting and removal

**NPTC qualified and fully insured**  
**Free quotes and advice provided**

info@hoodstrees.co.uk - www.hoodstrees.co.uk  
01622 744149 - 07590 461382

## THE WINDOW MAN

- Glass supplied and fitted
- Greenhouse glass supplied and fitted
- Sash cords and mirrors supplied and fitted
  - New handles supplied and fitted
- Double glazed units repaired and fitted
- Lead lights and stained glass repaired

Established 50 years

Call: 07961 442810 johnnytheglass@gmail.com

## SOUTHGATE ELECTRICAL CO. LTD

*The Best Electrical Services*

*Offering a full range of electrical services  
from design to installation*

- |                         |                 |
|-------------------------|-----------------|
| ■ External Electrics    | ■ New Builds    |
| ■ Access and Security   | ■ Space Heating |
| ■ Electric Showers      | ■ Fire Alarms   |
| ■ Landlord Certificates |                 |



T: 01227 712790 / 07889 895394

www.electricians-canterbury.com



## WAREHAMS

Antique Garden Ornament - Gustavian Furniture

68 Oxford Street - Whitstable, CT5 1DG  
Mobile: 07831 210139  
www.warehams.com



## Georgian Brickwork

**Specialists in  
Conservation & Heritage Brickwork**

Skilful repairs to listed & period properties  
using

traditional methods and materials

Charles: 07732 975 349

www.georgianbrickwork.co.uk

## PATHFINDER PLUMBING

**Posh Pipes are our Passion**  
**Big and Little Jobs in East Kent**

07774 859591  
plumbpathfinder@gmail.com  
 plumbpathfinder

## WE BUY UK GOLD COINS

We specialise in British coins only  
Complete discretion applied  
One Sovereign or whole collections  
Any UK denomination  
Cash or Bank Transfer  
We can come to you or you to us.  
Full Identification will be required –  
Passport or Driver Licence

**Call Colin on 07718511111**

**We are the UK's leading restorer and repairer of traditional, distinctive oast cowl & kiln roofs.**

New cowl construction. Painting & cleaning. Repair & maintenance. Also specialising in Kent peg tile roof repairs and kiln tile repairs.

Trusted over four family generations by royalty, businesses & homeowners alike.



Book a no-obligation visit  
01622 725 898 / 07973 332 790  
[www.dudeandarnette.co.uk](http://www.dudeandarnette.co.uk)



**DUDE & ARNETTE**

OAST COWL CONSTRUCTION



Oast owners

**ASH**  
SCAFFOLDING LTD

Conservation  
Scaffolding Specialists



Smarden Business Estate, Smarden, Ashford TN27 8QL  
Tel: 01233 770373 email: [info@ashscaffoldingltd.co.uk](mailto:info@ashscaffoldingltd.co.uk)  
[www.ashscaffoldingltd.co.uk](http://www.ashscaffoldingltd.co.uk)



# STEPPING OUT

A round up of what's going on in Kent this spring.

## 18TH & 19TH MARCH

### **Mother's Day Weekend, Hever Castle**

Spoil mum on Mother's Day weekend with a memorable family day out. Treat her to a delicious meal or simply enjoy quality time together in the Castle and Gardens.

[www.hevercastle.co.uk](http://www.hevercastle.co.uk)

## 19TH MARCH

### **Mother's Day, Kent & East Sussex Railway**

Travel aboard the special Mothers' Day steam trains for a journey the entire family will enjoy! Choose from a Ploughman's Lunch or a Cream Tea served at your seat in the comfort of our heritage carriages. Your train will travel through the beautiful Rother Valley from the historic Market town of Tenterden to the pretty country station at Bodiam.

[www.kesr.org.uk](http://www.kesr.org.uk)



## 19TH MARCH

### **Mother's Day, Romney, Hythe & Dymchurch Railway**

Treat mum this Mother's Day, not only will she be able to take a seat and travel along the line being pulled by a world famous steam locomotive but she will also get the chance to drive the train. [www.rhdr.org.uk](http://www.rhdr.org.uk)

## 25TH MARCH

### **Live and Let Dine, Leeds Castle**

Get ready to be transported right into a classic Bond action scene. Throughout the night you will be front and centre as the action unfolds, whilst eating delicious food and savouring themed cocktails, all whilst wearing your best. From £125 per person.

[www.leeds-castle.com](http://www.leeds-castle.com)

## 27TH MARCH

### **Spring Wreath Workshop, Belmont House**

This two hour workshop is the perfect opportunity to craft a handmade, everlasting wreath with Nancy, Box & Bloom. Nancy will take you through the steps to attach a gorgeous selection of dried foliage and flowers to your wreath ring, helping you to create a stunning hanging wreath, or table centre. £60 per person.

[www.belmont-house.org](http://www.belmont-house.org)

## 1ST APRIL

### **Easter Egg Hunt, Sissinghurst Castle**

Hop, skip and jump your way round our fun family Easter egg hunt, with seasonal games and interactive activities along the way. Don't forget to pick up your chocolate egg from the Shop when you're finished! Trails are £3 and can be purchased at Visitor Reception.

[www.nationaltrust.org.uk](http://www.nationaltrust.org.uk)

## **1ST - 6TH APRIL**

### **Easter Adventure, Dover Castle**

Join in a cracking adventure quest at Dover Castle this Easter holiday. Explore the castle to hunt for clues and challenges and discover traditional Easter games like egg rolling and the egg and spoon race. Track down the Easter eggs and you'll be rewarded with an adventurer's certificate and a tasty chocolate treat. [www.english-heritage.org.uk](http://www.english-heritage.org.uk)

## **1ST - 16TH APRIL**

### **Easter at Leeds Castle**

Fill up on warm hot cross buns with melting butter, sneak a pinch of the Easter chocolate, and pop on your scarf, as you get ready to head to Leeds Castle to make new spring memories with the family. [www.leeds-castle.com](http://www.leeds-castle.com)

## **1ST - 16TH APRIL**

### **Easter at The Dockyard, Chatham Dockyard**

Spring is in the air, and dozens of mystery eggs have been laid across the Dockyard. Follow their trail and solve the puzzle to gain access to the secret Kraken's Lairy. [www.thedockyard.co.uk](http://www.thedockyard.co.uk)



## **1ST - 16TH APRIL**

### **Spring into Easter, Kent Life Heritage Farm Park**

Celebrate Easter and the baby boom that comes with spring. Meet the Kent Life lambs and goat kids and watch a bottle-feeding demonstration. Guests can enjoy a fun farm ride and get creative in the Paint A Pot studio. From Friday 7th to Monday 10th April, the Easter Bunny will be visiting. Don't forget to catch a show in the Big Top tent too. [www.kentlife.org.uk](http://www.kentlife.org.uk)

## **1ST - 19TH APRIL**

### **Easter Family Fun, Hever Castle**

Enjoy family entertainment throughout the Easter holidays including a bunny quest and free craft activities. [www.hevercastle.co.uk](http://www.hevercastle.co.uk)

## **7TH - 10TH APRIL**

### **Easter Escapades, Dover Castle**

Join performers at Dover Castle for four days of Easter fun. There'll be plenty of opportunity for the whole family to get involved in traditional games, activities and races, along with storytelling sessions throughout the day. [www.english-heritage.org.uk](http://www.english-heritage.org.uk)

## **9TH APRIL**

### **Easter Egg Hunt, Belmont House**

Join the Easter fun at Belmont House. Explore the gardens and search for the wooden eggs to win a chocolate treat, then head back to the Orangery to get crafty with Easter themed activities. £6 per child, £3.50 per adult. [www.belmont-house.org](http://www.belmont-house.org)

## **10TH APRIL**

### **Easter Arts & Crafts Fair and Easter Egg Hunt, Whitstable Castle**

Join in the annual Easter Arts and Craft Fair in the castle's beautiful gardens. There's also an Easter Egg Trail 12-3pm (£3.50 per child) and Easter Craft Workshops (donation of £1 per child). The Orangery Tearooms will be open all day serving delicious breakfasts, lunches, cream teas etc. [www.whitstablecastle.co.uk](http://www.whitstablecastle.co.uk)

## **15TH APRIL**

### **Murder Mystery Evening, Whitstable Castle**

As soon as you enter the Castle, colourful and entertaining characters (played by professional actors) welcome you to your tables and into a fictional world of mystery and intrigue. Ticket Price £49.50 per person, includes welcome cocktail & canapes, 2 course meal and first-class entertainment. [www.whitstablecastle.co.uk](http://www.whitstablecastle.co.uk)

## **17TH - 23RD APRIL**

### **Tulip Celebrations, Hever Castle**

Be uplifted by 40,000 tulip bulbs proudly standing to attention and providing a visual feast of spring colour. Free daily tours with the gardeners can be enjoyed as well as tulip floral arrangements in the Castle. [www.hevercastle.co.uk](http://www.hevercastle.co.uk)

## **22ND APRIL**

### **Seasonal cooking, Neptune, Canterbury**

Join Sijmon from Macknade Food Hallm on the Green Egg. Woolton Farm Winery will be offering samples to complement the food. [www.neptune.com/ourstores/uk/canterbury](http://www.neptune.com/ourstores/uk/canterbury)



## **29TH APRIL - 1ST MAY**

### **May Day Weekend, Hever Castle**

Hever Castle's May Day Festival incorporates traditional celebrations to welcome the summer. [www.hevercastle.co.uk](http://www.hevercastle.co.uk)

## **6TH MAY**

### **Coronation of King Charles, Kent Life Heritage Farm Park**

Watch the Kings Coronation on a big screen in the Big Top! Sit back and relax as you drink Pimm's, devour a cream tea and take part in other Royal activities across site. [www.kentlife.org.uk](http://www.kentlife.org.uk)

## **6TH - 8TH MAY**

### **King's Coronation, Hever Castle**

Celebrate the King's Coronation in the beautiful grounds of Hever Castle. [www.hevercastle.co.uk](http://www.hevercastle.co.uk)

## **7TH MAY**

### **Steam Event Day, Wormshill & Bredgar Railway**

See the Steam Locos in action, pulling passenger carriages through the parkland and woodland at Bredgar Railway. The Engine



Shed and museum will be open displaying our collection of vintage tractors, locos, engines and cars as well as the hugely popular model railway. The main field showcases the visiting exhibitor engines, the resident American Aerial Ladder Fire truck as well as tractor and trailer rides. [www.bwlr.co.uk](http://www.bwlr.co.uk)

### **18TH - 21ST MAY**

#### **Spring Craft Fair, Hever Castle**

Discover around 140 exhibitors from the UK's finest designer makers and contemporary artists at this spring craft fair based in the Kentish countryside.

[www.hevercastle.co.uk](http://www.hevercastle.co.uk)

### **20TH MAY**

#### **How to use watercolour, Neptune, Canterbury**

Join Imogen as she guides you through the art of using water colour. You will bring a photo of your home or favourite building. For

the morning you will be provided with all the tools to create your very own masterpiece whilst sitting and relaxing with refreshments in the showroom.

[www.neptune.com/ourstores/uk/canterbury](http://www.neptune.com/ourstores/uk/canterbury)

### **27TH MAY - 4TH JUNE**

#### **May Half Term, Kent Life Heritage Farm Park**

Get up close and personal with nature. Pop on the wellies and join the farm's resident bug hunter for a weekend of creepy crawly fun. Guests will be able to get involved in scavenger hunts, visit critter corner, attend Forest School, listen to campfire stories and so much more. [www.kentlife.org.uk](http://www.kentlife.org.uk)

### **27TH MAY - 4TH JUNE**

#### **Monster Crafts, Chatham Dockyard**

Weigh anchor and cast your nets for some monstrosously crafty fun as you create your very own Monsters of the Deep. [www.thedockyard.co.uk](http://www.thedockyard.co.uk)

# **BREDGAR WOOD FAIR**

## **19th & 20th August 2023**

A new Wood Fair Weekend with unique demonstrations, exciting exhibits, competitions, activities and stalls. Set in the beautiful woodland and parkland in the heart of the Kent Downs.

Hosted by the Bredgar and Wormshill Light Railway  
in conjunction with Old English Tools,  
at Bredgar in Kent (ME9 8AT).

TICKETS AVAILABLE ON THE WEBSITE:  
[www.bwlr.co.uk/next-open-day/](http://www.bwlr.co.uk/next-open-day/)



## **Old English Tools**

[www.bwlr.co.uk](http://www.bwlr.co.uk)



# Introducing Harmony Maidstone

CONFIDENCE THROUGH CREATIVITY



Kent based, Events Promoter and pioneer for Arts and Inclusivity, Zoe Sparkle is delighted and proud to announce the re-opening and launch of Harmony Maidstone on Saturday 10th June, with a preview VIP night on Friday 26th May 2023.

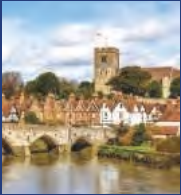
Originally a humble idea by John A Kingdon, Harmony has now evolved into a multi-awarded and celebrated Charity, boasting its own fully functioning impressive 96 seat theatre. Originally a 1920s Church and a

1960s Boxing Gym situated on the outskirts of Maidstone, John painstakingly converted St Hilary's Hall in 2004, as described in his published book, "The Clot that Almost Killed Me".

Since 2022, Zoe has now updated and transformed the welcoming creative space to offer affordable classes and community events in Arts and Education to all ages and backgrounds. Harmony is a community project, held together by a dedicated team of volunteers and supported by the Council and a growing list of Businesses and fellow Charities.

During a "cost of living" crisis, it is inspiring to see Harmony Maidstone thriving as an inclusive and life-changing charity.

*For more information, please contact Harmony Maidstone Press Officer, Krystina Poliszuk at [Krystina@live.co.uk](mailto:Krystina@live.co.uk) or 07507 886 780.*



# Supporting the Kent community for over 235 years

Whitehead Monckton solicitors are based in Tenterden, Canterbury, Maidstone and London providing specialist legal services to individuals and businesses. Our clients tell us we are good listeners and great lawyers, but don't take their word for it.

## If you would like help with:

- Wills
- Tax & Estate Planning
- Probate
- Family
- Residential Conveyancing

## If your business needs help with:

- Contracts & Transactions
- Property
- Licensing
- Employment



## Call Maidstone 01622 698000

or visit [www.whitehead-monckton.co.uk](http://www.whitehead-monckton.co.uk)

info@whitehead-monckton.co.uk  
5 Eclipse Park, Sittingbourne Road, Maidstone, Kent, ME14 3EN



# How to better communicate as separated parents

*We understand that communication between co-parents can be difficult and tense especially when the relationship did not end on amicable terms.*



**T**his is a common cause of children matters ending up in court and results in significant legal costs and causes distress to the entire family.

One way of communicating to reduce any potential conflict is through family Apps. There are more and more of these types of

Apps coming onto the market each year. We recommend these Apps to many of our clients as a safe and secure way of discussing the arrangements for their children to spend time with the other parent or to update each other on any important information that the other parent will need to know – such as changes in

schedule, health concerns, appointments, school trips etc. Judges, justices, and magistrates globally are increasingly ordering families in contested children matters to use such Apps to prevent and reduce conflict and to ensure a secure method of communicating between co-parents and other parties such as grandparents, step-parents etc.

Two apps which many courts have recommended and our clients have used are: AppClose and OurFamilyWizard. Below is a summary of the key features of both Apps:

### **APPCLOSE:**

AppClose has a variety of features such as:

- a calendar to ensure co-parents and family members are aware of any key events occurring;
- a text messenger feature that keeps an accurate record of any communication without it being altered or deleted which can be helpful if any correspondence is needed to be used as evidence in court;
- audio and video calling features for the child to be able to have regular phone/video calls with the other parent - for added security your location is never shared;
- a request's feature which allows you to request any reimbursement of expenses such as medical expenses, extracurricular activities etc.

*Also this app is free!*

<https://appclose.com/>

### **OURFAMILYWIZARD (OFW):**

OFW offers different types of accounts to suit your needs, such as: parent accounts; third

party accounts for step-parents, grandparents and extended family members; child accounts to allow children to view the family calendars and exchange messages with other family members and practitioner accounts to allow practitioners such as your solicitors, barristers, mediators and family therapists to oversee any communication.

OFW has many features similar to those for app close as well as a Journal section where you are able to document last minute schedule changes or share memories with your co-parent and an information bank where you can keep all important family information in one place such as medical history, insurance information, emergency contacts, school schedule etc.

You are able to sign up to a 1 year subscription starting at £79.

<https://www.ourfamilywizard.co.uk/>

There are of course many other providers on the market and we recommend you do a full search before deciding on using a particular brand to make sure that it meets you and your separated partner's needs.

If you have found any of the information in this article helpful and you would like an initial discussion with someone from our friendly family team, please do not hesitate to get in touch by calling 01622 698000.

 **Whitehead  
Monckton**



A STRIKING DETACHED GRADE II LISTED GEORGIAN FARMHOUSE

## Springhill Farm, Benenden

**T**he Georgian facade of this striking Grade II Listed family home is believed to date from the 1820s as an addition to the 18th century core. The features throughout the house are synonymous with the era, such as high ceilings, picture rails, panelled sash windows and decorative fireplaces. A number of exposed floorboards are believed to be reclaimed from the 16th century.

The accommodation is presented in immaculate order throughout and consists of an entrance hall with a 19th century staircase with scroll tread ends, drawing room with decorative fireplace and sixteen panel sash window, double aspect sitting room, double aspect wood panelled study, a triple

aspect kitchen/dining/family room with a supplementary kitchen and pantry, ideal for entertaining; there is also a boot room with doors to the garden, and a cloakroom on the ground floor. A cellar with natural light is used as additional storage.

Two staircases lead to the first floor where a spacious landing provides a seating area and floor to ceiling storage. There is a double aspect principal bedroom with decorative fireplace, dressing room and bath and shower room also with a decorative fireplace, there are four further double bedrooms, one with an ensuite shower room, a family bathroom and a family shower room.

There is a drive that leads to the farm hamlet











and garaging and log store. A gate from the shared drive opens onto a gravel drive which sweeps across the front lawn to the house. Sitting in approximately two acres of attractive garden with trimmed hedgerow, mature shrubs and fruit trees. Within the garden there is a swimming pool with paved terrace and pool house. The pool house has been well appointed providing a bar and sitting room, kitchen with door to the terrace, double bedroom and shower room. The bi-fold doors to the front and side of the pool house open onto the terrace creating a stunning alfresco entertaining space. A sauna and hot tub complete the experience.

In addition to the two acres of garden, across the drive, there are approximately 12 acres of agricultural land divided into three paddocks.

## The details

Entrance hall | Drawing room | Sitting room | Study | Kitchen/dining/family room | Supplementary kitchen | Pantry | Boot room | Cloakroom | Cellar | 6 bedrooms | 5 bathrooms | Swimming pool | Double garage | Gardens and grounds approximately 14 acres.  
Guide price £2,650,000

Viewing by appointment only

Harpers and Hurlingham

The Corner House, Stone Street,  
Cranbrook TN17 3HE

Tel: 01580 715400

[www.harpersandhurlingham.com](http://www.harpersandhurlingham.com)





*The best of Kent's food and drink experiences including restaurants, bars, cafés, pubs, farm shops, delis, butchers and markets, as well as recipes and local produce.*



THE  
**EIGHT BELLS**  
HAWKHURST



**OPEN WEDNESDAY TO SUNDAY  
FROM 12PM\***

**FOOD SERVED ALL DAY**

GIVE US A CALL ON

**01580 389039**, VISIT OUR WEBSITE

**WWW.THEEIGHT-BELLS.COM**

OR DROP IN TO BOOK.

**THE EIGHT BELLS, THE MOOR,  
HAWKHURST, TN18 4NX**

### **WEEKDAY MARKET MENU**

ENJOY 2 COURSES OF OUR AMAZING  
LOCALLY SOURCED FOOD  
FOR JUST £15.

SERVED WEDNESDAY - SATURDAY  
12-5.30PM

### **SPECIALITY STEAK MENU IS BACK!**

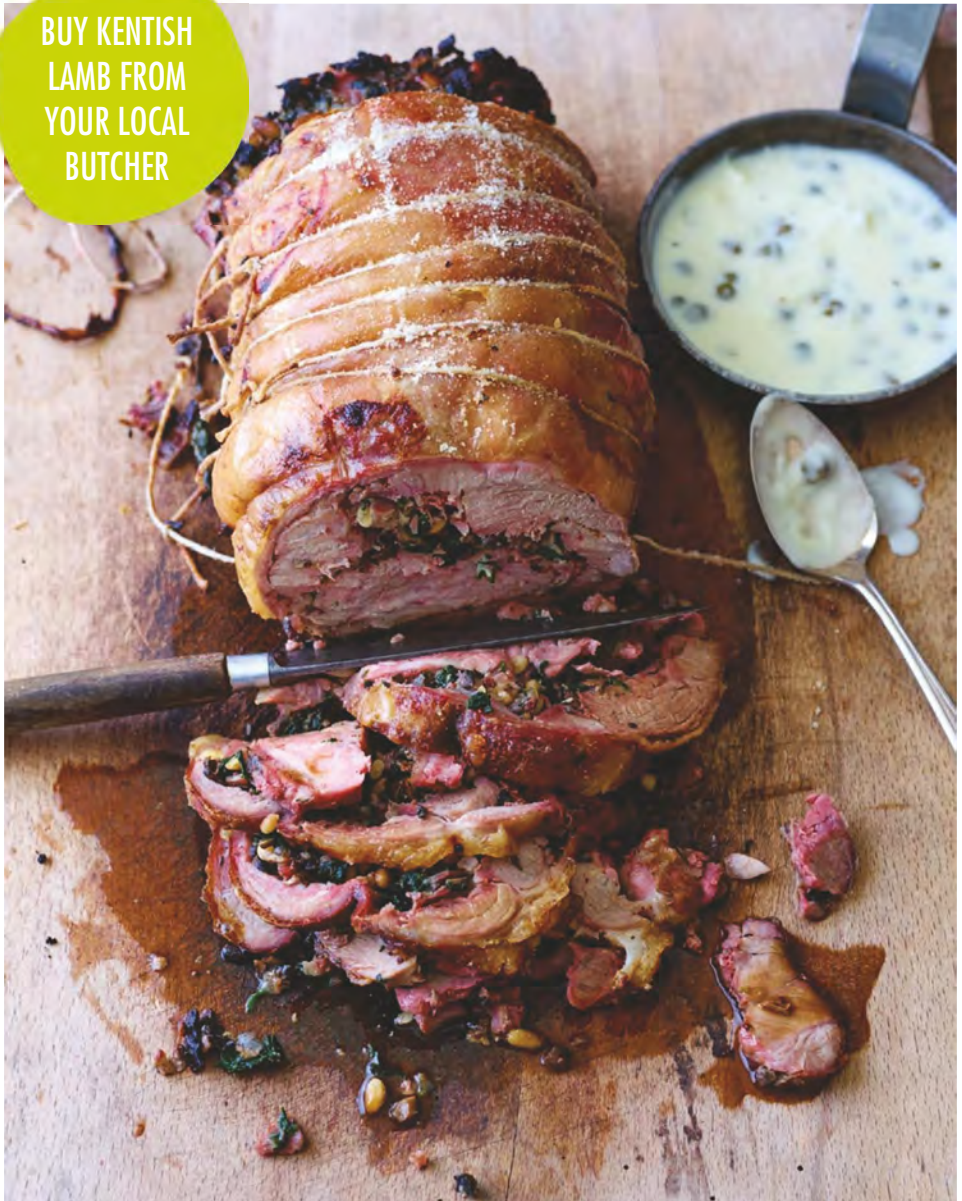
USING THE BEST BEEF PRODUCED  
IN KENT AND EAST SUSSEX. OUR  
SPECIALITY STEAK MENU IS BACK  
EVERY THURSDAY.

SERVED ALL DAY FROM 12-9PM.





BUY KENTISH  
LAMB FROM  
YOUR LOCAL  
BUTCHER



A lovely roast for Sunday lunch and a great dish to serve at Easter. If your butcher is as friendly as mine and if you give them notice they may happily incorporate your stuffing, then roll and tie the joint for you. Redcurrant sauce is an alternative to caper sauce in which case Gratin Dauphinoise would be a perfect accompaniment. *Recipe from The Get Ahead Cook by Jane Lovett, with photography by Tony Briscoe. Published by Whitefox Publishing.*



SERVES

6-8

## YOU WILL NEED

### *For the stuffing*

Olive oil

1 onion, chopped

4 rashers streaky bacon,  
snipped into thin strips

2 cloves of garlic, crushed

2 sprigs of rosemary

200g chestnut  
mushrooms, chopped

250g baby spinach,  
wilted, squeezed dry and  
chopped

Handful of pine nuts,  
toasted

Salt and pepper

### *For the caper sauce*

40g butter

40g plain flour

700ml milk

3tbs capers, plus juice

Handful of spinach or  
wild garlic leaves, thinly  
shredded (optional)

## HINTS AND TIPS

*Redcurrant sauce is a lovely alternative.*

*Bring 4tbs redcurrant jelly, 4tbs red wine vinegar and 750ml lamb or chicken stock to the boil; simmer until reduced by half. This can be made up to four days ahead, or frozen.*

# STUFFED SHOULDER OF KENTISH LAMB WITH CAPER SAUCE

## METHOD

Preheat oven to 220°C/180°C fan/gas 7. To make the stuffing, heat a little olive oil in a pan, add the onion and bacon and cook for about 10 minutes, stirring occasionally, until softened. Add the garlic, rosemary and mushrooms, and fry until all the liquid has evaporated. Add the spinach and pine nuts. Taste and season well. Tip onto a plate and spread out to cool.

Meanwhile, open out the shoulder, skin side down and trim off all excess fat. Butterfly any thicker fleshy bits by slashing and opening them out. When the stuffing is cold, spread over the meat, distributing it into all the nooks and crannies and fold the loose flaps back in, over the stuffing. Roll up tightly and secure with string, starting in the middle and working outwards equally and alternately along each side, at roughly 2.5-4cm intervals. Then tie once along the length of the joint.

Put the lamb into a roasting tin, rub with a little salt and cook for 1 hour 5 minutes. Remove to a cold plate and leave to sit for 10 minutes to stop it cooking. Then keep it somewhere warm to rest for a minimum of 30 minutes. Skim off the fat in the roasting tin and pour the juices into a jug.

To make the sauce, melt the butter in a saucepan, stir in the flour to make a roux and cook for a minute. Gradually whisk in the milk and season. Bring to the boil, stirring or whisking all the time until thickened. Add the capers with a little of their liquid. If the mixture is too thick, thin it down with a little more milk. Cover and set aside.

Just before serving, reheat the sauce adding a little more milk, if necessary, to achieve a pouring consistency, and add any juices from the plate the lamb is resting on. Stir in the spinach or wild garlic leaves and transfer to a serving jug.

Slice the lamb and arrange on a platter, pour over the reserved pan juices and serve with the caper sauce.



The perfect accompaniment to spring and summer BBQs, this light and fresh salad is a crowd pleaser and will make your heirloom tomatoes the star of the dish. Combined with a creamy, fragrant dressing and crunchy sourdough croutons, this salad comes together in just a few short steps and can be prepped in advance of your get together.

# GROW YOUR OWN

## spring menu

Growing your own is a great value way to get nutritious food on your dinner table that's packed full of flavour and is good for both you and the environment.

The UK's leading garden centre, Dobbies, has put together two tasty spring dishes to inject some freshness into your mealtimes. Whether you've grown some delicious heirloom tomatoes, vibrant carrots, or fragrant herbs, check out these mouth watering recipes that are perfect for outdoor entertaining and get creative with your crop.

**SERVES**  
**4**

### YOU WILL NEED

#### *For the salad*

3 tbsp extra virgin olive oil  
2 chicken breasts  
2 tbsp dried oregano  
500g selection of mixed heirloom tomatoes  
2 slices sourdough bread, cubed  
1 small red onion, thinly sliced  
1 tbsp small capers  
10g fresh dill, chopped

#### *For the dressing*

100g Greek yoghurt  
4 tbsp mayonnaise  
1 clove garlic, crushed  
2 tbsp white wine vinegar  
10g fresh chives, finely chopped

## HEIRLOOM TOMATO, HERB & CHICKEN SALAD

### METHOD

Preheat oven to 200c/180c fan assisted. On a baking tray, mix the sourdough with 2 tbsp of olive oil and season well. Bake for 7 minutes or until golden. Remove and let cool.

Slice the chicken into two pieces lengthways. Drizzle with olive oil, season and then add the oregano. BBQ for 4 minutes on an outdoor grill, or use your oven grill, then let cool and slice into pieces.

In a small bowl combine the dressing ingredients and season to taste.

Use a large platter to arrange the tomatoes, sourdough croutons, red onion, capers and chicken. When close to serving, pour over the dressing and sprinkle with the dill and any leftover chopped chives.





When it comes to growing your own, there's nothing more rewarding than cooking a delicious meal with the fruits of your labour, and what better way to enjoy it than with family and friends?

**SERVES**  
**4**

## SMOKED SALMON, CREAM CHEESE & WATERCRESS FILO TART

### YOU WILL NEED

#### *For the tart*

2 red onions, thinly sliced

2 tbsp extra virgin olive oil

4 long sheets of filo pastry (approx. half of a 270g pack)

100g butter, melted

100g pack smoked salmon ripped into chunky pieces

150g chopped watercress with large stalks removed

#### *For the custard*

3 eggs

100g cream cheese

200g double cream

zest of 1 lemon

20g fresh dill, stems removed and leaves chopped

### METHOD

Preheat the oven to 180c/160c fan assisted and place a flat baking tray in the oven to heat. In a large frying pan, heat the olive oil and then add the onions and some seasoning. Sauté on a medium low heat until caramelised, about 10 minutes.

Brush the sheets of filo with melted butter and drape over a tart tin, leaving the excess to overhang. Continue until you use all the sheets and press the pastry down gently into the tin. Then add in the salmon, onions and watercress.

In a large bowl whisk the custard ingredients with some seasoning and pour the mixture over the tart. Roll up the excess pastry to form a crust around the tart and brush with additional butter. Bake on the hot baking tray for 35 minutes or until golden and set. Remove and let cool and then serve with additional watercress on top.

*For more grow your own inspiration or gardening advice, visit [dobbies.com](http://dobbies.com).*





If you're looking for a showstopping lunch dish that packs a punch and will shine a light on your fresh spring herbs, this delicious smoked salmon, cream cheese and watercress filo tart is the perfect choice. Impress your family with this seasonal delight and watch it become a firm favourite.



# Love Local

WE AT CONSERVATION NEWS ARE FIRM BELIEVERS IN THE 'SHOP LOCAL' MOVEMENT AND WE THOUGHT WE WOULD USE THIS OPPORTUNITY TO TELL YOU WHY...

Over the past 15 years or so, the rise in popularity of internet shopping and American-style malls had threatened to decimate local high streets, leaving shops empty and independent traders destitute. However, it seems that in more recent years the British public have come to realise that cheap, mass-produced merchandise can't hold a candle to good old-fashioned, quality craftsmanship and the High Street is well and truly fighting back, despite the toll taken by the pandemic. The rise of what today we would call consumerism actually goes back several centuries, with 'shopping centres' such as the New Exchange in London appearing as early as the 17th century.



However, it wasn't until after the Second World War that consumerism began to take on a form more familiar to modern eyes.

An era of safety and prosperity following the hardships of war, coupled with the increased availability of mass-manufactured goods and imports, changed the British shopping scene forever. Over the next few decades this trend continued unabated, and UK shoppers were bombarded with advertisements for cheap food, clothes, household goods and more. Although the number of 'chain stores' had been on the up for many years, it can be suggested that the recession of the 1980s was responsible for driving an even larger proportion of the country into the arms of high savings and low quality.

Hot on the heels of low-cost imports, e-commerce now poses a worrying threat to our High Streets. Of the approximately 68 million people in the UK, around 60 million are regular online shoppers. However, although internet shopping is still immensely popular, something does appear to have shifted in the British psyche.

## A BRIGHTER FUTURE

Since the pandemic, with a crashing economy and invasive austerity measures, it makes sense that people are looking to save money. However, it seems that, in the same way that the last war brought people together, our shared recent experiences have garnered a sense of community. People are happier than ever to support local sellers, especially after so many went out of business during lockdown, and instead of saving money by buying mass-produced goods, people

are scaling down on quantity in favour of quality. The old adage 'you get what you pay for' has resonated with shoppers and people are happy to spend a little more in order to get quality products and, just as importantly, quality service.

Whatever your income, we all love a bargain and, whilst it's true that you can find some great deals in a supermarket, the fact is that local products from independent retailers aren't

"PEOPLE FROM ALL WALKS OF LIFE ARE NOW REALISING THAT WE NEED TO SUPPORT OUR LOCAL BUSINESS OWNERS TO SAVE OUR HIGH STREETS."

actually that much more expensive; they simply suffer when compared with the BOGOF culture perpetrated by larger stores, plus the quality is infinitely better. People from all walks of life are now realising that we need to support our local business owners to save

our high streets and they're absolutely right. In fact, this approach not only makes sense on an individual level, it's also the best way to heal our floundering economy. For every £1 spent locally, approximately 50-70 pence is circulated back into the local economy, supporting the people and services that are so vital to our way of life.

The best thing about shopping with local, independent retailers is that they are part of our community. Whether you're loading up on delicious treats at your nearest farmers' market, buying the perfect gift from a skilled artisan, or decorating your home using a long-established family company, you'll know that every penny you spend locally is supporting a real person in your area, and it's because of this direct relationship between staff and company that you get such a great level of service. Independent retailers know their business inside and out, and can offer you succinct product knowledge with a warm and welcoming attitude.

## DUCK & BLADE



Established in 2021 Duck & Blade is an exciting 'new wave' butchers situated in Faversham, offering a wide range of versatile and innovative meal ideas using only quality primal cuts of English beef, pork and lamb. Working in the trade for over 14 years, founder and Managing Director, Owyn Durrant alongside partner Lili are working to provide nothing but quality to local people.

Riggers Gallery, Standard Quay,  
Faversham ME13 7BS.

Tel: 01795 6092106 | [www.duckandblade.co.uk](http://www.duckandblade.co.uk)

## FRANKIES FARM SHOP



You will find a wonderful selection of plants, fresh produce, a stunning selection of gifts and their very popular cafe for indoor dining and takeaways; serving breakfast, brunch, lunch, afternoon tea and a delicious selection of cakes and pasteries. As well as their famous Poinsettias, they grow Geraniums for summer and Cyclamens for Autumn and a wide variety of other plants, vegetables, herbs and produce. They also offer an online ordering service for grocery orders and will deliver within a 6 mile radius. [www.frankiesfarmshop.co.uk](http://www.frankiesfarmshop.co.uk)

## MACKNADE FOOD HALL



Macknade in Faversham is a food lovers paradise. The famous food hall has been in the same family for six generations. Step inside and you will be greeted with row upon row of fresh fruit & veg and hundreds of essential and unusual groceries. The deli has over 200 cheeses and the award-winning butchery is certified Pasture for Life. Don't miss the cosy café, which showcases all of the wonderful ingredients available in their food hall, and the outdoor Food Village open during the summer months. Open daily. ME13 8XF. [www.macknade.com](http://www.macknade.com)

## NICHOLAS JAMES



Nicholas James came to Locksbottom to bring something unique that no other local shop has. Not only are we purveyors of fine foods and wines, but our *pièce de résistance* is our Master Butchers. We have our own DryAger for meats, specialise in Japanese WAGYU and USDA steaks. The finest Dingley Dell pork and sausages made using the famous Kennedy's recipe. We also offer so much more, from home deliveries, entertaining packages, eat in or takeaway delicious food and beverages from our Café. [nicholasjameslocksbottom.com](http://nicholasjameslocksbottom.com)

# HARTLEY COFFEE HOUSE & FARM SHOP

Hartley Coffee house and Farmshop is set amongst the beautiful Kent countryside just on the outskirts of the medieval town of Cranbrook.

A family run business, spanning eight generations and farming 100 acres of award-winning apples, pears and cherries, we are on a mission to champion the best of homegrown and locally sourced produce.

Our in-house butchers offer meats supplied by local farmers; the bakery showcase fresh artisan bread, bespoke cakes and pastries and a fabulous range of local and popular cheeses, cured meats and pies at available from the deli.

Late Spring will reveal a much anticipated re-vamp to our Coffee House with a new menu focusing on seasonal produce and wholesome food.



*Hartley Coffee House and Farmshop  
Hartley Road, Cranbrook TN17 3QG  
01580 715233 @hartleyfarmkent*



## HARTLEY COFFEE HOUSE AND FARM SHOP

HARTLEY COFFEE HOUSE AND FARMSHOP IS SET AMONGST THE BEAUTIFUL KENT COUNTRYSIDE JUST ON THE OUTSKIRTS OF THE MEDIEVAL TOWN OF CRANBROOK.

A FAMILY RUN BUSINESS. SPANNING 8 GENERATIONS AND FARMING 100 ACRES OF AWARD-WINNING APPLES, PEARS AND CHERRIES. WE ARE ON A MISSION TO CHAMPION THE BEST OF HOMEGROWN AND LOCALLY SOURCED PRODUCE.

BUTCHERS | DELI | BAKERY | FRESH PRODUCE | CELLAR







#### OPENING TIMES

Lunch: Tue - Sun 12 noon - 2.30pm

Evenings: Tue - Mon 6pm - 9.30pm



Birdies is one of Whitstable's oldest family run restaurants, serving brilliant locally caught fresh fish features alongside great French classics.

41 Harbour Street, Whitstable CT5 1AH Tel: 01227 265337

[www.birdiesrestaurant.co.uk](http://www.birdiesrestaurant.co.uk)



Bull Green,

Bethersden TN26 3LB

Tel: 01233 822463

Email: [Shop@BullGreenFarm.co.uk](mailto:Shop@BullGreenFarm.co.uk)

We are a family-run farm rearing Dexter cows, sheep and chickens. We believe animals should be able to roam free in the fields and enjoy fresh air and green grass.

We have a nicely stocked shop with fresh eggs daily, home grown veg, and a variety of local products such as Kentish honey, jams, and occasionally freshly baked cakes. We also have a freezer packed with locally made pies and tasty treats.





NOW OPERATING SELF  
DRIVE BOAT HIRE



## KENTISH LADY HIRE CRUISES

Scenic River Medway boat trips to Allington and Teston

Take in the sights and splendour of the Maidstone stretch of the River Medway from the comfort of the Kentish Lady River Boat. One hour trips or three hour cruises (with lunch/supper) available plus the opportunity to visit Allington castle possibly Kent's best kept secret, with its beautiful gardens, courtyards and Great Hall.

The Kentish Lady is also available for functions, including wedding receptions, birthdays or Champagne gatherings.



Tel: 01622 753740 | Email: [boattrips@kentishlady.co.uk](mailto:boattrips@kentishlady.co.uk) | [www.kentishlady.co.uk](http://www.kentishlady.co.uk)

## THE PEPPERBOX INN

*Country pub and restaurant, in the heart of Kent*



Windmill Hill, Harrietsham, Kent ME17 1LP  
[www.thepepperboxinn.co.uk](http://www.thepepperboxinn.co.uk) | Tel: 01622 842558







— LOCAL —  
Farmers' markets





# Support your local farmers' market

For more information and to find out what's in season visit [www.kfma.org.uk](http://www.kfma.org.uk).

## MARCH

**WEDNESDAY: 1st, 8th, 15th, 22nd & 29th** Rye

**THURSDAY: 2nd, 9th, 16th, 23rd & 30th** Rolvenden; Shipbourne

**FRIDAY: 3rd, 10th, 17th, 24th & 31st** Tenterden

**SATURDAY: 4th**  
Chatham; Deal; Gravesend; Groombridge; Penshurst; Sevenoaks; Tunbridge Wells; Wye

**SUNDAY: 5th**  
Bearsted; Reuthe's (Sevenoaks); Tunbridge Wells; Whitstable Castle

**TUESDAY: 7th, 14th, 21st & 28th** Capel-le-Ferne; Hildenborough

**SATURDAY: 11th**  
Bridge; Deal; Gravesend; Hythe; Sevenoaks; Tunbridge Wells; Wadhurst; Westerham Valley; Whitstable

**SUNDAY: 12th**  
Herne Bay; Lenham; Reuthe's (Sevenoaks); Tonbridge; Tunbridge Wells; Staplehurst

**SATURDAY: 18th**  
Deal; Gravesend; Sevenoaks; Tunbridge Wells; Wadhurst; Westerham Valley; Wye

**SUNDAY: 19th**  
Aylesford; Reuthe's (Sevenoaks); Rochester; Staplehurst; Tunbridge Wells; Watlingtonbury

**SATURDAY: 25th**  
Bridge; Deal; Gravesend; Hythe; Knockholt; Sevenoaks; Tunbridge Wells; Westerham Valley; Whitstable

**SUNDAY: 26th**  
Cliftonville; Reuthe's (Sevenoaks); Tunbridge Wells

## APRIL

**SATURDAY: 1st**  
Chatham; Deal; Gravesend; Groombridge; Kent Showground; Penshurst; Sevenoaks; Tunbridge Wells; Westerham Valley; Wye

**SUNDAY: 2nd**  
Bearsted; Reuthe's (Sevenoaks); Tunbridge Wells; Whitstable Castle

**TUESDAY 4th, 11th, 18th & 25th** Capel-le-Ferne; Hildenborough

**WEDNESDAY: 5th, 12th, 19th & 26th** Rye

**THURSDAY: 6th, 13th, 20th & 27th** Rolvenden; Shipbourne

**FRIDAY: 7th, 14th, 21st & 28th** Tenterden

**SATURDAY: 8th** Bridge; Deal; Gravesend; Hythe; Sevenoaks; Tunbridge Wells; Westerham Valley; Whitstable; Dover

**SUNDAY: 9th** Herne Bay; Lenham; Reuthe's (Sevenoaks); Tonbridge; Tunbridge Wells

**SATURDAY: 15th** Deal; Gravesend; Sevenoaks; Tunbridge Wells; Westerham Valley; Wye

**SUNDAY: 16th**  
Aylesford; Reuthe's (Sevenoaks); Rochester; Staplehurst; Tunbridge Wells; Watlingtonbury

**SATURDAY: 22nd** Bridge; Deal; Gravesend; Hythe; Knockholt; Sevenoaks; Tunbridge Wells; Westerham Valley; Whitstable

**SUNDAY: 23rd** Reuthe's (Sevenoaks); Tunbridge Wells

**SATURDAY: 29th**  
Deal; Gravesend; Tunbridge Wells; Westerham Valley

**SUNDAY: 30th**  
Cliftonville; Reuthe's (Sevenoaks); Tunbridge Wells

## MAY

**TUESDAY: 2nd, 9th, 16th, 23rd & 30th** Capel-le-Ferne; Hildenborough

**WEDNESDAY: 3rd, 10th, 17th, 24th & 31st** Rye

**THURSDAY: 4th, 11th, 18th, 25th** Rolvenden; Shipbourne

**FRIDAY: 5th** Tenterden

**SATURDAY: 6th** Chatham; Deal; Gravesend; Groombridge; Penshurst; Sevenoaks; Tunbridge Wells; Westerham Valley; Wye

**SUNDAY: 7th**  
Bearsted; Reuthe's (Sevenoaks); Tunbridge Wells; Whitstable Castle

**FRIDAY: 12th, 19th & 26th** Tenterden

**SATURDAY: 13th**  
Bridge; Deal; Gravesend; Hythe; Sevenoaks; Tunbridge Wells; Westerham Valley; Whitstable

**SUNDAY: 14th**  
Herne Bay; Lenham; Reuthe's (Sevenoaks); Tonbridge; Tunbridge Wells

**SATURDAY: 20th**  
Deal; Dover; Gravesend; Sevenoaks; Tunbridge Wells; Wadhurst; Westerham Valley; Wye

**SUNDAY: 21st**  
Aylesford; Reuthe's (Sevenoaks); Staplehurst; Tonbridge Food & Drink Festival; Tunbridge Wells; Westerham Valley; Watlingtonbury; Whitstable

**SATURDAY: 27th**  
Bridge; Deal; Gravesend; Hythe; Knockholt; Tunbridge Wells; Whitstable

**SUNDAY: 28th**  
Cliftonville; Reuthe's (Sevenoaks); Tonbridge Food & Drink Festival; Tunbridge Wells



## GRAPE VARIETIES

Many of the international grape varieties originated in France. Italy, Spain, Portugal and Greece have many indigenous varieties that are not seen outside their country and so help to distinguish their wine in this way. The advantage is that these wines do make a point of difference when making a choice about which wine to buy. This is where New World wines have made such huge inroads into wine consumption in the UK. The Australians started the trend to label the wine by the grape variety and all the other New World countries followed suit which proved extremely popular. This is still the trend today where most consumers choose their wine by grape variety and so over the last decade or so Old World producers make a number of wines where the grape is on the label, which is outside their strict rules, but in order to compete on price and style.



# COMPARING OLD AND NEW WORLD WINES

WE OFTEN HEAR THE TERMS 'OLD WORLD AND 'NEW WORLD' WHEN REFERRING TO WINE – BUT WHAT DOES IT ACTUALLY MEAN?

**W**ell – the Old World refers to where modern winemaking originated – in Europe and the New World is outside Europe, e.g. America, South America, Africa, Australia, New Zealand etc. The main differences found are in the style of wine produced which is a result of climate, winemaking techniques and certain traditions which influence the taste and flavour characteristics of the wine.

## STYLE OF WINE

Wine from the Old World often reflects the terroir or the place where the vines have been planted and tends to emphasise the surrounding region and the historical/ cultural context of the area. In most European countries, there are strict rules governing which grape variety can be planted in each region along with maximum yields and alcohol levels allowed. This is very important to Old World producers so that their style of wine can be distinguished from other wines with the same grape variety on the basis of 'terroir' as well as winemaking techniques. Old world wine can sometimes, although not always, appear less fruity than its new world counterpart because the sense of

place is often prioritised over making the wine more fruity.

On the other hand, New world wine places the grape itself at the heart of the winemaking – often emphasising the fruitiness in the grape. Since the UK starting importing high volumes of wine from the New world in the 1980s – this style of wine has proved to be very popular – sometimes at the expense of wines from the Old world. New World wines are not governed by the same strict rules that exist in Europe and plant their grapes in regions which are best suited to that particular variety. For example, Riesling grows best in a cooler climate so the best examples in Australia come from the Clare valley, adjacent to the Barossa Valley, but at altitude. Pinot Noir also prefers a cooler climate and some of the best examples come from Tasmania and New Zealand.

However, about twenty years ago, Old world producers were beginning to be left behind by the popularity of New World wines and therefore today are producing more wines outside their respective tight rule boundaries in order to compete. For example, some wines have the grape variety on the label to make them more accessible to the consumer as well



as making them fruitier and easier drinking. Likewise, a number of New world countries such as Chile are creating smaller, premium areas in order to produce wines that reflect the 'terroir' and give a sense of 'place' as such become more distinctive and unique.

## BODY OF THE WINE

Many New World countries have a warm climate for much of the year and in wine terms – more warmth means more body in the wine and a higher alcohol level. But, it is not as cut and dried as that because New Zealand has a cool maritime climate as does Tasmania and these regions are not suitable to ripen grapes such as Cabernet Sauvignon or Grenache. On the other hand, some regions of France, Spain and Italy can become very warm in summer producing equally full bodied wine and high alcohol levels. However, what can be said is

that in countries such as Australia, warm or even hot weather is consistent or pretty much guaranteed whereas in Europe this is not always the case. A cool year or a bad harvest can seriously spoil the grapes for that year and some may not ripen at all. Too much rain might be a problem in Europe which causes disease to the grapes, but in the New world – the opposite is true – too little rain can be a problem so many vines have to be irrigated to combat this problem which can be expensive.

### *Here are three comparisons between Old World and New World wines*

## CHARDONNAY

Chardonnay is an international grape variety grown all over the world and produces a range of different styles from fresh and crisp as in Chablis to full bodied with tropical fruit such

as in Australia. France is considered the home of Chardonnay and some of the best (and most expensive) are produced in the Cote d'Or in Burgundy. These wines tend to be citrusy, with aromas of white peach, honeysuckle, hazelnuts, anise with a delicate creamy texture and a medium body. Many of the best age for decades and develop a great depth of complexity. Tasmania is also known throughout the world as producing high quality Chardonnay; its cool maritime climate is ideal for letting the grapes ripen slowly so they can develop their full flavour profile. These wines use very similar techniques to those in Burgundy



## SYRAH/SHIRAZ

All the top Syrahs in France come from the Northern Rhone with Hermitage and Cote Rotie considered among the best in the world. All the Northern Rhone wines have slightly different rules as to whether small amounts of white grapes such as Viognier, Marsanne or Roussanne are allowed in the blend – most are 100% Syrah.

Crozes Hermitage are the most affordable wines in the region, but It seldom has the rich, soft black fruit of Australian Shiraz, nor the complexity and elegance of the more expensive wines of the Northern Rhône. It is medium-bodied, not too headily alcoholic and often seems to combine the scent of black cherries with white pepper, backed by juicy acidity and relatively firm, sometimes slightly green tannins. Aussie Shiraz is full bodied with plenty of ripe red and black fruit, a little black pepper with savoury notes and a rich texture.



such as fermenting and maturing in old oak and battonage (stirring the lees) which produces the rich, creamy texture. Perhaps the main difference is the price; wines from the Cote d'Or can sell for hundreds of pounds and age for decades whilst the wines from Tasmania are not cheap, but do not reach nearly the same price.

## CABERNET SAUVIGNON

The Haut -Medoc area on the left bank of the Medoc in Bordeaux produces some of the most expensive Cabernet Sauvignon in the world. These wines are complex with high tannins with notes of liquorice, blackberry and spice. Many of the top wines are meant for long term cellaring where the wine keeps evolving, developing more complexity and depth. These wines are always blends with Merlot and Petit Verdot which helps to soften the tannins and

are known all over the world as the 'Bordeaux blend'. In countries such as Australia, South Africa and California in the USA, Cabernet Sauvignon can be made as a varietal (e.g 100% Cabernet). This is because the climate is warm enough to fully ripen the berries which results in deep, jammy blackcurrant and plum fruit, soft, ripe tannins, a full body, high alcohol often with notes of tobacco leaf.

In this short article, I have summarised the main differences between Old world and New world wine and of course, there are exceptions and variation I the wine profiles due to the reasons mentioned above. Wine can be a complex subject, but just knowing the style of wine you enjoy and where you can find it can really simplify the process!

**RowenaHawtin (DipWSET)**

[www.discoverthevine.co.uk](http://www.discoverthevine.co.uk)





# LAND + SEA TANKERTON

LAND + SEA IS A FOODIE'S HEAVEN, OFFERING GREAT FOOD, USING QUALITY LOCAL INGREDIENTS.

Set on the north Kent coast just minutes away from the main town of Whitstable and seven miles from the beautiful city of Canterbury, Tankerton is Kent's best kept secret to explore and enjoy. Tankerton Road is a vibrant retail and hospitality destination just a few minutes' walk away from the main seafront area with an array of independent shops, restaurants,







cafés and bars. It's here you will find Land + Sea; a foodie's heaven, offering great food, using quality local ingredients.

From brunch, to lunch, to dinner, the restaurant is open for you to try some of the freshest made food whatever the occasion. There is also the choice of the deli counter, so you can enjoy some of these delights from the comfort of your own home. The restaurant is currently open three evenings a week, but from Wednesday 29th March they will be open for four evening. Land + Sea offer some unique dishes for you to try in a sharing style or your classical multi-course dinner. We decided to give it a try on a busy Saturday night and were not disappointed.

On arrival my dining partner and I were shown to our table by our waitress, Jessica who remained attentive, friendly and informative throughout the evening.

Head Chef Ben Stead proved to be chatty and knowledgeable, keen to share his enthusiasm for the fine details of the food and drink on offer. This is someone who clearly cares deeply about what he's doing, and wants to do it well.



The arrival of our shared starter, Baked Scallops with Nduja butter and lime elicited murmurs of approval. The presentation – as proved to be the case with everything we ordered – was immaculate. Stylish crockery and precision plating made for eminently Instagrammable photos.

On to the first of the mains, Chargrilled Local Lamb with Harissa, Carrot and Graceburn. The





lamb was a quality piece of meat, intelligently cooked – pleasantly caramelised on the outside and pink, but overly so, on the inside – a tender, flavoursome delight.

The second main was the Megrim sole (a flatfish that's plentiful around the UK with very pale white, sweet and flavourful flesh) served with mussels, caviar and almonds. I chose an accompaniment of crushed fried potatoes and anchovies. The whole dish was absolutely bang on. The fish was meltingly soft and the accompanying sauce was perfect. The whole lot disappeared, so a definite thumbs up there.

The desserts were also absolutely fabulous. The fried bread and butter pudding which incorporated leftover pastries was genius. I have to commend the whole zero waste ethos that Ben is trying to achieve with this dish. The second dessert was a Dark Chocolate Mousse with Rhubarb, Hazelnut and Brownie. Anything with chocolate in is always a winner for me, and this was just sublime. The accompanying rhubarb was tart enough to cut through the

sweetness of the chocolate and made for a delightful combination.

It's true to say that plenty of restaurants pay lip service to the notion of a warm welcome, but this is a place where everyone seems genuinely relaxed and friendly.

There was a delicacy and finesse about all the dishes that suggested that Chef Ben possesses a winning combination of culinary cleverness and unyielding perfectionism.

Handsome good looks and terrific taste combos – job done! If you're planning an evening at this little gem of an eatery (particularly on a Saturday) you would be advised to book as it's getting more and more popular by the day.

#### OPENING HOURS

Brunch: Mon - Sun: 9:30am - 11:30am

Restaurant: Mon - Sat: 12pm - 3pm

Wed - Sat: 6pm - 9pm

Sun: 12pm - 4pm

landandseatankerton@outlook.com



The Curious, for every celebration



THE CURIOUS

Tel: 01622 299359 [www.thecuriouseatery.co.uk](http://www.thecuriouseatery.co.uk)

Curious Eatery, Albion Inn,  
1 Church Street,  
Boughton Monchelsea,  
Maidstone ME17 4HW





HARVEY MARIA®  
FABULOUS FLOORS

DEWITT RESIDENTIAL FLOORING LIMITED

PLEASE CONTACT US TO DISCUSS YOUR FLOORING REQUIREMENTS: 01622 858940

9 HIGH STREET, LENHAM, KENT. ME17 2QD | [WWW.DEWITTFLOORS.CO.UK](http://WWW.DEWITTFLOORS.CO.UK)