

CONSERVATION NEWS

Kent

Autumn 2023 • Complimentary

The versatility of
KITCHEN ISLANDS

AUTUMN
decorating trends



PERIOD HOMES • RENOVATION • INTERIORS • GARDENS • FOOD

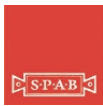
Ashford & Cranbrook RoofingTM

— *Experts in heritage roofing* —



Proud to supply authentic Kent Peg tiles through our partner Spicer Tiles

www.cranbrookroofing.co.uk



Tel: 01580 242925

WELCOME

AUTUMN 2023



W elcome to our autumn edition. I don't know about you, but Autumn is my favourite season. I know it's sad to say goodbye to the summer sunshine for another year, but here in Kent we get to watch as the myriad trees turn to gold, and the fruits of our many local orchards come into season.

It's a time for wonderful walks through crunching leaves, for warm drinks in the cold garden and for settling in and preparing ourselves for winter.

For many people, autumn is the ideal time for a bit of home improvement, now that the weather is still dry enough for decorating.

This quarter we've got articles on all different aspects of home improvement, from cosy insulation to finishing touches for your walls. We've got a piece on creating your perfect kitchen island, and advice on all sorts from some of Kent's best businesses.

We've also got tips on putting the garden to bed and a run down on all things Kentish! So don't give up on the outdoors just yet: wrap yourself in a blanket, grab a cuppa and snuggle on the patio with Conservation News.

Dawn



CONSERVATION NEWS
conservationnews.co.uk

Publisher
Conservation News

Contributors
Susan Hubbard
Liz Norton
Louise Tomlin
Rowena Hawtin

Cover:
homesense.com

Design
Dandelion Design

Editor/Sales Manager
Dawn Long
Tel: 07725 732535
dawn@conservationnews.co.uk
© Conservation News 2023



If you receive your copy of Conservation News by Royal Mail and wish to opt out of our mailing, please send an email to dawn@conservationnews.co.uk

All rights reserved.
Reproduction of any part of this magazine is not permitted without written permission of the publisher.
The publisher accepts no responsibility of any loss or damage in respect of any product or service that may be advertised.



Copperfields

OF WHITSTABLE

Cookshop & Homewares Since 1956

Inspiration for your kitchen and home



Cookware • Homeware • Gifts • Bakeware • Furniture • Electrical • Cards

shop@copperfieldsofwhitstable.co.uk • www.copperfieldsofwhitstable.co.uk

93 - 95 High Street • Whitstable • Kent • CT5 1AY • Tel: 01227 273519

OPEN 7 DAYS A WEEK

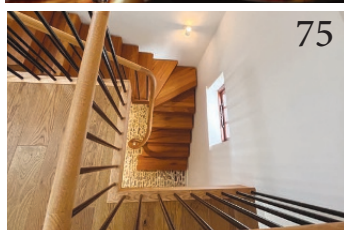


AUTUMN 2023

Contents



- 10 **Autumn gardening**
What to do in the garden now
- 27 **Stardust memories**
A must for lovers of movie memorabilia
- 32 **A fabulous finish**
Choosing the right paint finish for your home
- 41 **Island life**
The versatility of kitchen islands
- 53 **Walls and floors**
The foundations of our interiors
- 62 **Red hot**
Get the look
- 69 **Insulating your period home**
Tips and advice
- 75 **First class carriage house restoration**
A joint renovation project
- 82 **Your table awaits**
A spectacular 'table for the nation'
- 98 **Garden cookbook**
Two seasonal recipes
- 106 **Farmers' markets**
Shop local this autumn
- 110 **The perfect match**
Food and wine pairings



Enhance your outdoor living space



Verandas • Glass Rooms • Awnings • Pergolas
Carports • Solar Garage Doors & Shutters



SBI Ltd 0800 0742 721 sbiproducts.co.uk

WAREHAMS

Antique Garden Ornament • Gustavian Furniture

68 Oxford Street - Whitstable CT5 1DG
Mobile : 07831 210139
www.warehams.com



H&G CHIMNEY SERVICES

- Chimney sweeping service • Long established
- ICS registered • All types of flue • All pots-cowls supplied & fitted • Complete re-builds
- Re-pointing • Guttering, roof & valley repairs

01622 739439 or 07860 318166
info@chimneysweepkent.co.uk

BJ CESSPOOL SERVICES LTD



Tel 07796 282864 or 01233 624017
www.bjcesspool.co.uk

If you want someone who is reliable, careful and efficient to empty your cesspool, septic tank or treatment plant please call Barry or Fiona Spicer.

- Emergency blockages
- Septic tank clearance
- Cesspool maintenance
- Treatment plant maintenance

We can help you with your home, rental properties, caravan parks, hotels and in fact any property that is not on main drains.

A jetting service can also be provided.

Relax in style with our beautiful heartwood teak furniture



Visit our showroom to experience the real comfort of our luxurious teak furniture for yourself. Our beautiful chairs, tables and benches are perfect for any garden or patio setting and with minimal maintenance, you really can sit back and enjoy your garden in style. Our designs are made from A-Grade sustainable heartwood plantation teak and use stronger, thicker wood that will withstand the British weather for many years to come.

Showroom visits are by appointment only.
Call Steve on 07973 791620 or email steve@kentgardenfurniture.co.uk to book.

Kent Garden Furniture

01843 594454 or 07973 791620

www.kentgardenfurniture.co.uk

1 Nicholas Drive, Cliffsend, Ramsgate, Kent CT12 5JS



EVERGREEN LANDSCAPING

All aspects of landscaping work undertaken:

- Decking, patios, fencing
- Driveways, block paving, brick and stone work
- Ponds, planting and more.

All finished to a high standard at competitive prices.

Phone Lee 07799103112 / 01227 264482

For a free quotation or visit www.evergreengardenskent.co.uk



5-7 days
a week



Old English Tools



Bench planes, chisels, felling axes, bill hooks, froes, draw
shaves, side axes, early garden tools, blacksmith tools,
pine boxes. Cast iron log burners and fire grates.

Tools old and new bought for cash. Workshops cleared.

Essential business with restrictions.

Faversham Standard Quay, ME13 7BS

BLACKSMITHS' ANVILS WANTED

Call Phil on 07796 343722 / 07850 292523

www.countryclobberltd.co.uk



Find us on:
facebook
OLD ENGLISH TOOLS

PRESTON GARDENS & Coppers

Garden Centre Restaurant Events

COPPERS

- Serving breakfast and lunch
- Fully licensed with extensive wine list
- Afternoon tea (pre booking is essential)
- Dine in with your furry friends at our Sky Room
- Quiz Night 1st Thursday of each month – 13.50 with two course dinner
- Afternoon Cake Club
Mon-Fri 3pm to 5pm
Large tea/coffee & slice of cake for just £5
No booking required
- We cater for private events. For more information contact us or check:
www.prestongardensandcoppers.co.uk



Come and join us for our Christmas Events

- Friday 1st December - Tina Turner Tribute Act with 4 course Christmas menu £49.99
- Friday 8th December - Christmas Dragaganza! Ticket entry only £20. Festive light bites menu available.

The Street, Preston,
nr Wingham,
Canterbury CT3 1ED
Tel: 01227 728580



PRESTON GARDENS

- Great selection of trees for the autumn planting season
- Autumn bedding
- Large selection of pots
- Kadai firebowl specialists
- Cards and gifts
- Christmas trees arriving last week in November
- Christmas lights and decorations



OPENING HOURS

Sunday - Thursday 10am-4pm

Friday & Saturday 9am - 4pm





Eye-catching Iris

Iris reticulata is an early flowering iris, bearing pale blue to deep violet blooms with central yellow splashes down the middle of each petal, from late winter to early spring. It's perfect for growing at the front of a sunny border, and can also be grown in pots. For best results grow in well-drained soil in full sun. Plant the rhizomes 5-10cm apart at twice their own depth. To propagate, divide bulbs from mid-summer to early autumn.



READY TO PICK

Squash and pumpkins are colouring up beautifully now. You'll know they're ready to harvest when you knock them and they sound hollow – also the plants start dying back naturally. Cut fruits with about 10cm of stalk intact and leave in a greenhouse or sunny window for two weeks to harden the skins.

Garden notes

Autumn is a special time of year for many gardeners. Allotments are brimming with fruit and veg and the soil in your garden will still be warm enough to plant spring bulbs. It's a beautiful season, with the trees changing colour. Sometimes it may seem pointless raking, when the wind blows even more leaves onto the lawn, but just think of all the lovely leafmould you can make! It's also time to start preparing for early frosts.



Ready, steady, grow

With food prices constantly rising, growing your own fresh veg is an undeniably appealing option. For bumper crops in the coming year, right now is the time to start and here's what to plant.

Broad beans Sow your beans in a sunny spot, 5cm deep in double rows. Your beans will germinate in a week or two and will happily survive an average winter.

Spring cabbage Ideally sown in August, it's worth a punt and sowing a row or two in September.

Winter onions You can plant hardy varieties up until the end of October. Plant in a sunny spot and keep your onion patch weed free.



Dahlia tubers

Don't forget to lift gladioli and take up dahlias; store bulbs and tubers in a frost-free location where they won't be attacked by mice and other unwanted visitors. Dahlia tubers are costly to buy, so it's worth taking the time to protect them. The first severe frost will blacken the foliage, and that is your cue to cut the tops to about 15cm above soil level and carefully dig up the tubers. Rinse all the soil off the tubers, then bring them inside and stand them upside down for a few weeks to drain any remaining water from the hollow stems. When dry, lay the tubers in deep trays or boxes and cover them with a layer of dry compost.

Create a cut flower patch

Creating your own cut flower patch couldn't be simpler. Prepare the area by removing any weeds and add a mulch of garden compost to the soil surface. You can start by growing hardy annuals ready for spring next year. If you didn't sow biennials such as sweet williams and wallflowers in the summer, you can buy young plants now in garden centres. Over the coming months, in October and November, plant extra spring-flowering bulbs such as daffodils, tulips and alliums. Also plant primulas.



What to do in the garden now

- Repair worn out lawn patches.
- Remove dead plant material from ponds to keep the water fresh.
- Trim hedges to get them ready for next spring's growth.
- Plant perennials now so they can establish their roots before winter.
- Remove diseased leaves from roses.
- Keep watering autumn pots.
- Cut back lavender.
- Deadhead dahlias.
- Tidy up evergreen ferns by removing old fronds to improve the winter display.

It's a wrap

To store apples over winter, carefully inspect them and set aside any that are bruised or damaged. Wrap each sound apple in newspaper and arrange in a box or basket. Store in a frost-free garage, shed or basement. Check regularly for spoilage, removing any rotten apples before they spoil the rest.



HAPPY PLACE, RESTORED

If you love your lawn,
you'll love GreenThumb.
Our year-round treatments
will give your grass the
TLC it deserves.



GreenThumb
LAWN TREATMENT SERVICE



Scan here

Discover more at greenthumb.co.uk

01227 652351

canterbury@greenthumb.co.uk

ALAN
HOPKINS

Tel: 01227 731302 or 07961 985538
www.alanhopkinstreesurgeon.co.uk

Underdown Nursery, Mystole Lane,
Chartham CT4 7BX



ALL ASPECTS OF TREWORK

NPTC CERTIFIED

- Felling
- Thinning
- Pollarding
- Deadwood
- Site & garden clearance
- Stump grinding
- Wood chipping
- Call today for a competitive quote



Landscaping specialists

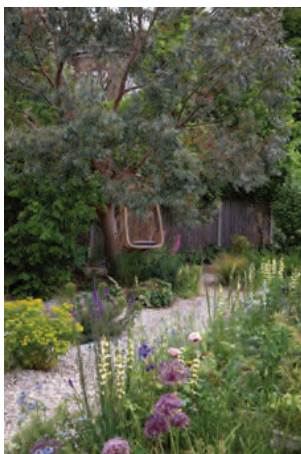
- Block paving
- Driveways
- Decking
- Fencing
- Patios
- Turfing
- Garden clearance
- Building & maintenance work



www.drivewayexperts.co.uk



Tel: 07770 964939



THE GARDEN
CREATIVE

BESPOKE GARDEN DESIGN

07725055701

sarah@thegardencreative.com

www.thegardencreative.com

Constructed and resurfaced
in Kent, Sussex and Surrey



Please call
Martin for free
advice and
quotations

Tel: 01424
892265
07831 643835

www.martingurr.co.uk





**InThe
Country**

COUNTRY CLOTHING AND ACCESSORIES



**Come visit us in store for a warm, friendly welcome,
stocking all your needs for outdoor pursuits**

Our store is open 5 days a week, visit us at

IN THE COUNTRY

ASHFORD ROAD, BADLESMERE KENT ME13 0NX

Wednesday - Sunday 10am - 4pm

01233 742700

inthecountrykent.co.uk www.inthecountrykent.co.uk



Newnham Court Shopping Village

Junction 7, M20, Maidstone, Kent

Newnham Court Shopping Village first opened in 1983 and over the last 40 years has enjoyed great success thanks to our loyal customers who visit regularly to browse, shop and socialise with family and friends. The village thrives on being innovative and forward thinking, meeting the changing needs of customers whilst retaining the trust and quality it has become renowned for.

Notcutts Garden Centre has been at the heart of the Village since the beginning and continues to appeal all year round with tools, plants, flowers and bulbs. Garden furniture and BBQ's too. A winter wonderland awaits, full of Christmas magic with displays of lights, trees and decorations. Gifts for family and friends. If Christmas gets you thinking about family gatherings, roast dinners and entertaining then **The Butcher of Brogdale** has all you need to make every occasion special with their quality meats and deli.

The Village is not short of long thriving businesses, including **Pennies Children's Nursery** and Kids Clubs where childcare is the very best in learning and fun. **Pure Hairdressing** and **Pure Beauty** offering the best in hair care, beauty treatments and sunbeds. **Cotswold Outdoor** and **Runners Need** where you'll find everything you need for outdoor adventures, top quality branded clothing and footwear, there's running shoes all backed up with expert knowledge and advice. Pets

and pet supplies have also been a consistent, **Maidenhead Aquatics** run by fishkeepers for fish, pumps and supplies, come and feed the fish. Notcutts for your pet supplies for dogs, cats, small animals and Garden Wildlife, bird tables, feeders and food.

When it comes to home improvements local trusted suppliers are of the utmost importance and **Fineline Windows Doors and Conservatories** have been installing high quality products for decades and remain one of the longest serving businesses. At Newnham Court Shopping Village. **Johnsons** are also continuously evolving their offering and today have an impressive display of garden buildings, summer houses and hot tubs.

The Coffee Corner restaurant has been at the heart of the village since the beginning. It has seen renovations and expansions and today remains a thriving and popular choice along with **Bricks Coffee House** in The Courtyard. As the 40th anniversary celebrations continue, the Village looks forward to welcoming visitors old and new to enjoy the stress-free out of town shopping experience, where you are spoilt for choice. Wheelchair and pushchair-friendly too, we look forward to seeing you soon.

FREE PARKING • OPEN EVERY DAY

Follow us on social media and visit our website for the latest news and offers.

newnhamcourt.co.uk





STORE DIRECTORY

AHM Installations	01622 738204
Bonmarche	01622 824069
Bricks Coffee House	01622 631022
Charterwood Mobility	01622 631511
Coffee Corner Restaurant	01622 736744
Cotswold Outdoor/	01622 738381
Runners Need	
Edinburgh Woollen Mill	01622 738371
FineLine Windows,	
Doors & Conservatories	01622 631613
Gymfinity & Nursery	01622 291410
Johnsons Garden Buildings	01622 730777
Klass Collection	01622 730815

Maidenhead Aquatics	01622 739210
Notcutts Garden Centre	01622 739944
Notcutts Home & Gift Shop	01622 739944
Pavers	01622 735922
Pennies Day Nursery	01622 737733
Pure Beauty Essentials	01622 738774
Pure Hairdressing	01622 632642
Shophmobility	01622 631511
Simmonds Schoolwear	
& Sportswear	01892 837202
Sussex Beds	01622 630576
Timberjacks Fencing	01622 730777
The Butcher of Brogdale	
Trend Transformations	01622 469541



**TRADE &
RETAIL
TIMBER
MERCHANT**

EAST KENT TIMBER

Timber Merchants

QUALITY SOFTWOOD

HUGE RANGE OF HARDWOODS

DECKING & DECKING KITS

SHEET MATERIALS

MACHINED TO YOUR DESIGN

BEAUTIFUL HARDWOOD FLOORING

FREE LOCAL DELIVERY

01227 738838

www.eastkenttimber.co.uk

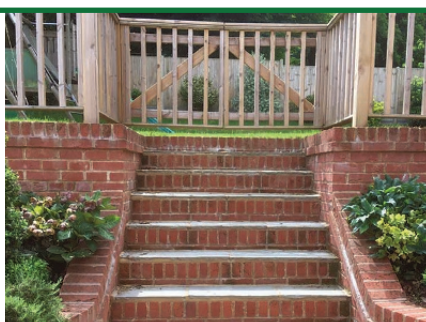


Landscape Designer & Building Contractor

We offer the following services:

COMPLETE GARDEN DESIGN: Patios and decking, gazebos and water features, turfing, fencing, electric gates and astroturf.

GROUNDWORK: All demolition work, footings, oversights, extensions, drop kerbs, drainage and civil engineering.



Able Landscapes & Building Contractors

CONTACT US

T: 01227 750191

Mobile: 07759 546838

E: ablelandscapes@btinternet.com

www.ablelandscapes.com

**ABLE
LANDSCAPES**





G&D GARDENING & PAINTING SERVICES



- Garden clearance
- Garden maintenance
- Grass cutting/pruning
- Internal/external painting

FOR A FREE QUOTE
Tel: 07938 756617



Local artist: Cathy McClymont

Cathy lives in Maidstone, Kent where she has lived for the last twenty years bringing up her four children. She loves to paint with oils acrylic and pastel.

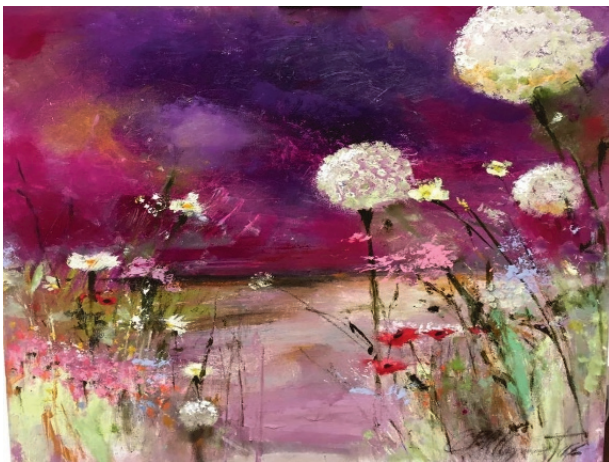
"I like the texture of mixed media combining all mediums together, breaking the rules a bit of more traditional artists. Although the subject of landscapes and floral designs are perhaps traditional. I also love to paint the

local beautiful houses and oasts we have here in Kent. Cathy has been a professional artist for ten years now but was a qualified graphic designer working in London's Fitch and Co back in the day on brands like Topshop and Harrod. "After having my children and one being disabled I had to change my profession, and work around being a full-time carer for my daughter Kitty; so painting was the perfect escape and passion. I started selling my work along with antique furniture at The Wealden Times fairs. The paintings were so popular

I haven't looked back since. I am very busy all year round painting, exhibiting and selling my art.

Anthony at the Saward Gallery has been with me from the start. He is so professional and enthusiastic about what he does and does it with speed and accuracy.

Anthony says "Most of Cathy's paintings are framed and it's the combination of frame and painting that completes the picture. Cathy will take the frame first and then paints within the frame and paints with her imagination what suits the frame. Then applying paint to the frame layering to get the desired effect. The paintings are extremely vibrant in colour and subject. Her customers



keep coming back as her paintings are often a source of inspiration for their own home interiors.

If you are interested in commissioning a work of art please contact Cathy direct on 07763524069 or pop into Saward Gallery.

the Anthony Saward Gallery

Original artwork
available by local Kent
artist Cathy McClymont



- Bespoke framing ● Wide choice of Mouldings & Swept Frames
- Over 30 years experience ● Friendly reliable service

4 Medway Street, Maidstone ME14 1JS 01622 676926
www.sawardgallery.co.uk



LIFETIME DRIVEWAYS

**AWARD WINNING BLOCK PAVING
AND RESIN DRIVEWAYS**

Drives, Patios and Paths

0% DEPOSIT - PAYMENT ON COMPLETION

**BLOCK PAVING - CONCRETE - TARMAC
SHINGLE - PATIOS - SLABBING
CRAZY PAVING - FENCING
NATURAL STONE - BRICKWORK
TURF & TOPSOIL
ARTIFICIAL GRASS - RESIN BOUND**

01227 362082 Mob: 07731 316879

www.lifetimedriveways.co.uk



Marshalls

Creating Better Landscapes



direct line



Oak firewood based in Kent

We have been producing oak firewood for over 6 decades. We have a comprehensive range of options for all domestic and commercial heating needs. We supply logs, offcuts and kindling for a verity of applications including open fires, wood burners, boilers and inglenook fireplaces.



As our range all comes as standard in kiln-dried, you can be sure that you are getting the most out of the wood you're burning:

- 4m2 & 2m2 loads
- Cleaner burn
- Better for the environment
- Longer/hotter burn time

Call us on 01233 732179 send us a message or feel free to email us or visit www.orlestoncoak.co.uk



ORLESTONE OAK

KENT • ENGLAND

Save on your home insurance



Insurance for all types of homes including:

- High Value Homes
- Property Undergoing Renovations
- Non-Standard Construction
- Listed Buildings

gsi-insurance.com

GSI Insurance Services (Southern) Ltd
118 John Wilson Business Park
Whitstable
Kent
CT5 3QY

Tel: 01227 772 775

Your local broker has it covered

Ed Parry

Plumbing & Heating

Installation, Servicing & Repair

- Boilers
- Cookers
- Central Heating
- Bathrooms
- Power Flushing
- Showers



Landlord gas safety certificates

01227 266236 • 07976 925224

ed.parry@me.com

www.edparryplumbingandheating.co.uk

SOUTHGATE ELECTRICAL CO. LTD

The Best Electrical Services

*Offering a full range of electrical services
from design to installation*

- External Electrics
- New Builds
- Access and Security
- Space Heating
- Electric Showers
- Fire Alarms
- Landlord Certificates



T: 01227 712790 / 07889 895394

www.electricians-canterbury.com



THE WINDOW MAN

- Glass supplied and fitted
- Greenhouse glass supplied and fitted
- Sash cords and mirrors supplied and fitted
 - New handles supplied and fitted
- Double glazed units repaired and fitted
- Lead lights and stained glass repaired

Established 50 years

Call: 07961 442810 johnnytheglass@gmail.com



SuperMaids Domestic
Cleaning Services Ltd



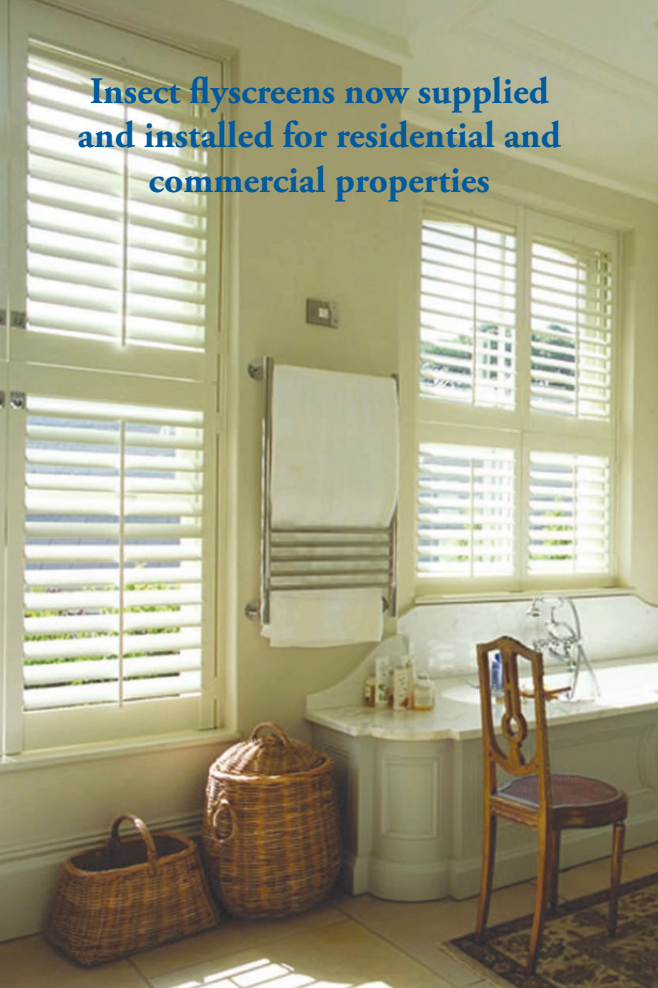
CELEBRATING OUR 35TH ANNIVERSARY 1988 - 2023

Regular or One-off Cleaning
Homes & Holiday Lets • End of Tenancy
• Moving Cleans • Spring Cleans
Professional, Friendly, Reliable Service

CALL US NOW FOR A FREE QUOTATION

Tel: 01227 277033 | www.supermaids.co.uk | info@supermaids.co.uk

**Insect flyscreens now supplied
and installed for residential and
commercial properties**



CGS BLINDS & SHUTTERS LTD

NEW MATERIALS |

FINANCE OPTIONS AVAILABLE

• Huge choice • FREE quotations

Tel: 01227 278643

146 Tankerton Road, Whitstable CT5 2AW

www.cgsblinds.co.uk



Find us on Facebook

Proud members of

Checkatrade.com

BBSA
BRITISH BLIND & SHUTTER ASSOCIATION

The
Canterbury
Auction
Galleries

FINE ART
AUCTIONEERS
SINCE 1911



thecanterburyauctiongalleries

Fans of Star Wars, Doctor Who, and Hammer House of Horror

SAVE THE DATE

PETER CUSHING

PERSONAL DOCUMENTS
AND MOVIE EPHEMERA

EXCLUSIVELY FOR AUCTION

SUNDAY 1st OCTOBER 2023

Register to bid at
www.thecanterburyauctiongalleries.com

Collectible bespoke catalogue available for pre-order

Telephone 01227 763337 Email general@tcag.co.uk Visit thecanterburyauctiongalleries.com

Stardust memories

Collectors of movie memorabilia are queuing up for an auction of items from a Star Wars and horror film legend.



Collecting TV and film memorabilia is a field that's been growing in popularity – and returns! – in recent years.

Not only is it fun to have a little something that reminds you of a loved film, or an item with links to a favourite celebrity, the items are generally attractive in their own right - props, posters, stills and toys, all sprinkled with a bit of stardust.

And the value is not just sentimental. A recent study from Sotheby's revealed that auction prices fetched by props from old films had tripled in value over ten years.

As we all age, items from our childhood become 'vintage', creating demand driven by nostalgia. Add to that the fact that CGI has reduced the number of physical props in a film and the laws of supply and demand kick in. There's a record number of formerly-obscure collectors groups now easily accessible online, boosting prices too.

But where does one start?

Memorabilia from popular TV shows or blockbuster films with mass appeal and big stars are the most sought-after, with authenticity and rareness the key.

If you want to dip your toe in the water, coming up on October 1st at the **Canterbury Auction Galleries** is a special sale of rare memorabilia from the estate of acting legend, Peter Cushing OBE (1913-1994), who lived for most of his life in Whitstable, Kent.

With a career spanning six decades, from Star Wars to the Hammer House of Horror films, Sherlock Holmes, Laurel and Hardy and even Dr Who, the highly personal items range from sketches, letters and photographs and toys, right up to a famous pair of slippers he wore on set in Star Wars and a letter informing him of a healthy bonus, bearing a very early Star Wars logo.

With some 400 lots in this special auction, there will be loads of collectible items for film buffs across the world, but the memorabilia also reveals Cushing the man, an accomplished artist.

Devastated by his wife Helen's death in 1971, he went to live with his great friend and assistant of 35 years, Joyce Broughton, and her family. After Joyce's sad death, they have now decided to release the treasures for others to appreciate his many talents.

Here are just a few items that caught our eye

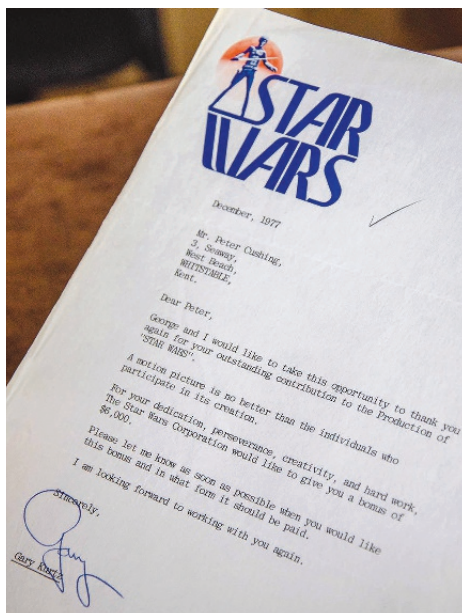


Slippers worn while filming Star Wars

Famously, while filming his role as the evil Death Star commander Grand Moff Tarkin in the first 1977 Star Wars film, Cushing's costume boots pinched his size 12 feet. He asked director George Lucas if he could wear slippers instead and be filmed from the thighs up! Lucas happily complied. Later, a costume department was reputed to have made a tiny pair for a 12ins model for Cushing as a joke. Those slippers and the model together have an estimated value of £15 – 20,000. (Lot 1791.)

Star Wars bonus letter

The 1977 film was such a success, Cushing was awarded a bonus of US \$6,000 for his "dedication, perseverance, creativity, and hard work" - around £25,000 in today's money. The rare letter, dated Dec 1977, from producer Gary Kurtz, carries a very early Star Wars logo, with



a figure wielding a light sabre. It was the first appearance of the now-familiar stacked type on the Star Wars logo. Est £4-500. (Lot 1792.)

Star Wars production story

Another gem for film buffs are fascinating production notes from 20th Century Fox about the upcoming 1977 film, explaining what is required 'for true credibility' and explaining their reasons for choosing Tunisia as a location. Included is a photocopy of a map of Tunisia with three locations highlighted. Est £2-300. (Lot 1789.)

Frankenstein contract

Cushing appeared in various sinister guises – including Baron Frankenstein – in many Hammer horror films. There are many letters and signed photos from this large portion of his career, including his contract for the 1969 film Frankenstein Must Be Destroyed. Est £100-150. (Lot 1557.)



Film posters

Cushing's films were seen worldwide. There's a great, signed poster for the French version of the 1960 film 'The Brides of Dracula', called 'Les Maitresses de Dracula'. At 14ins x 21.5ins it's estimated at £120-160 (Lot 1559.)

Watercolour art

Cushing trained with British artist Edward Seago and his talent grew. One watercolour in the sale is titled 'View of the Golf Links, Whitstable, from my studio window (before housing development hid it)'. It's signed and dedicated to Joyce Broughton and her husband. At 14.25ins x 10.75ins it's estimated at £4-600. (Lot 1567.)

Hand-painted silk scarf

In 1946 Peter was 'resting' between plays and painted his wife, Helen, a scarf. She wore it to



the opening night of a play, where it was spotted by a textile manufacturer, who invited him to learn screen-printing. He took to it and for the rest of that year became a designer and created silk scarves, notably for the Festival of Britain and the Queen's Coronation. The Queen Mother wore one of his creations when they met in 1956. This is the original scarf, signed and dated '46. It's framed with a typed note on the back, "Scarf for Helen". Measuring 28ins x 26ins it's estimated at £6-800. (Lot 1520.)

Wicked caricatures

He would often stop at Whitstable's Tudor Tea Rooms and do a newspaper crossword. In the working-out space he'd draw sharp caricatures of the tea room staff and customers. In the sale is an exercise book with a scores of sharply-drawn caricatures, cut from those newspapers and stuck in. The book, containing other sketches and notes, is signed and dated '90 and has an estimate of £3-400. (Lot 1662.)

* The sale will be held at the Canterbury Auction Galleries on Sunday October 1. Visit thecanterburyauctiongalleries.com for the full catalogue, plus how to register and how to bid. Souvenir printed catalogues are available at £12 or £15 posted.



Gary Miller

PAINTER & DECORATOR



30 years experience specialising in period & country properties across Kent. References available.

24 High Dewar Road, Rainham ME8 8DN

Tel: 01634 235773 or 07971 871433 garymillerdecorator@gmail.com

Whitstable Stove Shop

LOG BURNING * MULTI-FUEL * CAMP COOKING



2 Saddleton Road, CT5 4JB Tel: 01227 266209
whitstablestoveshop.co.uk





Emanuel's

Soft Furnishing Interiors

Bespoke curtain & upholstery work ♦ Unique gifts & lighting ♦ Blinds & shutters
supplied and installed ♦ Motorisation & sun sensor on patio awnings
♦ Track specialist for bay windows ♦ Sale fabric from £3 per metre.

117 Tankerton Road, Whitstable CT5 2AN | 01227 770039 | www.emanuels.co.uk



A FABULOUS FINISH

Gone are the days when painting your house meant grabbing the first pot of magnolia you could find! These days there are so many types of paint on offer that picking one can actually be quite daunting.



Annie Sloan - Satin Paint in Knightsbridge Green and Pointe Silk Piranesi Pink and Adelphi Wall Paint

Paint finishes are just as important as colour, so it's important to know your silk finish from your wipe down when choosing yours. A general rule of thumb is that matte paints are best for low-traffic areas while glosses are better for high-traffic rooms or those that are exposed to high-levels of moisture and/or humidity. The majority of shop bought paints are water based, which is by far and away the best choice for DIY jobs, as they have little to no odour and are far easier to clean up.

Choosing the right paint finishes for your home depends on what and where you're painting, but here's a quick guide:

- Satin, velvet and silk paint finishes are ideal for high-traffic rooms
- Gloss paint finishes are good for bathrooms, kitchens and high-traffic areas, as well as detail work.

- Wipe down paint finishes do exactly what it says on the tin – great for homes with pets and small children
- Bathroom paint finishes are designed to resist moisture
- Kitchen paint finishes are designed to be grease resistant
- Flat paint finishes have the least shine
- Matte paint finishes actually have a very slight sheen and are therefore more durable than flat
- Specialist textural paint finishes can create a bold feature wall.

So read on for more information...

Satin, velvet and silk paint finish

These finishes are similar enough to be interchangeable and are often described as 'mid sheen' paints. They're more durable than matte paints but have a more subtle finish than gloss.

They're ideal for painting kitchen cabinets and skirting boards in low traffic areas. They're



Dead Flat Farrow & Ball

Limewash

Limewash is a classic paint that has been used in homes for centuries. Made from lime and water, and available ready-made, it has a matte finish and can be coloured with natural pigments giving it an almost glowing look. Not only is it easy to apply, but it also has a natural, raw quality that creates a velvety, mottled effect on walls, helping to bring depth and character to interiors.



Limewash, Habitat

also a great solution for small or dark rooms as the reflective qualities play up the available light.

If you do want to paint your bathroom in a mid-sheen finish then you should be OK, but

shower rooms, where there's plenty of steam, may be a little too much for these paints.

Gloss paint finish

As its name suggests, gloss paint has a glossy

finish, with a high sheen and a reflective quality, bouncing light off the surfaces. Because of the high sheen and durability, gloss paint is the traditional choice for trim, balustrades, doors and other such areas. It's a great way to create a feeling of lightness and space in a room.

It has excellent durability, but can be a little too shiny for some people's tastes.

Wipe down, Bathroom and Kitchen Paint Finish

To cater for people who want durability without the high shine finish, interiors stores now stock a variety of specialist finishes. Wipe down paint has been available for a while, and comes in a variety of finishes from matte to gloss. This paint is extremely tough and durable and can be cleaned, usually with soap and water (see manufacturer's recommendations for cleaning). It's perfect for muddy dogs, easily scuffed areas and artistic toddlers.

Like wipe down paint, bathroom paint is very durable, but has been specifically formulated to withstand areas of high humidity without bubbling, cracking or peeling. You can wipe down painted surfaces with a cloth after a steamy shower and the water will simply bead up and roll off. This is great for people who want a tough and durable finish but prefer a softer look.

Kitchen paint is relatively new on the market and, like wipe down paint, is tough and easy to clean. However, unlike traditional wipe down finishes, this paint has been designed to resist grease, making it ideal for going around the oven.

Flat paint finish

With the lowest level of sheen, flat paint finishes are a fantastic choice for period homes as the lack of shine hides any imperfections in centuries old walls. They are however most unforgiving of marks and stains, and can't be wiped down without streaking. As such they should be used in low traffic areas and on ceilings.

Matte paint finish

Matte paint finishes are one of the most popular choices for interior walls and ceilings, particularly in living rooms, as they have the same qualities as flat paint, but are slightly more durable.

Specialist paint finish

Of course, you aren't just limited to traditional paint finishes; there are lots of specialist paint finishes that will bring unique character to your home. From paints with glitter to add a touch of glamour, to metallic and suede emulsions for added pizzazz, to blackboard paints to give the kids a worry free outlet for their creativity, there are myriad options to help you craft a statement in your home.

Distemper for older homes

Distemper is a heritage interior paint and an early form of whitewash made of water, chalk, pigment and a bonding agent like egg or casein. Highly breathable, it is a great choice of paint for older properties and has a soft, powdery finish. However, it is worth noting that distemper is not particularly hardwearing, so is best avoided in high-traffic areas.

Distemper provides a soft, deep matte finish ideally suited to bedrooms, living rooms and dining areas. It is a high opacity, low odour, chalky matte finish, that is available in a wide choice of colours.

Although there are certain paints that ‘work’ better in certain areas, at the end of the day, the finish you choose is down to personal

preference, so spend some time researching what’s available and let your personal style shine through.



Chalk Paint, Annie Sloan



NEPTUNE

Thoughtful design, built to last a lifetime.

Kitchens Furniture Accessories Lighting Paint Design services
Canterbury, 01227 209300 neptune.com



CRAFTING ELEGANCE & SUSTAINABILITY

In a world where mass production often overshadows the beauty of individuality, there exists a realm of timeless elegance and bespoke craftsmanship – welcome to The Victorian House.

Cast iron radiators and baths

Our cast iron radiators are not just sources of warmth, but exquisite pieces that add character to your spaces. Beyond their aesthetic charm, they hold the remarkable ability to transform your living spaces. They are not only functional but also symbolic of our commitment to sustainable living. Their durability ensures longevity, reducing the need for frequent replacements and contributing to a more eco-conscious lifestyle.

Our cast iron baths invite you to indulge in moments of relaxation, combining classic design with modern luxury. They are more than mere fixtures; they're invitations to unwind, escape, and rediscover the art of relaxation. Crafted with meticulous attention to detail, our baths blend classic design with modern functionality, offering an experience that transcends time. Whether you envision a sanctuary of solace or a focal point of opulence, our cast iron baths stand ready to transform your bathing ritual into a symphony of comfort and elegance.

At The Victorian House, we don't just create furniture and decor; we weave stories into every piece. Our bespoke indoor and outdoor granite and marble tables are meticulously crafted, each slab telling a tale of nature's artistry. The interplay of color and texture in our marble vanity units and granite worktops redefine sophistication, while our marble floor and wall tiles transform spaces into timeless works of art.

Glass and vitreous mosaics

Delve into the world of glass and vitreous mosaics, where colours dance and patterns come alive creating stunning visuals that tell stories of tradition and innovation.

Ceiling roses and coving

Elevate your ceilings with our beautifully designed ceiling roses and coving. These ornate details harken back to eras of grandeur, breathing life into every room. With a dedication to preserving history while embracing contemporary sensibilities, The Victorian House ensures that each piece harmonises with your space flawlessly.

Discover our craftsmanship

We invite you to step into our showroom:
**The Two Pines, Sandwich Industrial Estate,
Sandwich, CT13 9LY.**

Invitation to elegance

Amid the clamour of modern living, The Victorian House stands as a testament to the beauty of bespoke craftsmanship. Each creation is more than an object; it's an ode to heritage, a celebration of individuality, and a commitment to sustainability.

Visit www.thevictorianhouse.co.uk, where you'll discover a curated collection that transports you to a world where every piece has a soul. Join us on social media, [@the.victorianhouse](https://www.instagram.com/the.victorianhouse).
Support@thevictorianhouse.co.uk
01304 611 161



THE VICTORIAN HOUSE
BESPOKE
FURNISHINGS & FITTINGS



PalliserDwyer



A full-service residential interior design studio

Design Schemes & Concepts
Space Planning & Layout Design
Kitchen & Bathroom Design
Bespoke Joinery Design
Project Management

info@palliserdwyer.com
www.palliserdwyer.com



PJ ARCHITECTURE

Harbour Offices, Whitstable CT5 1AB

01227 770470

enq@peterjacksonarchitects.co.uk



**WHITE CLIFF
KITCHENS**

White Cliff Kitchens can deliver your kitchen reface at a fraction of the price of replacing an entire kitchen. Discover new colours and designs for worktops, cupboard doors, handles, cornices, plinths and accessories.

Sandwich, Kent CT13 9LY Tel: 07361 356 331
www.whitecliffkitchens.co.uk

ISLAND LIFE

The versatility of kitchen islands

Islands are the epicentre of modern kitchen design, with all other elements revolving around this central point.



Neptune.com

In today's homes, the kitchen is more than just a place for preparing meals. It has become the heart of the house, a multifunctional space where families gather, friends socialise, and culinary magic happens.

One crucial element that has revolutionised kitchen design and functionality is the kitchen island. This versatile and stylish addition has become a staple in contemporary kitchens,

offering numerous benefits that make it an excellent choice for any home.

Select your style

Once you've decided how your island will be used, think about its design and style. Do you want multilevel surfaces, specific shapes or edges, built-in seating, semiattached tables or double islands? Islands provide a smooth transition between dining and living spaces,

so both fashion and function are important. Given that an island is on display from all angles, plenty of storage is key to preventing surfaces from appearing cluttered.

Is your kitchen classic or contemporary? Farmhouse or industrial? In the case of open-concept floor plans, you'll want to integrate your island style with that of the adjacent living space.

The all-purpose island

The all-purpose kitchen island is the Swiss Army knife of kitchen design. With its open design and ample countertop space, it serves multiple purposes, making it an invaluable asset for any kitchen. From meal preparation to casual dining, the all-purpose island

effortlessly blends cooking and socialising. It provides the perfect spot for kids to do their homework while parents cook, or friends to gather around during parties, creating a seamless integration of everyday activities.

The cooking station island

For those passionate about cooking, the cooking station island is a dream come true. Equipped with specialised features such as built-in stovetops, ovens, and even grills, this island allows the chef to do their thing without being isolated from the rest of the family or guests. The cooking station island promotes interaction, as it allows the cook to be part of the conversation while preparing meals, making it an ideal set-up for entertaining.

applebygrange.co.uk





comptonsfaversham.co.uk

The breakfast bar island

Busy mornings often leave little time for a sit-down breakfast. Enter the breakfast bar island, a practical solution for quick, on-the-go meals. With comfortable seating and a raised countertop, this island provides the perfect space for a casual breakfast or a quick snack. It encourages family members to start their day together, fostering a sense of togetherness even on the busiest mornings.

The storage haven island

In every kitchen, storage is a critical concern. The storage haven island comes to the rescue with its smartly-designed cabinets and drawers, offering plenty of space to organise kitchen essentials. From housing pots and pans to utensils and small appliances, this island maximises storage capacity while keeping everything within reach.



whitecliffkitchens.co.uk



The entertainer's island

For those who love to host gatherings and parties, the entertainer's island is a must-have. A grand and spacious design makes it an ideal serving station for drinks and appetisers during social events. Additionally, it often features a wine-rack, a sink, and ample counter space, making it a multi-functional mini-bar!

The customised island

Every kitchen has its unique layout and requirements. A customised island offers a tailored solution, perfectly adapted to the homeowner's needs. It can combine various features such as sinks, cutting boards, and even seating arrangements, catering to the specific preferences and lifestyle of the family. A customised island allows homeowners to express their individuality and style while optimising functionality.



hogwoodhouse.co.uk



hogwoodhouse.co.uk

Materials

Kitchen islands are, of course, another way to express your aesthetic. You can use reclaimed wood for a cottagecore or period feel, or juxtapose your period property with modern plastics and resins. Marble is a gorgeous choice for an island and is hard-wearing and easy to clean. The choices are endless, so ask a designer to give you some inspiration for your home.

Considerations

It's important to make sure that your island leaves enough room to manoeuvre around the rest of your kitchen. If space is going to be a problem, you can always fake an island with a

'peninsula' – a counter that juts out from the rest of cabinetry, with just enough room to slide a couple of bar stools underneath.

Why get a kitchen island?

Kitchen islands significantly expand the available workspace, promoting efficient meal preparation and cooking. With specialised features, such as built-in appliances and ample storage, they streamline kitchen activities, making them time-saving and convenient additions.

Additionally, kitchen islands break down the barriers between the cook and the family, creating a more inclusive and interactive cooking experience. They're a great way

to squeeze extra family time into a busy schedule and, in homes with limited dining space, a kitchen island with seating acts as an alternative dining area.

Kitchen islands have transformed the way we experience and interact with our kitchens. Their versatility, functionality, and social benefits have made them an integral part of modern kitchen design.

Your kitchen island can be a welcoming gathering spot for family and friends for years to come. Given the island's central location, beautiful appearance and many uses, you'll likely end up spending much of your time

at or around it – making it the true heart of your home.

Kitchen Flair – bedroomflair.co.uk



potts.ltd.uk

Bespoke Kitchens, Interiors & Accessories



6c Strand Street Sandwich Kent CT13 9DZ | 01304 784378

Email: info@hogwoodhouse.co.uk | www.hogwoodhouse.co.uk

Hogwood
House
BESPOKE KITCHEN DESIGN



WILLIAMS
PURPOSE MADE JOINERY

01795 521650

60 London Road

Teynham

nr. Sittingbourne

Kent ME9 9QM



WINDOWS | DOORS | STAIRCASES | CONSERVATORIES & MUCH MORE

www.fjwilliamsjoinery.co.uk

info@fjwilliamsjoinery.co.uk

Craftsmanship IS TIMELESS

When you own a period home, it's only right that you would want to use the very best products and services in its upkeep.

When it comes to joinery and carpentry, it's fair to say that not all companies were created equal, but one Kent based company that truly stands out from the crowd is F.J. Williams and Son.

F.J. Williams and Son was established by Frederick Williams over 50 years ago, and was taken over by his son David almost 20 years ago. Having worked with his father since leaving school, David understood that the key to a long standing business was to provide outstanding quality on every single job, with no exceptions.

Operating out of a well-equipped factory in the small village of Teynham, the company is proud to say that the majority of their work is repeat business from customers who have experienced this quality first hand.

The staff at F.J. Williams and Son believe not only in this quality of craftsmanship, but also in the quality of their customer service – a key factor in the number of referrals they regularly receive, which have kept the business thriving since the 1970s.

Only the best quality timbers and materials are chosen for projects that range from windows and doors to conservatories and shop fronts. They

never compromise on this quality for the sake of cost, and are at the forefront of the industry when it comes to bespoke offerings.

The company is proud to have staff that are passionate about bespoke joinery and deliver quality products. A big part of F.J. Williams and Son's ethos is the belief that a company is only as good as its team, and Alison (David's sister) and Julia (David's Wife) work hard in the office maintaining the rigorous standards that have put the business on the map.

If you have a Joinery project in mind or would like the team to conduct a site visit please do not hesitate to contact Alison or Julia on 01795 521650.





BAGHAM BARN ANTIQUES & INTERIORS

Canterbury Road (A28) Chilham Kent CT4 8DU



Tel: 01227 732522 | www.baghambarnantiques.com



Open Thursday, Friday and Sunday 10am-4pm and Saturday 10am-5pm.
TEA ROOM & LARGE CAR PARK



Catherine Southon
will be at the Barn for
a free valuation day on
Thursday 12th October
from 11am-3pm. Phone to
book a time or just come
along on the day



RI'S TEAROOM

Serving freshly
prepared delicious
food inside or
in the garden





 **dewitt**[™]
FLOORING SPECIALISTS
SINCE 1966

HARVEY MARIA[®]
— FABULOUS FLOORS —

DEWITT RESIDENTIAL FLOORING LIMITED

PLEASE CONTACT US TO DISCUSS YOUR FLOORING REQUIREMENTS: 01622 858940

9 HIGH STREET, LENHAM, KENT. ME17 2QD | WWW.DEWITTFLOORS.CO.UK

The Antique Oak Flooring Company

SPECIALISTS IN ANTIQUE AND RECLAIMED FLOORING



VIEWING BY APPOINTMENT

Willow Court Farm, Bilsington Road, Ruckinge, Ashford, Kent TN26 2PB

T: 01233 659508 M: 07733 263540 www.antiqueoakflooring.com

WALLS AND FLOORS

the foundations of your interiors

When it comes to interior design, there is nothing more important than getting the 'bare bones' just right.



Furniture and ornaments are all very well, but ideally they should be taking second place to your walls and flooring. Get these right

and the rest of the room will come together easily.

FLOORS

As the base upon which a home is built, floors are one of the most important design aspects of any property and you should give considerable thought to how you want them to appear.

The first rule of flooring is that quality is key. When it comes to major home improvement projects, always trust the experts and look for local firms with plenty of experience.

The type of flooring you choose will be largely dependent on where it's going to go and how it will be affected by your lifestyle.

Hardwood

With many different types of wood and finish available, hardwood floors create an air of opulence and can feel both classy and cosy at the same time. Perfect for covering large areas, particularly in dining or living rooms, hardwood floors look extremely elegant with a few carefully-chosen rugs dotted around.

Laminate

Laminate is the 'easy' alternative to hardwood, as it is available in 'wood' finish as well as a range of other finishes, colours and styles. Simple to fit and spill-proof, laminate is an excellent choice for kitchens and bathrooms, especially now that it's shaken off its old-fashioned image. Although previously thought



antiqueoakflooring.com

of as 'cheap and cheerful', laminate is now far more attractive than in the past and can lend a high-quality feel to a room, making it ideal if you have small children as you won't feel bad about replacing it in a few years.

Tiles

Tiles are perfect for bathrooms, kitchens and conservatories because they're tough, waterproof and easy to clean. Available in a wide range of finishes from bright ceramics to traditional stone, tiles create a simply stunning visual effect. A tile floor can be cold, however, and it may be wise to consider scatter rugs or

even under-floor heating, particularly in bathrooms.

Carpet

Good old-fashioned carpet has been given a 21st century facelift with new fabrics that are waterproof, stainproof and easy to clean. Although bathrooms that get very wet may benefit from tiling or laminate, there is a carpet to suit most situations. Colourful, comfortable and easy to change, carpets are a great way to make a statement and provide a soft landing for little ones learning to walk.



thestonetilewarehouse.co.uk





Uniquely amico

Expertly installed quality carpet and flooring

64-65 High Street, Wingham, Canterbury, Kent, CT3 3BJ

Tel: 01227 721 938 www.redflooring.co.uk



orlestoneoak.co.uk

Solid oak flooring is one of the most popular solid hardwood flooring options, and for good reason too. Timeless and luxurious in look and feel, but durable and hard-wearing too, a solid oak floor is a premier product that adds value and will last generations.

WALLS

The walls in your period home are extremely important, as they provide the backdrop for the rest of your décor.

We've already discussed paint in this issue, but what other options do you have?

Panelling

Panelling can look absolutely stunning in a period home, particularly Georgian and Victorian models, where high ceilings and big windows make a real feature of it. Wood panelling lends an air of class but can look heavy and dark, so may not be suitable for smaller or older homes. However, panelling is now available in a range of lightweight, versatile materials, which can add depth and interest to a wall without being overbearing.

Wallpaper

Wallpaper had fallen out of favour with interior designers for a while, but is back with a vengeance and more varied than ever. A vintage design pairs perfectly with a period home and you can even get your own or specially-commissioned designs printed up to match your aesthetic perfectly. If a whole room of pattern seems a little cloying, then try creating a feature wall with a truly outrageous paper and leave the rest plain. For those who like to take things to extremes, you can even get heat-sensitive designs that change as the room warms up.

Tiles

Tiles can be harder to fit in old properties with 'wonky' walls, but a professional plasterer can put you on the right track. Tiles are, of course, perfect for kitchens and bathrooms, where wallpaper risks peeling in high humidity, plus they're easy to clean and hard-wearing just like floor tiles. Again you might even consider a feature wall with extravagant tiling, juxtaposed against a plain tile on the other walls.





Little extras

These days many people are choosing a plain wall with added oomph, using wall art, designer shelving or even decals.

Once the preserve of kids and their bikes, decals are now an ultra-chic way to bring design flair to your walls without the effort of papering or hiring an artist. Far from looking like 'stickers', modern wall decals fit seamlessly to your walls and come in large-scale and intricate designs that might otherwise be impossible to create. What's more, they're usually pretty easy to remove, so you can change your look without calling in the decorators.

thestonetilewarehouse.co.uk



As well as a vast stock of rugs we have an ever-growing demand for custom-made, designed rugs. Due to our long standing collaboration with weavers across the globe, we can create rugs in any design and colour.



New Handmade Rugs showroom now open

The Old Bank, 84 High Street, Rye, East Sussex TN31 7ER

Call. 01797 360353 | rye@handmaderugs.co.uk | www.handmaderugs.co.uk



Lampshade, £249
madescotland.com

Vase, £18
mintandmay.co.uk



Bread basket, £10.29
waltonshop.co.uk

Candle holder, £9.95
rexlondon.com



Alphabet mug, £15
portmeiron.co.uk



Alpine doves cushion, £125
janconstantine.com



Hand painted tin, £35
minchandminch.com

Retro phone, £50
cuckooland.com



Red hot GET THE LOOK



Throw, £30
waltonshop.co.uk



Vase, £12
dunelm.com



Burnham red paint, from £5
neptune.com

Watermelon bowl, £80
micucci.co.uk



Tagine, £99,
Copperfields of Whitstable



Wall light, £300
loomlightdesign.com



Chair, £1124
sweetpeaandwillow.com



Pepper mill, £49,
Copperfields of Whitstable



Cushion, £62
fabfunky.com



Red/white floor tiles,
dewittfloors.co.uk

Dorion Scott 'Dress with Bow' Oil
on Panel £4,400 Fairfax Gallery



Casserole set £149
procook.co.uk



Chair, £790,
emanuels.co.uk



Hurricane lantern, £42.95
berryuseful.co.uk



Everhot stove, £1,495
rubyandjo.co.uk

Lobster oven gloves, £19.95
annabeljames.co.uk



Clock, £29.95
annabeljames.co.uk



Berry wreath, £22.99
tkmaxx.com



Kitchen stool, £349
wrappedstudio.co.uk



Espresso maker, £49.50
johnlewis.com



Teapot, £32,
Copperfields of Whitstable



Footrest, from £595
roseandgrey.co.uk



Glass frog, £29,
emanuels.co.uk



Pooky table lamp £85,
shade, £69
oohhowlovely.co.uk



Wooden tray, £85
musthavebins.co.uk



Hay strap mirror, £329
nest.co.uk



Aga hob cover, £22
maisonelhorla.com



SCRAP METAL RECYCLING

Polite & friendly service
Fully licensed
Clearance of all metals

Unfortunately we cannot take fridges or freezers

Jason 07840 081990

7 days a week

Anthony Swaine ARCHITECTURE LTD

Conservation • Design Consultancy • Listed Buildings
Urban Design • Joinery Detailing • Traditional Shopfronts



**Initial consultation undertaken
free of charge**

**Specialising in traditional design & works to
historic buildings; timber framed structures; &
new buildings in the historic context**

The Bastion Tower,
16 Pound Lane,
Canterbury,
Kent CT1 2BZ

Tel: 01227 462680
mail@anthonyswaine.co.uk
www.anthonyswaine.co.uk

**We are the UK's leading
restorer and repairer of
traditional, distinctive
oast cowl & kiln roofs.**

New cowl construction. Painting
& cleaning. Repair & maintenance.
Also specialising in Kent peg tile
roof repairs and kiln tile repairs.

Trusted over four family
generations by royalty, businesses
& homeowners alike.



Book a no-obligation visit
01622 725 898 / 07973 332 790
www.dudeandarnette.co.uk



**DUDE &
ARNETTE**
OAST COWL CONSTRUCTION



Oast owners

THE WHITE MILL

We witness the exciting spectacle of the White Mill's cap replacement

The White Mill, Sandwich is a smock windmill, built around 1760. After a busy working life, near dereliction, then resurrection in the 1960s as the central exhibit of the White Mill Rural Heritage Centre, it is now nearing the completion of a thorough and faithful restoration, which is expected to culminate in the mill becoming one of the oldest working mills in Britain.

In 2018 the cap was removed for ease of access, so that the rebuilding of its entire internal workings could be undertaken. This task is now complete and the cap has now been replaced.

At a later date a new set of sweeps (the Kentish name for 'sails') will be reinstated.

There is still detailed work to be done in renovating the internal grinding machinery. When this is complete, it is hoped that the Mill will be in full working order.

For more information visit

www.whitemillheritagecentre.org.uk



A reputation built on quality
craftsmanship and service

*Karl
Terry*

Roofing Contractors



Kent Peg Tiling & Listed Building Specialists.
Conservation and renovation specialists.
High quality work by experienced craftsman.
National Award Winning Company.

01797 270 268 | kentpegs.com



JAMES CLAGUE ARCHITECTS

Architectural Practice & Listed Building Specialists

Reimagining historic architecture for present day use requires a delicate balance of heritage and modernity.

Where appropriate we incorporate inspiring design and the latest technology into the fabric of a historic building, allowing the occupants to be a part of its on-going narrative without compromising their comfort.

01227 649 073

info@jamesclague.co.uk



www.jamesclague.co.uk

Listed Buildings

| Extensions

| Renovations

| Refurbishments

| Conversions

BSF STRUCTURAL & CIVIL ENGINEERS



Trusted by professionals for more than four decades, BSF Consulting Engineers is an established Structural and Civil Engineering company in the South East.

We specialise in projects relating to property, land, building and structures, groundworks, foundations, drainage, investigations, architecture, design, surveying, engineering and construction.

We are based in the historical City of Canterbury and cover all of Kent, Sussex, Surrey and London.

📞 01227 464811 🌐 bsfengineering.co.uk 📍 53/54 St Dunstan's Street, Canterbury, Kent CT2 8BS



SPECIALISTS IN ROOFING



Canterbury Roofing and Building is a family-run business with over 35 years' experience working in Kent and surrounding areas. We have vast experience of conservation and other roofing works.

- Guttering
- Flat roofing
- Velux and sky lights
- Conservation work
- Tiling
- Pointing and chimney work
- Slating
- Lead work



**FOR MORE INFORMATION
AND TO CONTACT US:**

www.canterburyroofing.com

Tel: 01233 647867

or 07976 325520

info@canterburyroofing.com

INSULATING YOUR PERIOD HOME



The latest Government research suggests that energy efficient homes sell for around 14% more than uninsulated properties, not to mention being far more cost effective to heat.

This can be particularly significant in period homes, which are usually colder than modern properties and may have a host of other running costs associated with them.

Approximately half of all houses built before 1929 (regardless of size) have EPC (Energy Performance Certificate) ratings of E or lower, compared with just 3% of houses built in the last 30 years.

For those worried about their home's aesthetic: don't be. Whilst energy generation may be showy (solar panels, wires, cables etc) energy efficiency is mostly hidden; so much so that EPC assessors often forget to even ask about it!

Quick tip: as energy efficiency measures are hidden, you will need to make sure that you retain your certificates as proof of installation. There are a number of ways in which you can make your home more energy-efficient:

LOFT INSULATION

This is perhaps the most basic and is a simple matter of DIY-ing with materials bought from local suppliers. If your loft is large or a bit tricky, you can call in the professionals for a quick and easy fix.

The most popular method for loft insulation is spray foam, but insulating boards can also be used.

WALL INSULATION

Owners of period homes often assume that they're ineligible for wall insulation as houses built before 1920 will typically have solid rather than cavity walls. However, solid wall insulation is easily achievable even in older properties. (The exception is listed buildings, where you will need to contact the relevant authority to see what can and can't be fitted.)

Solid wall insulation, which must meet building regulations and a set U-value (a figure that indicates how quickly heat passes through),

reduces condensation as well as saving heat.

It's possible to fit both external and internal solid wall insulation, but this is overkill and can look messy on the outside. However, there are two main options for fitting internal insulation without ruining your décor.

Firstly, you can use rigid prefabricated boards or attach a timber or metal studwork frame to the wall and fill this with insulation before plastering. This is the more costly option and can add as much as 10mm to your wall, effectively shrinking the room. The other option is to hang a much thinner veneer over the insulation. Although this can be a tedious process and doesn't have the structural integrity of the previous method, it is nonetheless popular and has been praised by people in the industry.

Of course, if your property is slightly newer, then cavity wall insulation is the best option. There are three types: blown mineral fibre (strands of fibreglass or mineral wool that are forced into the cavity using compressed air), polystyrene beads or granules (either held together with resin or installed loosely), and urea formaldehyde foam (injected into the cavity where it then expands to fill the gap). Cavity wall insulation must be fitted by an expert, and your chosen company will be able to advise you on the best of these three options.



WINDOW INSULATION

Windows account for nearly 20% of the heat lost in your home, but bog-standard double glazing isn't always an option in an older property. However, thanks to rising demand, there are now a number of companies that specialise in creating sympathetic reproductions of period-style windows, with the added bonus of double glazing.

At the very least you may want to consider replacing original glass, as this tends to be far thinner than its modern counterpart – this option tends to be approved even in listed buildings (although you should always check). Older frames may also need replacing





or renovating as they can warp. Specialist companies can replace sashes with recessed brush strips as well as replace putty, and DIY draught strips are easy to fit to timber frames.

PIPE INSULATION

Pipe insulation is a foam tube wrapped around the pipes carrying hot water from your boiler to your hot water tank.

It's a simple and effective way to reduce heat loss and stop your pipes from freezing in cold weather. By keeping your water warm for longer, you'll use your boiler less. Pipe insulation is easy to fit, and the materials are available at all good DIY stores.

FLOOR INSULATION

Initially, it pays to take a close look at your floors. The floor contributes, on average, 15% of

heat loss from your property. Floor insulation works by creating an insulating layer between your floorboards and joists – a must for older wooden flooring.

It's advisable to call in the experts for this, as any sign of rot or damp under the boards must be dealt with before insulation is installed.

The three main types of floor insulation are: insulation boards/EPS sheets – durable, crack-resistant and waterproof; spray foam – like using spray foam in your roof, and provides excellent heat retention; cork, wood, or cellulose – less effective but can be used as an adjunct to other materials.

Insulating an entire house is a big job, so if you need to prioritise we recommend starting with the walls, as these are responsible for 35-40% of heat loss in your home.



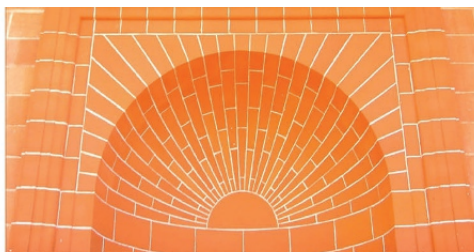
HERITAGE BRICKWORK RESTORATION LTD

‡ Lime Mortar Specialists ‡

‡ Historic Brickwork Repairs ‡
& Repointing

‡ Gauged Brickwork ‡

Tel: 01227 264 737 Mob: 07866 388 962
info@heritagebrickworkrestoration.co.uk
www.heritagebrickworkrestoration.co.uk



GEORGIAN BRICKWORK

www.georgianbrickwork.co.uk

conserving your heritage brickwork for the future

All aspects of heritage brickwork undertaken, including lime mortar pointing, tuck pointing, gauged arches, and carved brickwork. Clients include homeowners and also contractors requiring a specialist service.

Professional Development Sessions
available to experienced heritage bricklayers

For more information please contact
Charles Reilly
e: info@georgianbrickwork.co.uk
m: 07732 975 349
w: www.georgianbrickwork.co.uk



OLIVER MANNING PRESS

CABINET MAKER, FURNITURE DESIGNER, FURNITURE RESTORER,
BESPOKE FURNITURE MADE TO ORDER - FREESTANDING OR FITTED



For more information contact: 01227 731765 or 07808 001844

www.olivermanningpress-bespoke.com olivermanningpress@gmail.com



ORLESTONE OAK

KENT · ENGLAND



Bespoke Flooring

LONG & WIDE · PRODUCED IN KENT · FINISHED BY HAND



JOINERY



OAK FRAMED BUILDINGS



DECKING



CLADDING

For more information on pricing or fitting, or to place an order

CALL **01233 732179** VISIT **orlestoneoak.co.uk**

A.T. PALMER LTD

RESTORATION SPECIALISTS EST.1949

OVER 70 YEARS IN BUSINESS



| EMPLOYED SKILLED WORKFORCE
| RENOVATIONS & EXTENSIONS
| CONVERSIONS & ALTERATIONS
| DESIGN & BUILD

T: 01233 770077

SMARDEN BUSINESS ESTATE, TN27 8QL

atpalmer.co.uk

First class carriage house restoration

The Listed Carriage House at the property of Rock House that used to house the horses was anything but 'stable' but that was soon to change.



View from the top of the staircase, looking down shows the different materials used

In the course of seeking out conservation projects that will be of interest to our readers, it's always good to come across something that is a bit out of left field, that isn't the typical highly desirable country residence, or historic 'hall house' that has become the next fashionable haunt for fine dining and short stays. Here we have something that has more humble origins, but that in our eyes is equally newsworthy and also allows us to focus on, not just the building but the companies that have brought it back from the brink of collapse and repurposed it into a useful and functional space that is a beautiful combination of modern design and bygone charm, whilst retaining its character and integrity.

Bathroom



View of cobbled floor and horse stalls with staircase

The Carriage House at Chipsted in Kent, is a subsidiary building that is in the grounds of the Rock House, a Grade II Listed Building which is described as an 'irregular house largely dating back to the 16th Century' which has had many restorations and additions over recent centuries, including moulded plastered eaves that are stuccoed with incised lines, a Tudor arched traceried door with hoodmoulds and Regency painted panelling, which means it could be worthy of a whole article of its own, but maybe that's for another time?

For now, we are focussing on the Carriage House, which is also Grade II Listed, Circa 1800s and described as 'stable buildings and cobbled yard to the west of Rock House, a short range of weatherboarded outbuildings with tiled roofs'. Not surprisingly its original use was for storing carriages and stabling the horses



Interior view before restoration

for the residents of Rock House, however after many decades of neglect the building was in a state of serious disrepair and had been shored up with props. If something wasn't done soon it was in danger of complete collapse.

The owners engaged the renowned specialist conservation Architects, Clague Architects. With an outstanding reputation of achieving many successful historic restoration and interior design projects over 80 years, and with 60 architects based in Canterbury, Harpenden and London, they were tasked with coming up with a rescue plan and reimagining the Carriage House's future life for the 21st century, and beyond. Once the proposal was agreed with the clients, Clague Architects sought and gained Listed consent for major repair and change of use to an office, gym and storage areas.

The team at Clague Architects, with the project lead, George Esdaile have created an inspired and imaginative plan that makes the

best possible use of the interior space, which is light, airy and largely open plan, whilst retaining the character of the Carriage House. The interiors have been detailed and finished to a high standard with Holly Cook of Clague Architects working closely with the clients to specify the varied finishes and materials. This attention to detail was echoed in the treatment and restoration of the exterior of the Carriage House and the landscaping also.

A T Palmer Ltd, a company that is highly respected as historic building, conservation

and restoration specialist contractors were chosen to carry out the works. They are a long established, multi-generational family business with over seven decades of experience. The Company prides itself in having a highly skilled workforce, covering many disciplines including key trades like: carpenters, decorators, brick workers, specialist joiners, traditional crafts persons and ground workers, so they are the ideal fit for the project.

A glance at a photo of the interior once the work had begun shows the extent to which the old building had deteriorated. Additional temporary supports were installed to allow the removal of internal claddings and rotten timbers. New foundations were dug, steel framework installed to support floors, major timberwork replaced or sensitively repaired. Great efforts were made to retain and reuse original materials where possible to respect the building's integrity and character.

On the outside there were extensive works to

be sensitively carried out as well, including major groundworks to retain the rear ragstone elevation. The roofs were strengthened throughout, and the existing slate and Kent Peg tiles were removed and re-laid, re-using most of the original tiles. This respect to the existing old building was echoed throughout the works, including the careful rebuild of an external ragstone and brickwork wall to match what was there. The before and after photos show the huge extent of the works that were needed and indeed carried out in order for the Carriage House to be useable once again; it is an excellent example of a sensitive conservation project on a listed building.

Having consolidated the old building by ensuring all that could be done to make it structurally sound again, A T Palmer's team began the painstaking work of carrying out the detailed plans for the interior, which entailed fully insulating, plastering and decorating. Their skilled joiners fitted beautiful, new woodwork and engineered oak flooring throughout, including an impressive feature staircase, this is a masterpiece with solid iroko hardwood open treads which cantilever out from a steel stringer which is hidden from view by being boxed into the wall. The treads also sit on supporting structural steels that are notched into the treads. Matte black powder coated steel spindles and structural bars echo the existing ironmongery throughout the Carriage House.



Before and after

The pièce de résistance is a graceful undulating, elliptical bespoke oak handrail.

The kitchenette and shower room have been finished with equal attention to detail, with a black and white theme as requested by the client. The black ironmongery is continued in the shower room which is also reflected in the choice of colour for the sanitary ware fixtures, with white units, and in the shower room there are white tiles throughout; hexagonal mosaics on the floor, with metro tiles on the walls, the shower niche, with wall

lighting illuminating the mirror area. The overall effect is smart, chic, minimal and luxurious monochrome elegance.

Another detail on the interior that must be mentioned is the excavation of the existing cobbles on the ground floor. These were lifted, cleaned and painstakingly re-laid, retaining the important feature of the original stable. The stalls where the horses would have been housed and the horses' hay feeders have been reinstated, a very nice touch, tipping its hat to the original use of the building.

Extensive works to the external landscaping has been carried out, with a large change in level between the front and rear of the building. To the rear, a stepped landscaped garden has been designed and formed from railway sleepers, with brickwork retaining walls, a York stone paved path, steps and a flint retaining wall at the base of the landscaping.

The finished result is a total transformation and a testament to all involved with the project – with our thanks to the clients for their kind permission to feature this stunning project, to the vision and imagination of the architects, Clague Architects and to the contractors, A T Palmer Ltd, who have made such a fantastic job of making this sensitive Listed building restoration a reality.

This is obviously a truly successful project and to conclude, here's what the clients Carol Welu and Richard Surrey had to say:

"We are delighted with the restoration of



Interior of top floor

the Carriage House and deeply appreciative of the wonderful work done by all involved, including Clague Architects, Adrian Cox (structural engineer) and AT Palmer Ltd. The structure was in a most challenging condition and we were impressed with the creativity and can-do attitude displayed in overcoming serious structural issues. We loved Clague's designs, which are striking and make maximum use of available spaces. AT Palmer Ltd worked with consistent care and remarkable attention to detail. Chris Green and his team were a delight to work with, always responsive and gave excellent advice on how to achieve a first-rate restoration, while remaining practical and cost sensitive, and they produced a superb result."

For more information go to: www.clague.co.uk or atpalmer.co.uk



- Ecclesiastical work
- Flint work
- Heritage brickwork
- Lime pointing/render
- Fully insured
- New builds & extensions
- All work quoted for
- Traditionally trained craftsmen

Tel: 07856 266795

e-mail: conservation-construction@outlook.com



DOLMEN
ENGLISH VERNACULAR CARPENTRY
KENT

**CONSERVATION
& JOINERY**

BESPOKE ARCHITECTURAL JOINERY
ENGLISH VERNACULAR CARPENTRY | HANDMADE KITCHENS
PERIOD DOORS AND WINDOWS | SUSTAINABLE TIMBER SOURCING

dolmenjoinery.co.uk | projects@dolmenjoinery.co.uk | 01708 732 813 | 01233 746 301 | [@dolmenconservation](https://www.instagram.com/dolmenconservation)
WOODCHURCH - KENT



CLAGUE ARCHITECTS

PLANNING &
LISTED BUILDING
APPLICATIONS

01227 762060 | www.clague.co.uk | georgeesdaile@clague.co.uk



YOUR TABLE AWAITS

VISIT ROCHESTER CATHEDRAL TO SEE THE SPECTACULAR
13M LONG 'TABLE FOR THE NATION' MADE FROM THE WOOD
OF A 5,000 YEAR OLD FOSSILISED BLACK OAK TREE.

In 2012 a giant black oak tree was discovered in a field at Wissington Fen in East Anglia.

A 13.2m long section of an immense tree had been preserved deep in the peat for 5000 years. The tree is believed to have been 55 metres tall. For comparison, a present day oak tree is around 20 metres. Black oak is the nation's rarest and most precious hardwood. It was decided that this incredible discovery needed to be preserved for future generations. Over ten years a team of privately funded specialist crafts people created a stunning sculptured table known as the Jubilee Oak Table.

The black oak was discovered in the year of HM the Queen's Diamond Jubilee and was completed and unveiled in 2022, the year of HM the Queen's Platinum Jubilee. The

table was dedicated to HM the Queen and is a "Table for the Nation." The table has only been on public view once before at Ely Cathedral throughout 2022.



ROCHESTER CATHEDRAL DISPLAY

Alongside the table will be panels detailing the history of black oak (or bog oak). They will also detail elements of the 10 year project to turn the wood into a functioning table.

“It is a real privilege to be hosting the Fenland Black Oak Table. A wonder of creation and the work of some very skilled hands. As the ancient cathedral builders sought to inspire, so this extraordinary table engenders its own sense of awe and gratitude. Not only in the exquisite application of design, imagination, beauty, and perseverance, but in the inspiring story that brought this sleeping giant to life bringing people together, once again, around its mighty girth. People from different continents have given time, skills, and resources freely in this truly selfless endeavour. Furthermore, it continues to involve people of goodwill. The heavenly vision of many nations and peoples gathered around a common table, eating, and drinking in the presence of God is one which at the Cathedral we will aspire to replicate over the coming year as we invite others to share in this remarkable story with genuine thanksgiving.”

Dean Philip, Rochester

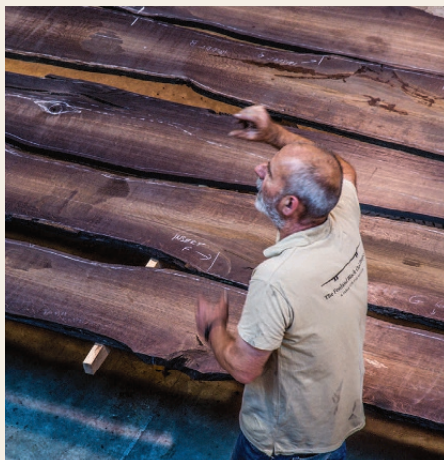
HOW TO SEE THE TABLE

The table will be on display at Rochester Cathedral until 1st March 2024, and will be available to view in the Nave during general opening hours. Due to the size of the table it will be moved between the main Nave and the Nave aisle throughout the year depending on the programme.

For more information visit:

www.thefenlandblackoakproject.co.uk

www.rochestercathedral.org





HERITAGE PAINT REMOVAL

RESTORING YOUR BUILDING TO IT'S ORIGINAL BEAUTY

- DOFF INTEGRA PROFESSIONAL CLEANING -
EFFECTIVE IN REMOVING

- ✦ PAINT, WAX COATINGS & GRAFFITI
- ✦ POLLUTION STAINING
- ✦ BITUMEN, OIL & GREASE
- ✦ ALGAE, MOSS & FUNGI

- CHEMICAL FREE - QUICK DRYING -
- NON HARMFUL TO ALL MASONRY -

Tel. 01227 264737 Mob. 07812 590 888
info@heritagepaintremoval.co.uk
www.heritagepaintremoval.co.uk

Jane Elizabeth Architects



Planning Permission - Building Regulations -
Listed Buildings - Barn Conversions -
Extensions - Renovations

Contact Us

Tel: 01622 884373 Mobile: 07715 860787
janeelizabetharchitects@gmail.com
www.janeelizabetharchitects.co.uk



ASH

SCAFFOLDING LTD

Conservation Scaffolding Specialists



Smarden Business Estate, Smarden, Ashford TN27 8QL
Tel: 01233 770373 email: info@ashscaffoldingltd.co.uk
www.ashscaffoldingltd.co.uk

RESTORATION & CONSERVATION

SERVICES

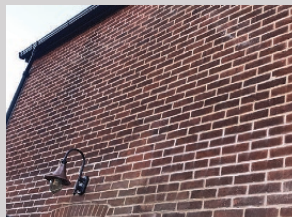
- Lime mortar pointing
- Brick and stone replacement
- Structural crack repairs & remedial wall ties
- Natural damp proofing
- Professional brick and stone cleaning
- Render removal to allow masonry to breathe



ABOUT US

Prestige Brickwork is a Canterbury based restoration company that specialises in the conservation of period properties throughout Kent. We offer all types of expert brickwork repairs and repointing. We are specialists in working with lime mortar.

All of our staff members are fully committed to providing you with a stress free service. Our tradesmen are professional and are experts in bringing the beauty of your home back to life.



Tel: 01227 908563 or 07954 409840

www.prestigebrickwork.co.uk

email: prestigebrickworkkent@gmail.com

Supporting communities in Kent since 1781.

With offices across Kent and London,
we provide specialist legal services for
individuals and businesses in the Southeast.

- + Contracts & Transactions
- + Conveyancing
- + Employment
- + Family
- + Licensing
- + Probate
- + Property
- + Tax & Estate Planning
- + Wills

To find out how we can help,
call us on **01622 698000**
or email enquiries@wmlaw.uk

whitehead-monckton.co.uk



WM Whitehead
Monckton

Whitehead Monckton Limited (no. 08366029), registered in England & Wales.
Registered office 5 Eclipse Park, Maidstone, Kent, ME14 3EN. Authorised
and regulated by the Solicitors Regulation Authority under no. 608279.



Liverton Place, Sandway

A unique and well-restored Grade II Listed country home offering six bedrooms, four reception rooms, two cellars and an abundance of character features over 3,269 square feet, in a plot of 0.549 Acres, with detached double garage and feature outdoor kitchen.

Liverton Place records date back as far as 1720 having been a former coaching inn used as a stopover point for weary travellers to change horses, then converted to three cottages and

finally to the layout you see today. The current vendors have spent time and care improving the home with new bathrooms, a new Aga, a traditional timber framed oak double garage, a wonderful outdoor kitchen along with substantial landscaping to the rear garden to create a beautifully characterful yet practical family residence.

The accommodation is arranged over four floors to include an entrance hall, two cellars, drawing room with log burner, dining room







with inglenook fire place, study, snug, garden room, kitchen/breakfast room, utility and downstairs cloakroom.

To the first floor, there is a master bedroom with en-suite bathroom, three further bedrooms and a main bathroom. Two staircases lead to the second floor in the roof offering two further double bedrooms.

Outside, the property is approached by an electric-gated gravel driveway with off road parking for numerous vehicles, leading to a recently added double oak garage with mezzanine. The landscaped grounds are predominantly laid to lawn and are ideal for entertaining/family with a fabulous outdoor kitchen and pizza oven, greenhouse and variety of mature shrubs, trees and borders.

The details

Grade II Listed Former Coaching Inn |
Believed to Date Back to 1720 | Beautiful
Grade II Listed Country Home | Six
Bedrooms | En-suite to Main Bedroom
| Kitchen and Separate Utility Room |
Drawing Room & Dining Room | Study,
Snug & Garden Room | Two Cellars | 3,269
sq ft of Accommodation | Plot of 0.549 Acre |
Outdoor Kitchen & Pizza Oven | Traditional
Timber Framed Double Garage.
Offers in excess of £1,000,000
Viewing by appointment only
Saddlers, Reed House, 3 Old Ashford Road,
Charing TN27 0JG Tel: 01233 713127
www.saddlersresidential.co.uk



Old Barn House, Charing

A substantial and extremely handsome six bedroom country house occupying a private plot of 1.33 acres backing onto fields, situated just half a mile from the centre of the historic village of Charing. Old Barn House enjoys a place in local history having started life as a medieval barn known as Pierce Farm Barn, originally situated in a different location in Charing. It was used as the local YMCA Youth Hostel for many years before being dismantled and moved to its present location.

Subsequently extended and improved in a most sympathetic manner over the years, the property now offers extensive and very versatile

accommodation featuring a wealth of character and charm arranged over three floors.

The ground floor includes an impressive entrance hall with full height vaulted beamed ceiling, drawing room with open fireplace, dining room with feature fireplace, sitting room and pantry, study, laundry, double glazed conservatory, Smallbone fitted kitchen/breakfast room, utility room and two cloakrooms.

A heavy timbered staircase rises to an equally impressive first floor galleried landing with a seating area overlooking the extensive lawned front garden. The principal bedroom suite with a contemporary shower room and







recently added bathroom is accessed via its own private landing, a second bedroom also has its own en-suite shower room and two further first floor bedrooms are complimented by a family bathroom with a delightful view over the rear garden. A further staircase leads from the landing to the second floor where two additional bedrooms can be found.

The property is approached via a private driveway leading into sweeping lawned grounds of 1.33 acres with extensive parking space and a garage in the rear garden suitable for storing garden machinery. The grounds back onto open fields providing a real sense of space and privacy, whilst being so conveniently placed for the village and railway station.

We recommend viewing this fine property in order to fully appreciate the size and versatility of accommodation on offer.

The details

Substantial Unlisted Country House | 4,370
sq ft of Accommodation | Six Bedrooms,
Five Reception Rooms, Three Bathrooms
| 1.33 Acres of Parkland Style Grounds |
Wealth of Character & Original Features
| Smallbone Kitchen/Breakfast Room |
Stunning Landscaped Rear Garden | Private
Position Set Back From The Road| Within
0.5 Mile of Charing Village Centre.

Guide price £1,350,000

Viewing by appointment only

Saddlers, Reed House,

3 Old Ashford Road, Charing TN27 0JG

Tel: 01233 713127

www.saddlersresidential.co.uk



The best of Kent's food and drink experiences including restaurants, bars, cafés, pubs, farm shops, delis, butchers and markets, as well as recipes and local produce.

SMALL BATCH LONDON DRY

WHITSTABLE HARBOUR GIN

WHERE THE WORLD IS YOUR OYSTER



Come and see us at our
Whitstable Harbour Gin Store
- Unit 2 South Quay Shed -
Whitstable CT5 1AB

OUR PREMIER BATCH DISTILLED JUNE 21ST

ONLINE SHOP:
WHITSTABLEHARBOURGIN.CO.UK





THE OYSTER PEARL

PUB & RESTAURANT



**FOR LOCALLY SOURCED & FRESHLY
PREPARED DISHES EVERY DAY**

British and Pan-Asian cuisine. Serving high quality and creative dishes.



185 FAVERSHAM ROAD, WHITSTABLE CT5 4BJ • TEL: 01227 272705

Autumn 2023 • CONSERVATION NEWS www.conservationalnews.co.uk

WWW.THEOYSTERPEARLRESTAURANT.COM



97



A lovely rich soup. Serve it warm with a dollop of Greek yoghurt and some just-torn-up basil leaves; or, if it's a beautiful warm autumn day, serve it cold with a floating ice cube.

GARDEN COOKBOOK

Sarah Raven

Taking us through the year in six seasonal chunks of two months each, Sarah Raven highlights the best vegetables, fruit and herbs grown in the UK. For each one, there are hosts of simple yet inspiring recipes – over 450 in all – ranging from Warm broad bean salad to Green mayonnaise; Spinach and Gruyère tart to Mint and pea tip risotto; Sweet potato gratin to Celeriac soufflé; and Basil ice cream to Damson and almond pudding.



SERVES
6-8

YOU WILL NEED

4–5 red peppers (about 600g)
600g ripe tomatoes
1 red onion
3 garlic cloves
½ red chilli
1 tablespoon balsamic vinegar
3 tablespoons extra virgin olive oil
Handful of basil leaves
1.2 litres good chicken or vegetable stock
Salt and black pepper
200g Greek yoghurt, to serve

ROASTED PEPPER SOUP

METHOD

Preheat a medium (180°C/gas mark 4) oven. Quarter the peppers and deseed them. Halve the tomatoes and roughly chop the onion, garlic and chilli. Put all the vegetables and basil on a roasting tray, mix the vinegar and oil, and pour it over the vegetables, making sure everything is well coated.

Roast them in the preheated medium oven, turning them from time to time, for 45 minutes. Put everything through a mouli or sieve to get rid of the skins. If you pulse it in a food processor the flavour will be less mellow, as it will include that of the skins, but it will still be delicious.

Thin the soup with the stock to the consistency you want and season with salt and freshly milled pepper. Tip into a saucepan and warm for a couple of minutes, or put it in the fridge to cool. Before serving, add a dollop of Greek yoghurt.

SERVES
8-10

YOU WILL NEED

2 tablespoons strong instant coffee powder or granules

1 tablespoon boiling water

750ml double cream

1 tablespoon caster sugar

1 tablespoon coffee liqueur, such as Tia Maria or Kahlúa

3 pieces of stem ginger, thinly sliced, plus

1 tablespoon of the ginger syrup

For the meringues

6 egg whites

180g granulated sugar

180g caster sugar

Sunflower oil

For the sauce

3 tablespoons redcurrant jelly

275ml pomegranate juice (bought or fresh)

Juice of 1 lime

1 heaped tablespoon arrowroot

Seeds of 2 pomegranates

FROZEN MOCHA AND GINGER MERINGUE CAKE WITH POMEGRANATE SAUCE

METHOD

Preheat the oven to 110°C/gas mark ¼.

To make the meringues, whisk the egg whites until very stiff and dry, and slowly add the granulated sugar bit by bit, whisking until the egg white regains its former stiffness. Fold in the caster sugar with a large metal spoon. Spoon on to greaseproof paper rubbed with a trace of sunflower oil, or 'Lift-Off' paper, or a silicone mat, and bake in the preheated oven for about 3 hours until crisp. Remove and break the meringues into pieces.

Mix the instant coffee with the boiling water, then chill it well. Whip the cream to the soft-peak stage and mix in the sugar, Tia Maria or Kahlúa and half the coffee. Fold the mixture with the sliced ginger, ginger syrup and meringue pieces. Spoon the mixture into a deep (8cm) straight-sided round cake tin, 22cm in diameter, or a loaf tin, lined with non-stick paper, and marble the top with the remaining coffee. Freeze for at least 24 hours.

To make the sauce, melt the redcurrant jelly in the pomegranate juice over a low heat until dissolved. Add the lime juice. Bring to the boil, remove from the heat and add the arrowroot (which thickens clear), already mixed with a little cold water. Put back on the heat and simmer gently, while whisking, for a couple of minutes. Then let the sauce cool. When it's completely cold, add the pomegranate seeds.

Serve the cake straight from the freezer, drizzled with the sauce.

Sarah Raven's Garden Cookbook
(repackaged edition) out 31st August
(Hardback, £35).





I love this pudding and it's very easy to make. Serve it with pomegranates in winter and raspberries in summer. To save time, you can buy the meringues – it doesn't matter if they are powdery and dry.

THE PEPPERBOX INN

Country pub and restaurant, in the heart of Kent



Windmill Hill, Harrietsham, Kent ME17 1LP
www.thepepperboxinn.co.uk | Tel: 01622 842558



NOW OPERATING SELF
DRIVE BOAT HIRE



KENTISH LADY HIRE CRUISES

Scenic River Medway boat trips to Allington and Teston

Take in the sights and splendour of the Maidstone stretch of the River Medway from the comfort of the Kentish Lady River Boat. One hour trips or three hour cruises (with lunch/supper) available plus the opportunity to visit Allington castle possibly Kent's best kept secret, with its beautiful gardens, courtyards and Great Hall.

The Kentish Lady is also available for functions, including wedding receptions, birthdays or Champagne gatherings.


KENTISH LADY
RIVER CRUISES MAIDSTONE

Tel: 01622 753740 | Email: boattrips@kentishlady.co.uk | www.kentishlady.co.uk



SAM'S

FREE RANGE TURKEYS



Our turkeys are reared to the highest welfare standards, and are free to range the meadow and grassland which makes up nearly four acres of land.

Traditionally prepared by hand, having hung for a minimum of 14 days, your turkey is guaranteed to be of the highest quality and oven-ready for your special day. Our birds are available either whole or as a crown.

ORDER NOW

Tel: 07742 667491

Wey Street Farm

Faversham ME 13 9JB

email: info@samsturkeys.co.uk

www.samsturkeys.co.uk





OPENING TIMES
 Lunch: Tue - Sun 12 noon - 2.30pm
 Evenings: Tue - Mon 6pm - 9.30pm



Birdies is one of Whitstable's oldest family run restaurants, serving brilliant locally caught fresh fish features alongside great French classics.

41 Harbour Street, Whitstable CT5 1AH Tel: 01227 265337
www.birdiesrestaurant.co.uk

THE OLD NEPTUNE

Marine Terrace, Whitstable CT5 1EJ
 01227 272262 • www.thepubonthebeach.co.uk



LIVE MUSIC

Sun 10th September Deep River Blues
 Sun 17th September Barracouda
 Sun 24th September Squeeze Gut Alley
 Sun 1st October Ozzie & The Uglies
 Sun 8th October Brad Pitt & The Pirates
 Sun 15th October Blue Devils
 Sun 22nd October All Stars
 Sun 29th October Big Orange Head
 Sun 5th November Blue Devils
 Sun 12th November Bull Saxby & The Dan
 Sun 19th November Roger Hubbard
 Sun 26th November Alltones
 Sun 3rd December Kevin - TBC
 Sun 10th December Blue Devils
 Sun 17th December Big Orange Head

OPENING HOURS

Mon - Wed: 11.30 - 9.30pm Thurs - Sat: 11.30 - 11pm
 Sun: 12 noon - 9pm

Food served all day Saturday & Sunday from 12-4pm

Mon - Fri 12 noon - 4pm & 5pm - 8.15pm

Please refer the website as bands are subject to change. www.thepubonthebeach.co.uk

Dine with us at this summer!

www.thequeensinnhawkhurst.co.uk

01580 754233



With a choice of fine dining dishes or homemade pizzas to share, our beautiful unique menu incorporates excellent local produce showcased perfectly by our AA award-winning chefs.

Enjoy an intimate dinner in our restaurant or enjoy a drink in the ambience of our cosy bar!

On the first floor, our hotel boasts 8 luxurious bedrooms with a choice of standard, family and deluxe rooms available.

Whether it is a special night away for two or a family getaway for four, we have rooms for all occasions...

...and don't forget our generous continental and cooked breakfast to look forward to in the morning!



Our outside area is perfect for a glass of wine or cold pint of local beer or why not try one of our hand crafted cocktails!

Our restaurant is open 7 days a week, offering both inside and al fresco dining during the warmer months. Call us now to make your booking or stop in and say hello!

We can't wait to see you!

The Queen's Inn, Rye Road, Hawkhurst, Kent, TN18 4EY



**BUY
FRESH,
BUY
LOCAL**

— LOCAL — Farmers' markets



Support your local farmers' market

For more information and to find out what's in season visit www.kfma.org.uk.

SEPTEMBER

SATURDAY: 2nd

Chatham; Deal; Gravesend;
Groombridge; Penshurst;
Sevenoaks; Tunbridge Wells; Wye

SUNDAY: 3rd

Bearsted; Reuthe's (Sevenoaks);
Tunbridge Wells; Whitstable at
the Castle

TUESDAY: 5th, 12th, 19th & 26th

Capel-le-Ferne; Hildenborough

WEDNESDAY: 6th, 13th, 20th & 27th

Rye

THURSDAY: 7th, 14th, 21st & 28th

Hastings; Rolvenden; Shipbourne

SATURDAY: 9th

Bridge; Deal; Gravesend; Hythe;
Sevenoaks; Tunbridge Wells

SUNDAY: 10th

Herne Bay; Lenham; Reuthe's
(Sevenoaks) Tonbridge;
Tunbridge Wells

SATURDAY: 16th

Deal; Dover; Gravesend;
Sevenoaks; Tunbridge Wells;
Wadhurst; Wye

SUNDAY: 17th

Aylesford; Reuthe's (Sevenoaks);
Rochester; Staplehurst; Tunbridge
Wells; Watlingtonbury

SATURDAY: 23rd

Bridge; Deal; Gravesend; Hythe;
Knockholt; Sevenoaks;
Tunbridge Wells; Whitstable

SUNDAY: 24th

Reuthe's (Sevenoaks);
Tunbridge Wells

OCTOBER

SUNDAY: 1st

Bearsted; Reuthe's (Sevenoaks);
Tunbridge Wells; Whitstable at
the Castle

TUESDAY 3rd, 10th, 17th, 24th & 31st

Capel-le-Ferne; Hildenborough

WEDNESDAY: 4th, 11th, 18th & 25th

Rye

THURSDAY: 5th, 12th, 19th & 26th

Hastings; Rolvenden; Shipbourne

SATURDAY: 7th

Chatham; Deal; Gravesend;
Groombridge; Penshurst;
Sevenoaks; Tunbridge Wells; Wye

SUNDAY: 8th

Herne Bay; Lenham; Reuthe's
(Sevenoaks); Tonbridge;
Tunbridge Wells

SATURDAY: 14th

Bridge; Deal; Gravesend; Hythe;
Sevenoaks; Tunbridge Wells

SUNDAY: 15th

Aylesford; Reuthe's (Sevenoaks);
Rochester; Staplehurst; Tunbridge
Wells; Watlingtonbury

SATURDAY: 21st

Deal; Dover; Gravesend; Hythe;
Knockholt; Sevenoaks; Tunbridge
Wells; Whitstable

SUNDAY: 29th

Reuthe's (Sevenoaks);
Tunbridge Wells

SATURDAY: 28th

Chatham; Deal; Gravesend;
Groombridge; Penshurst;
Sevenoaks; Tunbridge Wells; Wye

NOVEMBER

WEDNESDAY: 1st, 8th, 15th, 22nd & 29th

Rye

THURSDAY: 2nd, 9th, 16th, 23rd & 30th

Hastings; Rolvenden;
Shipbourne

SATURDAY: 4th Chatham;
Deal; Gravesend; Groombridge;
Penshurst; Sevenoaks;
Tunbridge Wells; Wye

SUNDAY: 5th

Bearsted; Reuthe's (Sevenoaks);
Tunbridge Wells;
Whitstable at the Castle

SATURDAY: 11th

Bridge; Deal; Gravesend;
Hythe; Sevenoaks;
Tunbridge Wells

SUNDAY: 12th

Herne Bay; Lenham; Reuthe's
(Sevenoaks); Tonbridge;
Tunbridge Wells

SATURDAY: 18th

Deal; Dover; Gravesend;
Sevenoaks; Tunbridge Wells;
Wadhurst; Wye

SUNDAY: 19th

Aylesford; Reuthe's (Sevenoaks);
Rochester; Staplehurst;
Tunbridge Wells;
Watlingtonbury

SATURDAY: 26th

Bridge; Deal; Gravesend; Hythe;
Knockholt; Reuthe's (Sevenoaks);
Tunbridge Wells; Westerham;
Whitstable

SUNDAY: 27th

Cliftonville;
Tunbridge Wells



Micro eaterie & exclusive deli with inside & outside seating offering an extensive menu. Delicious homemade recipes, serving breakfast, brunch & lunch. Takeaway also available, alongside private catering events.

GILBERTS CAFE & DELI

19 Oxford Street, Whitstable CT5 1DB

Tel: 01227 273189



gilbertsofwhitstable



The BLACKSMITH'S Arms

17th century village pub, near the Pilgrims Way, set in rolling downland countryside. An inglenook log fire gives a warm welcome in winter. Good quality, locally sourced food served.

No children under 14 allowed in bar or restaurant.

No vegetarian options available.

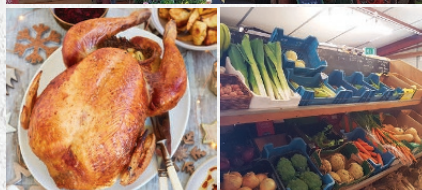
Wednesday - Saturday, 7pm - 11pm (must pre-book for food)
Sunday 4pm - 11pm. No lunches being served at present.

The Street, Wormshill, Sittingbourne ME9 0TU
Tel: 01622 884386

LOWER HARDRES FARM SHOP

- In-house butchery
- Free-range geese; chickens; local game, pork, beef and lamb
- Fresh local produce
- Fruit, vegetables and salad, sourced as locally as possible
- Cheese and deli products
- Stockist of The Chai Stop finest curries
- Seasoned logs, coal and kindling
- Skinners dog food; bird food
- Local wines and ciders

Christmas
orders being
taken



www.lowerhardresfarmshop.co.uk email: info@lowerhardresfarmshop.co.uk
Lower Hardres Farm, Lower Hardres, Canterbury CT4 5NU Tel: 01227 700947

Bull green Farm

QUALITY FARM PRODUCE

Bull Green,
Bethersden TN26 3LB
Tel: 01233 822463

Email: Shop@BullGreenFarm.co.uk

We are a family-run farm rearing Dexter cows, sheep and chickens. We believe animals should be able to roam free in the fields and enjoy fresh air and green grass.

We have a nicely stocked shop with fresh eggs daily, home grown veg, and a variety of local products such as Kentish honey, jams, and occasionally freshly baked cakes. We also have a freezer packed with locally made pies and tasty treats.



CHILHAM SHOP

Farm shop & plant centre

Canterbury Road, Chilham CT4 8DX
Tel: 01227 730348 | chilhamshop.co.uk
LOCAL DELIVERY SERVICE AVAILABLE

Serving Chilham and the surrounding villages for over 40 years with a wide range of fresh, fruit, vegetables, cut flowers, garden plants as well as a good selection of general groceries, dairy, bakery, frozen foods and much more.

Mon to Sat: 8:30am to 6pm Sun: 9am to 5pm. We also run Chilham Post Office.



THE PERFECT MATCH

Our wine expert suggests some tips for food and wine pairing.

Rowena Hawtin DipWset | www.discoverthevine.co.uk

Although food and wine pairing is an art that can take years to perfect, there are a few basic tips that will help you get it right every time whether it's a mid-week meal at home or a special dinner party. The rule of thumb is about balance – you want to taste the food and the wine – so the key is not to let one overpower the other.

The Do's WEIGHT

Try to match the weight of the food with the weight of the wine – richer, fattier food needs a full bodied wine to balance with all the elements, but it does not necessarily have to be red – a full bodied white is better than a lighter styled red for these kinds of dishes. Examples of full bodied reds include Malbec, Shiraz and Zinfandel and whites include oaked

Chardonnay and Rhone whites. On the other hand, food which is lower in fat such as pasta without sauce, poultry and lean meat are better paired with lighter styled wines such as Beaujolais and Pinot Noir for red and Chenin Blanc (from the Loire in Northern France), Vinho Verde and Gavi for white.

FLAVOUR INTENSITY

This is not the same thing as weight – flavour intensity in a wine refers to the depth of the aromas and flavours in the wine that needs to be matched with the same level of intensity in the food otherwise one will overpower the other. So a light intensity wine like, for example, a Pinot Grigio or a Cabernet Franc would be perfect for simple dishes such as noodles and white fish without a heavy sauce, but would be lost on a dish such as lamb stew as the flavour intensity is not balanced.



ACIDITY

All wines have acidity otherwise the wine would be dull and flat, but some wines are naturally much higher in acidity than others and the food needs to be of a similar level of acidity to avoid that tart, unpleasant taste on the palate. Wines such as Sauvignon Blanc and many of the Italian whites are naturally very high in acidity, which is why they are perfect partners for fish, seafood, olives and feta cheese. Red wine generally has lower acidity than white wine, but Sangiovese from Tuscany in Italy is particularly high in acidity for a red wine, which is one of the reasons why it goes so well with tomato based dishes which are very high in acid. Red wines which have lower acidity include Merlot, Grenache and Malbec and pair well with vegan and vegetarian food, but also chicken based dishes and lean meat.

TANNINS AND FAT

Tannins are found in the skin and seeds of grapes and although they are found in white grapes, they are far more dominant in black grapes. Tannins need to be ripe when the grapes are picked as unripe tannins in wine can leave your mouth feeling dry, especially around the teeth (a bit like drinking black tea) which is not pleasant at all. However, tannins in wine do complement fatty food well as they help to absorb the fat and highlight the flavour of the food. Grape varieties vary with the amount of tannins that are naturally in the skin – Gamay for example (the grape that makes Beaujolais) is low in tannins and therefore a meal lower in fat would be a good pairing, but on the other hand, Cabernet Sauvignon or Nebbiolo (the grape for Barolo) are very high in tannins and would go well with dishes such as pork belly or even a rich, creamy pasta.

SPICY FOODS AND SWEETER WINES

Spicy food such as Thai or Indian curries pair very well with wines that are slightly sweet or off dry as the sweetness coats your tongue and counteracts the heat of the food. Examples include a medium sweet Reisling, Gewurztraminer and off dry styles of Pinot Gris – you want to enjoy the spices, but not set your mouth on fire with wine that competes for flavour. If you like to drink red with spicy food – try to stick to a lower alcohol wine – no higher than 12% or a rose such as white zinfandel would work very well as well.

MATCH THE WINE WITH FOOD FROM THE SAME REGION

Many countries, especially in Europe have been producing food and wine in their local area for centuries and as a result, the food from a particular region will usually pair well with the wine produced. Think about Sancerre in the Loire valley in Northern France made from Sauvignon Blanc; this wine pairs beautifully with the local goat's cheese because the acidity in the wine stands up to the acidity in the cheese. Chianti from Tuscany is ideal for all those Italian pasta based dishes such as spaghetti Bolognese because of the high acidity in the food and the wine. Gruner Veltliner from Austria is perfect with sausages and sauerkraut as well as pork schnitzel – what grows together goes together!

The Don'ts

SWEETNESS AND DESSERTS

Don't have a dessert that is sweeter than the wine – your wine will taste sharp, bitter or even sour. Dessert wines are made to pair with sweet desserts – some are sweeter than others. But a Sauternes, a famous sweet wine from

Bordeaux, will go with most rich desserts and it also goes very well with a blue cheese too as salty and sweet are good partners. It is also very common to serve sparkling wine or Champagne at celebrations at the end of the meal and often with cake; our palate is already primed by sweetness and most sparkling wine is very dry and it will actually just taste quite tart, sharp and dry. Either have the Champagne toast earlier in the celebration or if you want to toast at the end - have a sweeter sparkling wine.

HIGH ALCOHOL WINE WITH SPICY FOOD

This is a no – no! Avoid wines high in alcohol with spicy food – they will fight together in your mouth and you won't appreciate the spices in the food and neither will you be able to taste the wine. Whether you choose white or red keep the alcohol content to 12% or under such as Vinho Verde, Bacchus, a medium sweet Reisling from Germany or a Chenin Blanc from the Loire valley.

TANNIC WINE AND FOODS HIGH IN SALT

Rough tannins in a wine can be magnified by salt – if you are drinking a wine that has high tannins - avoid foods high in salt such as nuts, smoked and cured meat, bacon, sausages, sardines, burritos and pizza. Foods high in salt go better with reds such as Beaujolais, Merlot or most white wines as the tannins are much lower than for example a Syrah or Cabernet Sauvignon.

But most importantly – enjoy the food and wine and that you like and you can't go wrong.



MACKNADE

EXPLORE OUR NEW HAMPER RANGE

Find the perfect gift for the foodie in your life



MACKNADE

SELLING ROAD . FAVERSHAM
KENT . ME13 8XF
WWW.MACKNADE.COM



SCAN ME

Scan the QR code to view the full
range or visit MACKNADE.COM

CONSERVATION NEWS

PERIOD HOMES • RENOVATION • INTERIORS • GARDENS • FOOD

CONSERVATION NEWS

West Kent & The Weald

Spring 2023 • Complimentary

A warm welcome

MAKING THE MOST OF YOUR HALLWAY



Creating a
BOOT ROOM

PERIOD HOMES • RENOVATION • INTERIORS • GARDENS • FOOD

CONSERVATION NEWS

Kent

Spring 2023 • Complimentary

Creating a
BOOT ROOM



A warm welcome
MAKING THE MOST OF YOUR HALLWAY

PERIOD HOMES • RENOVATION • INTERIORS • GARDENS • FOOD

CONSERVATION NEWS

West Kent & The Weald

Summer 2023 • Complimentary

GORGEOUS
Garden buildings

Bespoke design
YOUR UNIQUE HOME



PERIOD HOMES • RENOVATION • INTERIORS • GARDENS • FOOD

CONSERVATION NEWS

Kent

Winter 2022 • Complimentary

Choosing
a bath tub
for your period home



Creating a
FOCAL POINT

PERIOD HOMES • RENOVATION • INTERIORS • GARDENS • FOOD

NEVER MISS A COPY

Take out a subscription and we'll deliver every issue direct to your door.

Visit [conservationnews.co.uk](https://www.conservationnews.co.uk)

A stylish & modern kitchen designed to suit you



Hogwood
—House
BESPOKE KITCHEN DESIGN

6c Strand Street Sandwich Kent CT13 9DZ | 01304 784378

Email: info@hogwoodhouse.co.uk | www.hogwoodhouse.co.uk