

# CONSERVATION NEWS

Kent

Spring 2024 • Complimentary



PERIOD HOMES • RENOVATION • INTERIORS • GARDENS • FOOD & DRINK



# Ashford & Cranbrook Roofing<sup>TM</sup>

— Experts in heritage roofing —



Proud to supply authentic Kent Peg tiles through our partner Spicer Tiles

[www.cranbrookroofing.co.uk](http://www.cranbrookroofing.co.uk)



**Tel: 01580 242925**

SPRING 2024

# Welcome



[lights4fun.co.uk](http://lights4fun.co.uk)



*Caption*

Welcome to the latest edition of Conservation News. We're very excited to see the re-emergence of those beautiful blue skies after the dull greys of winter, and we're even happy to put up with a few spring showers if it means we can watch the crocus, daffodils and blossoms appear!

In this edition of the magazine we're focussing a little more on the great outdoors (well the outside of your home anyway!) with features on front doors and porches, gates, and outdoor dining areas. However, we do know how unpredictable the weather can be at this time of year, so if you're inclined to hide away for a bit longer then check out our feature on media walls and how they can turn your living room into an artistic and entertainment paradise.

We've also got all our usual features, some great reviews of local businesses and artisans, and a collection of the very best local businesses for you to peruse.

So join us in getting excited about spring, and let Conservation News help you welcome in the season.

*Dawn*



**CONSERVATION NEWS**  
[conservationnews.co.uk](http://conservationnews.co.uk)

*Publisher*  
Conservation News

*Contributors*  
Rowena Hawtin  
Susan Hubbard  
Liz Norton  
Louise Tomlin  
Sarah @The Garden Creative

Cover:  
Dobbies  
*Design*  
Lynn Fasulo

*Editor/Sales Manager*  
Dawn Long  
Tel: 07725 732535  
[dawn@conservationnews.co.uk](mailto:dawn@conservationnews.co.uk)  
© Conservation News 2024



If you receive your copy of Conservation News by Royal Mail and wish to opt out of our mailing, please send an email to [dawn@conservationnews.co.uk](mailto:dawn@conservationnews.co.uk)

All rights reserved.  
Reproduction of any part of this magazine is not permitted without written permission of the publisher.  
The publisher accepts no responsibility of any loss or damage in respect of any product or service that may be advertised.



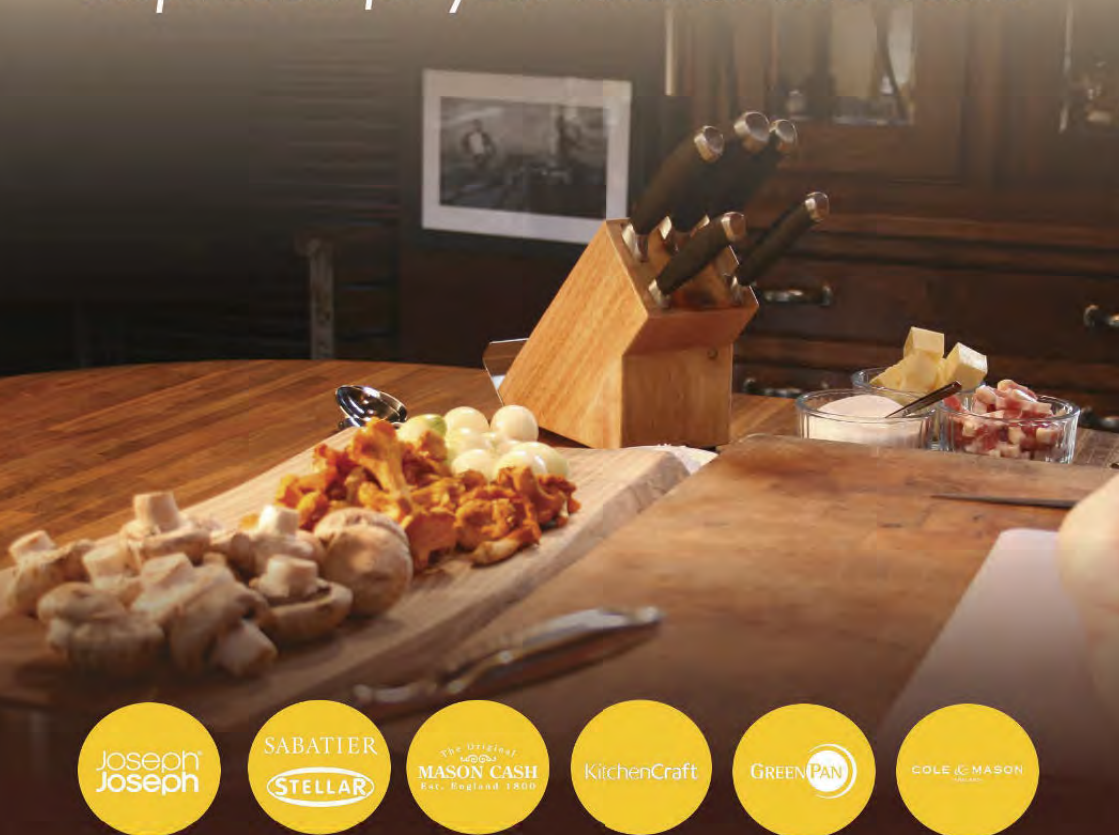


# *Copperfields*

OF WHITSTABLE

Cookshop & Homewares Since 1956

## *Inspiration for your kitchen and home*



Cookware • Homeware • Gifts • Bakeware • Furniture • Electrical • Cards

[shop@copperfieldsofwhitstable.co.uk](mailto:shop@copperfieldsofwhitstable.co.uk) • [www.copperfieldsofwhitstable.co.uk](http://www.copperfieldsofwhitstable.co.uk)

93 - 95 High Street • Whitstable • Kent • CT5 1AY • Tel: 01227 273519

## OPEN 7 DAYS A WEEK



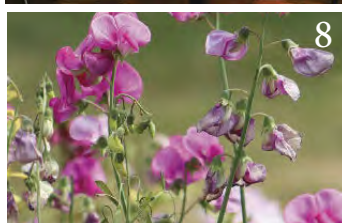


SPRING 2024

# Contents



- 8 **Spring gardening**  
What to do in the garden now
- 19 **Alfresco living**  
The art of design: your dream outdoor kitchen
- 29 **Kitchen gardens**  
How to create yours
- 35 **The gateway to your perfect home**  
Choosing the perfect gate
- 42 **Doors, porches and canopies**  
Transform your living space
- 63 **Upscale vanity units**  
...for period homes
- 71 **The rise of media walls**  
Transforming homes into entertainment havens
- 76 **Artist profile**  
We talk to Charlie Wallace from Magical Miniatures
- 83 **Listed buildings**  
What can you alter without permission?
- 108 **Spring recipes**  
Two recipes from Kitchen Sanctuary by Nicky Corbishley
- 114 **Farmers' markets**  
Shop fresh and local this spring
- 119 **Rowena's wine column**  
The Tudor Peacock, Chilham



# ALAN HOPKINS

Tel: 01227 731302 or 07961 985538  
[www.alanhopkinstreesurgeon.co.uk](http://www.alanhopkinstreesurgeon.co.uk)

Underdown Nursery, Mystole Lane,  
Chartham CT4 7BX



ALL ASPECTS OF TREWORK

NPTC CERTIFIED

- Felling
- Thinning
- Pollarding
- Deadwood
- Site & garden clearance
- Stump grinding
- Wood chipping
- Call today for a competitive quote

Constructed and resurfaced  
in Kent, Sussex and Surrey



Please call  
Martin for free  
advice and  
quotations

Tel: 01424  
892265  
07831 643835

[www.martingurr.co.uk](http://www.martingurr.co.uk)







*InThe*  
**Country**

## COUNTRY CLOTHING AND ACCESSORIES



Our store is open 5 days a week, visit us at

**IN THE COUNTRY**

ASHFORD ROAD, BADLESMERE KENT ME13 0NX

Wednesday - Sunday 10am - 4pm

**01233 742700**

**[inthecountrykent.co.uk](http://inthecountrykent.co.uk) [www.inthecountrykent.co.uk](http://www.inthecountrykent.co.uk)**



## The delights of wild garlic

When picking wild garlic, try to pick the leaves (the bulbs have no culinary purpose). After you've brought your freshly picked wild garlic home give it a quick wash, pat the leaves dry and then refrigerate in a sealed bag. Use within a couple of days. The early shoots work as salad leaves; the stem can be used like a thick chive; the flowers make a beautiful garnish and the seed pods can be added to a salad.



## PARSNIP PLANNING

A fantastic winter veg, roast dinners wouldn't be the same without parsnips. March – April is the best time to sow parsnips. You need deep, free-draining soil, preferably sandy. If your soil isn't suitable, consider growing in raised beds. You can start to harvest roots as soon as they reach 2cm across, from July/August onwards, but leave the majority for winter.

# Garden notes

Whether you're a seasoned pro or green-fingered novice, prepping your garden for spring is a pretty joyous experience. Between March and April is the perfect time to begin spring gardening and to slowly awaken your plot from its winter slumber.



## Delphiniums at Godinton

8th - 23rd June: A celebration of Godinton's magnificent Delphinium collection in the Walled Garden. Members of the Delphinium Society will be on hand to offer expert advice and have plants for sale between 1pm and 4pm. Entry tickets are priced at £8 for adults (under 16s go free) [godintonhouse.co.uk](http://godintonhouse.co.uk)

## KENT GARDEN SHOW

The Kent Garden Show will take place on Saturday, Sunday & Bank holiday Monday 25th, 26th & 27th May 2024. The show will feature around 300 exhibitors. Main features will include the floral marquees with their stunning displays, including medal winners from Chelsea. As well as the numerous nurseries in attendance there will be exhibitors selling garden furniture, water features, garden sheds and buildings, tools, sculptures, pots, bbqs, metalwork and more. ([kentgardenshow.com](http://kentgardenshow.com))





## What to plant now

Annual gazanias can be sown from seed in March in pots or trays filled up with seed compost. Since the seeds require heat to germinate, you will need to place them either in a heated propagator or wrap the pots in clear plastic bags (seated on a warm windowsill). Once the seedlings have grown big enough to handle, you can transplant them into individual pots and leave them to harden off outdoors during the warmer days. Planting them outside should be done after the last frosts.

## Sweet perfection

Few annual flowers have the lasting appeal of sweet peas. They make great flowers for gardens and bouquets. Sweet peas are happiest with their heads in the sun and their roots in deep cool, moist soil. When possible plant low-growing annuals in front of them to shade their roots. Prior to planting dig a nice deep compost trench of about 4 inches in depth. Soak the seeds in water for 24 hours, then nick them with a nail file before planting to speed sprouting. Once out in the open they will need support. Feed and cut them almost every day in May and June.



## What to do in the garden now

- Clear up flower beds and borders
- Clean your greenhouse
- Sow seeds that need a longer season
- Tie your trees
- Plant primulas, polyanthus, pansies or dwarf irises and mini daffs – they are all hard enough to be outdoors now
- Keep on top of weeds while the beds are still empty
- Plant shrubs and perennials
- Cut your lawn – put the mower on a high cut for the first few times, gradually lowering the height as the grass grows more
- Don't be tempted to buy summer bedding just yet, as a late frost could kill them. Wait to give your plants a better chance.

## Divide & rule

Now is the perfect time to divide water lilies – something you need to do every few years to maintain their vigour. Remove the tubers from the basket and cut them into 8-10cm lengths, making sure each section has at least one bud. Repot in aquatic compost and you'll soon have new plants.





## Old English Tools

**KENT DOWNS WOOD FAIR**

AN EVENT FOR ALL THE FAMILY  
Classic and vintage machinery, woodland  
crafts, chainsaw carving, axe throwing.

Pitches available – see website for details

**July 13th & 14th 2024, 10am – 5pm**

In the grounds of the Bredgar & Wormshill  
Light Railway

The Warren, Swanton Street,  
Sittingbourne, ME9 8AT

### TICKETS

Adults £10 – children under 16 go free

All tickets are available at the gate.

Enquiries: [info@kentdownswoodfair.com](mailto:info@kentdownswoodfair.com)

Visit: [www.kentdownswoodfair.com](http://www.kentdownswoodfair.com)



## Old English Tools



Bench planes, chisels, felling axes, bill hooks, froes, draw  
shaves, side axes, early garden tools, blacksmith tools,  
pine boxes. Cast iron log burners and fire grates.

Tools old and new bought for cash. Workshops cleared.

Faversham Standard Quay, ME13 7BS

BLACKSMITHS' ANVILS WANTED

Call Phil on 07796 343722 / 07850 292523

[www.countryclobberltd.co.uk](http://www.countryclobberltd.co.uk)





Driveways & Patios Ltd are a well established, professional company with a great reputation and have over 28 years experience.

We cover Herne Bay, Whitstable, Canterbury, Faversham, Sittingbourne, Thanet and all surrounding areas. We provide a first-class service, carrying out works to the very highest standard in a professional manner.



## Kent's leading specialists in DRIVEWAYS, PATIOS & FENCING

Est. 1987



We offer FREE,  
non-obligatory quotes  
and estimates.

If you are interested in  
any of our services, please  
contact us for friendly  
professional advice.

Call:

**07770 964939**



- Driveways
- Patios
- Block paving
- Fencing
- Turfing
- Decking
- Garden Clearance
- Building & maintenance work



**[drivewayexperts.co.uk](http://drivewayexperts.co.uk)**



# Relax in style with our beautiful heartwood teak furniture



Visit our showroom to experience the real comfort of our luxurious teak furniture for yourself. Our beautiful chairs, tables and benches are perfect for any garden or patio setting and with minimal maintenance, you really can sit back and enjoy your garden in style. Our designs are made from A-Grade sustainable heartwood plantation teak and use stronger, thicker wood that will withstand the British weather for many years to come.

Showroom visits are by appointment only.  
Call Steve on 07973 791620 or email [steve@kentgardenfurniture.co.uk](mailto:steve@kentgardenfurniture.co.uk) to book.

## Kent Garden Furniture

01843 594454 or 07973 791620

[www.kentgardenfurniture.co.uk](http://www.kentgardenfurniture.co.uk)

1 Nicholas Drive, Cliffsend, Ramsgate, Kent CT12 5JS



# RELAX IN STYLE AND **'TEAK' IT EASY...**

If you are looking for classic, comfortable premium quality garden furniture, that's fantastic value and that will stay looking good for years and years, we've found the solution.

**A**s the daylight hours increase we can all breathe a sigh of relief as we look towards the spring and brighter warmer days, quite naturally our thoughts turn to spending more quality time in the garden. But how are things looking out there after the harsh winter weather that can cause havoc to plants, trees and garden furniture alike? Hopefully not

too much damage has been done to the former and the greenery will recover and grow back. But what of the latter, has your current garden dining set or bench gone well beyond their best before date? Will the 'spring spruce up' just not cut the mustard this year? It could be time to face up to reality and accept that what was once lovely has reached the point of no return, and it's time to start afresh.



Instead of looking for your new garden furniture from one of the many big brand garden centre outlets that have a large choice of mass produced products of varying quality and value, how about considering a supplier that is closer to home. One that can offer good old fashioned personal service, premium quality, sustainably sourced garden furniture, fast and efficient delivery and beautiful, classic timeless designs made from stronger and thicker wood, that will withstand the harshest winter weather and will stay looking good for many years to come.

That's a pretty tall order, but we've found a niche company that ticks all those boxes. Kent Garden Furniture is a family run business based in Ramsgate, Kent. Steve Major and his team have been supplying solid teak garden and patio furniture to discerning customers in the Kent and Sussex areas in search of high quality at refreshingly affordable prices since 1997.

The name 'teak', may well ring warning bells for some people because of sustainability issues around buying tropical hardwood due to the indiscriminate logging of the rainforest, and quite rightly so. However, the teak used in Kent Garden Furniture's beautiful products only ever comes from Indonesia, where a strict policy of sustainable forestry is enforced. The commercial plantations in Indonesia producing teak are replanted and managed to produce sustainable supplies.

Kent Garden Furniture's range is manufactured from high quality, kiln dried grade-A teak, which is naturally rich in oils that help protect it from damage caused by weather, and make it highly resistant to warping and rotting. Unlike many softwoods that are used to produce garden furniture sold in this country, teak products will last for many years without



THE COMPANY'S RANGE OF TABLES, CHAIRS AND BENCHES ARE CUSTOM-MADE IN INDONESIA, AND FEATURE CLASSIC DESIGNS THAT WILL ADD GRACE AND STYLE TO ANY GARDEN.

any special treatment or preservatives making it almost maintenance free. As it weathers, the teak will turn a beautiful silvery colour after a year or so outside. All that's required is to keep it clean and free of dust, and you can decide to apply a very sparing amount of oil, should that be your personal preference. This won't extend the life of the wood, as it's purely for cosmetic purposes.

The company's range of tables, chairs and benches are custom-made in Indonesia, and feature classic designs that will add grace and style to any garden. The pieces have been designed with thicker and stronger wood, enhancing their durability and giving them a luxurious and lasting appeal. By importing direct from Indonesia and by keeping administration overheads to a minimum Kent Garden Furniture is able to offer solid teak garden furniture of high quality but at very affordable prices. However, lower prices do not mean that quality has been compromised – every piece is individually inspected before being sold.

The range includes standard dining chairs to match the tables on offer, with variations like high back carvers, a companion set, a Canterbury rocking chair and a wonderful Adirondak style lounger with footstool.

Tables come in varying sizes and shapes to fit any need, from a beautiful 12 seat, rectangular dining table through to smaller square or circular



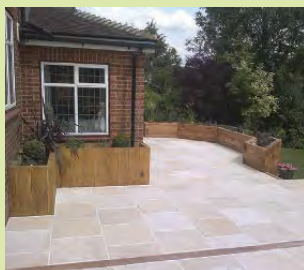
versions, right down to handy occasional folding coffee tables or mini-wedge shaped tables.

There are five beautifully made benches in the range; the Wimbledon and Classic are simply stylish with traditional lines, the Bexley and the Contemporary benches have a more modern twist, and the luxurious Lutyens bench, that encapsulates the exquisite elegance of this timeless design classic. They are all

designed for ultimate relaxation and enjoyable comfortable sitting that will make the most of any situation in your garden, be it a shady spot for leisurely contemplation or an inviting focal point in a sunny corner or a welcoming haven under an arbour or pergola.

**Call today make a one to one appointment to visit the showroom on 01843 594454 or 07973 791620 or go to [kentgardenfurniture.co.uk](http://kentgardenfurniture.co.uk)**





## EVERGREEN LANDSCAPING

All aspects of landscaping work undertaken:

- Decking, patios, fencing
- Driveways, block paving, brick and stone work
- Ponds, planting and more.

*All finished to a high standard at competitive prices.*

Phone Lee 07799103112 / 01227 264482

For a free quotation or visit [www.evergreengardenskent.co.uk](http://www.evergreengardenskent.co.uk)

## BJ CESSPOOL SERVICES LTD



If you want someone who is reliable, careful and efficient to empty your cesspool, septic tank or treatment plant please call Barry or Fiona Spicer.

- Emergency blockages
- Septic tank clearance
- Cesspool maintenance
- Treatment plant maintenance

We can help you with your home, rental properties, caravan parks, hotels and in fact any property that is not on main drains.

A jetting service can also be provided.

**Tel 07796 282864 or 01233 624017**

**[www.bjcesspool.co.uk](http://www.bjcesspool.co.uk)**





# **LIFETIME DRIVEWAYS**

## **AWARD WINNING BLOCK PAVING AND RESIN DRIVEWAYS**

### **Drives, Patios and Paths**

### **0% DEPOSIT - PAYMENT ON COMPLETION**

**BLOCK PAVING - CONCRETE - TARMAC**

**SHINGLE - PATIOS - SLABBING**

**CRAZY PAVING - FENCING**

**NATURAL STONE - BRICKWORK**

**TURF & TOPSOIL**

**ARTIFICIAL GRASS - RESIN BOUND**

**01227 362082 Mob: 07731 316879**

**[www.lifetimedriveways.co.uk](http://www.lifetimedriveways.co.uk)**



**Marshall's**

*Creating Better Landscapes*



**direct line**





THE GARDEN  
CREATIVE

**BESPOKE GARDEN DESIGN**

07725055701

sarah@thegardencreative.com

www.thegardencreative.com



## LANDSCAPING SERVICES

We specialise in design and installation and are happy to be able to offer the following services:

**COMPLETE GARDEN DESIGN:** Patios and decking, gazebos and water features, turfing, fencing, electric gates and astroturf.

**GROUNDWORK:** All demolition work, footings, oversights, extensions, drop kerbs, drainage and civil engineering

## CONTACT US

Tel: 01227 750191

Mobile: 07759 546838

email: [ablelandscapes@btinternet.com](mailto:ablelandscapes@btinternet.com)

[www.ablelandscapes.com](http://www.ablelandscapes.com)



**ABLE**  
LANDSCAPES





# THERE'S A NEW STYLE KITCHEN GARDEN IN TOWN

sarah @ TheGardenCreative

Photographs by Jacqui Hurst @jacqui.hurst.photography

It's wonderful to grow your own fruit, vegetables and herbs in a traditional potager or kitchen garden but many urban gardens don't readily offer the necessary space required and many of us wish to prioritise socialising, entertaining and relaxation over cultivation.



Even if we have a larger garden we may wish to have an outdoor kitchen as part of our socialising space. Like the kitchen in your house, it creates a central zone for gathering and a warm and relaxing space to spend time in.

There are many options for creating an outdoor kitchen from something quite simple using a freestanding BBQ with a built-in worktop to much more extravagant designs with sink, gas grills, pizza ovens and plenty of storage.

I was fortunate to receive a brief from a professional chef who wanted an outdoor kitchen as part of a new garden design. Being a chef he had a clear idea of how the kitchen

should be, and it was a pleasure to learn about how the kitchen would be best designed to create the perfect cooking area to create some fantastic feasts for friends and family in the great outdoors.

The house was part of a terrace so the garden was typically long and narrow with back access. It angled sharply away from the house though and narrowed even further towards the end. The original layout only accentuated this with long beds following the fence line either side and a skinny lawn in the middle. A new approach was needed, and my clients had lots of ideas as well as a beautifully stylish house that they had spent the last few years lovingly restoring, so a new garden was next on the cards.



Taking an angled line across the garden helped to extend the eye outwards, making the space feel wider and this helped also to bring the garden back into focus and minimise the 'kick out' that had seemed very obvious before. Following this line allowed us to have triangular raised beds with planks of paving through decorative shingle. Away went the lawn in favour of prairie planting with ornamental grasses and perennials.

The whole space needed to feel like a place for socialising and entertaining but also allow for solace, quiet contemplation and relaxation. By building in seating at either end of the garden we could create an area near to the outdoor kitchen with raised seating, a breakfast bar and dining table on the deck, while at the other end of the garden a lounge area was created, with matching seating but set lower with a low coffee table creating a quieter place to catch the last of the evening sun with a nice cold drink on a summer's night.

By keeping the colour palette to just 3 or 4 colours and choosing evergreen planting with pops of colour coming through seasonally, the all important aspect of harmony is achieved making the garden a place you want to spend time in throughout the year.

The resulting garden has been a triumph for the whole family to enjoy and complements the house beautifully. It shows that having a well-designed garden gives another whole space for the warmer months of the year and is generally a much cheaper alternative to a building extension. It provides all-year-round interest and is a place that is loved by the clients as well as the visiting wildlife. A stylish kitchen garden for the 21st century.

THERE ARE MANY OPTIONS FOR CREATING AN OUTDOOR KITCHEN FROM SOMETHING QUITE SIMPLE USING A FREESTANDING BBQ WITH A BUILT-IN WORKTOP TO MUCH MORE EXTRAVAGANT DESIGNS...





## TIPS FOR CREATING THE PERFECT OUTDOOR KITCHEN GARDEN

Seating is a must – think about the seat backs and the cushions, it has to be comfy. How much cooking do you want to do? You could splash out on a pizza oven, they are great for roasting meats too, or are you more of a BBQ chef, in which case a worktop built up to your freestanding grill may create the perfect kitchen for you.

Shelves and storage – think about what you'll need to hand. You'll certainly need fuel for the fire, be it timber or bags of charcoal, building in some cupboards or shelves allows space for this as well as for condiments, crockery, cutlery and potted herbs, and stacked logs look great as a feature at any time. Site it somewhere near the house where it's easy to get to. The last thing you want to be doing is trekking to the end of the garden only to have forgotten something and having to go back inside!

Lighting – you'll most probably be cooking

into the evening so lighting will be important.

If you don't already have electricity in the garden, consider solar lights that will come on automatically as it gets dark. There are a number of LED lights available now for gardens that can be plugged into outdoor sockets and controlled by apps. They offer many options and are a good alternative to wired electrics fitted by an electrician.

Water – would you like a sink? It's handy for rinsing and cleaning up afterwards. The overflow can water the plants too, there's no need for a connected waste pipe.

Remember to cover your outdoor kitchen in the winter to protect your appliances from heavy rain and freezing temperatures.

Think about plants that you will use in cooking and plant these close to your kitchen; herbs are easy to grow and can be incorporated into flower beds alongside more decorative plants or placed in pots on the kitchen worktop.





If you would like to discuss a garden design,  
please get in touch with Sarah on 07725055701  
email: [sarah@thegardencreative.com](mailto:sarah@thegardencreative.com) and  
have a look at this and other projects on  
[thegardencreative.com](http://thegardencreative.com)  
Garden built by Quest Landscapes

## Spring project inspiration at Newnham Court Shopping Village

**L**et's start with your garden, patio or balcony, get ready in style with an extensive range of gardening essentials at Notcutts. From flowers, seeds, bulbs, shrubs, plants and trees to lawn care, they have everything you need. Whether you're a seasoned gardener or just starting out, knowledgeable staff are on hand to offer expert advice and guidance.

Is your pond in need of some tender loving care? Look no further than the dedicated staff at Maidenhead Aquatics, where you'll find all you need to keep your pond pristine and your fish happy. From water treatments, pumps and liners to plants. There's a huge selection of fish too.

Dreaming of a beautiful conservatory or orangery? Visit the show centres and gain expert advice with quality installations you can trust from Fineline Windows, Doors and Conservatories.

Explore the range of garden buildings & offices at Johnsons large show centre. And for the ultimate in luxury, why not indulge in a hot tub too?! Turn your garden into a private paradise and unwind in style. For decking materials and fencing see Timberjacks Fencing. Their installation services help you create a stunning outdoor retreat that's perfect for relaxing and entertaining.

Transform your kitchen or bathroom today! Visit the Granite Transformations showroom inside the village for worktops that are made to perfectly cover your existing worktop with no disruption or demolition.

Assisted Bathing & Disabled Bathroom Experts AHM Installations are the specialists in accessible bathrooms, with expert advice and design detail for stylish, accessible bathrooms.

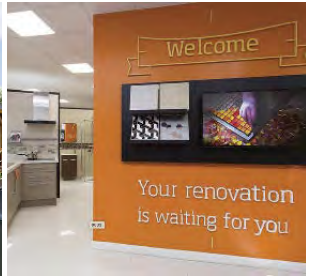
Charterwood mobility offer a large selection of scooters and powerchairs, wheelchairs and walking aids, shoes & slippers. Come and try

the large selection of rise and recline chairs, with caring, knowledgeable staff to assist you.

**Find us just off the M20, J7  
at Maidstone and  
let the transformation begin!  
There's plenty of FREE  
parking too!**







## STORE DIRECTORY

AHM Installations	01622 738204
Bricks Coffee House	01622 631022
The Butcher of Brogdale	
Charterwood Mobility	01622 631511
Coffee Corner Restaurant	01622 736744
Cotswold Outdoor/ Runners Need	01622 738381
Edinburgh Woollen Mill	01622 738371
FineLine Windows, Doors & Conservatories	01622 631613
Gymfinity & Nursery	01622 291410
Johnsons Garden Buildings	01622 730777
Klass Collection	01622 730815
Maidenhead Aquatics	01622 739210

Notcutts Garden Centre	01622 739944
Notcutts Home & Gift Shop	01622 739944
Pavers	01622 735922
Pennies Day Nursery	01622 737733
Pure Beauty Essentials	01622 738774
Pure Hairdressing	01622 632642
Shopmobility	01622 631511
Simmonds Schoolwear & Sportswear	01892 837202
Sussex Beds	01622 630576
Timberjacks Fencing	01622 730777
Trend Transformations	01622 469541



*Enhance your outdoor living space*



Verandas • Glass Rooms • Awnings • Pergolas  
Carports • Solar Garage Doors & Shutters



SBI Ltd 0800 0742 721 [sbiproducts.co.uk](http://sbiproducts.co.uk)

# WAREHAMS

Antique Garden Ornament Gustavian Furniture

68 Oxford Street - Whitstable CT5 1DG  
Mobile : 07831 210139  
[www.warehams.com](http://www.warehams.com)

## SOUTHGATE ELECTRICAL CO. LTD

*The Best Electrical Services*

*Offering a full range of electrical services  
from design to installation*

- External Electrics
- New Builds
- Access and Security
- Space Heating
- Electric Showers
- Fire Alarms
- Landlord Certificates



T: 01227 712790 / 07889 895394  
[www.electricians-canterbury.com](http://www.electricians-canterbury.com)



# CORE

Waste Management

- Rubbish Clearances
- Bulky Waste Removal
- Garden Waste
- Builders Waste
- House Clearances
- Bins Emptied
- Man & Van Load & Go
- Cheaper Than A Skip



**Fully Licensed & Insured**

**Contact Our Team**

**01227 940767 / 07362 269326**



## SCRAP METAL RECYCLING

Polite & friendly service

Fully licensed

Clearance of all metals

Unfortunately we cannot take fridges or freezers

**Jason 07840 081990**

7 days a week



# Oak firewood based in Kent

We have been producing oak firewood for over 6 decades. We have a comprehensive range of options for all domestic and commercial heating needs. We supply logs, offcuts and kindling for a verity of applications including open fires, wood burners, boilers and inglenook fireplaces.



As our range all comes as standard in kiln-dried, you can be sure that you are getting the most out of the wood you're burning:

- 4m2 & 2m2 loads
- Cleaner burn
- Better for the environment
- Longer/hotter burn time

Call us on 01233 732179 send us a message or feel free to email us or visit [www.orlestoneoak.co.uk](http://www.orlestoneoak.co.uk)



ORLESTONE OAK

KENT · ENGLAND



**You feed the family,  
we'll feed the lawn**

We provide a premium lawn care experience.

We seed them, feed them, even control the weeds. So, you don't have to.

For a FREE lawn analysis visit [greenthumb.co.uk](http://greenthumb.co.uk) or contact our local team.

**Canterbury branch** Call 01227 652351 Email [canterbury@greenthumb.co.uk](mailto:canterbury@greenthumb.co.uk)

Coming soon on

**itv1**

*Alan Titchmarsh's*  
**GARDENING CLUB**

Brought to you by

**GreenThumb**  
LAWN TREATMENT SERVICE

# THE PATIO > WAREHOUSE



UNIT 3, ASHMILL BUSINESS PARK, ASHFORD RD, LENHAM, ME17 2GQ. TEL: 01622 231399  
W. [WWW.THEPATIOWAREHOUSE.CO.UK](http://WWW.THEPATIOWAREHOUSE.CO.UK) E. [INFO@THEPATIOWAREHOUSE.CO.UK](mailto:INFO@THEPATIOWAREHOUSE.CO.UK) F. [INTHEPATIOWAREHOUSE](https://www.facebook.com/inthepatiowarehouse)  
**OPEN TO THE PUBLIC AND TRADE 7 DAYS A WEEK**

## OUTDOOR LIVING LENHAM

OPEN 7 DAYS



## IS YOUR GARDEN SUMMER READY?

Pergolas, Gazebos, Garden Buildings | Garden Furniture to include Dining Sets,  
Lounge Sets, Benches, Bistro Sets, Garden Kitchens, BBQ's, Fire Pits,  
Outdoor Mirrors, Ornaments, Pots and so much more!

Unit 2, Ashmill Business Park, Ashford Road, Lenham ME17 2GQ [info@outdoorlivinglenham.co.uk](mailto:info@outdoorlivinglenham.co.uk)  
[www.outdoorlivinglenham.co.uk](http://www.outdoorlivinglenham.co.uk) 01622 231399



# ALFRESCO LIVING

The art of designing your dream outdoor kitchen

In recent years the popularity of outdoor kitchens has soared,  
transforming backyards into culinary sanctuaries.



Above: [gardenhousedesign.co.uk](http://gardenhousedesign.co.uk)

Left: Big Green Egg, [macknade.com](http://macknade.com)

Outdoor kitchen in West Malling, grilloliving.com



“

OUTDOOR KITCHENS OR BBQ KITCHENS ARE THE VERY BEST WAY TO MAKE THE MOST OF YOUR OUTSIDE SPACE AND THE TIME WITH YOUR FRIENDS AND FAMILY.



life-outdoors.co.uk



**F**rom sizzling barbecues and wood-fired ovens to stylish furniture, resilient worktops, and thoughtful accessories, this article explores the key elements that elevate your outdoor kitchen experience, turning it into a haven where gastronomy meets nature. Outdoor kitchens or BBQ kitchens are the very best way to make the most of your outside space and the time with your friends and family.

### **BBQs: grilling with flare**

The heart of any outdoor kitchen is undoubtedly the cooking medium. If you're a fan of the traditional smoky tastes associated with outdoor dining, then you can do no better than a good old-fashioned BBQ. From the simplicity of charcoal to the precision of gas and the aromatic charm of pellet grills, the choices are as diverse as your culinary aspirations. Imagine the symphony of flavours emanating from a well-seasoned steak on a charcoal grill or the convenience of a gas grill firing up at the push of a button. Modern BBQs go beyond mere functionality, incorporating smart technology for temperature control, ensuring your grilling endeavours are a seamless, delectable success. Customisation options abound, allowing you to match your BBQ to the aesthetic of your outdoor space, ensuring that the culinary centrepiece of your kitchen reflects both your style and grilling preferences.

### **Outdoor ovens: a culinary renaissance**

For those who yearn for the artisanal touch in their outdoor culinary adventures, the outdoor oven is a fantastic addition. The enchanting dance of flames in a wood-fired oven lends a cosy, exotic atmosphere to any party, and

transforms pizza-making into an art form, rendering crispy crusts and perfectly melted cheese. Of course, although a popular choice, the outdoor oven is not limited to pizza; its multifunctional capabilities extend to roasting, baking, and even smoking, bringing versatility to your open-air kitchen. Considerations in installation, fuel sources, and maintenance play crucial roles in selecting the right outdoor oven for your space, so we recommend consulting an expert, and engaging the services of professional installers.

### **Furniture: where comfort meets alfresco elegance**

Dining alfresco reaches new heights with carefully chosen outdoor furniture. From expansive dining sets for communal feasts, to cosy lounges that invite relaxation, your choices in outdoor furniture set the stage for memorable gatherings. Weather-resistant materials such as teak, wrought iron, or durable synthetics ensure longevity, while cushions and textiles add a touch of luxury. Stylish storage solutions, like cabinets and shelves, not only provide organisation but also enhance the aesthetic appeal of your outdoor kitchen. If you intend to get a lot of use from your outdoor furniture, then it really is worth splashing out on bespoke furniture from a master craftsman. This allows you to tailor the look and feel of your outdoor space, creating an atmosphere that seamlessly blends comfort with elegance.

### **Worktops: crafting aesthetic and practical surfaces**

The worktop, a rarely considered yet crucial component of your outdoor kitchen, dictates the functionality and aesthetic coherence of your space. Granite, with its timeless allure,

adds sophistication, while stainless steel embraces modernity with a sleek finish. Concrete, versatile and resilient, offers a contemporary touch. The choice of material depends on your preferences and the demands of your culinary adventures. Maintaining worktops is vital to ensuring longevity and visual appeal, with each material requiring specific care. Consider factors like heat resistance, ease of cleaning, and visual appeal when selecting the worktop that best complements your outdoor kitchen design. If you're opting for something less weatherproof (which can give you that delightful 'indoor dining outdoors' feel) then you'll do well to ensure that your outdoor kitchen is covered all year round, and protected from the elements. This will also allow you to get greater use from the space, even when the British weather is being characteristically unpredictable.



Above: [avivastonegranite.co.uk](http://avivastonegranite.co.uk) Below: [huckleberryhome.co.uk](http://huckleberryhome.co.uk)



### Accessories: the finishing touches

Transforming your outdoor kitchen into a complete oasis involves carefully curated accessories. Illuminate your culinary haven with outdoor lighting, creating an ambience that seamlessly transitions from day to night. To allow use of the area throughout more of the year, take a look at outdoor heating options as well. Essential refrigeration keep beverages cool and ingredients fresh, ensuring you're always prepared to whip up a culinary masterpiece. Quality utensils and tools, designed for

outdoor use, become an extension of your culinary skills. To elevate the atmosphere, consider integrating audio-visual elements, allowing you to cook to your favourite tunes. Finally, add a touch of nature with greenery and carefully chosen décor, completing the picture of an outdoor kitchen that is as visually appealing as it is functional.

With careful consideration and a touch of creativity, your outdoor kitchen will not only be a space for culinary delights but a testament to your lifestyle, seamlessly blending the joy of cooking with the beauty of the great outdoors. Cheers to the art of outdoor living!





Above and right: [northbarbeque.co.uk](http://northbarbeque.co.uk)  
Below: [charlieoven.com](http://charlieoven.com)





## G&D GARDENING & PAINTING SERVICES



- Garden clearance
- Garden maintenance
- Grass cutting/pruning
- Internal/external painting

For a free quote  
Tel: 07938 756617





# THE GATEWAY TO YOUR PERFECT HOME

Gates are not just functional barriers; they are also the first impression your home makes. Whether you're looking to enhance the aesthetics of your property, boost security, or add a touch of convenience to your lifestyle, there are myriad options.

This quarter we're taking a look at the charm and functionality of wooden gates, the intricate beauty of ornamental metal gates, the robust security features of security gates, and the cutting-edge technology behind automated gates. Additionally, we'll provide valuable tips on choosing, buying, and installing.

## WOODEN GATES

Wooden gates exude a timeless elegance that can transform the entrance of any home. The warm and natural appeal of wood blends seamlessly with various architectural styles and is the perfect aesthetic complement to a period home.

When selecting a wooden gate, consider the type of wood, its durability, and maintenance requirements. Hardwoods like teak and mahogany are excellent choices for longevity and resistance to weathering.



**Tips for buying and installing wooden gates**  
Choose quality wood: Opt for hardwoods that are known for their durability and resistance to decay.

**Proper sealing and finishing:** Apply a high-quality sealant and finish to protect the wood from moisture and UV rays.

**Professional installation:** Ensure your gate is installed by experienced professionals to guarantee stability and longevity.

## ORNAMENTAL METAL GATES

If you're looking to make a bold statement, ornamental metal gates are the way to go. Crafted with intricate designs, these gates serve as artistic focal points while providing a good level of security. Common metals used for ornamental gates include wrought iron, aluminium, and steel. The versatility of metal allows for customisation to match the aesthetic of your property.







*metalmastercanterbury.com*

### Tips for buying and installing ornamental metal gates

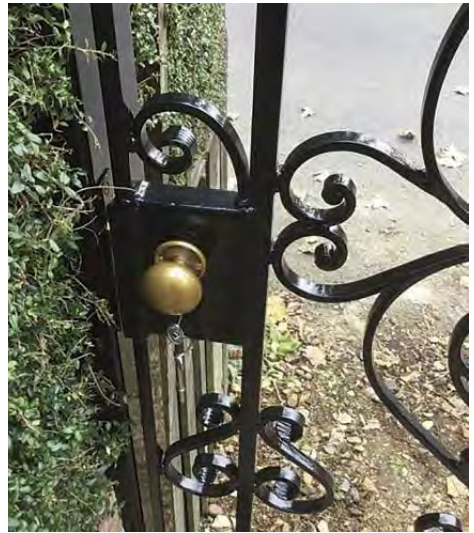
**Choose the right metal:** Consider the climate and maintenance requirements when selecting the metal for your gate.

**Design customisation:** Work with a skilled metalworker to create a design that complements the architectural style of your home.

**Rust prevention:** Apply a rust-resistant coating to ensure the longevity of your ornamental gate.

### SECURITY GATES

For those prioritising safety and protection, security gates are an excellent investment. These gates are designed to deter intruders and provide an additional layer of defence for your property. Security gates come in various materials, including steel and wrought iron, with features such as anti-climb designs, and electronic access control systems. We recommend that you not only speak to a



*metalmastercanterbury.com*

specialist design and fitting company, but also confer with your current security provider (who may be able to do the work themselves) as well as your home insurance provider, as additional security may reduce your current premiums.

### Tips for buying and installing security gates

**Prioritise strength and durability:** Choose a gate made from robust materials like steel for enhanced security.

**Electronic access systems:** Consider integrating electronic access control for added convenience and monitoring.

**Professional installation:** Security gates require precise installation for optimal functionality, so enlist the services of a professional.

### AUTOMATED GATES

Embrace the future with automated gates that add a touch of luxury and convenience to your lifestyle. Automated gates can be operated through remote control, keypad entry, or even apps. They offer not only security but also ease of access without the need to leave your vehicle.



### Tips for buying and installing automated gates

**Choose the right automation system:** Consider your preferences and budget when selecting an automation system.

**Professional installation:** Automated gates require precise installation of the motor and control systems for smooth operation.

**Routine maintenance:** Regularly inspect and maintain the automated components to ensure longevity and optimal performance.

Gates are more than just barriers; they are a reflection of your lifestyle and personal taste. Whether you opt for the classic charm of wooden gates, the intricate beauty of ornamental metal gates, the robust security of security gates, or the convenience of automated gates, there's a perfect option for every home.

By following the tips provided, you can make an informed decision when purchasing and installing gates, ultimately elevating the aesthetics, security, and convenience of your property.





# CONSERVATION NEWS



Photo: Instagram: tale\_victoria

## Make your message count

We have over 50,000 readers per issue

Our magazine is delivered directly through letterboxes in carefully targeted areas. Conservation News is also available for collection at selected supermarkets, garden centres, pubs, coffee shops, farm shops and independent retailers throughout Kent.

**Find out how advertising with us can boost your business**

**email: [dawn@conservationnews.co.uk](mailto:dawn@conservationnews.co.uk)**

# SECURITY SYSTEMS

Keeping your business, property and family secure

**Prestige Security Systems** are committed to providing high quality security equipment, installations and maintenance.



**E**stablished in 2004, Prestige Security Systems has a proud record for providing reliable, robust and affordable security solutions offering industry leading products to our ever-growing client base.

They are an accredited SSAIB Installer which has become a requirement for many businesses and homeowners to have due to insurance requirements. This provides confidence that your system has been installed and is maintained to the highest industry standards. Their professional team of engineers and support desk staff ensure that a high level of

service and after sales are provided at all times. The company offer a range of products including:

- Bespoke automated wooden gates made-to-measure to suit style of property
- Bespoke contemporary wrought iron gates.
- Traditional style automation system
- Repairs for all manufacturers
- High-end entry systems to all types of properties.

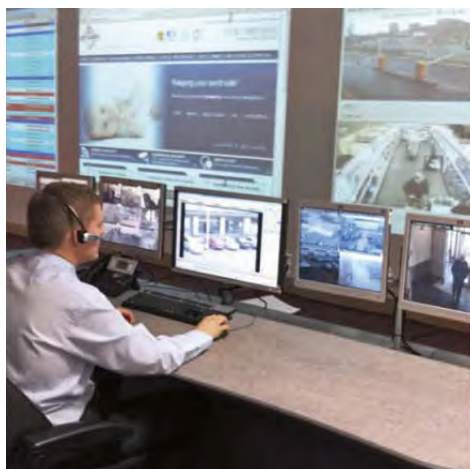
**PRESTIGE**  
Security Systems



## SERVICES

- Access Control
- CCTV
- Remote CCTV Monitoring
- Automatic Gates
- Intruder Alarm
- Intruder Alarm Monitoring/Mobile App
- Door Entry
- Barriers

For more information visit:  
[prestigesecuritysystems.co.uk](http://prestigesecuritysystems.co.uk)  
Tel: 01474 874929





# DOORS, PORCHES AND CANOPIES

Your home is more than just a shelter; it's a reflection of your personality, taste, and style. Often overlooked, doors, porches, and canopies play a crucial role in enhancing the overall aesthetic appeal and functionality of your property





In this article, we will explore how these elements can transform your living space into a welcoming haven, combining practicality with elegance.

**Doors: The gateway to style and security**

The entrance to your home sets the tone for what lies beyond. Investing in a well-designed and secure door not only boosts curb appeal but also adds an extra layer of protection. Consider options like solid wood, fibreglass, or steel doors, each offering a unique blend of durability and style. A beautifully crafted front door with intricate details or a pop of colour can instantly elevate the exterior of your home, making a lasting impression on visitors and passers-by alike.

*[londondoor.co.uk](http://londondoor.co.uk)*

“A BEAUTIFULLY CRAFTED FRONT DOOR WITH INTRICATE DETAILS OR A POP OF COLOUR CAN INSTANTLY ELEVATE THE EXTERIOR OF YOUR HOME...”

Do you want period appeal with modern durability? A composite door can be crafted to look like wood, while still offering excellent security. Consider stable doors, ornate hardware or decorative glass accents to take your frontage to the next level.

Beyond aesthetics, modern doors are equipped with advanced security features, ensuring the safety of your loved ones and





belongings. Smart door locks, video intercoms, and keyless entry systems provide a seamless blend of convenience and security, bringing your historic home into the 21st century, without looking out of place.

A professional installer can advise you on the best options for your home and security needs, so make sure you ask around to locate your finest local businesses.

#### **Porches: Creating inviting outdoor spaces**

A well-designed porch serves as an extension of your living space, offering a transitional zone between the indoors and outdoors. Whether you have a small, cosy stoop or a spacious wrap-around porch, this area presents endless opportunities for relaxation and even socialisation.





edenwindows.co.uk

Consider furnishing your porch with comfortable seating, vibrant cushions, and potted plants to create a welcoming atmosphere. Add a touch of personality with decorative lighting or hanging lanterns, turning your porch into a charming space to unwind after a long day or host intimate gatherings with friends and family.

Furthermore, porches provide shelter from the elements, allowing you to enjoy the outdoors regardless of the weather. Rain or shine, a well-designed porch provides a versatile space where you can bask in the beauty of nature without compromising on comfort.

Again your choice of material should be in keeping with your period aesthetic. Wood or composite lend old fashioned charm, while brick build porches can be extremely elegant.

Your porch should be as functional as it is beautiful. If this is where you rid yourself of muddy boots, then ensure that flooring is durable and walls are easy wipe. If your porch is a designated storage facility, then keep coats and boots out of sight with in-built cupboards.



sharps.co.uk

### Canopies: Functional elegance

Canopies serve as the crowning jewels that tie together the aesthetic appeal of your frontage. These overhead structures not only enhance the visual appeal of your property but also serve a practical purpose by providing shade and protection from the elements.

Canopies come in retractable designs as well, making them ideal for when you want to hide from the midday sun, but allow the fresh morning rays into your home.



*zac.ltd*

For a more eco-friendly approach, consider incorporating greenery into your canopy design. Pergolas adorned with climbing vines or retractable canopies with built-in planter boxes not only add a touch of nature but also contribute to a sustainable and visually stunning outdoor space.

Doors, porches, and canopies are integral elements that can significantly enhance the overall appeal and functionality of your property. By investing in high-quality, aesthetically pleasing doors, creating inviting porches, and incorporating stylish canopies, you not only elevate the aesthetics of your home but also enhance your lifestyle.

These elements serve as more than mere structural components – they are the gateways to a warm and welcoming home, reflecting your unique style and creating spaces that seamlessly blend the indoors with the outdoors.



*ttvc.co.uk*



# The Antique Oak Flooring Company

SPECIALISTS IN ANTIQUE AND RECLAIMED FLOORING



VIEWING BY APPOINTMENT

Willow Court Farm, Bilsington Road, Ruckinge, Ashford, Kent TN26 2PB

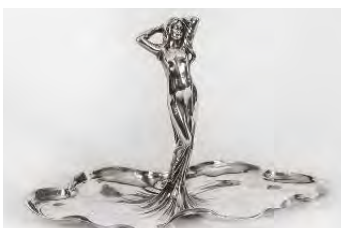
T: 01233 659508 M: 07733 263540 [www.antiqueoakflooring.com](http://www.antiqueoakflooring.com)

# VALUATION DAY

21st March at Bagham Barn Antiques with Catherine Southon



*Silver lightning handles coffee set*



*Silver-plated sweet, visiting card, key tray*



*Mary Gregory vases*

Bagham Barn is welcoming back BBC's Antiques Road Trip expert and auctioneer, Catherine Southon, for a Valuation Event on Thursday, 21st March, from 10.30am to 3pm.

At one of Catherine's valuations at Bagham Barn Antiques, a large atlas was pulled out from a carrier bag which had been found hidden behind a wardrobe in a deceased relative's house. This unassuming atlas, which superficially appeared in poor condition, was a rare elephant folio-sized atlas of the then-known world, published in London (c.1733) by the renowned cartographer Herman Moll and went on to sell for £24,000.

Bagham Barn Antiques, conveniently located adjacent to Chilham railway station, continues to be an engaging experience for all visitors. It is a warm and inviting shopping environment not only for collectors but also for gift list inspiration, boasting over two floors of fine antiques and a variety of vintage items.

It is recommended to make an appointment in advance. To reserve your complimentary appointment, please call Bagham Barn at 01227 732522 during opening hours between Thursday and Sunday, 10am – 4 pm, and Saturdays, 10 am – 5 pm.



*Valuable Herman Moll's Atlas*



# Bagham Barn

ANTIQUES & INTERIORS

Canterbury Road (A28)  
Chilham Kent CT4 8DU  
Tel: 01227 732522  
baghambarnantiques.com



Open Thursday, Friday & Sunday 10am-4pm and Saturday 10am-5pm

Bank Holiday Mondays 10am-4pm

TEA ROOM & LARGE CAR PARK



## The Hidden Tea Room

Serving freshly baked cakes,  
savoury snacks and lunch,  
local brew teas and  
excellent coffee





Established 1988



## DOMESTIC CLEANING SERVICES LTD

Regular or One-off Cleaning

Homes and Holiday Lets

End of Tenancy

Moving Cleans

Spring Cleans

Professional, Friendly, Reliable Service

CALL US NOW FOR A FREE QUOTATION

Tel: 01227 277033 | [www.supermaids.co.uk](http://www.supermaids.co.uk) | [info@supermaids.co.uk](mailto:info@supermaids.co.uk)



## Wells & White Bespoke Upholstery

Domestic and  
Commercial  
Commissions

Retrain and  
gain a professional  
qualification



Or give upholstery a go on one of our leisure courses

Tel: 07810 792123 | [www.wellsandwhite.co.uk](http://www.wellsandwhite.co.uk)  
[wellsandwhite@outlook.com](mailto:wellsandwhite@outlook.com)







# Emanuel's

Soft Furnishing Interiors

Specialist in blackout solutions for the home. All with the option of the latest motorised systems for blinds & curtains ♦ Great selection of fire retardant blinds for commercial properties ♦ Sun sensor & patio awnings ♦ Track specialist for bay windows ♦ Bespoke curtains, blinds, shutters & upholstery ♦ Wallpaper & home decor ♦ Free quotation from a family-run business in Tankerton for 35 years.



117 Tankerton Road, Whitstable CT5 2AN | 01227 770039 | [www.emanuels.co.uk](http://www.emanuels.co.uk)

## LOG BURNING ★ MULTI-FUEL ★ CAMP COOKING



2 Saddleton Road, CT5 4JB Tel: 01227 266209  
whitstablestoveshop.co.uk



Apprentice served with over 40 years experience in exterior and interior decorating. References available.

Tel: 01634 235773 or 07971 871433 • garymillerdecorator@gmail.com





# HOW TO... CLEAN A FIREPLACE

## ■ PREPARE

The first stage of the process is to move furniture, roll up rugs, and protect the floor with dust sheets. Next empty ashes and unburnt wood or coal that is still in the hearth into a bucket. Sweep the fireplace clean or use a vacuum cleaner so you can better examine the fireplace beneath.

## ■ REPAIR OR REPLENISH FIRE BRICKS

Check the insulating fire bricks to the back and sides of the hearth. Badly deteriorated bricks will need to be replaced but cracks and chips can be made good with fire cement. The brick must be dry and dust-free – use a knife to push the cement in place. Following a repair you may need to light a fire to cure the cement.

## ■ BURNT BRICK FIREPLACES

If the bricks of the fireplace are burnt, you could try TSP (trisodium phosphate), which is a powerful cleaner. Use with extreme caution. Wear rubber gloves, safety goggles, and a mask and make sure your arms and legs are covered. The room should also be well ventilated. We advise trying gentler cleaning methods first.

## ■ CAST IRON FIREPLACES

Cast iron is the most common material used to make period fireplaces and can usually be brought back to life where it has deteriorated. Remove loose material and rust using a wire brush. If necessary, you can use a chemical rust remover. Following the manufacturer's instructions, finish the metal with black stove grate polish and burnish with a brush or soft cloth, or use a heat-resistant paint instead. Never use water on cast iron or it will rust.



Expertly installed quality carpet and flooring

64-65 High Street, Wingham, Canterbury, Kent, CT3 3BJ

Tel: 01227 721 938 [www.redflooring.co.uk](http://www.redflooring.co.uk)



# The Canterbury Auction Galleries

FINE ART  
AUCTIONEERS  
SINCE 1911



thecanterburyauctiongalleries



## Where will you buy your next Rolex?

### FORTHCOMING AUCTIONS

**Friday 12th / Saturday 13th April**

Consignment deadline 8th March

**Friday 7th / Saturday 8th June**

Consignment deadline 3rd May

Established in 1911, we are Kent's leading auctioneers and valuers of  
Art • Collectibles • Antiques • Jewellery • Clocks • Coins • Ceramics • Watches • Gold • Silver

Telephone: 01227 763337 Email: [general@tcag.co.uk](mailto:general@tcag.co.uk) Visit: [www.thecanterburyauctiongalleries.com](http://www.thecanterburyauctiongalleries.com)

# COLLECTED WORKS

Rare paintings from the estate of award-winning Kent actor Peter Barkworth come up for auction in April, including original works by LS Lowry, Bridget Riley and many other key artists.

For younger readers, Barkworth (1929-2006) was a much-loved household name in his heyday, acclaimed for his stage, film and TV roles, including Dr Who, The Avengers, Colditz, Telford's Change and Where Eagles Dare in the sixties and seventies – right up to Stephen Fry's film *Wilde* in 1997. The auction includes some of Barkworth's many acting awards, including a BAFTA.

Lesser known was that collecting art was his lifelong passion. When he died he bequeathed 55 works from his exquisite collection to the National Trust to be hung at Fenton House, London, a few minutes' walk from his home in Hampstead's historic Flask Walk.

But he kept hold of his favourites, leaving most to his partner David Wyn Jones, who died last year. Now these very special artworks are coming up for auction on April 12 & 13 at The Canterbury Auction Galleries.

Ivon Hitchens, William Scott, Samuel Peploe and Peter Lanyon are just a few artists along with Lowry and Riley and many others represented in the exciting sale, ranging from traditional 19th Century watercolours to 20th Century abstract studies.

Many have charming, personal handwritten notes on the back. Some of these note the original price paid and reveal

what a good 'eye' Barkworth had for quality, as the values of many of the paintings have spiralled.

Barkworth was born in Margate, and never lost his love of the south coast, keeping a home in Folkestone until his death and becoming president of the town's Metropole Arts Centre. But he needed to live in London near his acting work and his teaching role at the Royal Academy of Dramatic Art (RADA), where his students included Anthony Hopkins, Simon Ward, Diana Rigg and Richard Wilson.

Early in his career he went into repertory with the Arthur Brough Players in Folkestone, making his debut in 1948 and appearing many times at the town's Leas Pavilion. Reportedly, Brough fell out with him quite spectacularly however, when Barkworth left the players for a similar role in Sheffield.

Do please remember to register if you want to bid.

**For full details visit:**  
**[thecanterburyauctiongalleries.com](http://thecanterburyauctiongalleries.com)**







Sir Matthew Smith (1879-1959). Oil painting on canvas – “Mixed Flowers in a Vase”, 28ins x 12ins, in gilt moulded frame. Estimate, £8,000.



Ivon Hitchens (1893-1979). Oil painting on canvas – “Sussex River, Evening Sky”, signed and dated 1969, 16ins x 29.25ins, in glazed white gilt frame. Hitchens was much loved for his landscape paintings featuring swathes of bright colour, many painted in the outdoors around his secluded Sussex home. He was one of the earliest members of the experimental ‘Seven and Five Society’ alongside Ben Nicholson, Henry Moore and Barbara Hepworth. Estimate, £30,000.

## KEY ARTWORKS

There are two works by Laurence Stephen Lowry (1887 – 1976). One is a rare pen and ink study of people and animals, signed and dated 1971, 8.5ins x 11.25ins, in a glazed gilt frame. On the back is a handwritten label: “I bought this in 1979 at a sale in Sotheby’s on 14th March, for £1000. It’s always been a favourite”.

One of our most popular painters, most people in Britain can recognize a Lowry when they see one. He studied painting and drawing in the evenings at the Municipal College of Art (1905 –15), and at Salford School of Art (1915 – 25), while working, surprisingly, as a rent collector during the day. He was passionate about the importance of drawing, considering it an art form in its own right. We agree! Estimate, £25,000.



# Anthony Swaine

## ARCHITECTURE LTD

Conservation • Design Consultancy • Listed Buildings  
Urban Design • Joinery Detailing • Traditional Shopfronts



**Initial consultation undertaken  
free of charge**

**Specialising in traditional design & works to  
historic buildings; timber framed structures; &  
new buildings in the historic context**

The Bastion Tower,  
16 Pound Lane,  
Canterbury,  
Kent CT1 2BZ

Tel: 01227 462680  
mail@anthonyswaine.co.uk  
www.anthonyswaine.co.uk

# Ed Parry

## Plumbing & Heating

**Installation, Servicing & Repair**

- **Boilers**
- **Cookers**
- **Central Heating**
- **Bathrooms**
- **Power Flushing**
- **Showers**



**Landlord gas safety certificates**

**01227 266236 • 07976 925224**  
**ed.parry@me.com**  
**www.edparryplumbingandheating.co.uk**



**INSPIRED INTERIORS**  
KITCHENS • BATHROOMS • BEDROOMS

Family-owned, family-run, kitchen  
and bathroom specialists, with over  
70 years of combined experience

Project managed installs on kitchens and  
bathrooms available. We work with all the  
trades, organising everything from building  
works to final decoration and take full  
reasonability of everything.

YOUR mid-Kent destination showroom!  
info@inspired-interiors.uk

01622 851155

Blue House Farm, Warren Street  
Lenham, Maidstone ME17 2ED

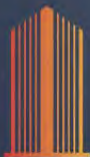




- Kitchen fitting
- Bathroom installation
- Plastering
- Rendering
- Painting & decorating



## TRANSFORMING HOMES



EG PROPERTIES (KENT)

**Phone: 07707 193822**

email: [egpropertieskent@gmail.com](mailto:egpropertieskent@gmail.com)

Instagram: [@EGproperties](https://www.instagram.com/EGproperties)

Storage basket, £25,  
folksy.com



Watering can, £18.95,  
rexlondon.com



Cushion, £29.99,  
claire-louise.co.uk



Wreath, £32.99,  
giselagraham.co.uk



Mug, £8.49,  
giselagraham.co.uk



Plant mister, £16  
ellajames.co.uk



Flutes, £35,  
bode-living.com



Salt pig, £19.95,  
britlocker.com



Seashells throw, £117,  
jtextile.co.uk



Ercol Marlia chair,  
from £849, lenleys.co.uk

# Home style

## GET THE LOOK



Clock, £38,  
nineangels.co.uk



Place mats, £45,  
casabyji.com



Candle, £29.50,  
next.co.uk



Jug, £29.50,  
thewisteriatree.co.uk



Candle holder, £26.99,  
softstore.co



Mixer, £529,  
kitchenaid.co.uk



Throw, £30,  
waltonshop.co.uk



Chair, from £300,  
londonroadfurniture.co.uk



Chest of drawers, £445,  
cuckooland.com



Wine glasses, £30,  
curatedliving.co.uk



Dish, £55,  
vam.ac.uk/shop



Pink cushion, £30  
lenleys.co.uk



Everhot 110i, from £12,200,  
rubyandjo.co.uk



Table lamp, £40,  
dunelm.com



Bistro set, £199, dobbies.com



Footstool, £79,  
cultfurniture.com



Pink pear, £9,  
Copperfields of Whitstable



Photo frame, £22,  
oliverbonas.com



Vase, £49,  
cultfurniture.com



Salt & pepper mills, £18,  
habitat.co.uk



Cushion, £130,  
juliabrendel.com



Peach towel set, £22.99  
homescapesonline.com



Egg plate, £4.99,  
tkmaxx.com



Mixing bowl, £30,  
johnlewis.com



Card candle cover, £12,  
nicholasengert.co.uk



Chair, call for price,  
wellsinteriors.co.uk



Mirror, £90,  
bode-living.com



Oven glove, £25,  
sophieallport.com



Recipe tin, £20,  
Copperfields of Whitstable



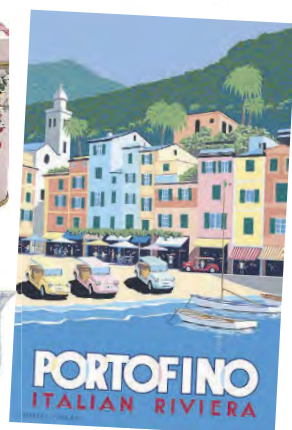
Vase, £10,  
talkingtables.co.uk



Vase, £95,  
oka.com at Hoopers,  
Tunbridge Wells



Teapot, £28,  
neptune.com



Fiat 'Jolly' - Portofino print  
£420, pullmaneditions.com



**alternative  
flooring**

DEWITT RESIDENTIAL FLOORING LIMITED

PLEASE CONTACT US TO DISCUSS YOUR FLOORING REQUIREMENTS: 01622 858940

9 HIGH STREET, LENHAM, KENT. ME17 2QD | [WWW.DEWITTFLOORS.CO.UK](http://WWW.DEWITTFLOORS.CO.UK)





# UPSCALE VANITY UNITS for period homes

Vanity units designed for period homes offer a perfect blend of timeless elegance and modern functionality, transforming bathrooms into luxurious retreats.

In period homes, where historical charm and architectural significance take precedence, choosing the right vanity unit becomes a crucial element in preserving the aesthetic integrity of the space.

Period homes boast unique architectural features and design elements that demand respect and preservation. Upscale vanity units cater to this demand by incorporating exquisite details reminiscent of bygone eras. Intricately carved wood, ornate handles and vintage-inspired finishes create a seamless connection between the vanity unit and the historical essence of the home. Choosing a vanity that complements the period-specific details ensures that the bathroom becomes an extension of the home's rich heritage.

“

WITH PERIOD APPROPRIATE VANITY UNITS, THE EMPHASIS IS PLACED ON USING HIGH-QUALITY, TIMELESS MATERIALS THAT NOT ONLY EXUDE LUXURY BUT ALSO STAND THE TEST OF TIME.

#### Customisation for character

One size does not fit all, especially when it comes to period homes. Bespoke vanity units offer a range of customisation options, allowing homeowners to tailor the design to match the unique character of their space. From choosing the right wood finish to selecting hardware that

*[www.inspiredbathroomsandkitchenskent.com](http://www.inspiredbathroomsandkitchenskent.com)*







complements existing fixtures, customisation ensures that the vanity becomes an integral part of the overall aesthetic.

With period appropriate vanity units, the emphasis is placed on using high-quality, timeless materials that not only exude luxury but also stand the test of time. Solid wood, marble, and granite are often favoured choices, reflecting the enduring elegance of period homes. These materials not only add a touch of opulence but also contribute to the longevity of the vanity, making it an investment in both style and durability. Look into local carpenters and Spring 2024 • CONSERVATION NEWS

furniture builders who specialise in reclaimed materials and period designs.

### **Modern functionality**

While preserving the historical charm is paramount, modern functionality is equally important in today's bathrooms. A good vanity unit should seamlessly integrate modern conveniences such as soft-close drawers, hidden storage solutions, and innovative lighting options. This blend of classic aesthetics and contemporary functionality ensures that the bathroom serves as a practical and luxurious space for daily rituals.



Period homes often come with unique spatial challenges. Upscale vanity units are designed with space optimisation in mind, offering compact yet efficient designs that make the most of limited square footage. Clever storage solutions, such as pull-out shelves and built-in organisers, ensure that the vanity becomes a practical addition to the bathroom without compromising on style.

#### **Versatility in design**

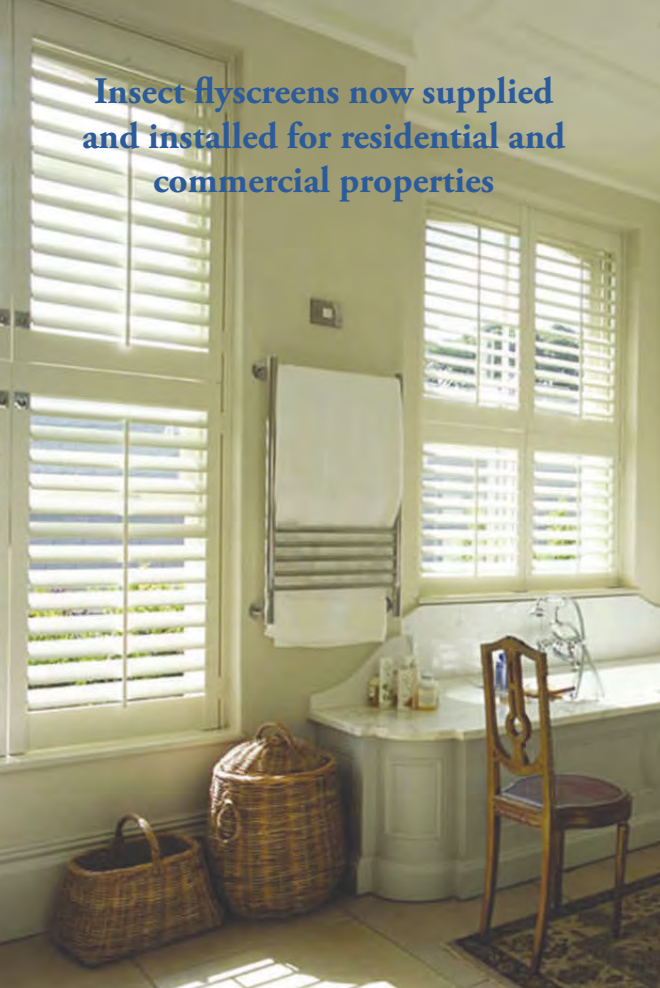
Vanity units cater to a diverse range of period styles, from 1950s elegance to Tudor rustic

appeal. The versatility in design ensures that homeowners can find a vanity that blends with the specific architectural nuances of their period home. From freestanding units with intricate legs to wall-mounted vanities that evoke a sense of modernity within a historical context, the options are vast, offering a perfect fit for any period-inspired bathroom.

Investing in a bespoke or high-quality vanity unit is not merely a practical decision but a commitment to enhancing the overall aesthetic and value of a period home's bathroom.



Insect flyscreens now supplied  
and installed for residential and  
commercial properties



# CGS BLINDS & SHUTTERS LTD

NEW MATERIALS |

FINANCE OPTIONS AVAILABLE

• Huge choice • FREE quotations

Tel: 01227 278643

146 Tankerton Road, Whitstable CT5 2AW

[www.cgsblinds.co.uk](http://www.cgsblinds.co.uk)

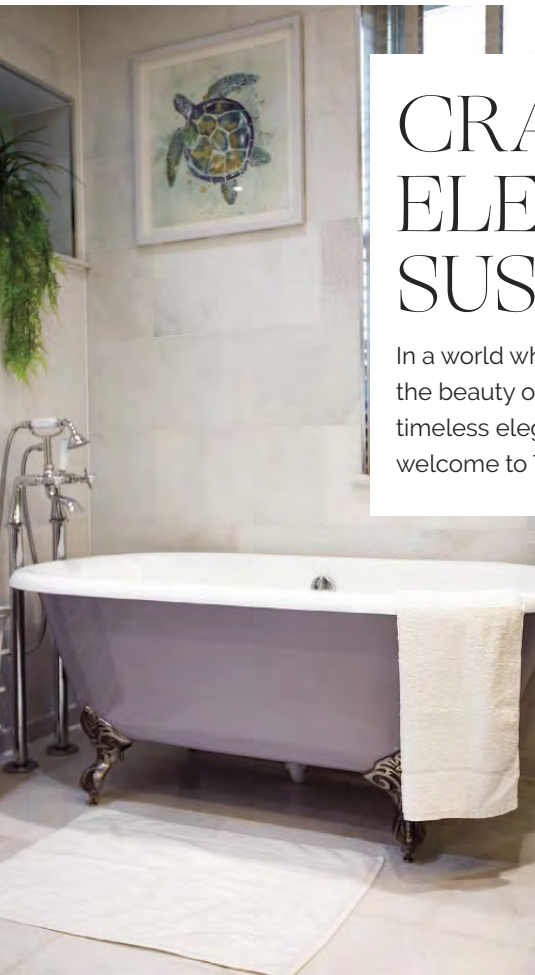


Find us on Facebook

Proud members of

[Checkatrade.com](http://Checkatrade.com)

**BBSA**  
BRITISH BLIND & SHUTTER ASSOCIATION



# CRAFTING ELEGANCE & SUSTAINABILITY

In a world where mass production often overshadows the beauty of individuality, there exists a realm of timeless elegance and bespoke craftsmanship – welcome to The Victorian House.

## Cast iron radiators and baths

Our cast iron radiators are not just sources of warmth, but exquisite pieces that add character to your spaces. Beyond their aesthetic charm, they hold the remarkable ability to transform your living spaces. They are not only functional but also symbolic of our commitment to sustainable living. Their durability ensures longevity, reducing the need for frequent replacements and contributing to a more eco-conscious lifestyle.

Our cast iron baths invite you to indulge in moments of relaxation, combining classic design with modern luxury. They are more than mere fixtures; they're invitations to unwind, escape, and rediscover the art of relaxation. Crafted with meticulous attention to detail, our baths blend classic design with modern functionality, offering an experience that transcends time. Whether you envision a sanctuary of solace or a focal point of opulence, our cast iron baths stand ready to transform your bathing ritual into a symphony of comfort and elegance.

**A**t The Victorian House, we don't just create furniture and decor; we weave stories into every piece. Our bespoke indoor and outdoor granite and marble tables are meticulously crafted, each slab telling a tale of nature's artistry. The interplay of color and texture in our marble vanity units and granite worktops redefine sophistication, while our marble floor and wall tiles transform spaces into timeless works of art.



### Glass and vitreous mosaics

Delve into the world of glass and vitreous mosaics, where colours dance and patterns come alive creating stunning visuals that tell stories of tradition and innovation.

### Ceiling roses and coving

Elevate your ceilings with our beautifully designed ceiling roses and coving. These ornate details harken back to eras of grandeur, breathing life into every room. With a dedication to preserving history while embracing contemporary sensibilities, The Victorian House ensures that each piece harmonises with your space flawlessly.

### Discover our craftsmanship

We invite you to step into our showroom:  
**The Two Pines, Sandwich Industrial Estate,  
Sandwich, CT13 9LY.**

### Invitation to elegance

Amid the clamour of modern living, The Victorian House stands as a testament to the beauty of bespoke craftsmanship. Each creation is more than an object; it's an ode to heritage, a celebration of individuality, and a commitment to sustainability.

Visit [www.thevictorianhouse.co.uk](http://www.thevictorianhouse.co.uk), where you'll discover a curated collection that transports you to a world where every piece has a soul. Join us on social media, [@the.victorianhouse](https://www.instagram.com/the.victorianhouse).

[Support@thevictorianhouse.co.uk](mailto:Support@thevictorianhouse.co.uk)  
01304 611 161



**THE VICTORIAN HOUSE**

**BESPOKE  
FURNISHINGS & FITTINGS**





**INVICTA GROUP  
SERVICES LTD**

At Invicta Group Services,  
we pride ourselves  
on delivering the best  
quality media walls  
Kent has on offer.

For more information, call  
us or visit our showroom

**28 Oxford Street  
Whitstable**

**Kent CT5 1DD  
01227 770510**

[invictagroupservices.co.uk](http://invictagroupservices.co.uk)

## Save on your home insurance



### Bespoke policies offered, including:

- Non-Standard Construction
- Listed Buildings
- Adverse Flood and Subsidence History
- High Value Homes and Contents

We have over 25 years experience in the  
Specialist Home Insurance Market, so give  
us a ring and get your personally tailored  
quote now!

**gsi-insurance**.com

GSI Insurance Services (Southern) Ltd  
118 John Wilson Business Park  
Whitstable  
Kent  
CT5 3QY

**Tel: 01227 772 775**

**Your Specialist Home Insurance Broker**



# THE RISE OF MEDIA WALLS

Transforming homes into entertainment havens

In the ever-evolving landscape of home design, one trend has captured the imagination of homeowners and interior designers alike – the media wall.



*[invictagroupservices.co.uk](http://invictagroupservices.co.uk)*

One are the days of bulky entertainment centres; today, media walls are taking centre stage, seamlessly integrating technology with aesthetics to create a stunning focal point in modern homes. This article explores the growing trend of media walls, their benefits, and the myriad options available for those looking to transform their living spaces.

### **The evolution of home entertainment**

The concept of a dedicated space for home entertainment has come a long way since the era of bulky television cabinets. With the advent of sleek, flat-screen TVs and advancements in audio-visual technology, homeowners are now seeking more sophisticated and integrated solutions for their home entertainment needs. Enter the media wall – a versatile and stylish way to showcase cutting-edge technology while maintaining a harmonious design in any room.

### **Benefits of media walls**

**Space optimisation:** Media walls are designed to maximise space by eliminating the need for separate entertainment units. With sleek, wall-mounted designs, these setups contribute to a more open and organised living space, ideal in those period homes that may have smaller rooms.

**Aesthetic appeal:** Media walls are not just functional; they also serve as design statements. Homeowners can choose from a variety of materials, finishes, and styles to complement their interior aesthetics, turning their media wall into a work of art that seamlessly blends with the overall décor, integrating modern designs with a period aesthetic.

**Integrated technology:** The heart of any media wall is its technology integration. From smart

“THE CONCEPT OF A DEDICATED SPACE FOR HOME ENTERTAINMENT HAS COME A LONG WAY SINCE THE ERA OF BULKY TELEVISION CABINETS.

TVs to high-quality sound systems and smart home automation, these walls serve as a hub for all things entertainment. Hidden wiring and built-in speakers contribute to a clean and clutter-free appearance.

### **Options for media walls**

**Floating shelves and cabinets:** For a modern and minimalistic look, consider floating shelves and cabinets. These allow for the integration of audio-visual components, gaming consoles, and streaming devices while maintaining a sleek and uncluttered appearance.

**Customised built-ins:** Tailor-made media walls offer the ultimate in personalisation. Homeowners can work with designers to create a bespoke solution that fits their unique space, incorporating storage, display areas, and hidden compartments for a clean and seamless appearance.

**Feature walls with texture:** Textured feature walls add a touch of luxury and visual interest to the media space. Whether it's a wood-panelled accent wall or a stone feature, these elements elevate the design of the room while providing a backdrop for the entertainment centre.

**Interactive display walls:** The future of media walls lies in interactive displays. With advancements in technology, homeowners can now turn entire walls into interactive touchscreens, perfect for gaming, virtual meetings, or immersive movie nights.





*josephmccarthy.co.uk*

**Artistic media walls:** Blend technology and art with media walls that incorporate digital displays for curated artwork or dynamic visuals. When not in use, the wall transforms into a canvas, adding an extra layer of sophistication to the living space.

The trend for media walls is not just about keeping up with the latest in technology; it's a holistic approach to redefining the way we experience entertainment at home. As homeowners increasingly seek a seamless integration of technology and design, media walls have become a symbol of sophistication

and functionality. From customisable built-ins to interactive displays, the options are as diverse as the preferences of those who seek to make a statement in their homes.

As we navigate the future of home design, one thing is clear – the media wall is here to stay, offering a canvas for creativity, a hub for entertainment, and a testament to the seamless integration of technology into our everyday lives. So, whether you're a tech enthusiast or a design aficionado, consider making a media wall the centrepiece of your home, and embark on a journey where style meets functionality in perfect harmony.

# WHAT IS A MIRROR TV?

A clever solution to the problem - I want a TV but don't want an ugly black box in the room. The benefit of a mirrored television is that it's a beautiful mirror and only a TV when you want it to be.



**Is the look suitable for period homes?**

Yes... suitable for all interior styles. The right choice of frame style is the key. We are specialist frame designers and make both traditional and contemporary pieces.

**Are the TVs good quality?**

We use the latest high-end TVs (usually Samsung) but we can incorporate most TV brands into this concept if our client has a particular brand they prefer.

**What size TV do I need?**

We can advise. We tend to design the mirror for the space then fit whatever the largest TV size will fit in the design. It is also possible to choose the size TV and design the frame to work with it.

**What sort of price range are they?**

The choice of frame and size of TV naturally affect the price. We've made Mirrored TVs from £4k to £30k

**Is the TV 'invisible' in mirror mode?**

Yes it is fully disguised behind the mirror.

**How do I go about getting one?**

It all starts with a conversation... either call, email or visit and we'll be happy to help.

Joseph McCarthy Mirror & Framemakers  
The Pantiles Coach House,  
Tunbridge Wells, TN2 5BF  
01892 527528

**\*\*Easy parking outside our showroom\*\***

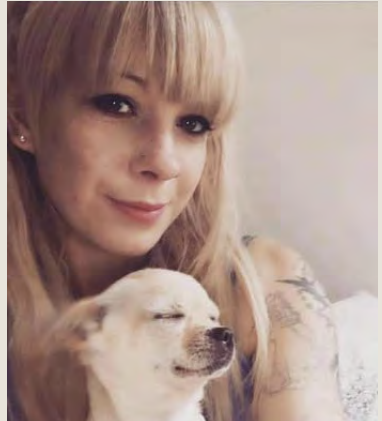




- ARTIST PROFILE -

# EVERY LITTLE THING SHE DOES IS MAGIC...

We meet artist Charlie Wallace and delve into her world of Magical Miniatures



It's always intriguing to know why or how someone embarks on a certain course of action that leads them into what seems to be for them just the right path. We've featured many artists and craftspeople in our magazine over the years, and explored the reasons that led them to end up fulfilling their dreams, desires and ambitions. It can sometimes hinge on a chance event, or it could be any number of things, maybe in childhood something sparked their imagination, or maybe a well-meaning mentor encouraged them at a propitious time in their

FAIRY HOMES,  
FANTASTICAL FURNITURE  
AND MAGICAL ACCESSORIES.



life, or it may be something as simple as being offered an opportunity that suddenly meant that everything just slotted into place, so that their talents had the chance to come to fruition.

On that theme here's another tale of a young artist who is now thankfully enjoying making the art she loves. Let's start at the beginning and rewind to Charlie's childhood. She was, there are no surprises here, always painting and drawing as a young girl and from an early age was fascinated by art. A key moment could well be when her father made her a wonderful doll's house when she was about six years old, which is a treasured memory and inspired her to look at the world in a small scale, and it seems it was the beginning of a love affair with little folk-like fairies and magical creatures that inhabited a mysterious miniature mindscape. As she grew up she sought out and studied the work of artists such as Cicely Mary Barker, who created the enchanting Flower Fairies books that depict fantasy figures of elves, fairies and pixies combined with beautifully executed and

botanically accurate images of flowers, that have delighted children and adults alike for many years. The work of Allan Lee, who is well-known for his illustrations of JRR Tolkien's *The Hobbit* and *The Lord of the Rings*, was also an inspiration for Charlie, amongst several others who added fuel to the fire of her imagination for all things magical, mystical and fairy-like.

As with many creative young people, it was a natural next step for Charlie to move on to study art at her local college in Canterbury. This gave her the necessary environment to allow her to develop her skills and vision, surrounded by like-minded artists and with the support of mentors, like her tutor Clive Sword. It was here, with encouragement from Clive, she created her first real piece of 3-D art, which was a small bronze dragon. Prior to this Charlie's work had been two dimensional, so this may well have been a watershed moment.

On leaving college in Canterbury, she was awarded a scholarship to the London College of Fashion to study a BA (Hons.) in Fashion



“CHARLIE’S STUDIO IS THE HUB OF HER CREATIVITY, SURROUNDED BY ALL HER MATERIALS: CLAY, POLYMER, PAINTS, TOOLS AND NATURALLY SOURCED OBJECTS LIKE PINE CONES AND WOOD.

Illustration. This may well sound like the next logical step in the formation of a budding artist; however it may instead have been an episode where her path veered off in a direction that didn’t particularly feel right. Charlie says, “Maybe I should have listened to my gut feeling. There was something very special about making the little bronze dragon, it felt right to be shaping something and creating it in three dimensions. As much as I enjoy drawing and painting, I think maybe the fashion illustration course just wasn’t right for me and I craved

something else. Perhaps I should have paid more attention to Clive’s advice; he had said the dragon was great and that maybe I should consider working more in 3-D.”

Such is life’s rich pattern that some years later in the strange circumstances that we all found ourselves in during lockdown, when many people were feeling a bit lost and aimless wondering what to do to occupy themselves, Charlie’s mum asked her to build her a fairy house. It seems strange that a chance request, that could have been inspired by the memory of her father making her a doll’s house, may have sparked something in Charlie, but make a fairy house she did. Using any materials she could find to hand and drawing on the many years of fascination with artists that had always inspired her along with her love of nature, she began to create, learning as she built. She realised she had become bored with two-dimensional and was relishing creating in





three dimensions; the floodgates opened, as she realized she loved what she was doing. The first fairy house was much admired and she started to get commissions to create other miniatures and doll's houses. She was spurred on by additional sources of inspiration having found the works of miniature artists Brian and Wendy Froud, and other favourite miniaturists, Janny Warnaar, Robert Crouch and Thomas Murray.

Charlie's studio is the hub of her creativity, surrounded by all her materials: clay, polymer, paints, tools and naturally sourced objects like pine cones and wood. She creates smaller objects like miniature food items, which can take only a few hours to make. The dragons however, can take over a month to hand-sculpt and paint. The fairy houses can take months to plan, research, construct, paint, dress and complete. Each work is totally unique and a one-off.

Charlie has found an outlet for the works by showcasing them at various shows and fairs around the country such as the Doll's House Festival in Kensington and the Miniatura Show in Coventry. The schedule of shows, preparing and making topical themed works for them, and completing commissions keeps Charlie very busy indeed, so busy in fact she's recently had to turn down invitations to show her works at other fairs in Paris and Falkirk.

"I'm just so lucky to have found my niche," says Charlie, "I'm creating work that I love making and I'm in a position I never thought I'd be in, making a living by selling the work that I love making. I'm so thankful to the people who have helped me find my way, like my mentor Clive Sword, and to my fellow miniaturists who have helped inspire me."

**To find out more about Charlie Wallace's work go to: [charliesmagicalminiatures.co.uk](http://charliesmagicalminiatures.co.uk)**



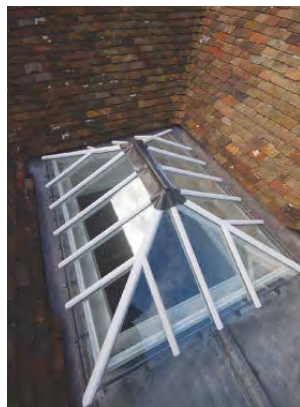


# SPECIALISTS IN ROOFING



Canterbury Roofing and Building is a family-run business with over 35 years' experience working in Kent and surrounding areas. We have vast experience of conservation and other roofing works.

- Guttering
- Flat roofing
- Velux and sky lights
- Conservation work
- Tiling
- Pointing and chimney work
- Slating
- Lead work



---

**FOR MORE INFORMATION  
AND TO CONTACT US:**

[www.canterburyroofing.com](http://www.canterburyroofing.com)

**Tel: 01233 647867**

**or 07976 325520**

[info@canterburyroofing.com](mailto:info@canterburyroofing.com)

---



ORLESTONE OAK

KENT · ENGLAND

# Bespoke Flooring

LONG & WIDE · PRODUCED IN KENT · FINISHED BY HAND



JOINERY



OAK FRAMED BUILDINGS



DECKING



CLADDING

For more information on pricing or fitting, or to place an order

CALL **01233 732179** VISIT **[orlestoneoak.co.uk](http://orlestoneoak.co.uk)**



# A.T. PALMER LTD

RESTORATION SPECIALISTS EST.1949

OVER 70 YEARS IN BUSINESS



| EMPLOYED SKILLED WORKFORCE  
| RENOVATIONS & EXTENSIONS  
| CONVERSIONS & ALTERATIONS  
| DESIGN & BUILD

T: 01233 770077

SMARDEN BUSINESS ESTATE, TN27 8QL

[atpalmer.co.uk](http://atpalmer.co.uk)





# LISTED BUILDINGS

## what you can alter without permission

What can you do to a listed building without permission? Find out more about working on listed buildings and the types of work do you need consent for.

**I**t is the responsibility of the owner, their agent and the contractor carrying out the works to ensure that the necessary consents for the work have been obtained and it is for the Local Planning Authority to decide who to prosecute in their absence.

Anyone wishing to make alterations to either the exterior or interior of a listed building must obtain Listed Building Consent “LBC”) – even if normal planning permission is not needed – if the change is likely to alter the building’s special architectural or historic character. There are circumstances when LBC is not required, for instance reinstating original features such

as sash windows or cornices, but it is the local Conservation Officer who decides the circumstances and not the building owner (usually you do need listed building consent for reinstating original features, if they are missing at the time, but of course consent is usually given).

### REPAIRS

You might think that just fixing what is broken isn’t making any significant changes and might even be helping to preserve the property.

Minor repairs such as those that do not affect the character of the property by a noticeable

amount are acceptable. Just replacing a faulty fixture in your bathroom or kitchen shouldn't land you in hot water, but there is a caveat. Often any such small repair work must be done with like-for-like materials. This is to keep in line with the properties historical and architectural authenticity.

If you need to conduct more extensive repairs, it is best to seek advice as your Local Authority may require you to use specific materials or inspect the damage themselves.

## INTERNAL ALTERATIONS

Alterations made to a Grade II property require written consent. This goes for both internal and external alterations, cosmetic or otherwise. Just because passers-by can't see any changes you may have made doesn't make those changes legal if you don't get permission for them. This goes for things like double glazing as well as any alteration that would require walls to be taken down or have their insides exposed.

## WINDOW REGULATIONS

Windows are a common point of contention among Grade II homeowners. It is an unfortunate fact that homes with historical significance are quite old, and tend not to meet modern standards when it comes to energy efficiency and insulation.

So it comes as no surprise that people often inquire about getting double glazing on their windows only to find it restricted. Written consent is required for any such alterations to windows, especially when stained glass windows are concerned.

Double glazing and other such window modifications or replacements can significantly alter a house's look and feel, interfering with the property's authenticity.



So while it's not impossible to get permission for alterations to windows, the regulations make it difficult to get permission for from your Local Authority. Bear in mind that secondary glazing, which often, although not always, can be fitted without listed building consent.

## WHAT IS UNAUTHORISED WORK?

If you alter a listed property that you own without consent, either knowingly or unknowingly, you are performing unauthorised work. It's not just work you do yourself that counts as unauthorised works either. If you hire a tradesperson or builder to undertake work on your listed property and leave it to them to apply for written consent, you may find yourself unpleasantly surprised when the work is done, and you find out that they forgot to get consent.

As the person who instructed the work to be carried out, you are responsible for obtaining permission and liable if work is done without it.

Unauthorised work is something you can inherit when you buy a listed house. If the previous inhabitants had unauthorised work done and it's not discovered until you moved in, you may be held responsible for enforcement action and required to fix it out of pocket. Be sure to check the property you are buying before or as soon as you move in to avoid such a scenario. In extreme cases, the courts have the ability to hand down a prison sentence, since carrying out of unauthorised alterations is a criminal offence, although this is unusual.

## CONSEQUENCES

When you own a listed property, the last thing you want is a listed building enforcement notice. This is the weakest slap on the wrist punishment your Local Authority may subject you to if you perform unauthorised work.

It allows them to mitigate or reverse any damage your alterations may have had on the property features. Not only will you have to pay for the restoration costs, but you will also likely have to pay a fine. There is no limit on the amount they can fine you for this offence.

If you are in the middle of performing work without planning permission and it is found out, your Local Authority may give you a stop notice. If you get one of these and ignore it, you have committed another crime on top of the first one. Since in England, performing unauthorised work on a listed building is a criminal offence. In a worst-case scenario, you might be facing up to two years in prison for the crime alongside hefty fines.

When considering what constitutes unlawful work, there are some cases where performing it may be more or less justified. One such case is in the needs of health and safety.

There are cases to be made for unauthorised

work to be performed on a listed property if they are in the interest of immediate health and safety concerns. In such cases, the owner must explain why such alterations were necessary and that they were the minimum essential changes to solve the problem with every care taken to preserve the property's historical value. If you have to carry out work as a result of 'immediate health and safety concerns'. Then it is important to notify the council of what you're doing before, or as you go ahead with the works. It should be remembered that the avoidance of danger to the public can be achieved in number of ways, not necessarily involving demolition and risk can also be averted by effectively excluding the public from the area of danger by adequate fencing, which then allows a more considered approach to the resolution of the problem.

## HOW TO PROTECT YOURSELF

There are a few steps you can take to minimise the risks associated with buying a listed building. Firstly, make sure you get a full building survey. In addition to giving you a detailed insight into the condition and structural integrity of the property, this will also identify any repairs that have been made to the property and any works that have been carried out so you can confirm they have the necessary consents.

While your solicitor will formally ask about alterations in the questions to the vendor form, it's also worth speaking to the current owners informally. They may not realise that something as minor as changing a window could breach regulations, so don't be afraid to ask questions.

If you're happy that all the necessary checks have been carried out, remember to take out comprehensive listed building home insurance in case issues arise further down the line.





Tel: 01227 770149 • Mobile: 07488 354005

info@upandoutplatforms.co.uk

upandoutplatforms.co.uk

- IPAF Operated & self hire
- Flexible hire starting from half-day operated
- Tracked platforms with low ground pressure
- Narrow access through standard garden gates (795mm wide)
- Scaffold free approach
- 5 star Google reviews



**ASH**  
SCAFFOLDING LTD

## Conservation Scaffolding Specialists



Smarden Business Estate, Smarden, Ashford TN27 8QL

Tel: 01233 770373 email: info@ashscaffoldingltd.co.uk

www.ashscaffoldingltd.co.uk

# RESTORATION & CONSERVATION

## SERVICES

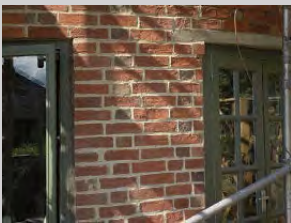
- Lime mortar pointing
- Brick and stone replacement
- Structural crack repairs & remedial wall ties
- Natural damp proofing
- Professional brick and stone cleaning
- Render removal to allow masonry to breathe



## ABOUT US

Prestige Brickwork is a Canterbury based restoration company that specialises in the conservation of period properties throughout Kent. We offer all types of expert brickwork repairs and repointing. We are specialists in working with lime mortar.

All of our staff members are fully committed to providing you with a stress free service. Our tradesmen are professional and are experts in bringing the beauty of your home back to life.



**Tel: 01227 908563 or 07954 409840**

[www.prestigebrickwork.co.uk](http://www.prestigebrickwork.co.uk)

email: [prestigebrickworkkent@gmail.com](mailto:prestigebrickworkkent@gmail.com)



A reputation built on quality  
craftsmanship and service

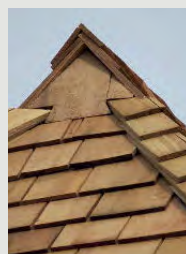
*Karl  
Terry*

Roofing Contractors



Kent Peg Tiling & Listed Building Specialists.  
Conservation and renovation specialists.  
High quality work by experienced craftsman.  
National Award Winning Company.

01797 270 268 | [kentpegs.com](http://kentpegs.com)







- Ecclesiastical work
- Flint work
- Heritage brickwork
- Lime pointing/render
- Fully insured
- New builds & extensions
- All work quoted for
- Traditionally trained craftsmen

**Tel: 07856 266795**

**e-mail: [conservation-construction@outlook.com](mailto:conservation-construction@outlook.com)**



**01795 521650**

60 London Road

Teynham

nr. Sittingbourne

Kent ME9 9QM



**WINDOWS | DOORS | STAIRCASES | CONSERVATORIES & MUCH MORE**

**[www.fjwilliamsjoinery.co.uk](http://www.fjwilliamsjoinery.co.uk)**

**[info@fjwilliamsjoinery.co.uk](mailto:info@fjwilliamsjoinery.co.uk)**



## GEORGIAN BRICKWORK

[www.georgianbrickwork.co.uk](http://www.georgianbrickwork.co.uk)

*conserving your heritage brickwork for the future*

All aspects of heritage brickwork undertaken, including lime mortar pointing, tuck pointing, gauged arches, and carved brickwork. Clients include homeowners and also contractors requiring a specialist service.

**Professional Development Sessions**  
available to experienced heritage bricklayers

For more information please contact

Charles Reilly

e: [info@georgianbrickwork.co.uk](mailto:info@georgianbrickwork.co.uk)

m: 07732 975 349

w: [www.georgianbrickwork.co.uk](http://www.georgianbrickwork.co.uk)



## PJ ARCHITECTURE

Harbour Offices, Whitstable CT5 1AB

**01227 770470**

[enq@peterjacksonarchitects.co.uk](mailto:enq@peterjacksonarchitects.co.uk)

## NON FERROUS METAL RECYCLING & WASTE HANDLING

### **JOHN BUTCHER BROS** **TEL: 01227 713850**

- Fast efficient turnaround
- Immediate cleared funds via BACS
- Collections available for larger quantities

### **CALL FOR CURRENT PRICES**

Open to the public & trade

Mon – Fri, 8am - 5pm

Sat, 8am - 12 noon

[www.johnbutcherbros.co.uk](http://www.johnbutcherbros.co.uk)

[info@johnbutcherbros.co.uk](mailto:info@johnbutcherbros.co.uk)



**We pay competitive prices for  
all the following grades:**

- Copper • Brass
- Lead • Copper tanks
- Aluminium • Cables
- Stainless steel
- Silver • Gold



Unit 12, Canterbury Ind Park, Island Road, Hersden, Canterbury CT3 4HQ

# Paul Terry Joinery

[www.paulterryjoinery.com](http://www.paulterryjoinery.com)



QUALITY MATERIALS  
AND WORKMANSHIP



TRADITIONAL  
JOINERY SPECIALIST



CUSTOMISED TO YOUR  
EXACT REQUIREMENTS

Phone: 07725 306683 Email: [joinery12@icloud.com](mailto:joinery12@icloud.com)

Unit 27, Birnam Business Centre, Hammill Road, Woodnesborough, Sandwich CT13 0PR

**DOLMEN**

**CONSERVATION  
& JOINERY**

BESPOKE ARCHITECTURAL JOINERY  
ENGLISH VERNACULAR CARPENTRY | HANDMADE KITCHENS  
PERIOD DOORS AND WINDOWS | SUSTAINABLE TIMBER SOURCING

[dolmenjoinery.co.uk](http://dolmenjoinery.co.uk) | [projects@dolmenjoinery.co.uk](mailto:projects@dolmenjoinery.co.uk) | 01708 732 813 | 01233 746 301 | [@dolmenconservation](https://www.instagram.com/dolmenconservation)  
WOODCHURCH - KENT





## HERITAGE BRICKWORK RESTORATION LTD

‡ Lime Mortar Specialists ‡

‡ Historic Brickwork Repairs ‡  
& Repointing

‡ Gauged Brickwork ‡

Tel: 01227 264 737 Mob: 07866 388 962

info@heritagebrickworkrestoration.co.uk

[www.heritagebrickworkrestoration.co.uk](http://www.heritagebrickworkrestoration.co.uk)

## Jane Elizabeth Architects



Planning Permission - Building Regulations -  
Listed Buildings - Barn Conversions -  
Extensions - Renovations

### Contact Us

Tel: 01622 884373 Mobile: 07715 860787

[janeelizabetharchitects@gmail.com](mailto:janeelizabetharchitects@gmail.com)

[www.janeelizabetharchitects.co.uk](http://www.janeelizabetharchitects.co.uk)



**We are the UK's leading  
restorer and repairer of  
traditional, distinctive  
oast cowl & kiln roofs.**

New cowl construction. Painting  
& cleaning. Repair & maintenance.  
Also specialising in Kent peg tile  
roof repairs and kiln tile repairs.

Trusted over four family  
generations by royalty, businesses  
& homeowners alike.




Book a no-obligation visit  
01622 725 898 / 07973 332 790  
[www.dudeandarnette.co.uk](http://www.dudeandarnette.co.uk)



**DUDE &  
ARNETTE**  
OAST COWL RESTORATION



# Oast owners



# Supporting communities in Kent since 1781.

With offices across Kent and London,  
we provide specialist legal services for  
individuals and businesses in the Southeast.

- + Contracts & Transactions
- + Conveyancing
- + Employment
- + Family
- + Licensing
- + Probate
- + Property
- + Tax & Estate Planning
- + Wills

To find out how we can help,  
call us on **01622 698000**  
or email [enquiries@wmlaw.uk](mailto:enquiries@wmlaw.uk)

[whitehead-monckton.co.uk](http://whitehead-monckton.co.uk)



**WM** Whitehead  
Monckton

Whitehead Monckton Limited (no. 08366029), registered in England & Wales.  
Registered office 5 Eclipse Park, Maidstone, Kent, ME14 3EN. Authorised  
and regulated by the Solicitors Regulation Authority under no. 608279.

# The significance of having a will

In today's fast-paced world, it's easy to put off important tasks, and writing a will is often one of them. However, having a will is crucial for ensuring your wishes are carried out after your death and providing peace of mind to your loved ones.



**I**n this comprehensive guide, we'll explore the importance of having a will, and the steps to take in order to secure your legacy.

## Why do you need a will?

A will is a legal document that outlines how your estate, including your property, money, and possessions, should be distributed after your death. Even if you don't consider yourself wealthy, having a will ensures that your wishes are respected, and your loved ones are taken care of. Without a will, your estate will be distributed according to the intestacy rules, which may not align with your desires.

## Benefits of writing a will

Writing a will offers several benefits beyond determining the distribution of your assets. Firstly, if you live with a partner without being

married or in a civil partnership, they won't automatically inherit your estate without a will. Secondly, if you have children, a will allows you to nominate a legal guardian who will care for them in the event of your passing. Additionally, a will enables you to express your funeral wishes and can help mitigate inheritance tax.

## Consequences of Dying Without a Will

Dying without a will, also known as dying intestate, can lead to complications and unintended consequences. The rules of intestacy determine how your estate will be distributed, and these rules may not align with your preferences. For example, if you have a spouse and children, your spouse may only receive a portion of your estate, with the remainder divided among your children. In some cases, if you have no surviving relatives, your estate may be claimed by the Crown.



## **The will-writing process – gathering information**

Before your appointment, it's helpful to gather relevant information that will assist in the will-writing process. This includes details about your assets, such as property, savings, investments, and valuable possessions. You should also consider any debts or liabilities, such as mortgages or loans. Additionally, think about who you would like to appoint as the executor of your will, the person responsible for carrying out your wishes. We will send you a link to an online questionnaire for you to complete, or we can provide a paper copy if you prefer.

Consultation with a legally qualified Adviser During your appointment, we will guide you through the will-writing process. We will ask you a series of questions to understand your wishes and ensure your will accurately reflects your intentions. We will provide advice on legal matters, including inheritance tax implications and any specific considerations based on your unique circumstances. After the consultation, we will draft your will.

## **Review and signing**

Once we have drafted your will, we will provide you with an opportunity to review it thoroughly. It's crucial to carefully read through the document to ensure all your wishes are accurately represented. If any changes or adjustments are necessary, discuss them with your adviser. Once you are satisfied with the final version, you will sign the will in the presence of two witnesses, who will also sign to validate the document.

## **Planning beyond a will – Power of Attorney**

While a will is an essential component of estate planning, it's also important to consider other

aspects of protecting your interests and wishes. One such measure is establishing a lasting power of attorney. This legal document allows you to appoint a trusted individual to make financial and personal decisions on your behalf if you become incapacitated. By appointing someone you trust as your attorney, you can have peace of mind knowing that your affairs will be handled according to your wishes.

## **Periodic review and updates**

Creating a will is not a one-time task; it requires periodic review and updates. Life circumstances change, and it's essential to ensure that your will accurately reflects your current wishes and circumstances. Significant events such as marriage, divorce, birth, or death in the family may necessitate modifications to your will. It's advisable to review your will regularly and consult with us to make any necessary updates to ensure your legacy is preserved. At Whitehead Monckton we offer our Legal Review Programme which is designed to prompt clients to update their succession planning arrangements when required. Please contact us if you would like more information about this.

## **Conclusion**

Writing a will is a crucial step in securing your legacy and ensuring your wishes are respected. You not only protect your loved ones, but also have the chance to leave a lasting impact by supporting charitable causes.

**If you require any advice or assistance, contact us to speak with a member of the team.**  
[www.whitehead-monckton.co.uk](http://www.whitehead-monckton.co.uk)



# CONSERVATION NEWS

PERIOD HOMES • RENOVATION • INTERIORS • GARDENS • FOOD

## CONSERVATION NEWS

West Kent & The Weald

Spring 2023 • Complimentary

A warm welcome  
MAKING THE MOST OF YOUR HALLWAY



Creating a  
BOOT ROOM

PERIOD HOMES • RENOVATION • INTERIORS • GARDENS • FOOD

## CONSERVATION NEWS

Kent

Autumn 2023 • Complimentary

The versatility of  
KITCHEN ISLANDS  
AUTUMN  
decorating trends



PERIOD HOMES • RENOVATION • INTERIORS • GARDENS • FOOD

## CONSERVATION NEWS

West Kent & The Weald

Summer 2023 • Complimentary

GORGEOUS  
Garden buildings  
Bespoke design  
YOUR UNIQUE HOME



PERIOD HOMES • RENOVATION • INTERIORS • GARDENS • FOOD

## CONSERVATION NEWS

Kent

Winter 2022 • Complimentary

Choosing  
a bath tub  
for your period home



Creating a  
FOCAL POINT

PERIOD HOMES • RENOVATION • INTERIORS • GARDENS • FOOD

## NEVER MISS A COPY

Take out a subscription and we'll deliver every issue direct to your door.

Visit [conservationnews.co.uk](https://www.conservationnews.co.uk)



# The Old Rectory, Wickhambreaux

A sensational Grade II\* listed Queen Anne village house,  
with exceptional leisure facilities and cottage.

The Old Rectory is quintessentially English, and is one of the finest early-18th century houses in East Kent. Built in 1713 for the then rector of Wickhambreaux, it is a much admired and very fine example of Queen Anne architecture. With symmetrical facades on both the front and rear elevations, the house exudes significant character and has been stylishly and extensively updated in recent years by the current owners.

A short flight of stone steps with iron handrails rises to a very handsome door case

with an ornate fanlight over. The door opens to the reception hall, a beautiful panelled room flooded with light from a pair of tall sash windows. A wide archway leads through to the staircase hall with an elegant, easy rising 18th century staircase, dominated by a full height sash window.

Off the hall to the right is the delightfully sunny study and to the rear of the house is the elegant panelled drawing room, which overlooks the rear garden. A beautiful fireplace is a focal point, and a door with external steps leads out







to the garden. Adjoining the drawing room is the cosy sitting room with two deep sash windows looking out to the rear garden.

A door off the staircase hall leads to the rear hall, where an elegant secondary staircase serves both the upper floors and the lower ground floor. The lower ground floor is, in the main, given over to a large family kitchen/dining room with an adjoining range of ancillary rooms, including a utility room, a laundry room, a pantry, a store room and a wine cellar.

The principal bedroom is situated to the rear and has lovely views over the garden. Its en-suite bathroom is a spacious room, newly fitted with a walk-in shower cubicle, wash basin, WC and a free-standing bath. Across the landing are two guest bedrooms, one with an en-suite bathroom.

A door opens to the rear staircase landing, from where the secondary stairs elegantly lead to the top floor where there are five further bedrooms and a family bathroom.

### **The Cottage**

The attractive and well-appointed period cottage comprises a sitting room, a neatly fitted kitchen, ground floor bathroom and a spacious first floor bedroom. Adjacent to the cottage is a garage, with a separate large workshop and bike store.

### **Outside**

The house is approached by pedestrian access through a wrought iron gate into a formal front garden or, for vehicular access, through electric oak gates, via the gravel driveway to a parking and turning area immediately in front of the garage and cottage.

The stylish swimming pool is tucked away behind the cottage/garage, and has the benefit of its own outdoor Roshults kitchen with fridge and dual BBQ. Beyond is the tennis court, which has a sand-based astro, suitable for a variety of sports.

The partly walled garden has been carefully and sensitively landscaped. As well as the formal lawn, there are terraces beside the house providing a variety of entertaining spaces.

The vegetable garden is located at the far end of the garden, sheltered behind an abundance of lined pleached pear and apple trees which form the orchard, along with grapevines in the Victorian greenhouse.

## **The details**

### **The Old Rectory:**

Reception hall | Drawing room | Sitting room | Dining room | Study | Cloakroom | Kitchen/dining room | Utility room | Pantry | Laundry room | Wine cellar | Store | Principal bedroom with en-suite bathroom | 7 Further bedrooms | 2 Further Bathrooms | Garage | Wood shed | Workshop | Swimming pool | Gym and changing rooms | Tennis court | Greenhouse | EPC rating TBC

### **The Cottage:**

Sitting room | Kitchen | Bedroom | Bathroom | EPC rating TBC  
About 1.027 acres  
Guide price: £3.5 million  
Viewing by appointment only  
Strutt & Parker, 2 St. Margarets St,  
Canterbury CT1 2SL Tel: 01227 473700  
[www.struttandparker.com](http://www.struttandparker.com)





## Halls Oast, Lenham

A perfect example of a typical Kent oast house with wonderful views

**H**alls Oast was originally part of the neighbouring farm and subsequently purchased and separated. Time and consideration was taken to restore the property as it offers the most private and best located plot of the small hamlet of Old Shelve. It was extensively restored from a shell to what you see now, a characterful yet practical home with beautiful features such as two large roundels with working cows, exposed brick and timbers. Garaging, office and storage sheds, along with a large pole barn offering further potential. On arriving you are greeted by an electric gated

shingle driveway that leads you to a large parking area. The manicured gardens sweep round the side and rear of the oast with hidden seating areas, an extensive flagstone sun patio area, dining areas along with a path which overlooks neighbouring farmland with far-reaching views to the North Downs.

On entering the oast you arrive at an attractive entrance hall and are immediately struck by the hue of the exposed brick and quarry tiled floor. A 30' long living/dining room with central woodburner leads away from the left with a sitting room roundel to your right, a





utility/cloakroom and through to a charming kitchen/breakfast room roundel. To the first floor there is a spacious landing, a principal bedroom and guest bedroom, both with en-suite bathrooms, two further generous roundel bedrooms and a shower room.

One of the great features of this property is the detached annexe. This fully heated, insulated and double glazed cabin measures 60ft in length and is a home in itself.

It features a beautiful open-plan living/dining room/kitchen with feature woodburner, main bedroom with en-suite dressing and shower room, two further bedrooms and a shower room.

Outside there is a lovely decking area overlooking the countryside and a lawned garden to the rear.

## The details

Beautiful detached twin roundel oast house in tucked away location | detached three bedroom annexe | 2.15 acre plot principally laid to grass | stunning views across farmland to the North Downs | Flexible & spacious accommodation | electric gated driveway | double garage with workshop | detached office/workroom | old Pole Barn with huge potential  
Guide price: £1,395,000

Viewing by appointment only  
Saddlers, 1-3 Old Ashford Road,  
Charing, Kent TN27 0JG  
Tel: 01233 713127

email: [property@saddlersresidential.co.uk](mailto:property@saddlersresidential.co.uk)  
[www.saddlersresidential.co.uk](http://www.saddlersresidential.co.uk)



SMALL BATCH LONDON DRY

# WHITSTABLE HARBOUR GIN

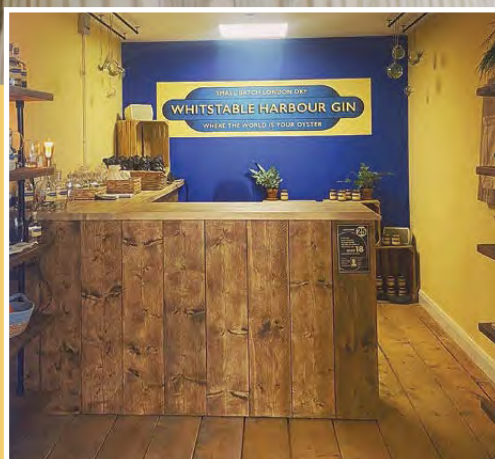
WHERE THE WORLD IS YOUR OYSTER



Come and see us at our  
Whitstable Harbour Gin Store  
- Unit 2 South Quay Shed -  
Whitstable CT5 1AB

OUR PREMIER BATCH DISTILLED JUNE 21ST

ONLINE SHOP:  
[WHITSTABLEHARBOURGIN.CO.UK](http://WHITSTABLEHARBOURGIN.CO.UK)





*The best of Kent's food and drink experiences including restaurants, bars, cafés, pubs, farm shops, delis, butchers and markets, as well as recipes and local produce.*





**Sunday Sharing Roast**



**All desserts homemade**



**Newly refurbished rooms**



**New menu available**

The Royal Oak in Hawkhurst is a traditional country pub. Our food features classic dishes made with locally sourced ingredients, highlighting the flavours and freshness of the region. The restaurant's commitment to supporting local businesses is evident in every dish, from the tender meat sourced from Park Farm Butchers to the seasonal vegetables grown in the surrounding countryside. Our drinks range is extensive and whether it's business or pleasure our 11 ensuite bedrooms await any weary traveller or local friend.

**20% Off  
Food  
Bill**

Valid Monday to Saturday with a booking. Applicable for food purchases only. Not transferrable for cash. Cannot be combined with any other offer. Not valid for parties of 15 or more. Limit, one voucher per table.

**Royal Oak Rye Road, Hawkhurst, Cranbrook TN18 4EP**  
**01580 755782 [www.royaloakhawkhurst.com](http://www.royaloakhawkhurst.com)**





**OPENING TIMES**  
Lunch: Tue - Sun 12 noon - 2.30pm  
Evenings: Tue - Mon 6pm - 9.30pm



**COME AND DINE WITH  
US AT OUR NEWLY  
EXTENDED BAR AND  
RESTAURANT**



Birdies is one of Whitstable's oldest family run restaurants, serving brilliant locally caught fresh fish features alongside great French classics.

41 Harbour Street, Whitstable CT5 1AH Tel: 01227 265337  
[www.birdiesrestaurant.co.uk](http://www.birdiesrestaurant.co.uk)



*"This recipe was inspired by a fantastic Indian restaurant I went to where it was served as a starter. The taste was amazing (if a little spicier than my version). This one has all the flavour, but without the heat. If you like the sound of the spicy version though, sprinkle ½ teaspoon of cayenne pepper onto the lamb cutlets before cooking and add 1-2 jalapenos to the pesto before blending."*



# KITCHEN SANCTUARY

Making dinner from scratch can feel like a chore – often half the battle is trying to find something that's quick, nutritious and, most importantly, delicious. But delicious doesn't have to mean demanding. After their debut book, Sunday Times bestseller *It's All About Dinner*, Kitchen Sanctuary is back – this time focusing on quick and easy meals, all made in 30 minutes or less!

**SERVES**  
**4**

## YOU WILL NEED

12 lamb cutlets (chops)  
4 tablespoons oil  
½ teaspoon salt  
½ teaspoon ground black pepper  
2 teaspoons dried oregano  
2 teaspoons paprika  
1 teaspoon garlic powder  
1 batch Coriander pesto

### *Coriander chilli pesto*

50g (1¾oz) bunch of fresh coriander, leaves picked and longer stalks removed

1–2 jalapeños sliced  
2 garlic cloves, peeled  
zest and juice of ½ lime  
3 tablespoons pine nuts  
30g (1/3 cup) grated Parmesan  
¼ teaspoon sea salt, plus extra to taste if needed  
¼ teaspoon ground black pepper  
90ml olive oil

## GRIDDLED LAMB CUTLETS WITH CORIANDER PESTO

### METHOD

For the lamb, heat a large griddle pan (grill pan) over a high heat until hot. Brush the lamb cutlets with the oil, then sprinkle all over with the salt, pepper, oregano, paprika and garlic powder.

Place on the griddle and cook for 2–3 minutes on each side until well browned. You may need to work in two batches, depending on the size of your pan. If you do, then keep the first batch warm by placing on a board or tray and cover with foil and a tea towel.

Once all the lamb cutlets are cooked, place on a board and cover with foil and a tea towel. Allow to rest for 3 minutes before serving, drizzled with coriander pesto. I like to serve this with steamed new potatoes and peas.

### *Coriander chilli pesto*

Add the coriander, jalapeños, garlic, lime zest and juice, pine nuts, Parmesan, salt and pepper to a food processor and pulse for about 10 seconds to break up the garlic and pine nuts.

Turn the food processor back on and pour in the oil in a steady stream, which should take about 10 seconds. Check for consistency – if you like your pesto a little chunky, it's ready to go. If you like it smoother, whizz for another 10–20 seconds. Taste the pesto and add more lightly crushed sea salt if needed.



### *Nicky's pro tips*

As tasty as they are, lamb cutlets are pretty small (about two bites per cutlet), so if you want more meat, add an extra cutlet or two per person.



SERVES  
4

## LEMON FETA BAKED BASA

### YOU WILL NEED

200g (7oz) cherry tomatoes, sliced in half (multicoloured tomatoes add a nice splash of colour)

1 tablespoon cornflour (cornstarch)

2 garlic cloves, peeled and minced 120ml (½ cup) chicken stock

3 tablespoons finely chopped fresh flat-leaf parsley, plus extra to serve

3 tablespoons olive oil

1 lemon, thinly sliced

2 tablespoons capers, drained 200g (7oz) feta, crumbled

4 skinless, boneless basa fillets 1 teaspoon paprika

1 teaspoon dried oregano

½ teaspoon chilli (red pepper) flakes

½ teaspoon garlic powder

½ teaspoon salt

½ teaspoon ground black pepper, plus extra to serve

### METHOD

To a large baking dish, add the sliced cherry tomatoes. Sprinkle on the cornflour and toss together, to coat the tomatoes. Add the garlic, stock, parsley and 2 tablespoons of the olive oil and toss everything together.

Add the sliced lemon, capers and feta to the dish and place the basa fillets on top.

Mix together the paprika, oregano, chilli flakes, garlic powder, salt and pepper and sprinkle on the basa fillets.

Drizzle the fish with the remaining tablespoon of oil, then bake in the oven for 15–20 minutes until the fish is cooked through and the tomatoes are tender.

Serve with potatoes, rice or pasta, topped with fresh parsley and black pepper.



### Nicky's pro tips

You can replace the basa with other quick-cook thin fillets of fish, such as sole, sea bream or sea bass.

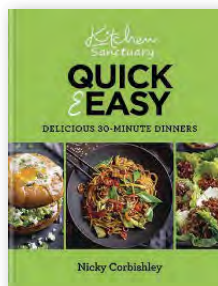
### WIN A COPY OF KITCHEN SANCTUARY QUICK & EASY

For your chance to win a copy of Kitchen Sanctuary, Quick & Easy, please email your name, address and telephone number to:

**dawn@conservationnews.co.uk**

Closing date: 6th May 2024

*This is an extract from Kitchen Sanctuary Quick & Easy: Delicious 30-minute Dinners by Nicky Corbishley, RRP £22, Published by Kyle Books, Hardback, out 29th February. Photography by Nicky Corbishley.*





*"I love a recipe that calls for adding everything to a dish and leaving it to cook with no intervention. This simple fish dish is packed with flavour. My serving suggestions are for potatoes, rice or pasta, but I've got to admit, sometimes I don't even bother cooking a side dish and serve with a big wedge of crusty bread for dipping in the sauce instead.."*



Micro eaterie & exclusive deli with inside & outside seating offering an extensive menu. Delicious homemade recipes, serving breakfast, brunch & lunch. Takeaway also available, alongside private catering events.

## GILBERTS CAFE & DELI

19 Oxford Street, Whitstable CT5 1DB

Tel: 01227 273189

[gilbertsofwhitstable](https://www.gilbertsofwhitstable.co.uk)



## The 2 BLACKSMITH'S Arms

17th century village pub, near the Pilgrims Way, set in rolling downland countryside. An inglenook log fire gives a warm welcome in winter. Good quality, locally sourced food served.

No children under 14 allowed in bar or restaurant.

No vegetarian options available.

Wednesday - Saturday, 7pm - 11pm (must pre-book for food)

Sunday 4pm - 11pm. No lunches being served at present.

The Street, Wormshill, Sittingbourne ME9 0TU

Tel: 01622 884386

## Bull Green Farm

QUALITY FARM PRODUCE

We are a family-run farm rearing Dexter cows, sheep and chickens. We believe animals should be able to roam free in the fields and enjoy fresh air and green grass.

We have a nicely stocked shop with fresh eggs daily, home grown veg, and a variety of local products such as Kentish honey, jams, and occasionally freshly baked cakes. We also have a freezer packed with locally made pies and tasty treats.



Bull Green,  
Bethersden TN26 3LB

Tel: 01233 822463

Email: [Shop@BullGreenFarm.co.uk](mailto:Shop@BullGreenFarm.co.uk)







# MACKNADE

## STREET FOOD VILLAGE

### REOPENING FRIDAY 29<sup>TH</sup> MARCH!



*DISHES & DRINKS FROM*  
**KENT'S BEST INDEPENDENT STREET FOOD TRADERS**

*OPENING HOURS & MORE INFO AT [MACKNADE.COM](http://MACKNADE.COM)*

**SELLING ROAD | FAVERSHAM KENT | ME13 8XF**



**@MACKNADE**

**BUY  
FRESH,  
BUY  
LOCAL**



— LOCAL —  
Farmers' Markets



# Support your local farmers' market

For more information and to find out what's in season visit [www.kfma.org.uk](http://www.kfma.org.uk)

## MARCH

### SATURDAY: 2nd

Chatham; Deal; Gravesend;  
Penshurst; Reuthe's Sevenoaks;  
Tunbridge Wells; Wye

### SUNDAY: 3rd

Bearsted; Tunbridge Wells

### TUESDAY: 5th, 12th, 19th & 26th

Capel-le-Ferne; Hildenborough

### WEDNESDAY: 6th, 13th,

20th & 27th Rye

### THURSDAY: 7th, 14th,

21st & 28th

Hastings; Rolvenden; Shipbourne

### SATURDAY: 9th

Bridge; Deal; Gravesend; Hythe;  
Reuthe's Sevenoaks; Sevenoaks;  
Tunbridge Wells

### SUNDAY: 10th

Herne Bay; Lenham; Tonbridge;  
Tunbridge Wells

### SATURDAY: 16th

Deal; Gravesend; Reuthe's  
Sevenoaks; Sevenoaks; Tunbridge  
Wells; Wadhurst; Wye

### SUNDAY: 17th

Aylesford; Folkestone; Rochester;  
Tunbridge Wells; Watlingtonbury

### SATURDAY: 23rd

Bridge; Deal; Gravesend; Hythe;  
Knockholt; Reuthe's Sevenoaks;  
Sevenoaks; Tunbridge Wells;  
Whitstable

### SUNDAY: 24th

Tunbridge Wells

### SUNDAY: 31st

Cliftonville; Tunbridge Wells

## APRIL

### TUESDAY: 2nd, 9th, 16th, 23rd & 30th

Capel-le-Ferne; Hildenborough

### WEDNESDAY: 3rd, 10th, 17th, 24th & 31st Rye

### THURSDAY: 4th, 11th, 18th & 25th

Hastings; Rolvenden; Shipbourne

### SATURDAY: 6th

Chatham; Deal; Gravesend; Kent  
Showground; Penshurst; Reuthe's  
Sevenoaks; Sevenoaks; Tunbridge  
Wells; Wye

### SUNDAY: 7th

Bearsted; Tunbridge Wells

### SATURDAY: 13th

Bridge; Deal; Gravesend; Hythe;  
Reuthe's Sevenoaks; Sevenoaks;  
Tunbridge Wells

### SUNDAY: 14th

Herne Bay; Lenham; Tonbridge;  
Tunbridge Wells

### SATURDAY: 20th

Deal; Dover; Gravesend; Reuthe's  
Sevenoaks; Sevenoaks; Tunbridge  
Wells; Wadhurst; Wye

### SUNDAY: 21st

Aylesford; Folkestone; Rochester;  
Staplehurst; Tunbridge Wells;  
Watlingtonbury

### SATURDAY: 27th

Bridge; Deal; Gravesend; Hythe;  
Reuthe's Sevenoaks; Sevenoaks;  
Tunbridge Wells; Whitstable

### SUNDAY: 28th

Cliftonville; Tunbridge Wells

## MAY

### WEDNESDAY: 1st, 8th, 15th & 22nd Rye

### THURSDAY: 2nd, 9th, 16th, 23rd & 30th

Hastings; Rolvenden;  
Shipbourne

### SATURDAY: 4th

Chatham; Deal; Gravesend;  
Penshurst; Reuthe's Sevenoaks;  
Sevenoaks; Tunbridge Wells; Wye

### SUNDAY: 5th

Bearsted; Tunbridge Wells

### SATURDAY: 11th

Bridge; Deal; Gravesend;  
Hythe; Reuthe's Sevenoaks;  
Sevenoaks; Tunbridge Wells

### SUNDAY: 12th

Herne Bay; Lenham; Tonbridge;  
Tunbridge Wells

### SATURDAY: 18th

Deal; Dover; Gravesend; Reuthe's  
Sevenoaks; Sevenoaks; Tunbridge  
Wells; Wadhurst; Wye

### SUNDAY: 19th

Aylesford; Folkestone; Rochester;  
Staplehurst; Tunbridge Wells;  
Watlingtonbury

### SATURDAY: 25th

Bridge; Deal; Gravesend; Hythe;  
Knockholt; Reuthe's Sevenoaks;  
Sevenoaks; Tunbridge Wells;  
Whitstable

### SUNDAY: 26th

Cliftonville; Tunbridge Food &  
Drink Festival; Tunbridge Wells







**KENT LIFE**  
by Kent on Sunday  
**FOOD & DRINK AWARDS 2016**

**LOWER HARDRES FARM SHOP**  
**WINNER**  
FARM SHOP OF THE YEAR

PRODUCED BY  
**Chocolate**

**PICK YOUR OWN**  
Call for details

- In-house butchery selling chickens, local game, pork, beef and lamb
- Dried fruits, nuts, seasoning and spices
- Home-reared spring lamb
- Fruit, vegetables and salad, sourced as locally as possible
- Cheese and deli products
- Stockist of The Chai Stop finest curries
- Skinners dog food
- Local wines and ciders
- Selection of bedding plants

[www.lowerhardresfarmshop.co.uk](http://www.lowerhardresfarmshop.co.uk) Tel: 01227 700947 email: [info@lowerhardresfarmshop.co.uk](mailto:info@lowerhardresfarmshop.co.uk)  
Lower Hardres Farm, Lower Hardres, Canterbury CT4 5NU

## CHILHAM SHOP

### Farm shop & plant centre

Serving Chilham and the surrounding villages for over 40 years with a wide range of fresh, fruit, vegetables, cut flowers, garden plants as well as a good selection of general groceries, dairy, bakery, frozen foods and much more.

Mon to Sat: 8:30am to 6pm Sun: 9am to 5pm. We also run Chilham Post Office.





# THE OYSTER PEARL

## PUB & RESTAURANT



The Oyster Pearl



RECOMMENDED  
ON RESTAURANT GURU  
2022



restaurantguru.com

*Congratulations to The Oyster Pearl team*  
Andrew Preece, Executive Director



## FOR LOCALLY SOURCED & FRESHLY PREPARED DISHES EVERY DAY

British and Pan-Asian cuisine. Serving high quality and creative dishes.



185 FAVERSHAM ROAD, WHITSTABLE CT5 4BJ • TEL: 01227 272705

[WWW.THEOYSTERPEARLRESTAURANT.COM](http://WWW.THEOYSTERPEARLRESTAURANT.COM)





# THE OLD NEPTUNE

Marine Terrace, Whitstable CT5 1EJ  
01227 272262 • [www.thepubonthebeach.co.uk](http://www.thepubonthebeach.co.uk)



## LIVE MUSIC

March 10th Miles Cookman

March 17th The Irish Rattlaz

(5-8pm - cheap Guinness)

March 24th Gumboots

March 31st Bill, Saxby and the Dan

April 7th Shambolics

April 14th Diane Dunn trio

April 21st Backstreet Bloozers

April 28th Squeeze Gut Alley

May 5th Deep River Blues

May 12th Blue Devils

May 19th Mister Z

May 26th Ivan Allstars

Please refer the website as bands are subject to change. [www.thepubonthebeach.co.uk](http://www.thepubonthebeach.co.uk)

## OPENING HOURS

Mon - Wed: 11.30 - 9.30pm Thurs - Sat: 11.30 - 11pm

Sun: 12 noon - 9pm

Food served all day Saturday & Sunday from 12-4pm

 Mon - Fri 12 noon - 4pm & 5pm - 8.15pm 



NOW OPERATING SELF  
DRIVE BOAT HIRE



## KENTISH LADY HIRE CRUISES

Scenic River Medway boat trips to Allington and Teston

Take in the sights and splendour of the Maidstone stretch of the River Medway from the comfort of the Kentish Lady River Boat. One hour trips or three hour cruises (with lunch/supper) available plus the opportunity to visit Allington castle possibly Kent's best kept secret, with its beautiful gardens, courtyards and Great Hall.

The Kentish Lady is also available for functions, including wedding receptions, birthdays or Champagne gatherings.



Tel: 01622 753740 | Email: [boattrips@kentishlady.co.uk](mailto:boattrips@kentishlady.co.uk) | [www.kentishlady.co.uk](http://www.kentishlady.co.uk)



## THE TUDOR PEACOCK

The Square, Chilham CT4 8BY

[thetudorpeacock.co.uk](http://thetudorpeacock.co.uk)

Tel: 01227 231558



# THE TUDOR PEACOCK

Our wine expert, Rowena Hawtin took a day out to visit The Tudor Peacock, a Kentish wine tasting room, shop and bar in the lovely village of Chilham.

Rowena Hawtin Dip WSET

It was mid-February – one of those days when it was lashing down with rain from dawn until dusk, but that didn't deter me from looking forward to my visit to the fabulous new wine bar that has just opened in the picturesque village of Chilham – deep in the Kent countryside.

I arrived in the village where The Tudor Peacock stands proud in this medieval square which is on the Pilgrim's Way – steeped in history and just 18 minutes by road to Canterbury. The old medieval building used to be a Wealden hall and dates back to the 14th century (built roughly between 1370-1410) and the new wine bar takes its name from The Peacock Antique shop and Tudor Lodge which is where the modern wine shop is situated.

Chilham itself has been described as a 'picture postcard village' with stunning old timber fronted buildings and includes a castle, a tea shop, a church and two pubs – ideal for a day out at any time of the year. I was very keen to find out more about this wine bar which is very much in keeping with the rest of the village architecture, having Tudor wooden fronting and big beams. I had arranged to meet Sasha – one of the duty managers – and her passion and enthusiasm for the project just bubbled over from the first few minutes. As I began my interview, Sasha felt I would get a more comprehensive view of the development by speaking to Greg Taylor as well – one of the owners – and he joined in our conversation via video link.



## How did the Tudor Peacock start as a business?

Greg tells me that back during the covid pandemic he had heard rumours that the Grade II listed building was up for sale and his vision immediately was that it would be absolutely perfect for a wine bar/tasting room right in the heart of this quintessential English village. One of the key ideas about this venture from the start was that it was very much a community project – bringing people together in this beautiful building as a celebration of the old – the history of the building and the village and the new – taste Kentish wines – both from established wineries and smaller, newer ones too. He tells me that the building has undergone extensive renovations – all in keeping with the traditional style of the original building and the surrounding village. Upstairs, it features the ‘Crown Post’ which is a ‘must see’ feature which separates the original Tudor Lodge from the antique shop which used to be there. With the community being at the heart of the project, it is no surprise that 22 out of the 40 investors are from the village of Chilham itself which accounts for a 70% stake in the business; 11 more are based in Kent and even in London and these investors include the subsidiary company of Taittinger – Domaine Evremond.

## What would you say are some of the biggest challenges in opening a wine shop?

Greg tells me that initially there was some objection from some of the locals and one of the main concerns was about noise levels, but after a few modifications, planning permission was granted and renovations went under way. The venue opened in December 2023 and so far the reviews on TripAdvisor are all 5 star, so the future is looking very positive and it is hoped



that the biggest future challenges will only be which wines to select for their shop and tastings.

## What would you say makes your shop unique?

Over to Sasha now – her enthusiasm for Kent wines is just brimming over and she says she can't learn quick enough about 'all things wine'. She goes on to say that the Tudor Peacock is the only wine bar/tasting room that sells all the wines from the Garden of England under one roof and it is ONLY Kent wines. Sasha tells me she has a background in hospitality and she certainly knows a thing or two about making customers feel relaxed and welcome as she glides around the floor telling me about the wines and the features of the building. I was given a grand tour where downstairs chairs and tables are seated in café style – very spacious – and the casement style Tudor windows add to the atmosphere of being taken back in time.



Upstairs, there is a large tasting room which overlooks the square and in the centre is a table that can seat up to 12 people so guests can enjoy their tasting and talk by their wine expert Brian separately from the guests downstairs – perfect. Sasha says that the wine selection together with this unique building create an atmosphere and experience that cannot be found elsewhere in Kent.

#### **How do you decide which wines to stock and feature?**

Sasha says at present, they sell all of the wines from members of the Wine Garden of England which includes Balfour, Biddenden, Chapel Down, Gusbourne, Simpsons, Squerryes and Westwell as well as a few wines from smaller vineyards. However, she tells me that they are very keen to stock a wider range of Kent wines – especially from the smaller, lesser known vineyards. They offer a broad range of tastings from local fizz to wines from the Garden of England, to lesser known vineyards as well as lesser known grape varieties. All tastings can be booked from the website and cost £45 pp which includes some lovely local cheeses and charcuterie – what a fabulous gift idea.

#### **How do you keep up to date with future trends and development?**

They both tell me that they are always in touch with their suppliers who always have their ears to the ground for changes and developments and of course industry events are a great way to meet others in the trade and exchange news, thoughts and ideas. There are also a number of trade publications that have current news and innovations as to what is happening in Kent as well as news of new vineyards which are springing up all the time. Sasha, who



now works here full time, couldn't be happier spending her time going to trade events, visiting new and up-and-coming vineyards, tasting wines, recommending them to the team as well as managing the Tudor Peacock. She says it's her dream job and couldn't be happier.

#### **Are there any plans for future development?**

Sasha says that they may have plans for an oyster bar and at the time of writing they have got an oyster and wine tasting evening this week – the first, I believe, and it sounds like tickets are selling fast. Seating is limited so it's best to book ahead in case of disappointment as the maximum number for tastings is 12 people.

I look forward to returning to the Tudor Peacock and enjoying some of the mouthwatering local wine in this building which has been here for 700 years.

*eat the food you love  
and still lose weight!*



# yes you can with Slimming World

Contact your local Slimming World Consultant and join a friendly and super-supportive group today!

## **WHITSTABLE GROUPS**

### **MONDAY**

**Seasalter**, 5.30pm & 7pm

### **TUESDAY**

**All Saints**, 9am & 10.30am

**Rugby Club**, 4pm, 5.30 pm & 7pm

### **WEDNESDAY**

**Rugby Club**, 4pm, 5.30pm & 7pm

Tel: Kerry, 07813 679145

Tel: Sally, 07778 068769

## **FAVERSHAM GROUPS**

### **TUESDAY**

**Age UK Building**, 4pm, 5.30pm & 7pm

### **THURSDAY**

**United Church**, Preston Street, 7pm

Tel: Sally, 07778 068769

Tel: Suzanne 07769 255616

## **CANTERBURY GROUPS**

### **THURSDAY**

**St Andrews URC**, 5.30 pm

## **SATURDAY**

**Canterbury Academy**, 8.30am & 10am

Tel: Sally, 07778 068769

Tel: Kerry, 07813 679145

## **HERNE BAY GROUPS**

### **MONDAY**

**St Bartholomews Church Hall**,

5.30pm & 7pm

### **TUESDAY**

**St Bartholomews Church Hall**,

9.30am & 11am

### **WEDNESDAY**

**St Mary's Retreat Hall**, 5pm & 6.30pm

**St Peters Church Hall**, Greenhill, 9.30am

### **THURSDAY**

**St Andrews Christian Centre**,

5.30pm & 7pm

Tel: Helen 07450 824828

Tel: Kim 07456 906156

**slimmingworld.co.uk**

*Slimming*<sup>®</sup>  
—WORLD—

touching hearts, changing lives

A stylish & modern kitchen designed to suit you



Hogwood  
— House  
BESPOKE KITCHEN DESIGN

6c Strand Street Sandwich Kent CT13 9DZ | 01304 784378

Email: [info@hogwoodhouse.co.uk](mailto:info@hogwoodhouse.co.uk) | [www.hogwoodhouse.co.uk](http://www.hogwoodhouse.co.uk)