

# CONSERVATION NEWS

Kent

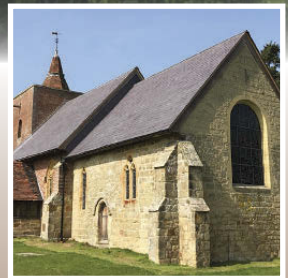
Winter 2024 • Complimentary

## VICTORIAN Bring light into kitchens & bathrooms your period home

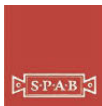


# Ashford & Cranbrook Roofing<sup>TM</sup>

— Experts in heritage roofing —



[www.cranbrookroofing.co.uk](http://www.cranbrookroofing.co.uk)



**Tel: 01580 242925**



# WINTER 2024 Welcome



The winter months can be a struggle: cold dark days and the aftermath of a hectic Christmas can take their toll on our energy levels and mood, so it's important that we fill our lives with wonderful things to lift the spirits while we await the coming of spring.

Here at Conservation News we know just how to find a little light in the dark – quite literally in our feature on bringing light into your home!

We've also got delicious chocolate recipes to tickle the taste buds, home features to help you make your living spaces an oasis of comfort and calm, and gardening features that help you see that nature can be beautiful even when the skies are grey.

So settle in with Conservation News and welcome in the new year with us!

*Dawn*

*Competition winner from our autumn issue:  
Sarah Sutton from Maidstone*



**CONSERVATION NEWS**  
conservationnews.co.uk

*Publisher*  
Conservation News

*Contributors*  
Rowena Hawtin  
Susan Hubbard  
Liz Norton  
Louise Tomlin  
Sarah@thegardencreate

Cover:  
yesteryearhome.com  
*Design*  
Lynn @ Dandelion Design

*Editor/Sales Manager*  
Dawn Long  
Tel: 07725 732535  
dawn@conservationnews.co.uk  
© Conservation News 2024



If you receive your copy of Conservation News by Royal Mail and wish to opt out of our mailing, please send an email to dawn@conservationnews.co.uk

All rights reserved.  
Reproduction of any part of this magazine is not permitted without written permission of the publisher.  
The publisher accepts no responsibility of any loss or damage in respect of any product or service that may be advertised.



# Copperfields

OF WHITSTABLE

Cookshop & Homewares Since 1956

## Inspiration for your kitchen and home



Cookware • Homeware • Gifts • Bakeware • Furniture • Electrical • Cards

[shop@copperfieldsofwhitstable.co.uk](mailto:shop@copperfieldsofwhitstable.co.uk) • [www.copperfieldsofwhitstable.co.uk](http://www.copperfieldsofwhitstable.co.uk)

93 - 95 High Street • Whitstable • Kent • CT5 1AY • Tel: 01227 273519

## OPEN 7 DAYS A WEEK





# WINTER 2024 Contents



- 10 Winter gardening**  
What to do in the garden now
- 15 Hip hip hooray!**  
Enliven the winter garden with rosehips
- 23 Choosing the right kitchen & bathroom**  
for your Victorian home
- 32 Artist profile**  
Charlotte Heather
- 37 Plaster craft**  
Add character to any room with plaster ornamentation
- 43 Eclectic grandeur**  
Identifying the key features of a Victorian house
- 53 A light touch**  
How to bring more light into your period home
- 63 Putting the heart back into Hartridge House**  
A fascinating project by renovation experts AT Palmer
- 100 What's in season**  
Shop fresh & local this winter
- 106 Winter recipes**  
Two recipes from A Cookbook from Winter
- 111 Rowena's wine column**  
Savouring Pinot Noir



## DIRECTORY

AHM Installations  
 Bonmarche  
 Bricks Coffee House  
 Charterwood Mobility  
 Shopmobility  
 Coffee Corner Restaurant  
 Cotswold Outdoor/  
 Runners Need  
 Cotton Traders  
 Edinburgh Woollen Mill  
 FineLine Windows,  
 Doors & Conservatories  
 Gymfinity & Nursery  
 Johnsons Garden Buildings  
 Klass Collection  
 Maidenhead Aquatics  
 Monkhouse Schoolwear  
 Specialists  
 Notcutts Garden Centre  
 Notcutts Home & Gift Shop  
 Pavers  
 Pennies Day Nursery  
 Pure Beauty Essentials  
 Pure Hairdressing  
 Sussex Beds  
 The Butcher of Brogdale

### PURE HAIR & BEAUTY

Get festive ready,  
 book in for a full  
 range of beauty  
 & hair treatments.  
 Lash studio &  
 tanning rooms. Gift  
 Vouchers available.



**BON MARCHE**  
 Ladies clothes and  
 fashion at prices  
 you'll love.



### SUSSEX BEDS

Come and visit our huge  
 showroom today, for expert  
 advice and to try our range of  
 beds and mattresses.



### THE BUTCHER OF BROGDALE

Quality meats and sausages,  
 great value and choice.  
 Christmas orders and offers.



**EDINBURGH WOOLLEN MILL**  
 For all the latest men's and women's  
 knitwear and Countrywear styles.  
 Perfect for festive gifts...Stop by  
 today to see what's in store!



**BRICKS COFFEE HOUSE**  
 Relax and meet friends inside  
 and out. Barista made coffee,  
 teas, frappé, milkshakes,  
 cakes, paninis and more!



### PAVERS

Discover the secret behind the  
 comfort with our range of men's  
 & women's shoes and boots.



### COTTON TRADERS

Shop women's and men's  
 casual clothing and footwear  
 in our brand new store.



**Newnham Court**  
**Shopping Village**

Just off junction 7, of the M20, Maidstone  
 MONDAY TO SATURDAY 9.00am to 5.00pm  
 SUNDAY 10.30am to 4.30pm  
 AMPLE FREE CUSTOMER PARKING





# Festive Inspiration

## at Newnham Court Shopping Village

*For you, your home  
and garden*



### **NOTCUTTS GARDEN CENTRE**

Explore the winter wonderland – lights, trees, decorations. Gifts for family and friends. Luxury foods and drinks. Indoor plants, wildlife and pet food and requisites.



**VISIT OUR WEBSITE**  
[www.newnhamcourt.co.uk](http://www.newnhamcourt.co.uk)







**Old English Tools**

Bench planes, chisels, felling axes, bill hooks, froes, draw shaves, side axes, early garden tools, blacksmith tools, pine boxes. Cast iron log burners and fire grates.

Tools old and new bought for cash. Workshops cleared.

OPEN TUE-SUN 10.30AM - 4PM

Faversham Standard Quay, ME13 7BS

VINTAGE WOODWORKING TOOLS WANTED

Call Phil on 07796 343722 / 07850 292523

[www.countryclobberltd.co.uk](http://www.countryclobberltd.co.uk)

## BJ CESSPOOL SERVICES LTD



**Tel 07796 282864 or 01233 624017**  
**[www.bjcesspool.co.uk](http://www.bjcesspool.co.uk)**

If you want someone who is reliable, careful and efficient to empty your cesspool, septic tank or treatment plant please call Barry or Fiona Spicer.

- Emergency blockages
- Septic tank clearance
- Cesspool maintenance
- Treatment plant maintenance

We can help you with your home, rental properties, caravan parks, hotels and in fact any property that is not on main drains.

A jetting service can also be provided.



# LIFETIME DRIVEWAYS

**AWARD WINNING BLOCK PAVING  
AND RESIN DRIVEWAYS**

**Drives, Patios and Paths**

**0% DEPOSIT - PAYMENT ON COMPLETION**

**BLOCK PAVING - CONCRETE - TARMAC**

**SHINGLE - PATIOS - SLABBING**

**CRAZY PAVING - FENCING**

**NATURAL STONE - BRICKWORK**

**TURF & TOPSOIL**

**ARTIFICIAL GRASS - RESIN BOUND**

**01227 362082 Mob: 07731 316879**

**[www.lifetimedriveways.co.uk](http://www.lifetimedriveways.co.uk)**



**Marshall's**

*Creating Better Landscapes*



**direct line**







## Natural decorations

Bare stems revealed in winter offer a range of ornamental opportunities. Bring some dried seedheads inside, along with bright stems, such as willow and cornus, and some holly for decorations including wreaths or make woodland-inspired foliage pendants or wine glass stem decorations using eucalyptus sprigs.



## PRUNE GRAPES

Early winter is the best time to prune grape vines.

Leave it too late and pruning cuts are likely to bleed sap and weaken the plant.

Lop your vine back to a basic minimal framework. Don't be afraid to be radical: grape vines only fruit on new growth.



# GARDEN NOTES

Even though it's cold outside, winter gardening allows you to keep your garden thriving.

It is an important time to prepare your garden beds and plan for the season ahead to ensure your efforts lead to a productive and beautiful garden all year round.



## WINTER WALKS

Wrap up warm and blow away the cobwebs by taking a stroll in the gardens of Hever Castle where the warm winter bark of the redwood trees glows against the winter sky. Hever's yew topiary looks fantastic with a covering of snow or frost and the majestic hellebores nod gracefully in the winter sun. [hevercastle.co.uk](http://hevercastle.co.uk)



The Bedgebury Pinetum becomes adorned with colourful lights, turning into a magical wonderland by night. There are singing trees, colour changing lights, giant baubles and snowflakes. [forestryengland.uk/bedgebury](http://forestryengland.uk/bedgebury)





## Winterise the greenhouse

Don't forget to winterise the greenhouse. Make sure plants stay healthy and pest-free, keep harvesting winter salads and watering and feeding overwintering citrus plants when needed. If you can heat your greenhouse, do so, either with an electric warmer or a simple paraffin one. If your greenhouse is unheated, wrap plants in a frost protection blanket or bubble wrap during severe cold snaps, making sure you remove the covering when the temperature rises to prevent rotting.

## Plants for winter colour

**Camellia 'Yuletide'** – a bushy, evergreen shrub covered in polished foliage and has brilliant red flowers.



**Holly 'Argentea marginata'** – a cultivar producing abundant red berries. Evergreen hollies are easy to grow, succeeding on most soils. Best planted as young container plants any time of year. They respond well to pruning, making them excellent subjects for topiary and training as standards.



## What to do in the garden now

- During mild winters, you can still plant fruit trees, shade trees and flowering trees.
- When temperatures are below freezing, plant new evergreens, rose bushes and shrubs.
- Prune shrubs and deciduous shade trees.
- Keep up with raking.
- Put a compost pile on top of your garden to protect bulbs and perennial plants from frost.
- Spread out a layer of mulch over your garden.
- Do maintenance on your garden tools.
- Think of the plants that you're going to grow next year, and sketch out plans.

## Grow it, cook it, eat

Winter doesn't mean it's the end of the growing season. If you've really got into growing your own fruits and vegetables, with all their environmental and health benefits, and are looking for kitchen garden ideas that extend into winter, there are many delicious crops that flourish in the colder months. Carrots are just one example and make a perfect side dish to your Sunday roast.



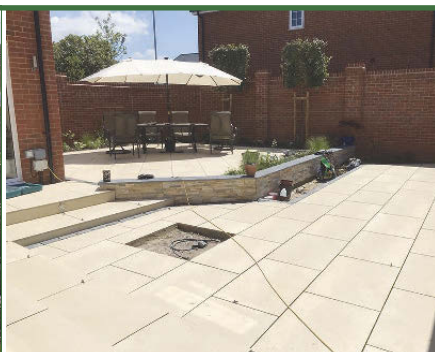


## LANDSCAPING SERVICES

We specialise in design and installation and are happy to be able to offer the following services:

**COMPLETE GARDEN DESIGN:** Patios and decking, gazebos and water features, turfing, fencing, electric gates and astroturf.

**GROUNDWORK:** All demolition work, footings, oversights, extensions, drop kerbs, drainage and civil engineering



## CONTACT US

Tel: 01227 750191

Mobile: 07759 546838

email: [ablelandscapes@btinternet.com](mailto:ablelandscapes@btinternet.com)

[www.ablelandscapes.com](http://www.ablelandscapes.com)



**ABLE**  
LANDSCAPES

## Constructed and resurfaced in Kent, Sussex and Surrey



Please call  
Martin for free  
advice and  
quotations

Tel: 01424

892265

07831 643835

[www.martingurr.co.uk](http://www.martingurr.co.uk)



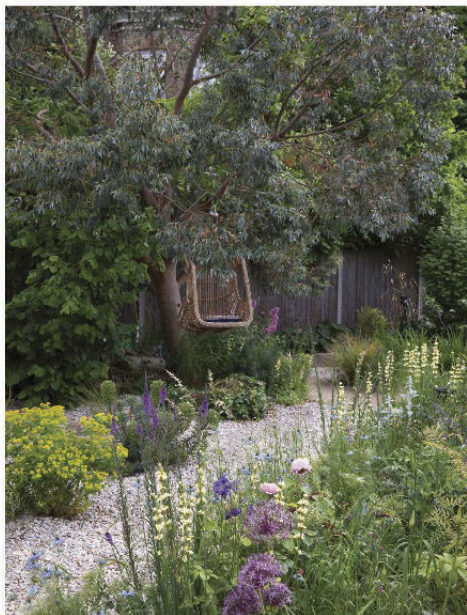


## COUNTRY CLOTHING AND ACCESSORIES

Come and visit us in store for a warm, friendly welcome,  
stocking all your needs for outdoor pursuits

Our store is open 5 days a week visit us at  
Ashford Road, Badlesmere, Kent ME13 0NX  
Wednesday - Sunday 10am - 4pm | 01233 742700  
[www.inthecountrykent.co.uk](http://www.inthecountrykent.co.uk)





THE GARDEN  
CREATIVE

GARDENS FOR PEOPLE & WILDLIFE by Sarah  
thegardencreative.com @thegardencreate

07725055701

## Oak firewood based in Kent

We have been producing oak firewood for over 6 decades. We have a comprehensive range of options for all domestic and commercial heating needs. We supply logs, offcuts and kindling for a verity of applications including open fires, wood burners, boilers and inglenook fireplaces.



As our range all comes as standard in kiln-dried, you can be sure that you are getting the most out of the wood you're burning:

- 4m2 & 2m2 loads
- Cleaner burn
- Better for the environment
- Longer/hotter burn time

**Call us on 01233 732179 send us a message or feel free to email us or visit [www.orlestonoak.co.uk](http://www.orlestonoak.co.uk)**



ORLESTONE OAK

KENT • ENGLAND



# HIP HIP HOORAY!

Roses grace the garden with gorgeous blooms, fragrance, and form. They also produce beautiful rosehips! Extend the interest in roses by fostering hips that enliven the winter garden in all sizes, shapes, and colours.

Now the autumn has given way to winter and the timely cold weather is upon us many British growers will be lifting their roses for the start of the bare root planting season.

November through to March is the best time to plant roses and bare root stocks are cheaper than potted plants later in the season.

Roses bring so much to the garden with their exquisite flowers and fragrance but many species and varieties have another hidden gem that only reveals itself as the summer ends: rosehips!

It's one of my favourite features of many roses and one that brings pure joy when other areas of the garden are diminishing. Amongst the

barley and umber colour of the autumn garden sparkle little jewels of colour. Iridescent with rain drops and sugar-coated in the frost, they bring colour and drama to any outdoor space.

Beyond their ornamental value, rose hips provide wildlife with a winter food source and are a great source of vitamin C for us as well as the birds. Rosehips can be collected and easily turned into jelly or jam with just a little effort. They are also beautifully decorative to bring inside the home. The stems and sprays can be used to make wreaths and garlands – let your imagination run wild!

There are roses with hips for every situation from large areas to pots on the patio.





IN ORDER TO ENJOY THE HIPS DEADHEADING HAS TO STOP BY MID AUGUST SO THAT THE FLOWERS CAN DEVELOP INTO ROSEHIPS FULL OF SEEDS. WAIT UNTIL JANUARY TO PRUNE THEM AFTER THE HIPS HAVE NATURALLY WITHERED.

Some of my favourite roses for their hips are:

*Rosa Rugosa* has large, rounded orange hips abundantly produced and long lasting. This wild rose is ideal for informal hedging and coastal gardens with bare root plants being sold at a very reasonable price.

*Rosa Glauca*, one of my absolute favourite varieties. Striking grey-blue foliage and glowing single pink flowers give way to small, perfectly round, dark red hips.

*Rosa Canina* or Dog Rose is a great choice for wildlife gardens, its hips are beloved by birds and make excellent syrup. Earlier in the year the pale pink delicate flowers have bright yellow stamens attractive to bees and hoverflies.

Rambling rose *Rosa Filipes* 'Kiftsgate' is a great rose for covering a large wall or climbing into a large tree. It bears clusters of white, open flowers in the summer followed by large sprays of small red hips.

*Rosa Pimpinellifolia* also known as the Scotch rose is a smaller rose with creamy white flowers and the most enchanting deep purple, almost black, shiny hips. It thrives in sandy soil

and will happily grow on chalk.

*Rosa Moyesii* 'Geranium' is a large shrub rose that can be grown as a climber with bright coral flowers during the summer followed by fantastically shaped elongated orange red fruits.

*Rosa Dannahue* is a new variety modern shrub rose by David Austin that is perfect for a pot. It has dusky apricot yellow blooms that have an old-fashioned quality and an exquisite scent. They are followed by orange rounded hips.

Getting creative with your rose hips is the fun bit, there are many things to make and do.

They are also delicious and packed with antioxidants and vitamin C, perfect for boosting your immune system. However they cannot be eaten whole straight from the plant as they contain tiny hairs around the seeds that irritate the throat and stomach. The jelly inside the hip has to be extracted. The simplest way to do this is to squeeze the hip near the end that was attached to the branch. You will see the soft orange jelly escape. This can be eaten raw or prepared into rosehip jelly.





“THINK ABOUT PLANTING SOME ROSES THIS WINTER FOR A BEAUTIFUL AND LONG SEASONAL DISPLAY THAT EXTENDS BOTH THE AESTHETIC AND WILDLIFE BENEFITS OF YOUR GARDEN.

## *Creating a rose hip wreath*

Why not use rose hips to create a beautiful, natural wreath? The rich red and orange hues are perfect for Christmas and look great alongside pinecones, evergreen branches, and dried flowers.

Start by wrapping moss or ivy around a wire or natural wreath frame. Add sprays of

rosehips along with other foliage by tying in small bunches with fine wire and working around in a circle clockwise from the top, fastening each bunch close to the next at a slight angle away from the centre of the wreath.

Finish with a ribbon to hang it.

## Making rosehip jelly

- Collect hips, wash, dry and cut in halves.
- Cover with cold water in a stainless steel pan and add an apple cut in half to the water.
- Bring to the boil and simmer until the hips are mushy. Remove the apple.
- Strain the liquid through a piece of muslin or a jelly bag.
- When all the liquid has passed through the bag, measure the juice in a measuring jug and pour into a clean pan.
- Bring to the boil and add 500g of jam sugar for each ½ litre of liquid, boil until setting point is reached and you see the consistency turn from liquid to a thicker syrup. It should take between 5 and 15 minutes.
- Pour into clean jars, and cover.

Use as a spread, a daily tincture, add to gravy, stews, porridge and whatever else you fancy.

Bare root roses are available from many British rose growers, including here in Kent and are available to order online.

MY FAVOURITE GROWERS ARE:

**Rumwood Nurseries**, Langley, Maidstone  
([rumwoodnurseries.co.uk](http://rumwoodnurseries.co.uk))


**David Austin Roses**, Albrighton, Shropshire  
([www.davidaustinroses.co.uk](http://www.davidaustinroses.co.uk))

**Peter Beale Roses**, Norwich, Norfolk ([www.peterbealesroses.com](http://www.peterbealesroses.com))

So think about planting some roses this winter for a beautiful and long seasonal display that extends both the aesthetic and wildlife benefits of your garden into the darkest months of the year.

If you'd like advice on planting roses during this bare root season or designing roses into your planting schemes I would love to hear from you.

[Sarah@thegardencreative.com](mailto:Sarah@thegardencreative.com)  
07725055701 @thegardencreate  
[www.thegardencreative.com](http://www.thegardencreative.com)



WHEN COLLECTING ROSEHIPS REMEMBER TO ONLY TAKE WHAT YOU NEED AND LEAVE SOME FOR THE BIRDS. BIRDS LIKE THRUSHES, FINCHES, AND BLACKBIRDS RELY ON ROSE HIPS AS A VITAL FOOD SOURCE.



Driveways & Patios Ltd are a well established, professional company with a great reputation and have over 38 years experience.

We cover Herne Bay, Whitstable, Canterbury, Faversham, Sittingbourne, Thanet and all surrounding areas. We provide a first-class service, carrying out works to the very highest standard in a professional manner.



## Kent's leading specialists in DRIVEWAYS, PATIOS & FENCING

Est. 1987



We offer **FREE**,  
non-obligatory quotes  
and estimates.

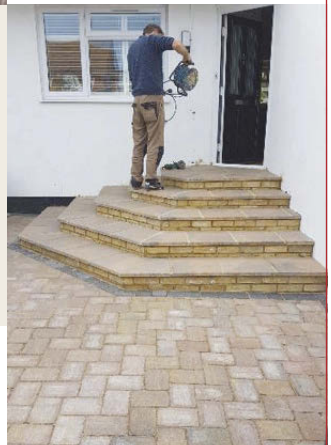
If you are interested in  
any of our services, please  
contact us for friendly  
professional advice.

Call:

**07770 964939**

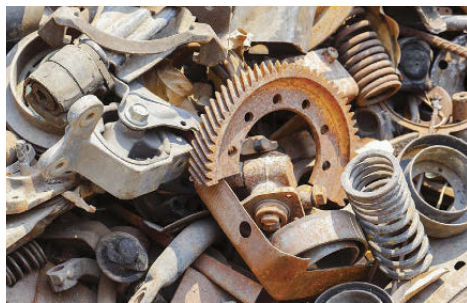


- Driveways
- Patios
- Block paving
- Fencing
- Turfing
- Decking
- Garden Clearance
- Building & maintenance work



**drivewayexperts.co.uk**





## SCRAP METAL RECYCLING

Polite & friendly service

Fully licensed

Clearance of all metals

Unfortunately we cannot take fridges or freezers

**Jason 07840 081990**

7 days a week

*Enhance your outdoor living space*



Verandas • Glass Rooms • Awnings • Pergolas  
Carports • Solar Garage Doors & Shutters



SBI Ltd 0800 0742 721 [sbiproducts.co.uk](http://sbiproducts.co.uk)

## You stay in the warm, we'll sort out the lawn

Our lawn care is year-round. We seed them, feed them, even control the weeds.

And, be it maintenance or repair, we do the heavy lifting. Like **Aeration** and **Scarification**, releasing compacted soil and reducing thatch (both causes of moss) to allow moisture, air and nutrients down to the roots.

Book your **FREE** lawn  
consultation today

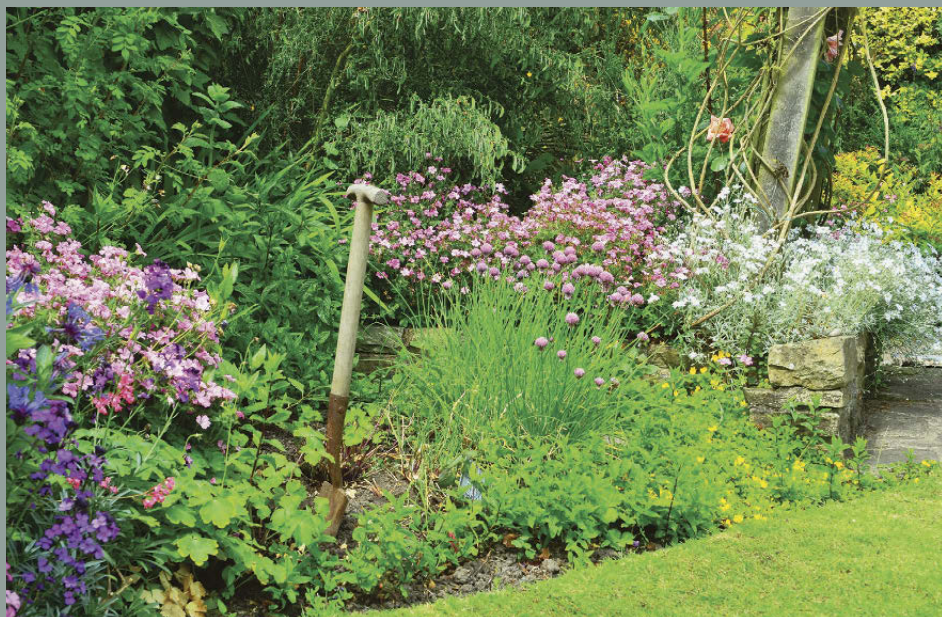
**GreenThumb**  
LAWN TREATMENT SERVICE



**Canterbury branch**

Call **01227 652351** Email [canterbury@greenthumb.co.uk](mailto:canterbury@greenthumb.co.uk)





## G&D GARDENING & PAINTING SERVICES



- Garden clearance
- Garden maintenance
- Pressure washing
- Grass cutting/pruning
- Internal/external painting

For a FREE quote

Tel: 07938 756617

# The Antique Oak Flooring Company

SPECIALISTS IN ANTIQUE AND RECLAIMED FLOORING



VIEWING BY APPOINTMENT

Willow Court Farm, Bilsington Road, Ruckinge, Ashford, Kent TN26 2PB

T: 01233 659508 M: 07733 263540 [www.antiqueoakflooring.com](http://www.antiqueoakflooring.com)



# CHOOSING THE RIGHT KITCHEN AND BATHROOM

*for your Victorian home*

WHETHER YOUR CHOICE OF KITCHEN AND BATHROOM FURNITURE IS CONTEMPORARY OR TRADITIONAL, HIGHLIGHTING YOUR PROPERTY'S ARCHITECTURAL FEATURES WILL GIVE THE ROOMS BOTH CHARACTER AND A UNIQUE, BESPOKE FEEL.



[devolkitchens.co.uk](http://devolkitchens.co.uk)



*grantsofsevenoaks.co.uk*



*hogwoodhouse.co.uk*

## VICTORIAN KITCHEN FEATURES

- A large cook's table or island unit
- Freestanding furniture such as a glassware/crockery dresser
- Ornate corning and twisted pilasters
- Pulley clothes dryer above a range cooker
- Scullery-style wet area with butler's sink
- Copper items such as jelly moulds and kettles
- Cream or white painted cabinetry mixed with oak or teak worktops
- Dentil moulding and intricately carved corbels



## DETAILS MATTER

It's the details that matter most, so include key pieces inspired by the past such as a butler or Belfast sink, a pantry, and open shelving displaying wares that give an insight into the kitchen's functional purpose.



## TAKE A STAND

Although the pedestal sink was popular in Victorian bathroom ideas, their love of wood and expensive materials was demonstrated in the design of bathroom furniture such as washstands. This beautiful version is a great example of how an historical item can be updated and made suitable for use in modern homes.



## RAISE IT UP

If you're looking at types of toilet, there's one key rule to adhere to when it comes to choosing the best one for your Victorian bathroom idea: opt for a high-level cistern toilet with exposed pipework. This design not only pays homage to Victorian engineering but also adds an element of decorative flair to the bathroom.







## ELEGANT CURVES

This suite uses finely sculptured contours to create a look that will not be forgotten.

## PERFECT FOR A SOAK

This stunning Bateau cast iron bath is the perfect addition to any bathroom looking for a touch of vintage elegance and luxury.



# RELAX IN STYLE THIS SEASON

## Enter our £1000 giveaway

Spend £120 online or in store and receive  
a ticket for the chance at winning  
£1000 to spend at The Victorian House.

T&C's available on our website.



## CAST IRON BATH COLLECTION

*Check out our website for more!*



### La Rochelle

1670x700x715/620mm

**£2,550.00**



### Rectangle Cast Iron Bath

1828x914x471mm

**£1,350.00**



### Millbrook Double Ended

585x1700x1900/1770/1530

**£1,050.00**



## GARY MILLER DECORATIONS



### PROFESSIONAL PAINTER & DECORATOR

Apprentice served with over 40 years experience in exterior and interior decorating. References available.

Tel: 01634 235773 or 07971 871433 • garymillerdecorator@gmail.com

## CGS BLINDS & SHUTTERS LTD

*Insect flyscreens now supplied and installed  
for residential and commercial properties*

NEW MATERIALS

FINANCE OPTIONS

AVAILABLE

- Huge choice
- FREE quotations

Tel: 01227 278643

146 Tankerton Road,  
Whitstable CT5 2AW



[www.cgsblinds.co.uk](http://www.cgsblinds.co.uk)

Proud members of

**Checkatrade.com**

**BBSA**  
BRITISH BLIND & SHUTTER ASSOCIATION

# The Canterbury Auction Galleries

FINE ART AUCTIONEERS SINCE 1911

*Auctioneers of the rare, the collectible and the exceptional*



## 2025 AUCTION DATES

14th & 15th  
**FEBRUARY**

Entry deadline 20th December

6th & 7th  
**JUNE**

Entry deadline 2nd May

3rd & 4th  
**OCTOBER**

Entry deadline 29th August

11th & 12th  
**APRIL**

Entry deadline 7th March

1st & 2nd  
**AUGUST**

Entry deadline 27th June

28th & 29th  
**NOVEMBER**

Entry deadline 24th October

## Have something to sell?

From watches, jewellery, cameras, art and antiques to 20th Century collectibles, The Canterbury Auction Galleries has a strong track record in achieving worldwide saleroom prices.

**Contact us today for a free valuation**

Telephone **01227 763337** Email **general@tcag.co.uk** Visit **thecanterburyauctiongalleries.com**





# CHARLOTTE HEATHER



CHARLOTTE IS AN ILLUSTRATOR, MAKER AND MOTHER. SHE CREATES INTRICATE PAINTINGS AND PAPER CUTTINGS AT HER DESK AS A CALMING ESCAPE FROM THE CHAOS OF MOTHERHOOD AND LIFE.

Charlotte creates small artworks using watercolours and pencil, finished with a delicate layering of paper carefully cut by hand using a craft knife. Her sustainably printed cards give a subtle impression of the collaged effect.

Her selection of cards is designed in mind to be used for a variety of occasions making them extremely versatile.

They are printed locally at a sustainable printing company. She uses card stock made from algae bloom, which gives a lovely unique speckled finish, and is also eco-friendly. All packaging used is recyclable/recycled/compostable, all of which is really important to her. Any added details in her packaging, i.e. tissue paper and twine, can be re-used.

Along with her selection of cards, Charlotte sells original artworks, mini-framed artworks and decorations, as well as keepsake commissions. These range from child portraits, cards, wedding gifts, and simple pet portraits in her illustrative and papercut style. There is also a small range of stationery and whimsical stickers.

Charlotte is inspired by the small joys, those glimmers of daily life: a steaming cup of tea, a good book, a quiet afternoon, an early pastel sunrise, a clear starry night, a fresh pot of coffee, a puzzle on a rainy Sunday, a slow morning, a long walk in the woods, her children embracing their childhood, and whimsical fairytales.



Other things that inspire her are Scotland, the works of Beatrix Potter and children's books. Charlotte's cards and illustrations can be found on Etsy ([CharlotteHeatherIllo](#)) and in a few independent shops dotted around Kent, as well as several seasonal markets throughout the year. (Instagram [@charlotteheatherillustration](#).)

- Made in Ashford • Native Three, Folkestone
- Canterbury Makers • Macknade, Faversham
- Especially Health, Sevenoaks

After a year at art college, Charlotte studied Fashion Design at Nottingham Trent University and during her time there, she discovered a real passion for illustration. Joining Association of

## - Artist profile -



Illustrators for a short time, graduating, and then getting admin jobs to support herself financially, her dream to illustrate children's books remained. Becoming a mother and seemingly always surrounded by piles of paper and a box filled with materials to colour and draw with, gave her the creative nudge she needed to pursue her love of illustration a bit further, taking it more seriously.

During lockdown, Charlotte and her children regularly sat at the table creating, as well as joining in with online art clubs and signing up

for workshops and mini creative courses.

In early 2022 she registered as self-employed, almost at the same time as becoming a single parent. Signing up to a free online business course, she pushed herself out of her comfort zone, and applied for her first market for a month's time, with zero stock at all. It was the motivation she needed to get started.

The year ended with having illustrated her first Children's book, in collaboration with a local grotto. All things magical and Christmas! A story that fuelled her dream...



# WAREHAMS

Antique Garden Ornament — Gustavian Furniture



68 Oxford Street - Whitstable CT5 1DG  
Mobile : 07831 210139  
[www.warehams.com](http://www.warehams.com)

## SOUTHGATE ELECTRICAL CO. LTD

*The Best Electrical Services*

Offering a full range of electrical services  
from design to installation

- External Electrics
- New Builds
- Access and Security
- Space Heating
- Electric Showers
- Fire Alarms
- Landlord Certificates



T: 01227 712790 / 07889 895394  
[www.electricians-canterbury.com](http://www.electricians-canterbury.com)

APPROVED CONTRACTOR DOMESTIC INSTALLER LTD

# Ed Parry

## Plumbing & Heating

### Installation, Servicing & Repair

- Boilers
- Cookers
- Central Heating
- Bathrooms
- Power Flushing
- Showers



*Landlord gas safety certificates*

01227 266236 • 07976 925224  
[ed.parry@me.com](mailto:ed.parry@me.com)  
[www.edparryplumbingandheating.co.uk](http://www.edparryplumbingandheating.co.uk)



**SuperMaid**

**Established 1988**





## DOMESTIC CLEANING SERVICES LTD

Regular or One-off Cleaning

Homes and Holiday Lets

End of Tenancy

Moving Cleans

Spring Cleans

Professional, Friendly, Reliable Service

CALL US NOW FOR A FREE QUOTATION

Tel: 01227 277033 | [www.supermaids.co.uk](http://www.supermaids.co.uk) | [info@supermaids.co.uk](mailto:info@supermaids.co.uk)

# Bagham Barn

ANTIQUES & INTERIORS

Canterbury Road (A28)  
Chilham, Kent CT4 8DU  
Tel: 01227 732522  
baghambarnantiques.com



Open Thursday, Friday, Sunday 10am to 4pm and Saturday 10am to 5pm  
Holiday opening times: Thursday 19th Dec to Sunday 5th Jan, 10am - 4pm each day.  
Closed Christmas Day and Boxing Day



Georgian to vintage furniture,  
including collectables  
good quality antique silver  
and ceramics, jewellery,  
kitchenalia and soft  
furnishings.

Come and see our items,  
then have a cup of coffee  
and cake in our highly rated  
Tearoom.



Serving local brew teas  
and excellent coffee,  
savory snacks, lunch and  
freshly baked cakes





# HMR

HAND MADE RUGS

With an ever-growing demand for custom-made, designed rugs and our collaborations with designers across the globe, we can create rugs in any design imaginable, alongside thousands of existing rugs to choose from.



New Hand Made Rugs showroom now open

The Old Bank, 84 High Street Rye, East Sussex

Call. 01797 360353 | [rye@handmaderugs.co.uk](mailto:rye@handmaderugs.co.uk) | [www.handmaderugs.co.uk](http://www.handmaderugs.co.uk)



- Decorative details -

# PLASTER CRAFT

Plaster ornamentation adds character to any room and has been around since the 17th century, when plastered ceilings became the must-have decor of choice for wealthy families.

*noel-marquet.co.uk*



## A ROSE BY ANY OTHER NAME

The ceiling rose has been a part of interior decor since the 1600s, but if you think its function is purely decorative, think again. In fact, this type of decoration was originally installed to stop the ceiling getting scorched and discoloured by candle or gas flames, meaning that you only had to redecorate the rose – not the entire ceiling.





## CORNICE STYLES

Cornices are decorative moldings that run along the upper edge of the walls where they meet the ceiling. In Victorian design, you'll find different cornice styles, such as dentil cornices with small and acanthus leaf cornices adorned with intricately carved foliage motifs. Each style brings a unique character to your room, allowing you to choose one that matches your interior decor.



## WALL PANELS

Wall panels are a versatile and stylish way to add texture and dimension to any interior space. Panel molding consists of rectangular or square frames applied to the lower portion of the wall, creating a panel effect. These can be used in conjunction with dado rails or as standalone features. They add depth and texture to your walls, enhancing the overall aesthetic of the room.



*Sofa, £3,145 [arloandjacob.com](http://arloandjacob.com)*



# Maintaining plaster mouldings

*Decorative plasterwork can be a room's crowning glory, but often suffers from damages. Use our maintenance checklist and repair guide to restore mouldings to their original beauty.*

## Maintenance checklist

- Find the cause of damp patches and staining and correct at source.
- Check for loose sections of plasterwork.
- Note cracks and other damage.
- Identify and deal with problems associated with supporting timber work.
- Look for rot or insect attack.
- Clean dust and dirt from crevices and remove accumulated paint layers.
- Seek specialist advice if in doubt.
- Repair missing pieces or areas of damage.

## Repair guide

When undertaking renovation or repair work, try to avoid removing mouldings as plasterwork easily crumbles, and timber splits and chips.

Where removal is necessary, photograph, number and note the position of all sections so that they can be correctly returned later.

Minor damage may be repaired with a proprietary filler, while plaster of Paris is ideal for larger repairs. However, plasterwork requires considerable skill so it is advisable to employ a craftsperson where significant or intricate work is required.



# SPECIALISTS IN ROOFING



Canterbury Roofing is a family-run business with over 35 years' experience working in Kent and surrounding areas. We have vast experience of conservation and other roofing works.

- Guttering
- Flat roofing
- Velux and sky lights
- Conservation work
- Tiling
- Pointing and chimney work
- Slating
- Lead work



---

**FOR MORE INFORMATION  
AND TO CONTACT US:**

[www.canterburyroofing.com](http://www.canterburyroofing.com)

**Call Chris 07976 325520**

**or Saul 07878 194378**

[info@canterburyroofing.com](mailto:info@canterburyroofing.com)

---



# ECLECTIC GRANDEUR

We continue with our series of guides to period property, to help you easily identify key features and architectural styles. This time we're looking at how to recognise a Victorian house.



**T**he Victorian era spans an extensive period between 1837 and 1901, whilst Queen Victoria was on the throne. It was a time of enormous change due to the Industrial Revolution, which resulted in huge numbers of workers moving from the country into urban areas, with subsequent surges in population growth. This resulted in the creation of vast quantities of housing providing accommodation for all

classes, including the new workforce, plus the new middle-classes and also the wealthiest. This goes some way to explain why today many of us live in a Victorian house, whether it's a terraced property or something much grander. They are a common feature of our housing stock throughout the UK, and a very popular choice for home owners as they lend themselves to refurbishment and updating as modern family homes, suiting our 21st century lifestyles.

## EXTRAVAGANT ELABORATE EXTERIORS

The love of simple design and symmetry of the preceding Georgian era became old fashioned and from the mid-1800s domestic buildings were heavily influenced by styles and trends that were very much more dramatic, like the Gothic Revival, Arts and Crafts movement and Italianate styles. Victorian houses were characterised by steep slate or tiled roofs sometimes with carved ornaments on the highest points. These embellishments continued throughout the exterior with the addition of ornately carved bargeboards; these timber trims were usually attached along the gable or roof-line. The use of terracotta tiles and patterned brickwork became very popular, all adding to the overall elaborate and showy quality of Victorian design.

## PRESTIGIOUS POINTY PORCHES

The decorative theme of the house's exterior would be echoed in the front porch, usually single storey, which would be adorned with the same style of ornamentation to match the house, including the steep angles of the roof and the intricately carved bargeboards. These were a wonderful way of drawing attention to the entrance of the home, almost becoming a 'shrine' to the most important feature, the front door.

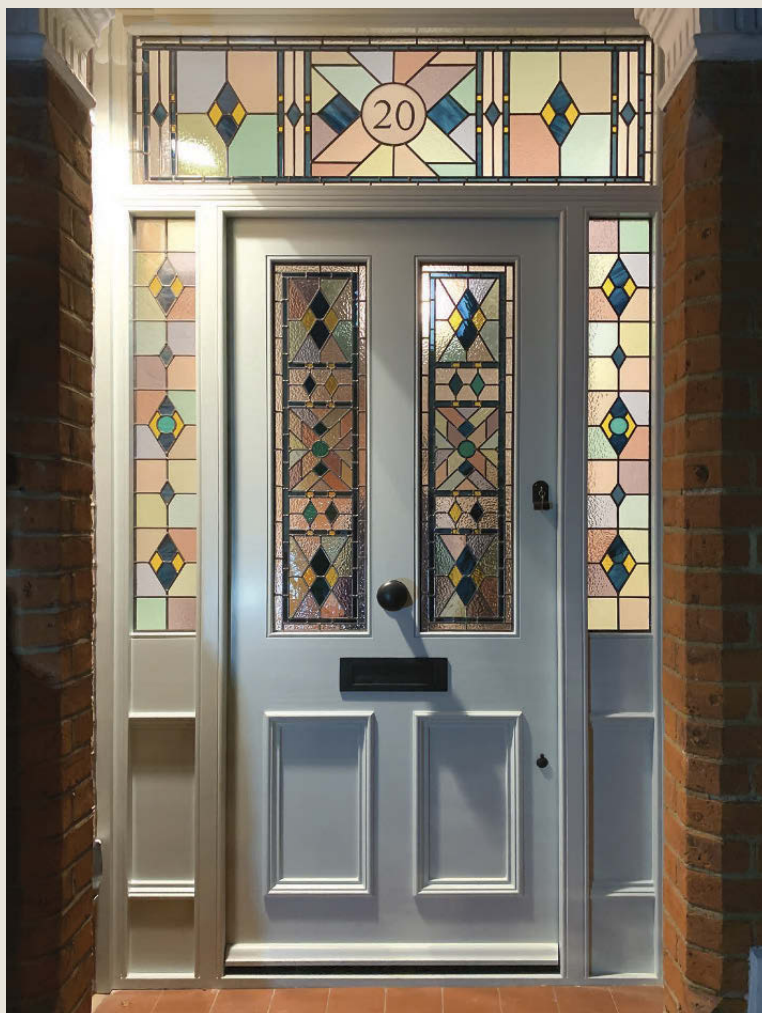
## STUNNING STAINED GLASS

A major advance in glass making technology, the introduction of plate glass, had an enormous impact on residential buildings in this period. Stained glass, which previously would have only been used in churches and large municipal buildings, as it would have



*theenglishporchcompany.co.uk*

been incredibly expensive, was now available to the more humble homeowner, not just the fabulously wealthy. Beautiful colourful stained glass panels were commonly used in entrances and feature windows on stairways. Typical Victorian designs were made up of borders of striking colours flowing around the panel. The central part of the design would consist of geometric shapes, usually pale shades, sometimes opaque, that would contrast beautifully with boldly colourful, eye-catching central features. These were usually stylised birds, fruit and flowers with flowing stems and leaves.



*cotswold-doors.co.uk*

### FABULOUS FRONT DOORS

The front door was an opportunity for the householders to put on a show and to impress visitors approaching the threshold of a well-to-do Victorian property with their wealth, respectability and fashionable style. Doors were usually made from timber and would have carved panels and matching architrave surrounds.

The upper panels would quite often have decorative stained glass panels inserted into them, which helped illuminate the interior and were yet another opportunity to impress. Some properties from this era still have the original stained glass in situ, but if you live in one where they haven't survived, it's worth considering reinstating with reproduction panels, or salvaged ones.





## IMPRESSIVE INTERIORS

Venturing past the beautifully patterned floored hallway into the interior of the Victorian house you would usually be met with large rooms with high ceilings, and, particularly in the reception rooms at the front of the property, the homeowners will have 'pulled out all the stops' employing the full range of elaborate design features the period is so well-known for. Everything was highly decorative: panelling, dado-rails, ceiling roses, cornicing and picture rails. The over-the-top design will have also spread to the staircase, which would be an opportunity to show off the wealth of the household, with an ostentatious design statement full of intricate carved details in the newel posts, handrails and balusters.

## TREASURED TRENDY TILES

By the late 1800s many ordinary Victorian terraced houses had geometric encaustic tiled flooring. These trendy and colourful tiles were most common in the hallway, and their use even spread outside the house to the pathway approaching the front entrance. They were an incredibly hardwearing and practical way of adding colour and making a style statement, indicating that the household was fashionable and well-to-do. Many were covered over in the past because they were considered old hat, especially in the 60s and 70s, so it's well worth a check if you live in a Victorian house to see if you've got some buried tile treasure waiting to be revealed and restored.



Victorian house. Sadly many were removed or covered over in the effort to update houses in later times, but thankfully some have survived. Original Victorian fireplaces were elaborately decorated and were mass produced cast iron. Ornate fire surrounds of wood, cast iron, stone, marble and slate were added to draw attention to this most important

### WONDERFUL BAY WINDOWS

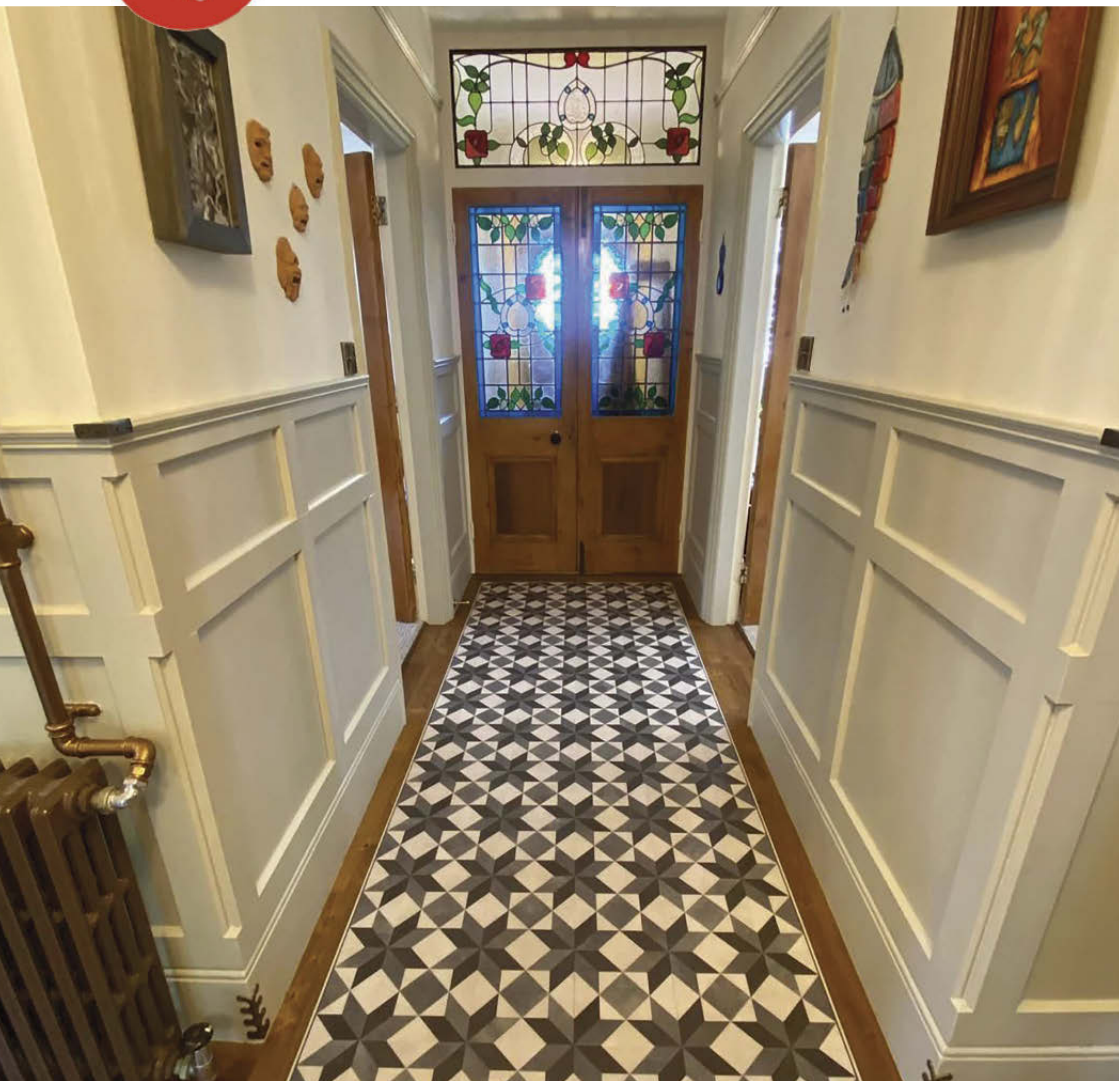
The introduction of plate glass also had an impact on the look and most importantly the size of windows in Victorian housing. Windows could now become much larger, sometimes single or double paned sash windows, and the much-loved bay window became very popular. These allowed more natural light into the interior of the house, which gave the impression of a roomier living space. If you're the proud owner of a Victorian home with a bay window, it's an asset that can be made much of as a useful additional space. Here are some ideas of how you can make use of this and bring it up-to-date to suit your lifestyle: create a window-seat with storage built in underneath, or a reading nook. You could fill it with plants and greenery that will thrive in the extra light to get your 'green fix' without venturing outside. Maybe it could be your mini-office or working from home recess, or if it's big enough it could be your dining area?

### FASHIONABLE FEATURE FIREPLACES

As the only way of heating the home, there was usually a fireplace in every room of the

feature in the home. Tiles with floral motifs and geometric patterns also became popular later in the period. If your Victorian home is missing its fireplaces it's good to know that there are many companies that offer reproduction and original refurbished fireplaces, so you can restore what was an integral part of the Victorian interior.





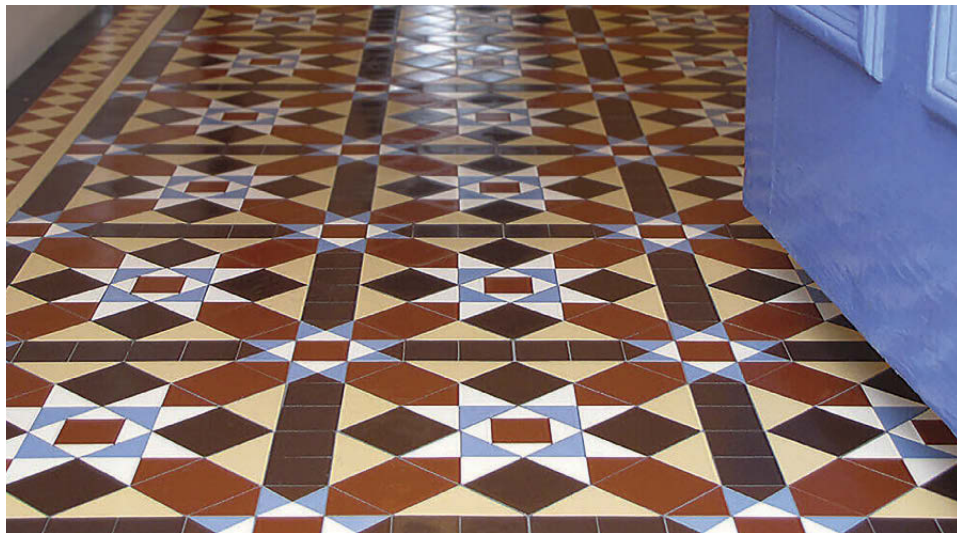
Expertly installed quality carpet and flooring

64-65 High Street, Wingham, Canterbury, Kent, CT3 3BJ

Tel: 01227 721 938 [www.redflooring.co.uk](http://www.redflooring.co.uk)



# HOW TO... RESTORE VICTORIAN TILES



ANYONE LIFTING A HALLWAY CARPET IN A VICTORIAN HOUSE DOES SO WITH ANTICIPATION, ALTHOUGH EXCITEMENT MAY WANE SLIGHTLY AS THE MAJORITY OF ORIGINAL TILES MAY HAVE SUFFERED A CERTAIN AMOUNT OF WEAR AND TEAR.

**B**egin the restoration process by thoroughly cleaning the tiles. Sweep or vacuum the floor to remove loose dirt and debris. Use a mild detergent, baking soda or a specially formulated cleaner and warm water to mop the floor. Avoid using abrasive cleaners or harsh chemicals that can damage the tiles. For stubborn stains, use a soft-bristle brush and gently scrub the affected area. Rinse the floor with clean water and allow it to dry completely before proceeding.

If you are not successful at removing waxes and coatings without using chemicals, make use of a sealer remover to eliminate them and to remove water-based acrylic sealers. After applying the product to the floor and allowing it to sit there for ten to twenty minutes, the sealer should have become more malleable.

Because the chemical may seep into the tile surface, you need to keep the surface wet as you work, so divide the area into manageable parts. Scrub the area using a cleaning pad. Continue until all of the remains of the old sealer have been removed.

Remove the thick residues with a plastic blade. Use some clean, warm water and a sponge, and then dry with a towel or cloth after removing any residue that may still be present.

After that, give it a few washes with a weak solution of an alkaline cleaner, which should be diluted 1 to 10 with water.

## REPAIRING

Once the tiles are clean and dry, it's time to repair any damaged or missing ones. For small chips or cracks, you can use epoxy or adhesive to fill in the gaps. Carefully apply the adhesive



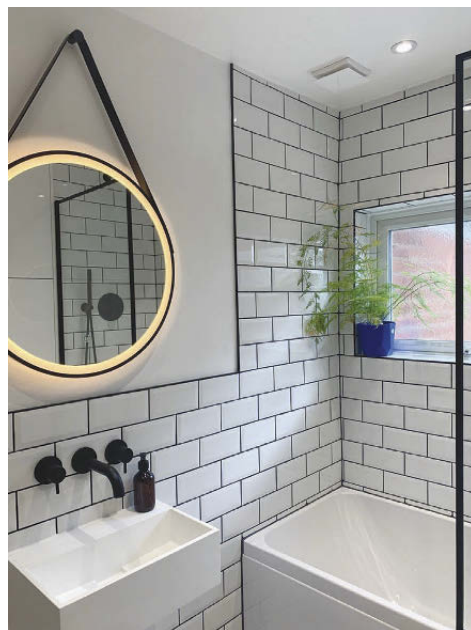
and smooth it out to match the level of the surrounding area. If a tile is completely broken or missing, try to find a replacement that matches the original design.

## REPLACING GROUT

Over time, the grout can become discoloured or deteriorate. To restore the appearance of the floor, consider replacing the grout. Remove the old grout carefully, taking care not to damage the surrounding tiles. Once removed, clean the gaps thoroughly and allow them to dry. Mix a fresh batch of grout and apply evenly. Wipe away any excess grout with a damp sponge and allow it to cure for the recommended time.

## MAINTENANCE TIPS

To maintain the beauty of Victorian floors, establish a regular cleaning routine. Sweep or vacuum the floor regularly to remove dirt and debris that can scratch the tiles. Mop the floor with a mild detergent or cleaner and warm water to keep it looking fresh. Avoid using abrasive materials that can damage the tiles. Periodically sealing the tiles can help protect them from stains and wear.



## M SHIRLEY

*For beautiful bathrooms*

*Expert in fitting, tiling  
and renovations*

Specialising in bathroom  
renovation, including tiling,  
plumbing and decorating.

Also home maintenance  
and renovation undertaken  
within the mid-Kent area.

Free quotations available  
All work fully insured

**07565 843931**

email: [martin10.shirley@gmail.com](mailto:martin10.shirley@gmail.com)



# EMANUEL'S

SOFT FURNISHING INTERIORS



Bespoke curtain & upholstery work • Unique gifts & lighting • Blinds & shutters supplied and installed • Motorisation & sun sensor on patio awnings • Track specialist for bay windows

117 Tankerton Road, Whitstable CT5 2AN | 01227 770039 | [www.emanuels.co.uk](http://www.emanuels.co.uk)



# A LIGHT TOUCH

OWNING A PERIOD HOME IS A DREAM FOR MANY, HOWEVER, THEY COME WITH THEIR OWN SET OF CHALLENGES, ESPECIALLY WHEN IT COMES TO NATURAL LIGHT. FORTUNATELY, THERE ARE PLENTY OF WAYS TO ENHANCE THE NATURAL LIGHT IN YOUR HOME WHILE RESPECTING ITS CHARACTER.



*thewindowsanctuary.com*



## MAXIMISING WINDOWS AND DOORS

One of the most straightforward ways to increase light in a period home is to make the most of its existing windows. Original sash windows can often be restored to their former glory, allowing more light to flood into your spaces. Consider refurbishing these instead of replacing them. Repairing wooden frames, upgrading to energy-efficient glass, and ensuring that they open smoothly can dramatically enhance your home's brightness.



*thewhitecompany.com*



### OPT FOR LARGER WINDOWS

If you're willing to invest a little more, think about enlarging your windows. This doesn't mean compromising your home's historic integrity; instead, look for ways to add larger panes that complement the original design. For instance, a Victorian home can benefit from floor-to-ceiling windows in a dining area creating inviting in more sunlight.

### FRENCH AND BI-FOLD DOORS

Replacing solid doors with French or bi-fold doors is another excellent way to enhance light. These designs create a seamless connection between your indoor and outdoor spaces, making the home feel larger and more inviting. When opened, they allow natural light to flow freely from the garden into your home, especially in open-plan living areas.

*john-lewis.co.uk*





### THOUGHTFUL EXTENSIONS

A well-designed extension can bring a wealth of light into your home while adding valuable living space. Consider a glass extension to the rear of your property. This modern approach contrasts beautifully with traditional architecture and can create a stunning visual experience. A glass roof or wall can flood the space with light, making it a perfect spot for a kitchen or family room.



## EMBRACING OPEN-PLAN LAYOUTS

Many period homes have compartmentalised layouts, which can hinder the flow of light. If possible, consider opening spaces. Removing non-structural walls can create an open-plan layout that allows light to travel freely between rooms. This design not only enhances light but also fosters a sense of community within the home, perfect for modern living.

## STRATEGIC ZONING

When transitioning to an open-plan layout, consider how to zone spaces effectively while maintaining light flow. Use furniture, rugs, and lighting fixtures to define different areas without creating physical barriers. For instance, a sofa can delineate the living area from the dining space while still allowing light to permeate throughout.





## COLOUR AND DECORATION

Once you've maximised the light in your home through architectural choices, consider your interior design. Light neutral colours on walls can make spaces feel larger and airier. Additionally, incorporating mirrors and reflective surfaces can bounce light around the room, amplifying its effect. Choose furnishings that complement the light aesthetic – think light woods, soft fabrics, and metallic accents.



Where passionate design and skilled craftsmanship meet to produce unique pieces...

# Upholstery Courses

Specialist Workshops

Day, Evening & Weekend Classes

3 Year Upholstery AMUSF Diploma

## LEISURE COURSES

- ✓ DAY CLASSES
- ✓ WKND UPHOLSTERY COURSE
- ✓ SMALL CLASS SIZES
- ✓ GIFT VOUCHERS AVAILABLE

**PLUS** VARIOUS CREATIVE COURSES

Our courses are suitable for all abilities. You'll learn how to transform ordinary furniture into extraordinary pieces!

## AMUSF QUALIFICATIONS

YEAR 1 » COURSE STAGE 1  
Craft Certificate

YEAR 2 » COURSE STAGE 2  
Intermediate Craft Skills

YEAR 3 » COURSE STAGE 3  
AMUSF Diploma

Each Stage is a One Year Course.  
Term Time = 1 day per week/36 wks

Enrolling Now



Awarding Body: Association of Master Upholsterers and Soft Furnishers (AMUSF)

## KENT LEADING UPHOLSTERY TRAINING CENTRE

JOIN A COMMUNITY PASSIONATE ABOUT CRAFTSMANSHIP AND DESIGN

Visit our website  
[wellsandwhite.co.uk](http://wellsandwhite.co.uk)  
for course info and fees



Wine glass, £8,  
maisoncherie.shop



French farmhouse chair, £189  
wheresaintsgo.co.uk



Pendant light,  
£90, darlighting.co.uk



Stoneware mug, £9.99,  
giselagraham.co.uk



Cushion, £25,  
frenchbedroom.co.uk



## GET THE LOOK

# French farmhouse

Wall shelf, £74.95  
melodymaison.co.uk



Jug, £24.99  
giselagraham.co.uk



Rattan laundry basket, £65  
marquisanddawe.co.uk



Patchwork tiles £16.99  
tilemountain.co.uk



Dressing table stool,  
£199,  
cotswoldco.com

Bodum coffee pot, from £26,  
Copperfields of Whitstable



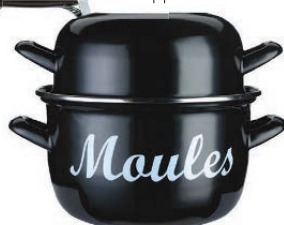
Camembert baker, £24,  
Copperfields of Whitstable



Harrison clock, £85  
neptune.com



Napkins, £28,  
helenround.com



Moulès pot by Kitchen Craft, from £23,  
Copperfields of Whitstable

Carafe, £27.50,  
maisoncherie.shop



Giselle vase, from £65  
neptune.com



Footstool, £1,860,  
juliabrendel.com



Planters (set of 3) £129,  
vincentandbarn.co.uk



Wicker bench, £275, [wheresaintsgo.co.uk](http://wheresaintsgo.co.uk)



Blossom planter, from £23.99  
[thewisteriatree.co.uk](http://thewisteriatree.co.uk)



Salt & pepper set, £118  
[rebeccaudall.com](http://rebeccaudall.com)



Old French wall hanger, £42,  
[heavenlyhomesandgardens.co.uk](http://heavenlyhomesandgardens.co.uk)



Lacanche range cooker, £5,650  
[hogwoodhouse.co.uk](http://hogwoodhouse.co.uk)

Print, £13.50,  
[inkanddrop.com](http://inkanddrop.com)



Table lamp, £60,  
[cotswoldco.com](http://cotswoldco.com)



French style chair, £675  
[laresidenceinteriors.co.uk](http://laresidenceinteriors.co.uk)



Tin jug, £18.99  
[thewisteriatree.co.uk](http://thewisteriatree.co.uk)



Mugs, £40 per pair,  
[oka.com](http://oka.com)



Stool, £395,  
[oka.com](http://oka.com)



Mirror, £35,  
[clickstyle.co.uk](http://clickstyle.co.uk)



Garden cushion,  
£16 [dibor.co.uk](http://dibor.co.uk)



Set of metal garden table & chairs,  
£245, [afternoah.com](http://afternoah.com)

A reputation built on quality  
craftsmanship and service

*Karl  
Terry*

Roofing Contractors



Kent Peg Tiling & Listed Building Specialists.  
Conservation and renovation specialists.  
High quality work by experienced craftsman.  
National Award Winning Company.

01797 270 268 | [kentpegs.com](http://kentpegs.com)





# Putting the heart back into Hartridge House



We've been fortunate to have previously featured several projects from the renowned historic building and specialist conservation company, A T Palmer Ltd in recent years. The features on their projects always make fascinating reading, illustrating the full breadth of their workforce's talents, skills, and their amazing attention to detail. They have built up an enviable reputation as one of the most highly respected firms in the field and recently celebrated their 75th anniversary.





Here's yet another shining example of their work, as we take a look at Hartridge House. This was the total refurbishment and extension project of an early 20th century house in Kent that was crying out to be brought up to date and to be sympathetically restored as a masterpiece of modern living.

The Grade II Listed, Hartridge House is described as standing high above the Weald of Kent, commanding panoramic views. The building is a red brick country house built in 1913 for Colonel Charles Grey, a respected horticulturalist and nursery owner. It was possibly built to designs by the Arts and Crafts architect, Mervyn Macartney. It was sold in 1920 and had many different owners over the years,

for a time it was used as an office building for an Insurance company. However, when the new owners purchased it in 2022, very little had been done to the property for over forty years. The heating system was virtually defunct, it was a very cold and run down house, in need of a total refurbishment.

The architects Stephen Langer based in Tunbridge Wells were appointed by the owners to develop the designs for the total upgrade and refurbishment of the house, with an additional orangery extension to one side. Stephen Langer is a well-known RIBA Chartered Practice with a wealth of experience in conservation projects of Listed and period properties. They have a specialist design philosophy that is ideally suited to the particular needs of this project. Their ethos is to use a conscientious approach









to energy and ecological conservation in their designs, to ensure they are as future-proofed and sustainable as possible. It follows that one of the most important considerations for the owners was that the property be brought up to date to be as sustainable and eco-friendly as possible, so the architects were the perfect choice.

A T Palmer Ltd commenced work on the sympathetic envelope repair whilst Listed planning consent was being sought. This included repairs to the roof, windows, cleaning all

the brickwork and basically getting the exterior of the house ready for the next stages of the refurbishment to begin.

The designs, along with all the structural engineers details for the total refurbishment, renovation and orangery extension included improvement of insulation to the external fabric. The existing metal cased lead light windows couldn't be touched because of the Grade II Listed status, so new secondary timber double glazed windows were fitted inside the existing windows, to improve the energy efficiency.

The highest priority was to ensure the overall energy efficiency of the house and to upgrade its eco-credentials. The solution to this was to install a ground source heat pump and a solar array, along with under floor heating in much



of the ground floor. Everything that could be done to keep the building warm and to make it sustainable has been done, even the swimming pool is heated from the ground source heat pump and solar panels.

The orangery extension constructed by A T Palmer Ltd to the side of the original house is a tour de force. It has created a substantial and generous living space that has access out on to the swimming pool area, with a double height vaulted atrium ceiling, which bathes the room with additional light. Great care was taken to match the bricks for the orangery to the original house, which are specially made for the project and being 50mm thick handmade bricks. A local handmade brick company was found, to work with A T Palmer Ltd and the owners, to

develop a blend of 4 different colored bricks and the percentages of each colour to be used to match the original bricks of the house. The effect is stunning.

Right from the start the owners took the refurbishment and construction on as their own project and have been actively involved every step of the way. They lived in the house through the build, from section to section. This was made possible by creating a self-contained living accommodation complete with kitchen on the second floor, which meant they were very much in situ and able to work with the team on the project.

The owners worked closely with the architects as they created the drawings for the design,

the layout and the flow of the house. They also chose all the interior finishes themselves and have done an amazing job in creating stunning rooms with décor that evokes the era that the house was built in, selecting wallpapers, tiles and colours that are reminiscent of the Arts and Crafts movement and have masterfully blended these with more contemporary styles, achieving an overall elegant and modern interior throughout. This is a real triumph.

As the principal contractor, A T Palmer Ltd was responsible for the complete project. They were also heavily involved in developing the details of the fabric and materials used, even down to sourcing secondhand clay tiles for the new orangery roof to match the existing

house. Their highly skilled and multi-talented workforce were also responsible for all the interior work creating the cornicing, exquisite detailing, all the beautiful bespoke carpentry including cupboards, paneling, flooring and also fitting the sanitary wear throughout.

The owners, the Architects, AT Palmer Ltd and everyone involved in this inspiring project should be rightly proud of the wonderful work that has gone into rejuvenating what was a tired and rather dismal dwelling that had seen better days. They have breathed new life into Hartridge House, it is now recreated as a beautiful and sustainable home, that can take its rightful place in the 21st century and beyond into the future.

**For more info go to: [atpalmer.co.uk](http://atpalmer.co.uk) and [stephenlanger.co.uk](http://stephenlanger.co.uk)**



# A.T. PALMER LTD

RESTORATION SPECIALISTS EST.1949

OVER 70 YEARS IN BUSINESS



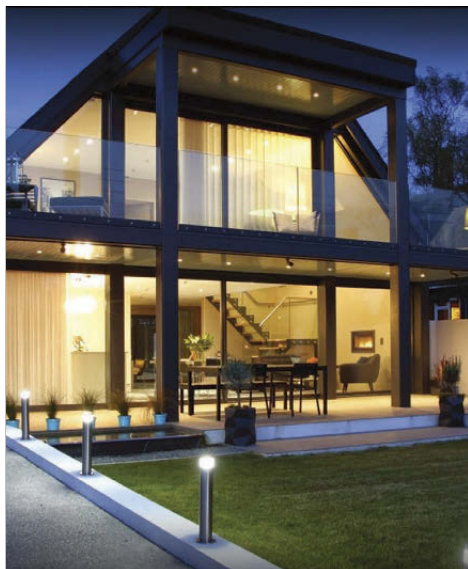
| EMPLOYED SKILLED WORKFORCE  
| RENOVATIONS & EXTENSIONS  
| CONVERSIONS & ALTERATIONS  
| DESIGN & BUILD

T: 01233 770077

SMARDEN BUSINESS ESTATE, TN27 8QL

[atpalmer.co.uk](http://atpalmer.co.uk)





## PJ ARCHITECTURE

Harbour Offices, Whitstable CT5 1AB

**01227 770470**

enq@peterjacksonarchitects.co.uk



## GEORGIAN BRICKWORK

[www.georgianbrickwork.co.uk](http://www.georgianbrickwork.co.uk)

*conserving your heritage brickwork for the future*

All aspects of heritage brickwork undertaken, including lime mortar pointing, tuck pointing, gauged arches, and carved brickwork. Clients include homeowners and also contractors requiring a specialist service.

**Professional Development Sessions**  
available to experienced heritage bricklayers

For more information please contact  
Charles Reilly  
e: [info@georgianbrickwork.co.uk](mailto:info@georgianbrickwork.co.uk)  
m: 07732 975 349  
w: [www.georgianbrickwork.co.uk](http://www.georgianbrickwork.co.uk)



## NON FERROUS METAL RECYCLING & WASTE HANDLING

### **JOHN BUTCHER BROS** **TEL: 01227 713850**

- Fast efficient turnaround
- Immediate cleared funds via BACS
- Collections available for larger quantities

### **CALL FOR CURRENT PRICES**

Open to the public & trade

Mon – Fri, 8am - 5pm

Sat, 8am - 12 noon

[www.johnbutcherbros.co.uk](http://www.johnbutcherbros.co.uk)

[info@johnbutcherbros.co.uk](mailto:info@johnbutcherbros.co.uk)



**We pay competitive prices for  
all the following grades:**

- Copper • Brass
- Lead • Copper tanks
- Aluminium • Cables
- Stainless steel
- Silver • Gold



Unit 12, Canterbury Ind Park, Island Road, Hersden, Canterbury CT3 4HQ



**DOLMEN**

ENGLISH VERNACULAR CARPENTRY  
KENT

**CONSERVATION  
& JOINERY**

BESPOKE ARCHITECTURAL JOINERY  
ENGLISH VERNACULAR CARPENTRY | HANDMADE KITCHENS  
PERIOD DOORS AND WINDOWS | SUSTAINABLE TIMBER SOURCING

*dolmenjoinery.co.uk | projects@dolmenjoinery.co.uk | 01708 732 813 | 01233 746 301 | @dolmenconservation*  
WOODCHURCH - KENT

**We are the UK's leading restorer and repairer of traditional, distinctive oast cowl & kiln roofs.**

New cowl construction. Painting & cleaning. Repair & maintenance. Also specialising in Kent peg tile roof repairs and kiln tile repairs.

Trusted over four family generations by royalty, businesses & homeowners alike.



Book a no-obligation visit  
01622 725 898 / 07973 332 790  
[www.dudeandarnette.co.uk](http://www.dudeandarnette.co.uk)





**Oast owners**



# RESTORATION & CONSERVATION

## SERVICES

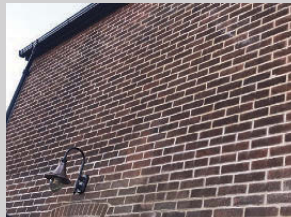
- Lime mortar pointing
- Brick and stone replacement
- Structural crack repairs & remedial wall ties
- Natural damp proofing
- Professional brick and stone cleaning
- Render removal to allow masonry to breathe



## ABOUT US

Prestige Brickwork is a Canterbury based restoration company that specialises in the conservation of period properties throughout Kent. We offer all types of expert brickwork repairs and repointing. We are specialists in working with lime mortar.

All of our staff members are fully committed to providing you with a stress free service. Our tradesmen are professional and are experts in bringing the beauty of your home back to life.



**Tel: 01227 908563 or 07954 409840**

[www.prestigebrickwork.co.uk](http://www.prestigebrickwork.co.uk)

email: [prestigebrickworkkent@gmail.com](mailto:prestigebrickworkkent@gmail.com)



# Full steam ahead for Prestige Brickwork

We're catching up with an extraordinary Kent based building conservation company that we introduced you to a couple of years ago, to find out how the important work they carry out to rejuvenate period properties and to breathe new life into them has progressed and to highlight some of their notable recent projects.

It's great that public awareness of conservation of all types has become more embedded in the psyche of society today; hopefully more and more of us have moved away from a throw-away culture, on to embracing a mindset that sees the value of restoring and renovating, which of course



is an ethos that's at the heart of any reputable building conservation company, like that of Prestige Brickwork.

Prestige Brickwork is based in Canterbury, covering the south-east including Kent, London and Essex. It's a family run business, established over six years ago by Sam Webster, who's not a rookie in terms of building experience, with 20 years plus under his belt. Sam and his team are much in demand as

they specialise in working on period properties from all eras, Tudor, Georgian, Victorian and Edwardian, and nowadays as more modern properties are requiring remedial work and maintenance, their services and expertise are in demand for 20th century and some more recent 21st century properties, especially as some of these also require their skills with materials like lime mortar, which is more often associated with older heritage properties.

The Prestige team offer an all-round service, which covers specialist repairs and repointing to all types of brickwork, structural crack repairs, brick and stone replacement along with general property maintenance as well. They also have the expertise to sympathetically and sensitively carry out conservation work with lime, which is an essential requirement for historic building repairs. This is vital as the use of authentic materials like lime mortar to effect repairs using time-honoured methods, aids drainage, stops moisture building up, allows the building to breathe, giving the structure a natural resilience, and what Sam has often referred to as 'natural damp-proofing'.

Some of the other benefits of using these more traditional methods and materials are environmental; modern materials like concrete are well known to have a dreadful reputation for being a big pollution problem, so there are gains to made by looking to the past.

So what else does this dedicated and professional team of builders have that sets them apart from the run of the mill? The answer is something that Sam has in his armoury, that he is passionate about and very keen to promote as his secret weapon, and that is the use of steam cleaning.

Sam has found that this produces amazing

results. Steam cleaning can remove layers of plant matter and grime that have built up on the exterior of buildings over many years. The steam cleaning machine is heritage approved and is safe to use on all building materials, bricks, tiles and stone, even soft sandstone, unlike jet washing and even more abrasive sand blasting of masonry, that can cause irreparable damage.

Once all the old grime has all been cleaned off, old mortar can be carefully scraped away, and it's important to note, the gentle steam cleaning does not disturb viable mortar, so repointing isn't usually necessary. If it is, it's then replaced with the appropriate material, usually a traditional lime.

This sympathetic, but highly effective cleaning method has the power to transform the brickwork to looking almost as good as the day it was originally built, allowing the property to hold its head up and shine again.

*For more info go to: [prestigebrickwork.co.uk](http://prestigebrickwork.co.uk)*







“THE PRESTIGE TEAM OFFER AN ALL-ROUND SERVICE, WHICH COVERS SPECIALIST REPAIRS AND REPOINTING TO ALL TYPES OF BRICKWORK, STRUCTURAL CRACK REPAIRS, BRICK AND STONE REPLACEMENT ALONG WITH GENERAL PROPERTY MAINTENANCE...







**Tel: 01227 770149 • Mobile: 07488 354005**

**info@upandoutplatforms.co.uk**

**upandoutplatforms.co.uk**

- IPAF Operated & self hire
- Flexible hire starting from half-day operated
- Tracked platforms with low ground pressure
- Narrow access through standard garden gates (795mm wide)
- Scaffold free approach
- 5 star Google reviews



**WILLIAMS**  
PURPOSE MADE JOINERY

**01795 521650**

60 London Road

Teynham

nr. Sittingbourne

Kent ME9 9QM



WINDOWS | DOORS | STAIRCASES | CONSERVATORIES & MUCH MORE

**www.fjwilliamsjoinery.co.uk**

info@fjwilliamsjoinery.co.uk

# ON A HIGH

## From Humble Beginnings

In 2009, a simple but seemingly insurmountable challenge sparked what would become a remarkable entrepreneurial journey.



A simple but seemingly insurmountable challenge sparked a remarkable entrepreneurial journey: “Sorry mate, don’t think it’s possible,” said the guy from the scaffold company when asked about accessing a tricky area of a property for some painting.

But for Richard Green, of Up & Out Platforms Ltd based in Whitstable, this response in 2009 planted the seed for a new business venture.

After 18 years as a shift manager at Thamesport container terminal, Richard was looking for a change. He had gained considerable experience in property

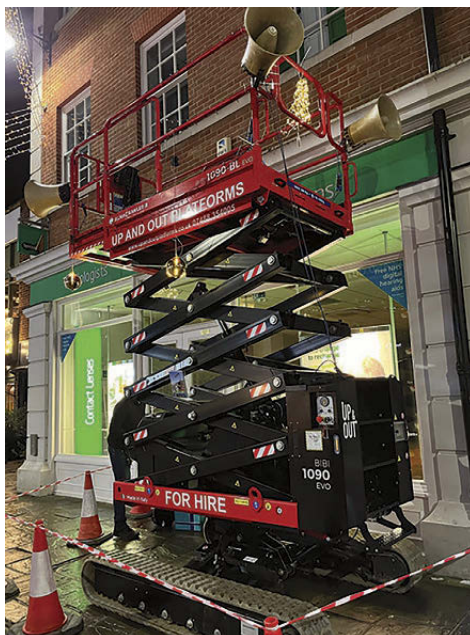
maintenance by working on his own property, but a specific project – painting the back of a house with constricted space and an orangery – led him to explore alternatives to traditional scaffolding. The solution was a piece of machinery he had never heard of before: a spider lift. Compact, versatile, and able to reach areas that seemed impossible for other equipment, this cherry picker-like machine seemed like the perfect solution.

But there was one problem: no local companies seemed to offer these lifts for hire. The national companies did, but their costs were prohibitive, especially since he only needed the lift for a short period. Undeterred,



“

UP & OUT PLATFORMS IS THRIVING, WITH A GROWING FLEET OF FIVE PLATFORMS AND A SOLID REPUTATION BUILT ON CUSTOMER SERVICE...







he took a leap of faith, purchasing a second-hand 17m spider lift from a seller on the south coast.

The early years weren't without challenge. The machine sat unused for much of the time, as Richard wasn't sure whether it was the right fit for a fully-fledged business. But then came a pivotal moment when a new job opportunity arose as Operations Manager for London Gateway container port, and during this period his son Tom completed his degree.

In 2018, father and son made the bold decision to officially launch Up & Out Platforms. Armed with their 17m platform and a renewed sense of purpose, they invested in a larger, more powerful machine – a 21m Teupen Leo 21GT, with an incredible 12m of outreach. The investment was significant, requiring the family to extend their mortgage, but it proved to be a turning point. At first hiring out the equipment was slow, but with persistence, word

of mouth, and strategic outreach to local tree surgeons, the bookings started to flow.

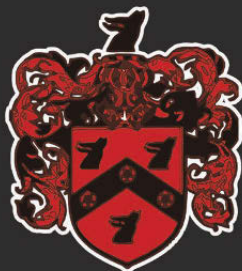
Seven years later, Up & Out Platforms is thriving, with five platforms and a solid reputation built on customer service and versatility. Unlike traditional cherry pickers, which are often cumbersome, heavy, and difficult to manoeuvre, spider lifts are lightweight and mounted on tracks. This makes it possible to operate on lawns and delicate surfaces without leaving a mark. Their compact size – under a metre wide and just 2m high – means they can access areas other platforms simply can't reach.

Customers are provided with expert advice on the best platform for their needs, and site visits are conducted to ensure smooth installation. The family-run company focuses on quick, efficient service. From tree surgery to roof maintenance, bat surveys and lots more besides, the range of applications for their equipment is vast. They even help with installing Christmas lights.

What started as a small solution to a seemingly impossible task has blossomed into a thriving business with a loyal client base and more than fifty 5-star Google reviews. The ability to adapt, invest in the right equipment and take calculated risks has paid off.

For those in need of elevated access for any number of projects – whether it's tree care, building maintenance or unique jobs like lifting a pool table for a house move – Up & Out Platforms offers a cost-effective, efficient alternative to traditional scaffolding.

**For more information, visit**  
**[www.upandoutplatforms.co.uk](http://www.upandoutplatforms.co.uk)**  
**07488 354005 or 01227 770149**  
**email: [info@upandoutplatforms.co.uk](mailto:info@upandoutplatforms.co.uk)**



## HERITAGE BRICKWORK RESTORATION LTD

- ‡ Lime Mortar Specialists ‡
- ‡ Historic Brickwork Repairs & Repointing ‡
- ‡ Gauged Brickwork ‡

Tel: 01227 264 737 Mob: 07866 388 962  
info@heritagebrickworkrestoration.co.uk  
[www.heritagebrickworkrestoration.co.uk](http://www.heritagebrickworkrestoration.co.uk)

## Anthony Swaine ARCHITECTURE LTD

Conservation • Design Consultancy • Listed Buildings  
Urban Design • Joinery Detailing • Traditional Shopfronts



**Initial consultation undertaken  
free of charge**

**Specialising in traditional design & works to  
historic buildings; timber framed structures; &  
new buildings in the historic context**

The Bastion Tower,  
16 Pound Lane,  
Canterbury,  
Kent CT1 2BZ

Tel: 01227 462680  
mail@anthonyswaine.co.uk  
[www.anthonyswaine.co.uk](http://www.anthonyswaine.co.uk)

## ASH SCAFFOLDING LTD

## Conservation Scaffolding Specialists



Smarden Business Estate, Smarden, Ashford TN27 8QL  
Tel: 01233 770373 email: info@ashscaffoldingltd.co.uk  
[www.ashscaffoldingltd.co.uk](http://www.ashscaffoldingltd.co.uk)



ORLESTONE OAK

KENT · ENGLAND

# Bespoke Flooring

LONG & WIDE · PRODUCED IN KENT · FINISHED BY HAND



JOINERY



OAK FRAMED BUILDINGS



DECKING



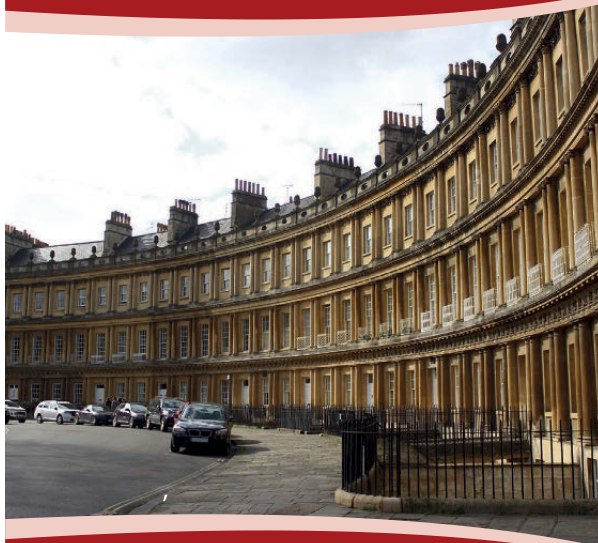
CLADDING

For more information on pricing or fitting, or to place an order

CALL **01233 732179** VISIT **[orlestoneoak.co.uk](http://orlestoneoak.co.uk)**



## Save on your home insurance



### Bespoke policies offered, including:

- Non-Standard Construction
- Listed Buildings
- Adverse Flood and Subsidence History
- High Value Homes and Contents

We have over 25 years experience in the Specialist Home Insurance Market, so give us a ring and get your personally tailored quote now!

**gsi-insurance**.com

GSI Insurance Services (Southern) Ltd  
118 John Wilson Business Park  
Whitstable  
Kent  
CT5 3QY

**Tel: 01227 772 775**

Your Specialist Home Insurance Broker

## Paul Terry Joinery

[www.paulterryjoinery.com](http://www.paulterryjoinery.com)

Est.  1998



QUALITY MATERIALS  
AND WORKMANSHIP




TRADITIONAL  
JOINERY SPECIALIST



CUSTOMISED TO YOUR  
EXACT REQUIREMENTS

Phone: 07725 306683 Email: [joinery12@icloud.com](mailto:joinery12@icloud.com)

Unit 27, Birnam Business Centre, Hammill Road, Woodnesborough, Sandwich CT13 0PR



# Supporting communities in Kent since 1781.

With offices across Kent and London,  
we provide specialist legal services for  
individuals and businesses in the Southeast.

- + Contracts & Transactions
- + Conveyancing
- + Employment
- + Family
- + Licensing
- + Probate
- + Property
- + Tax & Estate Planning
- + Wills

To find out how we can help,  
call us on **01622 698000**  
or email [enquiries@wmlaw.uk](mailto:enquiries@wmlaw.uk)

[whitehead-monckton.co.uk](http://whitehead-monckton.co.uk)



**WM** Whitehead  
Monckton

Whitehead Monckton Limited (no. 08366029), registered in England & Wales.  
Registered office 5 Eclipse Park, Maidstone, Kent, ME14 3EN. Authorised  
and regulated by the Solicitors Regulation Authority under no. 608279.

# WHY SEEK LEGAL ADVICE



The specialist team at Whitehead Monckton, can provide you with the expert support you need, in good times and in bad, to resolve the complex people issues you face. We understand that your people are key to the success of your business or organisation.

From the employer to the employee, from settlement agreements to disputes, employment law covers a wide range of issues and is an area that is subject to frequent changes; as we have seen with the Employment Rights Bill 2024 which proposes to dramatically change the legal landscape. It is ever important for employers and employees to stay up-to-date to ensure they are aware of their rights and obligations.

Employment is a big part of our lives and so it is likely that many people will come across situations that requires guidance from time to time. Seeking legal advice, is the best way

to ensure you stay protected on employment matters that may be affecting you.

In this article, we will explore 3 Common reasons for seeking legal advice for employment-related issues.

## CONTRACTS AND POLICIES

One of the most common reasons an employer may seek legal guidance is for help surrounding their employment contracts and policies.

Employment legislation can be lengthy and confusing, so when it comes to employment contracts and policies, you as an employer may not just be able to tweak a free sample template you find online. Seeking legal advice will ensure



that your contracts and policies are up to date and compliant with the latest requirements, protecting you against any potential claims. If you are an employee or worker, you are entitled to receive a written statement (often referred to as an employment contract) on or before your start date.

### THE REDUNDANCY PROCESS

The redundancy process is one that is quite complicated for both the employer and the employee. Seeking legal advice, as either party, is a great way to ensure you know what your rights and obligations are during the process. As an employee, you are required to seek independent legal advice for any settlement agreements you are entering into. This is to ensure you are fully aware of the terms and conditions of the agreement. As an employer, you are required to follow certain steps to ensure that you are upholding your statutory duty and are acting fairly throughout a redundancy process.

### RESOLVING DISPUTE AND EMPLOYMENT TRIBUNAL CLAIMS

Disputes can arise between employers and employees for a number of different reasons and so seeking legal advice in such situations can be crucial in ensuring you can reach an effective resolution. Employment law specialists can provide parties with guidance on the law and also suggest options to resolve matters, whether this be through alternative dispute resolution or, where necessary, litigation. Seeking legal advice may also be crucial in stopping these disputes arising in the first place. Ensuring you as an employer are meeting your duties towards your employees removes risks of claims and helps to protect everyone within the workplace.



### KEY TAKEAWAY

Both employers and employees may at some point find themselves needing employment law advice. Employment specialists often have years of experience dealing with difficult and complex situations and are best able to ensure your issues are dealt with confidently and efficiently by providing you with guidance that is tailored towards your specific circumstances. Getting timely and accurate employment law advice can help you maintain healthy working relationships and also save you a lot of stress going forward.

To find out how we can help call  
us on 01622 698000  
[whitehead-monckton.co.uk](http://whitehead-monckton.co.uk)

**WM Whitehead  
Monckton**

# CONSERVATION NEWS



Photo: Instagram: tale\_victoria

## Make your message count

We have over 50,000 readers per issue

Our magazine is delivered directly through letterboxes in carefully targeted areas. Conservation News is also available for collection at selected supermarkets, garden centres, pubs, coffee shops, farm shops and independent retailers throughout Kent.

**Find out how advertising with us can boost your business**

**email: [dawn@conservationnews.co.uk](mailto:dawn@conservationnews.co.uk)**

- PROPERTY FOR SALE -



## Little Statenborough House, Eastry

A handsome Georgian house providing a wonderfully comfortable and stylish family home with a charming annexe and flexible home office, set in thoughtfully landscaped grounds.

Little Statenborough House is a handsome Georgian property, providing a beautifully styled family home combining its period layout with the open plan spaces so favoured for modern living.

Set centrally in the original symmetrical façade, the front door opens to a hallway with reception rooms to either side. The sitting room is an elegant room arranged around a fireplace and flooded with light through a large sash window. Wooden flooring continues through to the adjacent kitchen/family room, which occupies a later extension and conservatory beyond. Facing south-west, these rooms together provide a fantastically generous family

area with plenty of space and light. The timeless dark blue units in the kitchen are arranged around a central island and the conservatory provides ample space for a large table with immersive views of the beautiful gardens.

Returning to the hall, a second reception room is currently arranged as a sumptuous cinema and is another delightful room, with a large sash window, part-panelled walls and doors to the courtyard on one side and the outdoor kitchen on the other. Towards the back of the hall is a large, immensely practical utility and laundry room and pantry. A boot room gives access to the back door.

To the back of the house, a further sitting









room has French doors leading outside. Beyond is a charming bedroom with an en suite shower room. This space would work well as a private area for guests, if desired.

An elegant staircase rises from the hall turning on a half landing and arrives at the first floor. On the first floor there are four bedrooms. The principal bedroom benefits from an adjoining dressing area which leads through to a smart en suite shower room. French doors offer access to a roof terrace and elevated views over the garden. The remaining bedrooms, one of which has an en suite shower room, are arranged across the front of the house; all have sash windows. The generous family bathroom has a shower and a freestanding bath; this is a fabulous room with part-panelled walls and wonderful wallpaper.

The Stables annexe and home office Behind the house, set around a courtyard, is a self-contained annexe to one side and a home office to the other. The annexe comprises an open-plan sitting room/kitchen, two bedrooms and a bathroom; the office building has potential for a variety of uses, including as an excellent gym, spacious yoga studio or as a second self-contained annexe, subject to any necessary consents.

#### Outside

Little Statenborough House is approached via wrought-iron gates set between brick pillars. The gravel drive leads to a turning circle and plenty of parking. The gardens are as beautiful as the house, imaginatively laid out to provide the perfect back drop. A series of outdoor 'rooms' and settings provide a sanctuary in which to socialise and relax.

A formal courtyard sits between the house, annexe and the home office, with column yews

planted symmetrically around a fountain.

Close to the house, sheltered by mellow brick walls is a terrace with an outdoor kitchen and barbeque. A lawn with silver birch grouped to one end is bordered by established shrubs. Steps leads to a sunken seating area surrounded by stone pillars and planted with jasmine and roses, amongst other shrubs. The eye is drawn through to a gothic stone window set to the end of the Italianate swimming pool garden beyond. Beyond a tall beech hedge, the garden is less formal. Picturesque 'ruins' are set on the edge of a wildlife pond and provide a magical vista from the conservatory. Tucked behind a hedge is a vegetable garden and greenhouse.

## The details

### *Main house:*

Reception hall | 2 Sitting rooms | Cinema room | Conservatory | Kitchen/family room | Utility/laundry room | Boot room | 2 Cloak-rooms | Principal bedroom with dressing room and en suite shower room | 4 Further bedrooms (2 en suite) | Family bathroom | EPC rating D

### *The Stables annexe:*

Sitting room/kitchen | 2 Bedrooms | Shower room | EPC rating TBC Home office with kitchenette and cloakroom | Off-road parking | Swimming pool | Pool house | Garden  
About 1.18 acres

Guide price: £1,750,000

Viewing by appointment only

Strutt & Parker, 2 St. Margarets St,

Canterbury CT1 2SL Tel: 01227 473700

[www.struttandparker.com](http://www.struttandparker.com)





# eat, drink, buy local

*support Kent  
businesses*



*The best of Kent's food and drink experiences including restaurants, bars, cafés, pubs, farm shops, delis, butchers and markets, as well as recipes and local produce.*

*(Photos: macknade.com; whitstableharbourgin.co.uk; alkhancourt.co.uk; duckandblade.co.uk)*

# Everybody loves chocolate

Whether you want to bake homemade cakes or brownies, create spectacular desserts for a party or craft mini chocolate treats, you'll find something to love here.

Take a tour around the globe and learn the best chocolate recipes from the Americas, Europe, the Middle East, Asia-Pacific and Africa.





# Chocolate Banana Bread

PREPARATION TIME: 15 minutes

COOKING TIME: 50-55 minutes

## NORTH AMERICA

**Makes: 1 x 24 x 12cm  
9½ x 4½ inch loaf**

125g/4½oz/½ cup butter,  
softened, plus extra for  
greasing and to serve

125g/4½oz/¾ cup soft  
brown sugar

2 eggs, lightly beaten

150g/5½oz dark  
(bittersweet) chocolate,  
melted and left to cool

3 ripe bananas, peeled  
and mashed, plus 1 small  
banana, peeled and cut  
in half lengthways

1tsp vanilla extract

200g/7oz/1½ cups  
self-raising flour

Preheat the oven to 180C/350F/gas 4. Grease a  
24 x 12cm/9½ x 4½ inch loaf pan with butter, and  
line with baking paper.

In a large bowl, beat the butter and sugar together until  
light and fluffy using an electric hand mixer. Add the eggs,  
beating well, then stir in the melted chocolate, bananas,  
vanilla extract and flour until just combined using a  
wooden spoon.

Spoon into the prepared pan. Place the two banana halves  
on top of the cake batter, pressing lightly so that they  
adhere to the cake.

Bake in the hot oven for 50-55 minutes, or until a skewer  
inserted into the middle of the cake comes out with just a  
few crumbs clinging to it.

Remove from the oven and leave the cake in the pan to  
cool for 10 minutes, then turn out on to a wire (cooling) rack  
to cool completely.

Serve in slices with butter for spreading.





# Chocolate Brownie Cookies

PREPARATION TIME: 20 minutes

COOKING TIME: 11-13 minutes

## NORTH AMERICA

### Makes: 12 cookies

25g/1oz/2tbs butter, chopped,  
plus extra for greasing

175g/6oz dark (bittersweet)  
chocolate, broken into pieces

1 egg lightly beaten

100g/3½oz/½ cup  
caster sugar

1tsp vanilla extract

40g/1½oz/⅓ cup  
self-raising flour

60g/2¼oz/⅔ cup pecan nuts,  
toasted and chopped

85g/3oz/½ cup milk  
chocolate chips

small handful of sea salt,  
to garnish

Preheat the oven to 180C/350F/gas 4. Grease 2 large  
baking trays with butter.

In a small saucepan, melt the butter and chocolate  
together over a low heat, stirring with a wooden spoon until  
smooth. Remove the pan from the heat and set aside to  
cool. In a large bowl, beat the egg and sugar together until  
thick and creamy, using an electric hand mixer.

Stir in the melted chocolate mixture, vanilla extract,  
flour and nuts using a wooden spoon. Finally mix in the  
chocolate chips. Place tablespoons of the mixture on the  
prepared baking trays, leaving approximately 10cm/4  
inches between them to allow for spreading.

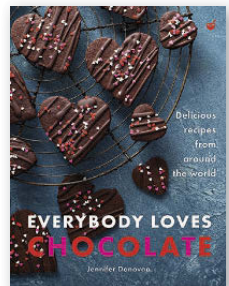
Bake in the hot oven for 6-8 minutes, or until the cookies  
are puffed and cracked, but still moist.

Remove the cookies from the oven and transfer them to a  
wire (cooling) rack to cool. Garnish with a pinch of sea salt.

### WIN A COPY OF EVERYBODY LOVES CHOCOLATE

For your chance to win a copy of Everybody Loves  
Chocolate, please email your name,  
address and telephone number to:  
[dawn@conservationnews.co.uk](mailto:dawn@conservationnews.co.uk)  
Closing date: Friday 8 February 2025

*This is an extract from  
Everybody Loves Chocolate:  
Delicious recipes from around the world  
by Jennifer Donovan  
Published by Nourish*



*A one-stop bible for chocoholics, this book offers everything you need to quench your sweet tooth cravings.*



# FOR THE LOVE OF CHOCOLATE

Nestled in the heart of Whitstable, Kakawa Artisan Chocolate and Dessert Lounge is the brain child of chocolatier and all round food expert, John Jeffrey.



Having been in the food industry for over 20 years, lockdown gave John the chance to sit back and think about what he really wanted to do with his life. Like many of us at the time, John was experimenting with different food recipes, but his experience gave him an edge, and he had soon created a series of chocolates, which he began to distribute during the pandemic following intense interest.

So popular were his products that, John realised his dream of opening his own artisan chocolate business, and the rest is history... or it would be if John was content to run just any old sweet shop.







Instead he has set his sights on bigger goals:

- To be an industry leader
- To create a zero waste business
- To pass his knowledge and passion on to the next generation.

Well in just four short years, John is well on his way to meeting all his goals. Kakawa is already a zero waste business; the store runs regular workshops for aspiring chocolatiers, and with stockists as far away as Edinburgh, the role of industry leader is tantalisingly close.

The Kakawa Dessert Lounge is open 6 days a week and serves an irresistible range of chocolate, milkshakes, waffles and more, and Kakawa products are stocked locally in Fenwick, Chartham Blue Diamond Garden Centre, Algar Lodge farmshop in Deal, and Loddington farm in Maidstone.

Details of products, stockists, workshops and menus can be found on the website, but the most important thing to note is this:

Chocolate is available everywhere... but truly exceptional chocolate is harder to come by, and Kakawa Artisan Chocolate is a rare find indeed!




KAKAWA ARTISAN  
CHOCOLATE

Phone: 01227 851918

Email: [hello@kakawaartisan.com](mailto:hello@kakawaartisan.com)

Socials - @kakawaartisan


75-77 Oxford Street, Whitstable CT5 1DA



# GILBERTS

CAFE + DELI

19 OXFORD STREET, WHITSTABLE




# The 2 BLACKSMITH'S Arms

17th century village pub, near the Pilgrims Way, set in rolling downland countryside. An inglenook log fire gives a warm welcome in winter. Good quality, locally sourced food served. No children under 14 allowed in bar or restaurant. No vegetarian options available.

Wednesday - Saturday, 7pm - 11pm (must pre-book for food)  
Sunday 4pm - 11pm. No lunches being served at present.

The Street, Wormshill, Sittingbourne ME9 0TU  
Tel: 01622 884386

# THE OLD NEPTUNE

Marine Terrace, Whitstable CT5 1EJ  
01227 272262 • [www.thepubonthebeach.co.uk](http://www.thepubonthebeach.co.uk)



## OPENING HOURS

Mon - Wed: 11.30 - 9.30pm Thurs - Sat: 11.30 - 11pm  
Sun: 12 noon - 9pm

Food served all day Saturday & Sunday from 12-4pm



Mon - Fri 12 noon - 4pm & 5pm - 8.15pm



## LIVE MUSIC

Sat Dec 8th - The Heads  
Sun Dec 15th - Blue Devils  
Sun Dec 22nd - Gumboots  
Sun Jan 5th - Dylan Band  
Sun Jan 12th - Squeeze Gut Alley  
Sun Jan 19th - Bill Saxby and The Dan  
Sat Jan 25th - The Secret Gig  
Sun Jan 26th - Native Oysters  
Sun 2nd Feb - Blue Devils  
Sun 9th Feb - Gumboots  
Sun 16th Feb - Brad Pittance  
Sun 23rd Feb - Barracuda  
Sat 1st Mar - The Secret Gig  
Sat 2nd Mar - Blue Devils

Please refer the website as bands are subject to change.  
[www.thepubonthebeach.co.uk](http://www.thepubonthebeach.co.uk)

# MACKNADE CHRISTMAS SHOP NOW OPEN!



Visit us to choose your perfect  
~ Kentish Free Range Turkey  
~ Kent Grown Christmas Tree  
~ Artisan Food & Drink Hampers  
& so much more!

## MACKNADE

SELLING ROAD | FAVERSHAM | KENT | ME13 8XF

@MACKNADE



MACKNADE.COM



SCAN ME





# WHAT'S IN SEASON

Eating seasonally means eating foods that are naturally in harvest at that time of year, and eating locally means eating food that can be grown in the UK.

seasonally is about pleasure, variety and discovery. So, what should you be looking for this winter?

**DECEMBER:** the festive season brings a traditional bounty of fresh fruit and veg. Serve sprouts and parsnips alongside your turkey, add cranberries to colourful cocktails and dates to sticky Christmas puddings.

**JANUARY:** Choose between savoury toast in the morning with creamy avocado, or sweet with tangy homemade marmalade using Seville oranges. Earthy Savoy cabbage and purple sprouting broccoli bulk out winter dinners, while lemons and limes brighten up grey days.

**FEBRUARY:** Hearty celeriac and sweet potatoes are versatile and plentiful. Leafy kale is perfect for adding freshness to your favourite winter salads and comfort dishes. For sweet treats, gorgeous grapefruit and juicy plums add vibrant colour to grey winter days.

**E**ver thought about where your food comes from? We've become used to having any food we want at any time of the year. But out-of-season produce means flying it in from overseas or using intensive farming methods such as pesticides and greenhouses to force them to grow year-round.

Eating local and seasonal food is not only more tasty and healthy, but better for the environment.

It makes for the richest, most delicious and healthy diet... we just need to make a conscious effort to discover it. Eating

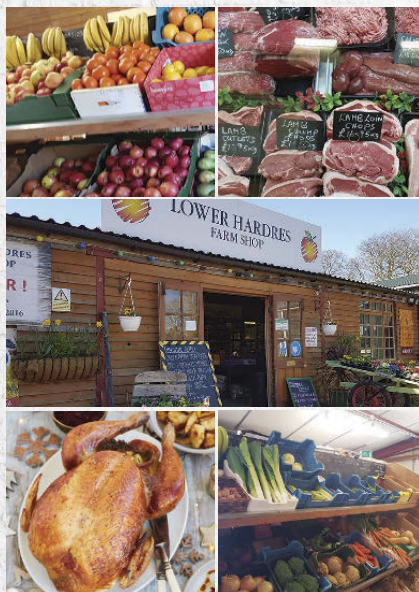




# LOWER HARDRES FARM SHOP

- In-house butchery
- Free-range geese; chickens; local game, pork, beef and lamb
- Fresh local produce
- Fruit, vegetables and salad, sourced as locally as possible
- Cheese and deli products
- Stockist of The Chai Stop finest curries
- Seasoned logs, coal and kindling
- Skinners dog food; bird food
- Local wines and ciders

Christmas  
orders being  
taken



[www.lowerhardresfarmshop.co.uk](http://www.lowerhardresfarmshop.co.uk) email: [info@lowerhardresfarmshop.co.uk](mailto:info@lowerhardresfarmshop.co.uk)  
Lower Hardres Farm, Lower Hardres, Canterbury CT4 5NU Tel: 01227 700947

## CHILHAM SHOP

Farm shop & plant centre

Canterbury Road, Chilham CT4 8DX

Tel: 01227 730348 | [chilhamshop.co.uk](http://chilhamshop.co.uk)

LOCAL DELIVERY SERVICE AVAILABLE

Serving Chilham and the surrounding villages for over 40 years with a wide range of fresh, fruit, vegetables, cut flowers, garden plants as well as a good selection of general groceries, dairy, bakery, frozen foods and much more.

Mon to Sat: 8:30am to 6pm Sun: 9am to 5pm. We also run Chilham Post Office.

Wreaths and  
Christmas  
Fayre





SMALL BATCH LONDON DRY

# WHITSTABLE HARBOUR GIN

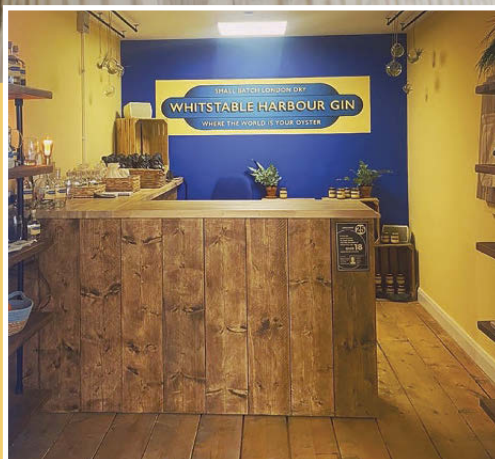
WHERE THE WORLD IS YOUR OYSTER



Come and see us at our  
Whitstable Harbour Gin Store  
- Unit 2 South Quay Shed -  
Whitstable CT5 1AB

OUR PREMIER BATCH DISTILLED JUNE 21ST

ONLINE SHOP:  
[WHITSTABLEHARBOURGIN.CO.UK](http://WHITSTABLEHARBOURGIN.CO.UK)





## ALGAR LODGE FARM SHOP & CAFE

Farm Shop | Café | Butchery |  
Deli | Bakery | Open 7 days a week

Sandwich Road, Deal CT14 0AS  
Tel: 01304 619290

## GRANNY SMITHS

— ★ —

Order your non-drop  
Christmas trees; holly  
wreaths and mistletoe.

**FREE LOCAL  
DELIVERY**  
on fruit and veg boxes

 granny\_smiths  
91 High Street,  
Whitstable CT5 1AY  
Tel: 01227 273233



Bull Green,  
Bethersden TN26 3LB  
Tel: 01233 822463

Email: [Shop@BullGreenFarm.co.uk](mailto:Shop@BullGreenFarm.co.uk)

We are a family-run farm rearing Dexter cows, sheep and chickens. We believe animals should be able to roam free in the fields and enjoy fresh air and green grass.

We have a nicely stocked shop with fresh eggs daily, home grown veg, and a variety of local products such as Kentish honey, jams, and occasionally freshly baked cakes. We also have a freezer packed with locally made pies and tasty treats.





# THE OYSTER PEARL

## PUB & RESTAURANT



FOR LOCALLY SOURCED & FRESHLY  
PREPARED DISHES EVERY DAY

British and Pan-Asian cuisine. Serving high quality and creative dishes.



185 FAVERSHAM ROAD, WHITSTABLE CT5 4BJ • TEL: 01227 272705

[WWW.THEOYSTERPEARLRESTAURANT.COM](http://WWW.THEOYSTERPEARLRESTAURANT.COM)







*This harvest pie is packed with canned lentils and vegetables and uses potato and leek soup to bring everything together for a hearty and savoury supper.*

# A COOKBOOK FOR WINTER

Get cosy with this comforting collection of seasonally inspired recipes – the ideal cook's companion for the winter months. Featuring more than 95 recipes for winter eating and entertaining, from soups and stews to melted cheese, pasta, pies and puddings, plus warming hot drinks, this book provides all the inspiration you will need.

**SERVES**  
**4**

## YOU WILL NEED

500 g ready-made puff pastry  
1 egg, whisked  
2 x 400-g cans green lentils, drained and rinsed  
400-g can baby carrots and petit pois, drained and rinsed  
400-g can green beans, drained and rinsed  
400-g can potato and leek soup  
25 g plain flour, plus extra for dusting  
15 g butter, diced  
1 teaspoon dried mixed herbs  
1 teaspoon salt  
1/2 teaspoon freshly ground black pepper  
1/2 teaspoon curry powder  
a 28 x 20 cm/11 x 8 inch baking pan

## HARVEST PIE

### METHOD

Preheat the oven to 200°C fan/220°C/425°F/Gas 7.

Cut the block of pastry in half and roll out one half on a floured work surface to about 3 mm/1/8 inch thick. Use this to line the baking pan, allowing the pastry to overhang the top lip of the pan. Line with baking parchment and baking beans (or raw rice, etc.) and blind bake in the preheated oven for 20 minutes. Remove from the oven, remove the parchment and baking beans, then brush with some of the whisked egg and return to the oven for another 5 minutes.

In a mixing bowl, gently fold all the remaining ingredients together. Pour into the baking pan on top of the cooked pastry and level out with the back of a spoon. Roll out the remaining pastry to cover the top, crimping around the edges to seal.

Pierce the top with a sharp knife to help the steam release, brush with the remaining egg and season the top.

Bake in the oven for a further 30 minutes or until the top is golden. Leave to rest for at least 15 minutes to allow the filling to set before serving.

SERVES  
6

## YOU WILL NEED

8 large plums  
3 pears  
250 g fresh blackberries  
1 tablespoon crème de cassis  
(optional)  
4 tablespoons soft  
brown sugar

## COBBLER TOPPING

180 g plain flour  
11/2 teaspoons baking  
powder  
a pinch of salt  
75 g unsalted butter, diced  
50 g granulated/caster sugar  
125–150 ml buttermilk

## CINNAMON CRÈME FRAÎCHE

150 g crème fraîche  
2 teaspoons icing sugar,  
sifted  
a little ground cinnamon  
  
a 2-litre Dutch oven

# BAKED ORCHARD FRUIT COBBLER WITH CINNAMON CRÈME FRAÎCHE

## METHOD

Preheat the oven to 170°C fan/190°C/375°F/Gas 5.

Halve, stone and thickly slice the plums. Peel, core and thinly slice the pears. Wash and dry the blackberries. Place the fruit in a bowl, add the cassis, if using, and brown sugar, and stir well to combine. Transfer the fruit to the Dutch oven.

To make the topping, sift the flour, baking powder and salt into a bowl and rub in the butter to make fine crumbs. Stir in the sugar. Work in enough buttermilk to bring the mixture together to make a slightly sticky dough. Spoon mounds of the topping over the fruit layer, allowing some fruit to remain uncovered.

Transfer the Dutch oven to the preheated oven and bake uncovered for about 30–35 minutes until the topping is risen and golden and the fruit is oozing rich juices. Check halfway through and cover the pan with the lid if the top is beginning to over-brown.

Meanwhile, make the cinnamon crème fraîche. Stir the crème fraîche, sugar and cinnamon together until combined. Serve with the fruit cobbler.

## WIN A COPY OF A COOKBOOK FOR WINTER

For your chance to win a copy of *A Cookbook For Winter*, please email your name, address and telephone number to:

**dawn@conservationnews.co.uk**

Closing date: Friday 8 February 2025

*This is an extract from  
A Cookbook for Winter published by  
Ryland Peters & Small (£22)  
Photography © Ryland Peters & Small*







*This versatile dish can be easily adapted to any time of year, using pretty much any fruit you like.*





OPENING TIMES  
Lunch: Tue - Sun 12 noon - 2.30pm  
Evenings: Tue - Mon 6pm - 9.30pm

Now taking Christmas bookings



COME AND DINE WITH  
US AT OUR NEWLY  
EXTENDED BAR AND  
RESTAURANT



Birdies is one of Whitstable's oldest family run restaurants, serving brilliant locally caught fresh fish features alongside great French classics.

41 Harbour Street, Whitstable CT5 1AH Tel: 01227 265337  
[www.birdiesrestaurant.co.uk](http://www.birdiesrestaurant.co.uk)

# PINOT NOIR goes global

THERE IS NOW MORE FABULOUS AND BEAUTIFUL PINOT NOIR BEING MADE IN THE WORLD THAN EVER BEFORE: FROM OREGON TO CALIFORNIA, TO GERMANY TO NEW ZEALAND, AND OF COURSE FRANCE. BUT PINOT NOIR HAS ALWAYS BEEN A TRICKY GRAPE TO GROW, BECAUSE IT DOESN'T ALWAYS FOLLOW THE RULES.

Until quite recently, Pinot Noir was judged on how similar it was to red Burgundy, which is where Pinot Noir is famous for its excellence. But then winemakers started to wake up and realise that, rather than try to emulate the style of Pinot Noir from Burgundy, why not make a fantastic wine that is unique to its own growing environment and love it for its individual style!

So today, we have a range of exciting different styles of Pinot Noir from lighter versions with cherry and strawberry flavours to heavier, weightier styles with a gamey, savoury character.

The general consensus is that Pinot Noir grows best in cool climates such as New Zealand and even England, but some fantastic wines have been made in the warmer regions of California where there is a cooling influence.

## PINOT NOIR AROUND THE WORLD

### France

In Burgundy, the Cote d'Or is where the top wines are made and the surrounding areas of Cote Chalonnaise, Auxerrois







grape in Champagne, but it merely adds structure and body to the wine. It accounts for 38% of the area under vine in Champagne and is the dominant grape in Montagne de Reims and Côte des Bar. The name Blanc de Noirs refers to a Champagne made from black grape varieties alone, such as Pinot Noir and/or Meunier and actually means white from black. So the flesh alone without the skins makes

and Maconnais produce more 'affordable' wines which tend to be less complex than those from the Cote d'Or. Red Burgundy from the top vineyards have their own distinct styles and recognisable flavours, but given the complexity of the structure of vineyards in this region, it needs a high level of expertise to determine exactly where the wines come from in a blind tasting! As a result, there is no one single flavour profile – some are chewy and plummy, some are muscular and dense, whilst others are soft, round and scented with strawberries.

In Champagne, Pinot Noir never reaches the same ripeness as for red wine, as varietal character is not the aim for this

the juice and gives its colour to the wine which, of course, is white.

### **Germany**

Germany is the third largest grower of Pinot Noir in the world, after France and the USA. The best Spatburgunders (as Pinot Noir is known here) lie between a pale, lightish style to a more full-bodied style from the warmer, more sheltered regions such as Baden and Pfalz which are naturally two of the best regions to grow and ripen Pinot Noir in Germany. Baden is the most southerly and therefore the warmest of the wine growing regions, and Pfalz is uniquely placed as a natural extension of Alsace.

The Vosges mountain range in Alsace extends into Germany and becomes the Haardt Mountains which provide sufficient rain-cover, coupled with solid diurnals (marked changes in day and night temperatures) and you have what is a relatively warm climate, given the region's geographical location. Wurttemberg and Rheingau are also warm enough to ripen



this grape as they benefit from proximity to rivers which help radiate heat to the vines and give protection from winds from the mountains as well as relatively warm summers. Wines from these regions are not as complex as those from Burgundy but have pleasant, ripe cherry and raspberry flavours and medium alcohol.

### **New Zealand**

This region is of course famous for Sauvignon Blanc, but it also has a reputation for producing

some of the best Pinot Noir in the world, with no shortage of cool sites but lots of sunshine. The most notable regions are Martinborough in North Island, Marlborough in South Island and Central Otago (further south). Pinot Noir from Marlborough tends to be lighter than most Central Otago Pinots, similar in hue to those of Martinborough and the aroma

profiles are generally very fruit-forward. They mostly have red fruit, raspberry and cranberry, although some tend more towards black fruit with notes of cherry. Wines from Central Otago, however, can be weightier with undertones of shrubbery and savoury notes with tannins in general tight and focused.

### **USA (California and Oregon)**

You might think that California is too hot for such a delicate grape as Pinot Noir, but along

the central coast the key characteristic is the east/west-positioned valleys that allow Pacific fogs to roll right in and cool the vineyards. This creates the ideal conditions for a silky, strawberry, cranberry and cherry-scented Pinot that won't break the bank.

Historic ranch lands, a romantic coast, country roads, stay-a-while towns, and grapes – lots and lots of grapes – make the Central Coast an outstanding wine country destination. Top vintners have transformed the Central Coast into one of the state's premier wine regions, with hundreds of wineries and expansive farmlands reminding you that more than grapes grow in this fertile region.

Continue south towards Santa Barbara County to discover Pinot Noir paradise, as coastal fog filters through the east-west oriented valleys to create one of the state's most diverse winegrowing regions. Even with the cooling fog this region is warmer, and notice the fuller body, higher alcohol in the wine but also a soft, velvety character.

Wines from the Russian River valley and Carneros are darker than those from the Central Coast, with black cherry as opposed to strawberry flavours and slightly weightier and a little pricier as well.

Oregon's Willamette Valley is a world-leading producer of Pinot Noir, with the grape accounting for over 60% of the region's wine production. The valley's unique climate and geography, along with its diverse soils, create ideal conditions for growing Pinot Noir.

Pinot Noir from Oregon is often described as having bright red fruit flavours like cherry and raspberry, with delicate floral notes and a subtle earthiness. It can also be dry, spicy, and herbal, with underlying red or dark fruits. More heavily oaked wines may have notes of cinnamon and vanilla. Oregon Pinot Noir tends to be more acidic, fresher, and less fruit-forward than Californian but improved winemaking techniques, better clones and experimentation are producing wines that just get better and better!

Pinot Noir's subtle flavours make it an excellent choice for a range of dishes, from complex meat and poultry meals such as those we have at Christmas to lighter fish dishes such as salmon or trout, or even vegetable based. The lighter tannins in this wine make it very food friendly and it is one of the most amazing grapes on the planet – literally there is a style to suit everyone – why not shop around to find your favourite?

*Rowena Hawtin DipWSET*





# CONSERVATION NEWS

PERIOD HOMES • RENOVATION • INTERIORS • GARDENS • FOOD

## CONSERVATION NEWS

West Kent & The Weald

Spring 2023 • Complimentary

A warm welcome  
MAKING THE MOST OF YOUR HALLWAY



Creating a  
BOOT ROOM

PERIOD HOMES • RENOVATION • INTERIORS • GARDENS • FOOD

## CONSERVATION NEWS

Kent

Autumn 2023 • Complimentary

The versatility of  
KITCHEN ISLANDS  
AUTUMN  
decorating trends



PERIOD HOMES • RENOVATION • INTERIORS • GARDENS • FOOD

## CONSERVATION NEWS

West Kent & The Weald

Summer 2023 • Complimentary

GORGEOUS  
Garden buildings  
Bespoke design  
YOUR UNIQUE HOME



PERIOD HOMES • RENOVATION • INTERIORS • GARDENS • FOOD

## CONSERVATION NEWS

Kent

Winter 2022 • Complimentary

Choosing  
a bath tub  
for your period home



Creating a  
FOCAL POINT

PERIOD HOMES • RENOVATION • INTERIORS • GARDENS • FOOD

## NEVER MISS A COPY

Take out a subscription and we'll deliver every issue direct to your door.

Visit [conservationnews.co.uk](https://www.conservationnews.co.uk)

A stylish & modern kitchen designed to suit you



Hogwood  
— House  
BESPOKE KITCHEN DESIGN

6c Strand Street Sandwich Kent CT13 9DZ | 01304 784378  
Email: [info@hogwoodhouse.co.uk](mailto:info@hogwoodhouse.co.uk) | [www.hogwoodhouse.co.uk](http://www.hogwoodhouse.co.uk)