

# CONSERVATION NEWS

West Kent & The Weald

Winter 2024 • Complimentary

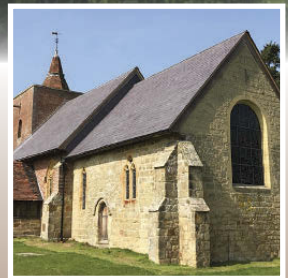
Bring light into  
your period home



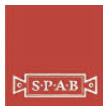
VICTORIAN  
kitchens & bathrooms

# Ashford & Cranbrook Roofing<sup>TM</sup>

— Experts in heritage roofing —



[www.cranbrookroofing.co.uk](http://www.cranbrookroofing.co.uk)



**Tel: 01580 242925**



# WINTER 2024 Welcome



The winter months can be a struggle: cold dark days and the aftermath of a hectic Christmas can take their toll on our energy levels and mood, so it's important that we fill our lives with wonderful things to lift the spirits while we await the coming of spring.

Here at Conservation News we know just how to find a little light in the dark – quite literally in our feature on bringing light into your home!

We've also got delicious chocolate recipes to tickle the taste buds, home features to help you make your living spaces an oasis of comfort and calm, and gardening features that help you see that nature can be beautiful even when the skies are grey.

So settle in with Conservation News and welcome in the new year with us!

*Dawn and Nadene*

*Competition winner from our autumn issue:  
Sarah Sutton from Maidstone*



**CONSERVATION NEWS**  
conservationnews.co.uk

*Publisher*  
Conservation News

*Contributors*  
Susan Hubbard  
Liz Norton  
Louise Tomlin  
Rowena Hawtin

Cover:  
oka.com  
*Design*  
Lynn @ Dandelion Design  
*Editor*  
Dawn Long

*Sales Manager*  
Nadene Weed  
Tel: 07515 157795  
nadene@conservationnews.co.uk



© Conservation News 2024  
If you receive your copy of Conservation News by Royal Mail and wish to opt out, please send an email to dawn@conservationnews.co.uk

All rights reserved.  
Reproduction of any part of this magazine is not permitted without written permission of the publisher.  
The publisher accepts no responsibility of any loss or damage in respect of any product or service that may be advertised.



FAIRFAX GALLERY



Shaun Ferguson 'Accordian VII' Acrylic on Canvas 96 x 86cm £8100

Over 100 original contemporary paintings and sculpture by established, award-winning and emerging artists.

23 The Pantiles, (Lower Walk), Royal Tunbridge Wells  
[www.fairfaxgallery.com](http://www.fairfaxgallery.com) (Est. 1995) Tel: 01892 525 525





# WINTER 2024 Contents



- 8 Winter gardening**  
What to do in the garden now
- 15 Hip hip hooray!**  
Enliven the winter garden with rosehips
- 21 Victorian design**  
William Morris
- 29 Eclectic grandeur**  
Identifying the key features of a Victorian house
- 37 Choosing the right kitchen & bathroom**  
for your Victorian home
- 45 A light touch**  
How to bring more light into your period home
- 61 Plaster craft**  
Add character to any room with plaster ornamentation
- 75 Putting the heart back into Hartridge House**  
A fascinating project by renovation experts AT Palmer
- 88 What's in season**  
Shop fresh & local this winter
- 90 Winter recipes**  
Two recipes from A Cookbook from Winter
- 95 Rowena's wine column**  
Savouring Pinot Noir



## DIRECTORY

AHM Installations  
 Bonmarche  
 Bricks Coffee House  
 Charterwood Mobility  
 Shopmobility  
 Coffee Corner Restaurant  
 Cotswold Outdoor/  
 Runners Need  
 Cotton Traders  
 Edinburgh Woollen Mill  
 FineLine Windows,  
 Doors & Conservatories  
 Gymfinity & Nursery  
 Johnsons Garden Buildings  
 Klass Collection  
 Maidenhead Aquatics  
 Monkhouse Schoolwear  
 Specialists  
 Notcutts Garden Centre  
 Notcutts Home & Gift Shop  
 Pavers  
 Pennies Day Nursery  
 Pure Beauty Essentials  
 Pure Hairdressing  
 Sussex Beds  
 The Butcher of Brogdale

### PURE HAIR & BEAUTY

Get festive ready,  
 book in for a full  
 range of beauty  
 & hair treatments.  
 Lash studio &  
 tanning rooms. Gift  
 Vouchers available.



**BON MARCHE**  
 Ladies clothes and  
 fashion at prices  
 you'll love.



### SUSSEX BEDS

Come and visit our huge  
 showroom today, for expert  
 advice and to try our range of  
 beds and mattresses.



### THE BUTCHER OF BROGDALE

Quality meats and sausages,  
 great value and choice.  
 Christmas orders and offers.



**EDINBURGH WOOLLEN MILL**  
 For all the latest men's and women's  
 knitwear and Countrywear styles.  
 Perfect for festive gifts...Stop by  
 today to see what's in store!



**BRICKS COFFEE HOUSE**  
 Relax and meet friends inside  
 and out. Barista made coffee,  
 teas, frappé, milkshakes,  
 cakes, paninis and more!



### PAVERS

Discover the secret behind the  
 comfort with our range of men's  
 & women's shoes and boots.



### COTTON TRADERS

Shop women's and men's  
 casual clothing and footwear  
 in our brand new store.



**Newnham Court**  
**Shopping Village**

Just off junction 7, of the M20, Maidstone  
 MONDAY TO SATURDAY 9.00am to 5.00pm  
 SUNDAY 10.30am to 4.30pm  
 AMPLE FREE CUSTOMER PARKING





# Festive Inspiration

## at Newnham Court Shopping Village

*For you, your home  
and garden*



### **NOTCUTTS GARDEN CENTRE**

Explore the winter wonderland – lights, trees, decorations. Gifts for family and friends. Luxury foods and drinks. Indoor plants, wildlife and pet food and requisites.



**VISIT OUR WEBSITE**  
[www.newnhamcourt.co.uk](http://www.newnhamcourt.co.uk)







## Natural decorations

Bare stems revealed in winter offer a range of ornamental opportunities. Bring some dried seedheads inside, along with bright stems, such as willow and cornus, and some holly for decorations including wreaths or make woodland-inspired foliage pendants or wine glass stem decorations using eucalyptus sprigs.



## PRUNE GRAPES

Early winter is the best time to prune grape vines.

Leave it too late and pruning cuts are likely to bleed sap and weaken the plant.

Lop your vine back to a basic minimal framework. Don't be afraid to be radical: grape vines only fruit on new growth.



# GARDEN NOTES

Even though it's cold outside, winter gardening allows you to keep your garden thriving.

It is an important time to prepare your garden beds and plan for the season ahead to ensure your efforts lead to a productive and beautiful garden all year round.



## WINTER WALKS

Wrap up warm and blow away the cobwebs by taking a stroll in the gardens of Hever Castle where the warm winter bark of the redwood trees glows against the winter sky. Hever's yew topiary looks fantastic with a covering of snow or frost and the majestic hellebores nod gracefully in the winter sun. [hevercastle.co.uk](http://hevercastle.co.uk)



The Bedgebury Pinetum becomes adorned with colourful lights, turning into a magical wonderland by night. There are singing trees, colour changing lights, giant baubles and snowflakes. [forestryengland.uk/bedgebury](http://forestryengland.uk/bedgebury)



## Winterise the greenhouse

Don't forget to winterise the greenhouse. Make sure plants stay healthy and pest-free, keep harvesting winter salads and watering and feeding overwintering citrus plants when needed. If you can heat your greenhouse, do so, either with an electric warmer or a simple paraffin one. If your greenhouse is unheated, wrap plants in a frost protection blanket or bubble wrap during severe cold snaps, making sure you remove the covering when the temperature rises to prevent rotting.

## Plants for winter colour

**Camellia 'Yuletide'** – a bushy, evergreen shrub covered in polished foliage and has brilliant red flowers.



**Holly 'Argentea marginata'** – a cultivar producing abundant red berries. Evergreen hollies are easy to grow, succeeding on most soils. Best planted as young container plants any time of year. They respond well to pruning, making them excellent subjects for topiary and training as standards.



## What to do in the garden now

- During mild winters, you can still plant fruit trees, shade trees and flowering trees.
- When temperatures are below freezing, plant new evergreens, rose bushes and shrubs.
- Prune shrubs and deciduous shade trees.
- Keep up with raking.
- Put a compost pile on top of your garden to protect bulbs and perennial plants from frost.
- Spread out a layer of mulch over your garden.
- Do maintenance on your garden tools.
- Think of the plants that you're going to grow next year, and sketch out plans.

## Grow it, cook it, eat

Winter doesn't mean it's the end of the growing season. If you've really got into growing your own fruits and vegetables, with all their environmental and health benefits, and are looking for kitchen garden ideas that extend into winter, there are many delicious crops that flourish in the colder months. Carrots are just one example and make a perfect side dish to your Sunday roast.





# KENT LEISURE BUILDINGS



We have a new range of composite garden rooms



Show site open 7 days | 01959 534242  
London Rd, Halstead, Kent TN14 7DY  
[www.kentleisurebuildings.co.uk](http://www.kentleisurebuildings.co.uk)

*Enhance your outdoor living space*



Verandas • Glass Rooms • Awnings • Pergolas  
Carports • Solar Garage Doors & Shutters



SBI Ltd 0800 0742 721 [sbiproducts.co.uk](http://sbiproducts.co.uk)



Outdoor Kitchens | Premium BBQs  
Charcoal & Wood-fired Ovens | Outdoor Stoves  
| Open Fire Grills | BBQ Accessories



Unit 5 & 11, Brook House, New Hythe Lane,  
Aylesford ME20 6GN

Wed-Sat 10am - 4pm, or by appointment  
sales [@northbarbeque.co.uk](mailto:sales@northbarbeque.co.uk)

01622 824079 [www.NorthBarbeque.co.uk](http://www.NorthBarbeque.co.uk)



# THE PATIO > WAREHOUSE



UNIT 3, ASHMILL BUSINESS PARK, ASHFORD RD, LENHAM, ME17 2GQ. TEL: 01622 231399  
 W. [WWW.THEPATIOWAREHOUSE.CO.UK](http://WWW.THEPATIOWAREHOUSE.CO.UK) E. [INFO@THEPATIOWAREHOUSE.CO.UK](mailto:INFO@THEPATIOWAREHOUSE.CO.UK) F. [INTHEPATIOWAREHOUSE](https://www.instagram.com/inthepatiowarehouse)  
**OPEN TO THE PUBLIC AND TRADE 7 DAYS A WEEK**

## OUTDOOR LIVING LENHAM

OPEN 7 DAYS



### PERGOLA **SALE** UP TO £1000 OFF PERGOLAS

Pergolas, Gazebos, Garden Buildings | Garden Furniture to include Dining Sets,  
 Lounge Sets, Benches, Bistro Sets, Garden Kitchens, BBQ's, Fire Pits,  
 Outdoor Mirrors, Ornaments, Pots and so much more!

Unit 2, Ashmill Business Park, Ashford Road, Lenham ME17 2GQ [info@outdoorlivinglenham.co.uk](mailto:info@outdoorlivinglenham.co.uk)  
[www.outdoorlivinglenham.co.uk](http://www.outdoorlivinglenham.co.uk) 01622 231399

# Christmas at Coblands

It's getting festive at Coblands Garden Centre! Whether you're decorating your home or finding the perfect gifts for your plant crazy loved ones, our garden centre has everything you need to celebrate the season in style.

## Explore our Christmas Shop

Step into the festive season with our beautifully curated Christmas Shop, where holiday magic comes to life. Explore unique enchanting woodland-themed ornaments, exquisite handmade baubles, elegant Christmas wreaths, and shimmering lights for both indoors and outdoors.

Looking for something special? Discover our collection of home décor and thoughtful plant care sets – perfect for bringing joy to the garden enthusiasts among your friends and family.

## Real trees for a real Christmas

A traditional fir tree – the ultimate centrepiece! At Coblands, we pride ourselves on offering the very best. Whether you're after a towering 9ft showstopper or a cosy pot-grown tree, our carefully selected range has something for every space and style. Our Nordmann fir trees offer the perfect shape, soft foliage, and glossy, dark green needles. These trees have strong branches ideal for showcasing your favourite ornaments. Available in sizes ranging from 1.5 to 2.7 metres (5 to 9 feet).



## Indulge in festive delights at Cornflower Café

Our Festive Afternoon Tea is served daily from 12pm to 2:30pm for just £14.95 per person. Enjoy a selection of delicious festive sandwiches with mince pies, macaroons, cream cake slices, and chocolate-dipped strawberries. And of course, no tea would be complete without freshly baked scones served with clotted cream and jam, all accompanied by your favourite hot drinks. Pre-booking is required 48 hours in advance – email [info@coblandsgardencentre.co.uk](mailto:info@coblandsgardencentre.co.uk) or visit our website.





# Christmas

AT COBLANDS

Step into the festive season with us and explore everything you need to make your home merry and bright.

From **beautiful real Christmas trees** and **enchanted decorations** to sparkling **indoor & outdoor lights** and **unique festive gifts**, our Christmas shop is fully stocked and ready to bring the holiday magic to you!

GARDEN CENTRE  
MON-SAT 8AM - 4:30PM  
SUN 10AM - 4PM  
CORNFLOWER CAFE  
OPEN 9AM - 4PM

Dryhill Lane, Sundridge, TN14 6AA



  
**COBLANDS**  
GARDEN CENTRE & CAFÉ  
Helping gardeners since 1963



## FESTIVE AFTERNOON TEA



Available every day from 12pm to 2:30pm, for just £14.95 per person.

Indulge in our festive menu, featuring turkey, bacon, and cranberry sandwiches, mince pies, macarons, cream cake slices, and chocolate-dipped strawberries. Paired with freshly baked scones, served with rich clotted cream and jam, complemented with your favourite hot drinks.

All afternoon teas must be booked 48hrs in advance, you can book via our website [www.coblansgardencentre.com](http://www.coblansgardencentre.com)





PEST CONTROL & WILDLIFE MANAGEMENT

## Pest Control and Wildlife Management

Established in 2013, we are a small family-run business based in Kent with over 60 years combined experience in the industry.

Our team provides domestic and commercial clients in the South East and includes fox control in the London areas.

- Rodent control
- Insect control
- Bird control
- Fox pest control

24hrs 01622 470077  
Mobile 07919 262797  
Email [rob.long@sabrekent.co.uk](mailto:rob.long@sabrekent.co.uk)  
Website [www.sabrekent.co.uk](http://www.sabrekent.co.uk)



## Constructed and resurfaced in Kent, Sussex and Surrey



Please call  
Martin for free  
advice and  
quotations

Tel: 01424  
892265  
07831 643835

[www.martingurr.co.uk](http://www.martingurr.co.uk)





# HIP HIP HOORAY!

Roses grace the garden with gorgeous blooms, fragrance, and form. They also produce beautiful rosehips! Extend the interest in roses by fostering hips that enliven the winter garden in all sizes, shapes, and colours.

Now the autumn has given way to winter and the timely cold weather is upon us many British growers will be lifting their roses for the start of the bare root planting season.

November through to March is the best time to plant roses and bare root stocks are cheaper than potted plants later in the season.

Roses bring so much to the garden with their exquisite flowers and fragrance but many species and varieties have another hidden gem that only reveals itself as the summer ends: rosehips!

It's one of my favourite features of many roses and one that brings pure joy when other areas of the garden are diminishing. Amongst the

barley and umber colour of the autumn garden sparkle little jewels of colour. Iridescent with rain drops and sugar-coated in the frost, they bring colour and drama to any outdoor space.

Beyond their ornamental value, rose hips provide wildlife with a winter food source and are a great source of vitamin C for us as well as the birds. Rosehips can be collected and easily turned into jelly or jam with just a little effort. They are also beautifully decorative to bring inside the home. The stems and sprays can be used to make wreaths and garlands – let your imagination run wild!

There are roses with hips for every situation from large areas to pots on the patio.





IN ORDER TO ENJOY THE HIPS DEADHEADING HAS TO STOP BY MID AUGUST SO THAT THE FLOWERS CAN DEVELOP INTO ROSEHIPS FULL OF SEEDS. WAIT UNTIL JANUARY TO PRUNE THEM AFTER THE HIPS HAVE NATURALLY WITHERED.

Some of my favourite roses for their hips are:

*Rosa Rugosa* has large, rounded orange hips abundantly produced and long lasting. This wild rose is ideal for informal hedging and coastal gardens with bare root plants being sold at a very reasonable price.

*Rosa Glauca*, one of my absolute favourite varieties. Striking grey-blue foliage and glowing single pink flowers give way to small, perfectly round, dark red hips.

*Rosa Canina* or Dog Rose is a great choice for wildlife gardens, its hips are beloved by birds and make excellent syrup. Earlier in the year the pale pink delicate flowers have bright yellow stamens attractive to bees and hoverflies.

Rambling rose *Rosa Filipes* 'Kiftsgate' is a great rose for covering a large wall or climbing into a large tree. It bears clusters of white, open flowers in the summer followed by large sprays of small red hips.

*Rosa Pimpinellifolia* also known as the Scotch rose is a smaller rose with creamy white flowers and the most enchanting deep purple, almost black, shiny hips. It thrives in sandy soil

and will happily grow on chalk.

*Rosa Moyesii* 'Geranium' is a large shrub rose that can be grown as a climber with bright coral flowers during the summer followed by fantastically shaped elongated orange red fruits.

*Rosa Dannahue* is a new variety modern shrub rose by David Austin that is perfect for a pot. It has dusky apricot yellow blooms that have an old-fashioned quality and an exquisite scent. They are followed by orange rounded hips.

Getting creative with your rose hips is the fun bit, there are many things to make and do.

They are also delicious and packed with antioxidants and vitamin C, perfect for boosting your immune system. However they cannot be eaten whole straight from the plant as they contain tiny hairs around the seeds that irritate the throat and stomach. The jelly inside the hip has to be extracted. The simplest way to do this is to squeeze the hip near the end that was attached to the branch. You will see the soft orange jelly escape. This can be eaten raw or prepared into rosehip jelly.





THINK ABOUT PLANTING SOME ROSES THIS WINTER FOR A BEAUTIFUL AND LONG SEASONAL DISPLAY THAT EXTENDS BOTH THE AESTHETIC AND WILDLIFE BENEFITS OF YOUR GARDEN.

## *Creating a rose hip wreath*

Why not use rose hips to create a beautiful, natural wreath? The rich red and orange hues are perfect for Christmas and look great alongside pinecones, evergreen branches, and dried flowers.

Start by wrapping moss or ivy around a wire or natural wreath frame. Add sprays of

rosehips along with other foliage by tying in small bunches with fine wire and working around in a circle clockwise from the top, fastening each bunch close to the next at a slight angle away from the centre of the wreath.

Finish with a ribbon to hang it.

## Making rosehip jelly

- Collect hips, wash, dry and cut in halves.
- Cover with cold water in a stainless steel pan and add an apple cut in half to the water.
- Bring to the boil and simmer until the hips are mushy. Remove the apple.
- Strain the liquid through a piece of muslin or a jelly bag.
- When all the liquid has passed through the bag, measure the juice in a measuring jug and pour into a clean pan.
- Bring to the boil and add 500g of jam sugar for each ½ litre of liquid, boil until setting point is reached and you see the consistency turn from liquid to a thicker syrup. It should take between 5 and 15 minutes.
- Pour into clean jars, and cover.

Use as a spread, a daily tincture, add to gravy, stews, porridge and whatever else you fancy.

Bare root roses are available from many British rose growers, including here in Kent and are available to order online.

MY FAVOURITE GROWERS ARE:

**Rumwood Nurseries**, Langley, Maidstone  
([rumwoodnurseries.co.uk](http://rumwoodnurseries.co.uk))


**David Austin Roses**, Albrighton, Shropshire  
([www.davidaustinroses.co.uk](http://www.davidaustinroses.co.uk))

**Peter Beale Roses**, Norwich, Norfolk  
([www.peterbealesroses.com](http://www.peterbealesroses.com))

So think about planting some roses this winter for a beautiful and long seasonal display that extends both the aesthetic and wildlife benefits of your garden into the darkest months of the year.

If you'd like advice on planting roses during this bare root season or designing roses into your planting schemes I would love to hear from you.

[Sarah@thegardencreative.com](mailto:Sarah@thegardencreative.com)  
07725055701 @thegardencreate  
[www.thegardencreative.com](http://www.thegardencreative.com)



WHEN COLLECTING ROSEHIPS REMEMBER TO ONLY TAKE WHAT YOU NEED AND LEAVE SOME FOR THE BIRDS. BIRDS LIKE THRUSHES, FINCHES, AND BLACKBIRDS RELY ON ROSE HIPS AS A VITAL FOOD SOURCE.



# **Hoist & Co Fencing & Timber Supplies Ltd**



✓ A family-run local fencing company operating for over 35 years

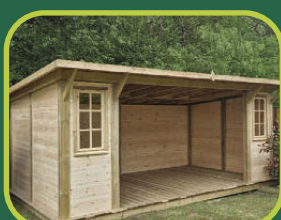
✓ Manufacture and fitting of sheds and summerhouses made to your specification

✓ Trade and domestic customers welcome



**OUR YARD HOLDS A WIDE SELECTION OF FENCING AND BUILDING MATERIALS**

Open Monday to Friday  
8am to 5pm  
Saturday 8am to 1pm



**Call 01732 823826 or visit [www.hoistfencing.uk](http://www.hoistfencing.uk)  
Bonnyacre Farm, Wrotham Road, Culverstone, Kent DA13 0RF**



**Pearson's**  
Landscapes Limited  
*Your Outdoor Specialists*

**We provide top quality landscaping and gardening services in Kent, with our customers always returning due to our friendly, reliable and professional approach**



Garden & landscape design • Full maintenance service • All fencing (supply & install) • Decking & Pergolas  
Hedge trimming & pruning • Garden & lawn care • Driveways, patios & retaining walls  
Garden, scrub & woodland clearance • Pond & lake construction • Bespoke garden structures  
24 hour reactive service for downed fences & trees

**01622 232550 • [info@pearsonslandscapes.co.uk](mailto:info@pearsonslandscapes.co.uk) • [pearsonslandscapes.co.uk](http://pearsonslandscapes.co.uk)**





**CURVE**

garden rooms ltd

Beautiful, bespoke-designed, fully finished rooms with the highest quality features, including underfloor heating for year round use. Superb value, expertise and friendly service ensure complete satisfaction.

[www.curvegardenrooms.com](http://www.curvegardenrooms.com)

07966 680812

[garry@curvegardenrooms.com](mailto:garry@curvegardenrooms.com)



**THE GARDEN  
CREATIVE**

GARDENS FOR PEOPLE & WILDLIFE by Sarah  
[thegardencreative.com](http://thegardencreative.com) @thegardencreate

07725055701



- Victorian design -

# WILLIAM MORRIS



WILLIAM MORRIS WAS UNDOUBTEDLY ONE OF THE MOST ORIGINAL AND RADICAL CREATIVE FORCES OF THE 19TH CENTURY.

William Morris was a revolutionary force in Victorian Britain: his work as an artist, poet, designer, craftsman, writer and socialist dramatically changed the fashions and ideologies of the era. Any one of those occupations would have been enough for most men but he excelled in all these roles.

In the design world, Morris is known for his textiles (and accompanying wallpapers), which tend to feature romantic, nature-inspired

patterns. But, as was core to the ethos of the Arts and Crafts movement, these goods were part of a much larger ecosystem, one which bridged art and design (and past and present, and lifestyle with the goods that surrounded it).

Today, he is still known as a designer of wallpaper and fabric, and by extension, of notecards, gift wrap, scarves and more.

His wallpaper and fabric designs have never been out of production since 1864.



*Larkspur wallpaper fabricsandpapers.com*



### FRUIT WALLPAPER

Based on natural forms and patterns, Morris' designs appeal to a wide range of people, and are as suitable for an historic house as a modern one.

This vibrant design features lemons and red pomegranates hanging from sage green leafy branches, with accents of orange from small flowers. The textured design sits on a cream base. A colourful, warming wallpaper perfect for country cottage interiors.





## A REVOLUTIONARY FORCE

As a pioneer of the Arts & Crafts movement, Morris fundamentally believed “that the decorative and domestic are as important as the art on the walls of our national galleries,” says Keren Protheroe, Archivist at Morris & Co., the company Morris founded in 1861, and which is now owned by Sanderson Design Group.

Bluebell Footstool £730,  
Sofa.com

Tea Tin £10 [vam.ac.uk/shop](http://vam.ac.uk/shop)



Strawberry Thief lampshade,  
£195 [tinkerandtallulah.co.uk](http://tinkerandtallulah.co.uk)



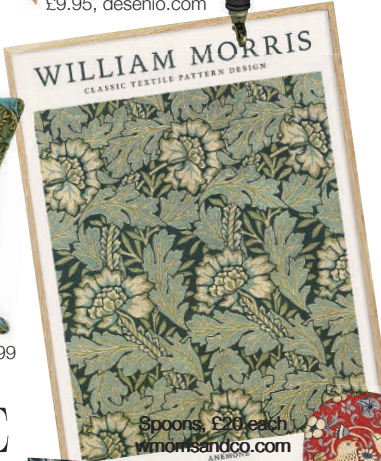
Anemone poster,  
£9.95, [desenio.com](http://desenio.com)



Morris and Co Fruit &  
Honeysuckle Mugs (Set of 2), £30,  
[wayfair.co.uk](http://wayfair.co.uk)



Chrysanthemum cushion £35.99  
[wayfair.co.uk](http://wayfair.co.uk),



Spoons, £20 each  
[wmorrisandco.com](http://wmorrisandco.com)

# GET THE LOOK



Wilhelmina Teal fabric,  
[emanuels.co.uk](http://emanuels.co.uk)



Oven glove, £11.99,  
[wayfair.co.uk](http://wayfair.co.uk)



Notebooks £12  
[williammorrisathome.com](http://williammorrisathome.com)



Strawberry Thief apron, £21.99,  
[williammorrisathome.com](http://williammorrisathome.com)



Cake stand, £60,  
[wmorrisandco.com](http://wmorrisandco.com)



Spoons, £20 each  
[wmorrisandco.com](http://wmorrisandco.com)



# Graham Clarke



Logger Rhythm

## Studio Open Days

5th 13th 14th 15th December

24th 25th 26th January

10am to 1pm each day

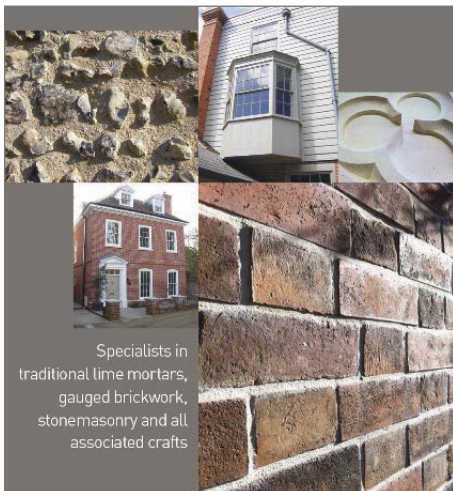
Etchings, watercolours, posters, books, cards and more...

Up The Garden Studio

White Cottage, Green Lane, Boughton Monchelsea,  
Kent, ME17 4LF

We are open by appointment throughout the year,  
hello@grahamclarke.co.uk 07801 922081

[www.grahamclarke.co.uk](http://www.grahamclarke.co.uk)



Specialists in  
traditional lime mortars,  
gauged brickwork,  
stonemasonry and all  
associated crafts

Visit our website for full listings and current projects

01622 859794

email: [info@kcrltd.uk](mailto:info@kcrltd.uk)

email: [info@kcrltd.co.uk](mailto:info@kcrltd.co.uk)

07831 236228



Kent Conservation & Restoration Ltd  
Historic Building Craftsmen



# the Anthony Saward Gallery

Frame your  
treasured moments



- Bespoke framing
- Wide choice of Mouldings & Swept Frames
- Over 30 years experience
- Friendly reliable service

4 Medway Street, Maidstone ME14 1JS 01622 676926

[www.sawardgallery.co.uk](http://www.sawardgallery.co.uk)

# CHARLOTTE HEATHER

CHARLOTTE IS AN ILLUSTRATOR, MAKER AND MOTHER. SHE CREATES INTRICATE PAINTINGS AND PAPER CUTTINGS AT HER DESK AS A CALMING ESCAPE FROM THE CHAOS OF MOTHERHOOD AND LIFE.

Charlotte creates small artworks using watercolours and pencil, finished with a delicate layering of paper carefully cut by hand using a craft knife. Her sustainably printed cards give a subtle impression of the collaged effect.

Her selection of cards is designed in mind to be used for a variety of occasions making them extremely versatile.

They are printed locally at a sustainable printing company. She uses card stock made from algae bloom, which gives a lovely unique speckled finish, and is also eco-friendly. All packaging used is recyclable/recycled/compostable, all of which is really important to her. Any added details in her packaging, i.e. tissue paper and twine, can be re-used.

Along with her selection of cards, Charlotte sells original artworks, mini-framed artworks and decorations, as well as keepsake commissions. These range from child portraits, cards, wedding gifts, and simple pet portraits in her illustrative and papercut style. There is also a small range of stationery and whimsical stickers.

Charlotte is inspired by the small joys, those glimmers of daily life: a steaming cup of tea, a good book, a quiet afternoon, an early pastel sunrise, a clear starry night, a fresh pot of coffee, a puzzle on a rainy Sunday, a slow morning, a long walk in the woods, her children embracing their childhood, and whimsical fairytales.



Other things that inspire her are Scotland, the works of Beatrix Potter and children's books. Charlotte's cards and illustrations can be found on Etsy (CharlotteHeatherIllo) and in a few independent shops dotted around Kent, as well as several seasonal markets throughout the year. (Instagram @charlotteheatherillustration.)

- Made in Ashford • Native Three, Folkestone
- Canterbury Makers • Macknade, Faversham
- Especially Health, Sevenoaks

After a year at art college, Charlotte studied Fashion Design at Nottingham Trent University and during her time there, she discovered a real passion for illustration. Joining Association of

## - Artist profile -



Illustrators for a short time, graduating, and then getting admin jobs to support herself financially, her dream to illustrate children's books remained. Becoming a mother and seemingly always surrounded by piles of paper and a box filled with materials to colour and draw with, gave her the creative nudge she needed to pursue her love of illustration a bit further, taking it more seriously.

During lockdown, Charlotte and her children regularly sat at the table creating, as well as joining in with online art clubs and signing up

for workshops and mini creative courses.

In early 2022 she registered as self-employed, almost at the same time as becoming a single parent. Signing up to a free online business course, she pushed herself out of her comfort zone, and applied for her first market for a month's time, with zero stock at all. It was the motivation she needed to get started.

The year ended with having illustrated her first Children's book, in collaboration with a local grotto. All things magical and Christmas! A story that fuelled her dream...



# Clarks Furniture

Clarks Furniture is a family-run business that specialise in up-cycling and handmade furniture. We have a shop in Petts Wood and trade from Greenwich Market on Sundays.



We can also paint your furniture.  
Commissions available on request

Clarks Furniture  
115 Queensway, Petts Wood BR5 1DG  
Telephone: 077400 30125  
Email: [clarksfurniturepettswood@gmail.com](mailto:clarksfurniturepettswood@gmail.com)



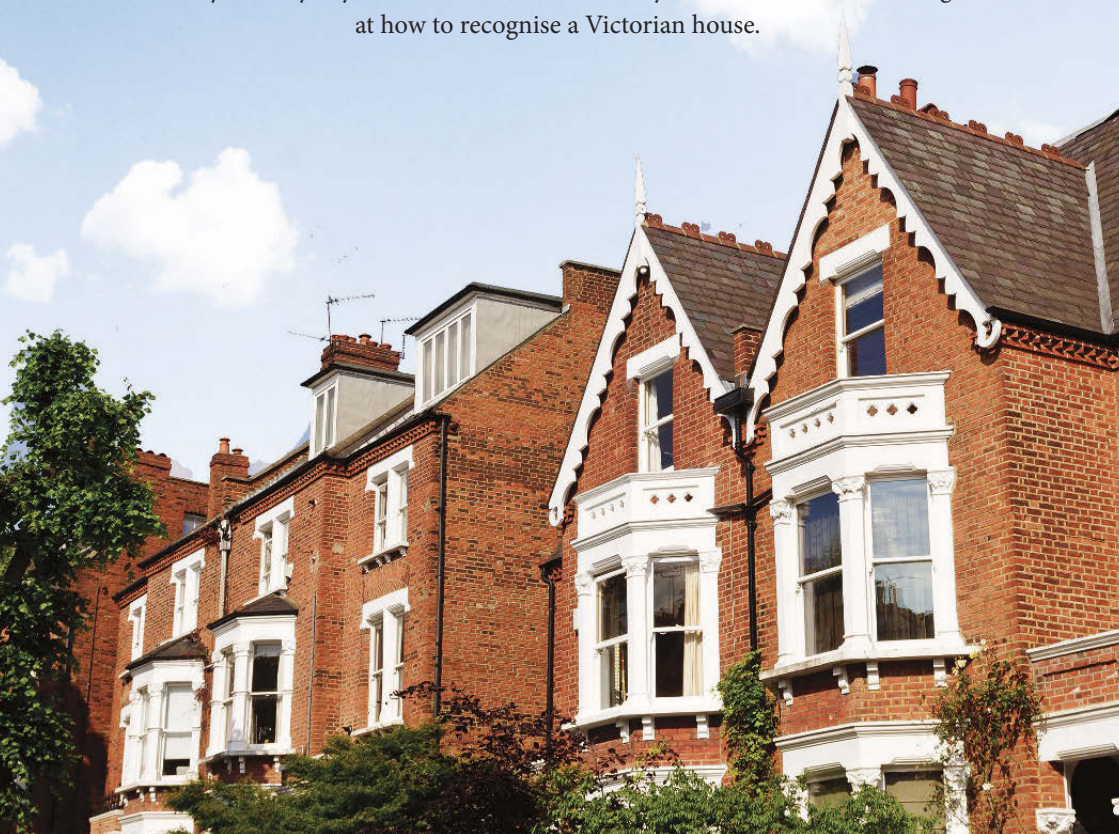
Clarks Furniture



Clarks Furniture

# ECLECTIC GRANDEUR

We continue with our series of guides to period property, to help you easily identify key features and architectural styles. This time we're looking at how to recognise a Victorian house.



**T**he Victorian era spans an extensive period between 1837 and 1901, whilst Queen Victoria was on the throne. It was a time of enormous change due to the Industrial Revolution, which resulted in huge numbers of workers moving from the country into urban areas, with subsequent surges in population growth. This resulted in the creation of vast quantities of housing providing accommodation for all

classes, including the new workforce, plus the new middle-classes and also the wealthiest. This goes some way to explain why today many of us live in a Victorian house, whether it's a terraced property or something much grander. They are a common feature of our housing stock throughout the UK, and a very popular choice for home owners as they lend themselves to refurbishment and updating as modern family homes, suiting our 21st century lifestyles.



## EXTRAVAGANT ELABORATE EXTERIORS

The love of simple design and symmetry of the preceding Georgian era became old fashioned and from the mid-1800s domestic buildings were heavily influenced by styles and trends that were very much more dramatic, like the Gothic Revival, Arts and Crafts movement and Italianate styles. Victorian houses were characterised by steep slate or tiled roofs sometimes with carved ornaments on the highest points. These embellishments continued throughout the exterior with the addition of ornately carved bargeboards; these timber trims were usually attached along the gable or roof-line. The use of terracotta tiles and patterned brickwork became very popular, all adding to the overall elaborate and showy quality of Victorian design.

## PRESTIGIOUS POINTY PORCHES

The decorative theme of the house's exterior would be echoed in the front porch, usually single storey, which would be adorned with the same style of ornamentation to match the house, including the steep angles of the roof and the intricately carved bargeboards. These were a wonderful way of drawing attention to the entrance of the home, almost becoming a 'shrine' to the most important feature, the front door.

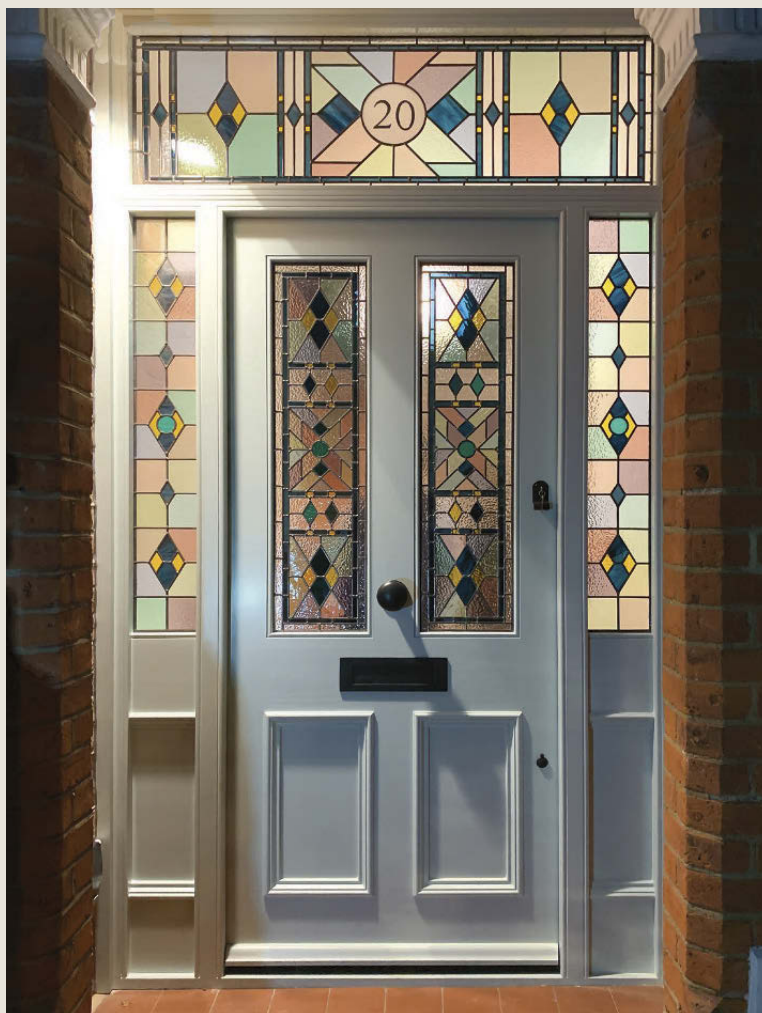
## STUNNING STAINED GLASS

A major advance in glass making technology, the introduction of plate glass, had an enormous impact on residential buildings in this period. Stained glass, which previously would have only been used in churches and large municipal buildings, as it would have



*theenglishporchcompany.co.uk*

been incredibly expensive, was now available to the more humble homeowner, not just the fabulously wealthy. Beautiful colourful stained glass panels were commonly used in entrances and feature windows on stairways. Typical Victorian designs were made up of borders of striking colours flowing around the panel. The central part of the design would consist of geometric shapes, usually pale shades, sometimes opaque, that would contrast beautifully with boldly colourful, eye-catching central features. These were usually stylised birds, fruit and flowers with flowing stems and leaves.



*cotswold-doors.co.uk*

## FABULOUS FRONT DOORS

The front door was an opportunity for the householders to put on a show and to impress visitors approaching the threshold of a well-to-do Victorian property with their wealth, respectability and fashionable style. Doors were usually made from timber and would have carved panels and matching architrave surrounds.

The upper panels would quite often have decorative stained glass panels inserted into them, which helped illuminate the interior and were yet another opportunity to impress. Some properties from this era still have the original stained glass in situ, but if you live in one where they haven't survived, it's worth considering reinstating with reproduction panels, or salvaged ones.





## IMPRESSIVE INTERIORS

Venturing past the beautifully patterned floored hallway into the interior of the Victorian house you would usually be met with large rooms with high ceilings, and, particularly in the reception rooms at the front of the property, the homeowners will have 'pulled out all the stops' employing the full range of elaborate design features the period is so well-known for. Everything was highly decorative: panelling, dado-rails, ceiling roses, cornicing and picture rails. The over-the-top design will have also spread to the staircase, which would be an opportunity to show off the wealth of the household, with an ostentatious design statement full of intricate carved details in the newel posts, handrails and balusters.

## TREASURED TRENDY TILES

By the late 1800s many ordinary Victorian terraced houses had geometric encaustic tiled flooring. These trendy and colourful tiles were most common in the hallway, and their use even spread outside the house to the pathway approaching the front entrance. They were an incredibly hardwearing and practical way of adding colour and making a style statement, indicating that the household was fashionable and well-to-do. Many were covered over in the past because they were considered old hat, especially in the 60s and 70s, so it's well worth a check if you live in a Victorian house to see if you've got some buried tile treasure waiting to be revealed and restored.



Victorian house. Sadly many were removed or covered over in the effort to update houses in later times, but thankfully some have survived. Original Victorian fireplaces were elaborately decorated and were mass produced cast iron. Ornate fire surrounds of wood, cast iron, stone, marble and slate were added to draw attention to this most important

### WONDERFUL BAY WINDOWS

The introduction of plate glass also had an impact on the look and most importantly the size of windows in Victorian housing. Windows could now become much larger, sometimes single or double paned sash windows, and the much-loved bay window became very popular. These allowed more natural light into the interior of the house, which gave the impression of a roomier living space. If you're the proud owner of a Victorian home with a bay window, it's an asset that can be made much of as a useful additional space. Here are some ideas of how you can make use of this and bring it up-to-date to suit your lifestyle: create a window-seat with storage built in underneath, or a reading nook. You could fill it with plants and greenery that will thrive in the extra light to get your 'green fix' without venturing outside. Maybe it could be your mini-office or working from home recess, or if it's big enough it could be your dining area?

### FASHIONABLE FEATURE FIREPLACES

As the only way of heating the home, there was usually a fireplace in every room of the

feature in the home. Tiles with floral motifs and geometric patterns also became popular later in the period. If your Victorian home is missing its fireplaces it's good to know that there are many companies that offer reproduction and original refurbished fireplaces, so you can restore what was an integral part of the Victorian interior.



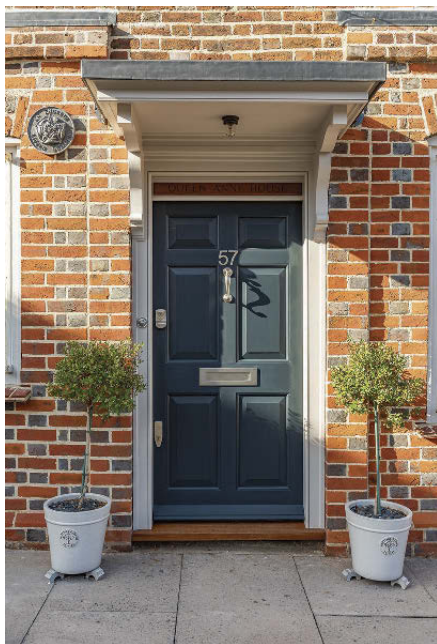


# STONE • BRICK • STUCCO • MASONRY

## CLEANING AND RESTORATION

Prelude Stone is a family-owned local company of skilled craftsmen with over 35 years of experience working with stone, brick, stucco, and lime mortars.

We specialise in all types of buildings, especially residential properties ranging from terraces to townhouses, country cottages to listed buildings.



We offer a free of charge estimating service and would welcome the opportunity to discuss any enquiry you may have at [info@preludestone.co.uk](mailto:info@preludestone.co.uk)



Unit 2, Westerham Trade Centre,  
Flyers Way,  
Westerham TN16 1DE  
[www.preludestone.co.uk](http://www.preludestone.co.uk)  
Tel: 01959 580360

—THE—  
**LONDON ROAD**  
FURNITURE COMPANY

*5000 sq ft of beautiful furniture and gifts over 3 floors*

[WWW.LONDONROADFURNITURE.CO.UK](http://WWW.LONDONROADFURNITURE.CO.UK)



TEL 01959 533433

LONDON ROAD, HALSTEAD,  
SEVENOAKS, KENT, TN14 7AA

OPEN 6 DAYS A WEEK (CLOSED WEDNESDAYS)

[WWW.LONDONROADFURNITURE.CO.UK](http://WWW.LONDONROADFURNITURE.CO.UK)







Keep warm and enjoy food glorious food  
this Christmas with Ruby and Jo.  
Our next Everhot cooking demo is  
January 28th 2025. Please contact  
Ruby and Jo to book your seat



Please call 01892 548000 for more details



55 London Road, Southborough, Tunbridge Wells TN4 0PB  
Tel: 01892 548000 Tue - Fri 9.30am - 5pm | Sat 10am - 4pm



[www.rubyandjo.co.uk](http://www.rubyandjo.co.uk)



# CHOOSING THE RIGHT KITCHEN AND BATHROOM

*for your Victorian home*

WHETHER YOUR CHOICE OF KITCHEN AND BATHROOM FURNITURE IS CONTEMPORARY OR TRADITIONAL, HIGHLIGHTING YOUR PROPERTY'S ARCHITECTURAL FEATURES WILL GIVE THE ROOMS BOTH CHARACTER AND A UNIQUE, BESPOKE FEEL.



[devolkitchens.co.uk](http://devolkitchens.co.uk)





*grantsofsevenoaks.co.uk*



*hogwoodhouse.co.uk*

## VICTORIAN KITCHEN FEATURES

- A large cook's table or island unit
- Freestanding furniture such as a glassware/crockery dresser
- Ornate corning and twisted pilasters
- Pulley clothes dryer above a range cooker
- Scullery-style wet area with butler's sink
- Copper items such as jelly moulds and kettles
- Cream or white painted cabinetry mixed with oak or teak worktops
- Dentil moulding and intricately carved corbels

## DETAILS MATTER

It's the details that matter most, so include key pieces inspired by the past such as a butler or Belfast sink, a pantry, and open shelving displaying wares that give an insight into the kitchen's functional purpose.



*neptune.com*



## TAKE A STAND

Although the pedestal sink was popular in Victorian bathroom ideas, their love of wood and expensive materials was demonstrated in the design of bathroom furniture such as washstands. This beautiful version is a great example of how an historical item can be updated and made suitable for use in modern homes.



## RAISE IT UP

If you're looking at types of toilet, there's one key rule to adhere to when it comes to choosing the best one for your Victorian bathroom idea: opt for a high-level cistern toilet with exposed pipework. This design not only pays homage to Victorian engineering but also adds an element of decorative flair to the bathroom.







## ELEGANT CURVES

This suite uses finely sculptured contours to create a look that will not be forgotten.

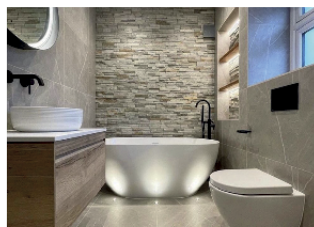
## PERFECT FOR A SOAK

This stunning Bateau cast iron bath is the perfect addition to any bathroom looking for a touch of vintage elegance and luxury.



# FREELANDS TILES

• OF DUNTON GREEN •



## The latest ideas for wall and floors

Freelands Tiles of Dunton Green have one of the largest selection of tiles on display in Kent. We have tiles to suit all tastes and budgets for both indoor and outdoor projects. Why not visit our showroom and see for yourself!

124-126 London Road, Dunton Green, Sevenoaks, Kent TN13 2UT

[www.freelands-tiles.co.uk](http://www.freelands-tiles.co.uk) | 01732 459 765 | [sales@freelands-tiles.co.uk](mailto:sales@freelands-tiles.co.uk)



## M SHIRLEY

*For Beautiful Bathrooms*

*Expert in fitting, tiling and renovations. Specialising in bathroom renovation, including tiling, plumbing and decorating.*

Also home maintenance and renovation undertaken within the mid-Kent area.

Free quotations available

All work fully insured

**Tel: 07565 843931**

E: [martin10.shirley@gmail.com](mailto:martin10.shirley@gmail.com)

# THE WINDOW SANCTUARY

ENGLAND



TRADITIONAL



HERITAGE



CONTEMPORARY

CALL US TODAY FOR A FREE NO OBLIGATION QUOTATION

**01959 565343**

[WWW.THEWINDOWSANCTUARY.COM](http://WWW.THEWINDOWSANCTUARY.COM)



## Beautiful Traditional Timber Windows and Doors

*Energy efficient timber windows and external doors,  
designed to complement your home.*

- Bespoke, high quality craftsmanship, made in the UK.
- 50 year anti-rot guarantee.
- Sustainably sourced timber.
- Conservation Area specialists.



**THE SASH  
WINDOW  
WORKSHOP**

**01344 868 668**

**[www.sashwindow.com](http://www.sashwindow.com)**





# A LIGHT TOUCH

OWNING A PERIOD HOME IS A DREAM FOR MANY, HOWEVER, THEY COME WITH THEIR OWN SET OF CHALLENGES, ESPECIALLY WHEN IT COMES TO NATURAL LIGHT. FORTUNATELY, THERE ARE PLENTY OF WAYS TO ENHANCE THE NATURAL LIGHT IN YOUR HOME WHILE RESPECTING ITS CHARACTER.



*thewindowsanctuary.com*

## MAXIMISING WINDOWS AND DOORS

One of the most straightforward ways to increase light in a period home is to make the most of its existing windows. Original sash windows can often be restored to their former glory, allowing more light to flood into your spaces. Consider refurbishing these instead of replacing them. Repairing wooden frames, upgrading to energy-efficient glass, and ensuring that they open smoothly can dramatically enhance your home's brightness.



*thewhitecompany.com*

### OPT FOR LARGER WINDOWS

If you're willing to invest a little more, think about enlarging your windows. This doesn't mean compromising your home's historic integrity; instead, look for ways to add larger panes that complement the original design. For instance, a Victorian home can benefit from floor-to-ceiling windows in a dining area creating inviting in more sunlight.

### FRENCH AND BI-FOLD DOORS

Replacing solid doors with French or bi-fold doors is another excellent way to enhance light. These designs create a seamless connection between your indoor and outdoor spaces, making the home feel larger and more inviting. When opened, they allow natural light to flow freely from the garden into your home, especially in open-plan living areas.

*john-lewis.co.uk*







### THOUGHTFUL EXTENSIONS

A well-designed extension can bring a wealth of light into your home while adding valuable living space. Consider a glass extension to the rear of your property. This modern approach contrasts beautifully with traditional architecture and can create a stunning visual experience. A glass roof or wall can flood the space with light, making it a perfect spot for a kitchen or family room.

## EMBRACING OPEN-PLAN LAYOUTS

Many period homes have compartmentalised layouts, which can hinder the flow of light. If possible, consider opening spaces. Removing non-structural walls can create an open-plan layout that allows light to travel freely between rooms. This design not only enhances light but also fosters a sense of community within the home, perfect for modern living.

## STRATEGIC ZONING

When transitioning to an open-plan layout, consider how to zone spaces effectively while maintaining light flow. Use furniture, rugs, and lighting fixtures to define different areas without creating physical barriers. For instance, a sofa can delineate the living area from the dining space while still allowing light to permeate throughout.



[sofology.co.uk](http://sofology.co.uk)



## COLOUR AND DECORATION

Once you've maximised the light in your home through architectural choices, consider your interior design. Light neutral colours on walls can make spaces feel larger and airier. Additionally, incorporating mirrors and reflective surfaces can bounce light around the room, amplifying its effect. Choose furnishings that complement the light aesthetic – think light woods, soft fabrics, and metallic accents.







**CORNWALLIS RUMLEY** *Heritage Consultants*

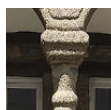
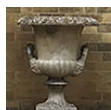
Saracens Dairy, Pluckley, Kent TN27 0SA

[www.cornwallisrumley.com](http://www.cornwallisrumley.com)

01622 278890

Our expertise in listed buildings planning, historic buildings surveys, pre-acquisition advice, archaeology, Scheduled Ancient Monuments and development site potential makes it easy to navigate national and local legislation and the consent process, underpinned by analytical surveys with heritage property asset advice.

*Our commitment is matching solutions to our clients' needs*



*Saltwood Castle*

## SEASONAL SALE

**acorn**  
*Glassline*

### Replace that old Conservatory Roof with Activ Blue Glass

The Revolutionary Self Cleaning Glass that keeps your conservatory **WARMER** in Winter and **COOLER** in the Summer.

**Now with internal HEAT REFLECTIVE GLASS**



### Stunning Bespoke Verandas

Transform your Patio or Decking area and enjoy your garden all year round. Decorative Brackets and Columns.



Rehau • Windows • Doors • Bifolds • Patios • Coloured GRP Doors • Porches • Conservatories



**FOR FREE ADVICE AND QUOTATION, NO PRESSURE, CALL: 01622 752288**

[info@acornglassline.co.uk](mailto:info@acornglassline.co.uk) • [www.acornglassline.co.uk](http://www.acornglassline.co.uk) • Unit 3, Heronden Road, Parkwood Industrial Estate, Maidstone, Kent ME15 9YR



# Improving energy efficiency IN A PERIOD HOME

THE SASH WINDOW WORKSHOP SPECIALISE IN REPLACEMENT TIMBER WINDOWS AND DOORS FOR PERIOD HOMES THAT ARE BOTH ENERGY-EFFICIENT AND SYMPATHETIC TO THE STYLE OF YOUR HOME.

**T**he Sash Window Workshop were established in 1994 and have worked on a wide range of renovation and extension projects, including on Victorian, Edwardian, and Georgian homes. Where necessary, they can comply to Conservation Area and listed building regulations.

## UPGRADING THE WINDOWS AND DOORS IN A VICTORIAN PROPERTY

The Sash Window Workshop were contacted to upgrade the windows and doors in a traditional Victorian terraced property. The new joinery needed to be double glazed, while being made on a like-for-like basis.

The company originally replaced a French door and casement window for the customer in 2012. The customer was very happy with the work so returned in 2023 to have several sash windows replaced, including a bay window.

A visit was arranged, and a Sales Surveyor inspected the windows, before providing a quotation. The customer decided to proceed with the new sash windows, which were manufactured by The Sash Window Workshop at their premises in Berkshire.

The company used Accoya wood for the new windows and doors. Accoya is a sustainably sourced timber that is thermally efficient, requires minimal maintenance, and comes with a 50-year anti-rot guarantee.

The new windows were double-glazed and

draught-proofed to improve energy efficiency.

The Sash Window Workshop pride themselves in providing a high-quality, bespoke product alongside excellent customer service. This is reflected in their 'Excellent' Trustpilot rating and the fact that roughly half their orders come from recommendations and previous customers.

In addition to manufacturing new windows and doors, The Sash Window Workshop offer installation and draught-proofing services across Kent and the Weald. If planning permission is required, they can provide drawings to accompany the planning application once the order has been confirmed.

All the windows and doors that the company manufactures are bespoke and designed to meet your specific requirements. The company can also manufacture single glazed or heritage glazed windows and doors, when required, to comply with Listed Building requirements.

In addition to sash windows, The Sash Window Workshop also work on casement windows and external doors.

The Sash Window Workshop are also proud to have been a Which? Trusted Trader since 2014. Unlike many other accreditations, Which? Trusted Traders are required every year to undergo a thorough assessment process, demonstrating that they provide high quality customer service.

**Contact The Sash Window Workshop on 01344 868 668 or visit [www.sashwindow.com](http://www.sashwindow.com).**





# The Antique Oak Flooring Company

SPECIALISTS IN ANTIQUE AND RECLAIMED FLOORING



VIEWING BY APPOINTMENT

Willow Court Farm, Bilsington Road, Ruckinge, Ashford, Kent TN26 2PB

T: 01233 659508 M: 07733 263540 [www.antiqueoakflooring.com](http://www.antiqueoakflooring.com)



# Blinds Shutters & Awnings



Contact us for your **FREE**  
home survey  
or Visit our showroom in  
Rochester kent

1 Cuxton Rd, 2 Cuxton House  
Rochester, ME22BT



01634943153 - 07564021643

Info@thevipshutterco.co.uk

www.thevipshutterco.co.uk

THE  
**VIP**  
SHUTTER CO



Wine glass, £8,  
maisoncherie.shop



French farmhouse chair, £189  
wheresaintsgo.co.uk



Pendant light,  
£90, darlighting.co.uk



Stoneware mug, £9.99,  
giselagraham.co.uk



Cushion, £25,  
frenchbedroom.co.uk



## GET THE LOOK

# French farmhouse

Wall shelf, £74.95  
melodymaison.co.uk



Jug, £24.99  
giselagraham.co.uk



Rattan laundry basket, £65  
marquisanddawe.co.uk



Patchwork tiles £16.99  
tilemountain.co.uk



Dressing table stool,  
£199,  
cotswoldco.com

Bodum coffee pot, from £26,  
Copperfields of Whitstable



Camembert baker, £24,  
Copperfields of Whitstable



Harrison clock, £85  
neptune.com



Napkins, £28,  
helenround.com



Moules pot by Kitchen Craft, from £23,  
Copperfields of Whitstable



Carafe, £27.50,  
maisoncherie.shop



Giselle vase, from £65  
neptune.com



Footstool, £1,860,  
juliabrendel.com



Planters (set of 3) £129,  
vincentandbarn.co.uk



Wicker bench, £275, [wheresaintsgo.co.uk](http://wheresaintsgo.co.uk)



Blossom planter, from £23.99  
[thewisteriatree.co.uk](http://thewisteriatree.co.uk)



Salt & pepper set, £118  
[rebeccaudall.com](http://rebeccaudall.com)



Tin jug, £18.99  
[thewisteriatree.co.uk](http://thewisteriatree.co.uk)



Table lamp, £60,  
[cotswoldco.com](http://cotswoldco.com)



French style chair, £675  
[laresidenceinteriors.co.uk](http://laresidenceinteriors.co.uk)



Mugs, £40 per pair,  
[oka.com](http://oka.com)



Stool, £395,  
[oka.com](http://oka.com)



Old French wall hanger, £42,  
[heavenlyhomesandgardens.co.uk](http://heavenlyhomesandgardens.co.uk)



Print, £13.50,  
[inkanddrop.com](http://inkanddrop.com)



Mirror, £35,  
[clickstyle.co.uk](http://clickstyle.co.uk)



Garden cushion,  
£16 [dibor.co.uk](http://dibor.co.uk)



Lacanche Volnay cooker, from £7,110,  
[rubyandjo.co.uk](http://rubyandjo.co.uk)



Set of metal garden table & chairs,  
£245, [afternoah.com](http://afternoah.com)



ORLESTONE OAK

KENT · ENGLAND

# Bespoke Flooring

LONG & WIDE · PRODUCED IN KENT · FINISHED BY HAND



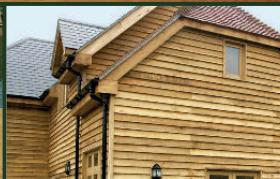
JOINERY



OAK FRAMED BUILDINGS



DECKING



CLADDING

For more information on pricing or fitting, or to place an order

CALL **01233 732179** VISIT **[orlestoneoak.co.uk](http://orlestoneoak.co.uk)**

## CURTAINS & SHUTTERS | DOMESTIC & COMMERCIAL



**Medway Blinds**

**FREE QUOTES**

**01634 68 68 68**

Unit 6, The Oaks, Business Park  
Revenge Road, Chatham ME5 8LF

[www.medwayblinds.co.uk](http://www.medwayblinds.co.uk)



# HMR

HAND MADE RUGS

With an ever-growing demand for custom-made, designed rugs and our collaborations with designers across the globe, we can create rugs in any design imaginable, alongside thousands of existing rugs to choose from.



New Hand Made Rugs showroom now open

The Old Bank, 84 High Street Rye, East Sussex

Call. 01797 360353 | [rye@handmaderugs.co.uk](mailto:rye@handmaderugs.co.uk) | [www.handmaderugs.co.uk](http://www.handmaderugs.co.uk)

- Decorative details -

# PLASTER CRAFT

Plaster ornamentation adds character to any room and has been around since the 17th century, when plastered ceilings became the must-have decor of choice for wealthy families.

[noel-marquet.co.uk](http://noel-marquet.co.uk)





## A ROSE BY ANY OTHER NAME

The ceiling rose has been a part of interior decor since the 1600s, but if you think its function is purely decorative, think again. In fact, this type of decoration was originally installed to stop the ceiling getting scorched and discoloured by candle or gas flames, meaning that you only had to redecorate the rose – not the entire ceiling.



*ambient-architecture.ie*





## CORNICE STYLES

Cornices are decorative moldings that run along the upper edge of the walls where they meet the ceiling. In Victorian design, you'll find different cornice styles, such as dentil cornices with small and acanthus leaf cornices adorned with intricately carved foliage motifs. Each style brings a unique character to your room, allowing you to choose one that matches your interior decor.

## WALL PANELS

Wall panels are a versatile and stylish way to add texture and dimension to any interior space. Panel molding consists of rectangular or square frames applied to the lower portion of the wall, creating a panel effect. These can be used in conjunction with dado rails or as standalone features. They add depth and texture to your walls, enhancing the overall aesthetic of the room.



*Sofa, £3,145 [arloandjacob.com](http://arloandjacob.com)*



# Maintaining plaster mouldings

*Decorative plasterwork can be a room's crowning glory, but often suffers from damages. Use our maintenance checklist and repair guide to restore mouldings to their original beauty.*

## Maintenance checklist

- Find the cause of damp patches and staining and correct at source.
- Check for loose sections of plasterwork.
- Note cracks and other damage.
- Identify and deal with problems associated with supporting timber work.
- Look for rot or insect attack.
- Clean dust and dirt from crevices and remove accumulated paint layers.
- Seek specialist advice if in doubt.
- Repair missing pieces or areas of damage.

## Repair guide

When undertaking renovation or repair work, try to avoid removing mouldings as plasterwork easily crumbles, and timber splits and chips.

Where removal is necessary, photograph, number and note the position of all sections so that they can be correctly returned later.

Minor damage may be repaired with a proprietary filler, while plaster of Paris is ideal for larger repairs. However, plasterwork requires considerable skill so it is advisable to employ a craftsperson where significant or intricate work is required.



A reputation built on quality  
craftsmanship and service

*Karl  
Terry*

Roofing Contractors



Kent Peg Tiling & Listed Building Specialists.  
Conservation and renovation specialists.  
High quality work by experienced craftsman.  
National Award Winning Company.

01797 270 268 | [kentpegs.com](http://kentpegs.com)



## ALLINGTON ROOFING

### New Roofs & Repair Specialists

A family-run business established in 1979

#### FREE ESTIMATES

- Fascias, soffits & guttering
- Moss removal
- Small repairs stripe & re-tile
- Chimney stacks
- Lead work & valleys
- Repointing
- Felt Roofing
- Kent Peg

Find us on  
**Checkatrade.com**

Tel: 07889 255813 or 01622 861564

info@allingtonroofing.co.uk  
www.allingtonroofing.co.uk



**01732 872199**  
**07860 100295**

*Family run business*

- ✓ **Wood Floor Restoration**
- ✓ **Wood Floor Sanding & Oiling**
- ✓ **Wood Floor Installation**

**Affordable Kent Wood Floor Restorations.**

Fully trained by KHR floor sanding company and Loba floor finishes.

If you're looking for a floor sanding expert, look no further!

**OUR SERVICES OPERATE IN THE WHOLE OF KENT AND SURROUNDING AREAS**

E: [info@rolincleaningservices.co.uk](mailto:info@rolincleaningservices.co.uk)  
W: [www.rolincleaningservices.co.uk](http://www.rolincleaningservices.co.uk)



**PRICE MATCH PROMISE**



**Block Paving • Resin Drives**  
**• Tarmacadam • Patios • Fencing**

**Please Call For Free Estimates & Friendly Advice**



*Driveways by Design*



**Office: 01322 518 056**  
**Freephone: 0800 747 1580**  
**Direct: 07554 092 140**

[www.firmacontractorsltd.co.uk](http://www.firmacontractorsltd.co.uk)

The Old Barn, Off Wood Street, Swanley Village, Kent BR8 7PA





# Stanbridge Surfacing Ltd

## Driveway Specialists



- Resin bound & bonded • Hot bitumen & gravel
- Groundworks • Tarmacadam
- Dropped kerbs & crossovers • Block paving

Tel: 01892 652700 Mobile: 07506 968221  
[stanbridgesurfacing.co.uk](http://stanbridgesurfacing.co.uk) | [info@stanbridgesurfacing.co.uk](mailto:info@stanbridgesurfacing.co.uk)

Find us on  
**Checkatrade.com**



# SCOTTIE'S LOGS

SEASONED HARDWOOD  
LOGS READY TO USE

1 ton bulk bag £80

Call 0800 690 6547

**FREE local delivery**



## HOOD'S TREE SERVICES LTD TREE SURGERY SPECIALISTS



### SERVICES INCLUDE:

Tree reductions and felling

Stump grinding

Hedge cutting and removal

NPTC qualified and fully insured

Free quotes and advice provided

info@hoodstrees.co.uk - www.hoodstrees.co.uk  
01622 744149 - 07590 461382

## WOOD FLOOR SANDING

- Family business -

We also restore wooden kitchen tops

FREE estimates

Call any time

Tel: 07794 953597

email: gerardgrover@gmail.com



## TP | Resin Driveways Ltd

[www.tpresindriveways.co.uk](http://www.tpresindriveways.co.uk)

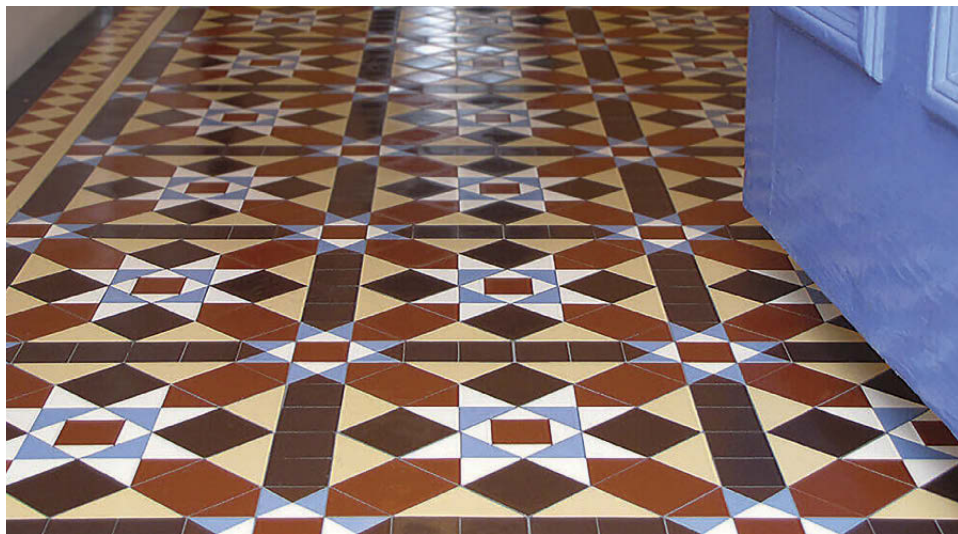
- Driveways • Car parks • Patios • hot bitumen & gravel
- Block paving • Tarmac surfacing • Resin restoration

**E: info@tpresindriveways.co.uk**

**O: 01892 327833 M: 07817 807893**



# HOW TO... RESTORE VICTORIAN TILES



ANYONE LIFTING A HALLWAY CARPET IN A VICTORIAN HOUSE DOES SO WITH ANTICIPATION, ALTHOUGH EXCITEMENT MAY WANE SLIGHTLY AS THE MAJORITY OF ORIGINAL TILES MAY HAVE SUFFERED A CERTAIN AMOUNT OF WEAR AND TEAR.

**B**egin the restoration process by thoroughly cleaning the tiles. Sweep or vacuum the floor to remove loose dirt and debris. Use a mild detergent, baking soda or a specially formulated cleaner and warm water to mop the floor. Avoid using abrasive cleaners or harsh chemicals that can damage the tiles. For stubborn stains, use a soft-bristle brush and gently scrub the affected area. Rinse the floor with clean water and allow it to dry completely before proceeding.

If you are not successful at removing waxes and coatings without using chemicals, make use of a sealer remover to eliminate them and to remove water-based acrylic sealers. After applying the product to the floor and allowing it to sit there for ten to twenty minutes, the sealer should have become more malleable.

Because the chemical may seep into the tile surface, you need to keep the surface wet as you work, so divide the area into manageable parts. Scrub the area using a cleaning pad. Continue until all of the remains of the old sealer have been removed.

Remove the thick residues with a plastic blade. Use some clean, warm water and a sponge, and then dry with a towel or cloth after removing any residue that may still be present.

After that, give it a few washes with a weak solution of an alkaline cleaner, which should be diluted 1 to 10 with water.

## REPAIRING

Once the tiles are clean and dry, it's time to repair any damaged or missing ones. For small chips or cracks, you can use epoxy or adhesive to fill in the gaps. Carefully apply the adhesive



and smooth it out to match the level of the surrounding area. If a tile is completely broken or missing, try to find a replacement that matches the original design.

## REPLACING GROUT

Over time, the grout can become discoloured or deteriorate. To restore the appearance of the floor, consider replacing the grout. Remove the old grout carefully, taking care not to damage the surrounding tiles. Once removed, clean the gaps thoroughly and allow them to dry. Mix a fresh batch of grout and apply evenly. Wipe away any excess grout with a damp sponge and allow it to cure for the recommended time.

## MAINTENANCE TIPS

To maintain the beauty of Victorian floors, establish a regular cleaning routine. Sweep or vacuum the floor regularly to remove dirt and debris that can scratch the tiles. Mop the floor with a mild detergent or cleaner and warm water to keep it looking fresh. Avoid using abrasive materials that can damage the tiles. Periodically sealing the tiles can help protect them from stains and wear.





## HR HAMPSON ROOFING LIMITED

### WE CARE ABOUT YOUR ROOF

Roofing contractors specialising in traditional roofing.

From small repairs to new roofs and lead work.

FREE no obligation estimates

and advice given. Please call for any enquiry.



Phone: 01622 862894 Mobile: 07734 060723

Email: [hampsonroofing@gmail.com](mailto:hampsonroofing@gmail.com)

[www.hampsonroofing.com](http://www.hampsonroofing.com)

DOLMEN

CONSERVATION  
& JOINERY

BESPOKE ARCHITECTURAL JOINERY  
ENGLISH VERNACULAR CARPENTRY | HANDMADE KITCHENS  
PERIOD DOORS AND WINDOWS | SUSTAINABLE TIMBER SOURCING

[dolmenjoinery.co.uk](http://dolmenjoinery.co.uk) | [projects@dolmenjoinery.co.uk](mailto:projects@dolmenjoinery.co.uk) | 01708 732 813 | 01233 746 301 | @dolmenconservation  
WOODCHURCH - KENT

# HVM

s o l u t i o n s

*The complete building and maintenance company*

## ALL BUILDING AND PROPERTY MAINTENANCE WORKS COVERED

- ROOFING WORKS
- DECORATION WORKS -  
INTERNAL/EXTERNAL
- PLUMBING
- GAS/BOILER WORKS
- ELECTRICAL WORKS
- KITCHEN/BATHROOM  
REFURBISHMENTS
- PLASTERING WORKS
- CARPENTRY WORK
- BRICKWORK
- HANDYMAN
- RUBBISH REMOVALS
- 24 HOURS EMERGENCY SERVICES
- FULL REFURBISHMENTS

ALL WORKS FULLY INSURED



**10% DISCOUNT**  
**for OAP's**

PLEASE CALL FOR A *free* QUOTATION

Tel: 01689 861007

Email: [info@hwmsolutions.com](mailto:info@hwmsolutions.com)

[www.hwmsolutions.com](http://www.hwmsolutions.com)





# A.T. PALMER LTD

RESTORATION SPECIALISTS EST.1949

OVER 70 YEARS IN BUSINESS



| EMPLOYED SKILLED WORKFORCE  
| RENOVATIONS & EXTENSIONS  
| CONVERSIONS & ALTERATIONS  
| DESIGN & BUILD

T: 01233 770077

SMARDEN BUSINESS ESTATE, TN27 8QL

[atpalmer.co.uk](http://atpalmer.co.uk)



# Putting the heart back into Hartridge House



We've been fortunate to have previously featured several projects from the renowned historic building and specialist conservation company, A T Palmer Ltd in recent years. The features on their projects always make fascinating reading, illustrating the full breadth of their workforce's talents, skills, and their amazing attention to detail. They have built up an enviable reputation as one of the most highly respected firms in the field and recently celebrated their 75th anniversary.



Here's yet another shining example of their work, as we take a look at Hartridge House. This was the total refurbishment and extension project of an early 20th century house in Kent that was crying out to be brought up to date and to be sympathetically restored as a masterpiece of modern living.

The Grade II Listed, Hartridge House is described as standing high above the Weald of Kent, commanding panoramic views. The building is a red brick country house built in 1913 for Colonel Charles Grey, a respected horticulturalist and nursery owner. It was possibly built to designs by the Arts and Crafts architect, Mervyn Macartney. It was sold in 1920 and had many different owners over the years,

for a time it was used as an office building for an Insurance company. However, when the new owners purchased it in 2022, very little had been done to the property for over forty years. The heating system was virtually defunct, it was a very cold and run down house, in need of a total refurbishment.

The architects Stephen Langer based in Tunbridge Wells were appointed by the owners to develop the designs for the total upgrade and refurbishment of the house, with an additional orangery extension to one side. Stephen Langer is a well-known RIBA Chartered Practice with a wealth of experience in conservation projects of Listed and period properties. They have a specialist design philosophy that is ideally suited to the particular needs of this project. Their ethos is to use a conscientious approach









to energy and ecological conservation in their designs, to ensure they are as future-proofed and sustainable as possible. It follows that one of the most important considerations for the owners was that the property be brought up to date to be as sustainable and eco-friendly as possible, so the architects were the perfect choice.

A T Palmer Ltd commenced work on the sympathetic envelope repair whilst Listed planning consent was being sought. This included repairs to the roof, windows, cleaning all

the brickwork and basically getting the exterior of the house ready for the next stages of the refurbishment to begin.

The designs, along with all the structural engineers details for the total refurbishment, renovation and orangery extension included improvement of insulation to the external fabric. The existing metal cased lead light windows couldn't be touched because of the Grade II Listed status, so new secondary timber double glazed windows were fitted inside the existing windows, to improve the energy efficiency.

The highest priority was to ensure the overall energy efficiency of the house and to upgrade its eco-credentials. The solution to this was to install a ground source heat pump and a solar array, along with under floor heating in much



of the ground floor. Everything that could be done to keep the building warm and to make it sustainable has been done, even the swimming pool is heated from the ground source heat pump and solar panels.

The orangery extension constructed by A T Palmer Ltd to the side of the original house is a tour de force. It has created a substantial and generous living space that has access out on to the swimming pool area, with a double height vaulted atrium ceiling, which bathes the room with additional light. Great care was taken to match the bricks for the orangery to the original house, which are specially made for the project and being 50mm thick handmade bricks. A local handmade brick company was found, to work with A T Palmer Ltd and the owners, to

develop a blend of 4 different coloured bricks and the percentages of each colour to be used to match the original bricks of the house. The effect is stunning.

Right from the start the owners took the refurbishment and construction on as their own project and have been actively involved every step of the way. They lived in the house through the build, from section to section. This was made possible by creating a self-contained living accommodation complete with kitchen on the second floor, which meant they were very much in situ and able to work with the team on the project.

The owners worked closely with the architects as they created the drawings for the design,

the layout and the flow of the house. They also chose all the interior finishes themselves and have done an amazing job in creating stunning rooms with décor that evokes the era that the house was built in, selecting wallpapers, tiles and colours that are reminiscent of the Arts and Crafts movement and have masterfully blended these with more contemporary styles, achieving an overall elegant and modern interior throughout. This is a real triumph.

As the principal contractor, A T Palmer Ltd was responsible for the complete project. They were also heavily involved in developing the details of the fabric and materials used, even down to sourcing secondhand clay tiles for the new orangery roof to match the existing

house. Their highly skilled and multi-talented workforce were also responsible for all the interior work creating the cornicing, exquisite detailing, all the beautiful bespoke carpentry including cupboards, paneling, flooring and also fitting the sanitary wear throughout.

The owners, the Architects, AT Palmer Ltd and everyone involved in this inspiring project should be rightly proud of the wonderful work that has gone into rejuvenating what was a tired and rather dismal dwelling that had seen better days. They have breathed new life into Hartridge House, it is now recreated as a beautiful and sustainable home, that can take its rightful place in the 21st century and beyond into the future.

**For more info go to: [atpalmer.co.uk](http://atpalmer.co.uk) and [stephenlanger.co.uk](http://stephenlanger.co.uk)**





## We build dreams from the ground up



### Comprehensive range of building services including:

- New Construction • Renovations and Remodeling
- Commercial and Residential Projects • Structural Repairs • Custom Builds • General Contracting
- Project Management

Skilled professionals committed to completing projects on time and within budget whilst maintaining high standards and quality.

We pride ourselves on our attention to detail and our ability to tailor our services to meet the needs of unique needs of each client.

**07841 409061**

[www.mdbuildingservices.co.uk](http://www.mdbuildingservices.co.uk)

[mark@mdbuildingservices.co.uk](mailto:mark@mdbuildingservices.co.uk)

Facebook page MDBSmaidstone

**M D BUILDING SERVICES LTD**

## Jane Elizabeth Architects

### CREATING *exceptional spaces* within KENT & SUSSEX

*Jane Elizabeth Architects is an experienced Chartered Architects in Kent with expertise in listed properties and conservation area projects. We work closely with clients & consultants to create excellent new spaces.*



[JANEELIZABETHARCHITECTS@GMAIL.COM](mailto:JANEELIZABETHARCHITECTS@GMAIL.COM)

[WWW.JANEELIZABETHARCHITECTS.CO.UK](http://WWW.JANEELIZABETHARCHITECTS.CO.UK)

01622 884373

07715860787



## We are the UK's leading restorer and repairer of traditional, distinctive oast cowl & kiln roofs.

New cowl construction. Painting & cleaning. Repair & maintenance. Also specialising in Kent peg tile roof repairs and kiln tile repairs.

Trusted over four family generations by royalty, businesses & homeowners alike.



Book a no-obligation visit  
01622 726 898 / 07973 332 790  
[www.dudeandarnette.co.uk](http://www.dudeandarnette.co.uk)



**DUDE & ARNETTE**  
OAST COWL CONSTRUCTION



# Oast owners

- Lime mortar pointing
- Brick and stone replacement
- Structural crack repairs & remedial wall ties
- Natural damp proofing
- Professional brick and stone cleaning
- Render removal to allow masonry to breathe

Prestige Brickwork is a restoration company that specialises in the conservation of period properties across Kent. We offer all types of expert brickwork repairs and repointing. We are specialists in working with lime mortar.



## RESTORATION & CONSERVATION

**Tel: 01227 908563 or 07954 409840**

[www.prestigebrickwork.co.uk](http://www.prestigebrickwork.co.uk)

email: [prestigebrickworkkent@gmail.com](mailto:prestigebrickworkkent@gmail.com)

**ASH**  
SCAFFOLDING LTD

## Conservation Scaffolding Specialists



Smarden Business Estate, Smarden, Ashford TN27 8QL  
Tel: 01233 770373 email: [info@ashscaffoldingltd.co.uk](mailto:info@ashscaffoldingltd.co.uk)  
[www.ashscaffoldingltd.co.uk](http://www.ashscaffoldingltd.co.uk)

# NEW FUEL SHOP OPENS IN AYLESFORD

As well as our Countywide Tanker deliveries we now have open our Fuel Shop in Aylesford

A variety of products are available including barrels of fuel should you have run out. !



Unit 2D, Quarry Wood Industrial Estate,  
AYLESFORD, ME20 7NA



## EMERGENCY 250 LITRE DELIVERIES OF HEATING OIL AVAILABLE

Our quick response rural delivery van can deliver from 250 to 900 litres at short notice should you have run out of Heating Oil.



**CALL**  
**01622-962599**



Super prices with  
litres of customer  
service !

## REGULAR TANKER DELIVERIES OF :-

HEATING OIL  
RED DIESEL\*  
ROAD DIESEL DERV

Order ONLINE by scanning the  
QR CODE



\* Red Diesel only supplied by TANKER & to Agricultural users only.



# MICHAEL HARRIS

ASSOCIATES

## Architecture • Historic building surveying • Heritage consultancy

**MICHAEL HARRIS ASSOCIATES** have extensive experience in historical building evaluations; condition surveys, design and management of repair and conversion projects; design and planning for extensions and new build properties within the curtilage of listed and historic buildings, National Parks, Green Belt conservation and Areas of Outstanding Natural Beauty (AONB).


In association with Alan Dickinson MRICS we offer:

- Building surveys
- Condition reviews
- Method statements
- Heritage statements
- Assessments of Significance
- Archaeological interpretative reports
- Historical research



**MHA**

The Granary, Halden Place, Halden Lane, Rolvenden TN17 4JG  
T: 01580 241278 E: [info@michaelharrisassociates.com](mailto:info@michaelharrisassociates.com)  
[www.michaelharrisassociates.com](http://www.michaelharrisassociates.com)



# Supporting communities in Kent since 1781.

With offices across Kent and London,  
we provide specialist legal services for  
individuals and businesses in the Southeast.

- + Contracts & Transactions
- + Conveyancing
- + Employment
- + Family
- + Licensing
- + Probate
- + Property
- + Tax & Estate Planning
- + Wills

To find out how we can help,  
call us on **01622 698000**  
or email [enquiries@wmlaw.uk](mailto:enquiries@wmlaw.uk)

[whitehead-monckton.co.uk](http://whitehead-monckton.co.uk)



**WM** Whitehead  
Monckton

Whitehead Monckton Limited (no. 08366029), registered in England & Wales.  
Registered office 5 Eclipse Park, Maidstone, Kent, ME14 3EN. Authorised  
and regulated by the Solicitors Regulation Authority under no. 608279.

# WHY SEEK LEGAL ADVICE



The specialist team at Whitehead Monckton, can provide you with the expert support you need, in good times and in bad, to resolve the complex people issues you face. We understand that your people are key to the success of your business or organisation.

From the employer to the employee, from settlement agreements to disputes, employment law covers a wide range of issues and is an area that is subject to frequent changes; as we have seen with the Employment Rights Bill 2024 which proposes to dramatically change the legal landscape. It is ever important for employers and employees to stay up-to-date to ensure they are aware of their rights and obligations.

Employment is a big part of our lives and so it is likely that many people will come across situations that requires guidance from time to time. Seeking legal advice, is the best way

to ensure you stay protected on employment matters that may be affecting you.

In this article, we will explore 3 Common reasons for seeking legal advice for employment-related issues.

## CONTRACTS AND POLICIES

One of the most common reasons an employer may seek legal guidance is for help surrounding their employment contracts and policies.

Employment legislation can be lengthy and confusing, so when it comes to employment contracts and policies, you as an employer may not just be able to tweak a free sample template you find online. Seeking legal advice will ensure



that your contracts and policies are up to date and compliant with the latest requirements, protecting you against any potential claims. If you are an employee or worker, you are entitled to receive a written statement (often referred to as an employment contract) on or before your start date.

#### THE REDUNDANCY PROCESS

The redundancy process is one that is quite complicated for both the employer and the employee. Seeking legal advice, as either party, is a great way to ensure you know what your rights and obligations are during the process. As an employee, you are required to seek independent legal advice for any settlement agreements you are entering into. This is to ensure you are fully aware of the terms and conditions of the agreement. As an employer, you are required to follow certain steps to ensure that you are upholding your statutory duty and are acting fairly throughout a redundancy process.

#### RESOLVING DISPUTE

##### AND EMPLOYMENT TRIBUNAL CLAIMS

Disputes can arise between employers and employees for a number of different reasons and so seeking legal advice in such situations can be crucial in ensuring you can reach an effective resolution. Employment law specialists can provide parties with guidance on the law and also suggest options to resolve matters, whether this be through alternative dispute resolution or, where necessary, litigation. Seeking legal advice may also be crucial in stopping these disputes arising in the first place. Ensuring you as an employer are meeting your duties towards your employees removes risks of claims and helps to protect everyone within the workplace.



#### KEY TAKEAWAY

Both employers and employees may at some point find themselves needing employment law advice. Employment specialists often have years of experience dealing with difficult and complex situations and are best able to ensure your issues are dealt with confidently and efficiently by providing you with guidance that is tailored towards your specific circumstances. Getting timely and accurate employment law advice can help you maintain healthy working relationships and also save you a lot of stress going forward.

To find out how we can help call  
us on 01622 698000  
[whitehead-monckton.co.uk](http://whitehead-monckton.co.uk)

**WM** Whitehead  
Monckton



# WHAT'S IN SEASON

Eating seasonally means eating foods that are naturally in harvest at that time of year, and eating locally means eating food that can be grown in the UK.

seasonally is about pleasure, variety and discovery. So, what should you be looking for this winter?

**DECEMBER:** the festive season brings a traditional bounty of fresh fruit and veg. Serve sprouts and parsnips alongside your turkey, add cranberries to colourful cocktails and dates to sticky Christmas puddings.

**JANUARY:** Choose between savoury toast in the morning with creamy avocado, or sweet with tangy homemade marmalade using Seville oranges. Earthy Savoy cabbage and purple sprouting broccoli bulk out winter dinners, while lemons and limes brighten up grey days.

**FEBRUARY:** Hearty celeriac and sweet potatoes are versatile and plentiful. Leafy kale is perfect for adding freshness to your favourite winter salads and comfort dishes. For sweet treats, gorgeous grapefruit and juicy plums add vibrant colour to grey winter days.

**E**ver thought about where your food comes from? We've become used to having any food we want at any time of the year. But out-of-season produce means flying it in from overseas or using intensive farming methods such as pesticides and greenhouses to force them to grow year-round.

Eating local and seasonal food is not only more tasty and healthy, but better for the environment.

It makes for the richest, most delicious and healthy diet... we just need to make a conscious effort to discover it. Eating









*This harvest pie is packed with canned lentils and vegetables and uses potato and leek soup to bring everything together for a hearty and savoury supper.*

# A COOKBOOK FOR WINTER

Get cosy with this comforting collection of seasonally inspired recipes – the ideal cook's companion for the winter months. Featuring more than 95 recipes for winter eating and entertaining, from soups and stews to melted cheese, pasta, pies and puddings, plus warming hot drinks, this book provides all the inspiration you will need.

SERVES  
4

## YOU WILL NEED

500 g ready-made puff pastry  
1 egg, whisked  
2 x 400-g cans green lentils, drained and rinsed  
400-g can baby carrots and petit pois, drained and rinsed  
400-g can green beans, drained and rinsed  
400-g can potato and leek soup  
25 g plain flour, plus extra for dusting  
15 g butter, diced  
1 teaspoon dried mixed herbs  
1 teaspoon salt  
1/2 teaspoon freshly ground black pepper  
1/2 teaspoon curry powder  
a 28 x 20 cm/11 x 8 inch baking pan

## HARVEST PIE

### METHOD

Preheat the oven to 200°C fan/220°C/425°F/Gas 7.

Cut the block of pastry in half and roll out one half on a floured work surface to about 3 mm/1/8 inch thick. Use this to line the baking pan, allowing the pastry to overhang the top lip of the pan. Line with baking parchment and baking beans (or raw rice, etc.) and blind bake in the preheated oven for 20 minutes. Remove from the oven, remove the parchment and baking beans, then brush with some of the whisked egg and return to the oven for another 5 minutes.

In a mixing bowl, gently fold all the remaining ingredients together. Pour into the baking pan on top of the cooked pastry and level out with the back of a spoon. Roll out the remaining pastry to cover the top, crimping around the edges to seal.

Pierce the top with a sharp knife to help the steam release, brush with the remaining egg and season the top.

Bake in the oven for a further 30 minutes or until the top is golden. Leave to rest for at least 15 minutes to allow the filling to set before serving.

SERVES  
6

## YOU WILL NEED

8 large plums  
3 pears  
250 g fresh blackberries  
1 tablespoon crème de cassis  
(optional)  
4 tablespoons soft  
brown sugar

## COBBLER TOPPING

180 g plain flour  
11/2 teaspoons baking  
powder  
a pinch of salt  
75 g unsalted butter, diced  
50 g granulated/caster sugar  
125–150 ml buttermilk

## CINNAMON CRÈME FRAÎCHE

150 g crème fraîche  
2 teaspoons icing sugar,  
sifted  
a little ground cinnamon  
  
a 2-litre Dutch oven

# BAKED ORCHARD FRUIT COBBLER WITH CINNAMON CRÈME FRAÎCHE

## METHOD

Preheat the oven to 170°C fan/190°C/375°F/Gas 5.

Halve, stone and thickly slice the plums. Peel, core and thinly slice the pears. Wash and dry the blackberries. Place the fruit in a bowl, add the cassis, if using, and brown sugar, and stir well to combine. Transfer the fruit to the Dutch oven.

To make the topping, sift the flour, baking powder and salt into a bowl and rub in the butter to make fine crumbs. Stir in the sugar. Work in enough buttermilk to bring the mixture together to make a slightly sticky dough. Spoon mounds of the topping over the fruit layer, allowing some fruit to remain uncovered.

Transfer the Dutch oven to the preheated oven and bake uncovered for about 30–35 minutes until the topping is risen and golden and the fruit is oozing rich juices. Check halfway through and cover the pan with the lid if the top is beginning to over-brown.

Meanwhile, make the cinnamon crème fraîche. Stir the crème fraîche, sugar and cinnamon together until combined. Serve with the fruit cobbler.

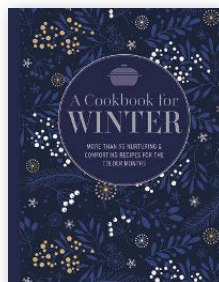
## WIN A COPY OF A COOKBOOK FOR WINTER

For your chance to win a copy of *A Cookbook For Winter*, please email your name, address and telephone number to:

**dawn@conservationnews.co.uk**

Closing date: Friday 8 February 2025

*This is an extract from  
A Cookbook for Winter published by  
Ryland Peters & Small (£22)  
Photography © Ryland Peters & Small*







*This versatile dish can be easily adapted to any time of year, using pretty much any fruit you like.*

# The Swan

*Little Chart*

Our restaurant and new chef have new dishes to enhance your dining experience

## SUNDAY ROAST

Sharing boards  
available every Sunday

## CLASSIC CARS

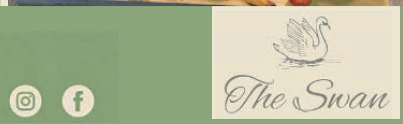
Every 3rd Sunday of the month from 11.30am



BOOK YOUR  
CHRISTMAS  
PARTY NOW

## 14TH DEC BAUBLES WITH BUBLÉ

Live Music  
5 Course Meal  
£50



The Swan, Swan Lane, Little Chart, Kent TN27 0QB  
Phone: 01233 840011 Email: [theswanlittlechart@yahoo.com](mailto:theswanlittlechart@yahoo.com)  
[www.theswaninnlittlechart.co.uk](http://www.theswaninnlittlechart.co.uk)



*The Swan*

# Bull green farm

QUALITY FARM PRODUCE

We are a family-run farm rearing Dexter cows, sheep and chickens. We believe animals should be able to roam free in the fields and enjoy fresh air and green grass.

We have a nicely stocked shop with fresh eggs daily, home grown veg, and a variety of local products such as Kentish honey, jams, and occasionally freshly baked cakes. We also have a freezer packed with locally made pies and tasty treats.



Bull Green,  
Bethersden TN26 3LB

Tel: 01233 822463

Email: [Shop@BullGreenFarm.co.uk](mailto:Shop@BullGreenFarm.co.uk)





# PINOT NOIR goes global

THERE IS NOW MORE FABULOUS AND BEAUTIFUL PINOT NOIR BEING MADE IN THE WORLD THAN EVER BEFORE: FROM OREGON TO CALIFORNIA, TO GERMANY TO NEW ZEALAND, AND OF COURSE FRANCE. BUT PINOT NOIR HAS ALWAYS BEEN A TRICKY GRAPE TO GROW, BECAUSE IT DOESN'T ALWAYS FOLLOW THE RULES.

Until quite recently, Pinot Noir was judged on how similar it was to red Burgundy, which is where Pinot Noir is famous for its excellence. But then winemakers started to wake up and realise that, rather than try to emulate the style of Pinot Noir from Burgundy, why not make a fantastic wine that is unique to its own growing environment and love it for its individual style!

So today, we have a range of exciting different styles of Pinot Noir from lighter versions with cherry and strawberry flavours to heavier, weightier styles with a gamey, savoury character.

The general consensus is that Pinot Noir grows best in cool climates such as New Zealand and even England, but some fantastic wines have been made in the warmer regions of California where there is a cooling influence.

## PINOT NOIR AROUND THE WORLD

### France

In Burgundy, the Cote d'Or is where the top wines are made and the surrounding areas of Cote Chalonnaise, Auxerrois







grape in Champagne, but it merely adds structure and body to the wine. It accounts for 38% of the area under vine in Champagne and is the dominant grape in Montagne de Reims and Côte des Bar. The name Blanc de Noirs refers to a Champagne made from black grape varieties alone, such as Pinot Noir and/or Meunier and actually means white from black. So the flesh alone without the skins makes

and Maconnais produce more 'affordable' wines which tend to be less complex than those from the Cote d'Or. Red Burgundy from the top vineyards have their own distinct styles and recognisable flavours, but given the complexity of the structure of vineyards in this region, it needs a high level of expertise to determine exactly where the wines come from in a blind tasting! As a result, there is no one single flavour profile – some are chewy and plummy, some are muscular and dense, whilst others are soft, round and scented with strawberries.

In Champagne, Pinot Noir never reaches the same ripeness as for red wine, as varietal character is not the aim for this

the juice and gives its colour to the wine which, of course, is white.

## **Germany**

Germany is the third largest grower of Pinot Noir in the world, after France and the USA. The best Spatburgunders (as Pinot Noir is known here) lie between a pale, lightish style to a more full-bodied style from the warmer, more sheltered regions such as Baden and Pfalz which are naturally two of the best regions to grow and ripen Pinot Noir in Germany. Baden is the most southerly and therefore the warmest of the wine growing regions, and Pfalz is uniquely placed as a natural extension of Alsace.

The Vosges mountain range in Alsace extends into Germany and becomes the Haardt Mountains which provide sufficient rain-cover, coupled with solid diurnals (marked changes in day and night temperatures) and you have what is a relatively warm climate, given the region's geographical location. Wurttemberg and Rheingau are also warm enough to ripen



this grape as they benefit from proximity to rivers which help radiate heat to the vines and give protection from winds from the mountains as well as relatively warm summers. Wines from these regions are not as complex as those from Burgundy but have pleasant, ripe cherry and raspberry flavours and medium alcohol.

### **New Zealand**

This region is of course famous for Sauvignon Blanc, but it also has a reputation for producing

some of the best Pinot Noir in the world, with no shortage of cool sites but lots of sunshine. The most notable regions are Martinborough in North Island, Marlborough in South Island and Central Otago (further south). Pinot Noir from Marlborough tends to be lighter than most Central Otago Pinots, similar in hue to those of Martinborough and the aroma

profiles are generally very fruit-forward. They mostly have red fruit, raspberry and cranberry, although some tend more towards black fruit with notes of cherry. Wines from Central Otago, however, can be weightier with undertones of shrubbery and savoury notes with tannins in general tight and focused.

### **USA (California and Oregon)**

You might think that California is too hot for such a delicate grape as Pinot Noir, but along

the central coast the key characteristic is the east/west-positioned valleys that allow Pacific fogs to roll right in and cool the vineyards. This creates the ideal conditions for a silky, strawberry, cranberry and cherry-scented Pinot that won't break the bank.

Historic ranch lands, a romantic coast, country roads, stay-a-while towns, and grapes – lots and lots of grapes – make the Central Coast an outstanding wine country destination. Top vintners have transformed the Central Coast into one of the state's premier wine regions, with hundreds of wineries and expansive farmlands reminding you that more than grapes grow in this fertile region.

Continue south towards Santa Barbara County to discover Pinot Noir paradise, as coastal fog filters through the east-west oriented valleys to create one of the state's most diverse winegrowing regions. Even with the cooling fog this region is warmer, and notice the fuller body, higher alcohol in the wine but also a soft, velvety character.

Wines from the Russian River valley and Carneros are darker than those from the Central Coast, with black cherry as opposed to strawberry flavours and slightly weightier and a little pricier as well.

Oregon's Willamette Valley is a world-leading producer of Pinot Noir, with the grape accounting for over 60% of the region's wine production. The valley's unique climate and geography, along with its diverse soils, create ideal conditions for growing Pinot Noir.

Pinot Noir from Oregon is often described as having bright red fruit flavours like cherry and raspberry, with delicate floral notes and a subtle earthiness. It can also be dry, spicy, and herbal, with underlying red or dark fruits. More heavily oaked wines may have notes of cinnamon and vanilla. Oregon Pinot Noir tends to be more acidic, fresher, and less fruit-forward than Californian but improved winemaking techniques, better clones and experimentation are producing wines that just get better and better!

Pinot Noir's subtle flavours make it an excellent choice for a range of dishes, from complex meat and poultry meals such as those we have at Christmas to lighter fish dishes such as salmon or trout, or even vegetable based. The lighter tannins in this wine make it very food friendly and it is one of the most amazing grapes on the planet – literally there is a style to suit everyone – why not shop around to find your favourite?

*Rowena Hawtin DipWSET*





# CONSERVATION NEWS



Photo: Instagram: tale\_victoria

## Make your message count

We have over 50,000 readers per issue

Our magazine is delivered directly through letterboxes in carefully targeted areas. Conservation News is also available for collection at selected supermarkets, garden centres, pubs, coffee shops, farm shops and independent retailers throughout Kent.

**Find out how advertising with us can boost your business**

**email: [dawn@conservationnews.co.uk](mailto:dawn@conservationnews.co.uk)**



*Grants*  
*of Sevenoaks*

Bespoke handmade kitchens, bedrooms, studies & free-standing furniture

**[www.grantsofsevenoaks.co.uk](http://www.grantsofsevenoaks.co.uk)**

**VISIT MY WORKSHOP:** Unit 3 Chart Farm, Seal Chart TN15 0ES Sevenoaks

**Call 07809 504251**

Facebook - grantsofsevenoaks